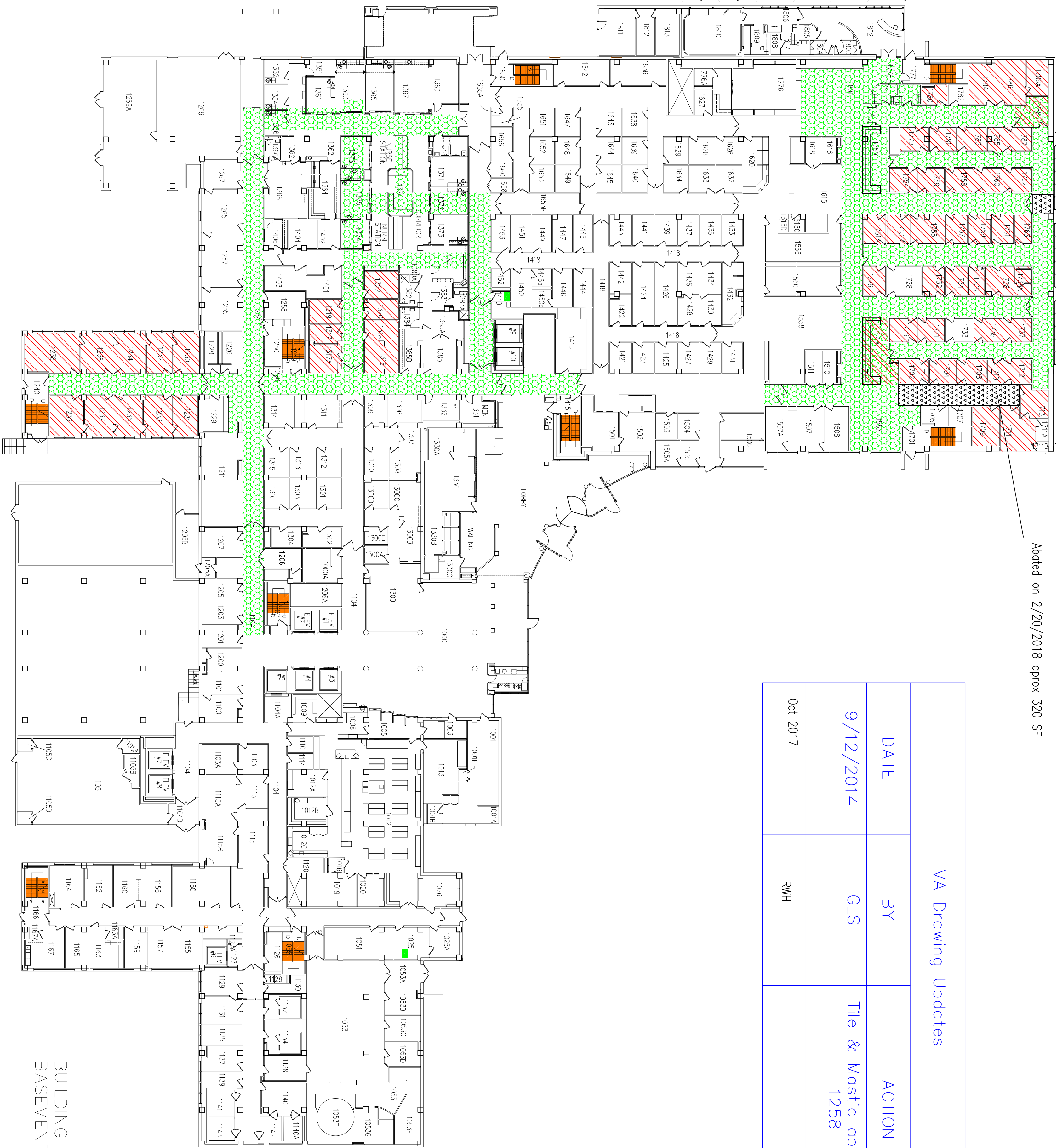


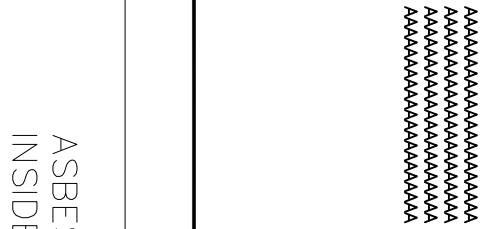
Areas that have been abated

Abated on 2/20/2018 aprox 320 SF

VA Drawing Updates			
DATE	BY	ACTION	
9/12/2014	GLS	Tile & Mastic abated rm 1258	
Oct 2017	RWH		



BUILDING NO. 1
BASEMENT



KEY

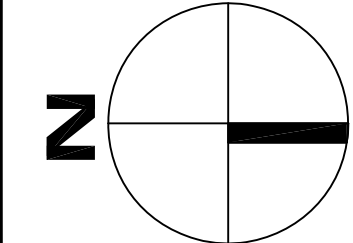
ASBESTOS CONTAINING, THERMAL INSULATION MAY EXIST ON MECHANICAL LINES
INSIDE FINISHED INTERIOR WALLS AND CEILINGS

ASBESTOS CONTAINING, NON-FRIABLE, CATEGORY 1, MASTIC ON SINK, BLACK

ASBESTOS CONTAINING, NON-FRIABLE, CATEGORY 1, 12" x 12" VFT & MASTIC,
WHITE W/BLACK SPOTTED (MASTIC ONLY)

ASBESTOS CONTAINING, NON-FRIABLE, CATEGORY 1, 12" x 12" VFT, WHITE
W/YELLOW SPOTTED (MASTIC ONLY)

ASBESTOS CONTAINING, NON-FRIABLE, CATEGORY 1, RESIDUAL BLACK HALLWAY,
FLOORING MASTIC



DRAWING TITLE

VA Medical Center
4101 Woolworth Avenue
Omaha, NE 68105

JOB NUMBER	DRAWN BY	DATE	CAD FILE	SCALE	SHEET
			B1,B25-F01.dwg	NONE	