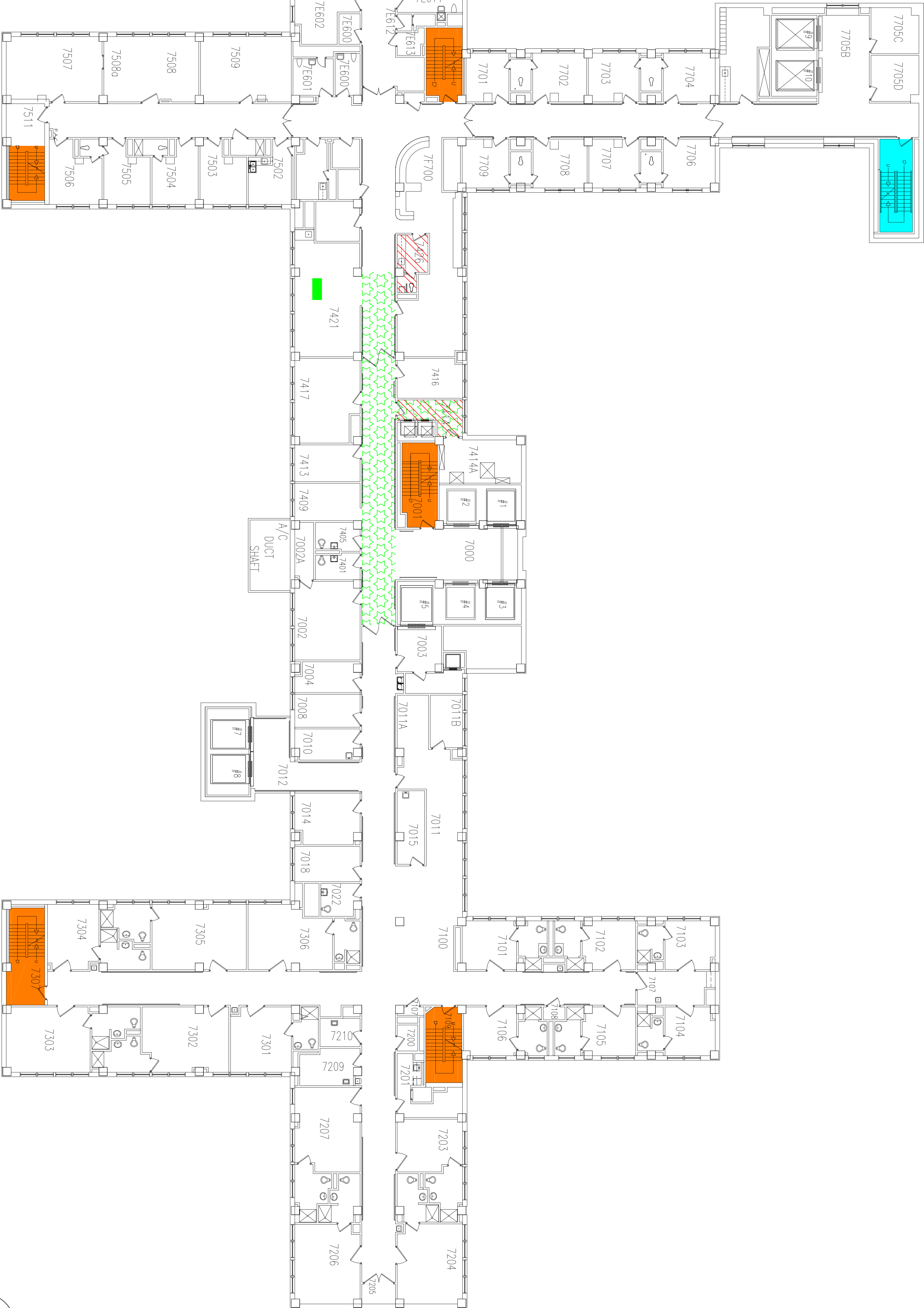


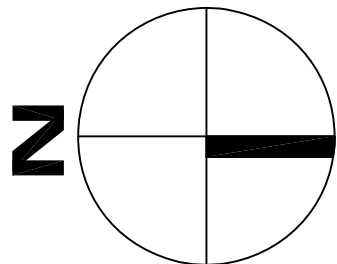
KEY

ASBESTOS CONTAINING THERMAL INSULATION MAY
EXIST ON MECHANICAL LINES INSIDE FINISHED
INTERIOR WALLS AND CEILINGS

- ASBESTOS CONTAINING, NON-FRIABLE, CATEGORY 1,
MASTIC ON SINK, BLACK
- ASBESTOS CONTAINING, NON-FRIABLE, CATEGORY 1,
12" x 12" VFT, GRAY
- ASBESTOS CONTAINING, NON-FRIABLE, CATEGORY 1,
12" x 12" VFT, WHITE W/YELLOW SPOTTED (MASTIC
ONLY)
- ASBESTOS CONTAINING, NON-FRIABLE, CATEGORY 1,
12" x 12" VFT, YELLOW & TAN WITH BLACK MASTIC
- ASBESTOS CONTAINING, NON-FRIABLE, CATEGORY 1,
RESIDUAL BLACK HALLWAY FLOORING MASTIC



BUILDING NO. 1
SEVENTH FLOOR



JOB NUMBER				DRAWING TITLE			
DRAWN BY				VA Medical Center 4101 North Avenue Omaha, NE 68105			
DATE				SCALE			
CAD FILE				SHEET			
B17.dwg				NONE			