

one eighth inch = one foot
one quarter inch = one foot
three eighths inch = one foot
one half inch = one foot
three quarters inch = one foot
one inch = one foot
one and one half inches = one foot
three inches = one foot



SITE LOCATION

SCALE: NONE

DRAWING INDEX

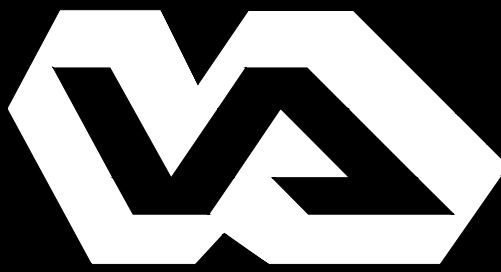
DISCIPLINE/ SHEET NO.	DESCRIPTION
G001	COVER SHEET & DRAWING INDEX
GI101	GENERAL INFORMATION

DISCIPLINE/ SHEET NO.	DESCRIPTION
A-101	GROUND FLOOR PLAN
A-102	FIRST FLOOR PLAN
A-201	EAST ELEVATIONS
A-202	WEST ELEVATIONS
A-203	NORTH AND SOUTH ELEVATIONS
A-501	WINDOW DETAILS
A-502	WINDOW AND INSTALLATION DETAILS
A-601	WINDOW SCHEDULE

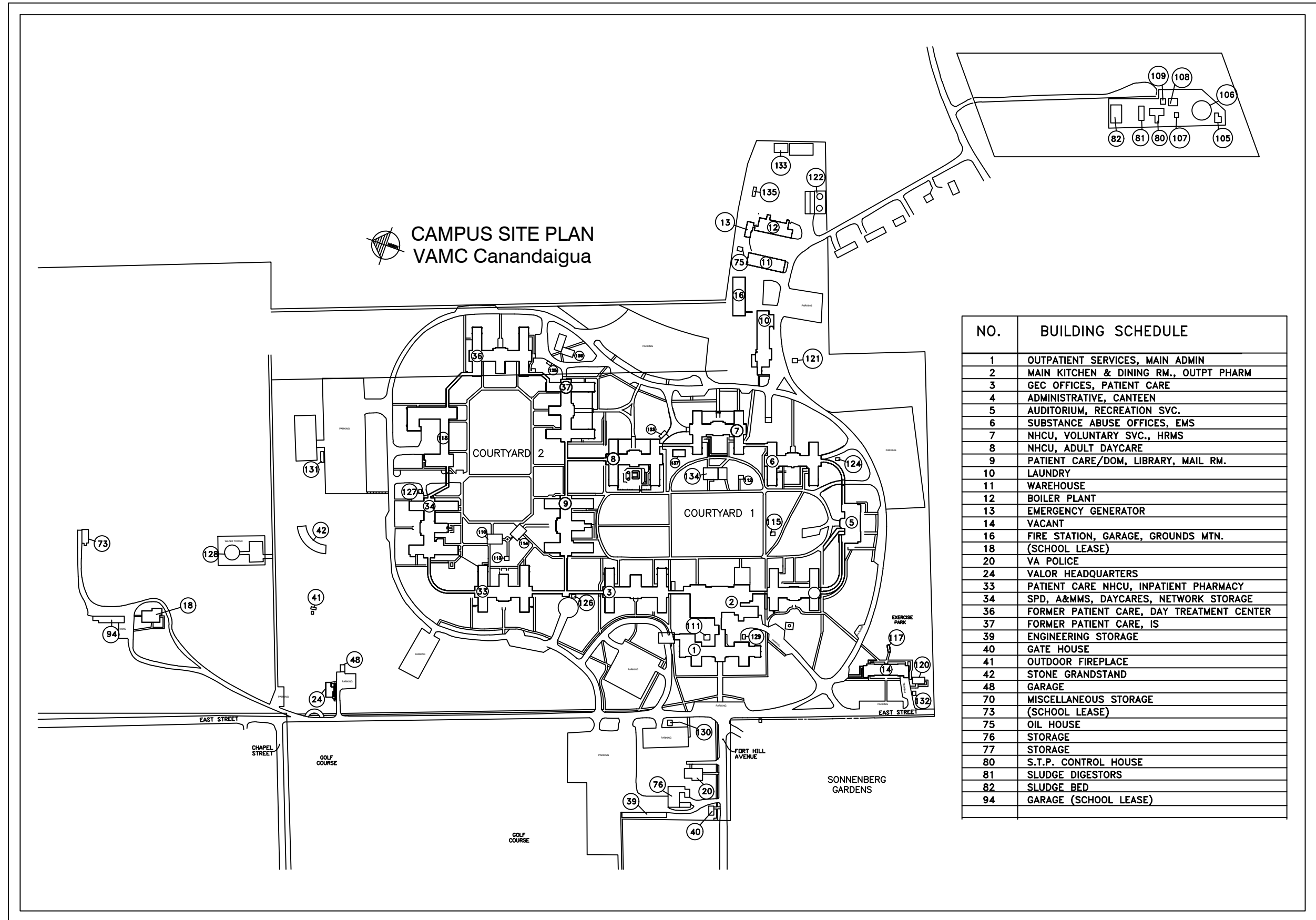
REPLACE WINDOWS BUILDING 36
GROUND AND FIRST FLOORS

DEPARTMENT OF VETERANS AFFAIRS
PROJECT NO. 528-A5-18-529

CANANDAIGUA, NY



Department of
Veterans Affairs



SITE PLAN

SCALE: NONE

NO.	BUILDING SCHEDULE
1	OUTPATIENT SERVICES, MAIN ADMIN
2	MAIN KITCHEN & DINING RM., OUTPAT PHARM
3	GEC OFFICES, PATIENT CARE
4	ADMINISTRATIVE, CANTINE
5	AUDITORIUM, RECREATION SVC.
6	SUBSTANCE ABUSE OFFICES, EMS
7	INCU, VOLUNTARY SVC., HEMS
8	INCU, ADULT DAYCARE
9	PATIENT CARE/COM, LIBRARY, MAIL RM.
10	LAUNDRY
11	WAREHOUSE
12	BOILER PLANT
13	EMERGENCY GENERATOR
14	VACANT
15	FIRE STATION, GARAGE, GROUNDS MTN.
16	(SCHOOL LEASE)
17	VA POLICE
18	VALOR HEADQUARTERS
19	PATIENT CARE INCU, INPATIENT PHARMACY
20	SPO, ARMS, DANGERS, NETWORK STORAGE
21	FORMER PATIENT CARE, DAY TREATMENT CENTER
22	FORMER PATIENT CARE, IS
23	ENGINEERING STORAGE
24	GATE HOUSE
25	OUTDOOR FIREPLACE
26	STONE GRABSTAND
27	GARAGE
28	MISCELLANEOUS STORAGE
29	(SCHOOL LEASE)
30	OIL HOUSE
31	STORAGE
32	S.T.P. CONTROL HOUSE
33	SLUDGE DIGESTORS
34	SLUDGE BED
35	GARAGE (SCHOOL LEASE)

Revisions:	Date:

CONSULTANT

ARCHITECT/ENGINEER OF RECORD

STAMP

Office of
Construction
and Facilities
Management



U.S. Department
of Veterans Affairs

Drawing Title

COVER PAGE

Approved:

Phase

NOTE:

USERS OF THESE DRAWINGS ARE RESPONSIBLE FOR VERIFYING
EXISTING DIMENSIONS AND CONDITIONS IN THE FIELD

Project Title

REPLACE WINDOWS
BLDG 36 G & A

Location

Canandaigua, NY

Issue Date

Checked

ECS

Drawn

JJN

Project Number

528A5-18-529

Building Number

36

Drawing Number

G001

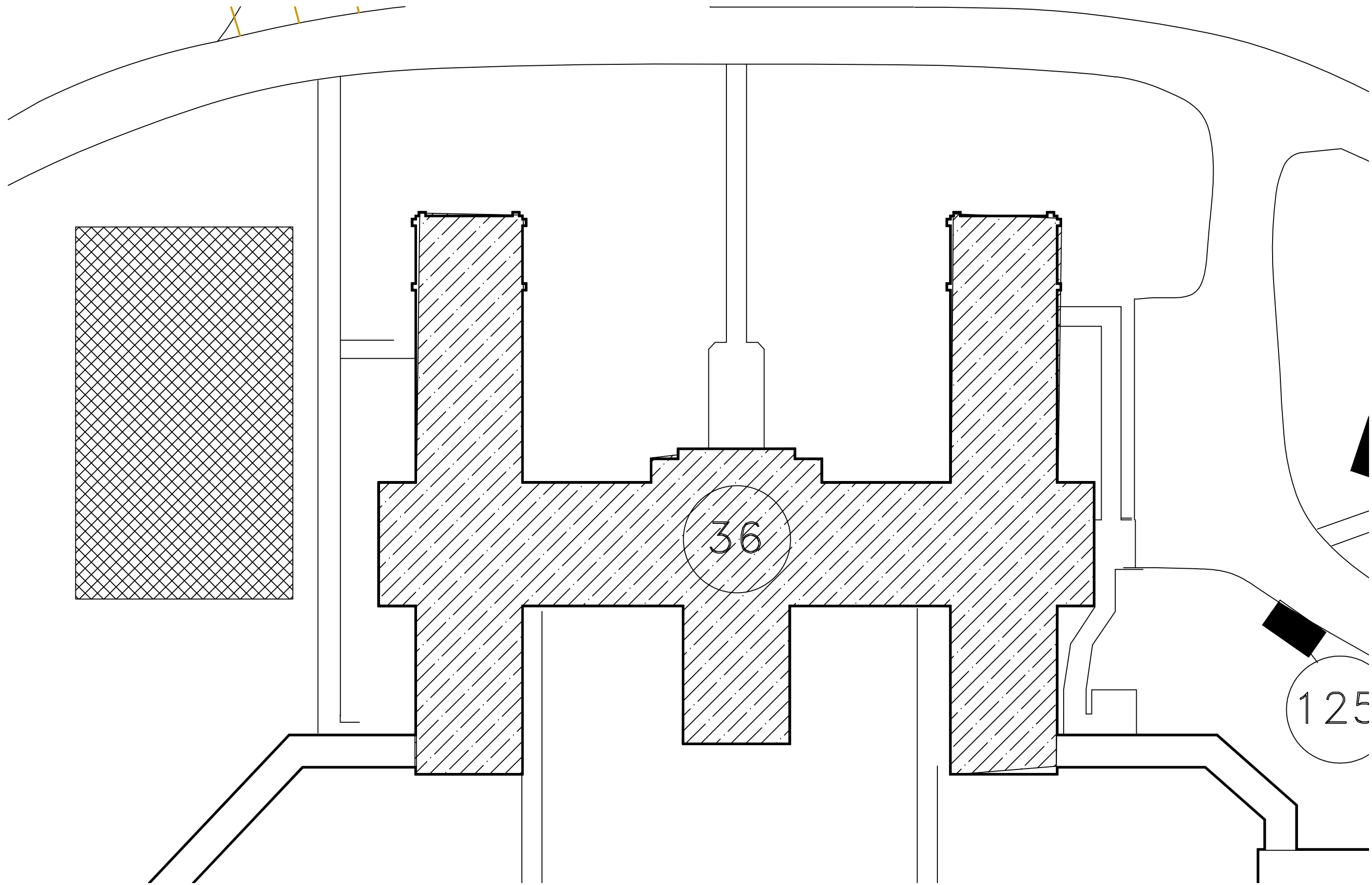
one eighth inch = one foot
one quarter inch = one foot
three eighths inch = one foot
one half inch = one foot
three quarters inch = one foot
one inch = one foot
one and one half inches = one foot
two inches = one foot
three inches = one foot

GENERAL NOTES:

1. CONTRACTOR IS RESPONSIBLE FOR FIELD VERIFYING ALL DIMENSIONS.
2. WORK THAT IS TYPICALLY REQUIRED BUT NOT SPECIFICALLY CALLED OUT IS IMPLIED AND SHOULD BE CONSIDERED PART OF THE DRAWINGS AND SPECIFICATIONS.
3. IN THE EVENT THERE IS A DISCREPANCY BETWEEN THE DRAWINGS AND THE SPECIFICATION, THE SPECIFICATIONS WILL GOVERN. DISCREPANCIES SHOULD IMMEDIATELY BE BROUGHT TO THE ATTENTION OF THE COR.
4. IN THE EVENT CONDITIONS ARE DIFFERENT THAN ADDRESSED IN SCOPE OF THIS CONTRACT, THE CONTRACTOR MUST IMMEDIATELY AND BEFORE PROCEEDING NOTIFY THE COR AND CONTRACTING OFFICER.
5. CONTRACTOR IS REQUIRED TO ADHERE TO ALL OSHA SAFETY STANDARDS.
6. ALL PERSONNEL ENTERING THE CANANDAIGUA VA MEDICAL CENTER ARE SUBJECT TO THE RULES AND REGULATIONS OF THE FACILITY. CONTRACTOR IS RESPONSIBLE FOR SCREENING EMPLOYEES, SUBCONTRACTORS, AND VENDORS PRIOR TO THEM ENTERING VAMC PROPERTY.
7. CONTRACTOR WILL COORDINATE WITH THE COR FOR ACCESS TO VA CAMPUS, BUILDINGS, AND WORK AREAS.
8. ANY UTILITY SHUT DOWNS MUST BE COORDINATED WITH THE COR AND MEDICAL CENTER ENGINEERING DEPARTMENT A MINIMUM OF 14 DAYS PRIOR.
9. CONTRACTOR WILL COORDINATE PRIOR TO MOBILIZATION FOR MATERIAL LAYDOWN AREA.
10. THE CONTRACTOR SHALL BE RESPONSIBLE FOR REMOVAL OF ANY CONSTRUCTION DEBRIS RELATED TO THIS PROJECT.
11. THE CONTRACTOR SHALL PRESERVE, CLEAN, FLASH IN AND MAKE WATER TIGHT ALL WINDOW OPENINGS AT THE END OF EVERY SHIFT.
12. THE CONTRACTOR SHALL BE RESPONSIBLE FOR ANY AREAS WATER DAMAGE CAUSED BY WINDOW LEAKS AND OR IMPROPERLY INSTALLED TERMINATIONS OR FLASHING THROUGH CONSTRUCTION.
13. EVERY ATTEMPT HAS BEEN MADE TO INDICATE PERTINENT EXISTING CONDITIONS AND DIMENSIONS AS CLOSE AS POSSIBLE FROM SITE SURVEYS, DRAWINGS, AND FIELD VERIFICATION. PRIOR TO BID CONTRACTOR SHALL SATISFY THEMSELVES TO EXISTING CONDITIONS AND DIMENSIONS. CONTRACTOR SHALL INCLUDE IN THEIR BID PRICE, ALL MISC. ACCESSORIES NECESSARY TO PROVIDE A COMPLETE WATER TIGHT ASSEMBLY.
14. ALL DIMENSIONS ARE APPROXIMATE AND ONLY INTENDED AS A GUIDE. CONTRACTOR SHALL FIELD VERIFY ALL SITE DIMENSIONS PRIOR TO BIDDING OR ORDERING MATERIAL. VISIBLE WINDOW SIZES SHALL MATCH EXISTING, NO EXCESSIVE TRIM FOR CONTRACTOR ERROR IN MEASUREMENT.
15. ALL ABATEMENT SHALL BE IN ACCORDANCE WITH NEW YORK STATE CODE RULE 56.
16. CONTRACTOR IS RESPONSIBLE FOR MAINTAINING CONSTRUCTION AND LAYDOWN AREA DURING CONSTRUCTION AND RESTORING SITE TO PRE-CONSTRUCTION CONDITIONS.
17. CONTRACTOR WILL INSTALL CONSTRUCTION FENCE AROUND WORK AREAS AND ANY STAGING AREAS.
18. ENSURE THERMAL BREAK ON ALL WINDOWS.
19. ALL BLOCKING MUST BE FIRE RATED

LEGEND

- AREA OF WORK
- BUILDING NUMBER
- LAYDOWN AREA



ISSUED	DATE

REVISIONS	DATE

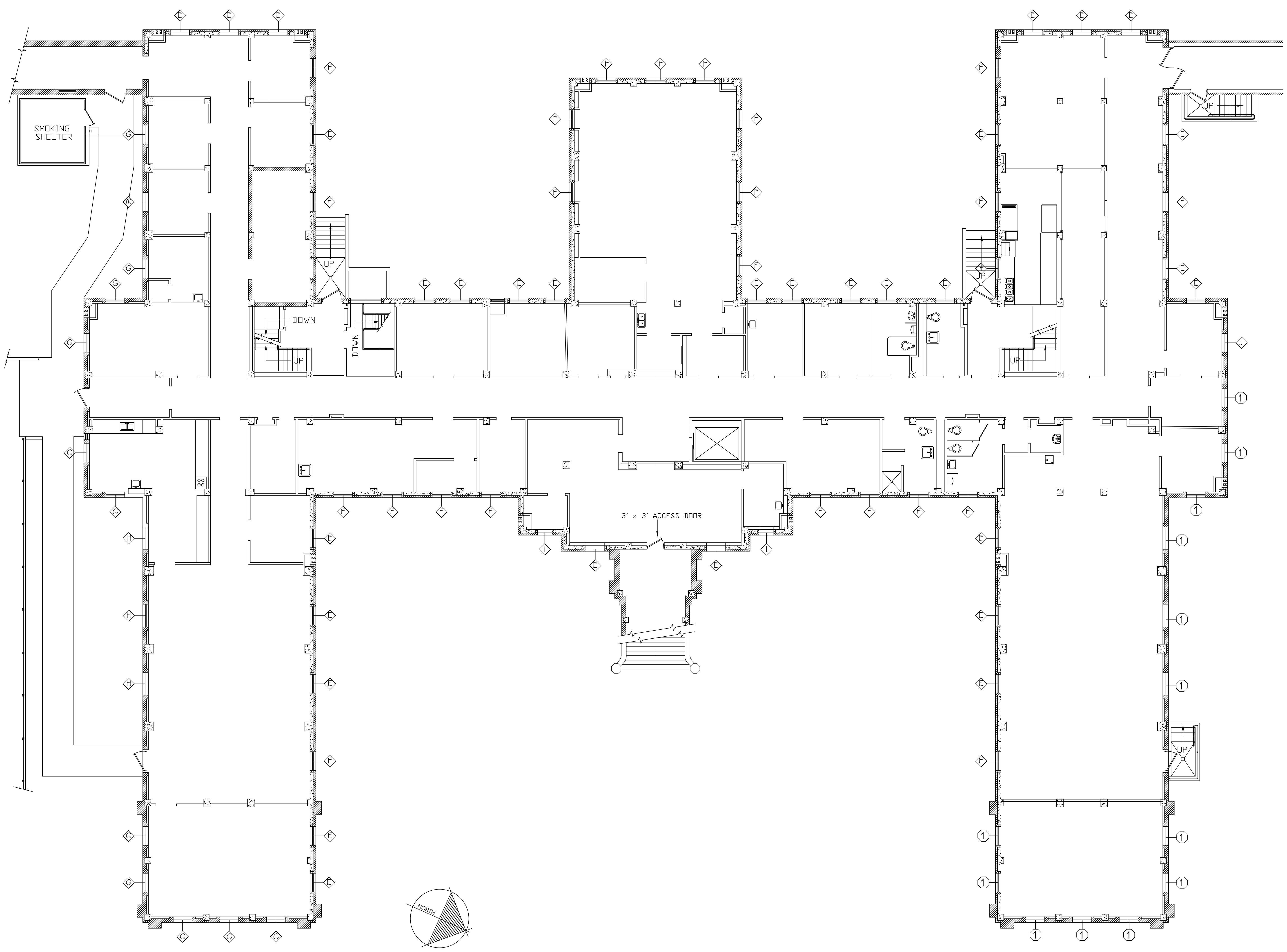
DRAWING TITLE
GENERAL INFORMATION
APPROVED PROJECT DIRECTOR
Yoder, Jacob

PROJECT TITLE
REPLACE ROOFS CONNECTING CORRIDORS
LOCATION 400 FORT HILL AVE CANANDAIGUA, NY 14424
DATE 2-13-2019
CHECKED ECS
DRAWN JUN

PROJECT NUMBER 528A5-18-529
BUILDING NUMBER CAMPUS
DRAWING NUMBER GI-101
DWG. 02 OF 10

CANANDAIGUA
VA MEDICAL
CENTER
ENGINEERING
DEPARTMENT

three inches = one foot
one and one half inches = one foot
one inch = one foot
three quarters inch = one foot
one half inch = one foot
three eighths inch = one foot
one quarter inch = one foot
one eighth inch = one foot



- GENERAL NOTES:
1. CONTRACTOR IS RESPONSIBLE FOR ALL FIELD MEASUREMENTS PRE-BID AND PRE-CONSTRUCTION.
 2. CONTRACTOR IS RESPONSIBLE FOR ALL HAZARDOUS MATERIALS TESTING AND ABATEMENT ASSOCIATED WITH THIS PROJECT.

- KEYNOTES:
1. INSTALL SNAP IN GRIDS TO EXISTING WINDOWS NOT BEING REPLACED

WINDOW TYPES (THIS FLOOR):
REFERENCED ON A-501:

E F G H I J

1 BUILDING 36 GROUND FLOOR PLAN
SCALE : NTS

ISSUED	DATE
--------	------

REVISIONS	DATE
-----------	------

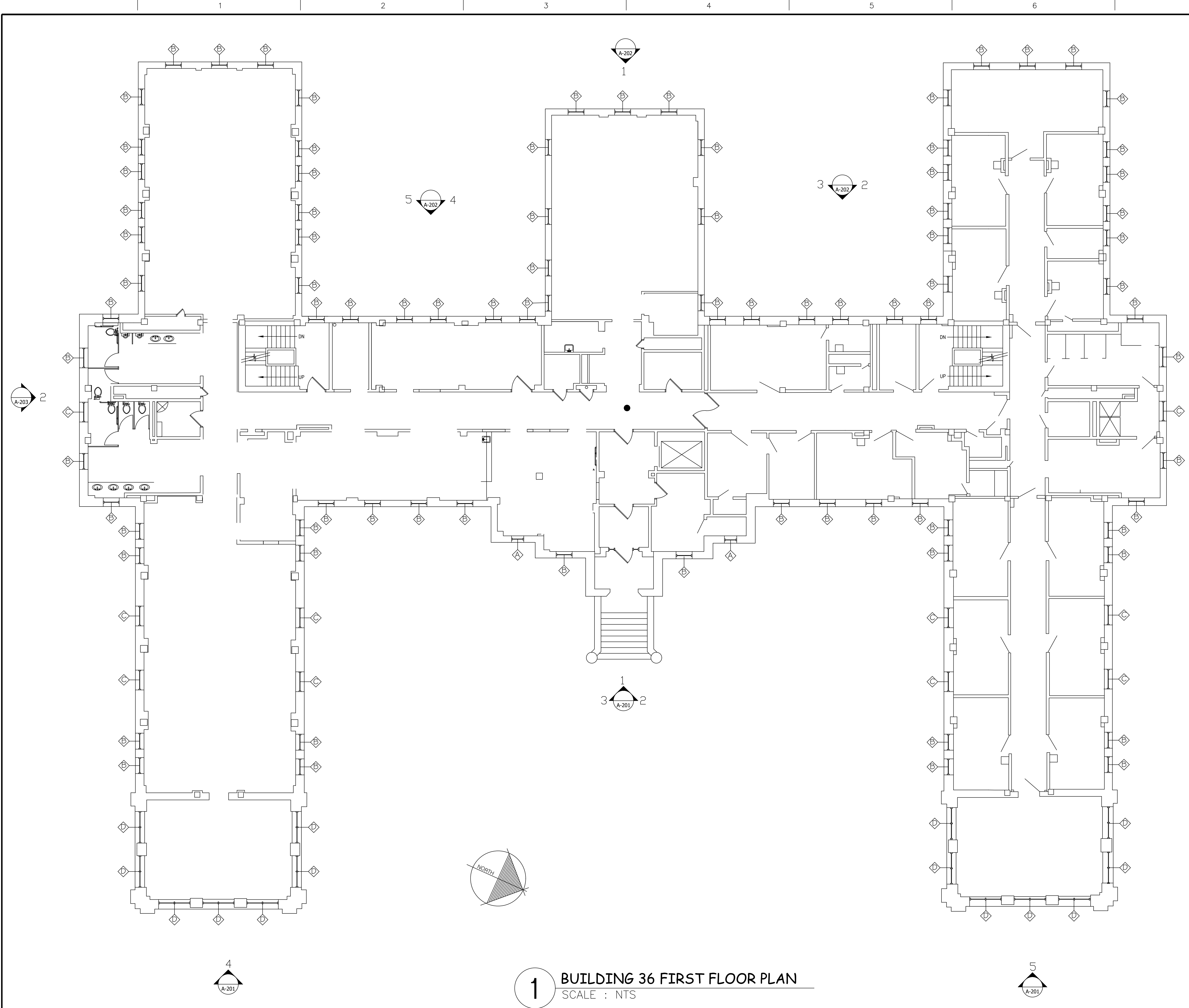
DRAWING TITLE	GROUND FLOOR PLAN
APPROVED PROJECT DIRECTOR	Yoder, Jacob

PROJECT TITLE	REPLACE WINDOWS BUILDING 36 GROUND AND FIRST FLOOR
LOCATION	400 FORT HILL AVE CANANDAIGUA, NY 14424
DATE	2-13-2019
CHECKED	ECS
DRAWN	JUN

PROJECT NUMBER	528A5-18-529
BUILDING NUMBER	36
DRAWING NUMBER	A-101
DWG.	3 of 10

CANANDAIGUA
VA MEDICAL
CENTER
ENGINEERING
DEPARTMENT

three inches = one foot
one and one half inches = one foot
one inch = one foot
three quarters inch = one foot
one half inch = one foot
three eighths inch = one foot
one quarter inch = one foot
one eighth inch = one foot



- GENERAL NOTES:
1. CONTRACTOR IS RESPONSIBLE FOR ALL FIELD MEASUREMENTS PRE-BID AND PRE-CONSTRUCTION.
 2. CONTRACTOR IS RESPONSIBLE FOR ALL HAZARDOUS MATERIALS TESTING AND ABATEMENT ASSOCIATED WITH THIS PROJECT.

WINDOW TYPES (THIS FLOOR):
REFERENCED ON A-501:
A B C D

1 BUILDING 36 FIRST FLOOR PLAN
SCALE : NTS

ISSUED	DATE
--------	------

REVISIONS	DATE
-----------	------

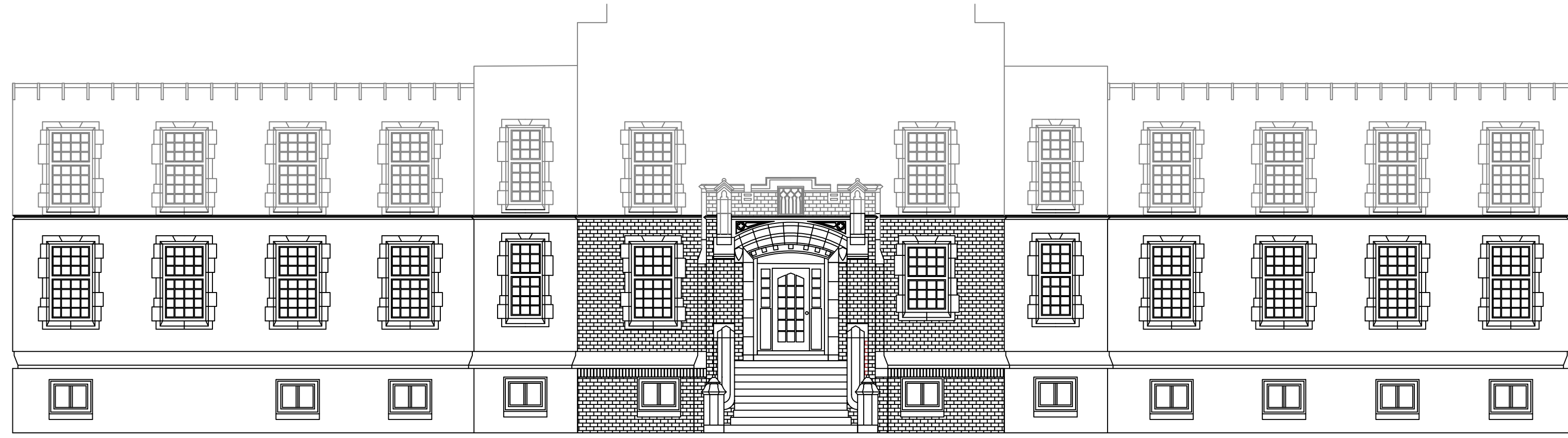
DRAWING TITLE	FIRST FLOOR PLAN
APPROVED PROJECT DIRECTOR	Yoder, Jacob

PROJECT TITLE	REPLACE WINDOWS BUILDING 36 GROUND AND FIRST FLOOR
LOCATION	400 FORT HILL AVE CANANDAIGUA, NY 14424
DATE	2-13-2019
CHECKED	ECS
DRAWN	JUN

PROJECT NUMBER	528A5-18-529
BUILDING NUMBER	36
DRAWING NUMBER	A-102
DWG. 4 of 10	

CANANDAIGUA
VA MEDICAL
CENTER
ENGINEERING
DEPARTMENT

one eighth inch = one foot
0 4 8
one quarter inch = one foot
0 4 8
three eighths inch = one foot
0 4 8
one half inch = one foot
0 4 8
three quarters inch = one foot
0 2 4
one inch = one foot
0 6
one and one half inches = one foot
0 6 1
three inches = one foot
0 6



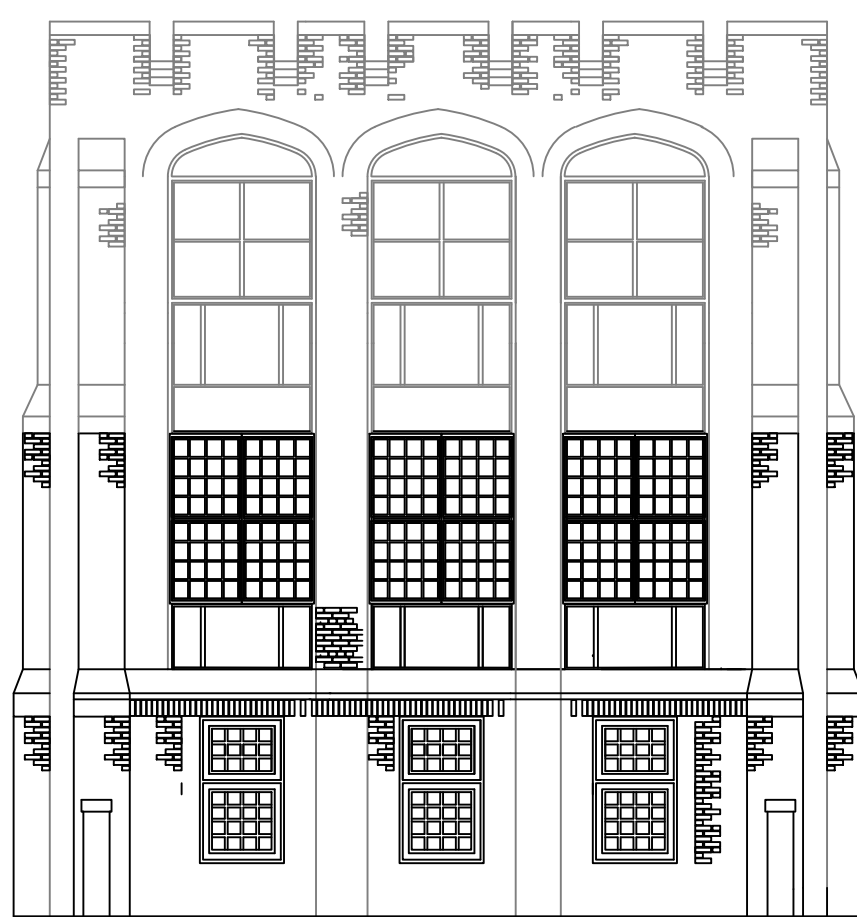
1 EAST ELEVATION
SCALE $\frac{1}{8}$ " : 1'



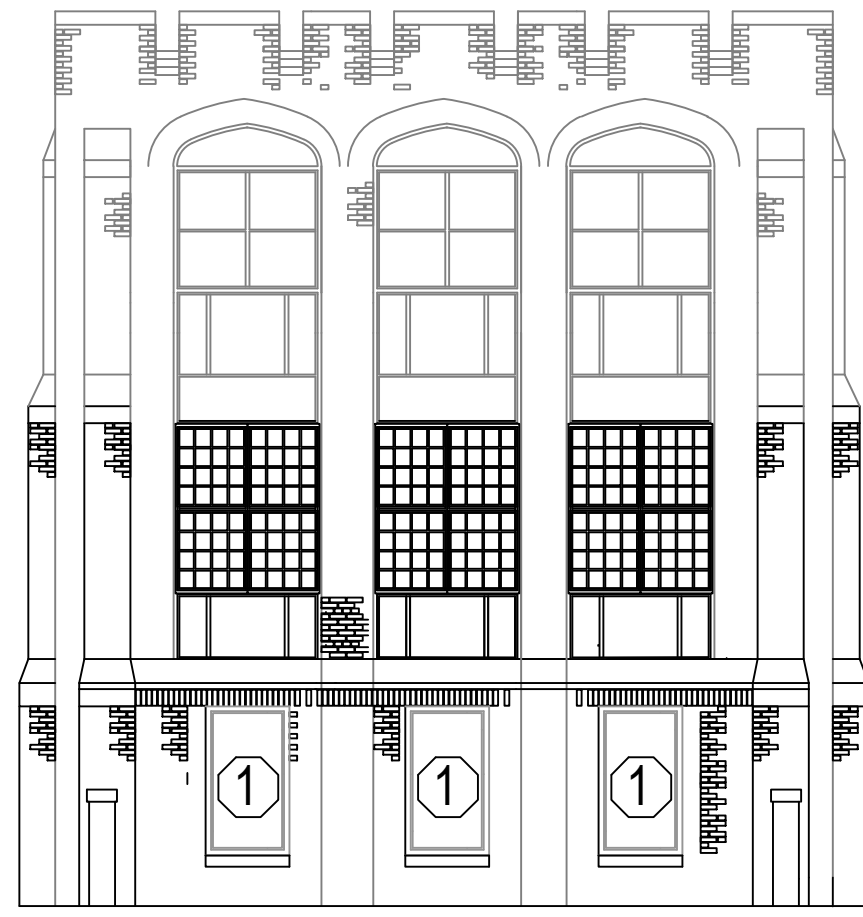
2 N. WING EAST ELEVATION
SCALE $\frac{1}{8}$ " : 1'



3 S. WING EAST ELEVATION
SCALE $\frac{1}{8}$ " : 1'



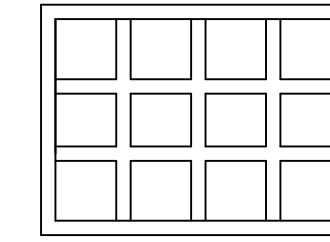
4 S. PORCH EAST ELEVATION
SCALE $\frac{1}{8}$ " : 1'



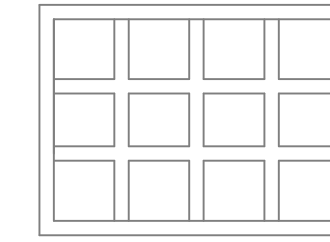
5 N. PORCH EAST ELEVATION
SCALE $\frac{1}{8}$ " : 1'

LEGEND:

Window in scope



Window not in scope



KEYNOTES:

- ① INSTALL SNAP IN GRIDS TO MATCH NEW TO EXISTING WINDOWS NOT BEING REPLACED

SHEET NOTES:

1. CONTRACTOR IS RESPONSIBLE FOR ALL FIELD MEASUREMENTS PRE-BID AND DURING CONSTRUCTION. EVERY EFFORT HAS BEEN MADE TO PROVIDE AN ACCURATE REPRESENTATION OF EXISTING CONDITIONS.
2. UNLESS OTHERWISE INDICATED, ALL WINDOWS ON THE GROUND FLOOR AND FIRST FLOOR ARE TO BE REPLACED.
3. CONTRACTOR IS RESPONSIBLE FOR INSTALLING WINDOWS TO MANUFACTURERS SPECIFICATIONS.
4. ALL WINDOW OPENINGS MUST RECEIVE A WEATHER TIGHT SEAL AT THE END OF EVERY WORK SHIFT.
5. SECOND FLOOR WINDOWS NOT INCLUDED IN SCOPE (TYP)
6. NEW GRIDS TO MATCH EXIST SPACING/APPEARANCE.

ISSUED	DATE
--------	------

REVISIONS	DATE
-----------	------

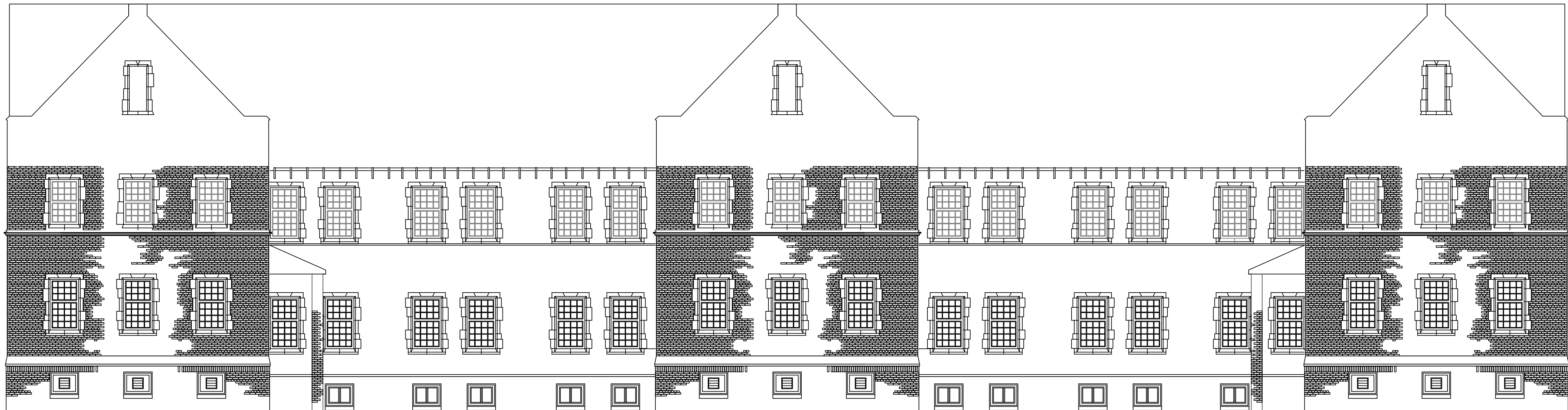
DRAWING TITLE	EAST ELEVATION
APPROVED PROJECT DIRECTOR	Yoder, Jacob

PROJECT TITLE	REPLACE WINDOWS BUILDING 36 GROUND AND FIRST FLOOR
LOCATION	400 FORT HILL AVE CANANDAIGUA, NY 14424
DATE	2-13-2019
CHECKED	ECS
DRAWN	JUN

PROJECT NUMBER	528A5-18-529
BUILDING NUMBER	36
DRAWING NUMBER	A-201
DWG. 5 of 10	

CANANDAIGUA VA MEDICAL CENTER ENGINEERING DEPARTMENT
--

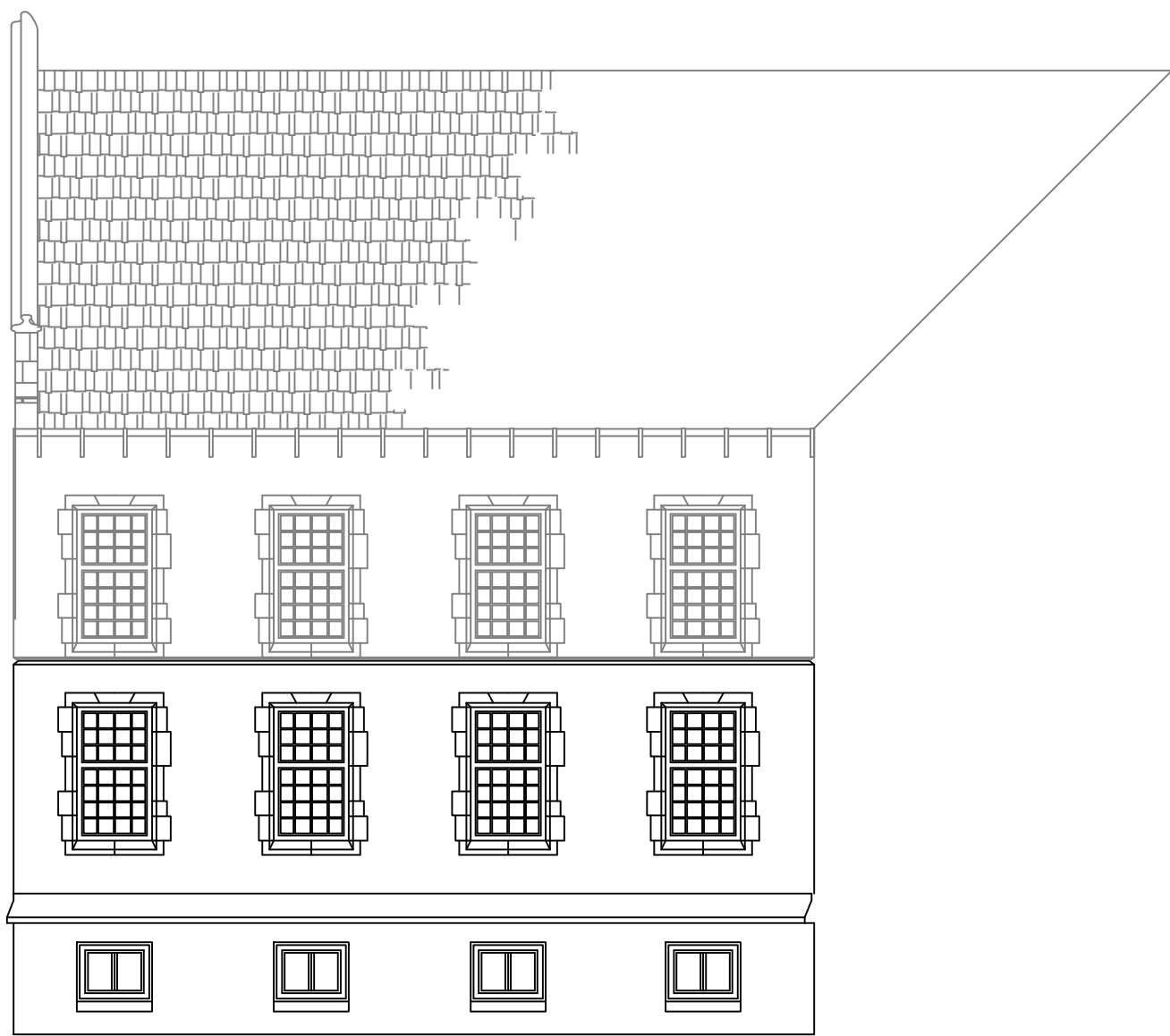
three inches = one foot
one and one half inches = one foot
one inch = one foot
three quarters inch = one foot
one half inch = one foot
three eighths inch = one foot
one quarter inch = one foot
one eighth inch = one foot



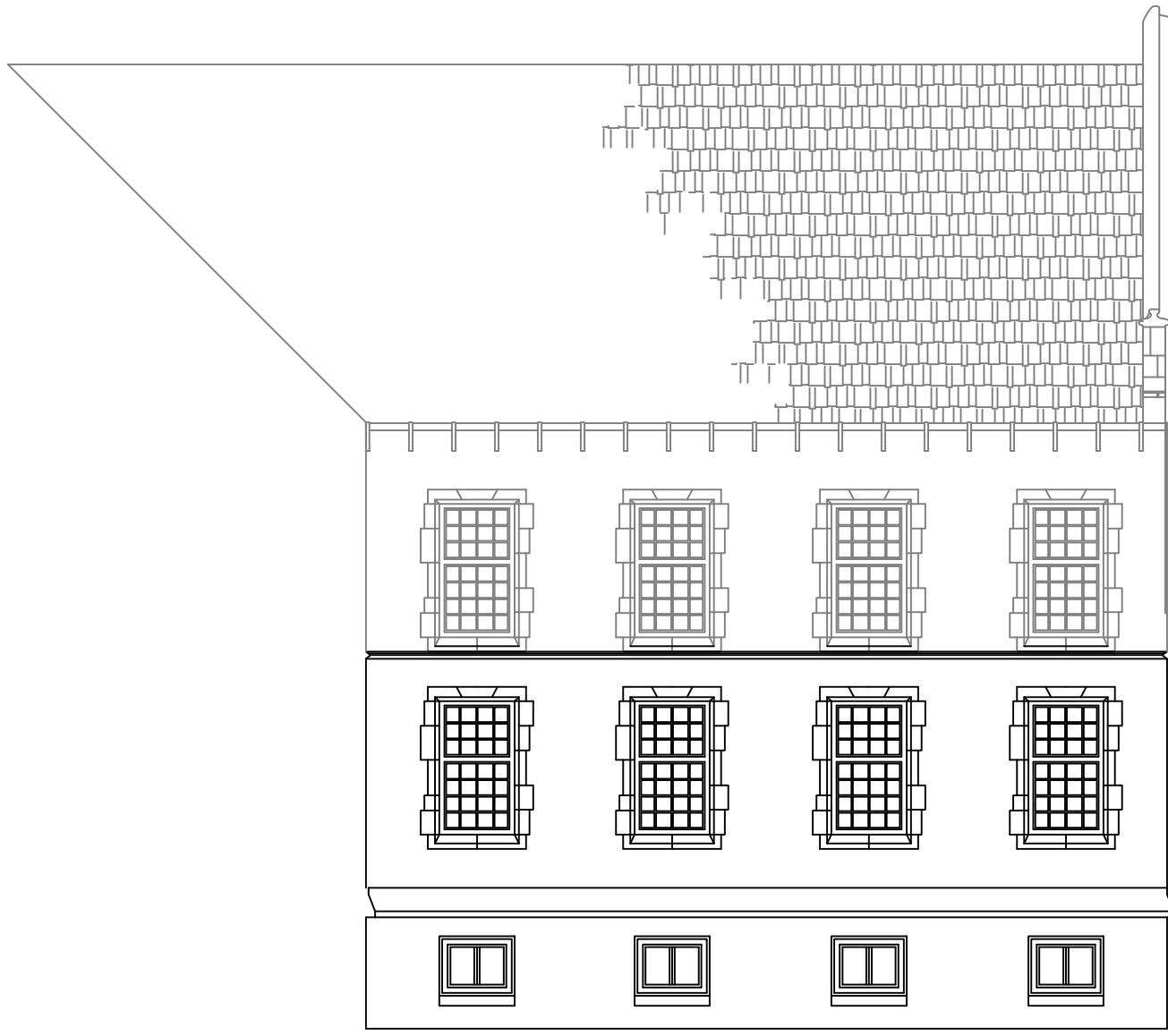
1 WEST ELEVATION
SCALE 1/8" : 1'



2 ELEVATION
SCALE 1/8" : 1'



3 ELEVATION
SCALE 1/8" : 1'



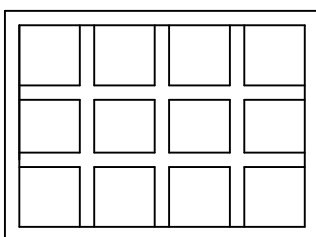
4 ELEVATION
SCALE 1/8" : 1'



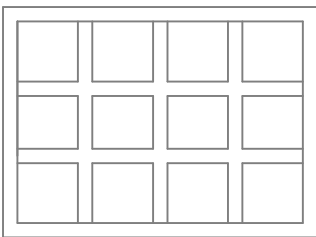
5 ELEVATION
SCALE 1/8" : 1'

LEGEND:

Window in scope



Window not in scope



SHEET NOTES:

- CONTRACTOR IS RESPONSIBLE FOR ALL FIELD MEASUREMENTS PRE-BID AND DURING CONSTRUCTION. EVERY EFFORT HAS BEEN MADE TO PROVIDE AN ACCURATE REPRESENTATION OF EXISTING CONDITIONS.
- UNLESS OTHERWISE INDICATED, ALL WINDOWS ON THE GROUND FLOOR AND FIRST FLOOR ARE TO BE REPLACED.
- CONTRACTOR IS RESPONSIBLE FOR INSTALLING WINDOWS TO MANUFACTURERS SPECIFICATIONS.
- ALL WINDOW OPENINGS MUST RECEIVE A WEATHER TIGHT SEAL AT THE END OF EVERY WORK SHIFT.
- SECOND FLOOR WINDOWS NOT INCLUDED IN SCOPE (TYP).
- NEW GRIDS TO MATCH EXIST SPACING/APPEARANCE.

ISSUED	DATE
--------	------

REVISIONS	DATE
-----------	------

DRAWING TITLE
WEST ELEVATION
APPROVED PROJECT DIRECTOR
Yoder, Jacob

PROJECT TITLE
REPLACE WINDOWS BUILDING 36 GROUND AND FIRST FLOOR
LOCATION
400 FORT HILL AVE CANANDAIGUA, NY 14424
DATE
2-13-2019
CHECKED
ECS
DRAWN
JUN

PROJECT NUMBER
528A5-18-529
BUILDING NUMBER
36
DRAWING NUMBER
A-202
DWG. 6 of 10

CANANDAIGUA VA MEDICAL CENTER ENGINEERING DEPARTMENT
--

three inches = one foot
one and one half inches = one foot
one inch = one foot
three quarters inch = one foot
one half inch = one foot
three eighths inch = one foot
one quarter inch = one foot
one eighth inch = one foot



1 NORTH ELEVATION
SCALE $\frac{1}{8}$ " : 1'



2 SOUTH ELEVATION
SCALE $\frac{1}{8}$ " : 1'

LEGEND:

- Window in scope
- Window not in scope

KEYNOTES:
① INSTALL SNAP IN GRIDS TO MATCH NEW TO EXISTING WINDOWS NOT BEING REPLACED

SHEET NOTES:

- CONTRACTOR IS RESPONSIBLE FOR ALL FIELD MEASUREMENTS PRE-BID AND DURING CONSTRUCTION. EVERY EFFORT HAS BEEN MADE TO PROVIDE AN ACCURATE REPRESENTATION OF EXISTING CONDITIONS.
- UNLESS OTHERWISE INDICATED, ALL WINDOWS ON THE GROUND FLOOR AND FIRST FLOOR ARE TO BE REPLACED.
- CONTRACTOR IS RESPONSIBLE FOR INSTALLING WINDOWS TO MANUFACTURERS SPECIFICATIONS.
- ALL WINDOW OPENINGS MUST RECEIVE A WEATHER TIGHT SEAL AT THE END OF EVERY WORK SHIFT.
- SECOND FLOOR WINDOWS NOT INCLUDED IN SCOPE (TYP).
- NEW WINDOWS SHALL HAVE GRIDS TO MATCH SPACING/STYLE OF THOSE REPLACED.

ISSUED	DATE
--------	------

REVISIONS	DATE
-----------	------

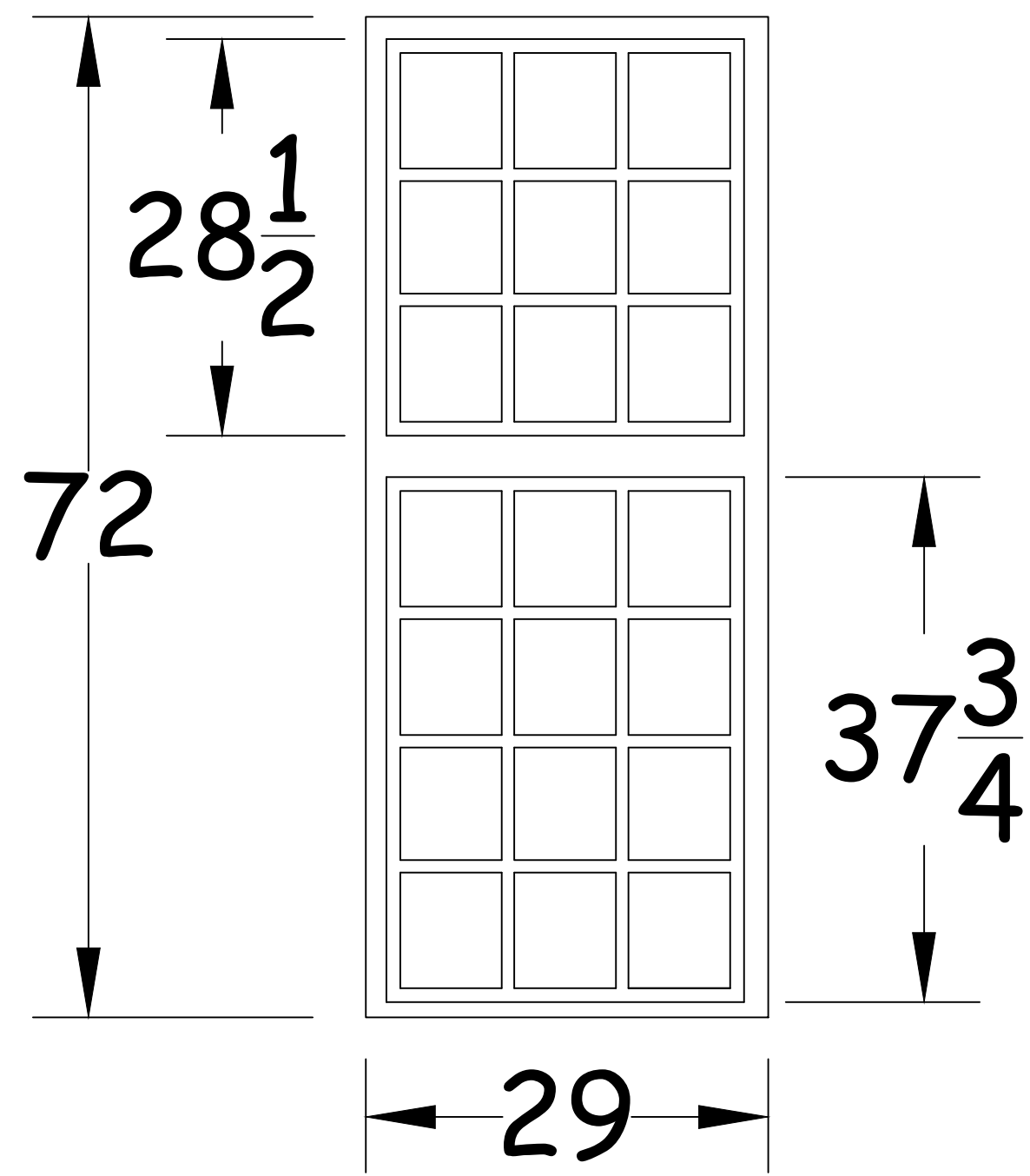
DRAWING TITLE
NORTH AND SOUTH ELEVATIONS
APPROVED PROJECT DIRECTOR
Yoder, Jacob

PROJECT TITLE
REPLACE WINDOWS BUILDING 36 GROUND AND FIRST FLOOR
LOCATION
400 FORT HILL AVE CANANDAIGUA, NY 14424
DATE
2-13-2019
CHECKED
ECS
DRAWN
JUN

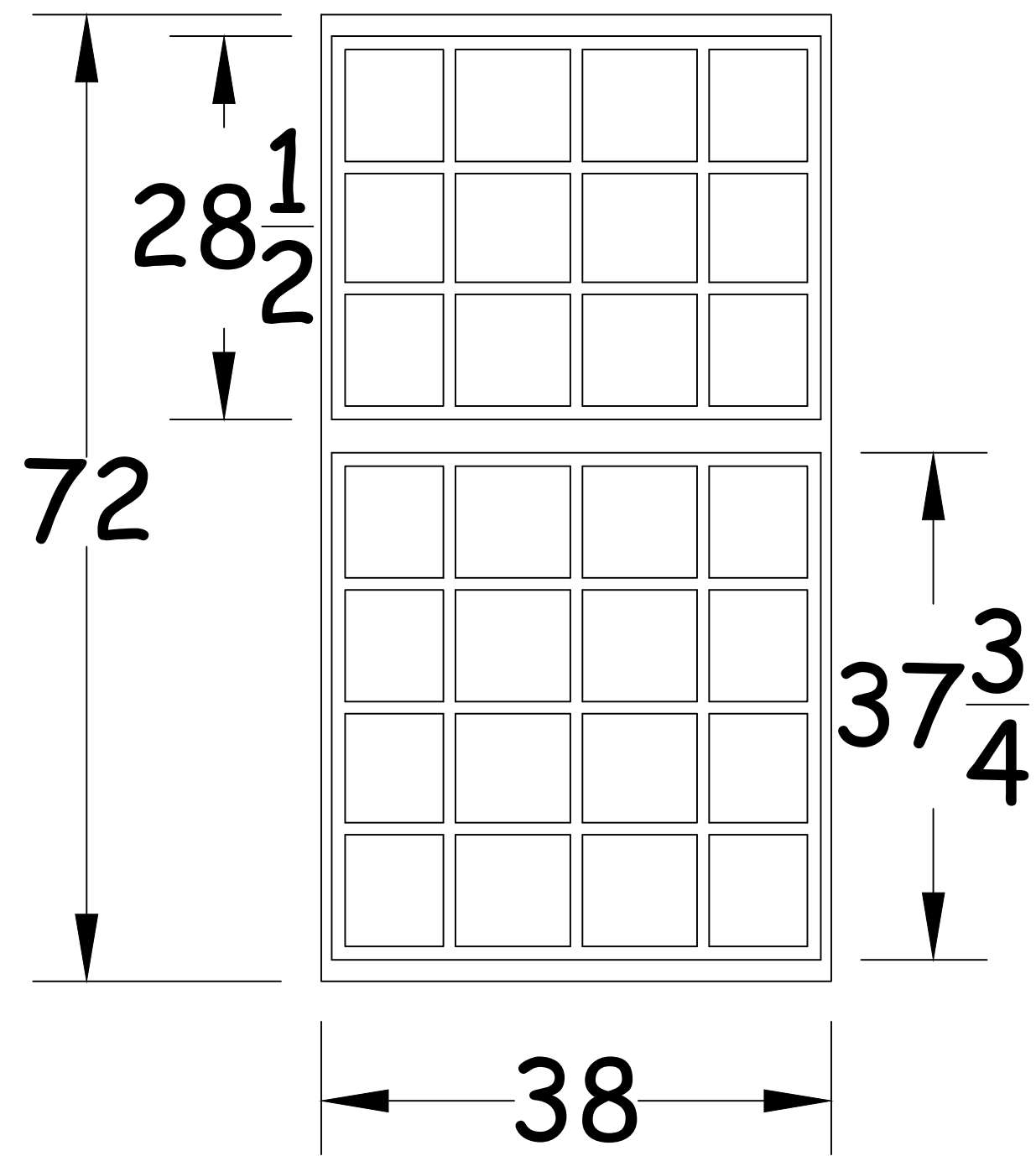
PROJECT NUMBER
528A5-18-529
BUILDING NUMBER
36
DRAWING NUMBER
A-203
DWG. 7 of 10

CANANDAIGUA
VA MEDICAL
CENTER
ENGINEERING
DEPARTMENT

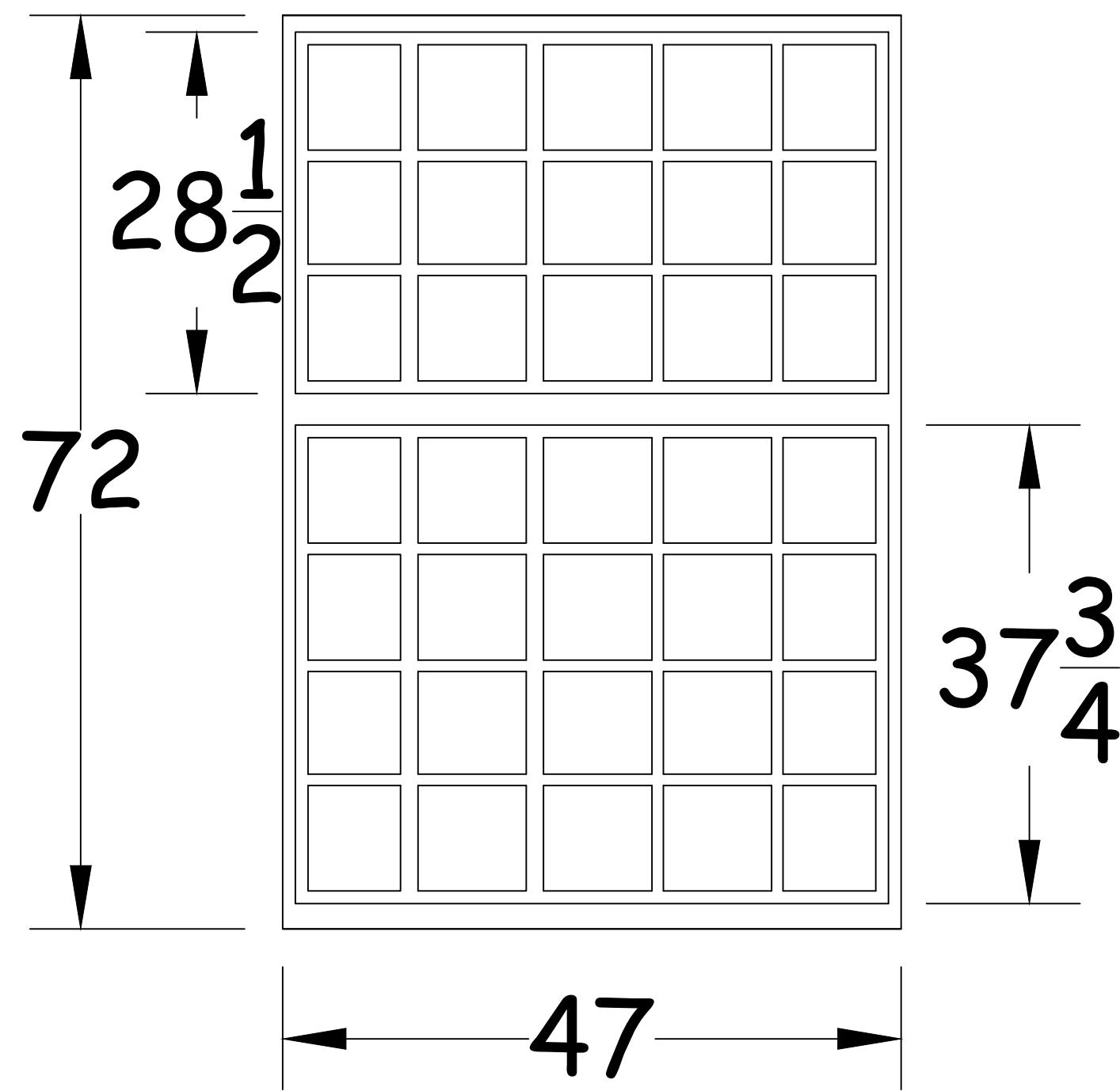
three inches = one foot
one and one half inches = one foot
one inch = one foot
three quarters inch = one foot
one half inch = one foot
one quarter inch = one foot
three eighths inch = one foot
one eighth inch = one foot
one eighth inch = one foot



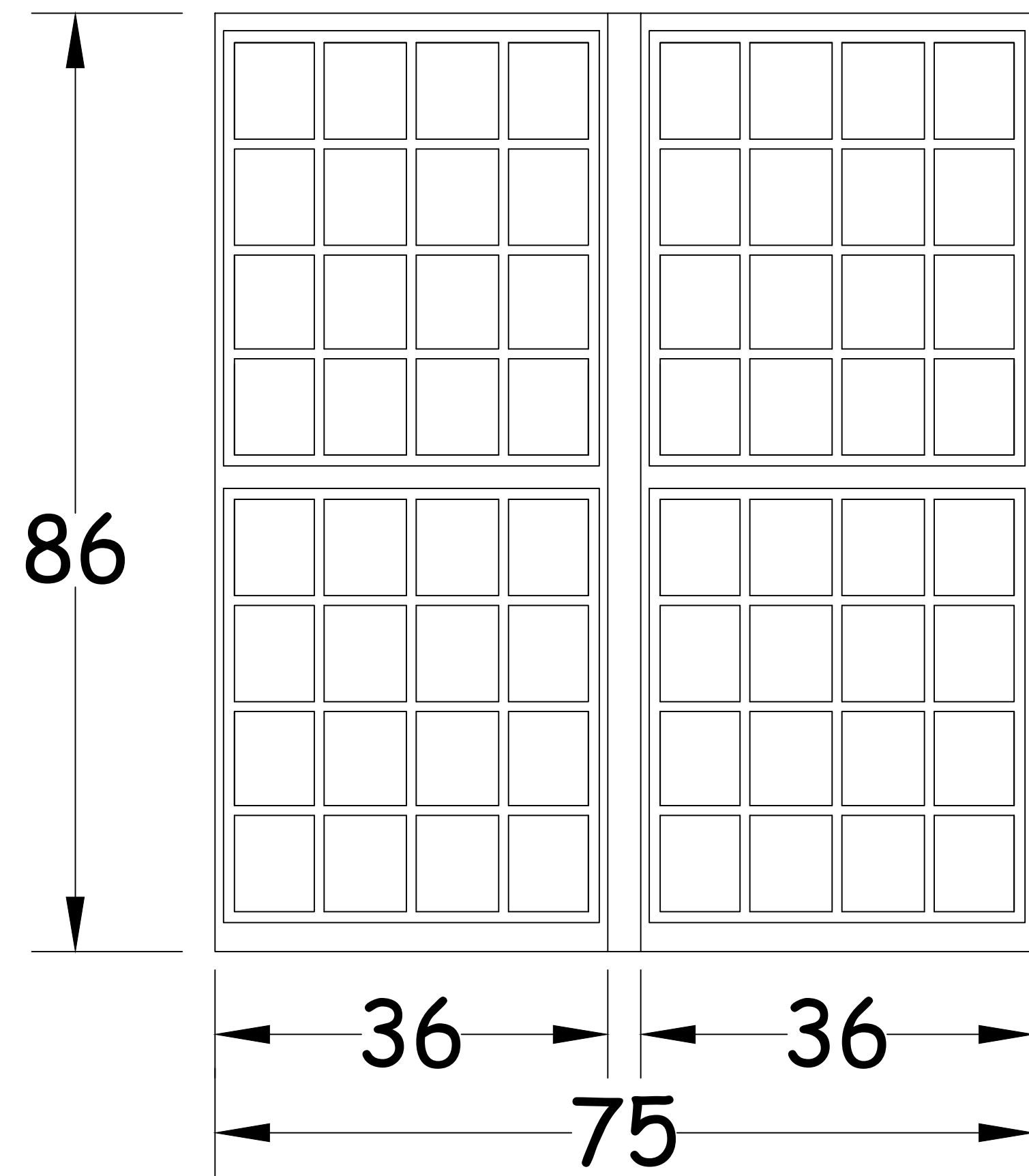
1 'A' WINDOW (TYP.)
SCALE 1" : 1'



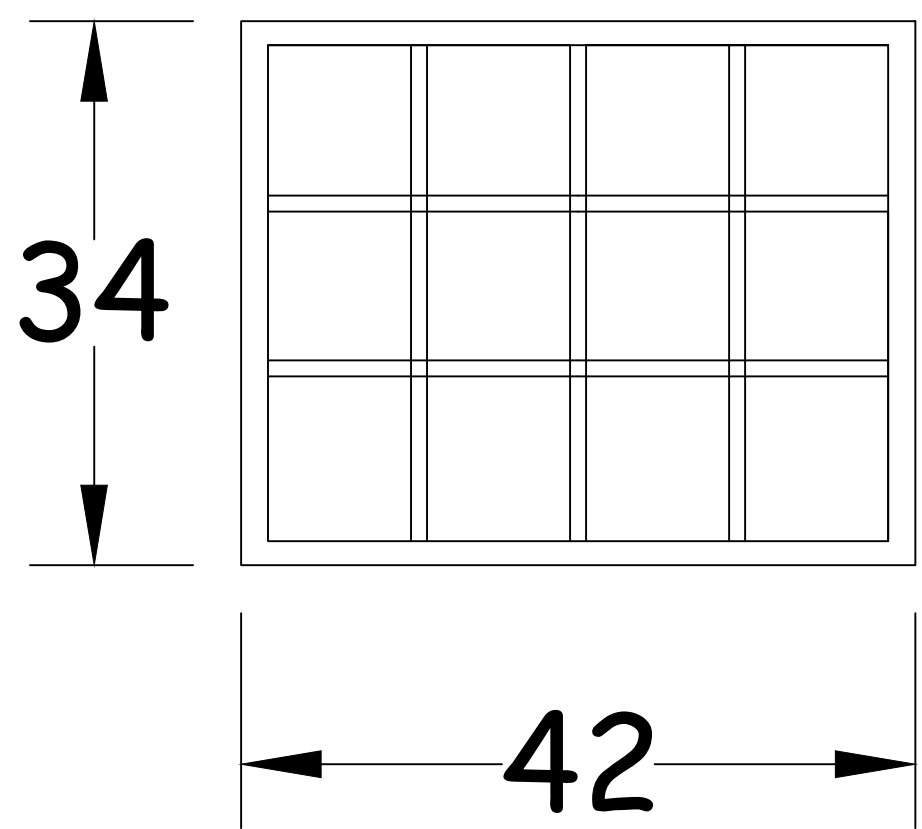
2 'B' WINDOW (TYP.)
SCALE 1" : 1'



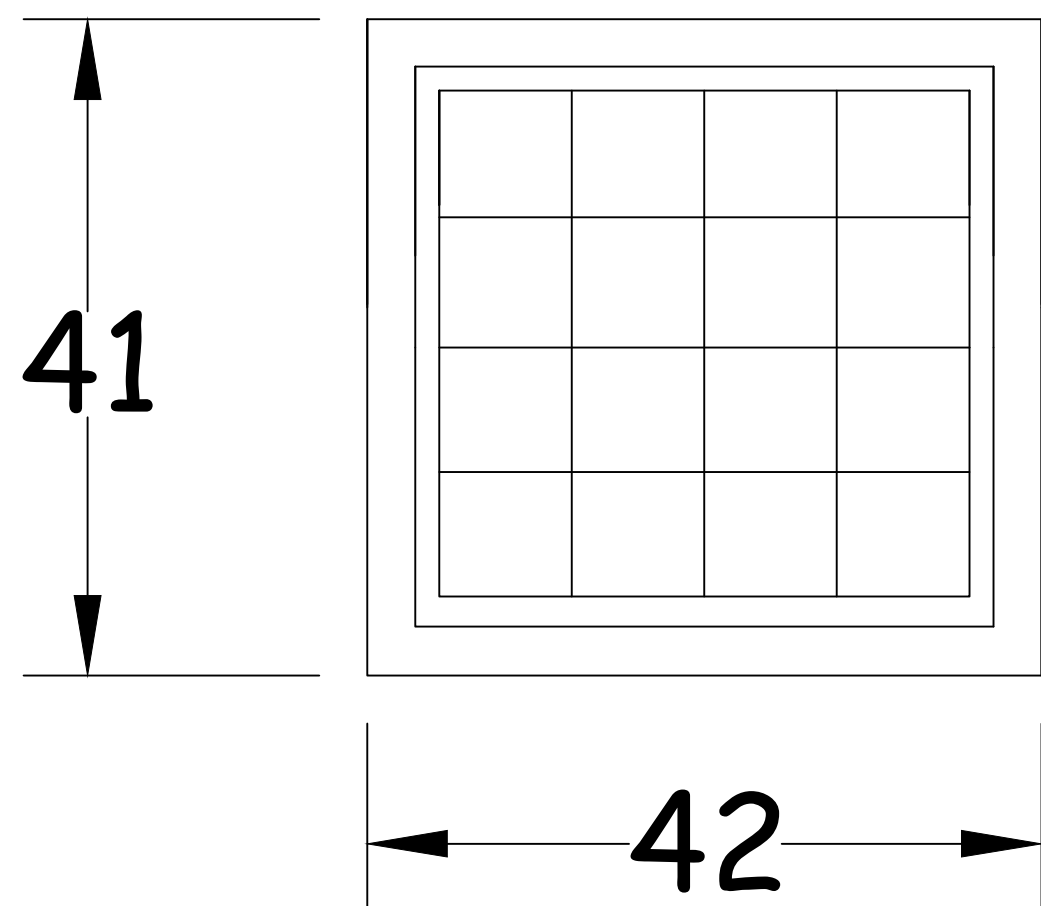
3 'C' WINDOW (TYP.)
SCALE 1" : 1'



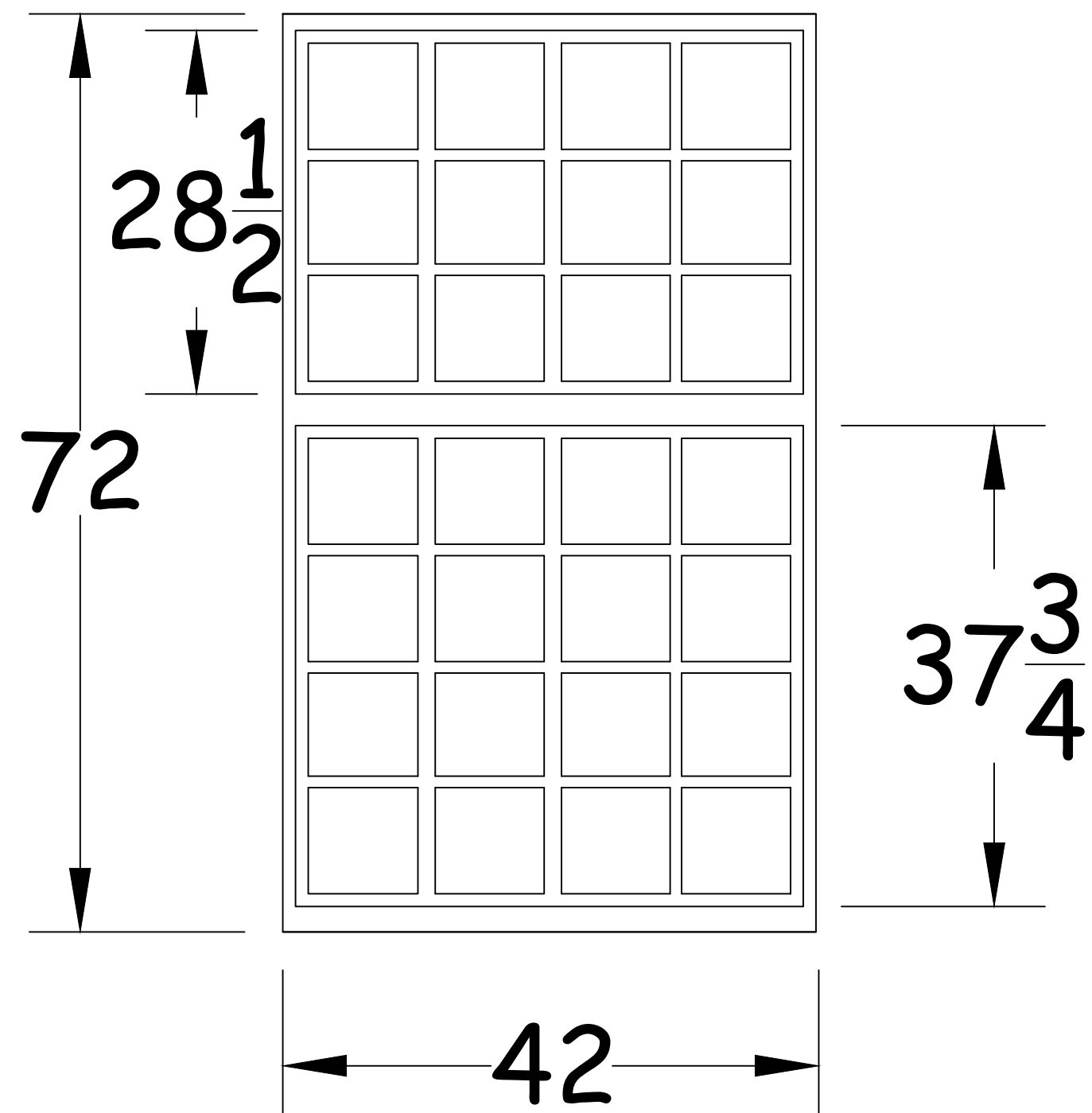
4 'D' WINDOW (TYP.)
SCALE 1" : 1'



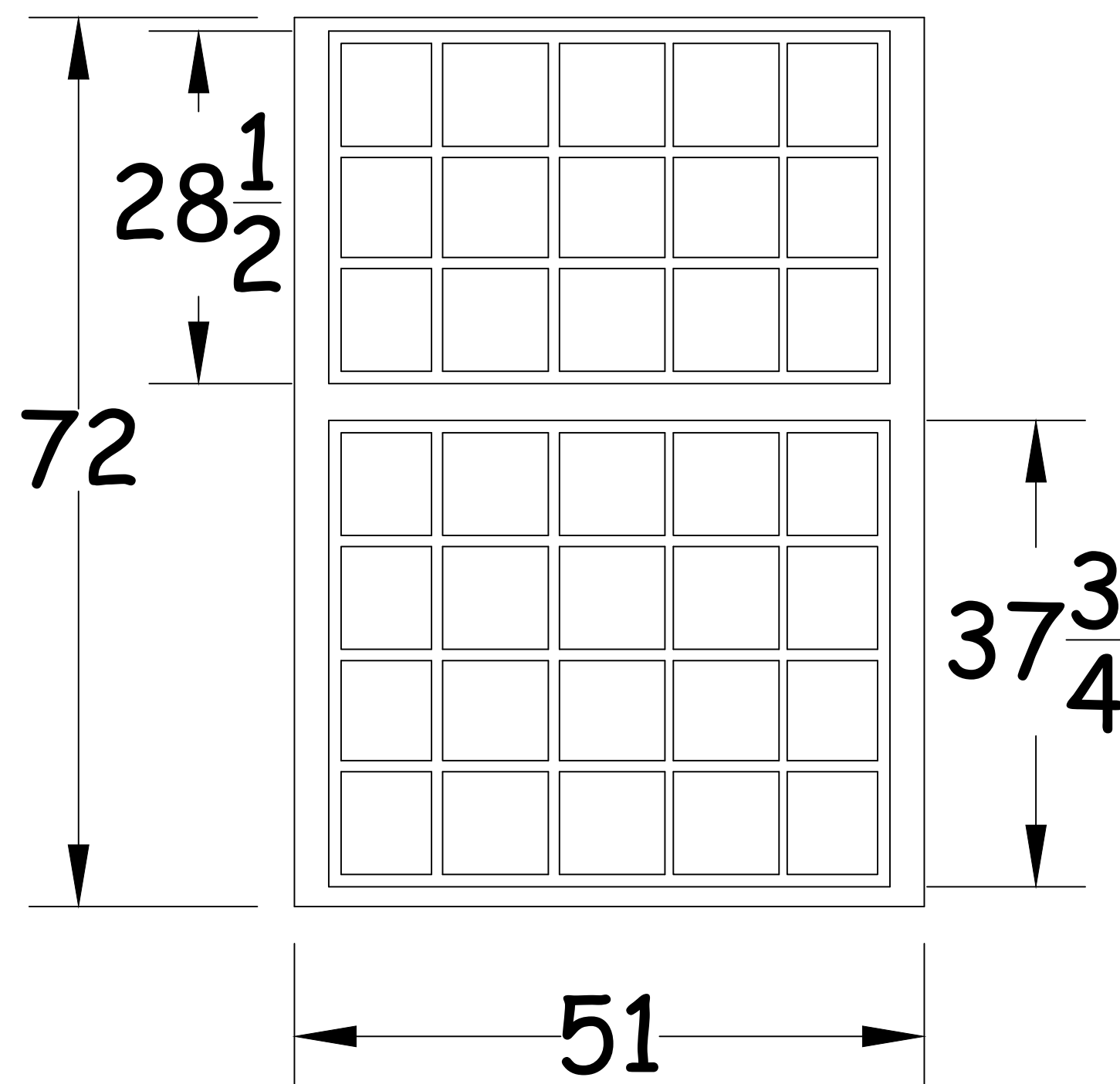
5 'E' WINDOW (TYP.)
SCALE 1" : 1'



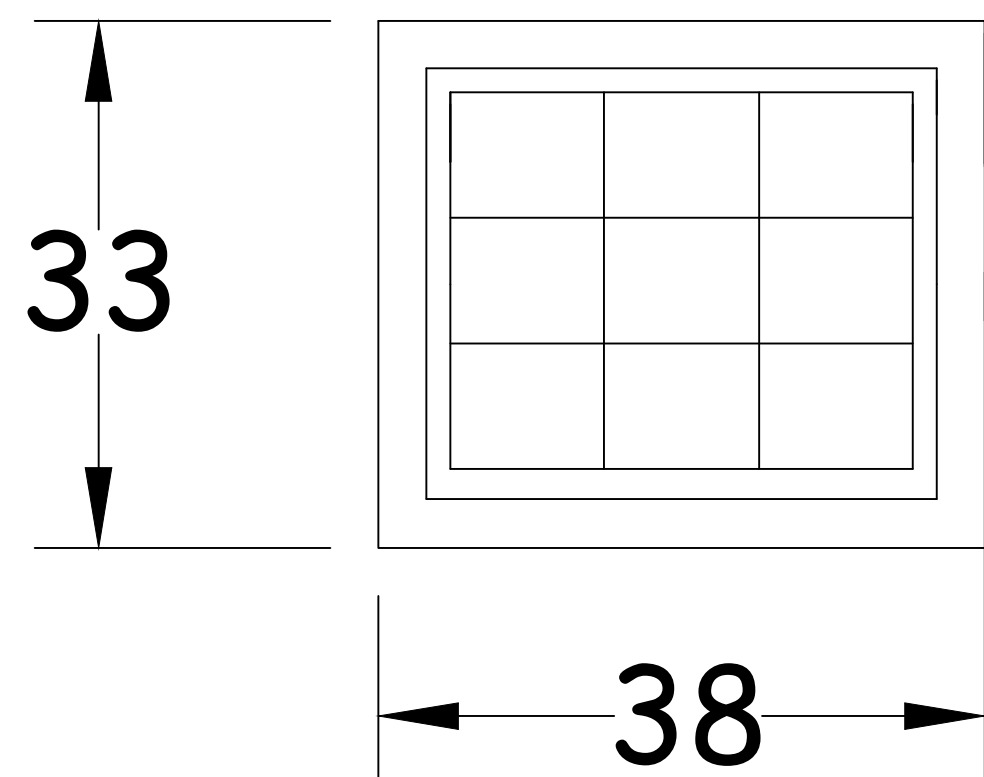
6 'F' WINDOW (TYP.)
SCALE 1" : 1'



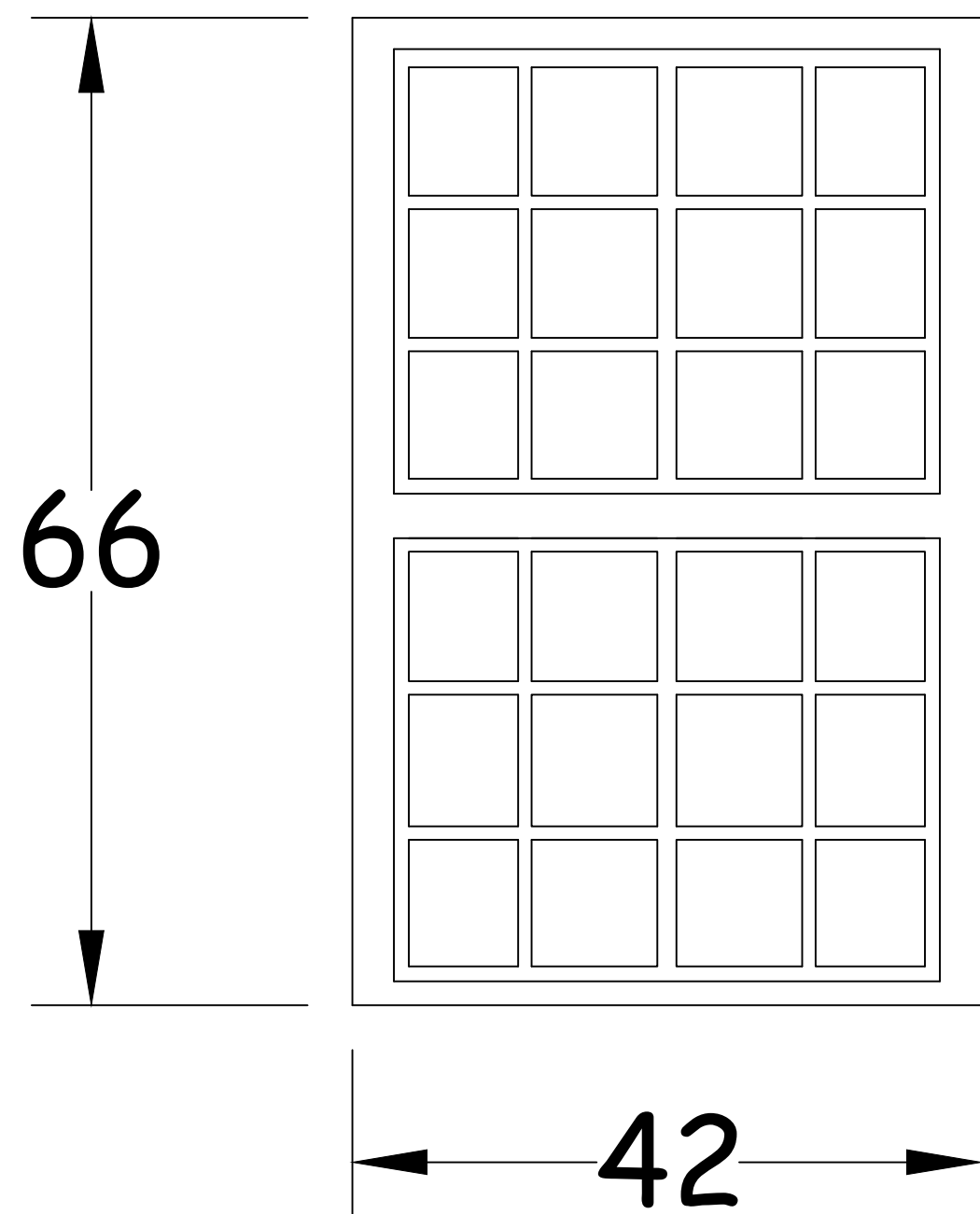
7 'G' WINDOW (TYP.)
SCALE 1" : 1'



8 'H' WINDOW (TYP.)
SCALE 1" : 1'



9 'I' WINDOW (TYP.)
SCALE 1" : 1'



10 'J' WINDOW (TYP.)
SCALE 1" : 1'

ALL DIMENSIONS ARE +/-, CONTRACTOR TO VERIFY IN FIELD

REVISIONS	DATE

DRAWING TITLE
WINDOW DETAILS
APPROVED PROJECT DIRECTOR
Yoder, Jacob

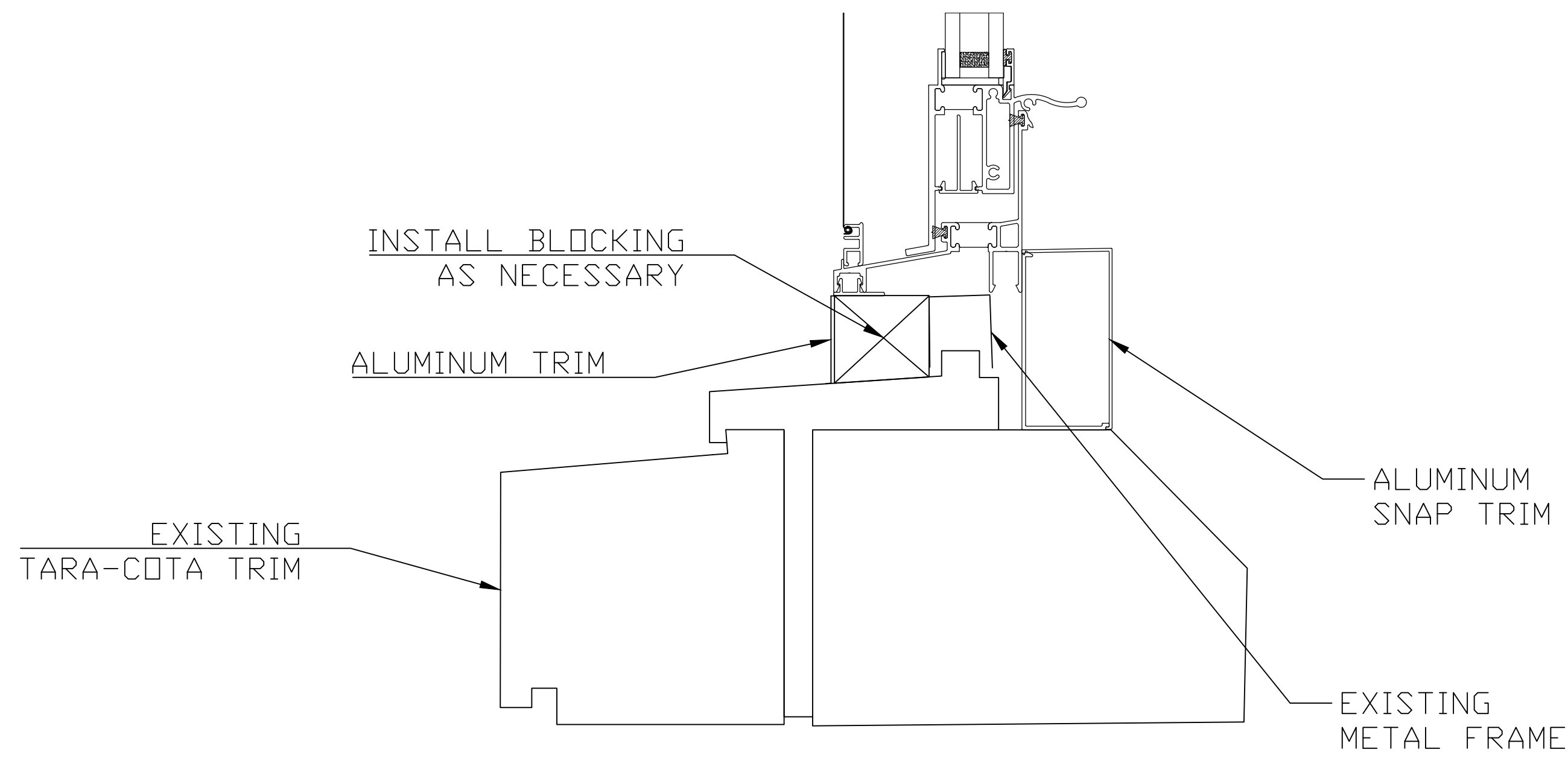
PROJECT TITLE
REPLACE WINDOWS BUILDING 36 GROUND AND FIRST FLOOR
LOCATION
400 FORT HILL AVE CANANDAIGUA, NY 14424
DATE
2-13-2019
CHECKED
ECS
DRAWN
JUN

PROJECT NUMBER
528A5-18-529
BUILDING NUMBER
36
DRAWING NUMBER
A-501
DWG. 8 of 10

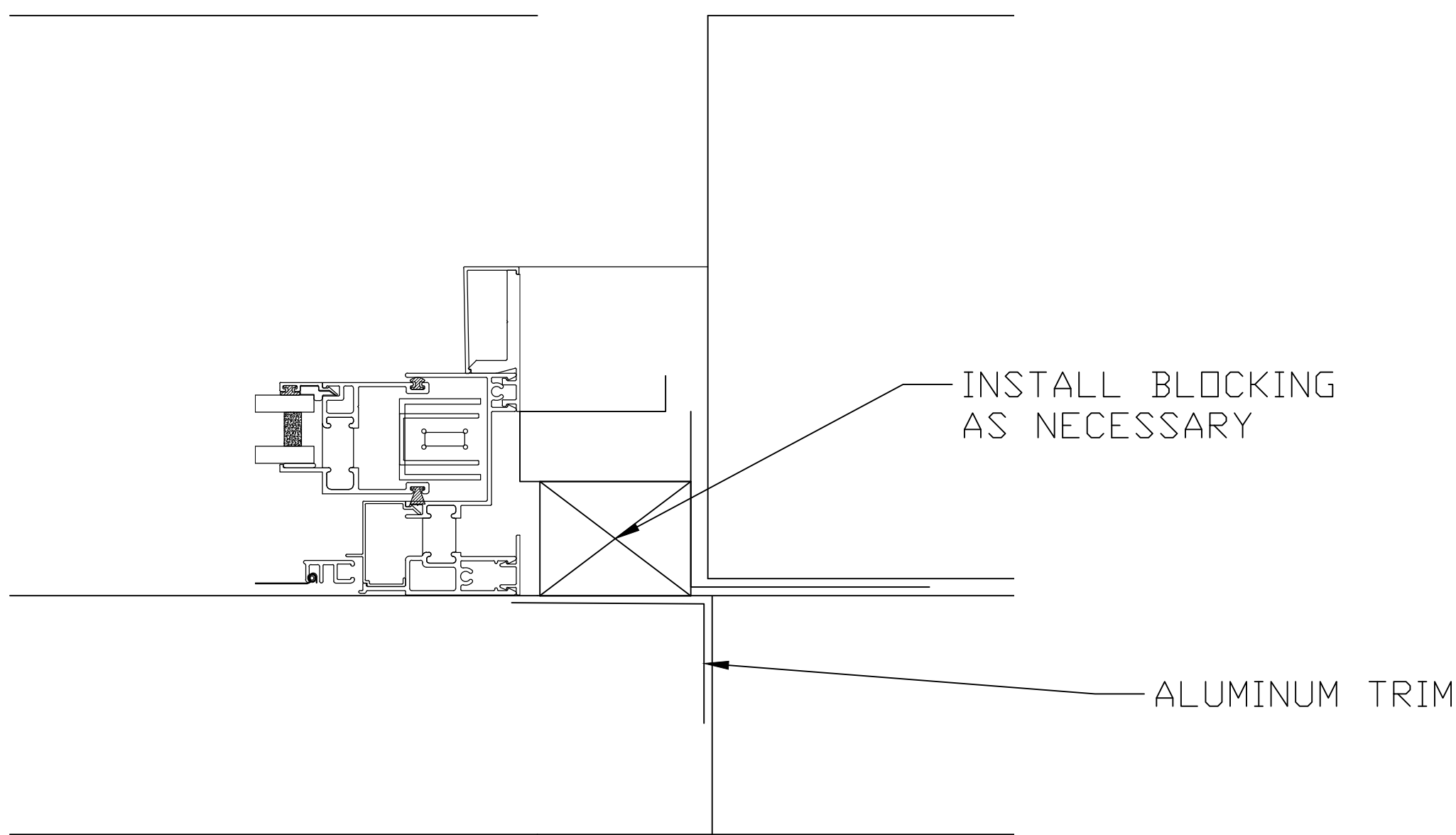
CANANDAIGUA
VA MEDICAL
CENTER
ENGINEERING
DEPARTMENT

ISSUED	DATE
--------	------

three inches = one foot
one and one half inches = one foot
one inch = one foot
three quarters inch = one foot
one half inch = one foot
one quarter inch = one foot
one eighth inch = one foot



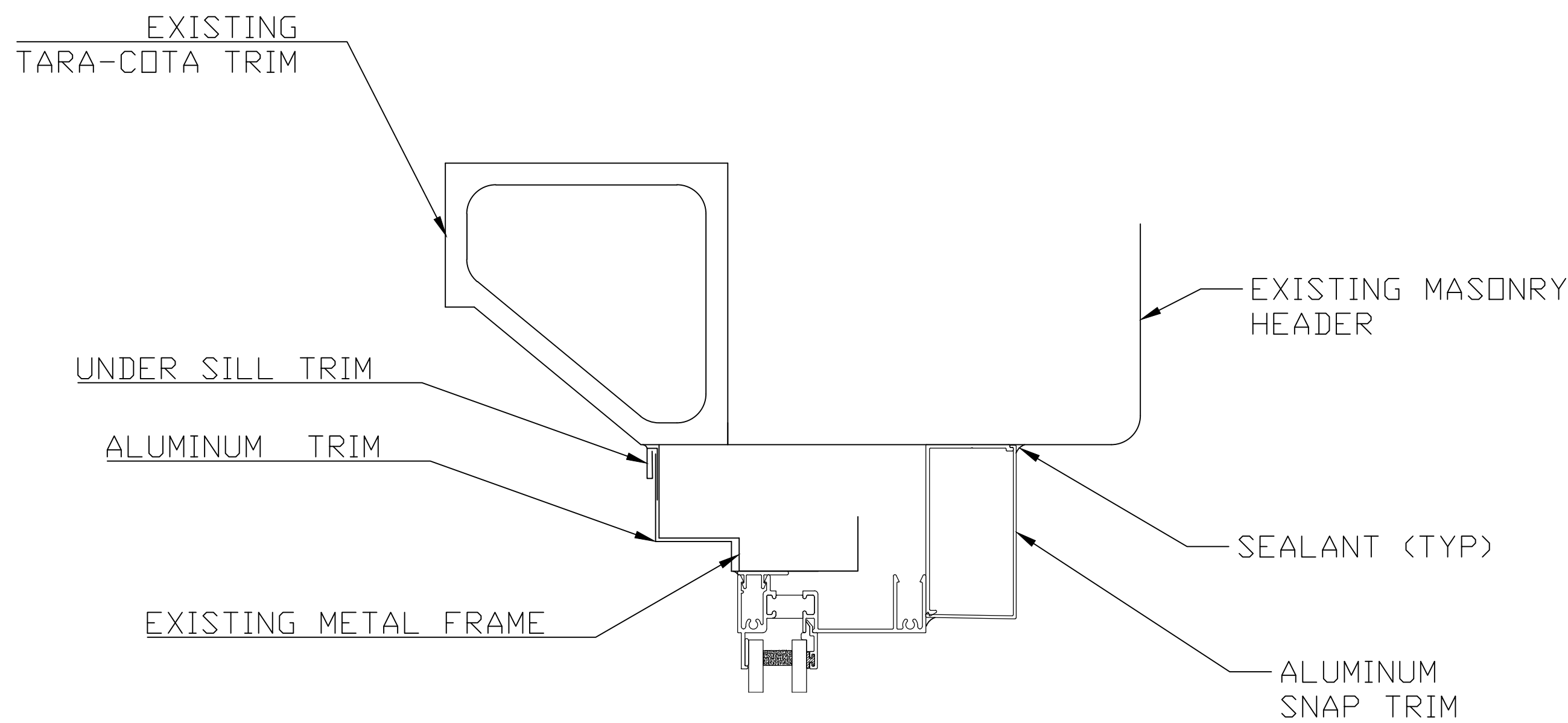
1 SILL DETAIL
SCALE NTS



2 JAMB DETAIL
SCALE NTS

SHEET NOTES:

1. CONTRACTOR TO PROVIDE SHOP DRAWINGS TO INCLUDE BLOCKING DETAILS, SNAP TRIM, AND FLASHING.
2. ALL WINDOWS TO HAVE THERMAL BREAK.
3. MANUFACTURERS DETAILS AND SPECIFICATIONS SUPERSEDE BID DRAWINGS.
4. ALL BLOCKING MUST BE FIRE-RATED.



3 HEAD DETAIL
SCALE NTS

ISSUED	DATE

REVISIONS	DATE

DRAWING TITLE
DETAILS
APPROVED PROJECT DIRECTOR
Yoder, Jacob

PROJECT TITLE
REPLACE WINDOWS BUILDING 36 GROUND AND FIRST FLOOR
LOCATION
400 FORT HILL AVE CANANDAIGUA, NY 14424
DATE
2-13-2019
CHECKED
ECS
DRAWN
JUN

PROJECT NUMBER
528A5-18-529
BUILDING NUMBER
36
DRAWING NUMBER
A-502
DWG. 9 of 10

CANANDAIGUA
VA MEDICAL
CENTER
ENGINEERING
DEPARTMENT

one eighth inch = one foot
one quarter inch = one foot
three eighths inch = one foot
one half inch = one foot
three quarters inch = one foot
one inch = one foot
one and one half inches = one foot
two inches = one foot
three inches = one foot

1 | 2 | 3 | 4 | 5 | 6 | 7 | 8 | 9

WINDOW SCHEDULE						
WINDOW TAG	WINDOW STYLE	WIDTH	HEIGHT	QUANTITY	MANUFACTURER	@ FLOOR(S)
A	DOUBLE HUNG COTTAGE	29"	72"	2	CONTRACTOR SUBMITTAL	36A
B	DOUBLE HUNG COTTAGE	38"	72"	87	CONTRACTOR SUBMITTAL	36A
C	DOUBLE HUNG COTTAGE	47"	72"	10	CONTRACTOR SUBMITTAL	36A
D	<2> DOUBLE HUNG COTTAGE	75"	86"	14	CONTRACTOR SUBMITTAL	36A
E	FIXED	42"	35"	46	CONTRACTOR SUBMITTAL	36G
F	FIXED	42"	41"	8	CONTRACTOR SUBMITTAL	36G
G	DOUBLE HUNG COTTAGE	42"	74"	12	CONTRACTOR SUBMITTAL	36G
H	DOUBLE HUNG COTTAGE	51"	72"	3	CONTRACTOR SUBMITTAL	36G
I	FIXED	38"	33"	2	CONTRACTOR SUBMITTAL	36G
J	FIXED	42"	66"	1	CONTRACTOR SUBMITTAL	36G
-	-	-	-	-	-	-

1 WINDOW SCHEDULE
SCALE N/A

ISSUED	DATE

REVISIONS	DATE

DRAWING TITLE
WINDOW SCHEDULE
APPROVED PROJECT DIRECTOR
Yoder, Jacob

PROJECT TITLE		
REPLACE WINDOWS BUILDING 36 GROUND AND FIRST FLOOR		
LOCATION 400 FORT HILL AVE CANANDAIGUA, NY 14424		
DATE	CHECKED	DRAWN
2-13-2019	JJN	DJK

PROJECT NUMBER
528AS-18-529
BUILDING NUMBER
36
DRAWING NUMBER
A-601
DWG. 10 of 10

CANANDAIGUA
VA MEDICAL
CENTER
ENGINEERING
DEPARTMENT

1 | 2 | 3 | 4 | 5 | 6 | 7 | 8 | 9