

SEQUENCE OF OPERATION

NORMAL

1. TO SERVE BUILDING #7 FROM NEW CHILLER: CLOSE VALVES #1, #2, #11 AND #14. OPEN VALVE #3.
2. TO OPERATE NEW CHILLER, CONDENSER PUMP AND COOLING TOWER: OPEN VALVES #6 AND #8. CLOSE VALVES #4, #5 AND #7.

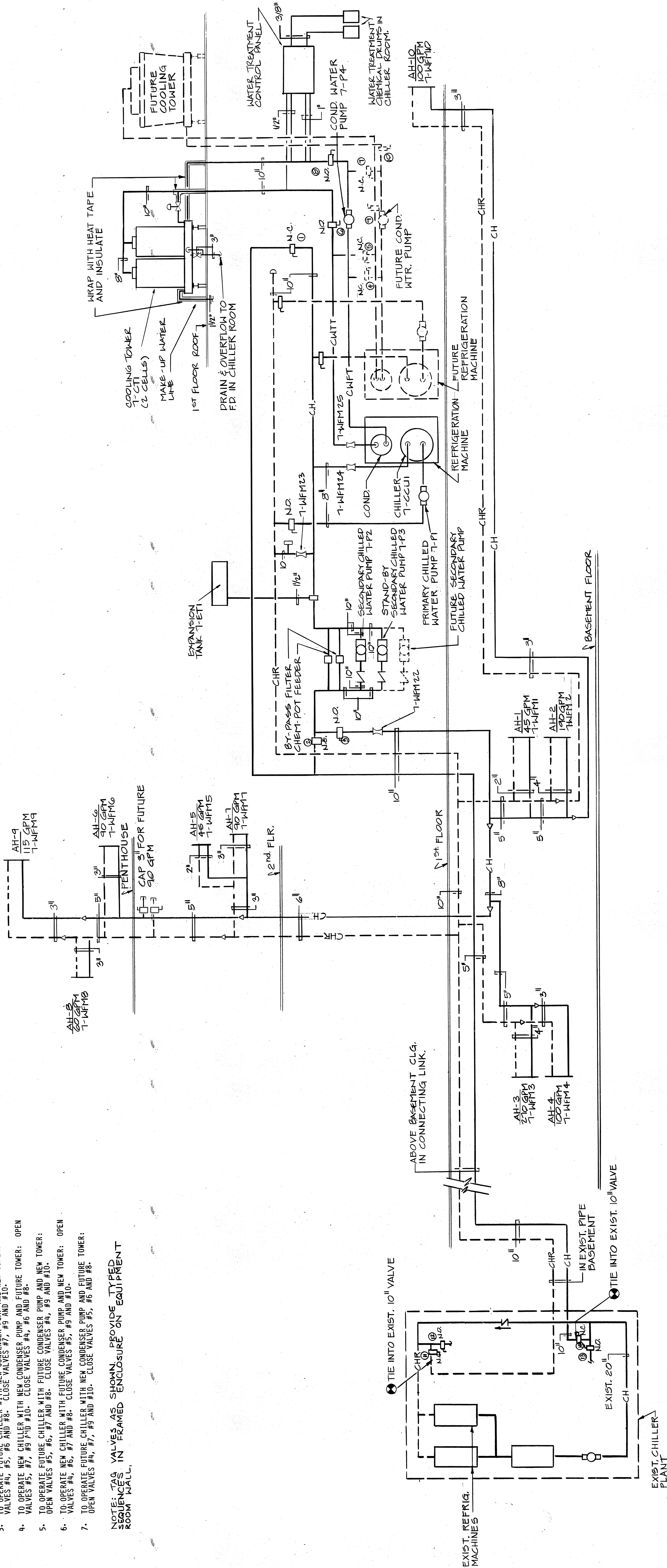
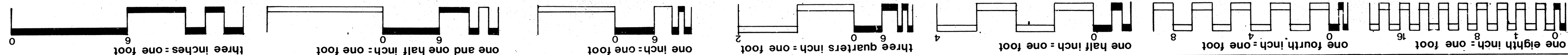
EXISTING BUILDING

1. TO SERVE BUILDING #7 FROM EXISTING BUILDING PUMPS AND CHILLERS: OPEN VALVES #2, #5, #9, #11 AND #14. CLOSE VALVES #2, #12 AND #13.
2. TO SERVE BUILDING #7 FROM EXISTING BUILDING CHILLERS AND BUILDING #7 PUMPS: OPEN VALVES #1, #5, #11 AND #14. CLOSE VALVES #2, #12 AND #13.

FUTURE

1. TO OPERATE FUTURE CHILLER, CONDENSER PUMP AND COOLING TOWER: OPEN VALVES #9 AND #10. CLOSE VALVES #4, #5 AND #7.
2. TO OPERATE NEW CHILLER WITH FUTURE CONDENSER PUMP AND FUTURE TOWER: OPEN VALVES #4, #5, #9 AND #10. CLOSE VALVES #6, #7 AND #8.
3. TO OPERATE FUTURE CHILLER WITH NEW CONDENSER PUMP AND NEW TOWER: OPEN VALVES #4, #5, #6 AND #8. CLOSE VALVES #7, #9 AND #10.
4. TO OPERATE NEW CHILLER WITH NEW CONDENSER PUMP AND FUTURE TOWER: OPEN VALVES #5, #7, #9 AND #10. CLOSE VALVES #4, #6 AND #8.
5. TO OPERATE FUTURE CHILLER WITH FUTURE CONDENSER PUMP AND NEW TOWER: OPEN VALVES #5, #6, #7 AND #8. CLOSE VALVES #4, #9 AND #10.
6. TO OPERATE NEW CHILLER WITH FUTURE CONDENSER PUMP AND FUTURE TOWER: OPEN VALVES #4, #5, #7 AND #8. CLOSE VALVES #5, #9 AND #10.
7. TO OPERATE FUTURE CHILLER WITH NEW CONDENSER PUMP AND FUTURE TOWER: OPEN VALVES #4, #7, #9 AND #10. CLOSE VALVES #5, #6 AND #8.

NOTE: TAG VALVES AS SHOWN. PROVIDE TYPED SEQUENCES IN FRAMED ENCLOSURE ON EQUIPMENT ROOM WALL.



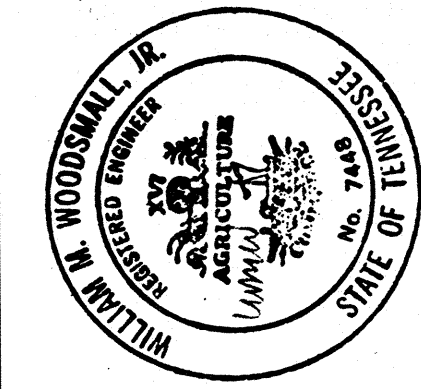
CHILLED WATER FLOW DIAGRAM

A JOINT VENTURE OF:

YEATES, GASKILL, RHODES, ARCHITECTS, INC.
CROMWELL, TRUEMPER, LEVY, PARKER & WOODSMALL, INC., ARCHITECTS - ENGINEERS
PICKERING, WOOTEN, SMITH & WEISS, INC., CONSULTING ENGINEERS
THOMPSON - MILLER ARCHITECTS, INC.

RECORD DRAWINGS 4.1.67

Date	4-1-83	Project Title	120 BED S.C.I. UNIT
Project No.	614-014	NO SCALE	
DRAWING NO.	7-H26	Drawn	T.H.
		Building Number	7
		Location	V.A.M.C. MEMPHIS



6-7-8-0212

Revisions