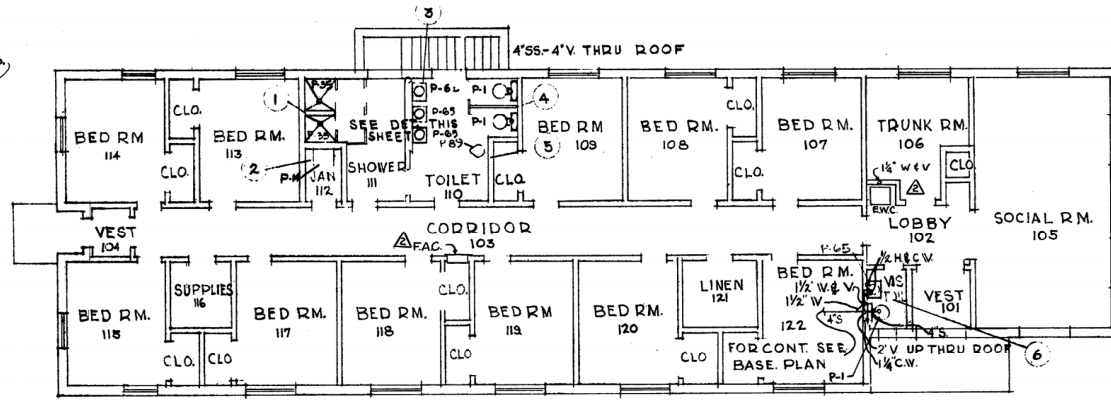
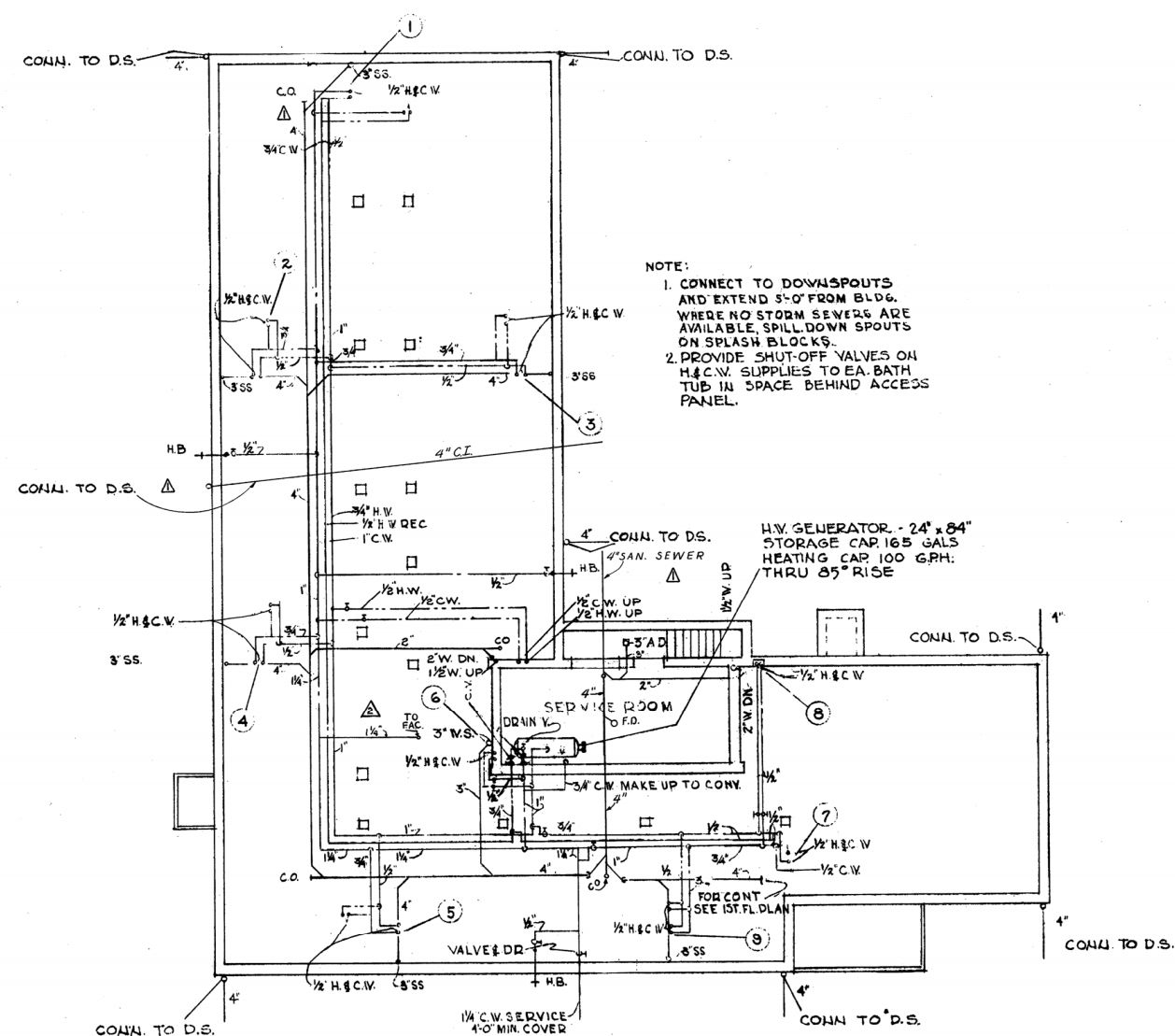


BASEMENT PLAN A  
SCALE 1/8"=1'-0"

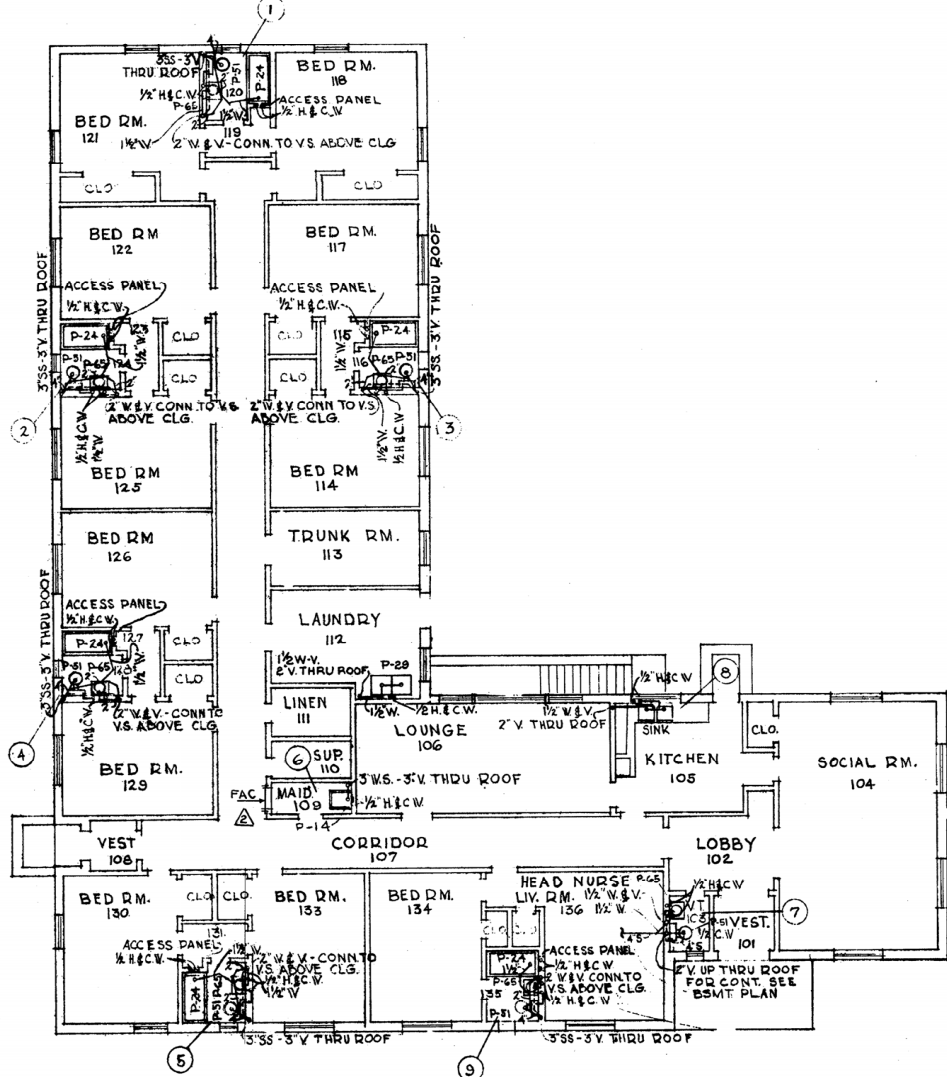


FIRST FLOOR PLAN  
SCALE 1/8"=1'-0"

~~ATTENDANTS QUARTERS 500 BED~~  
MENTAL HYGIENE CLINIC Bldg #8

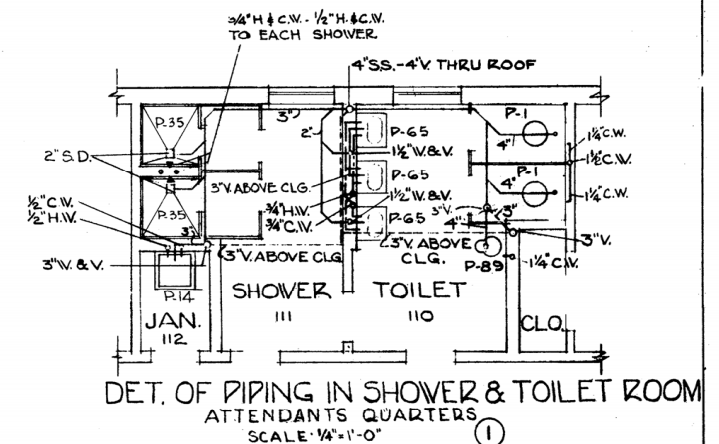


BASEMENT PLAN A  
SCALE 1/8"=1'-0"



FIRST FLOOR PLAN  
SCALE 1/8"=1'-0"

~~NURSES QUARTERS 500 BED~~  
ADMINISTRATIVE OFFICE Bldg. #6



LEGEND

— SOIL OR WASTE	C.V. CHECK VALVE
— VENT	A.D. AREA DRAIN
— COLD WATER	S.D. SHOWER DRAIN
— HOT WATER	H.B. HOSE BIBB
— H.V. RECIRCULATING	S.S. SOIL STACK
— CHECK VALVE	W. WASTE
— VALVE - GLOBE OR GATE	V. VENT
— VALVES FOR H.B. TO BE	C.O. CLEAN OUT
— VALVE & DRAIN TYPE	

FIXTURE SCHEDULE

P-51 WATER CLOSET, FLUSH TANK
R-65 LAVATORY
R-24 BATH TUB
R-14 SERVICE SINK
P-25 SHOWER
P-29 URINAL
P-23 LAUNDRY TRAY
P-1 WATER CLOSET, FLUSH VALVE

OMAHA V.A. HOSPITAL

12-18-50	REVISED TO SHOW "AS-BUILT" CONDITIONS.	E.W.F.
1-21-49	General Revision (O.C.E.)	F.P.M.
11-19-48	General Revision (Omaha District)	CAC

REVISION	DATE	DESCRIPTION	BY
1	12-18-50	FAULKNER, KINGSBURY & STENHOUSE WASHINGTON, D. C. ARCHITECTS & ENGINEERS	WAR DEPARTMENT OFFICE OF THE CHIEF OF ENGINEERS WASHINGTON, D. C.

DRAWN BY: CRAMER  
CHECKED BY: JOHNSON  
CHECKED BY: HODGSON  
APPROVED: [Signature]  
DATE: 13 AUG. 1948

VETERANS ADMINISTRATION  
HOSPITAL STANDARD QUARTERS  
NURSES & MALE ATTENDANTS' QUARTERS  
500 BED HOSPITAL  
PLUMBING PLANS

APPROVED FOR THE CHIEF OF ENGINEERS: [Signature]  
DATE: 9 Sep 1948

SCALE AS NOTED SPEC. NO. 25-060-49-177  
DRAWING NUMBER: 25-13-01  
SHEET 5 OF 7