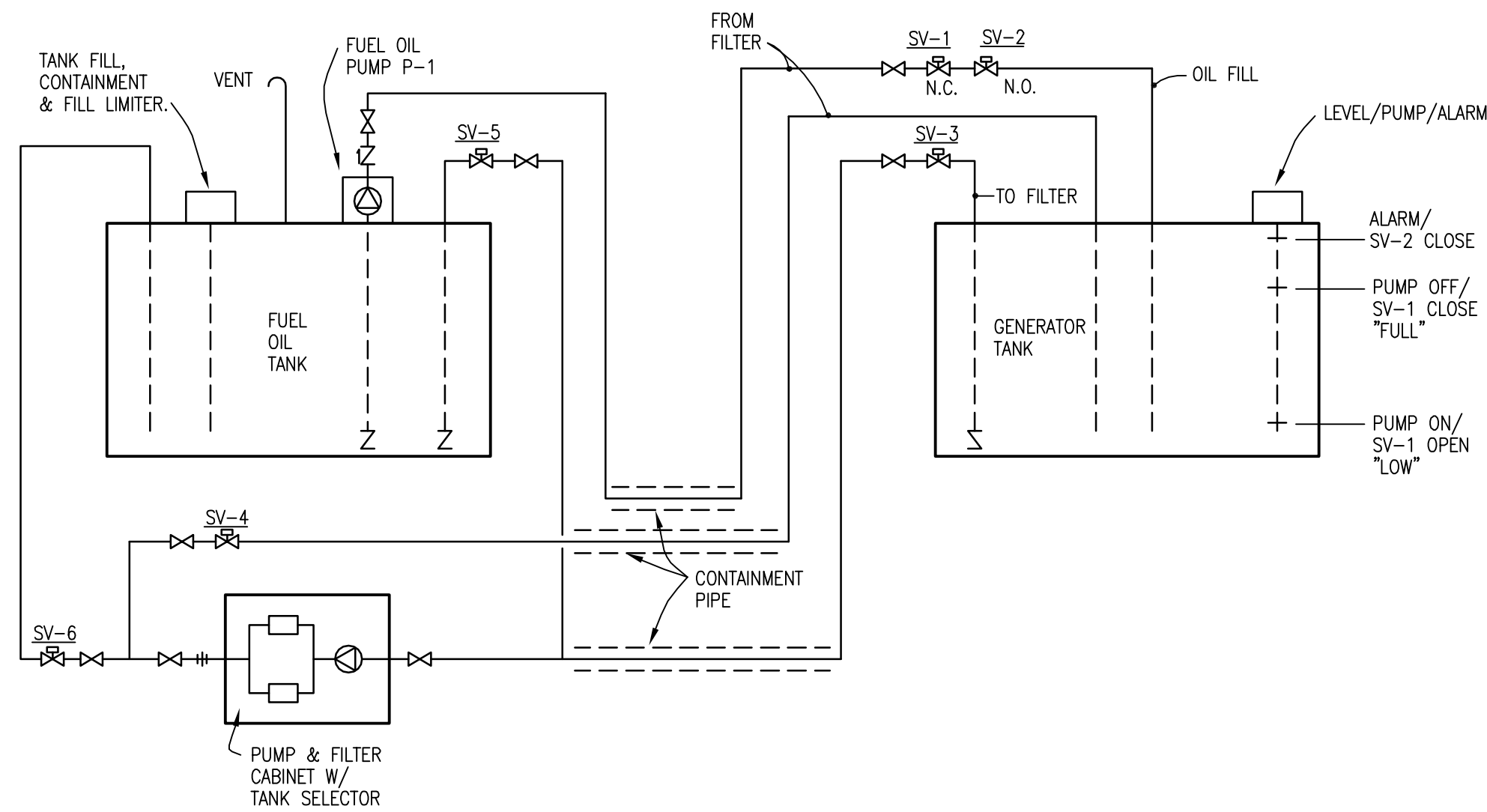


three inches = one foot
one and one half inches = one foot
one inch = one foot
three quarters inch = one foot
one half inch = one foot
three eighths inch = one foot
one quarter inch = one foot
one eighth inch = one foot



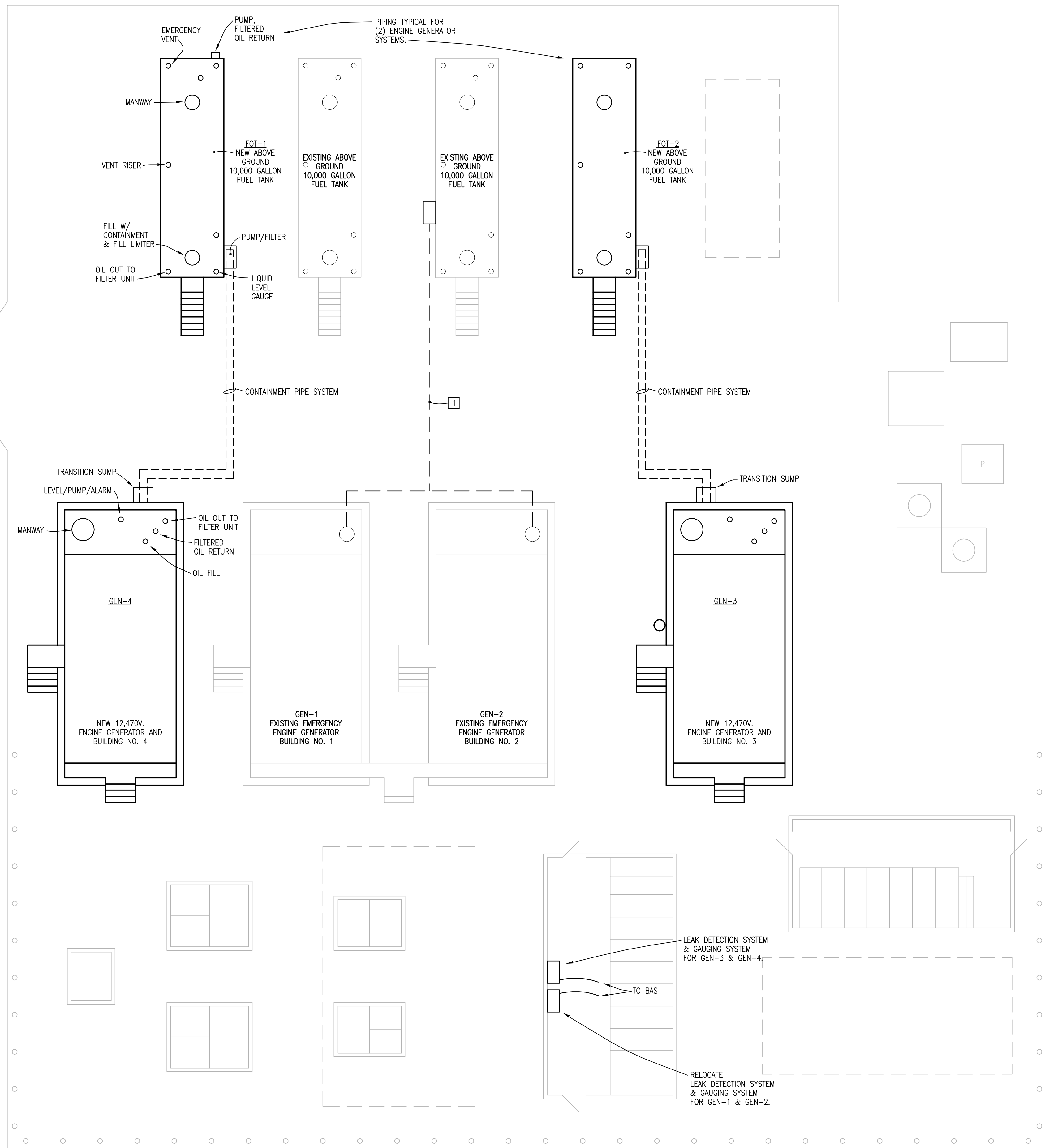
1 FUEL OIL SCHEMATIC
MP-110 SCALE: NONE

- NOTES:
1. ALL PIPES SHALL BE 1-1/2" BLACK STEEL, SCH. 80.
 2. ALL PIPES IN GROUND SHALL BE DOUBLE WALLED CONTAINMENT TYPE WITH LEAK DETECTION.
- SEQUENCE OF OPERATION:
1. SV-4/SV-6 & SV-3/SV-5 SHALL ALTERNATE OPEN/CLOSED ON TIME CYCLE TO PROVIDE FILTRATION OF OIL IN BOTH TANKS.
 2. WHEN OIL LEVEL IN GENERATOR TANK FALLS TO "LOW" LEVEL, SV-1 OPENS & PUMP P-1 STARTS.
 3. WHEN OIL LEVEL IN GENERATOR TANK REACHES "FULL" LEVEL, SV-1 CLOSSES & PUMP P-1 STOPS.
 4. SHOULD GENERATOR TANK OIL LEVEL REACH ALARM LEVEL, SV-2 SHALL CLOSE & AN ALARM SHALL SOUND.



2 EXISTING GENERATOR OIL FILL (TYPICAL 2)
MP-110 SCALE: NONE

- KEYED NOTES:
- 1 AFTER INSTALLATION OF GENERATORS 3 & 4, AND THEY ARE OPERATIONAL, UPGRADE THE TRANSFER & FILL SYSTEM TO GENERATORS 1 & 2. WORK SHALL INCLUDE:
 - A) ADDITION OF THREADED OUTLETS TO BELLY TANKS.
 - B) NEW CONTAINMENT PIPES BETWEEN BULK TANKS & GENERATOR TANKS.
 - C) ADDITION OF AUTOMATIC FILL CONTROL DEVICES TO BELLY TANKS ON GENERATORS 1 & 2 TO REPLACE HAND NOZZLE.
 - D) ADDITION OF LEAK DETECTION TO CONTAINMENT PIPES.



- NOTES:
1. ALL INGROUND PIPES TO BE DOUBLE WALL WITH LEAK DETECTION.

FUEL OIL PIPING - SERVICE EQUIPMENT YARD
SCALE: 1/8" = 1'-0"

Revisions	Date	CONSULTANTS:	ARCHITECT/ENGINEERS:	Architect Project No. 001-10017-006	Drawing Title FUEL OIL SYSTEM FOR SERVICE EQUIPMENT YARD AREA F	Project Title UTILITY UPGRADES PHASE 2	Project Number 520HS2317H	Office of Construction and Facilities Management Department of Veterans Affairs	
			BlitchKnevel JOINT VENTURE LEO A DALY PLANNING ARCHITECTURE ENGINEERING INTERIORS EST. 1915	757 St. Charles Avenue New Orleans, LA 70130 USA Tel 504-524-4634 Fax 504-524-5128	8600 Indian Hills Drive Omaha, NE 68114-4039 USA Tel 402-391-8111 Fax 402-391-8564	Location BILOXI, MS	Building Number		
						Date 3 DECEMBER 2008	Checked CRM		Drawn DJW