

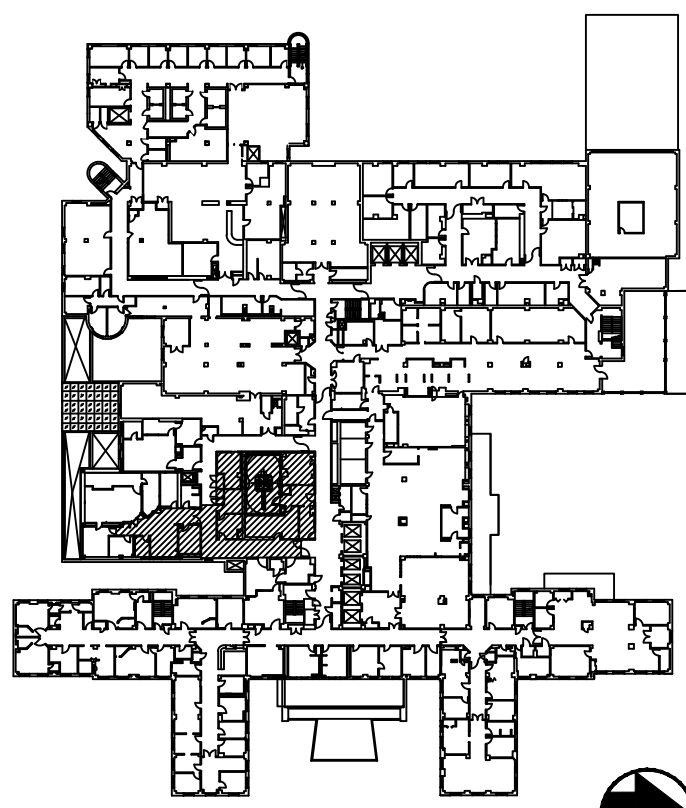
**2ND FLOOR NEW LIGHTING ELECTRICAL**

GRAPHIC SCALE SUPERSEDES NUMERIC SCALE  
0 2' 4' 8'  
SCALE: 1/4" = 1'-0"

LUMINAIRE SCHEDULE						
SYMBOL	LABEL	QTY	CATALOG #	DESCRIPTION	LAMP	WATTS
	A	2	LITHONIA #2GT8 4 32 A12.125 MVOLT GEB10IS LP735	GT8 GENERAL PURPOSE T8 TROFFER 2'X4' 2 LP T8 #A12 LENS 1/2 ELEC	TWO 32-WATT T8 LINEAR FLUORESCENT	58
	AS	7	LITHONIA #2M4 32 A12.125 MVOLT GEB10IS LP735	GT8 GENERAL PURPOSE T8 TROFFER 2'X4' 2 LP T8 #A12 LENS 1/2 ELEC SURFACE MOUNTED WITH STEEL HOUSING	TWO 32-WATT T8 LINEAR FLUORESCENT	58
	B	3	LITHONIA #2GT8 2 32 A12.125 MVOLT GEB10IS	GT8 GENERAL PURPOSE T8 TROFFER 2'X4' 2 LP T8 #A12 LENS 1/2 ELEC	TWO 32-WATT T8 LINEAR FLUORESCENT	58
	C	4	SKY FACTORY LUMINOUS SKY-CEILING	2X4 SKY FACTORY LUMINOUS SKYCEILING, 2 LAMP T5 32 WATT, ACRYLIC LENS W/ CLOUD PATTERN	TWO 32-WATT T5 LINEAR FLUORESCENT	58
	D	4	LITHONIA #2AV G 2 32 MDR MVOLT GEB10IS LP735	2X4 AVANTE, RECESSED, 2 LAMP T8 32 WATT, METAL DIFFUSER W/ ROUND PERFORATIONS BACKED W/ ACRYLIC OVERLAY	TWO 32-WATT T8 LINEAR FLUORESCENT	58
	EXIST.	8		RE-USE EXISTING FIXTURE		
	EXIST.	4		RELOCATED EXISTING FIXTURES		
	F	1	LITHONIA #C 2 32 MVOLT	GENERAL PURPOSE T8 LINEAR T8 ELEC	TWO 32-WATT T8 LINEAR FLUORESCENT	58
	G	1	LITHONIA LB 2 32	ARCHITECTURAL WRAP-AROUND 1X4 SURFACE MOUNT	TWO 32-WATT T8 LINEAR FLUORESCENT	58
				NEW EMERGENCY LIGHTING DEVICE	SELECT IN ORDER TO MEET NFPA REQUIREMENTS FOR EGRESS LIGHTING	

**GENERAL NOTES**  
1. ALL LIGHTING CIRCUITS TO BE FED FROM EXISTING LIGHTING CIRCUIT FEEDERS.  
2. EMERGENCY LIGHTING SHALL BE PROVIDED IN ACCORDANCE WITH NFPA 101, SECTION 18.2.9.1. EMERGENCY LIGHTING SHALL PROVIDE A MINIMUM 1.0 FT-CANDLE RATING ALONG PATH, WITH A MINIMUM OF 0.1 FT-CANDLES AT FLOOR LEVEL ALONG EGRESS PATH (PER NFPA 101 SECTION 7.9). ALL EMERGENCY EGRESS LIGHTING SHALL CONFORM TO ANSI/UL 924.

**KEYNOTES**  
1. LIGHTS IN CORRIDOR SHALL BE FED FROM EXISTING CORRIDOR CIRCUITS AND SWITCHES.  
2. ELECTRICAL CONTRACTOR SHALL VERIFY EXISTING LOADS ON LIGHTING CIRCUIT TO ENSURE ADDITION OF NEW LIGHTS IN HALLWAY DOES NOT EXCEED 80% OF CIRCUIT CAPACITY.  
3. LIGHTS TO BE FED FROM EXISTING PANEL BMRI IN MRI EQUIPMENT ROOM. SEE SHEET E2.1 FOR PANEL LOCATION.  
4. EMERGENCY LIGHTING LOCATION IS REPRESENTATIVE ONLY. CONTRACTOR SHALL SELECT EMERGENCY LIGHTING SYSTEMS, LAYOUT, AND LOCATIONS IN ACCORDANCE WITH NFPA REQUIREMENTS FOR EGRESS LIGHTING.



**RECORD DRAWINGS T-659**

**PARADIGM**  
ENGINEERS AND CONSTRUCTORS  
PO BOX 498223  
Louisville, Kentucky 40253  
502-338-8511 www.paradigmusa.com

CARDIAC CATH LAB  
SITE PREPARATION  
PROJECT: 603-09-704  
VA MEDICAL CENTER  
800 Zoum Ave.  
Louisville, Kentucky 40206

Department of  
Veterans Affairs

DATE	
REVISIONS	
1	
2	
3	
4	
5	
6	
7	
8	
9	

CONV. NO.	
MADE BY JEM	CHECKED HB
DATE 05-21-12	
NEW LIGHTING	
DRAWING NO. E2.0	BD FIG.