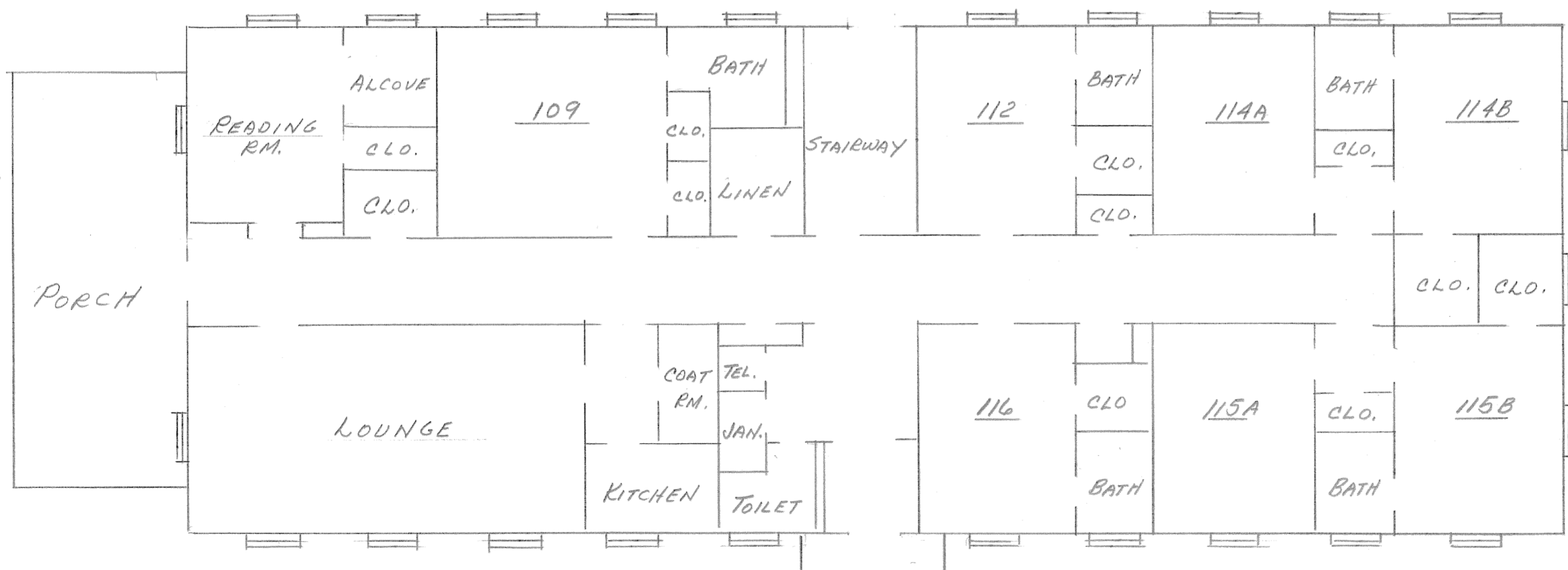


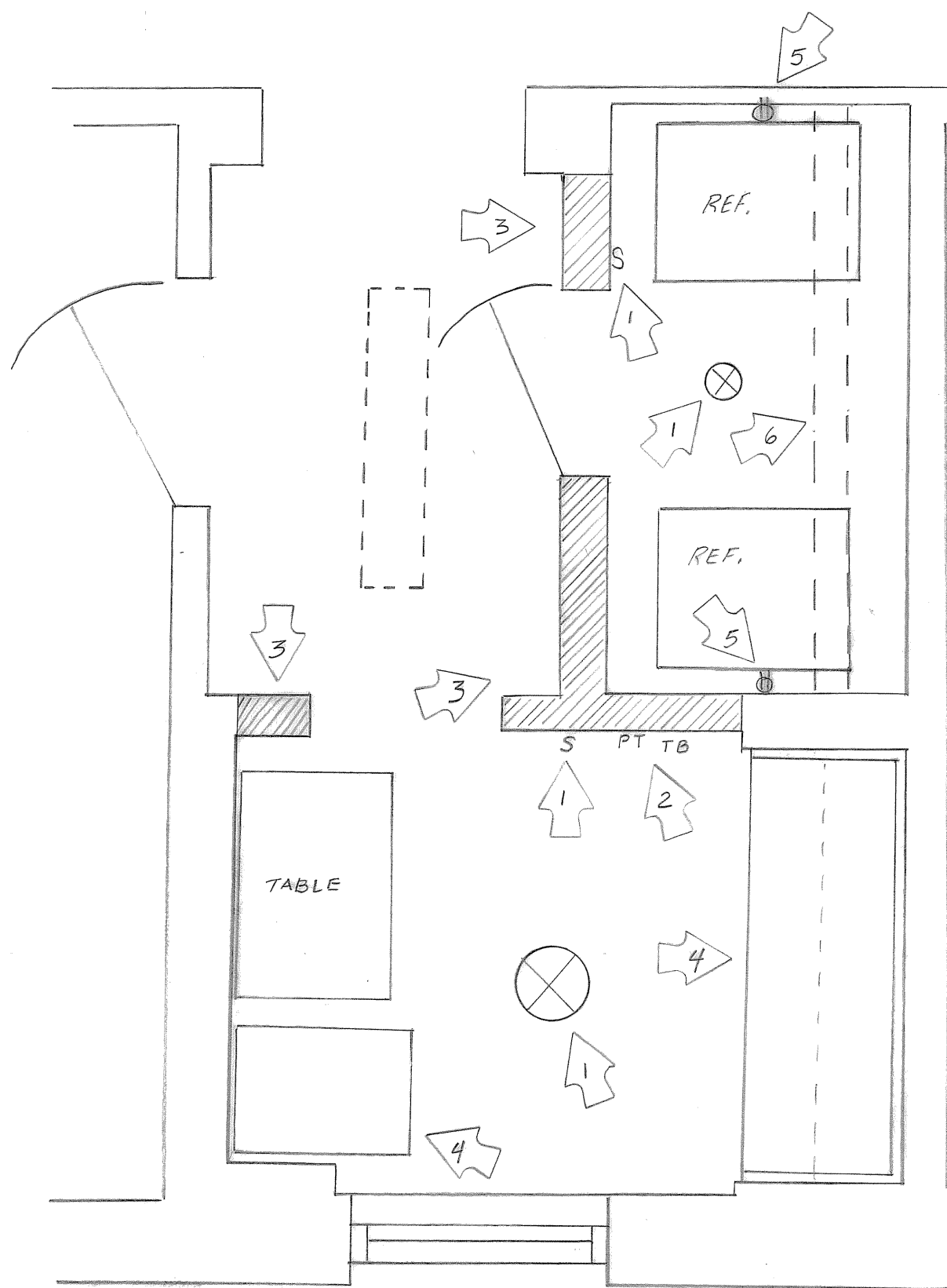


SECOND FLOOR PLAN

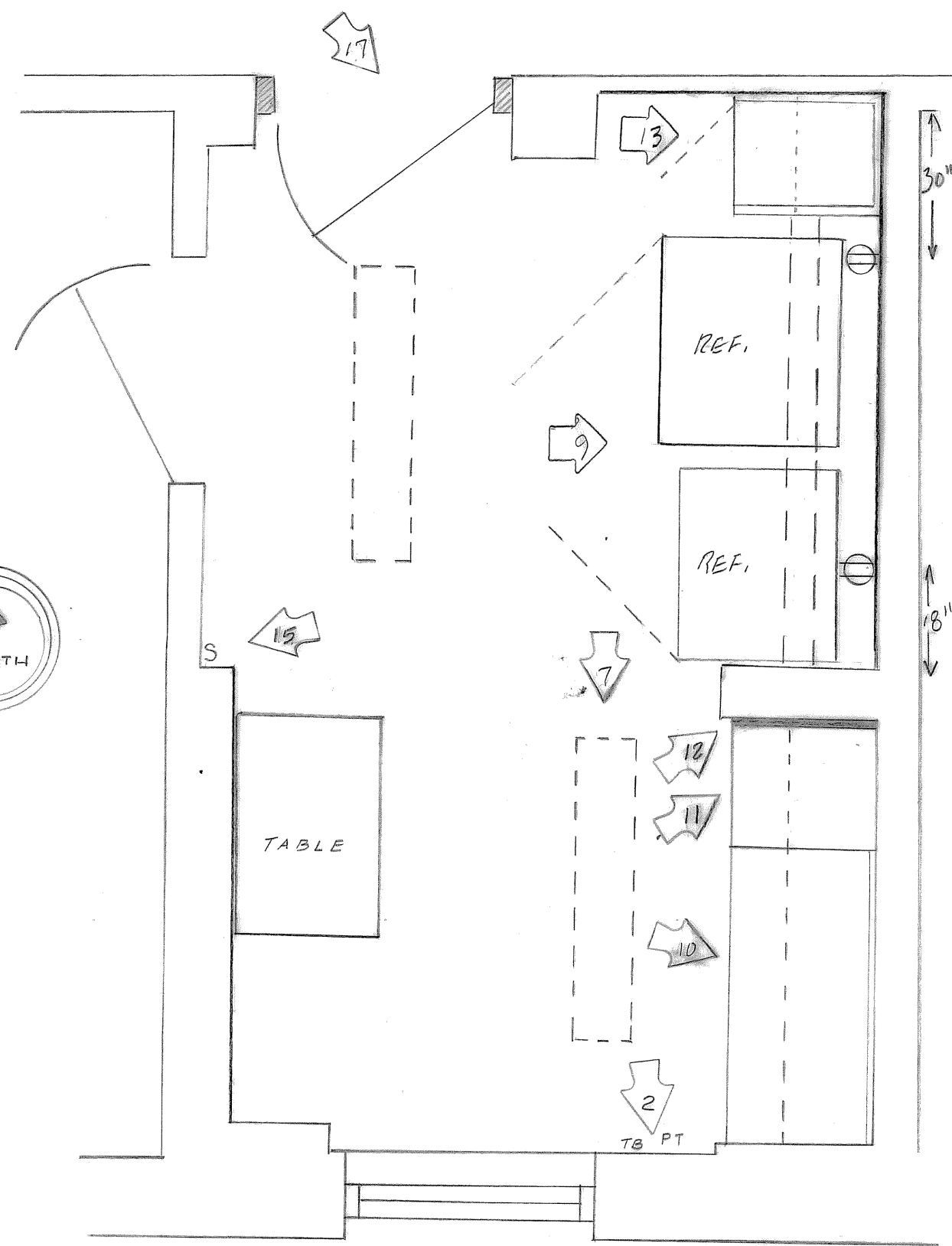
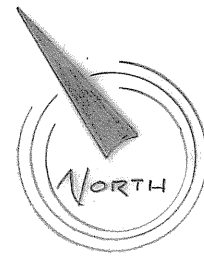


FIRST FLOOR PLAN

REVISIONS			BLDG. #26		
NO.	DATE	BY			
1					
2					
3			DRAWN BY	SCALE 1/8" = 1'	MATERIAL
4			CHK'D	DATE	DRAWING NO.
5			TRACED	APP'D	



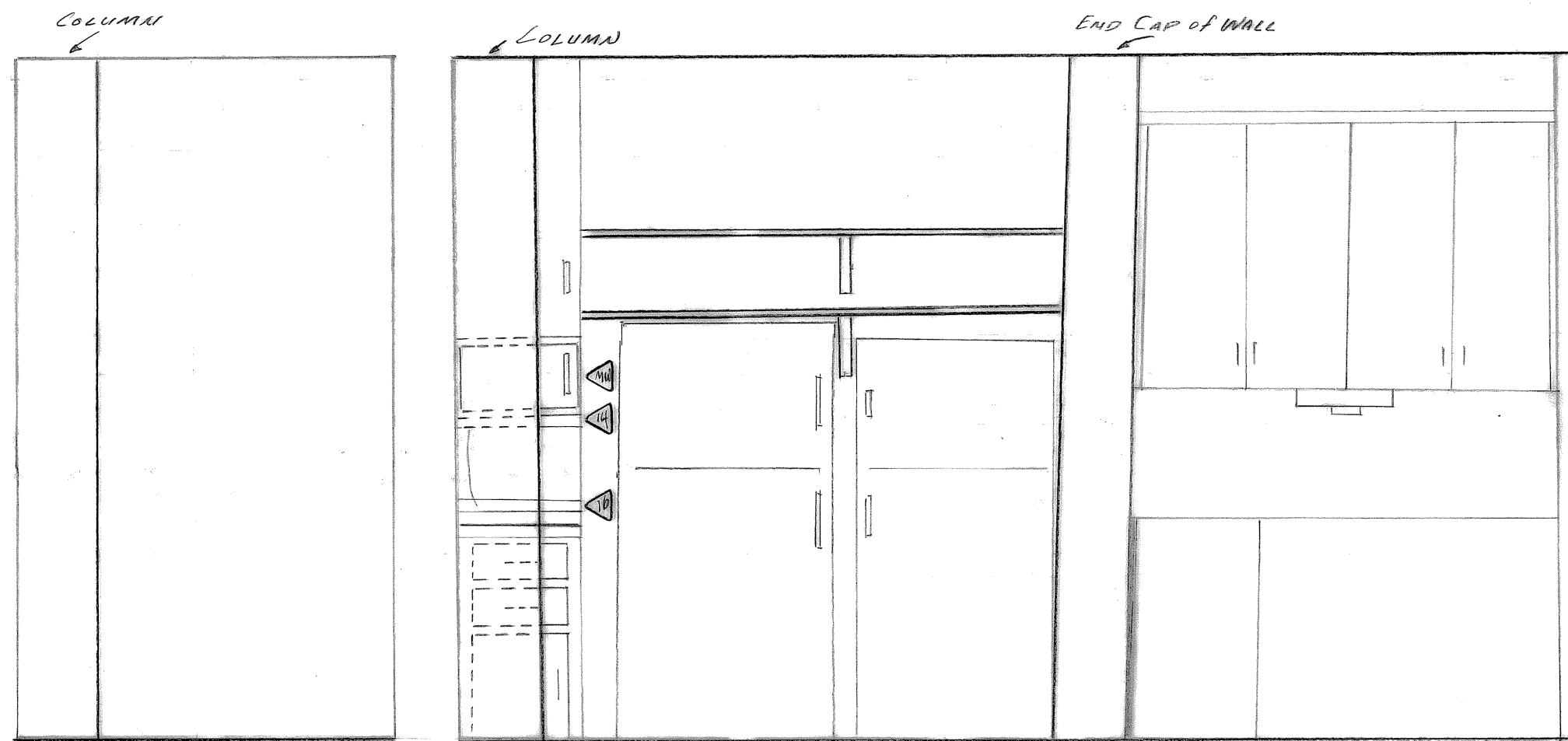
EXISTING
(DEMOLITION)



PROPOSED
(CONSTRUCTION)

NOTES:

1. REMOVE AND DISPOSE OF CEILING LAMPS AND SWITCHES.
2. RELOCATE PAPER TOWEL DISPENSER AND TOWEL BAR WHERE SHOWN.
3. REMOVE WALL SECTIONS, DOORS, AND FRAMES WITHIN SHADED AREAS.
4. REMOVE AND DISPOSE OF EXISTING KITCHENETTE UNIT (WALL CABINETS STAY).
5. RELOCATE ELECTRICAL OUTLETS AS SHOWN ON DRAWINGS.
6. REMOVE 22" FROM LEFT SIDE OF SHELVES AND REBRACE CENTER AT 36" FROM RIGHT.
BRACE SHELF SIDES (DO NOT ATTACH TO MICROWAVE CABINET UNIT).
REMOVE AND DISPOSE OF COAT HOOKS BELOW SHELVES.
7. INSTALL NEW FLUORESCENT LIGHT FIXTURE TO MATCH EXISTING TYPE.
8. REMOVE AND DISCARD ALL LINOLEUM; RECOVER WITH NEW MATERIAL.
9. REPLACE AND CONNECT TWO REFRIGERATORS IN CONFIGURATION SHOWN.
10. INSTALL NEW 48" SINK CABINET UNIT; CONNECT TO EXISTING LINES.
11. RELOCATE AND CONNECT ELECTRIC RANGE (20"). (NEW)
12. FABRICATE / INSTALL FILLER TRIM BETWEEN RANGE AND WALL.
13. CABINET CO. TO INSTALL CUSTOM BASE AND WALL CABINETS, 22" WIDTH, AS SHOWN ON DRAWINGS. LOWER SECTION OF WALL CABINET TO BE OPEN, HOLDS MICROWAVE OVEN (19 1/2" x 12" x 11" H.). PROVIDE PLUG OUTLET OPENING AT RIGHT REAR OF SECTION. (PROVIDED BY REPPER'S)
14. INSTALL 18" TUBE LAMP UNDER MICROWAVE AREA.
15. INSTALL NEW SWITCH FOR CEILING LIGHT.
16. INSTALL MULTI-PLUG STRIP ABOVE MICROWAVE AREA COUNTER.
17. INSTALL NEW 2-HOUR RATED WALL WITH 3/4-HOUR RATED DOOR.

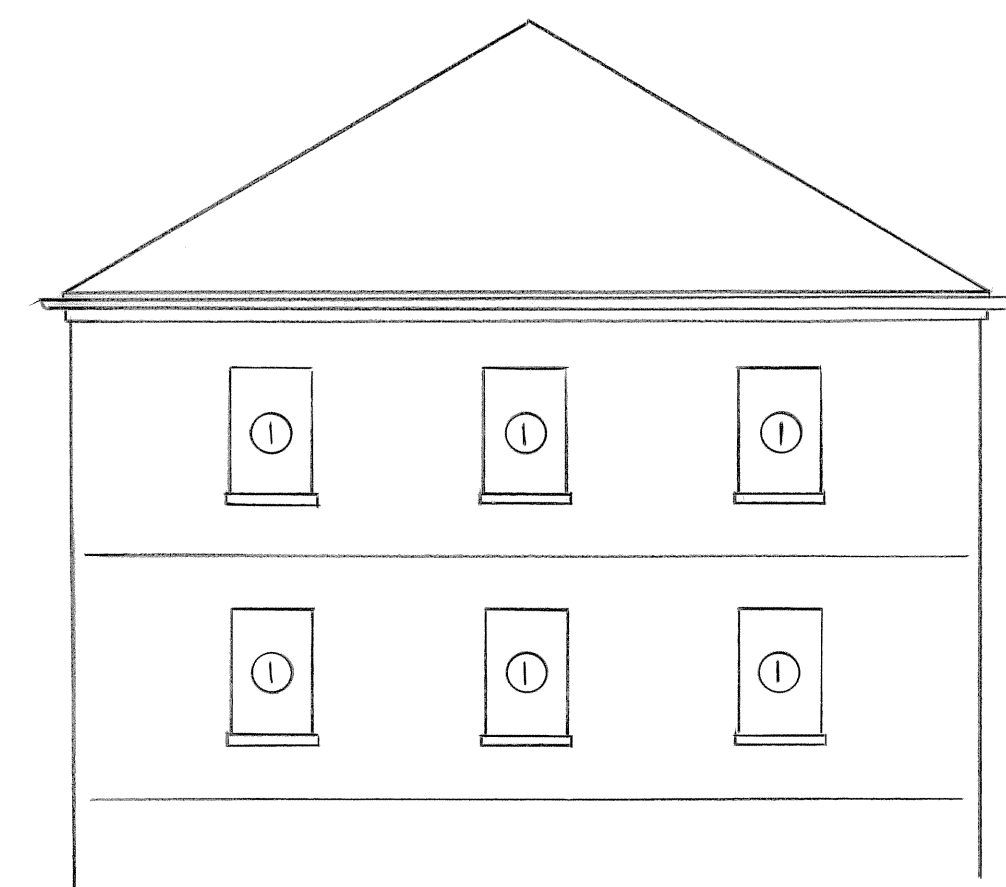


NORTH VIEW

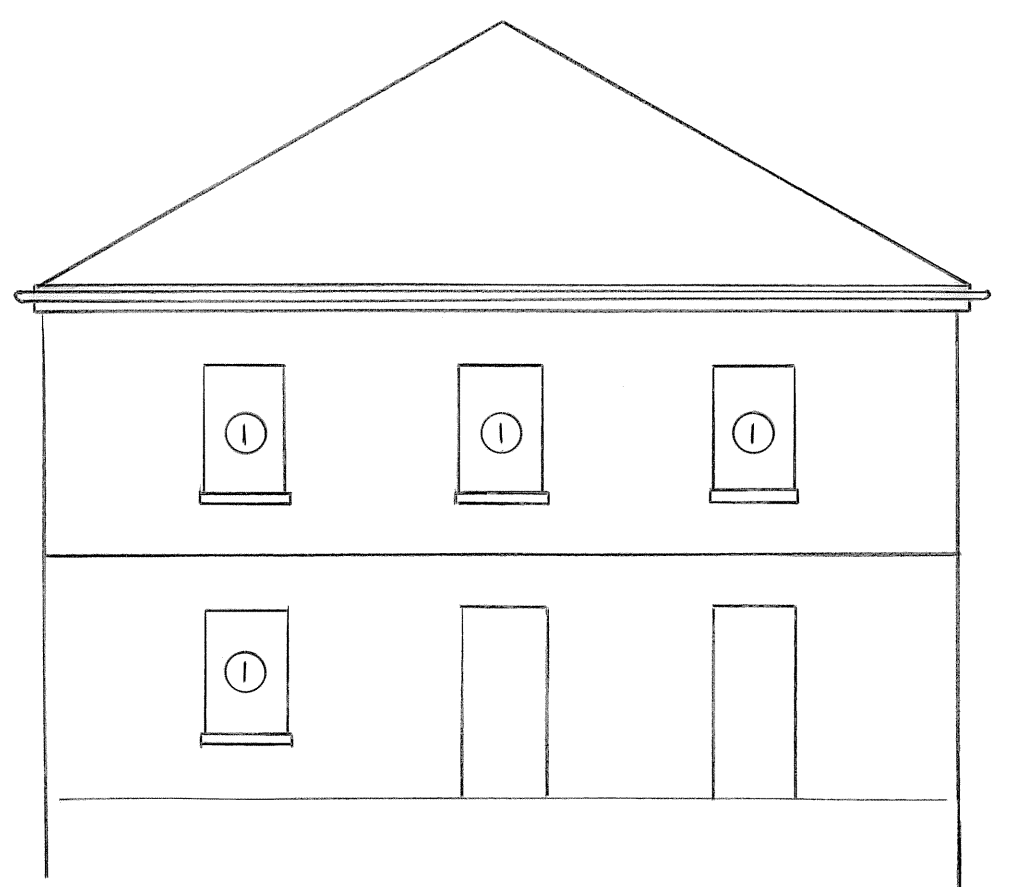
FINISHED ELEVATION

EAST VIEW

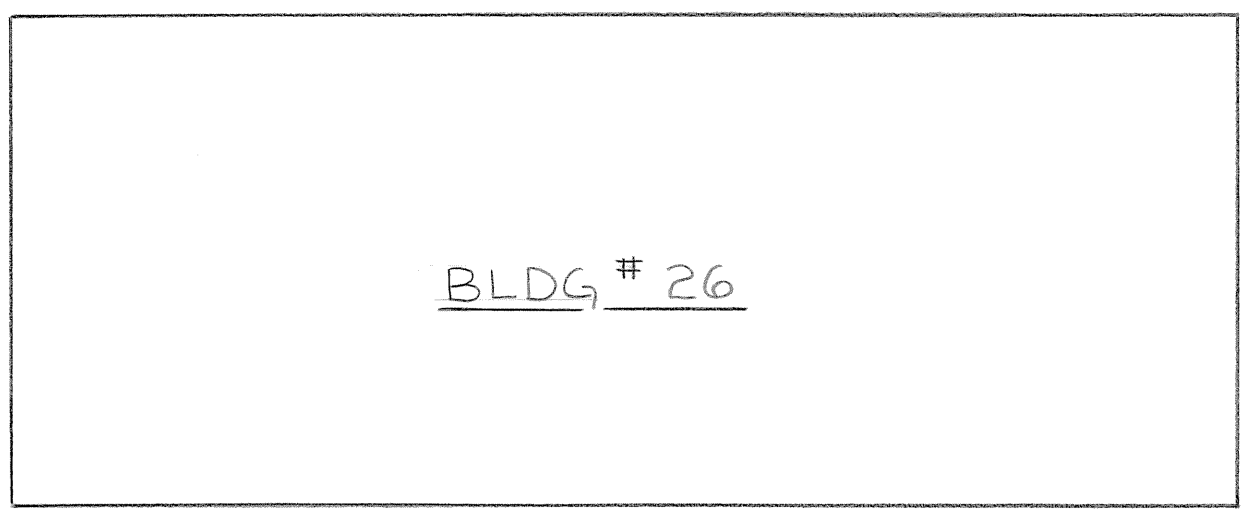
SCALE	1/2" = 1'-0"	REVISIONS	BY	DATE
DATE	8-1-91	Δ (WALL, CONCEAL, REF/MW AREA)	UR	1-9-92
DRN	VR	CKD		
APP'D	OL			
TITLE	RENOVATE B-26 KITCHEN		NO.	2-1 (1 of 1)



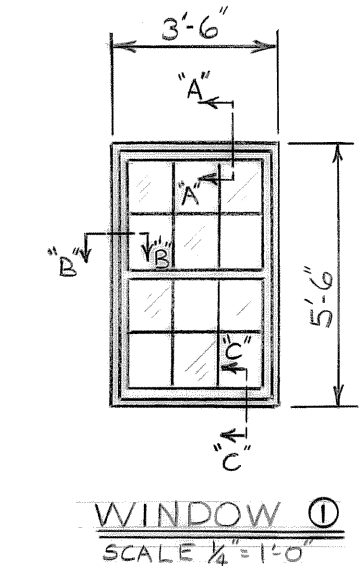
END (S.E.) ELEVATION
SCALE 1/8" = 1'-0"



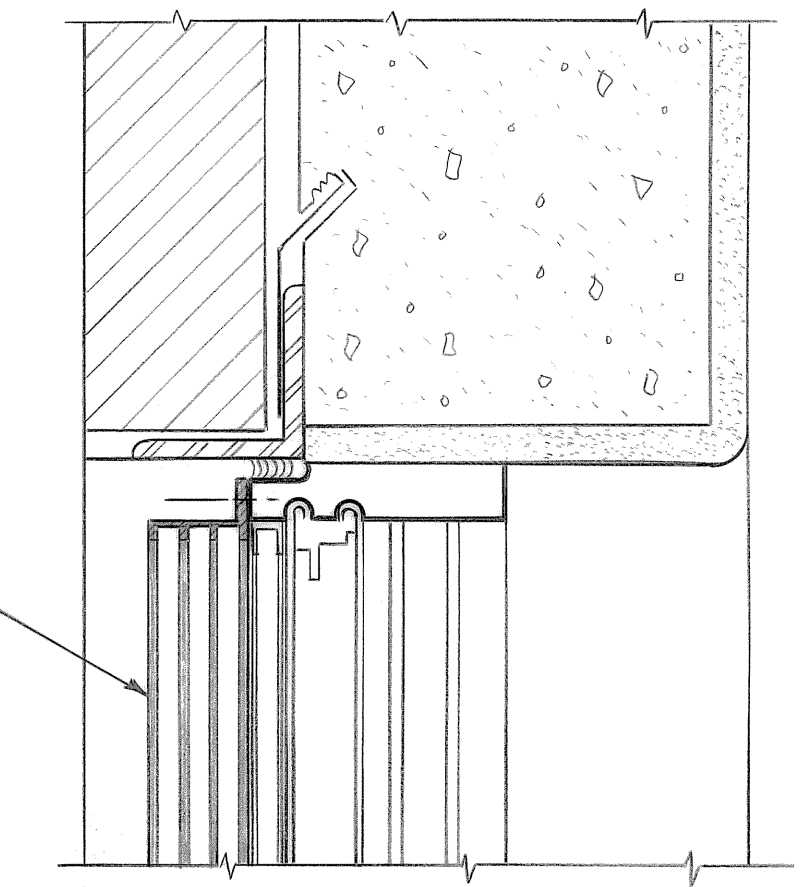
END (N.W.) ELEVATION
SCALE 1/8" = 1'-0"



KEY PLAN
NO SCALE

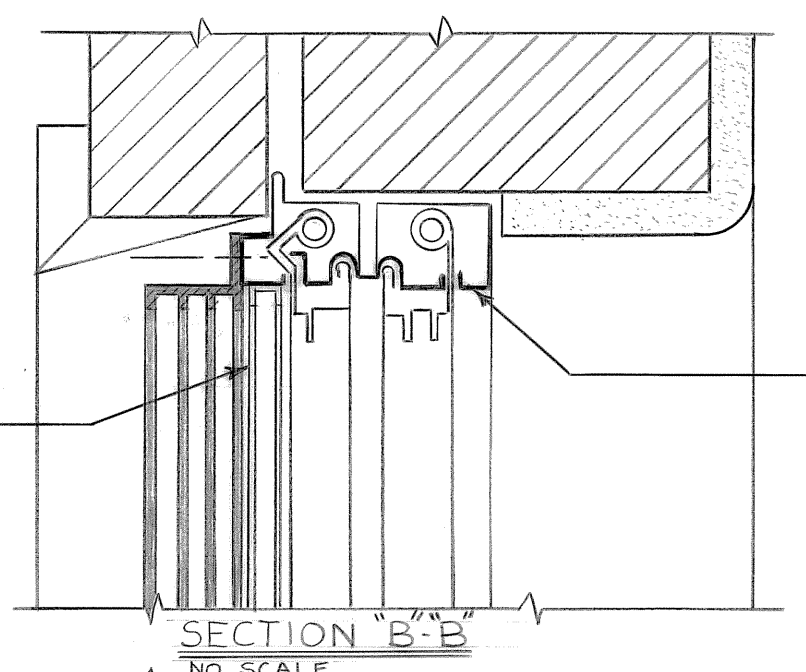


WINDOW
SCALE 1/4" = 1'-0"



SECTION A-A
NO SCALE

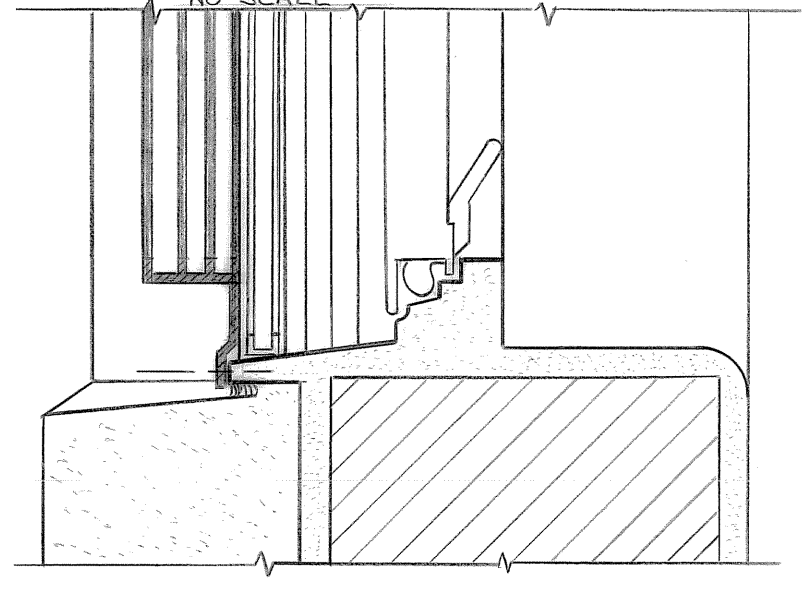
NEW TRIPLE TRACK
STORM WINDOW (TYP.)



SECTION B-B
NO SCALE

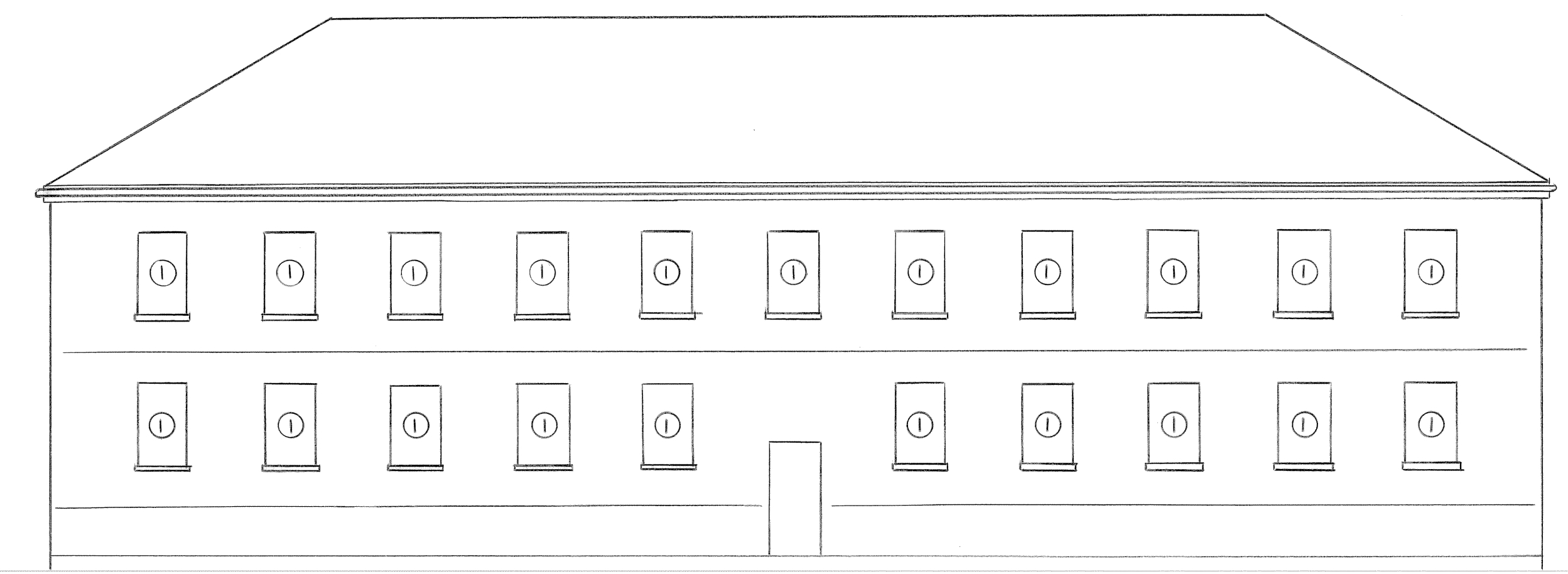
REMOVE EXISTING
SCREEN AND SCREEN
TRACK (TYP.)

EXISTING STEEL
DOUBLE-HUNG SASH
AND FRAME TO
REMAIN. (TYP.)

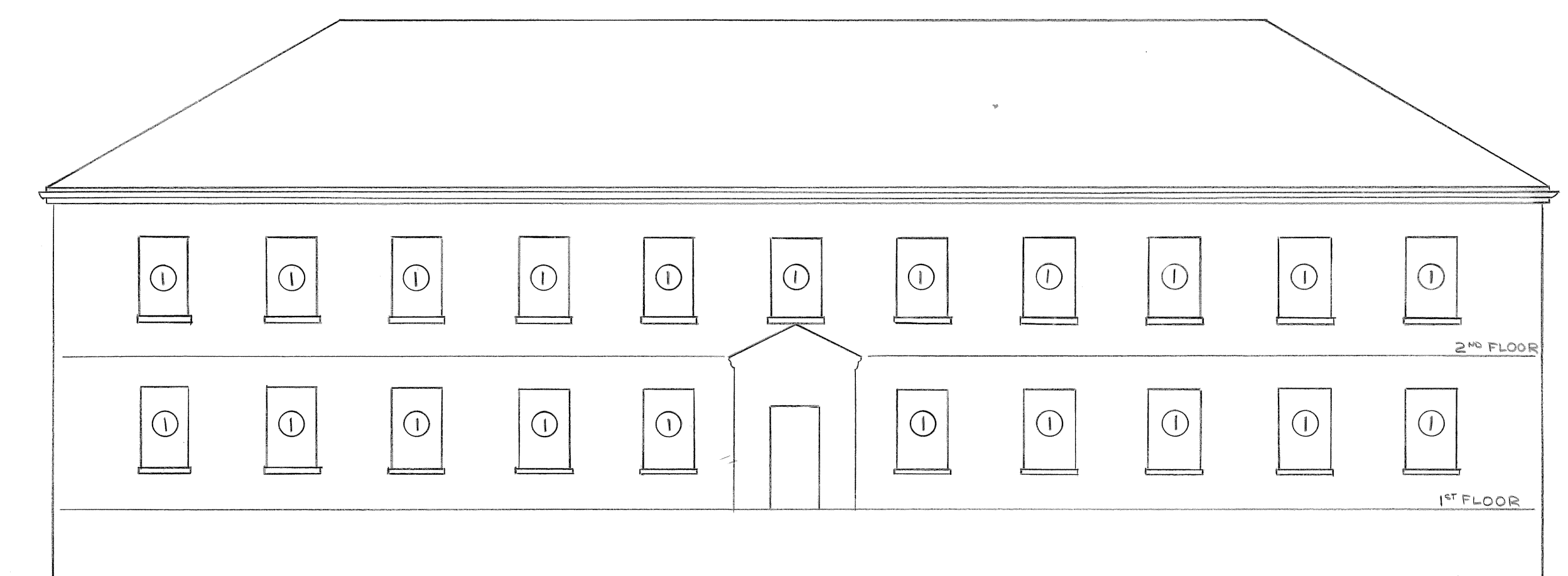


SECTION C-C
NO SCALE

TYP. WINDOW DETAIL BLDG. 26



REAR (N.E.) ELEVATION
SCALE 1/8" = 1'-0"



FRONT (S.W.) ELEVATION
SCALE 1/8" = 1'-0"

NOTES

1. CONTRACTOR IS TO SUPPLY ALL MATERIALS, LABOR, AND EQUIPMENT NECESSARY TO COMPLETE THE PROJECT AS SHOWN.
2. THE CONTRACTOR IS TO REMOVE THE EXISTING SCREEN AND SCREEN TRACK AND IS TO INSTALL NEW TRIPLE TRACK STORM WINDOWS ON ALL WINDOWS SHOWN. SCREENS ARE TO BECOME THE PROPERTY OF THE CONTRACTOR.
3. THERE ARE 52 WINDOWS THAT ARE TO HAVE TRIPLE TRACK STORM WINDOWS INSTALLED.
4. ON THE SECOND FLOOR WINDOWS, THE CONTRACTOR IS TO REMOVE THE EXISTING WINDOW CLEANER BOLTS BEFORE THE NEW STORM WINDOWS ARE INSTALLED.

NO.	DATE	DESCRIPTION
REVISIONS		
SHEET TITLE ELEVATIONS AND DETAILS		
BLDG. NO. 26	PROJECT TITLE NEW STORM WINDOWS	
DRAWN G.E. RUHL	CHECKED	DATE 7/10/81
APPROVED: DIVISION CHIEF		DRAWING NUMBER 26-1L
APPROVED: SERVICE DIRECTOR		DWG. 1 OF 1 PROJECT NUMBER
VETERANS ADMINISTRATION MEDICAL CENTER		
LOCATION LEBANON PA.		

