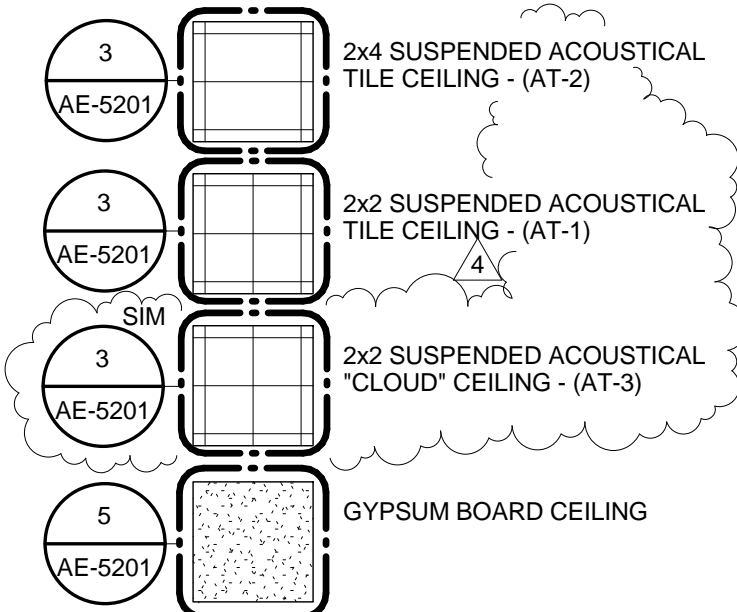


GENERAL NOTES - CEILING PLANS

- 1 ALL CEILING GRIDS TO BE CENTERED IN ROOMS - TYPICAL UNLESS NOTED OR DIMENSIONED OTHERWISE
- 2 ALL CEILING SYSTEMS MUST MEET A CLASS 1 FLAME SPREAD RATING
- 3 ALL EXIT STAIRS, MECHANICAL ROOMS, ELECTRICAL ROOMS, DATA CLOSETS AND JANITOR ROOMS ARE TO BE OPEN TO STRUCTURE ABOVE - TYPICAL UNLESS NOTED OR SHOWN OTHERWISE - REFER TO REFLECTED CEILING PLANS FOR ADDITIONAL ROOMS OPEN TO STRUCTURE
- 4 ALL EXPOSED DUCTWORK, PIPES, CONDUIT AND STRUCTURE SHALL BE CLEAN AND FREE OF ANY MANUFACTURER OR CONSTRUCTION DEFECTS
- 5 ALL SPRINKLER HEADS IN GYPSUM BOARD CEILINGS ARE TO BE CENTERED IN ROOMS OR SPACES
- 6 ALL SPRINKLER HEADS IN TILE CEILINGS TO BE CENTERED WITHIN TILE
- 7 COMPLETELY FILL VOIDS AROUND ALL CEILING PENETRATIONS WITH SOUND BATT INSULATION AND ACOUSTICAL SEALANT TO AVOID SOUND TRANSFER
- 8 CONTRACTOR SHALL COORDINATE THE LOCATIONS OF ALL CEILING ACCESS PANELS PRIOR TO INSTALLATION - LOCATIONS REQUIRE APPROVAL FROM ARCHITECT OF RECORD
- 9 CONTRACTOR TO COORDINATE SIZE AND LOCATIONS REQUIRE FOR ACCESS PANELS AT ALL VAV BOXES, PIPING CONTROL VALVES, SWITCHES, ETC. WITH ALL APPROPRIATE TRACES INCLUDING, BUT NOT LIMITED TO FINISH CEILING, LIGHTING AND FURNITURE
- 10 DOWNLIGHTS AND DECORATIVE LIGHT FIXTURES PLACED IN TILE CEILINGS SHALL BE LOCATED IN THE CENTER OF THE TILE - TYPICAL UNLESS NOTED OR DIMENSIONED OTHERWISE
- 11 LIGHT FIXTURES RECESSED IN GYPSUM BOARD CEILINGS SHALL BE CENTERED IN ROOMS - TYPICAL UNLESS NOTED OTHERWISE
- 12 REFER TO ELECTRICAL DRAWINGS FOR POWER AND LIGHTING INFORMATION
- 13 REFER TO LOW VOLTAGE DRAWINGS FOR CEILING MOUNTED TV, SPEAKERS, SECURITY AND VIDEO CAMERA INFORMATION
- 14 REFER TO MECHANICAL DRAWINGS FOR VENTILATION AND HEATING VENTILATION AND AIR CONDITIONING INFORMATION - ALL HEATING VENTILATION AND AIR CONDITIONING REGISTERS TO MATCH CEILING COLORS - TYPICAL UNLESS NOTED OTHERWISE
- 15 REFER TO SHEET AE-1301A FOR TYPICAL DETAIL CALL-OUTS
- 16 REFER TO SPECIFICATION SECTION 13 05 41 SEISMIC RESTRAINT REQUIREMENTS FOR NON-STRUCTURAL COMPONENTS, FOR ABOVE CEILING BRACING OF MECHANICAL, ELECTRICAL, PLUMBING, FIRE SUPPRESSION AND EQUIPMENT COMPONENTS.
- 17 SOFFITS ENCLOSING MECHANICAL DUCT WORK OR PLUMBING PIPES SHALL BE HELD TIGHT TO UNDERSIDE OF DUCTWORK AND PIPING - TYPICAL UNLESS NOTED OTHERWISE
- 18 THE SUSPENDED CEILING SYSTEM, MECHANICAL DUCTWORK AND LIGHTING FIXTURES SHALL BE POSITIVELY ATTACHED TO THE STRUCTURE ABOVE
- 19 REFER TO AF SERIES FOR WINDOW SHADE LOCATIONS

CEILING LEGEND



SPECIALTY WOOD CEILING TO MATCH HOSPITAL CONCEALED (WPC-1)

LIGHT FIXTURE (2x4)

LIGHT FIXTURE (2x2)

LINEAR LIGHT FIXTURE

SUSPENDED LIGHT FIXTURE

LIGHT FIXTURE

SUPPLY AIR DIFFUSER

RETURN AIR DIFFUSER

EXHAUST DIFFUSER

TUBULAR LIGHTING DEVICE

CEILING MOUNTED EXIT SIGNS

WALL MOUNTED EXIT SIGN

WALL MOUNTED LIGHT FIXTURE

PENDANT LIGHT

DOWNLIGHT FIXTURE

ACCESS PANEL

ENTIRE SHEET MODIFIED

WALL FIRE RATING LEGEND

1 HOUR RATED PARTITION

2 HOUR RATED PARTITION

ACOUSTICALLY RATED PARTITION

AREA OF SLOPED CEILING

CONSTRUCTION DOCUMENTS

BUILDING IS FULLY SPRINKLERED

B1 REFLECTED CEILING PLAN - LEVEL 1 - AREA A - EDUCATION CENTER

1/8" = 1'-0"

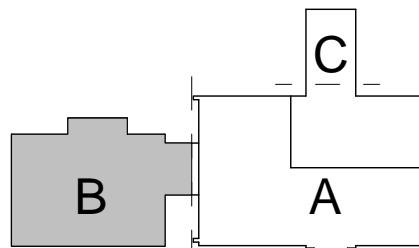
1	Addendum #01	08/15/2012
2	Addendum #02	08/22/2012
3	Amendment #06	09/27/2012
4	Amendment #07	10/26/2012

Revisions: Date:

CONSULTANTS:

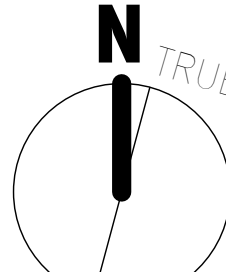
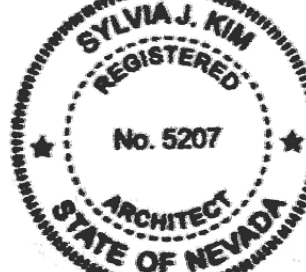
CIVIL: SLATER HANIFAN GROUP, 5740 S. ARVILLE ST. #216, LAS VEGAS, NV 89118
LANDSCAPE: JWA ZUNINO LANDSCAPE ARCHITECTURE, 3191 S. JONES BLVD., LAS VEGAS, NV 89118
MEP: JBA CONSULTING ENGINEERING, 5155 WEST PATRICK LANE, LAS VEGAS, NV 89118
STRUCTURAL: DEGENKOLB ENGINEERING, 235 MONTGOMERY STREET, SUITE 500, SAN FRANCISCO CA 94104
GEOTECHNICAL: NINYO AND MOORE, 6700 PARADISE ROAD, SUITE E, LAS VEGAS, NV 89119
FIRE & LIFE SAFETY: LASALLE ENGINEERING, 1000 YORK ROAD, WILLOW GROVE, PA 19090

KEY PLAN



ARCHITECT/ENGINEERS:

RTKL
JMA ARCHITECTURE STUDIOS
A Joint Venture



Drawing Title
Reflected Ceiling Plan - Level 1 - Area B - Education Center
Scale
1/8" = 1'-0"

Approved: Project Director

Milan Arakic

Project Title
VA Medical Center - PHASE V,
Administration Bldg. & Education Ctr.
Addition

Location
North Las Vegas, NV

Date
June 15, 2012

Checked
RE

Drawn
Author

Project Number
593CA2202

Building Number
6

Drawing Number
AE-1301B

123 of 512

Office of
Construction
and
Facilities
Management

Department of
Veterans Affairs