

GENERAL NOTES - CEILING PLANS

- 1 ALL CEILING GRIDS TO BE CENTERED IN ROOMS - TYPICAL UNLESS NOTED OR DIMENSIONED OTHERWISE
- 2 ALL CEILING SYSTEMS MUST MEET A CLASS 1 FLAME SPREAD RATING
- 3 ALL EXIT STAIRS, MECHANICAL ROOMS, ELECTRICAL ROOMS, DATA CLOSETS AND JANITOR ROOMS ARE TO BE OPEN TO STRUCTURE ABOVE - TYPICAL UNLESS NOTED OR SHOWN OTHERWISE - REFER TO REFLECTED CEILING PLANS FOR ADDITIONAL ROOMS OPEN TO STRUCTURE
- 4 ALL EXPOSED DUCTWORK, PIPES, CONDUIT AND STRUCTURE SHALL BE CLEAN AND FREE OF ANY MANUFACTURER OR CONSTRUCTION DEFECTS
- 5 ALL SPRINKLER HEADS IN GYPSUM BOARD CEILINGS ARE TO BE CENTERED IN ROOMS OR SPACES
- 6 COMPLETELY FILL VOIDS AROUND ALL CEILING PENETRATIONS WITH SOUND BATT INSULATION AND ACOUSTICAL SEALANT TO AVOID SOUND TRANSFER
- 7 CONTRACTOR SHALL COORDINATE THE LOCATIONS OF ALL CEILING ACCESS PANELS PRIOR TO INSTALLATION - LOCATIONS REQUIRE APPROVAL FROM ARCHITECT OF RECORD
- 8 CONTRACTOR TO COORDINATE SIZE AND LOCATIONS REQUIRE FOR ACCESS PANELS AT ALL VAV BOXES, PIPING CONTROL VALVES, SWITCHES, ETC. WITH ALL APPROPRIATE TRACES INCLUDING, BUT NOT LIMITED TO FINISH CEILING, LIGHTING AND FURNITURE
- 9 DOWNLIGHTS AND DECORATIVE LIGHT FIXTURES PLACED IN TILE CEILINGS SHALL BE LOCATED IN THE CENTER OF THE TILE - TYPICAL UNLESS NOTED OR DIMENSIONED OTHERWISE
- 10 LIGHT FIXTURES RECESSED IN GYPSUM BOARD CEILINGS SHALL BE CENTERED IN ROOMS - TYPICAL UNLESS NOTED OTHERWISE
- 11 REFER TO ELECTRICAL DRAWINGS FOR POWER AND LIGHTING INFORMATION
- 12 REFER TO LOW VOLTAGE DRAWINGS FOR CEILING MOUNTED TV, SPEAKERS, SECURITY AND VIDEO CAMERA INFORMATION
- 13 REFER TO MECHANICAL DRAWINGS FOR VENTILATION AND HEATING VENTILATION AND AIR CONDITIONING INFORMATION - ALL HEATING VENTILATION AND AIR CONDITIONING REGISTERS TO MATCH CEILING COLORS - TYPICAL UNLESS NOTED OTHERWISE
- 14 REFER TO SHEET AE-1301A FOR TYPICAL DETAIL CALL-OUTS
- 15 REFER TO SPECIFICATION SECTION 13.05.41 SEISMIC RESTRAINT REQUIREMENTS FOR NON-STRUCTURAL COMPONENTS, FOR ABOVE CEILING BRACING OF MECHANICAL, ELECTRICAL, PLUMBING, FIRE SUPPRESSION AND EQUIPMENT COMPONENTS.
- 16 SOFFITS ENCLOSING MECHANICAL DUCT WORK OR PLUMBING PIPES SHALL BE HELD TIGHT TO UNDERSIDE OF DUCTWORK AND PIPING - TYPICAL UNLESS NOTED OTHERWISE
- 17 THE SUSPENDED CEILING SYSTEM, MECHANICAL DUCTWORK AND LIGHTING FIXTURES SHALL BE POSITIVELY ATTACHED TO THE STRUCTURE ABOVE
- 18 REFER TO AF SERIES FOR WINDOW SHADE LOCATIONS

CEILING LEGEND

- 3 2x4 SUSPENDED ACOUSTICAL TILE CEILING - (AT-2)
- 3 2x2 SUSPENDED ACOUSTICAL TILE CEILING - (AT-1)
- 3 2x2 SUSPENDED ACOUSTICAL "CLOUD" CEILING - (AT-3)
- 5 GYPSUM BOARD CEILING
- SPECIALTY WOOD CEILING TO MATCH HOSPITAL - CONCEALED (WPC-1)

ENTIRE SHEET MODIFIED

WALL FIRE RATING LEGEND

- 1 HOUR RATED PARTITION
- 2 HOUR RATED PARTITION
- ACOUSTICALLY RATED PARTITION
- AREA OF SLOPED CEILING

- LIGHT FIXTURE (2x4)
- LIGHT FIXTURE (2x2)
- LINEAR LIGHT FIXTURE
- SUSPENDED LIGHT FIXTURE
- LIGHT FIXTURE
- SUPPLY AIR DIFFUSER
- RETURN AIR DIFFUSER
- EXHAUST DIFFUSER
- TUBULAR LIGHTING DEVICE
- CEILING MOUNTED EXIT SIGNS
- WALL MOUNTED EXIT SIGN
- WALL MOUNTED LIGHT FIXTURE
- PENDANT LIGHT
- DOWNLIGHT FIXTURE
- ACCESS PANEL

CONSTRUCTION DOCUMENTS  
BUILDING IS FULLY SPRINKLERED

Office of Construction and Facilities Management  
Department of Veterans Affairs

Project Title  
VA Medical Center - PHASE V, Administration Bldg. & Education Ctr. Addition

Project Number  
593CA2202

Building Number  
6

Drawing Number  
AE-1303A

127 of 512

Location  
North Las Vegas, NV

Date  
June 15, 2012

Checked  
RE

Drawn  
Author

Drawing Title  
Reflected Ceiling Plan - Level 3 - Area A - Administration

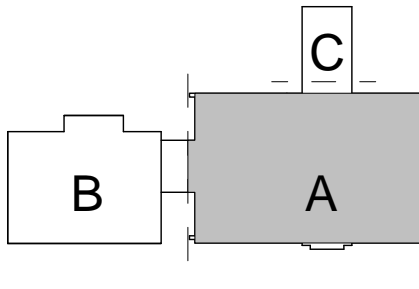
Scale  
1/8" = 1'-0"

Approved: Project Director  
Milan Arakic

ARCHITECT/ENGINEERS:

RTKL  
JMA ARCHITECTURE STUDIOS  
A Joint Venture

KEY PLAN



CONSULTANTS:

CIVIL:  
LANDSCAPE:  
MEP:  
STRUCTURAL:  
GEOTECHNICAL:  
FIRE & LIFE SAFETY:

SLATER HANIFAN GROUP, 5740 S. ARVILLE ST. #216, LAS VEGAS, NV 89118  
JW ZUNINO LANDSCAPE ARCHITECTURE, 3191 S. JONES BLVD., LAS VEGAS, NV 89118  
JBA CONSULTING ENGINEERING, 5155 WEST PATRICK LANE, LAS VEGAS, NV 89118  
DEGENKOLB ENGINEERING, 235 MONTGOMERY STREET, SUITE 500, SAN FRANCISCO CA 94104  
NINYO AND MOORE, 6700 PARADISE ROAD, SUITE E, LAS VEGAS, NV 89119  
LASALLE ENGINEERING, 1000 YORK ROAD, WILLOW GROVE, PA 19090

A3 REFLECTED CEILING PLAN - LEVEL 3 - AREA A - ADMINISTRATION

1/8" = 1'-0"

1	Addendum #01	08/15/2012
2	Addendum #02	08/22/2012
3	Amendment #06	09/27/2012
4	Amendment #07	10/26/2012
Revisions:		Date: