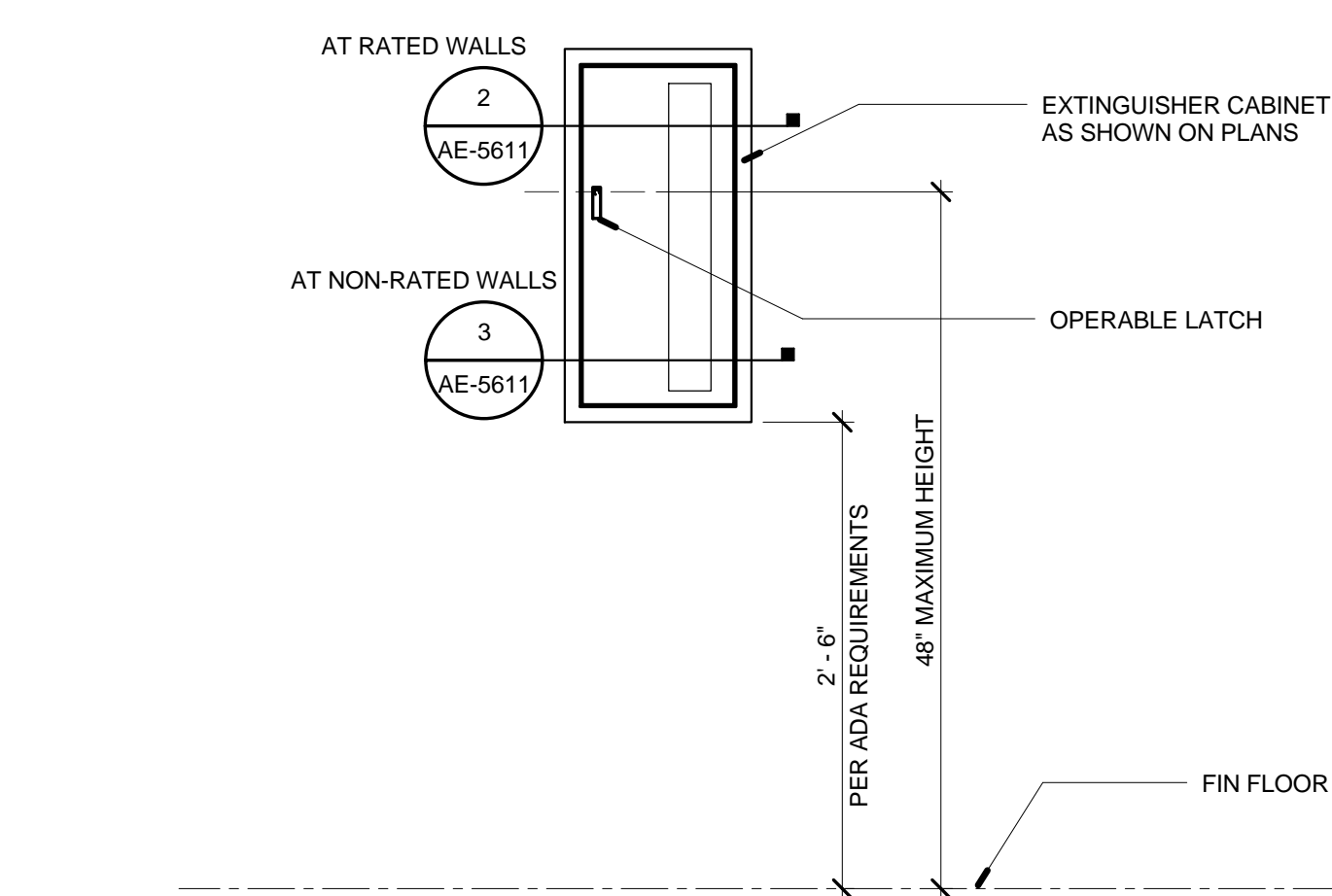
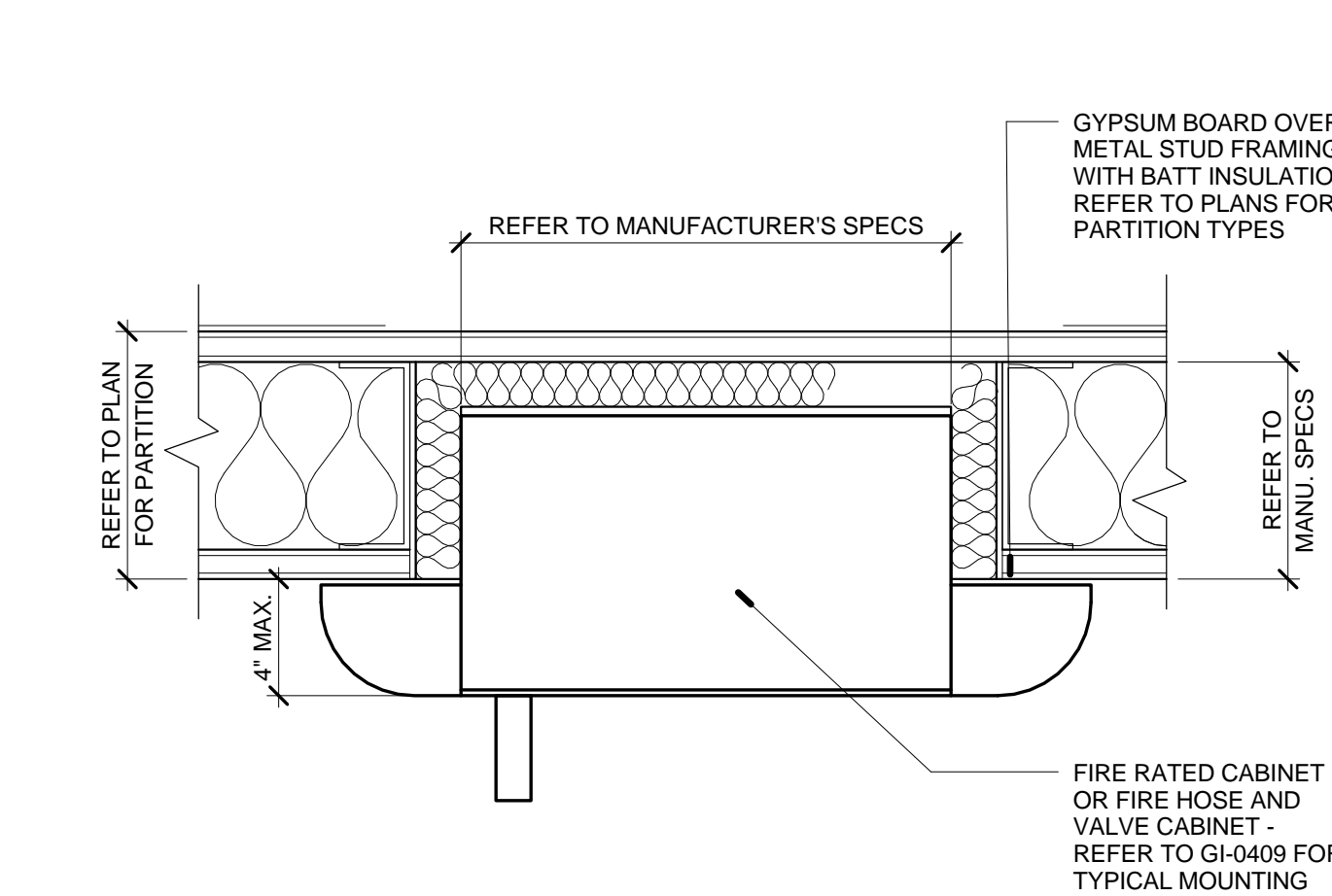


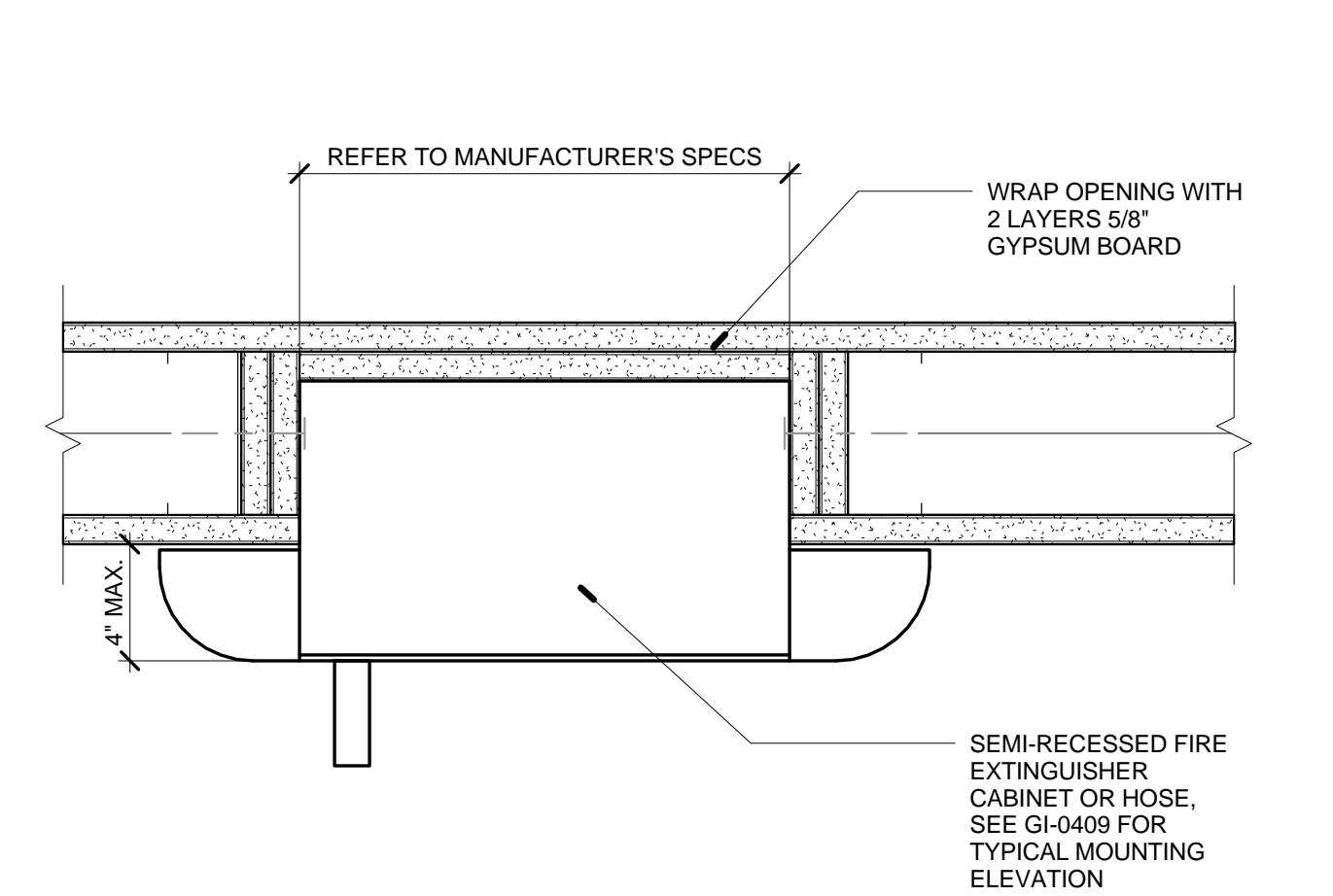
three inches = one foot
one and one half inches = one foot
one inch = one foot
three quarters inch = one foot
one half inch = one foot
three eighths inch = one foot
one quarter inch = one foot
one eighth inch = one foot
one sixteenth inch = one foot



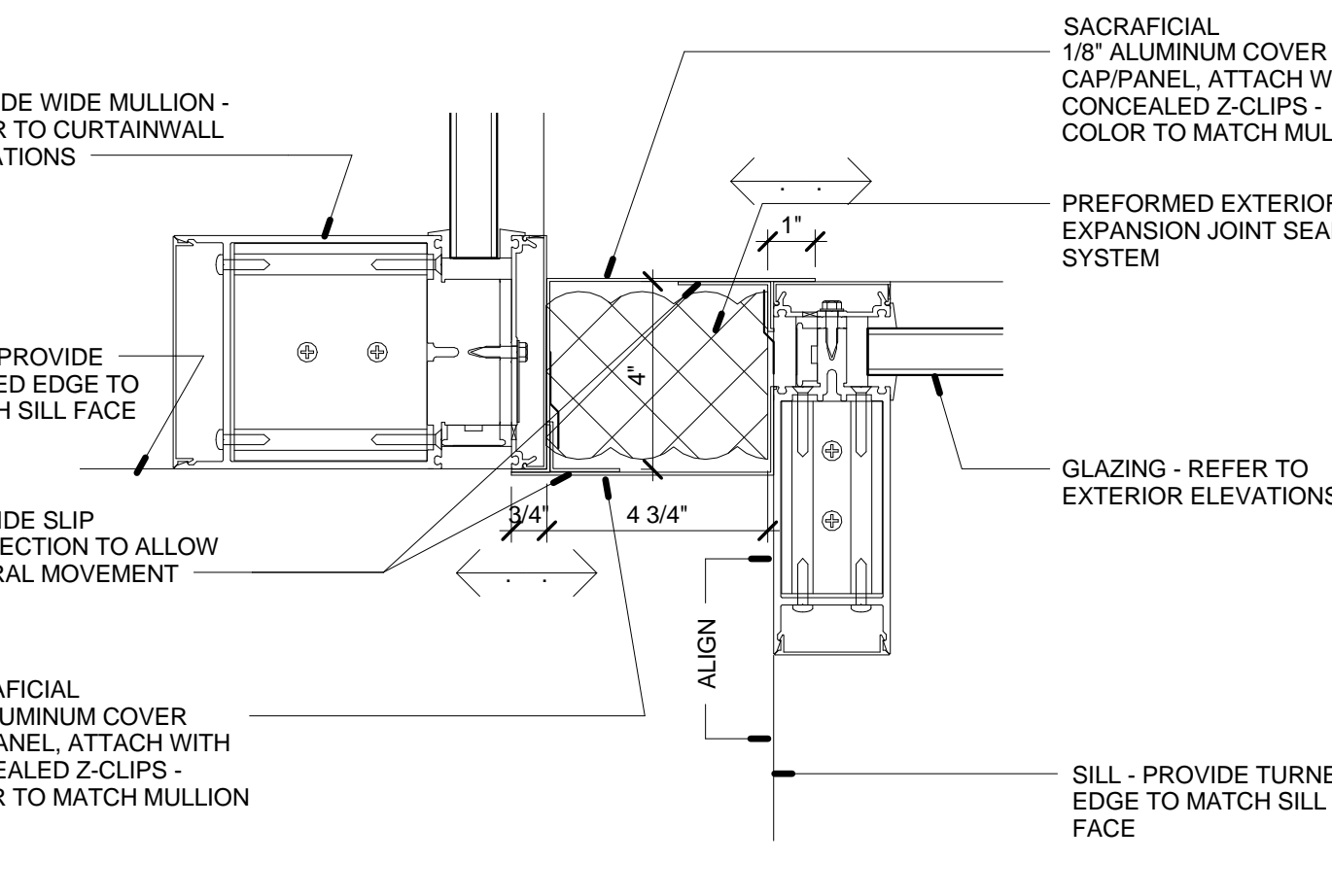
1 EXTINGUISHER CABINET ELEVATION
NOT TO SCALE



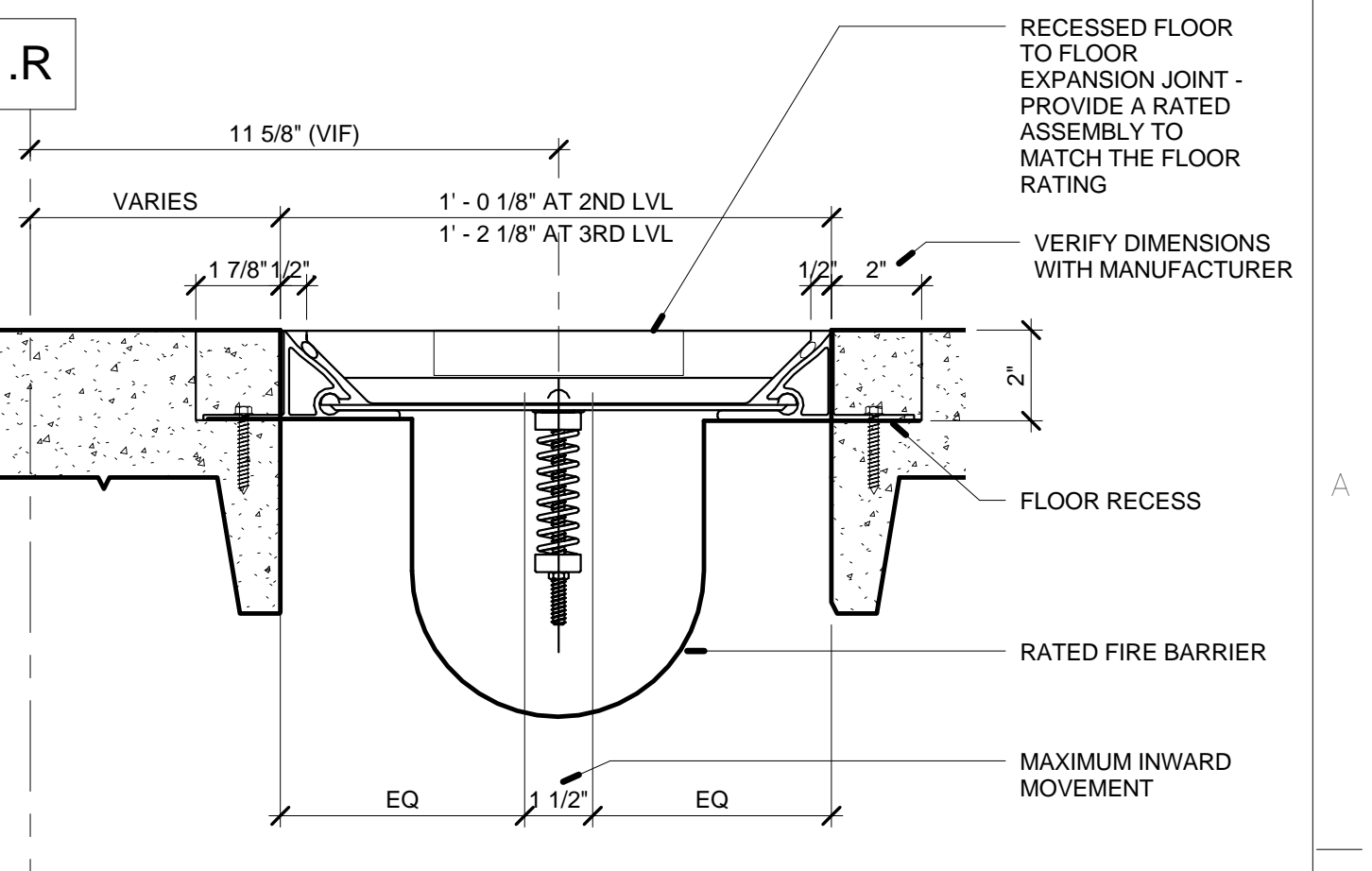
2 FEC - NON-RATED WALLS
NOT TO SCALE



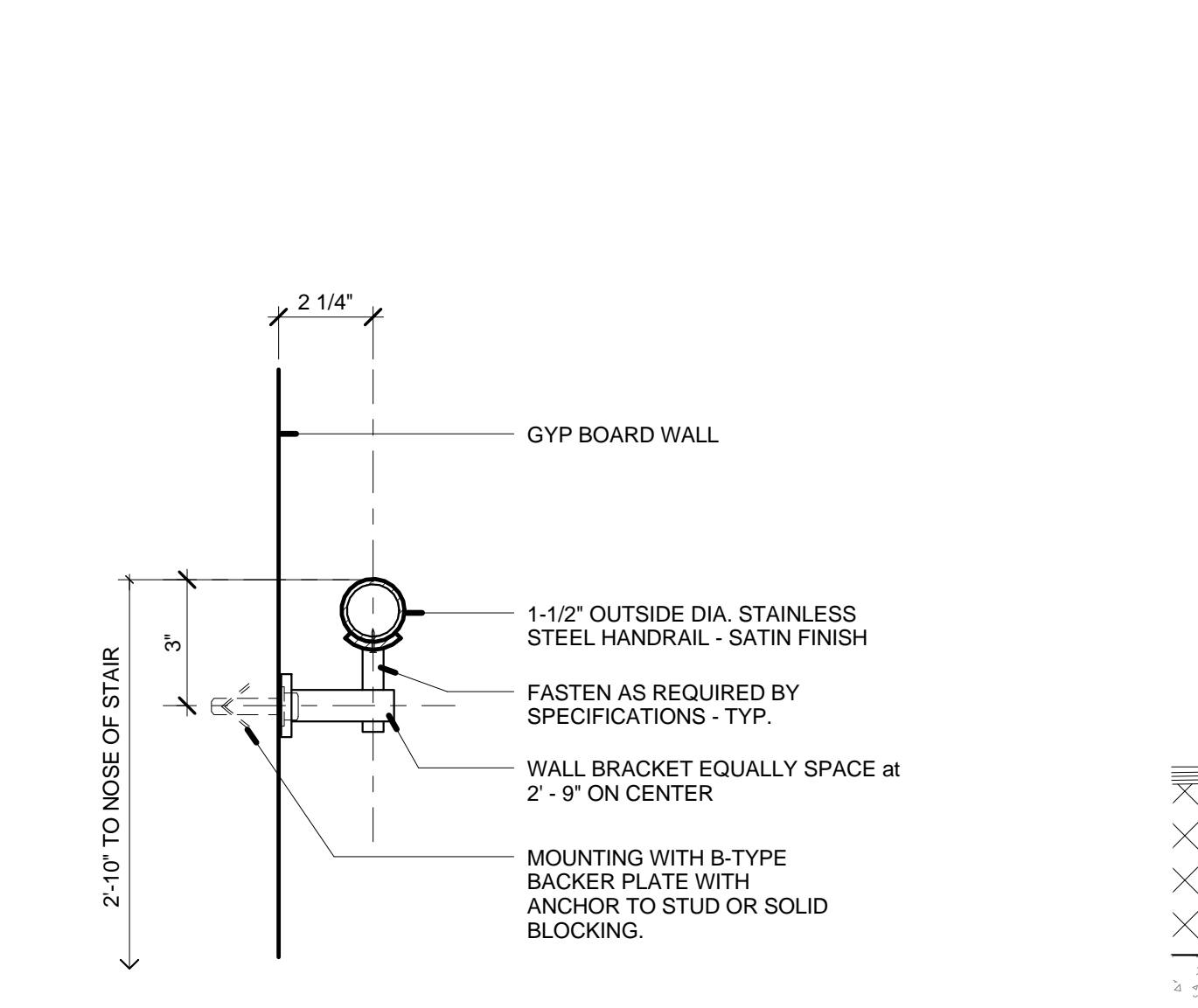
3 FEC - RATED WALLS
NOT TO SCALE



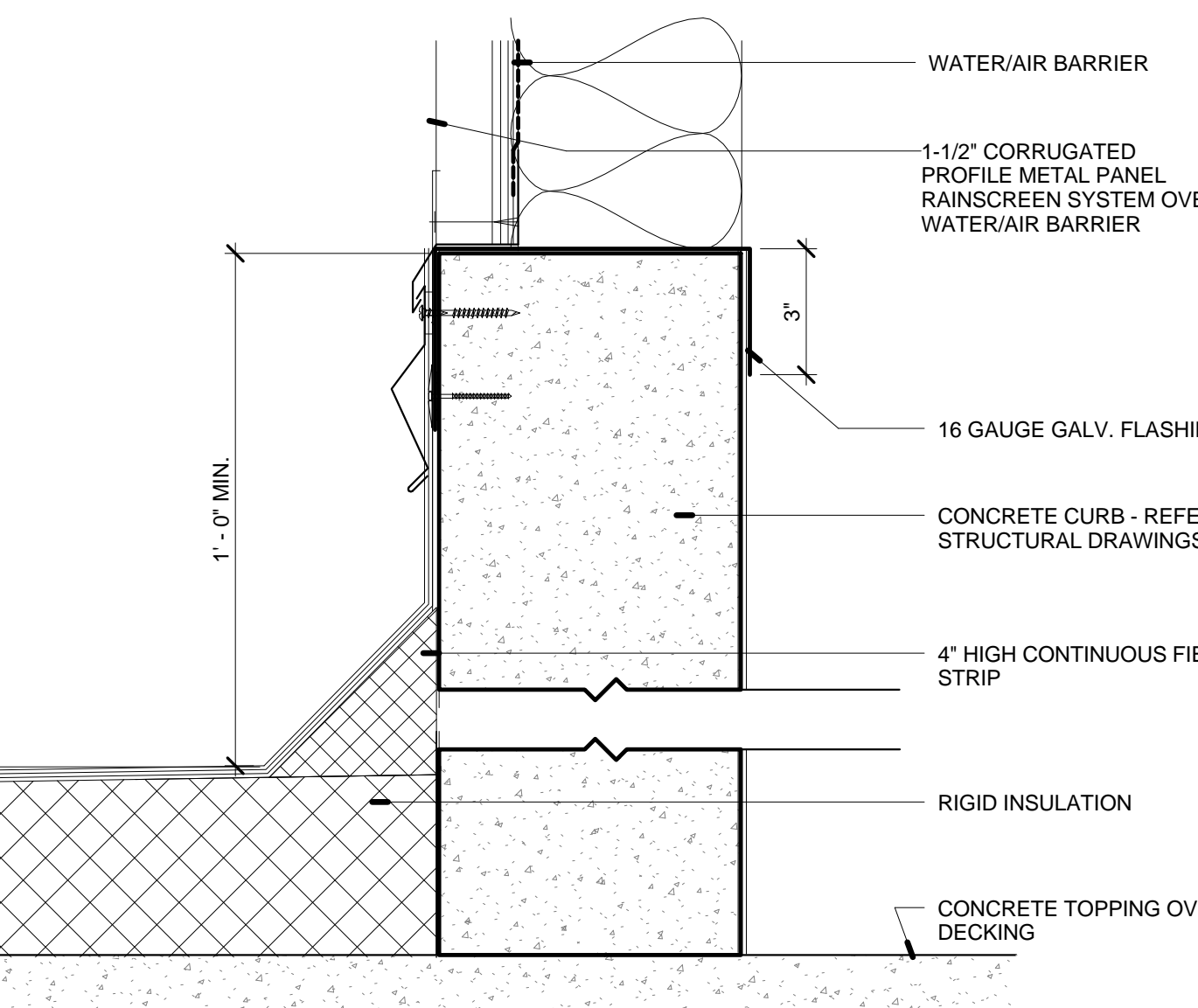
4 EXPANSION JOINT DETAIL
3\"/>



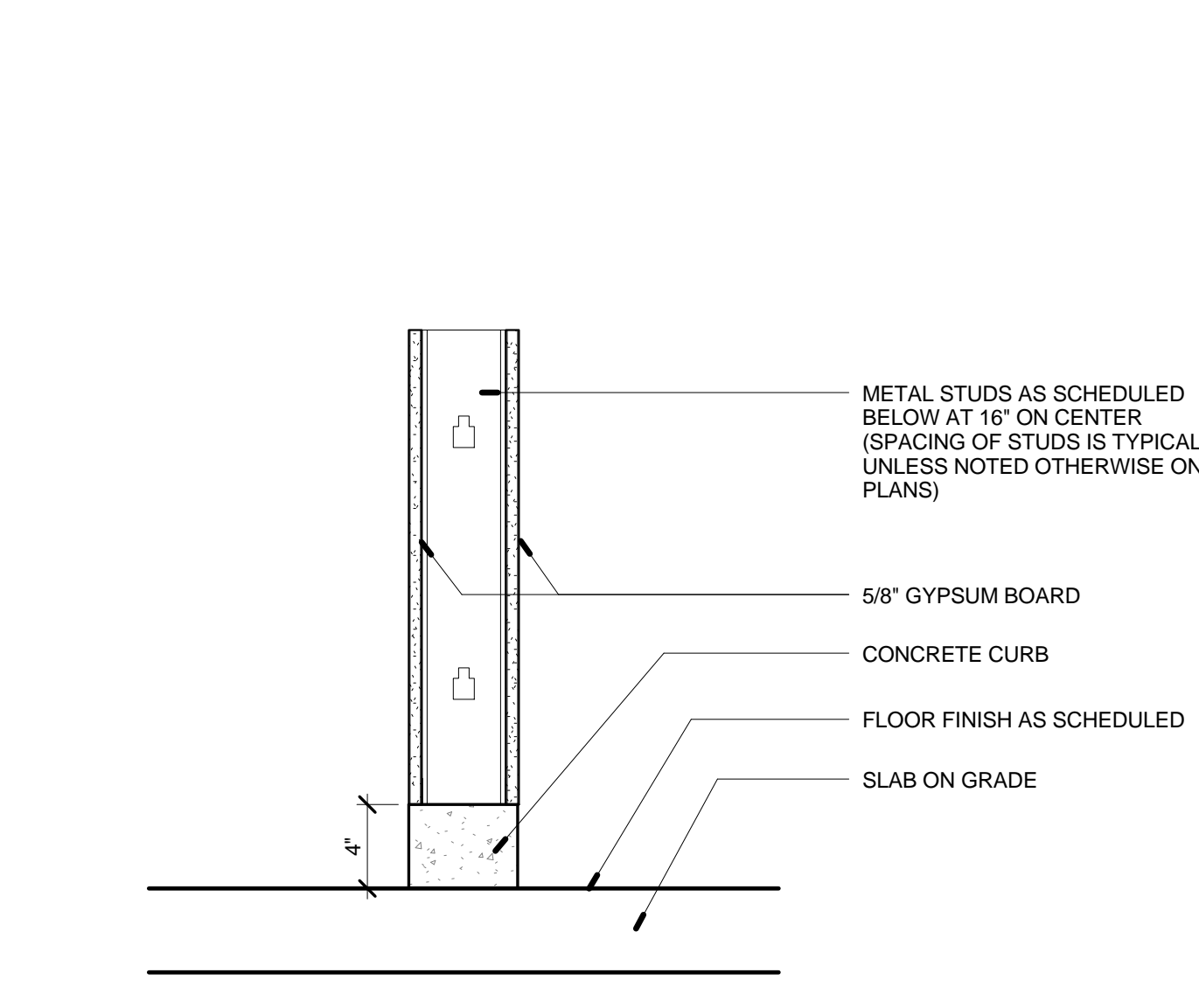
5 FLOOR EXPANSION JOINT DETAIL
3\"/>



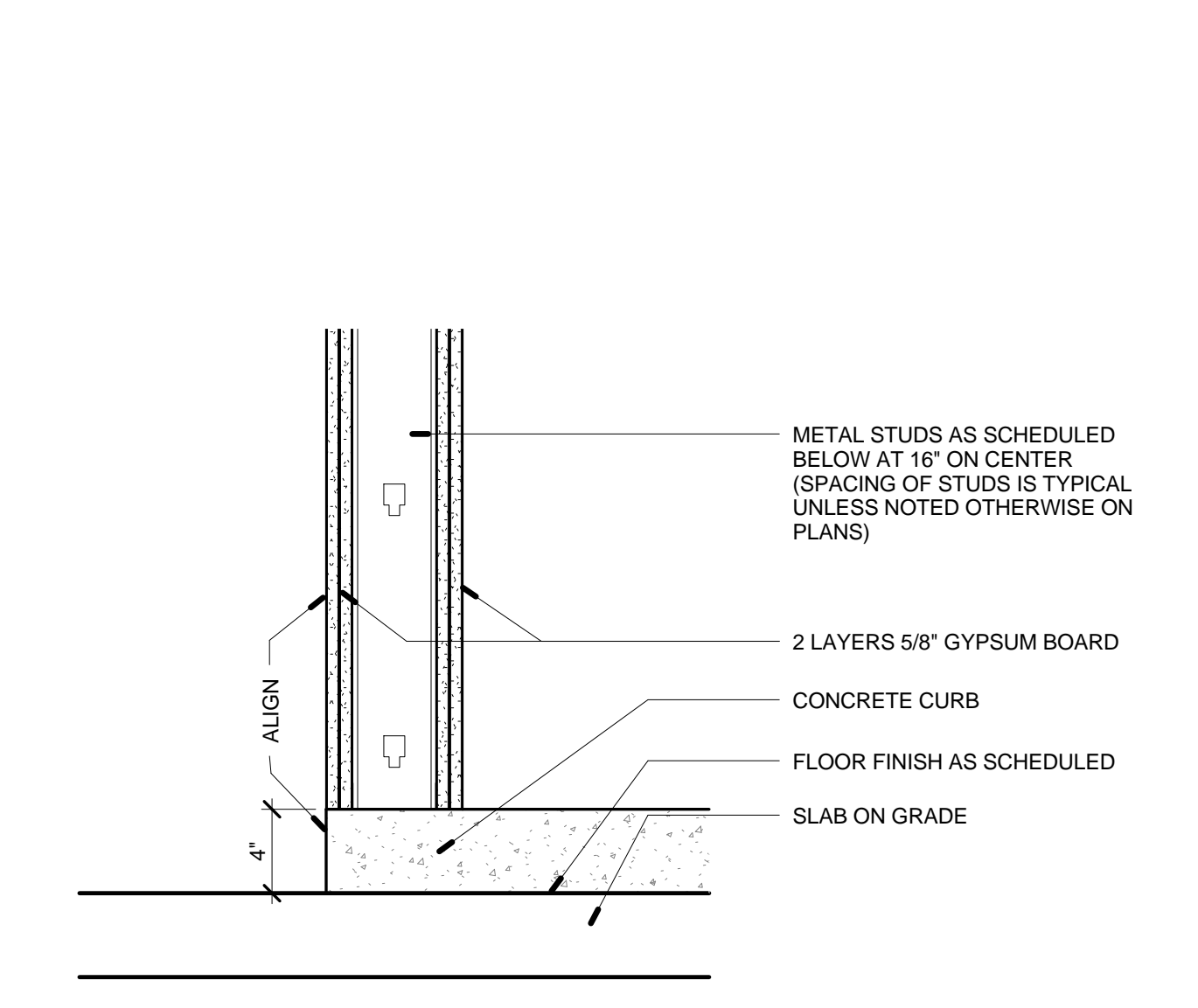
6 STAINLESS STEEL HANDRAIL
3\"/>



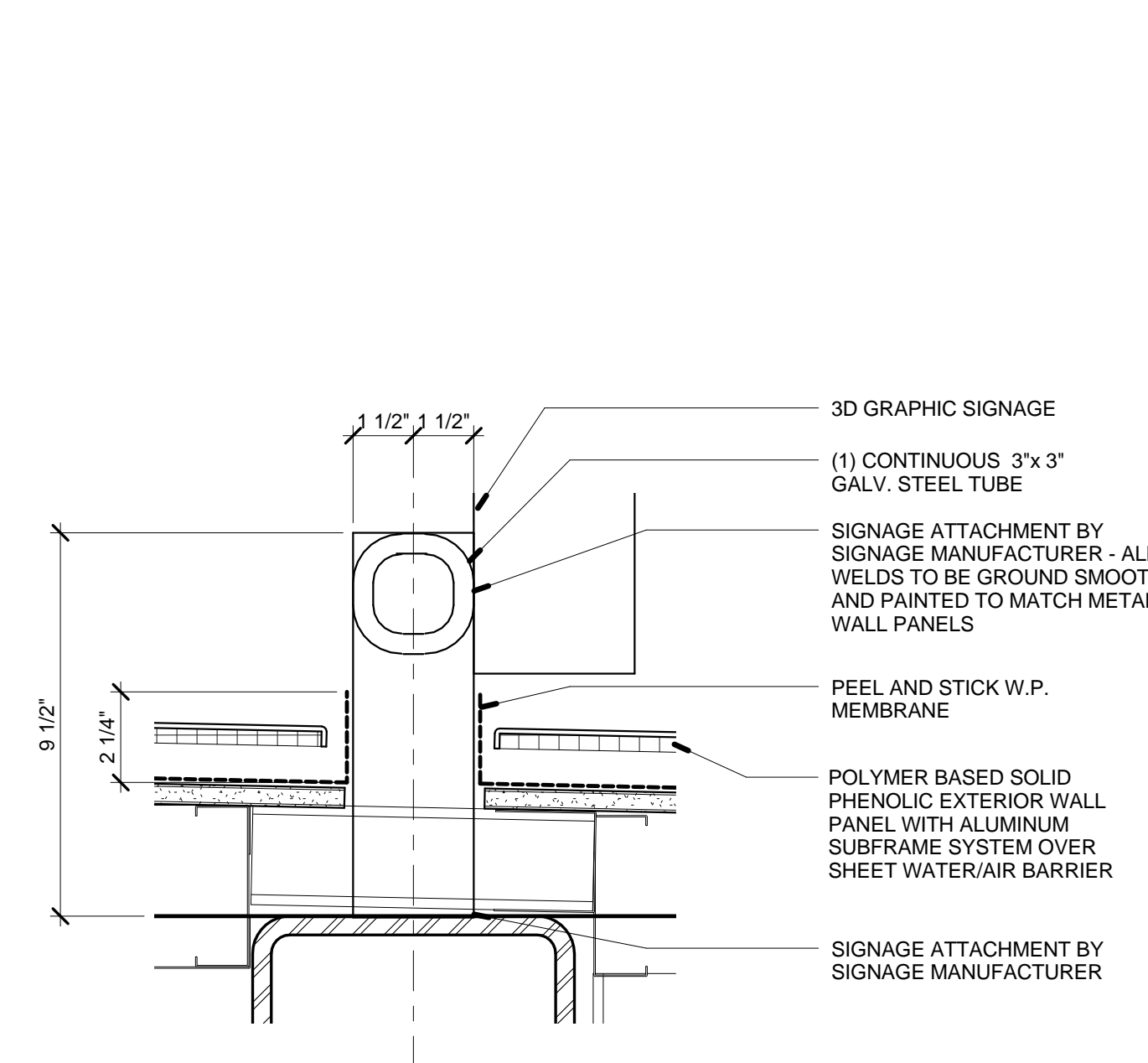
7 PENTHOUSE CURB AT WALL
3\"/>



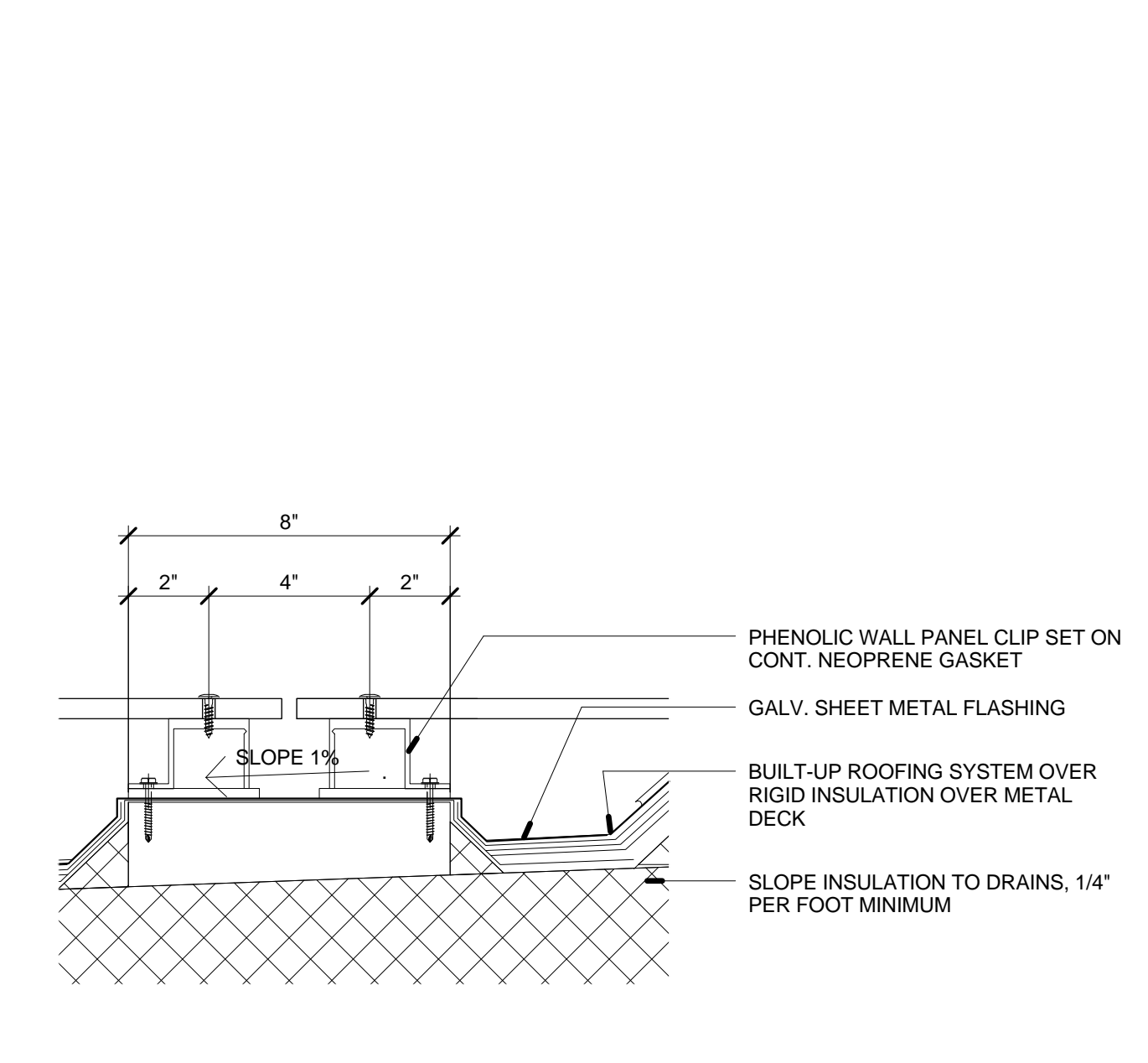
8 NON-RATED WALL ON CONC. CURB
1 1/2\"/>



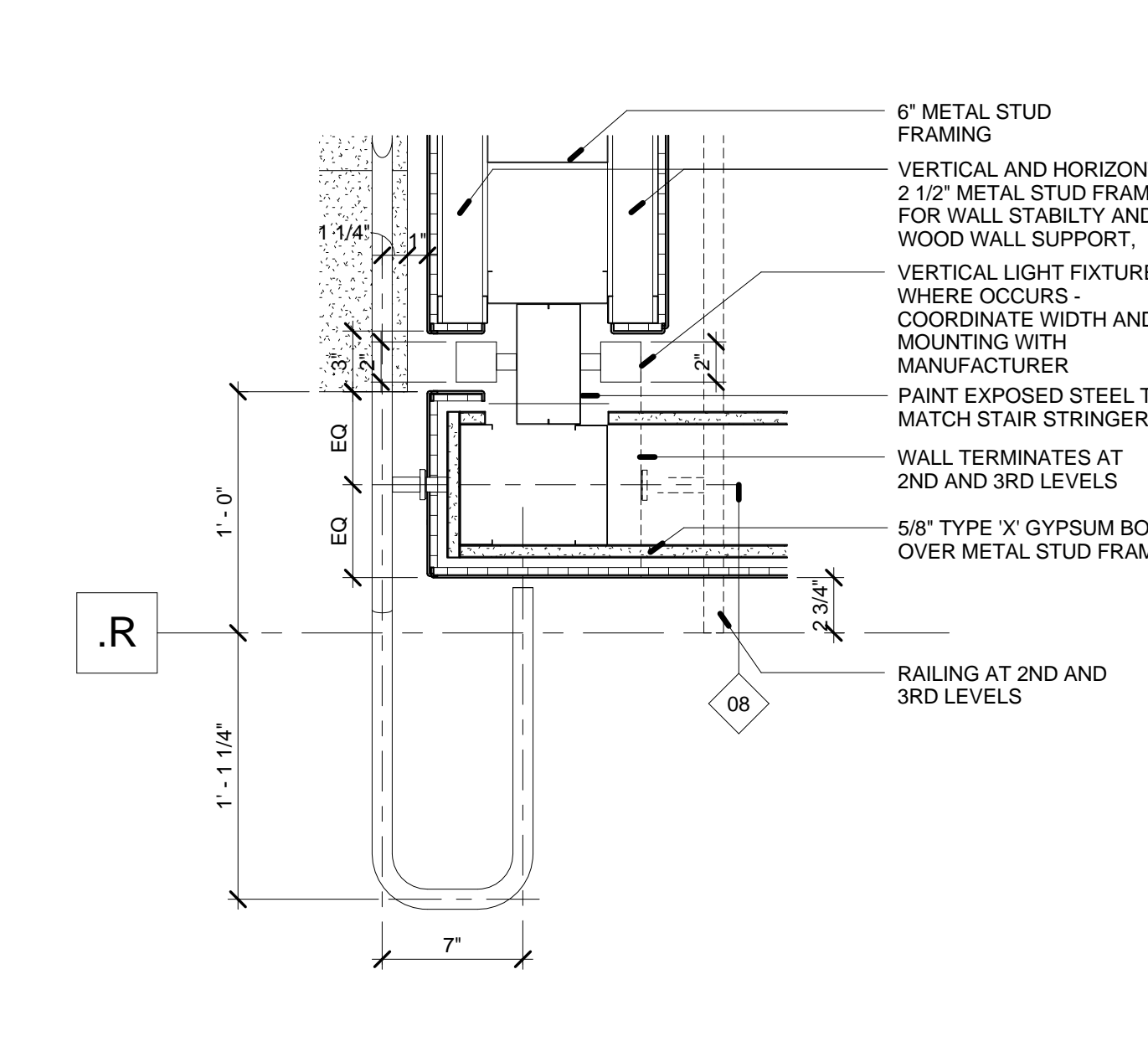
9 2 HR WALL ON CONC. FLOOR RECESS
1 1/2\"/>



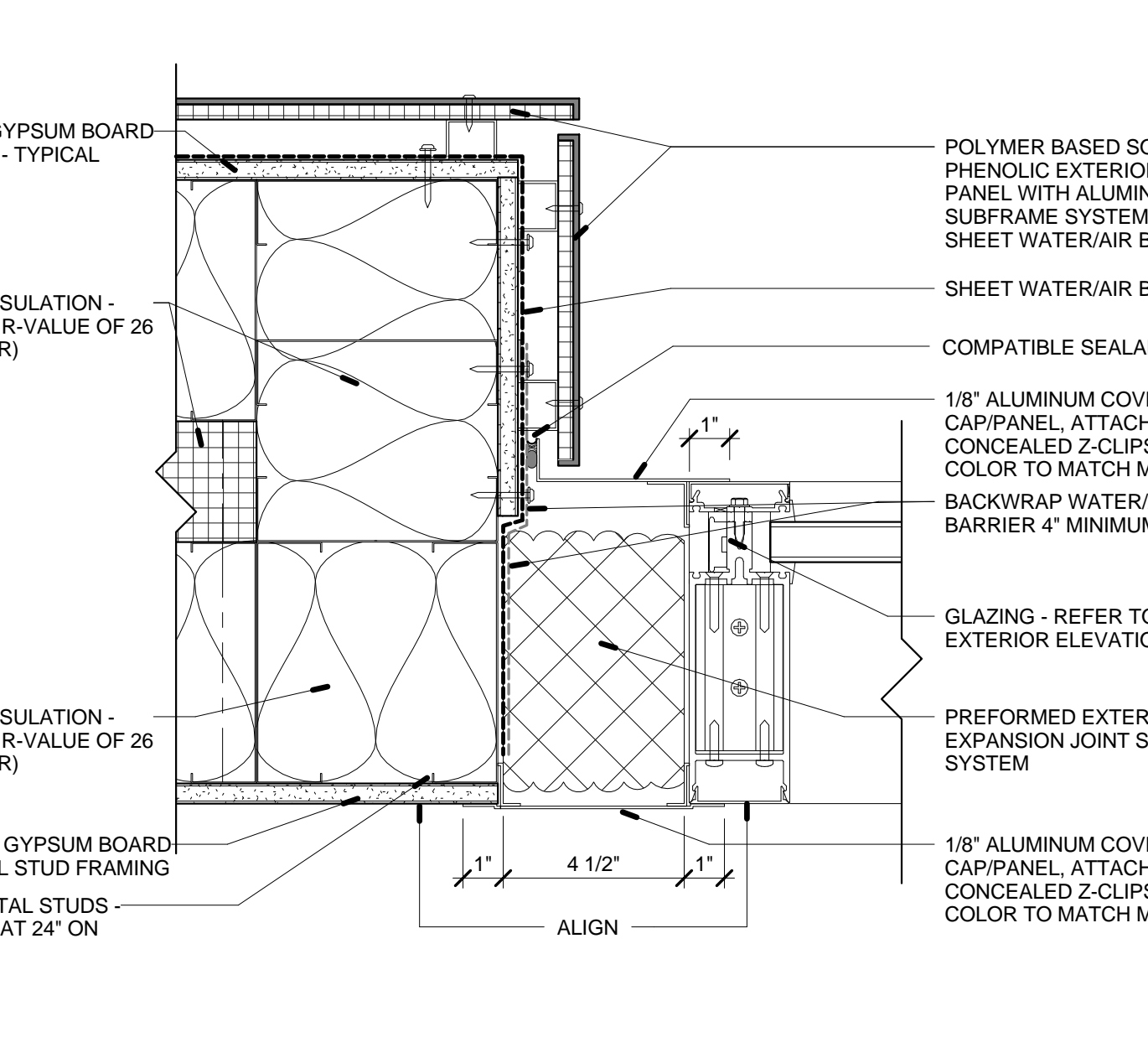
11 DETAIL AT ARCH SIGNAGE
3\"/>



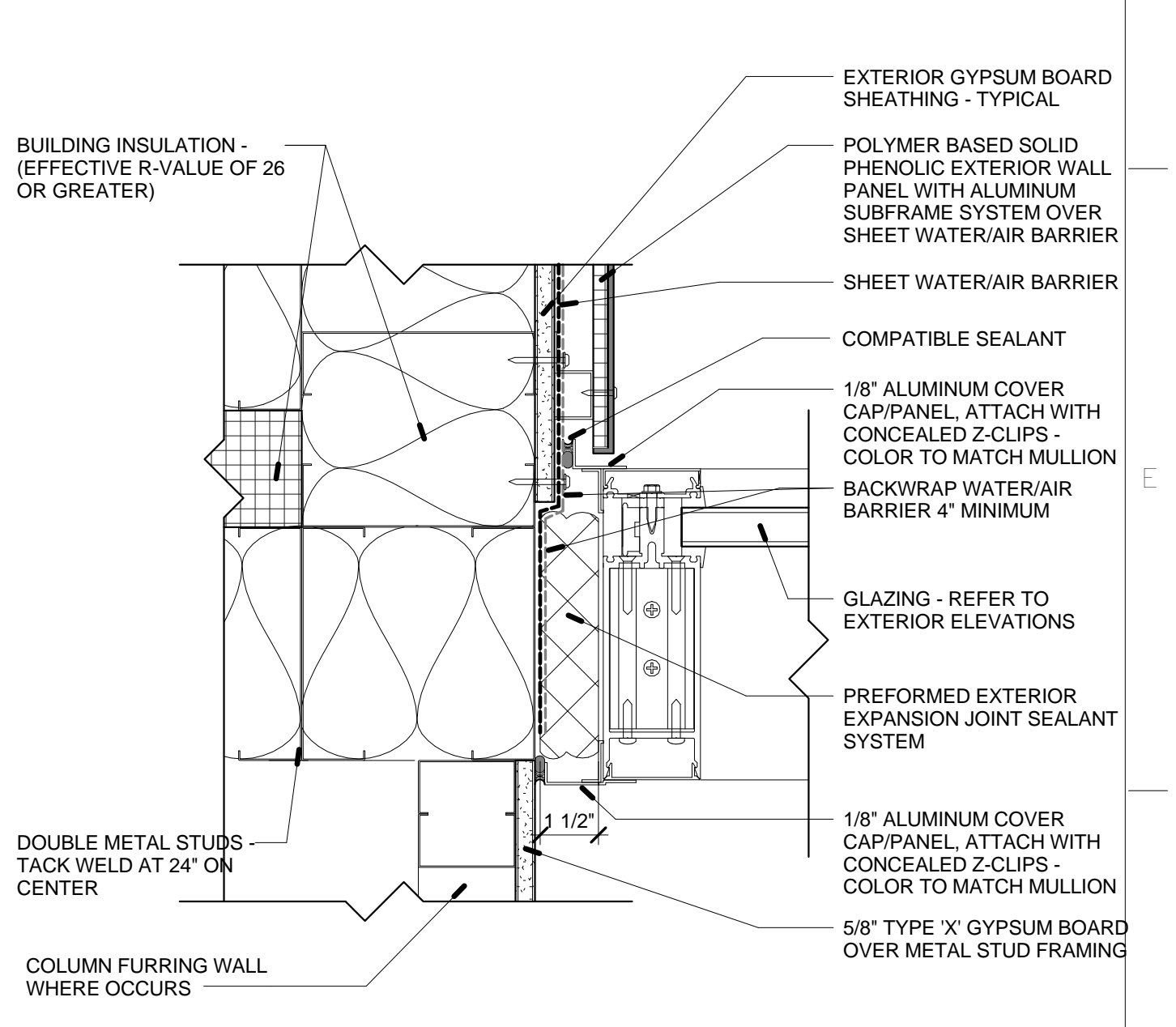
12 WALL PANEL DETAIL
3\"/>



13 PLAN DETAIL AT HAND RAILING
1 1/2\"/>



14 EXPANSION JOINT DETAIL
3\"/>



15 EXPANSION JOINT DETAIL
3\"/>

Revisions: 1 Addendum #01 08/15/2012 2 Amendment #07 10/26/2012		CONSULTANTS: CIVIL: SLATER HANIFAN GROUP, 5740 S. ARVILLE ST. #216, LAS VEGAS, NV 89118 LANDSCAPE: J W ZUNINO LANDSCAPE ARCHITECTURE, 3191 S. JONES BLVD., LAS VEGAS, NV 89146 MEP: JBA CONSULTING ENGINEERING, 5155 WEST PATRICK LANE, LAS VEGAS, NV 89118 STRUCTURAL: DEGENKOLB ENGINEERING, 235 MONTGOMERY STREET, SUITE 500, SAN FRANCISCO CA 94104 GEOTECHNICAL: NINYO AND MOORE, 6700 PARADISE ROAD, SUITE E, LAS VEGAS, NV 89119 FIRE & LIFE SAFETY: LASALLE ENGINEERING, 1000 YORK ROAD, WILLOW GROVE, PA 19090		KEY PLAN		ARCHITECT/ENGINEERS: RTKL JMA ARCHITECTURE STUDIOS A Joint Venture SILVIA J. KIM REGISTERED No. 5207 ARCHITECT STATE OF NEVADA		Drawing Title Miscellaneous Details Scale As indicated Approved: Project Director <i>Milan Arakic</i>		Project Title VA Medical Center - PHASE V, Administration Bldg. & Education Ctr. Addition Location North Las Vegas, NV Date June 15, 2012 Checked Checker Drawn Author		Project Number 593CA2202 Building Number 6 Drawing Number AE-5611 189 of 512		Office of Construction and Facilities Management Department of Veterans Affairs	
--	--	--	--	-----------------	--	---	--	---	--	--	--	---	--	---	--