

three inches = one foot

one and one half inches = one foot

one inch = one foot

three quarters inch = one foot

one half inch = one foot

three eighths inch = one foot

one quarter inch = one foot

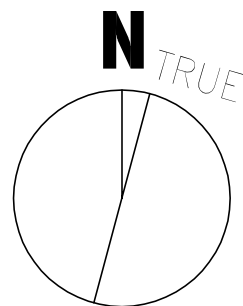
one eighth inch = one foot

CONSULTANTS:

CIVIL: SLATER HANIFAN GROUP, 5740 S. ARVILLE ST. #216, LAS VEGAS, NV 89118  
LANDSCAPE: J W ZUNINO LANDSCAPE ARCHITECTURE, 3191 S. JONES BLVD., LAS VEGAS, NV 89146  
MEP: JBA CONSULTING ENGINEERING, 5155 WEST PATRICK LANE, LAS VEGAS, NV 89118  
STRUCTURAL: DEGENKOLB ENGINEERING, 235 MONTGOMERY STREET, SUITE 500, SAN FRANCISCO CA 94104  
GEOTECHNICAL: NINYO AND MOORE, 6700 PARADISE ROAD, SUITE E, LAS VEGAS, NV 89119  
FIRE & LIFE SAFETY: LASALLE ENGINEERING, 1000 YORK ROAD, WILLOW GROVE, PA 19090

KEY PLAN

ARCHITECT/ENGINEERS:



Drawing Title  
Electrical - Diagrams

Scale  
N.T.S.

Approved: Project Director

*Melan Arabic*

Project Title  
VA Medical Center - PHASE V,  
Underground Utility Relocation

Building Number  
1/SITE

Location  
North Las Vegas, NV

Date  
10/05/2012

Checked  
RRJ

Drawn  
GSL

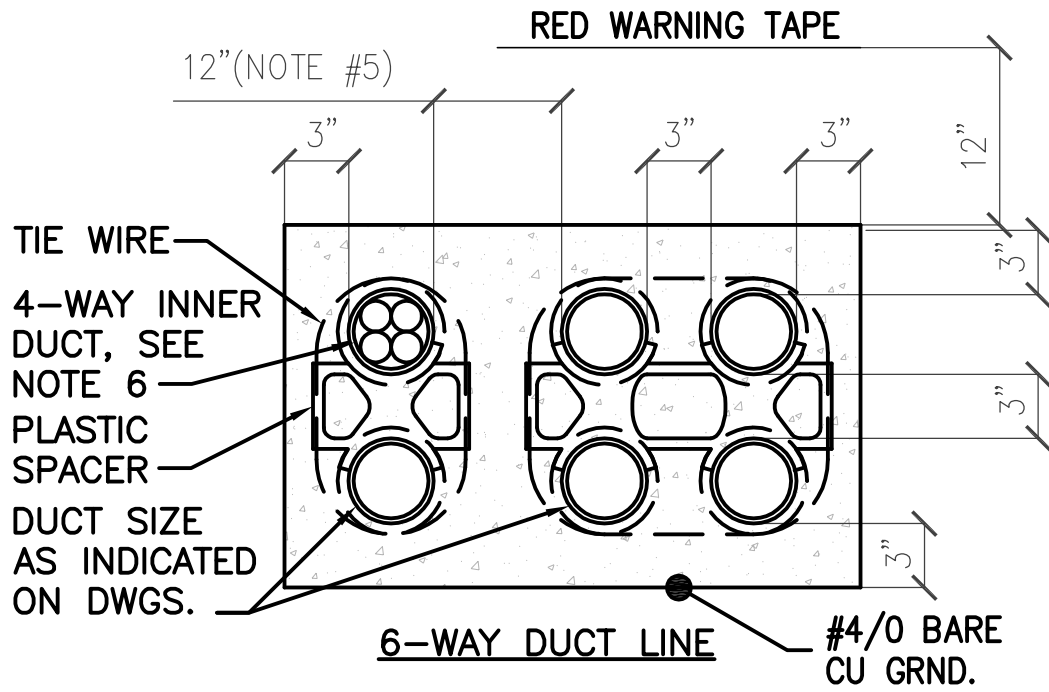
Project Number  
593CA2202

Building Number  
1/SITE

Drawing Number  
E-400

of

Office of  
Construction  
and  
Facilities  
Management



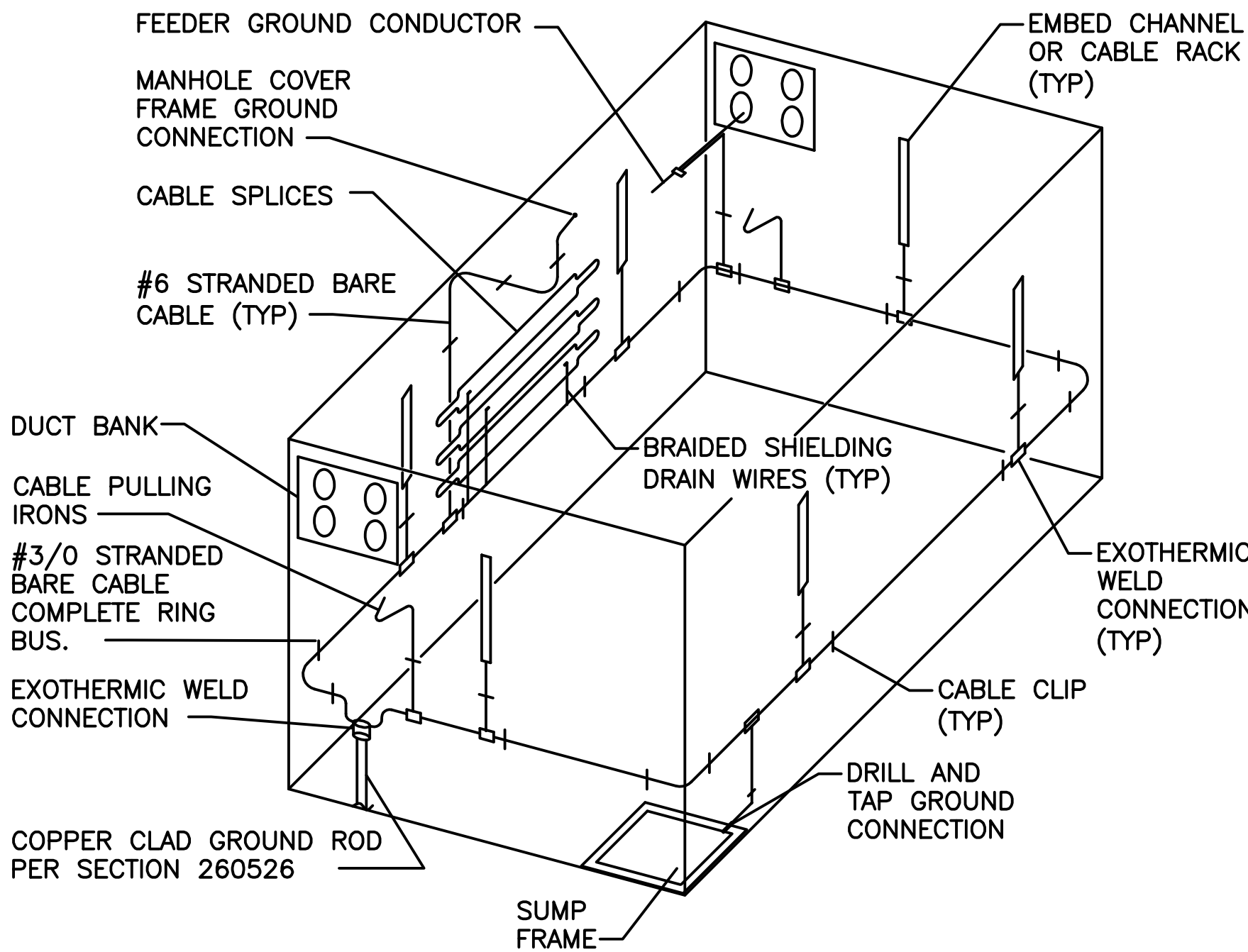
DUCT BANK NOTES:

1. CONCRETE SHALL BE 3000 P.S.I., OR AS SPECIFIED.
2. PROVIDE REINFORCING RODS ON TOP OF DUCTS WHEN CROSSING OR PLACED IN ROADWAYS.
3. MINIMUM COVER TO TOP OF ENVELOPE SHALL BE 30".
4. NON-FERROUS TIE WIRES TO BE IMBEDDED IN DUCT BED CONCRETE.
5. PROVIDE MINIMUM 12" SPACE BETWEEN POWER AND TELECOMMUNICATION DUCTS.
6. INNERDUCT QUANTITY AND SIZE AS INDICATED ON PLANS.
7. BOND #4/0 BARE Cu GRND IN EACH MANHOLE WITH EXOTHERMIC WELD CONNECTION.

DUCT BANK DIAGRAMS

SCALE: NONE

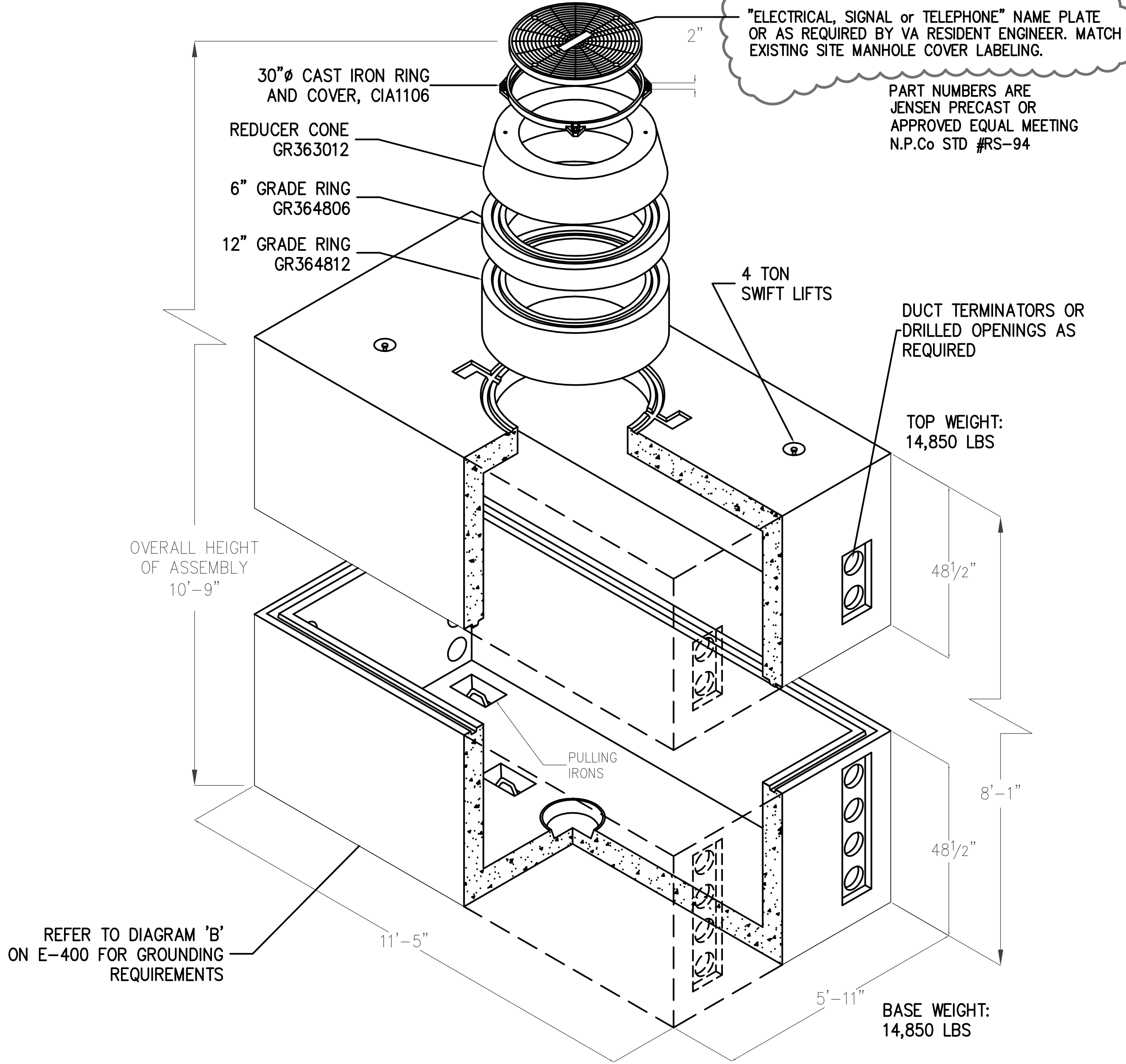
A  
E-400



MANHOLE GROUNDING DIAGRAM

SCALE: NONE

B  
E-400



MANHOLE DIAGRAM

SCALE: NONE

C  
E-400