

1. The Solicitation states (2) two different times for the project bid time. Standard Form 1442 has the time due at 1:00PM and the on sheet 53 of 58 it states the bid time as 10:00AM. Will the VA issue the bid date and time?

A: 10:00am

2. Drawing AD-103 is missing from the drawing package, as noted in the drawing index on sheet GI-001. Will the VA issue the missing drawing?

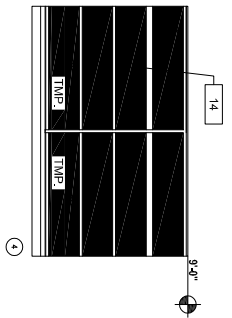
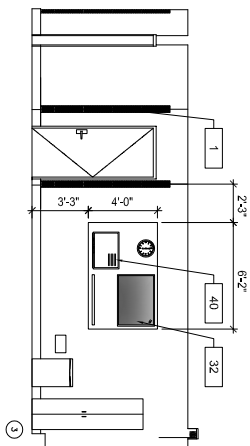
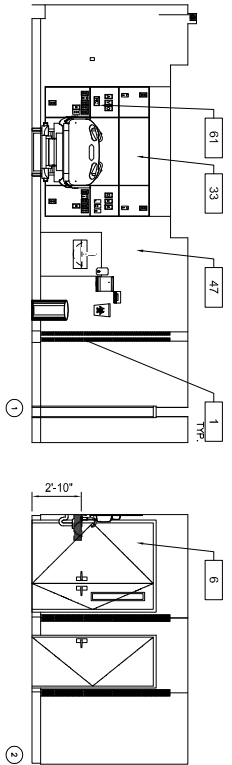
A: AD-103 is part of the set, please find attached.

3. There are (2) drawing sheet AS-702. Both are different. The drawing index on sheet GI-001 on shows (1) AS-702. Will the VA issue an revised drawing index or notify if only (1) of the AS-702 drawings are to be used in this project?

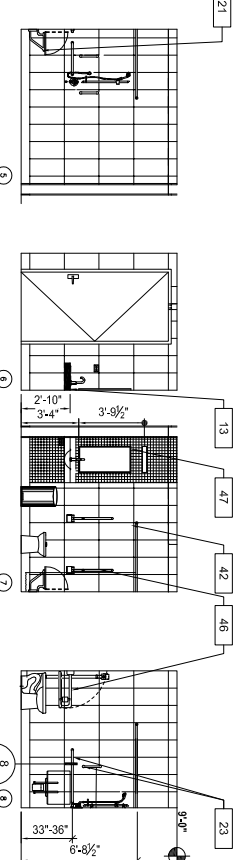
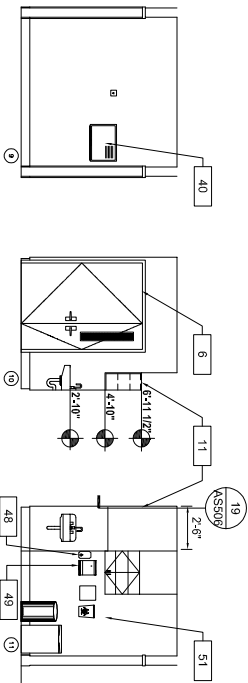
A: Please see attached sheet AS 702. This should be the correct sheet to use.

4. On sheet E1.2 in each of the rooms it shows what appears to be a data symbol with "TV" adjacent to it and a note #1. Note #1 says to coordinate with the architectural plans for the location of the mounting height and location. Reviewing the symbols legend on sheet E0.1 there does not appear to be any data symbol with a "TV" listed. Will the government please detail what their expectations is for each of the locations that have a data symbol with "TV" adjacent to it? We need conduit size and the point that it terminates to (nurse call or to a master TV system located somewhere in the interstitial) and wire type and the location where the wires will be terminated.

A: See updated sheet E01 for symbol. Provide 1" conduit with one (1) CAT6 cable from TV outlet to nearest telecom room/backboard See sheet AS 204 for mounting heights and locations.



TYPICAL PATIENT ROOM- INTERIOR ELEVATIONS (#510A, #511A, #512A, #522A)



ANTE ROOM

TYPICAL PATIENT BATHROOM

NOTES -

- SEE EQUIPMENT SCHEDULE ON SHEET CH-101 FOR ADDITIONAL INFORMATION.
SEE FINISH SCHEDULE ON SHEET AF-101 FOR ADDITIONAL INFORMATION.
FOR FUTURE MOUNTING HEIGHT SEE 10/AS206 CORNER GUARD, TYP., 8'-0" A.F.F., SEE SPECS AND FINISH SCHEDULE ON AF-101
CRASH RAIL, SEE SPECIFICATIONS AND FINISH SCHEDULE ON AF-101
HANDRAIL, 2'-10" A.F.F., TYP., SEE SPECS. AND FINISH SCHEDULE ON AF-101
INTERIOR SIGNAGE, SEE SIGNAGE SCHEDULE AND DETAILS SHEETS AS-701 AND AS-702 EXISTING COLUMN
- NEW DOOR
- NEW DOOR, ALARMED, SEE SCHEDULE ON AS801
- NEW CASEWORK
- ILLUMINATED EXIT SIGN PER DETAIL A-1-
- CARD READER/SCROLL PAD
- SOFFIT, WHERE OCCURS, SEE RCP FOR CEILING HEIGHTS
- 6" BASE, TYP., SEE SPECIFICATIONS
- NEW COUNTERTOP, SEE FINISH SCHEDULE ON AF-101
- NEW STORERFRONT, SEE AS801
- NEW HAND SCRUB SINK
- NEW LOCKERS, SEE SPECIFICATIONS
- UICB CABINET
- C08M0
- NEW FIRE EXTINGUISHING CABINET
- 24" X 36" MIRROR
- ADA LAVATORY
- ADA SHOWER WITH RETRACTABLE BENCH
- RECESSED PAPER TOWEL DISPENSER
- 1 1/2" Ø., S.S. 2 WALL GRAB BAR, PER 8/AS506
- 1" CEILING MOUNTED CURTAIN TRACK, SHOWER CURTAIN AND HOOKS
- STEP ON WASTE RECEPTACLE
- WORK STATION ON WHEELS
- CRASH CART
- F2018 7 GAL. WASTE RECEPTACLE, RED
- TELEMETRY TRANSMITTER/RECEIVER
- L-1186 GLUCOSE ANALYZER, WALL MOUNTED
- M7010 PATIENT BED
- M0500 42" TELEVISION
- A1110 HEADWALL, AMICO FREEDOM SERIES 21" PANEL/WALL FULL LENGTH GENERAL CARE TELEPHONE, DESK
- A1015
- F0400 BEDSIDE CABINET
- SOLID SURFACE COUNTERTOP, SEE FINISH SCHEDULE
- M3070 MOBILE LINEN HAMPER W/ LID
- M4255 ADJUSTABLE I.V. STAND W/ FOUR (4) HOOKS
- M7040 ADJUSTABLE OVER BED TABLE
- F3050 WHITEBOARD, DRY ERASE
- M4816 AUTOMANUAL PATIENT WARMING UNIT
- A5160 ROD WITH CURTAIN
- 43
- 44
- F0280 PATIENT CHAIR
- 45 PATIENT WARDROBE
- 46 RETRACTABLE GRAB BAR
- A1066 MIRROR, FLOAT GLASS, 18" X 36"
- 47
- A5075 SOAP DISPENSER, DISPOSABLE
- 48
- A5080 PAPER TOWEL DISPENSER, SURFACE MOUNTED
- 49
- P3100 LAVATORY, VITREOUS
- 50
- A5108 DISPOSAL SHARPS
- 51
- M1840 PRINTER/COPIER/FAX
- 52
- 53 - GLOVES DISPENSER
- 54 A4650 ICE MAKER W/DISPENSER
- 55 R7250 REFRIGERATOR
- 56 K4660 MICROWAVE, OVEN
- 57 - COFFEE MAKER
- 58 M3150 MEDICATION DISTRIBUTION SYSTEM W/ LOCK ASSEMBLY
- A0919
- 59 M3155 REFRIGERATOR, UNDERCOUNTER
- 60
- F3200 CLOCK
- 61
- NURSE CALL

CONCEPTUAL DESIGN	09/29/17
35% SCHEMATIC DESIGN	12/27/17
65% DESIGN DEVELOPMENT	02/08/18
85% CONSTRUCTION DOCUMENTS	04/23/18
100% CONSTRUCTION DOCUMENTS	08/17/18
ISSUE FOR CONSTRUCTION	09/28/18
Revisions:	Date:

CONSULTANT

ARCHITECT/ENGINEER OF RECORD

STAMP



Office of Construction and Facilities Management
U.S. Department of Veterans Affairs

Drawing Title: TYPICAL PATIENT ROOM & RESTROOM ELEVATIONS

Phase: 100% CONSTRUCTION DOCUMENTS

Project Title: (5E) 4 PATIENT ROOM CONVERSION TO SINGLE PATIENT ROOMS, (POD-D)

Project Number: 664-14-109D
Building Number: 1

Approval: Project Director

FULLY SPRINKLERED

Location: 3350 LA JOLLA VILLAGE DR, SAN DIEGO, CA 92161
Issue Date: 09/28/2018
Checked: JM
Drawn: MC-ML

Drawing Number: AS 204

SYMBOLS AND ABBREVIATIONS

WORK DEFINITION

	HEAVY LINEWORK INDICATES NEW WORK
	HEAVY DASHED LINEWORK INDICATES EXISTING TO BE REMOVED
	LIGHT LINEWORK INDICATES EXISTING TO REMAIN
	CROSS HATCHING INDICATES EXISTING DEVICE TO BE REMOVED - MAINTAIN CIRCUIT CONTINUITY
	CONDUIT: ROUTED BELOW FINISHED FLOOR LEVEL
	CONDUIT: ROUTED UNDERGROUND
	CONDUIT UP
	CONDUIT DOWN
	CONDUIT CAPPED
	RACEWAY MARKING INDICATES QUANTITY OF WIRES IN CONDUIT - SMALL HASH MARKS INDICATE PHASE CONDUCTORS - LARGER HASH MARK INDICATES NEUTRAL - DOT INDICATES GROUND WIRE - DOT WITH HASH INDICATES ISOLATED GROUND ALL UNMARKED CONDUIT RUNS ARE 1/2" CONDUIT WITH 3/12 HOT, NEUTRAL, GROUND, UNLESS NOTED OTHERWISE
	HOME RUN - NUMBER OF CONDUCTORS AS INDICATED - LETTER DESIGNATION INDICATES PANEL - NUMBER(S) INDICATE CIRCUIT
	CABLE TRAY
	JUNCTION BOX
	PULLBOX
	HANDHOLE WITH DESIGNATION
	MANHOLE WITH DESIGNATION

LIGHTING

	LIGHTING FIXTURE TYPE - REFER TO SCHEDULE FOR TYPE
	LIGHTING FIXTURE: ADJACENT NUMERAL INDICATES CIRCUIT GROUPING LOWER-CASE LETTER DENOTES SWITCHING
	2'x4' LED FIXTURE
	2'x4' LED FIXTURE ON EMERGENCY CIRCUIT
	2'x2' LED FIXTURE
	2'x2' LED FIXTURE ON EMERGENCY CIRCUIT
	2'x2' SURFACE MOUNTED LED FIXTURE ON EMERGENCY CIRCUIT
	4' WALL-MOUNTED LED FIXTURE - TYPE AS NOTED
	3' WALL-MOUNTED LED FIXTURE - TYPE AS NOTED
	2' WALL-MOUNTED LED FIXTURE - TYPE AS NOTED
	4' WALL-MOUNTED LED FIXTURE ON EMERGENCY CIRCUIT
	3' WALL-MOUNTED LED FIXTURE ON EMERGENCY CIRCUIT
	2' WALL-MOUNTED LED FIXTURE ON EMERGENCY CIRCUIT
	4' STRIP LED LIGHTING FIXTURE - TYPE AS NOTED
	CEILING-MOUNTED LIGHTING FIXTURE - TYPE AS NOTED
	CEILING-MOUNTED FIXTURE ON EMERGENCY CIRCUIT
	WALL-MOUNTED LIGHTING FIXTURE - TYPE AS NOTED
	WALL-MOUNTED FIXTURE ON EMERGENCY CIRCUIT
	WALL MOUNTED EXIT SIGN ON EMERGENCY CIRCUIT
	EXIT SIGN- ARROW INDICATES DIRECTION OF EGRESS
	NIGHT LIGHT
	SINGLE-POLE WALL SWITCH
	WALL SWITCH - SUBSCRIPT INDICATES: 2 - DOUBLE-POLE 3 - THREE-WAY 4 - FOUR-WAY D - DIMMER (0-10V ELECTRONIC TO BE COORDINATED WITH FIXTURE DRIVER) EP - EXPLOSION-PROOF K - KEY-OPERATED LV - LOW-VOLTAGE LVM - LOW-VOLTAGE MASTER M - MANUAL MOTOR STARTER WITH OVERLOADS MC - MOMENTARY-CONTACT O - OCCUPANCY SENSING P - SWITCH WITH PILOT LIGHT T - TIMER WP - WEATHERPROOF
	INDICATES MULTIPLE SWITCHES IN GANGED BOX WITH COMMON COVERPLATE. a,b,c INDICATES NUMBER OF INDIVIDUAL SWITCHES AND FIXTURES CONTROL. (PROVIDE BARRIERS BETWEEN 120V AND 277V, TWO DIFFERENT 277V CIRCUITS) (AND BETWEEN NORMAL, CRITICAL AND LIFE SAFETY BRANCH CIRCUITS)
	INDICATES SWITCHES a,b MOUNTED IN SEPARATE BOXES WITH SEPARATE COVERPLATES
	OCCUPANCY SENSOR

ELECTRICAL EQUIPMENT

	FLUSH MOUNTED PANELBOARD
	SURFACE MOUNTED PANELBOARD
	480V PANELBOARD - SEE PANEL SCHEDULE
	208V OR 240V PANELBOARD - SEE PANEL SCHEDULE
	EQUIPMENT CABINET - TYPE AS INDICATED
	EQUIPMENT CABINET - TYPE AS INDICATED
	COMBINATION STARTER HP RATED, 3-POLE, NEMA SIZE 1 MINIMUM UNLESS NOTED OTHERWISE - OVERCURRENT PROTECTION AS REQUIRED BY EQUIPMENT MANUFACTURER OR AS NOTED

POWER DEVICES

	RECEPTACLE OUTLET: SUBSCRIPT NUMBER INDICATES CIRCUIT GROUPING, SUBSCRIPT LETTER INDICATES: AC - MOUNTED 3" ABOVE COUNTER BACKSPASH C - CLOCK HANGER EP - EXPLOSION PROOF G - WITH GROUND FAULT PROTECTION IG - ISOLATED GROUND S - SAFETY TYPE T - TIMER CONTROLLED WP - WEATHERPROOF
	GROUNDING TYPE DUPLEX RECEPTACLE, 125V, 20A CONNECTED TO EMERGENCY CIRCUIT
	GROUNDING TYPE DUPLEX RECEPTACLE, 125V, 20A
	CEILING-MOUNTED DUPLEX RECEPTACLE, 125V, 20A
	GROUNDING TYPE SINGLE RECEPTACLE, 125V, 20A
	GROUNDING TYPE DOUBLE-DUPLEX (QUAD) RECEPTACLE, 125V, 20A
	SPECIAL PURPOSE RECEPTACLE SUBSCRIPT LETTER INDICATES TYPE

RISER DIAGRAM

	PAO - MOUNTED TRANSFORMER SUBSCRIPT NUMBERS INDICATE: FIRST NUMBER - NUMBER OF TRANSFORMERS SECOND NUMBER - TRANSFORMER KVA RATING THIRD NUMBER - NUMBER OF PHASES
	DELTA
	WYE
	CURRENT TRANSFORMER QUANTITY AND RATIO AS INDICATED
	CONTACT - NORMALLY OPEN NUMBER INDICATES REFERENCE LETTER INDICATES FUNCTION
	CONTACT - NORMALLY CLOSED NUMBER INDICATES REFERENCE LETTER INDICATES FUNCTION
	GROUND CONNECTION
	GROUND ROD
	DISCONNECT SWITCH 3-POLE UNLESS NOTED OTHERWISE - OVERCURRENT PROTECTION AS REQUIRED BY EQUIPMENT MANUFACTURER OR AS NOTED
	CIRCUIT BREAKER NUMBER INDICATES TRIP SETTING AND NUMBER OF POLES CL - INDICATES CURRENT LIMITING ST-INDICATES SHUNT TRIP
	EQUIPMENT CONNECTION
	FUSE WITH RATING
	DRAWOUT AC TYPE CIRCUIT BREAKER (600V)
	PRIMARY FUSED CUTOFF SWITCH
	FUSED DISCONNECT SWITCH

TELECOMMUNICATIONS

	TELECOMMUNICATION OUTLET (3 CAT6 CABLES PER OUTLET IN 1'c. TO TELECOM ROOM).
	SPEAKER - CEILING RECESSED MOUNTED
	TELEVISION OUTLET (1 CAT6 CABLE PER OUTLET IN 1'c. TO TELECOM ROOM).

NURSE CALL

	NURSES CALL PUSHBUTTON STATION B - INDICATES 'CODE BLUE' FO - INDICATES FOOT-OPERATED
	NURSES CALL - EMERGENCY ASSISTANCE PUSHBUTTON STATION T - TOILET STATION
	NURSES CALL PATIENT STATION
	NURSES CALL TRANSFER STATION
	NURSES CALL - STAFF LOCATOR PUSHBUTTON STATION - STAFF LOCATOR
	NURSES CALL EMERGENCY STAFF ASSISTANCE STATION
	NURSES CALL DUTY STATION
	AUDIO-VISUAL NURSE CALL SYSTEM CONTROL ANNUNCIATOR
	VISUAL NURSE CALL SYSTEM CONTROL ANNUNCIATOR
	CEILING-MOUNTED NURSES CALL SIGNAL DOME LIGHT Z - INDICATES ZONE LIGHT
	WALL-MOUNTED NURSES CALL SIGNAL DOME LIGHT
	WALL-MOUNTED NURSES CALL LIGHT

ACCESS CONTROL

	DOOR OPERATOR
	CARD READER

GENERAL DEMOLITION NOTES

- ALL ELECTRICAL EQUIPMENT SHALL BE DE-ENERGIZED PRIOR TO COMMENCING ANY DEMOLITION WORK.
- FOLLOW ALL LOCKOUT/TAGOUT PROCEDURES PER NFPA 70E.
- DEMOLISH ELECTRICAL CIRCUITS AS NECESSARY TO ACCOMMODATE RENOVATION WORK. REMOVE ALL ELECTRICAL DEVICES (DISCONNECTS, STARTERS, WIRING, CONDUIT, ETC.) ASSOCIATED WITH EQUIPMENT REMOVED BY OTHERS. EXISTING CIRCUITS SERVING LIGHTING FIXTURES AND/OR RECEPTACLES FOR A GIVEN AREA SHALL BE REUSED TO THE FULLEST EXTENT POSSIBLE AND SHALL SERVE THE NEW LAYOUT FOR THAT AREA. PROVIDE CIRCUIT MODIFICATIONS INDICATED OR AS OTHERWISE REQUIRED TO MAINTAIN THE CONTINUITY OF EXISTING CIRCUITS THAT REMAIN.
- ALL EXISTING DEVICES SHOWN ARE BASED ON ENGINEER'S FIELD OBSERVATION ONLY. ALL DEVICES MAY NOT HAVE BEEN ABLE TO BE OBSERVED. VERIFY AND REMOVE ALL HIDDEN DEVICES AS REQUIRED.
- CONDUITS MAY BE ABANDONED IN FLOOR AND WALLS ONLY. REMOVE ALL WIRING FROM ABANDONED CONDUITS. DISCONNECT FROM ALL POWER SOURCES AND PROVIDE BLANK PLATES ON ALL ABANDONED CONDUITS 1" BELOW FINISHED FLOOR AND GROUT FLUSH. ABANDONED CONDUIT SHALL BE CAPPED AT BOTH ENDS.
- TRACE ALL CIRCUITS IN EXISTING PANELS TO REMAIN SERVING AREAS AFFECTED BY DEMOLITION. LABEL ALL LOADS AND UNUSED CIRCUIT BREAKERS AND TIGHTEN ALL CONNECTIONS. PROVIDE NEW TYPED DIRECTORY PROTECTED BY PLASTIC AND PLACE IN COVER OF PANELS CONSISTENT WITH NEW CONSTRUCTION.
- EXISTING LIGHTING BALLASTS AND LAMPS MAY CONTAIN HAZARDOUS MATERIALS AND ELEMENTS. DISPOSE OF BALLASTS AND LAMPS IN ACCORDANCE WITH EPA REGULATIONS.
- TRACE AND DETERMINE THE PANELBOARD AND BRANCH CIRCUIT BREAKER ASSIGNMENT OF EACH EXISTING LIGHTING FIXTURE OUTLET, RECEPTACLE OUTLET, MOTOR CONNECTION, EQUIPMENT CONNECTIONS AND SIMILAR ITEMS INCLUDING MECHANICAL AND PLUMBING EQUIPMENT AND EQUIPMENT ABOVE CEILINGS. ANNOTATE THE CORRECT CIRCUIT ASSIGNMENTS ON THE EXISTING CONDITION (RECORD / AS-BUILT) DRAWINGS PROVIDED BY THE OWNERS REPRESENTATIVE FOR THIS PURPOSE. DURABLY LABEL RECEPTACLES (PROPOSED AND EXISTING) ON THE BACK SIDE OF THE DEVICE PLATE WITH THE PANEL AND CIRCUIT NUMBER.

GENERAL NOTES

- COMPLY WITH THE 2017 NATIONAL ELECTRICAL CODE AS ADOPTED AND AMENDED BY THE LOCAL AUTHORITY HAVING JURISDICTION.
- THE LOCATIONS OF ELECTRICAL DEVICES OR LIGHTING FIXTURES INDICATED ON ARCHITECTURAL PLANS ELEVATIONS OR SECTIONS TAKE PRECEDENCE OVER LOCATIONS INDICATED ON THE ELECTRICAL DRAWINGS.
- REFER TO THE ARCHITECTURAL REFLECTED CEILING PLANS FOR EXACT LIGHTING FIXTURE LOCATIONS.
- IT SHALL BE THE CONTRACTOR'S RESPONSIBILITY TO OBTAIN A COMPLETE SET OF DRAWINGS AND SPECIFICATIONS. HE/SHE SHALL CHECK THE DRAWINGS OF THE OTHER TRADES AND SHALL CAREFULLY READ THE ENTIRE SPECIFICATIONS AND DETERMINE HIS RESPONSIBILITIES. FAILURE TO DO SO SHALL NOT RELEASE THE CONTRACTOR FROM DOING THE WORK IN COMPLETE ACCORDANCE WITH THE DRAWINGS AND SPECIFICATIONS.
- THE CONTRACTOR SHALL COORDINATE HIS WORK WITH OTHER TRADES AT THE SITE. ANY COST TO ROUTE CONDUIT OTHER THAN AS SHOWN ON THE PLANS SHALL BE INCURRED BY THE CONTRACTOR.
- WHEREVER A DISCREPANCY IN QUANTITY OR SIZE OF CONDUIT, WIRE, EQUIPMENT DEVICES, CIRCUIT BREAKERS, TRANSFORMERS GROUND FAULT PROTECTION SYSTEM, ETC. (ALL MATERIALS, ARISES ON THE DRAWINGS AND/OR SPECIFICATIONS), THE CONTRACTOR SHALL BE RESPONSIBLE FOR PROVIDING AND INSTALLING ALL MATERIAL AND SERVICES REQUIRED BY THE STRICTEST CONDITIONS NOTED ON DRAWINGS AND/OR IN THE SPECIFICATIONS TO ENSURE COMPLETE AND OPERABLE SYSTEMS AS REQUIRED BY THE OWNER OR ENGINEER.
- FIELD VERIFICATION: VERIFY ALL DEVICES AND CONDITIONS BEFORE BIDDING OR PROCEEDING WITH THE WORK.

TECHNOLOGY GENERAL NOTES:

- COMPLY WITH NATIONAL ELECTRICAL CODE 2017 EDITION, ALONG WITH ALL LOCAL AMENDMENTS.
- LOCATIONS OF TECHNOLOGY DEVICES AND OUTLETS INDICATED ON THE ARCHITECTURAL INTERIOR ELEVATIONS PLANS TAKE PRECEDENCE OVER LOCATIONS INDICATED ON THE TECHNOLOGY DRAWINGS.
- COMMUNICATION OUTLET HEIGHTS SHOWN ARE MEASURED FROM THE FINISHED FLOOR TO THE CENTERLINE OF THE OUTLET UNLESS OTHERWISE NOTED.
- REFER TO THE ARCHITECTURAL REFLECTED CEILING PLANS TO REFERENCE CONDUIT ROUTING, PENETRATIONS AND CEILING MOUNTED DEVICES EXACT LOCATION.
- PROVIDE SLEEVES THROUGH ALL FIRE RATED WALLS PENETRATIONS, OCCUPANCY SEPARATION WALLS, AND SMOKE COMPARTMENT WALLS ABOVE SUSPENDED CEILING HEIGHT, TO ACCOMMODATE CABLES FROM IT ROOMS TO CONDUIT AND HORIZONTAL DISTRIBUTION. QUANTITY TO EQUAL CAPACITY OF ASSOCIATE HORIZONTAL DISTRIBUTION SYSTEM. REFER TO ARCHITECTURAL DRAWINGS FOR RATED WALLS LOCATIONS AND FIRE STOPPING PENETRATION DETAIL.
- COORDINATE MODULAR FURNITURE OUTLETS W/FURNITURE VENDOR. OUTLETS TO BE SERVICED VIA 1" (MINIMUM) CONDUIT THRU NEAREST INTERIOR WALL TO ACCESSIBLE CEILING.
- CONTRACTOR TO COORDINATE RISER SLEEVE PENETRATIONS WITH STRUCTURAL AND ELECTRICAL ENGINEERS PRIOR TO CONCRETE SLAB/DECK AND SHEAR WALL PENETRATION.
- CONTRACTOR TO SIZE AND PROVIDE CONDUIT FOR CABLEING DISTRIBUTION SPANNING ALL HARD CEILING AREAS AND SOFFITS TO ACCESSIBLE CEILINGS (WHERE NECESSARY). REFER TO ARCHITECTURAL REFLECTED CEILING PLANS PRIOR TO CONDUIT ROUTING AND PENETRATIONS.
- NOT ALL SYMBOLS AND ABBREVIATIONS ON THIS SHEET ARE USED.
- ALL HORIZONTAL DISTRIBUTION COPPER AND FIBER OPTIC CABLE TO BE PLENUM RATED CABLE.
- ALL CONDUITS THAT RUNS THOUGH THE RETURN AIR PLENUM MUST BE PLENUM RATED.

ABBREVIATIONS

AC	3" ABOVE COUNTER BACKSPASH	IH	INSTA-HOT WATER DISPENSER
AFF	ABOVE FINISHED FLOOR	J-BX	JUNCTION BOX
AG	ABOVE GRADE	MAG	MAGNETIC
A,AMP	AMPERE	MCC	MOTOR CONTROL CENTER
A/V	AUDIO/VISUAL	MDF	MAIN DISTRIBUTION FRAME/FACILITY
ATS	AUTOMATIC TRANSFER SWITCH	MH	MANHOLE
AWG	AMERICAN WIRE GAUGE	MM	MULTIMODE
CATV	COMMUNITY ACCESS TELEVISION	MTD	MOUNTED
CB	CIRCUIT BREAKER	MW	MICROWAVE
CCTV	CLOSED CIRCUIT TELEVISION	N	NEUTRAL
CEC	CALIFORNIA ELECTRICAL CODE	NIC	NOT IN CONTRACT
CKT	CIRCUIT	PB	PULLBOX
CLG	CEILING	PNL	PANEL, PANELBOARD
CM	CEILING MOUNTED	POS	POSITION/POINT OF SALE
COMM	COMMUNICATIONS	RECEPT	RECEPTACLE
C	CONDUIT	SCE	SOUTHERN CALIFORNIA EDISON
CO	CONDUIT ONLY	SWBD	SWITCHBOARD
CTRL	CONTROL	TELECOM	TELECOMMUNICATIONS
CU	COPPER	TGB	TELECOMMUNICATIONS GROUNDING BUSBAR
D	DATA	TMBG	TELECOMMUNICATIONS MAIN GROUNDING
DED	DEDICATED	BUSBAR	BUSBAR
DEV	DEVICE	TV	TELEVISION
EG	EQUIPMENT GROUND	TYP	TYPICAL
EX	EXISTING	UG	UNDER GROUND
FA	FIRE ALARM	UON	UNLESS OTHERWISE NOTED
FB	FLOOR BOX	V	VOLT OR VOICE
FBOIC	FURNISHED BY OTHERS, INSTALLED BY CONTRACTOR	W	WIRE, WATTI, WALLPHONE
FI	FILM ILLUMINATOR	WAP	WIRELESS ACCESS POINT
FMC	FLEXIBLE METAL CONDUIT	WPR	WEATHERPROOF
FO	FIBER OPTIC(AL)	XFMR	TRANSFORMER
FOC	FACE OF COLUMN	XR	EXISTING RELOCATED
G,GRD	GROUND	#	PHASE
GD	GARBAGE DISPOSAL		
GFI,GFCI	GROUND FAULT CIRCUIT INTERRUPTER		
HH	HAND HOLE		
HP	HORSEPOWER		
IDF	INTERMEDIATE DISTRIBUTION FRAME/FACILITY		

OUTLET MOUNTING HEIGHTS	
OUTLET HEIGHTS ARE SHOWN ON THE ELECTRICAL DRAWINGS OR ON THE ARCHITECTURAL DRAWINGS. IF OUTLET HEIGHTS ARE NOT SHOWN OR REQUIRED, THEN LOCATE OUTLETS AS NOTED BELOW. OUTLET HEIGHTS ARE MEASURED FROM THE FINISHED FLOOR TO THE CENTERLINE OF THE OUTLET UNLESS OTHERWISE NOTED.	
RECEPTACLES	18 INCHES (460 mm)
LIGHT SWITCHES	45 INCHES (1200 mm)
CLOCK OUTLET	80 INCHES (2030 mm)
PANELBOARDS	72 INCHES (1830 mm) TO TOP OF PANELBOARD
TELECOM OUTLET (DESK)	18 INCHES (460 mm)
TELECOM OUTLET (WALL)	45 INCHES (1370 mm)

OVERCURRENT DEVICE KEY		
CIRCUIT BREAKER	SAFETY SWITCHES	COMBINATION STARTER DISCONNECTS/ STARTER - CIRCUIT BREAKER
NUMBER OF POLES TRIP (AMPERES) FRAME (AMPERES) I.C. (1000 AMPS)	NUMBER OF POLES FUSE SIZE (AMPS) RATING (AMPERES) FUSE GLASS (UL)	NUMBER OF POLES FUSE/CB TRIP SIZE SWITCH/FRAME SIZE STARTER NEMA SIZE
$\frac{3}{*}$ $\frac{*}{100}$ $\frac{100}{10}$	$\frac{3}{*}$ $\frac{*}{100}$ $\frac{100}{RIG}$	$\frac{3}{*}$ $\frac{*}{100}$ $\frac{100}{1}$
* "NA" INDICATES NON-AUTOMATIC C/B * "NF" INDICATES NON-FUSED SWITCH * "50" INDICATES TRIP OR FUSE SIZE		

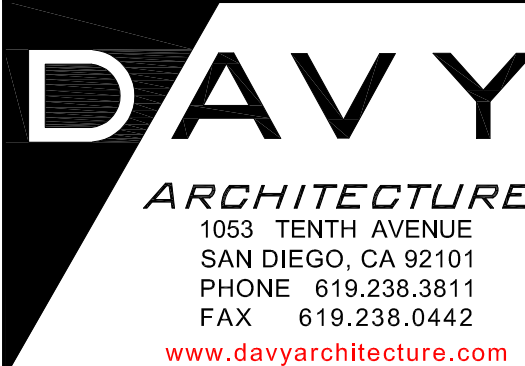
CONCEPTUAL DESIGN	09/20/17
35% SCHEMATIC DESIGN	12/21/17
65% DESIGN DEVELOPMENT	02/08/18
95% CONSTRUCTION DOCUMENTS	04/23/18
100% CONSTRUCTION DOCUMENTS	08/17/18
FOR CONSTRUCTION ISSUE	09/28/18
Revisions:	Date:

CONSULTANT

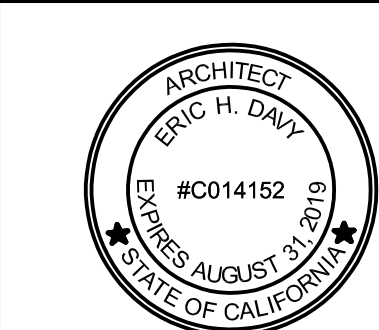


09/28/18

ARCHITECT/ENGINEER OF RECORD



STAMP



Office of
Construction
and Facilities
Management



U.S. Department
of Veterans Affairs

Drawing Title

ELECTRICAL SYMBOLS AND ABBREVIATIONS

Approved: Project Director

Phase

FOR CONSTRUCTION ISSUE

FULLY SPRINKLERED

Project Title

(5E) 4 PATIENT ROOM CONVERSION
TO SINGLE PATIENT ROOMS.(POD-D)

Location

3350 LA JOLLA VILLAGE DR. SAN DIEGO, CA 92161

Issue Date

09/28/2018

Checked

JSD

Drawn

TAG

Project Number

664-14-109D

Building Number

1

Drawing Number

E01