

All Stainless Steel
Laminar Flow Glovebox Isolator
Sizes include (3', 4', 6') full width work areas

LFGI SERIES

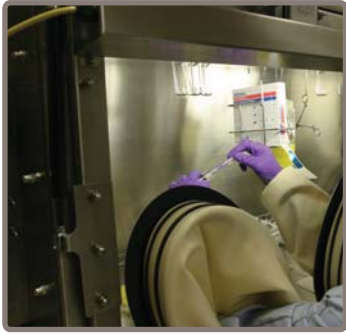
COMPOUNDING ASEPTIC CONTAINMENT ISOLATOR
COMPOUNDING ASEPTIC ISOLATOR



The LFGI Series provides either positive or negative pressure HEPA filtered unidirectional (laminar) airflow for patient, personnel, and product protection. The unit can be configured for positive (non-hazardous) or negative (hazardous) pressure to comply with USP <797> and NIOSH recommendations.

FEATURES

- 100% Stainless Steel Construction
- Meets Requirements for USP <797> Compliance



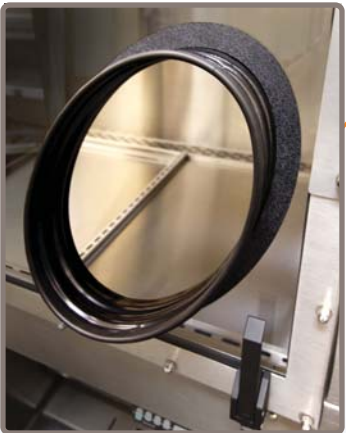
External Fluorescent Lighting



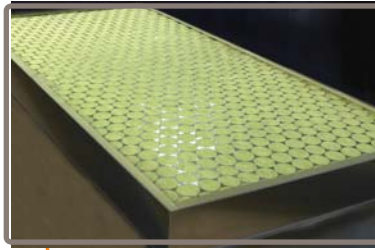
1" Stainless Steel Adjustable I.V. Bar



316 Stainless Steel Removable Sliding Work Trays for Easy Cleaning



Anthropometrically Correct Gloveports that have a 3" Armrest for an Increased Range of Movement



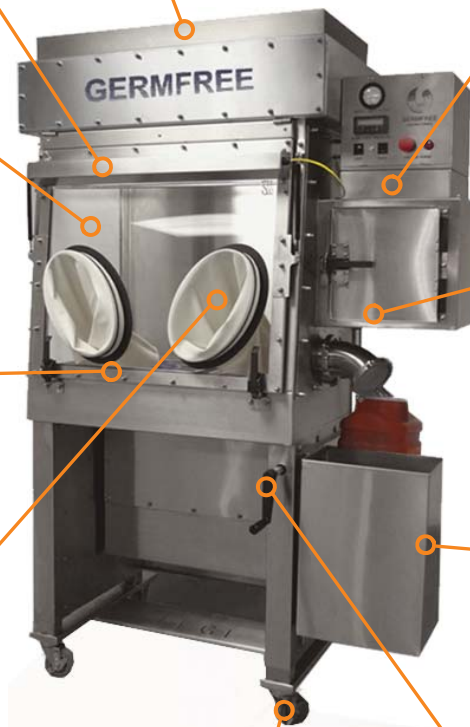
Prefilter Increases the Life of Front Loading HEPA Filters



Timed HEPA Filtration Purge System Antechamber can be Located on the Right, Left, or Both Sides



Sliding Work Tray in Antechamber



Ergonomic Placement of Sharps and Waste Tubes with Adjustable Shelf to Accommodate Different Sized Sharps Containers



Cleanroom Grade Locking Casters



Hydraulic Assist Integrated Stand with a 10" Height Adjustment

- Unidirectional (Laminar) Airflow System Maintains ISO CLASS 5 / CLASS 100 Air Quality Under Dynamic Conditions

SPECIFICATIONS

Performance Data:

The Laminar Flow Glovebox/Isolator (LFGI) provides the ultimate in both product and operator protection. The LFGI functions as a Glovebox while operating under negative pressure to meet NIOSH recommendations and as an Isolator under positive pressure to meet USP <797> regulations. HEPA filtered unidirectional (laminar) airflow bathes the work area to protect the product from contamination and removes any generated particulates. The operator is provided a complete barrier from materials being manipulated in the work area. The LFGI Series of barrier isolators meet or exceed ISO Class 5 / Class 100 air quality. Each LFGI, before shipping, undergoes rigorous physical testing to assure the unit meets performance requirements. It is required that independent certification be performed before use.

General Information:

All surfaces are constructed from stainless steel to provide exceptional durability and strength. Work trays slide over one another and are removable to facilitate easy clean up under the work deck. The large acrylic viewing panel is encased in a stainless steel frame and is at an angle to reduce glare and operator strain. Also, the viewing panel is top hinged and self supporting for easy access to the work area for cleaning and equipment ingress. Straight sides and back maximize work area to accommodate the many types and shapes of pharmacy equipment and compounders. Manual or programmable electric hydraulic assist height adjusting stand offers a full 10" range variance allowing operators to sit or stand comfortably for extended time periods. A solid state variable motor control extends the life of the HEPA filter.

Antechamber:

Airlock maintains complete environmental separation between work area and ambient conditions. HEPA filtered purge of trapped airlock air eliminates cross contamination between the work area and the room during both material ingress and egress.

Waste Removal:

Trash tube is a 4" diameter tube, flanged for waste bag/container connection. Sharps tube is a straight 2 1/2" diameter tube to facilitate quick drop of the largest syringes. Both tubes are provided with an easily removable seal/stopper to maintain work area containment.

Configuration Options:

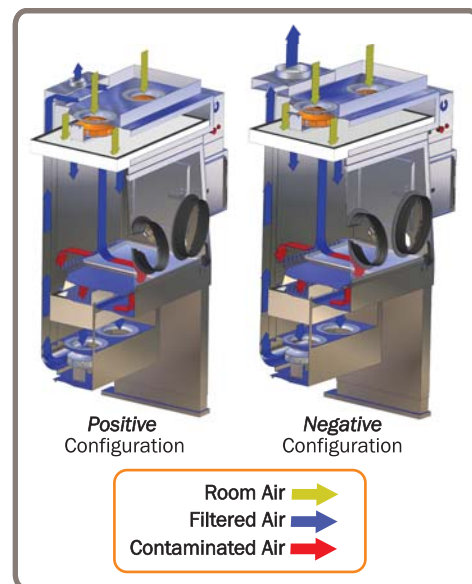
Overall work area pressure can be either positive or negative and can be altered in place by a certifier. Antechamber and waste and sharps tubes can be installed on the right, left, or both sides of the unit.

Filtration:

Full framed minipleat HEPA filter 100% of the inlet and exhaust air supplied to the work area and the antechamber. HEPA filters are front loading for easy replacement by a certifier.

Exhaust:

Clean air plenum is external to the work area. The plenum is constructed to allow for optional outside venting of exhaust air. Venting is not required for operation, though it is recommended for hazardous applications.



Equipment Specifications:

Overall Dimensions:

LFGI-3USP: 54" W (39" W at base) x 32" D x 80" H
LFGI-4USP: 66" W (50" W at base) x 32" D x 80" H
LFGI-6USP: 90" W (74" W at base) x 32" D x 80" H

Sealed two-door airlock:

(16" W x 13 1/2" D x 14 1/4" H)

Work Area Dimensions:

LFGI-3USP: 34 1/2" W x 24 1/2" D x 29" H
LFGI-4USP: 46 1/2" W x 24 1/2" D x 29" H
LFGI-6USP: 70 1/2" W x 24 1/2" D x 29" H

ACCESSORIES



Cleaning Handle with Pivoting Head
Lint Free Mop Heads



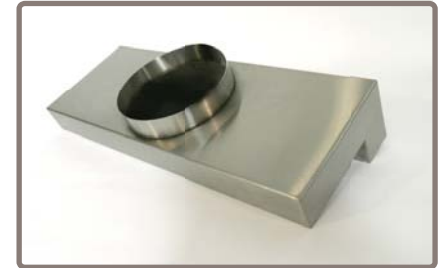
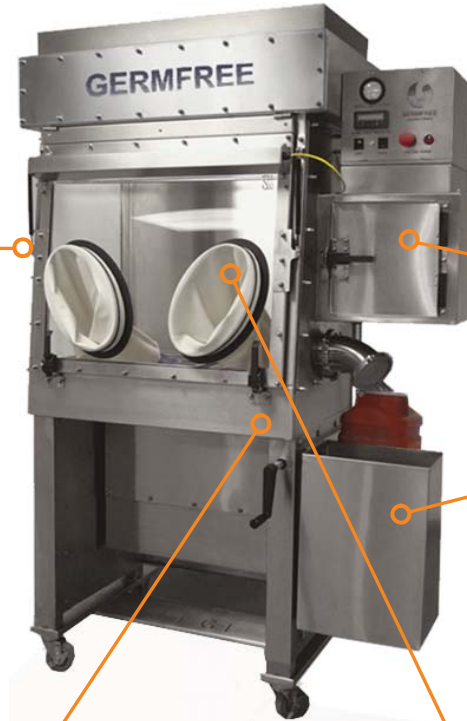
Sealed Data Port Passage



Stopcock for Air, Gas or Vacuum



Additional All Stainless Steel Airlock
and Sharps and Waste Tubes



Exhaust Transition Piece



Stainless 9" x 14"
Garbage Can



Window for Airlock Door



UV Light



Programmable Electrical Hydraulic Height Adjustment



Additional Pair of Smooth Sleeves



Seismic Anchors



11 Aviator Way, Ormond Beach, FL 32174 • 800-888-5357 Phone • 386-677-1114 Fax • www.Germfree.com

**LFGI SERIES
LAMINAR FLOW GLOVEBOX / ISOLATOR
COMPOUNDING ASEPTIC ISOLATOR (CAI)
COMPOUNDING ASEPTIC CONTAINMENT ISOLATOR (CACI)**

SECTION I. PERFORMANCE DATA

The Laminar Flow Glovebox/Isolator (LFGI) provides the ultimate in both product and operator protection. The LFGI functions as a Glovebox while operating under negative pressure to meet NIOSH recommendations and as an Isolator under positive pressure to meet USP <797> regulations. HEPA filtered unidirectional (laminar) air bathes the work area to protect the product from contamination and removes any particulate generated by sample manipulation. The operator is provided a complete barrier from materials being manipulated in the work area. The LFGI Series of barrier isolators meet or exceed ISO 14644-1 Class 5 air quality. Each LFGI, before shipping, undergoes rigorous physical testing to assure the unit meets performance requirements as validated. It is required that independent certification be performed before use. UL Listing # 61010-1.

SECTION II. EQUIPMENT SPECIFICATIONS

-Overall Dimensions:

	LFGI-3USP	LFGI-4USP	LFGI-6USP	LFGI-6USP (Dual Airlocks)
Width	54" (137.16 cm)	66" (167.64 cm)	90" (228.6 cm)	106" (269.24 cm)
Depth	32" (81.28 cm)	32" (81.28 cm)	32" (81.28 cm)	32" (81.28 cm)
Height	80" (203.2 cm)	80" (203.2 cm)	80" (203.2 cm)	80" (203.2 cm)

-Work Area Dimensions:

	LFGI-3USP	LFGI-4USP	LFGI-6USP	LFGI-6USP (Dual Airlocks)
Width	34 ½" (87.63 cm)	46 ½" (118.11 cm)	70 ½" (179.07 cm)	70 ½" (179.07 cm)
Depth	24 ½" (62.23 cm)	24 ½" (62.23 cm)	24 ½" (62.23 cm)	24 ½" (62.23 cm)
Height	29" (73.66 cm)	29" (73.66 cm)	29" (73.66 cm)	29" (73.66 cm)

- Designed to fit through standard door openings and elevators.
- All stainless steel construction both inside and out with a pharmaceutical grade finish.
- 316L Stainless steel work trays slide over one another and are removable to facilitate easy clean up under the work deck.
- All viewing panels are stainless steel framed Acrylic
- Front viewing panel is top hinged and self supporting for easy access to the work area for cleaning and equipment ingress.
- All filter diffuser / guard panels are removable for easy cleaning.
- Straight sides and back maximize work area to accommodate the many types and shapes of pharmacy equipment and compounds.
- All corners in work area, antechamber and work surface are easily reached and cleaned.
- Adjustable I.V. Bar with 12 Hooks
- Twenty-four (24) month standard Warranty on workmanship and parts.
- Operator/User Manual

Antechamber-

- Sealed two-door airlock (16" W x 13 ½" D x 14 ¼" H) maintains complete environmental separation between work area and ambient conditions.
- HEPA filtered purge of trapped airlock air eliminates cross contamination between the work area and the room during both material ingress and egress.

Waste Removal-

- Trash tube is a 4" diameter tube, flanged for waste bag/container connection and provided with an easily removable seal/stopper to maintain work area containment. (Stainless trash can is available)
- Sharps tube is a straight 2 ½" diameter tube to facilitate quick drop of the largest syringes and provided with an easily removable seal/stopper to maintain work area containment.
- Fully adjustable sharps container shelf accommodates most commercially available wide mouth or hinged top sharps collectors. (Examples BD Part # 305610 and 305491)

Safety-

- Lock-out handle requiring key for access to work area.
- Digital pressure readout with low pressure alarm for work area.
- Inward/Outward face velocity is 95-100 linear feet per minute at gloveport opening, to protect operator/product during massive breach of containment.
- Glove changes can be made without breaking containment.
- Locking casters are standard, seismic anchors are available.

Ergonomics-

- Hydraulic assist height adjusting stand offers a full 10" range variance allowing operators to sit or stand comfortably for extended time periods.
- Stainless steel sliding tray inside the airlock pulls into the work area eliminating reaching strains.
- Two part sleeve/glove system allows the use of most types and sizes of commercially available gloves for better dexterity and tactility.
- Extra large oval gloveports are placed with bottoms together to provide an anthropometrically correct configuration that accommodates a wide range of body types and increases range of movement.
- Gloveports have a 3" arm rest to reduce operator fatigue.
- Large viewing panel is at an angle to reduce glare and operator strain.
- Integrated foot rest.

Configuration Options-

- Overall work area pressure can be either positive or negative and can be altered in-place by a certifier.
- Antechamber can be left or right handed or can be installed on both sides.
- Waste and sharps removal tubes can be left or right handed or can be installed on both sides.
- Three available exhaust options that can be factory set or changed by a certifier in-place.

Filtration-

- Full framed standard size minipleat HEPA's filter 100% of inlet and exhaust air from both the work area and the antechamber to provide a fully contained environment.
- HEPA filters are full coverage and front loading for easy replacement by a certifier.
- A Prefilter extends the life of the work area supply HEPA filter and can be replaced without tools.

Electrical-

- High capacity motor/blower systems with speed control to extend HEPA filters life.
- Ten foot hospital grade power cord with molded grounded plug.
- Sealed outlet in work area.
- Separate lighted power ON/OFF indicator switches for blower and lighting.
- High efficiency, standard sized fluorescent lights are externally mounted to minimize heat build-up.
- Voltage = 115 Volt, 60 Hz (220/50-60 Hz also available).
- Amperage rating- 15



Exhaust-

- Clean air plenum is external to the work area.
- Constructed to allow for optional outside venting of exhaust air.
- Constructed to allow for 2 exhaust options that can be factory set or changed by a certifier in-place.
- Venting is not required for operation but is optional.

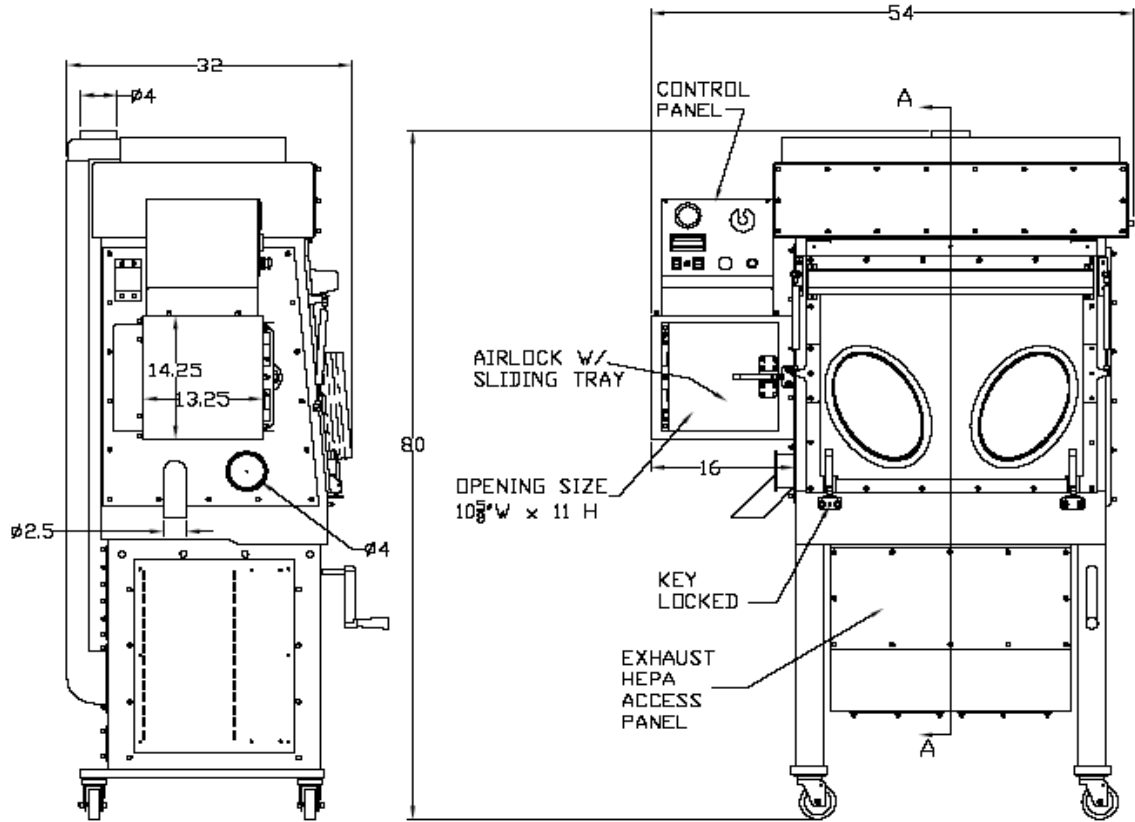
	LFGI-3USP	LFGI-4USP	LFGI-6USP	LFGI-6USP (Dual Airlocks)
Exhaust Static Total Exhaust	Up to 2 inches w.c. (depending on configuration)	Up to 2 inches w.c. (depending on configuration)	Up to 2 inches w.c. (depending on configuration)	Up to 2 inches w.c. (depending on configuration)
Exhaust Connection Total Exhaust CFM	300 8" OD Flexible duct	400 8" OD Flexible duct	600 8" OD Flexible duct	600 8" OD Flexible duct
Voltage/Phase	115/1	115/1	115/1	115/1
Average Running Amps	6	6	7	7
Weight uncrated	525 lbs (238.14 kg)	625 lbs (283.5 kg)	825 lbs (374.21 kg)	975 lbs (442.25 kg)
Shipping Weight	700 lbs (317.51 kg)	950 lbs (430.91 kg)	1200 lbs (544.31 kg)	1350 lbs (612.35 kg)

SECTION III. OPTIONAL EQUIPMENT AND ACCESSORIES-
(CONSULT YOUR SALESPERSON FOR PRICING)

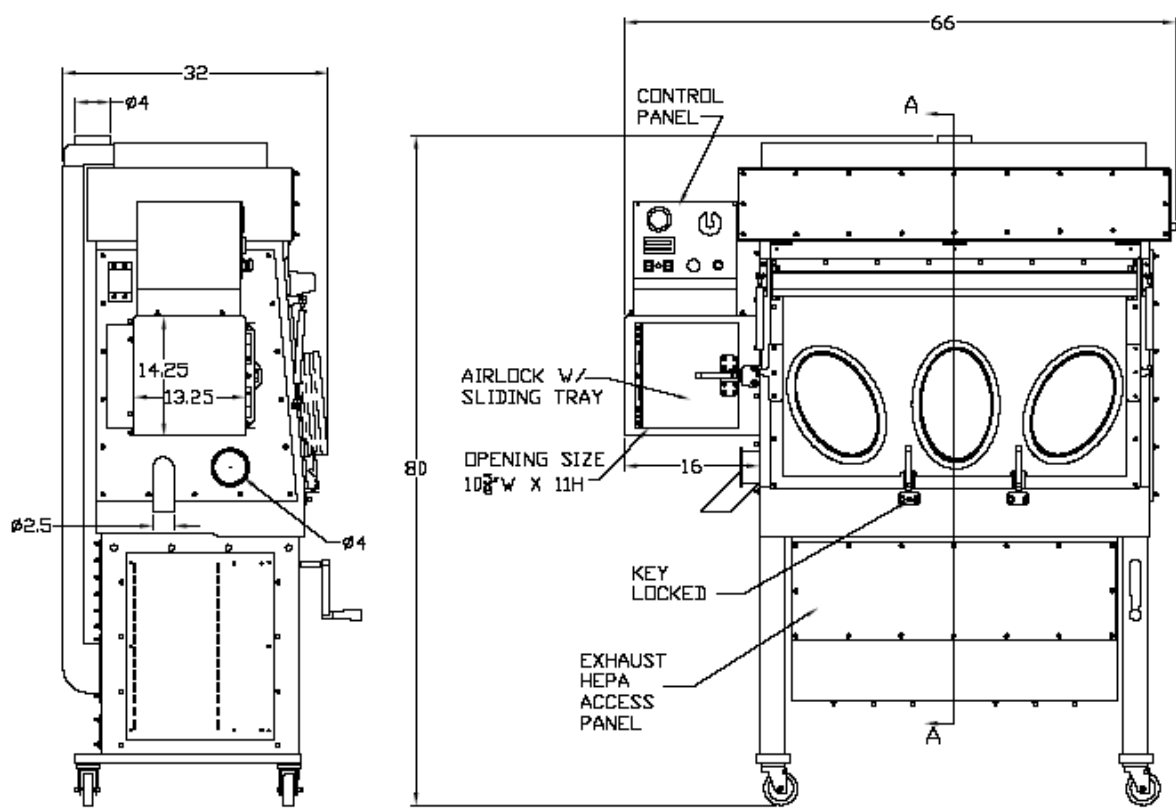
LFGI-A33B	Two-Part Butady/Hypalon Sleeves	LFGI-A83	Stainless Steel Garbage Can (9" x 14")
LFGI-A33TGOS	3 Groove Ring for Two-Part Glove/Sleeve with 4 O-Rings		(attaches to side of unit to catch waste from discharge tubes)
LFGI-A12x	Exhaust Transition Piece	LFGI-A85S	Stainless Steel Cleaning Handle
LFGI-A51D	Sealed Port in Side Panel for passage of data cables.	LFGI-A85M	Lint Free Cleaning Mop Heads (Pkg 4)
LFGI-A80x	Ergonomic Task Chair with Anti-Bacterial, Anti-Microbial Vinyl Covering Available in 5 colors: Black, Charcoal, Navy, Teal or Wine	LFGI-A8E	Electrical Height Adjustment
		LFGI-ADVD	Operator Training DVD
LFGI-A33GRX	GRx Rapid Exchange Glove System	LFGI-SEISMIC	Seismic Anchors, set of 2
LFGI-A24	Additional Pair of Stainless Steel Discharge tubes with seals	LFGI-TCC	In-Service Training and Set Up by factory Representative and Extended Warranty Program.
LFGI-A402C	Additional 2 Door HEPA Purge Stainless Steel Airlock with Sliding Tray -adds 16" (40.64 cm) to overall width of unit		Upgrade of original warranty coverage to include labor cost and (1) additional year of extended warranty covering including parts and labor. Also includes (1) Isolator Training DVD, (1) Stainless Steel Cleaning Handle and (24) cleaning mop heads, (2) pairs of smooth Butady/ Hypalon isolator sleeves, (3) cans of Stainless steel exterior shine, (12) pre-filters

SECTION IV. UNIT DIAGRAMS

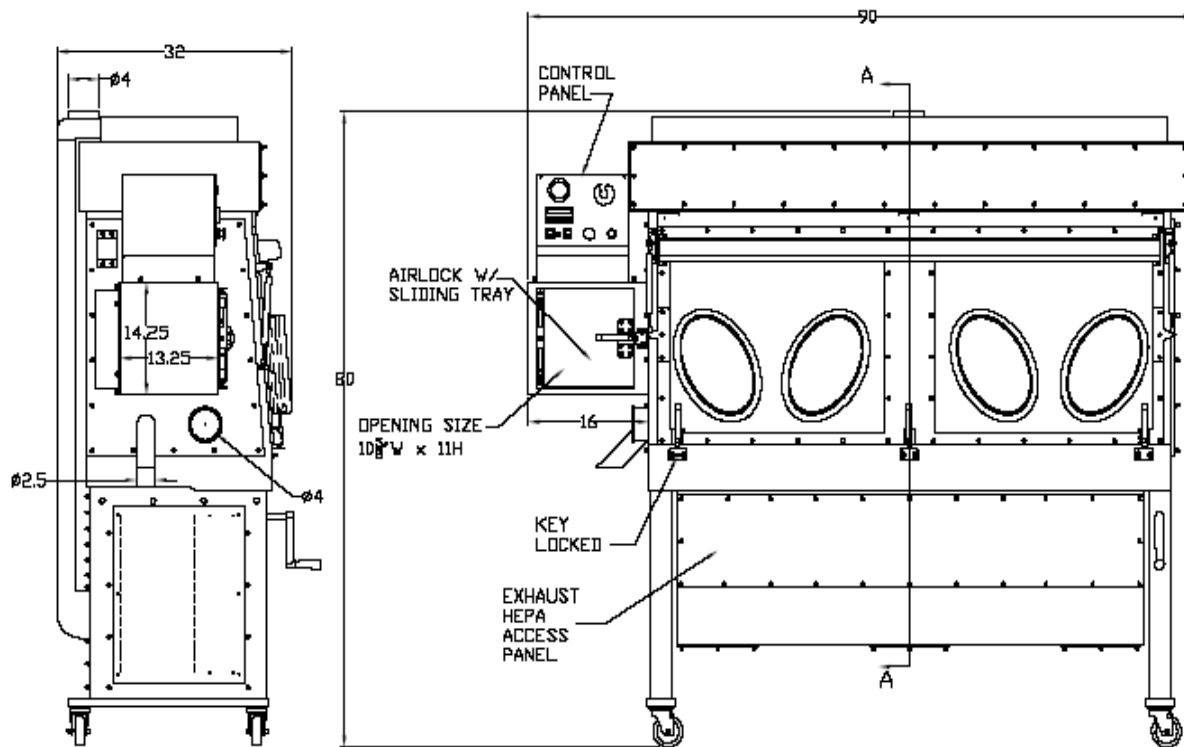
LFGI-3USP



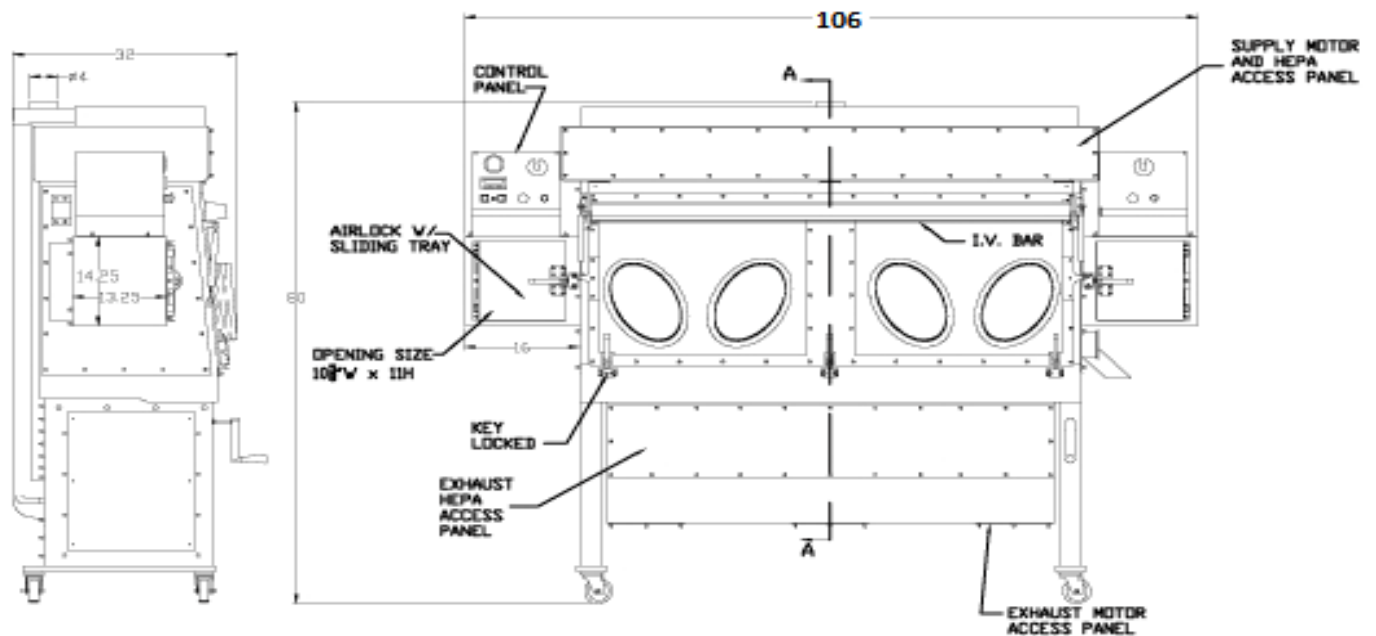
LFGI-4USP



LFGI-6USP



LFGI-6USP DUAL



GERMFREE 