



Company: The Whalen Company
Project Name: 18.13 SLC PET Scanner FCU ,Salt Lake City ,Utah

Proposal: 85827
Date: 03-06-2019

Fan Coils Schedule

Line #	Tag	Familv	Cab	Size	CFM	ESP	Motor Tvne	HP	Spec	Total FLA	C-Rws	Cool-EDB	Cool-EWB	Cool-Fluid	Cool-Temp	Total BTU	Sensible BTU	Cool-LDB	Cool-LWB	Cool-LWT	Cool-GPM	Cool-Water PD	KW	H-Rws	Heat-EDB	Heat-Fluid	Heat-Temp	Total BTU	Heat-LDB	Heat-LWT	Heat-GPM	Heat-Water PD
1	FCU-1	HP Horizontal	HPEF	006	559	0.25	Standard	1/6	120/1/60	2.8	6	80.00	67.00	Water	45.00	19.536	13.580	53.2	53.2	55.0	3.9	4.1	None	0	0.0	None	0.0	na	na	na	na	na



Company: The Whalen Company
Project Name: 18.13 SLC PET Scanner FCU ,Salt Lake City ,Utah

Proposal: 85827
Date: 03-06-2019

Fan Coils Schedule

Supplemental Data

Line #	Tao	UOM	Mot Cnt	BHP	Min HP	RPM	FLA	MCA	MOP	Motor Speed	Motor Watts	Velocity	Altitude	Fins Per In	Total MCA	Total MOP	C-CKT	EDP	Cool-Delta T	Cool-% Glycol	Refrigerant	SST	H-CKT	Heat-Delta T	Heat-% Glycol	Heat-Flow	Heat-Condensate	Elec. Heat BTU	Elec. Heat FLA	Elec. Heat MCA	Elec. Heat MOP	Shipping Wt	Operating Wt	User Approval
1	FCU-1	Standard	1	0.0	na	0.0	2.8	3.5	15.0	High Speed	336	459	4.700.00	12	3.5	15.0	3	61.6	10.0	0	None	0.0	0	0.0	0	na	na	na	0.0	0.0	15.0	192	153	None



The Whalen Company

Company: The Whalen Company
Project Name: 18.13 SLC PET Scanner FCU ,Salt Lake City ,Utah

Proposal: 85827
Date: 03-06-2019

Performance Summary - Unit 1 , FCU-1



85827-1

Horizontal Fan Coil Cabinet Exposed (HPEF) - 006, 120/1/60, 6/0 Coil, Right Hand, 6R3C Cool (HPEF006)

"The Horizontal Deluxe fan coil is designed for horizontal exposed ceiling-mounted applications where high static performance is required. The Deluxe is our basic unit housed in a fully-cased cabinet intended for ""free-blow"" exposed ceiling mounting. "

Performance Calculations are at an altitude of 4,700.00 feet

Fan Performance

Motor Voltage: 120/1/60 Motor Type: Standard

External Static: 0.25 InWC

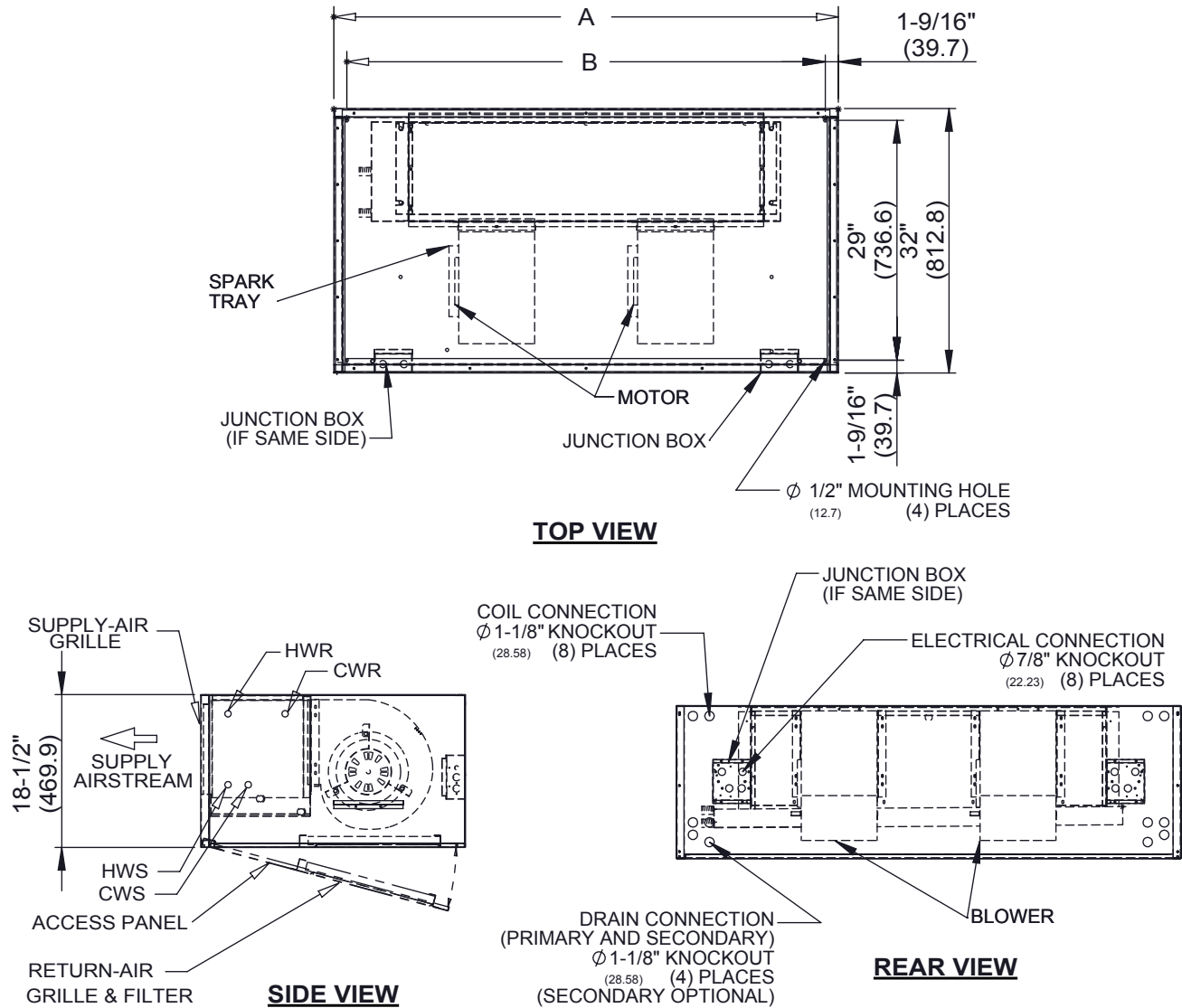
Airflow at High Speed: 559 cfm

Cooling Coil Performance - 6 rows, 3 circuit, 12 fins/inch

Entering Dry Bulb:	80.00 °F	Leaving Dry Bulb:	53.2 °F
Entering Wet Bulb:	67.00 °F	Leaving Wet Bulb:	53.2 °F
Fluid Type:	Water	Flow Rate:	3.9 GPM
Entering Fluid Temp:	45.00 °F	Leaving Fluid Temp:	55.0 °F
EAT Dew Point:	61.6 °F	Fluid Pressure Drop:	4.1 FtWC

Total Cooling Capacity: 19,536 BTUH

Sensible Cooling Capacity: 13,580 BTUH



RIGHT HAND SHOWN ^{IN}_(MM)

Model	CFM	A	B	Supply Air Grille	Return Air Grille	Filter Size
006	600	33	29-7/8	12 X 14	16 X 20	(1) 17 X 20 X 1
MM		838.20	758.83	304.80 X 355.60	406.40 X 508.20	
008	800	37	33-7/8	12 X 18	16 X 20	(1) 17 X 20 X 1
MM		939.80	860.43	304.80 X 457.20	406.40 X 508.20	
010	1000	43	39-7/8	12 X 24	16 X 25	(1) 17 X 25 X 1
MM		1092.20	1012.83	304.80 X 609.60	406.40 X 635.00	
012	1200	49	45-7/8	12 X 30	16 X 25	(1) 17 X 25 X 1
MM		1244.60	1165.23	304.80 X 762.00	406.40 X 635.00	
015	1500	55	51-7/8	12 X 36	(2) 16 X 20	(2) 17 X 20 X 1
MM		1397	1317.63	304.80 X 914.40	406.40 X 508.20	
018	1800	61	57-7/8	12 X 42	(2) 16 X 20	(2) 17 X 20 X 1
MM		1549.40	1470.03	304.80 X 1066.80	406.40 X 508.20	
022	2200	67	63-7/8	12 X 48	(2) 16 X 25	(2) 17 X 25 X 1
MM		1701.80	1622.43	304.80 X 1219.20	406.40 X 635.00	

Detail Report

Report information		Project Information	
Report generated date	04-22-19	Project name	18.13 SLC Humidifier
Systems/tags included in this report:	H-1	Project description	
		Project status	Open
		Project phase	Design
		Unit of measure	Inch-pound

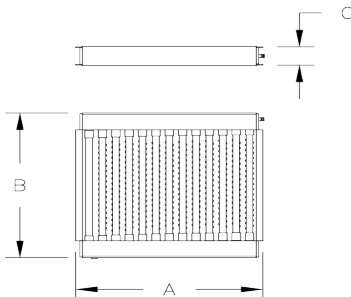
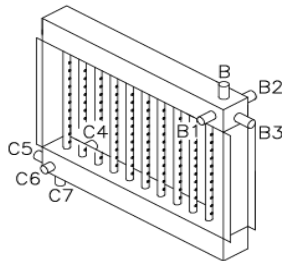
Project name: 18.13 SLC Humidifier
System/tag H-1
System images

<p>Vapormist humidifier</p> 	<p>Ultra-sorb Model LV steam dispersion</p> 	<p>Vapor-logic controller</p> 
--	--	--

Steam generator dimensions and clearances

An isometric line drawing of a rectangular steam generator. The drawing shows the top, front-left, and front-right faces. Dimensions are indicated with arrows and letters: 'C' is the length of the top face; 'B' is the width of the top face; 'A' is the height of the front face; 'D' is the depth of the front face; 'E' is the clearance between the top of the unit and a horizontal line above it; 'F' is the clearance between the top of the unit and a vertical line above it; 'H' is the clearance between the front face and a vertical line to its left; and 'I' is the clearance between the front face and a vertical line below it.

Dimensions (in.)			Clearances (in.)				
A	B	C	D	E	F	H	I
18.6	16.1	24.2	36	36	18	12	24

<p>Dispersion dimensions</p> 	<table> <tr> <th colspan="3">Dimensions (in.)</th></tr> <tr> <th>A</th><th>B</th><th>C</th></tr> <tr> <td>39.0</td><td>29.0</td><td>5.0</td></tr> </table>	Dimensions (in.)			A	B	C	39.0	29.0	5.0	<p>Ultra-sorb connections</p> 
Dimensions (in.)											
A	B	C									
39.0	29.0	5.0									

Detail Report

Project ID: 57120

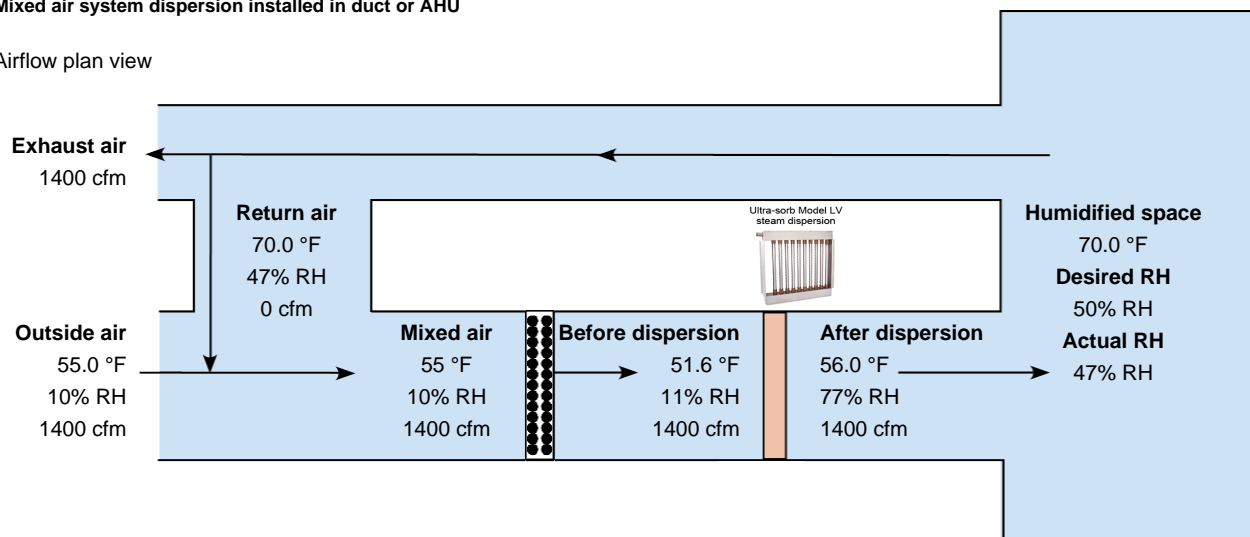
Project name: 18.13 SLC Humidifier

System/tag H-1

System view

Mixed air system dispersion installed in duct or AHU

Airflow plan view



Project name: 18.13 SLC Humidifier

System/tag H-1, continued

Application

System Quantity	1
System Location	United States
Elevation at project site (ft)	4250.0
Ventilation system type	Mixed Air System, Dispersion Installed In Duct Or AHU
Outside air dry bulb temperature (°F)	55.0
Outside air moisture content (%RH)	10.0
Outside air intake rate	Constant
Outside air intake (%)	100.0
Total air volume (cfm)	1400.0
Desired air dry bulb temperature (°F) in humidified space	70.0
Desired air moisture content (% RH) in humidified space	50.0
Actual moisture content (% RH) in humidified space	47.0
Non-wetting distance (inches)	12
Calculated load	User-entered
Load (lbs/hr)	40.0
Load plus loss (lbs/hr)	43.36
Dispersion installation location	Duct
Airflow direction	Horizontal
Airflow pressure drop (inches w.c.)	0.006
Duct dry bulb temp before dispersion (°F)	51.6
Duct RH before dispersion (%)	11
Duct dry bulb temp after dispersion (°F)	56.0

Application, continued

Duct RH after dispersion (%)	77
Heat gain from steam (°F)	1.92
Heat gain from assembly (°F)	2.48
Steam dispersion	
Dispersion product	Ultra-sorb
Dispersion model	LV
Unit quantity	1
Header location	Outside Duct
Trap location	Outside Duct
Air movement	Through Dispersion Assembly
Available inside duct/AHU width (inches)	36.0
Available inside duct/AHU height (inches)	20.0
Duct/AHU wall thickness (inches)	0.0
Face width (inches)	36.0
Face height (inches)	20.0
Header diameter(inches)	3.0
Overall dimensions W x H x L (inches)	39.0 X 29.0 X 5.0
Air velocity (ft/min)	280.0
Tube diameter (inches)	1.5
Tube spacing on-center (inches)	3.0
Tube quantity	10
Enclosure material	Galvanized Steel
Header and tube material	304 Stainless Steel

Detail Report

Project name: 18.13 SLC Humidifier	
System/tag H-1, continued	
Steam dispersion, continued	
Dispersion same side piping	No
High-Efficiency Insulated Tubes	Yes
Ship unassembled	No
Seismic-certified	No
Operating weight (lbs)	81
Shipping weight (lbs)	105
Steam generation	
Generation product	Vapormist
Generation model	VM-16
Unit quantity	1
Unit capacity (lbs/hr)	48.0
Water type	Potable
Energy source	Electricity
Voltage (Vac)	208
Phase	3
Max Amps per unit(s)	44.4
Overall dimensions H x W x L (inches)	24 X 18 X 16
Operating weight (lbs)	139
Shipping weight (lbs)	93
Tank material	304 Stainless Steel
Enclosure	
End-of-season drain	Yes
Seismic certified humidifier	No
Notes	
Minimum water conductivity of 30 uS/cm	
Damage caused by chloride corrosion is not covered by your DriSteem warranty.	
Connections	
Steam generator outlet connection type	NPT
Steam generator outlet diameter (inches)	1.5
Steam supply inlet location	B3
Dispersion steam inlet connection type	NPT
Dispersion steam inlet diameter (inches)	1.5
Condensate outlet location on condensate header	C7
Steam hose length (ft)	0
Control	
Humidifier controller	Vapor-logic
Multiple-tank control	No
Operating mode	TP Modulation
Interoperability	None
Keypad/display	Mounted Permanently

Control, continued	
Keypad/display language	English
Keypad/display unit of measure	Inch-pound
Input signal type	Humidity Transmitter
Remote temperature sensor	No
Accessories	
Generation Condensate Pump	None
Dispersion Condensate pump	None
Generation Drane-kooler	Yes
Generation Drane-kooler mounting	Floor Stand
Dispersion Drane-kooler	Yes
Dispersion Drane-kooler mounting	Wall Mount
NEMA-1 safety switch	Yes
High-limit humidistat	None
Airflow proving switch	Electric Pressure
Humidity transmitter	None