

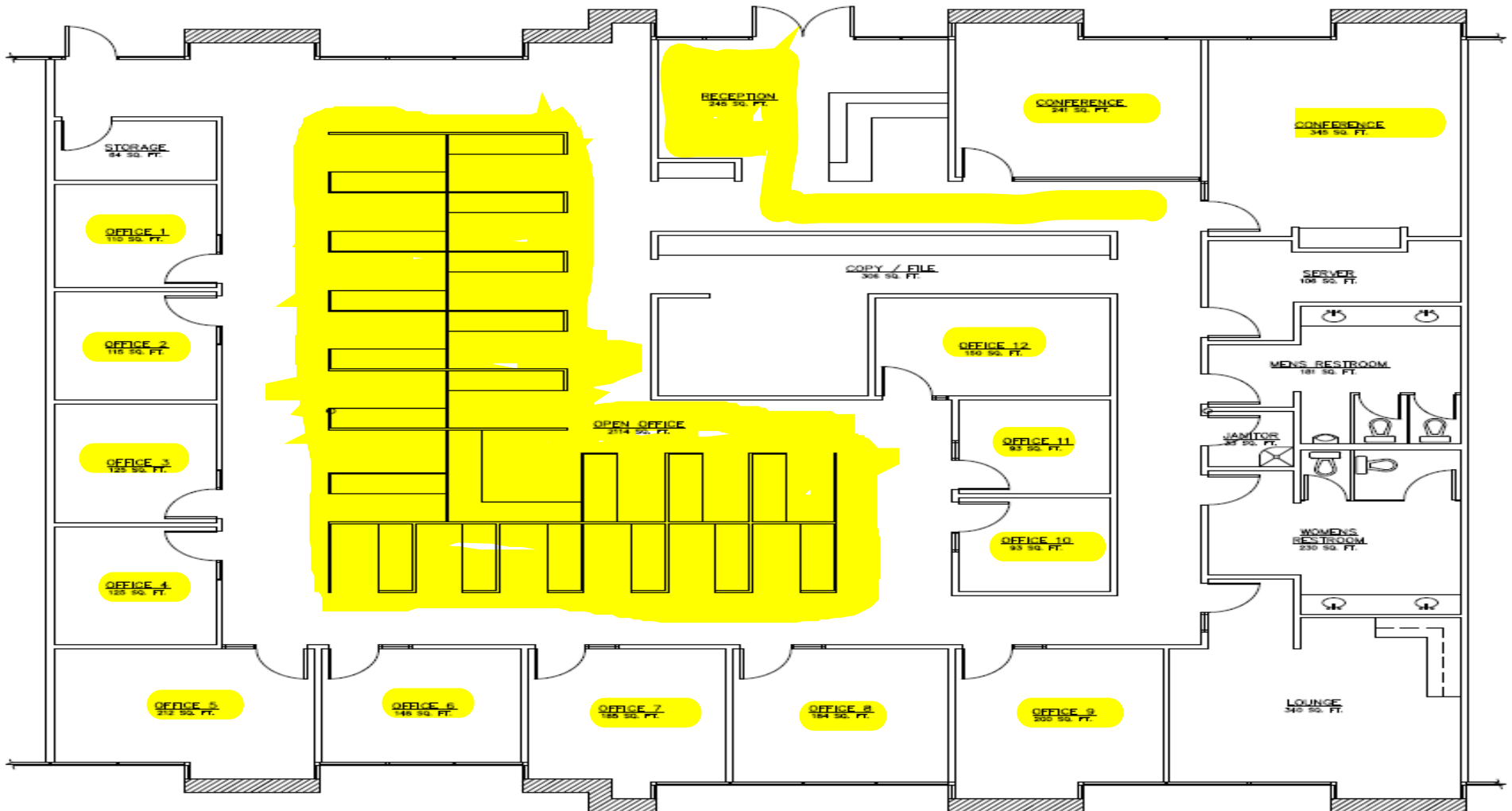
Sound Management Requirement Supply

29 August 2019

Network Contracting Office 22 Gilbert (701)

701-19-3-1815-0127

NCO-22 G MESA Location:



The floor plan of the 300th level includes the following rooms and areas:

- Top Row (Left to Right):** OFFICE 300.73, OFFICE 300.72, OFFICE 300.71, OFFICE 300.70, OFFICE 300.18, OFFICE 300.17, OFFICE 300.16, OFFICE 300.15, OFFICE 300.14, OFFICE 300.13, OFFICE 300.12, OFFICE 300.11, OFFICE 300.10, OFFICE 300.09, OFFICE 300.08.
- Left Column (Top to Bottom):** OFFICE 300.74, OFFICE 300.75.
- Central Area:** NOISE 300.23, COPY 300.32, WAITING 300.01, ADMIN 300.02, EQUIPMENT 300.03, CONFERENCE ROOM 300.04, CONFERENCE ROOM 300.05, BREAK ROOM 300.28, OFFICE 300.27, OFFICE 300.26, NOISE 300.30, NOISE 300.31, US-PAF, RECEPTION 300.06, RECEPTION 300.07, PAK, PAK.
- Bottom Row (Left to Right):** OFFICE 300.10, OFFICE 300.09, OFFICE 300.08, BREAK 300.07, OFFICE 300.06, OFFICE 300.05, OFFICE 300.04, OFFICE 300.03, OFFICE 300.02, OFFICE 300.01, RECEPTION 300.06, RECEPTION 300.07, PAK, PAK.
- Bottom Section (Left to Right):** REVIEWERS 25'7" X 18", MEDIUM TEAM OFFICE 300.07, REVIEWERS 19'11" X 18", SMALL TEAM OFFICE 300.05, REVIEWERS 29'8" X 18", LARGE TEAM OFFICE 300.02.
- Right Side:** OPEN OFFICE 300.08, OPEN OFFICE 300.07.

Yellow highlighted areas include a horizontal strip along the top, a vertical strip on the left, and a large area on the right side.