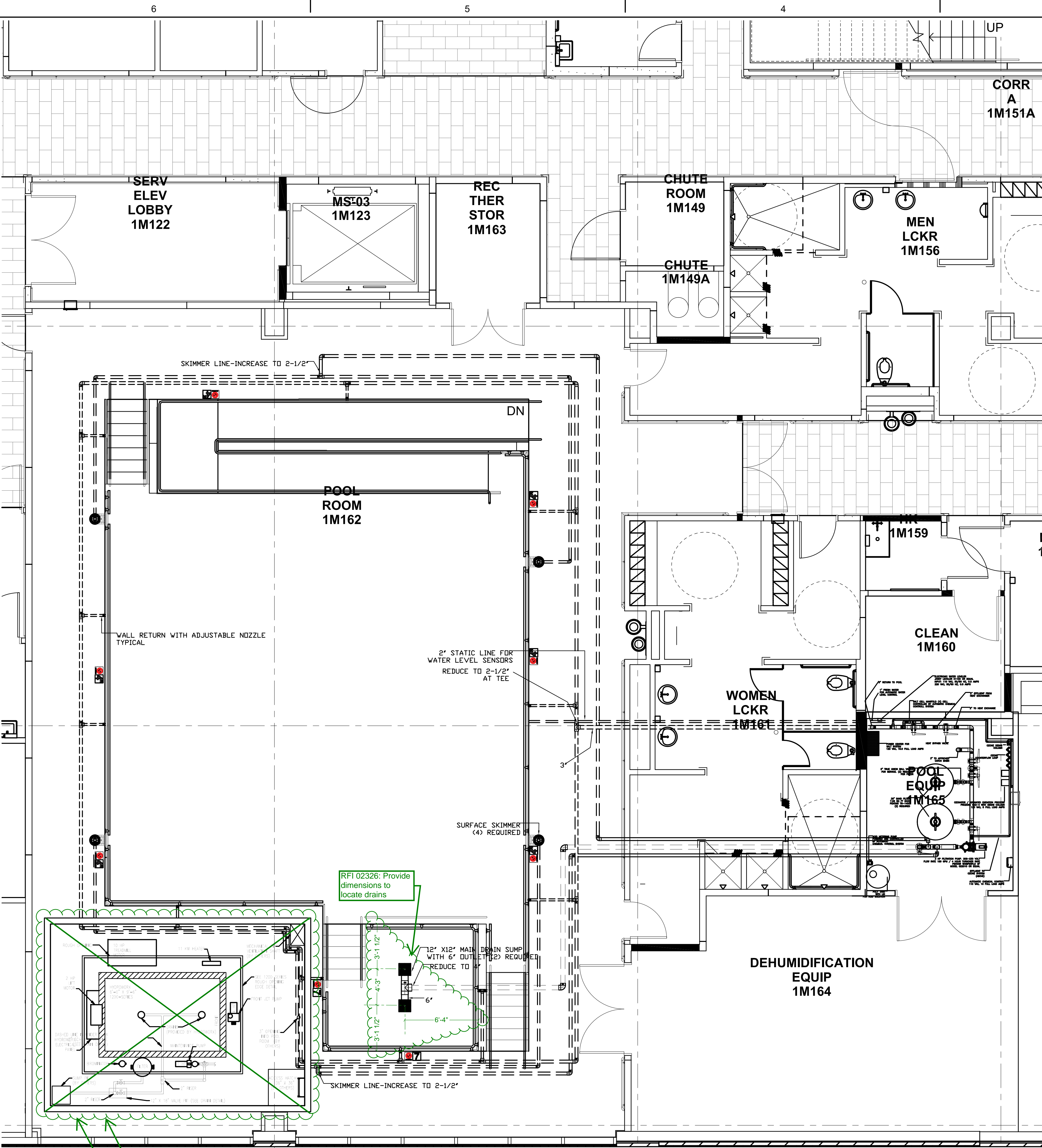


ONE INCH = FORTY FEET (1" = 40')  
ONE AND ONE HALF INCHES = ONE FOOT  
THREE INCHES = ONE FOOT  
THREE QUARTERS INCH = ONE FOOT  
ONE HALF INCH = ONE FOOT  
ONE QUARTER INCH = ONE FOOT  
ONE EIGHT INCH = ONE FOOT  
ONE SIXTEENTH INCH = ONE FOOT



POOL DATA	
POOL VOLUME	42,980 GALLONS
POOL TURNOVER RATE	3.8 HOURS
GPM	189
DESIGN FILTER AREA	14.12 SQUARE FEET

RETURN LINE	3"
MAIN DRAIN LINE	4"
SKIMMER LINES	2" - 2-1/2"

8" X 8" CERAMIC TILE  
WITH 6" NUMBERS



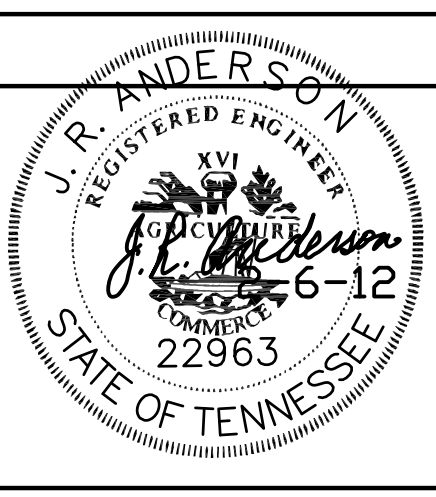
NO DIVING

4 FT

2 DEPTH MARKING TILE  
NTS

1 POOL PLUMBING AND EQUIPMENT  
SCALE: 1/4" = 1'-0"

CONSULTANTS:	
DESIGN ASSOCIATES / PARKING	
CODE CONSULTANTS, INC. / CODE CONSULTANT	
THE SEXTANT GROUP / AV & ACOUSTICAL	
HAMMER DESIGN ASSOCIATES / FOOD SERVICE	
PYBURN & ODOM / ABATEMENT	
TATA & HOWARD / TANK CONSULTANT	
I.S.C. GROUP, INC. / IRRIGATION	
DAN EUSER WATER ARCHITECTURE, INC. / WATER FEATURE	



ARCHITECT/ENGINEERS:	
studio <b>NOVA</b>	
SCHRENK & PETERSON CONSULTING ENGINEERS / CIVIL	
KORDA/ NEMETH ENGINEERING / STRUCTURAL	
BR+A CONSULTING ENGINEERS / MECH, ELECT, PLUMBING, LOW VOLTAGE	
ARCHITECTURAL ENGINEERING / PLUMBING	
SCALES ASSOCIATES / FIRE PROTECTION	
COMMUNICATIONS DESIGN GROUP / LOW VOLTAGE	

DRAWING TITLE	POOL EQUIPMENT FLOOR PLAN
APPROVED: PROJECT DIRECTOR	<i>Judd Anderson</i>

PROJECT TITLE	SLVHCS REPLACEMENT MEDICAL CENTER PROJECT
LOCATION	NEW ORLEANS, LOUISIANA
DATE	February 29, 2012
CHECKED	JRA
DRAWN	MWG

PROJECT NUMBER	BUILDING NUMBER
629-HS2-401	06
DOCUMENT SET PACKAGE	WP_08
DRAWING NUMBER	6PE101

OFFICE OF CONSTRUCTION AND FACILITIES MANAGEMENT
Department of Veterans Affairs