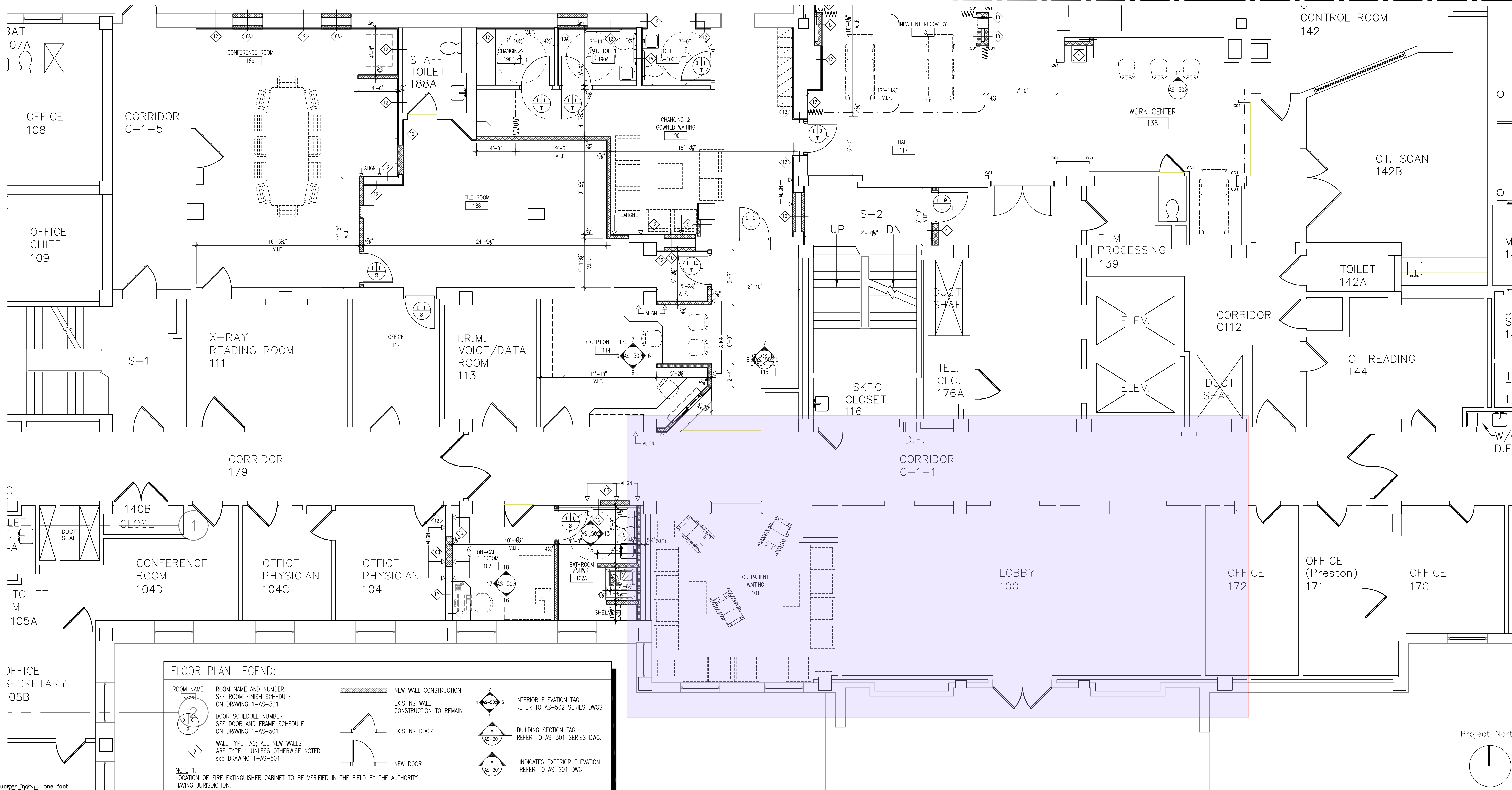


three inches = one foot
one and one half inches = one foot
one inch = one foot
three quarters inch = one foot
one half inch = one foot
three eighths inch = one foot
one quarter inch = one foot
one eighth inch = one foot

△ see Floor Plan 1-AS-105 △

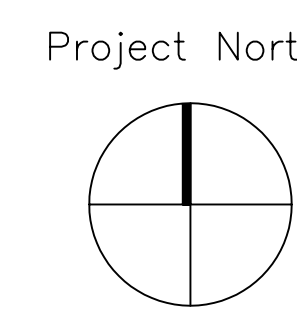
△ see Floor Plan 1-AS-106 △



FLOOR PLAN LEGEND:

ROOM NAME XXXX	ROOM NAME AND NUMBER SEE ROOM FINISH SCHEDULE ON DRAWING 1-AS-501	NEW WALL CONSTRUCTION	INTERIOR ELEVATION TAG REFER TO AS-502 SERIES DWGS.
DOOR SCHEDULE NUMBER SEE DOOR AND FRAME SCHEDULE ON DRAWING 1-AS-501	EXISTING WALL CONSTRUCTION TO REMAIN	EXISTING DOOR	BUILDING SECTION TAG REFER TO AS-501 SERIES DWG.
WALL TYPE TAG; ALL NEW WALLS ARE TYPE 1 UNLESS OTHERWISE NOTED, SEE DRAWING 1-AS-501	NEW DOOR		INDICATES EXTERIOR ELEVATION. REFER TO AS-201 DWG.

NOTE 1.
LOCATION OF FIRE EXTINGUISHER CABINET TO BE VERIFIED IN THE FIELD BY THE AUTHORITY
HAVING JURISDICTION.



FINAL SUBMISSION - JULY 31, 2009

CONSULTANTS:		ARCHITECT/ENGINEERS:		Drawing Title Enlarged Floor Plan	Project Title Imaging Center Replacement	Project Number 405-08-303
				Approved Project Director	Location White River Junction	Building Number 1
					Date July 31, 2009	Drawing Number 1-AS-107
					Checked RAM	Dwg. 37 of 127
					Drawn DZK	

