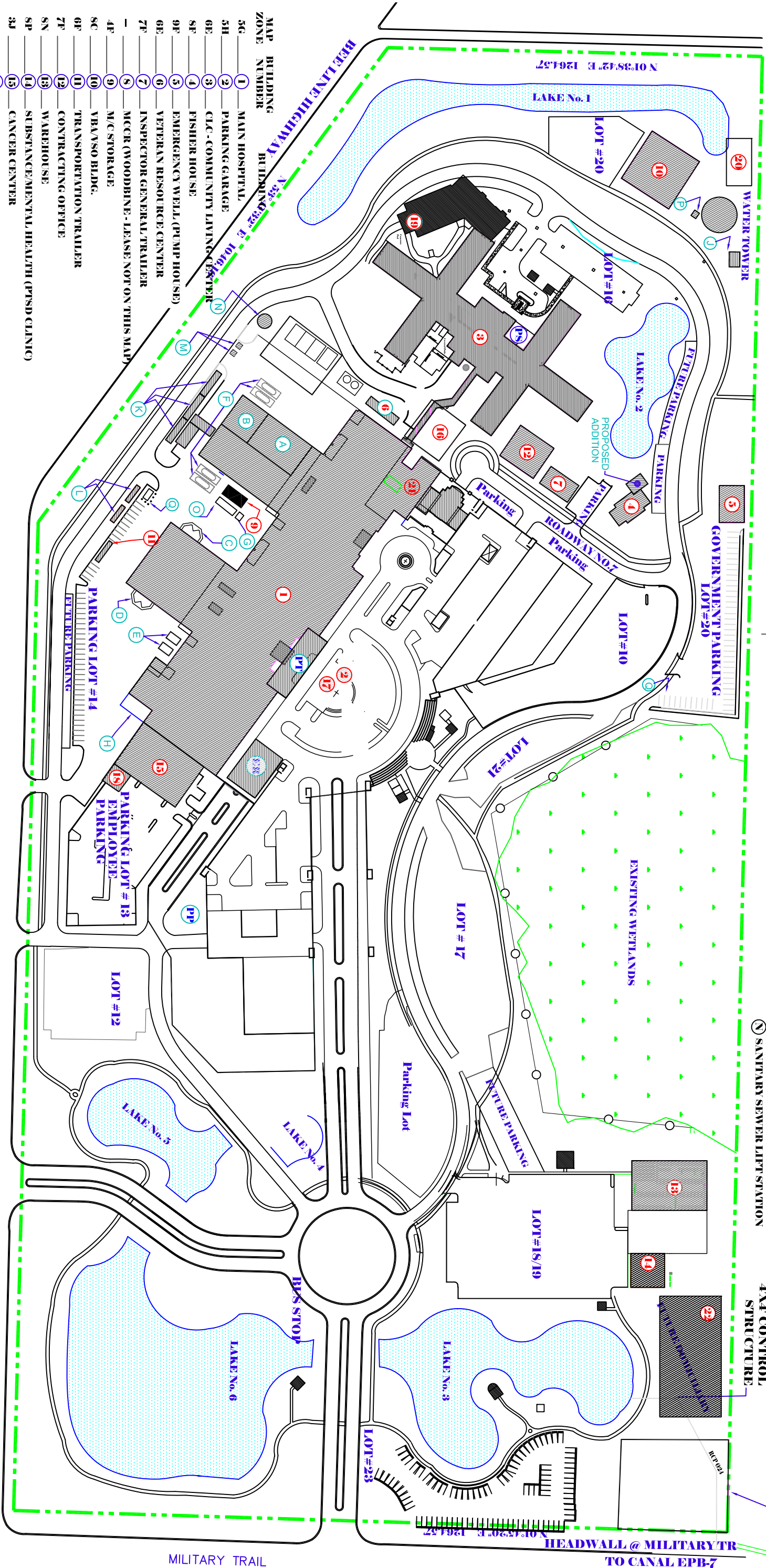


OTHER LETTER CODES

- PP PROPOSED CSI PROJECT: PET/CT BLDG (2500 SQFT)
ER ER EXPANSION PROJECT (6600 SQFT)
PT CSI PROJECT ENCLOSE 4TH FLOOR TERRACE (3200 SQFT)
PS PROPOSED SOLARIUM
H HOSPICE WING

BUILDING #1: VA MEDICAL CENTER

- Ⓐ SWITCHGEAR ROOM
Ⓑ EMERGENCY GENERATOR ROOM (4) 100gal DAYTANKS
Ⓒ CLEAN LAUNDRY DOCK LIFT
Ⓓ SOILED LAUNDRY DOCK LIFT
Ⓔ TRASH COMPACTORS
Ⓕ UNDERGROUND FUEL TANKS (2) 10,000 gal
Ⓖ USED COOKING OIL
Ⓗ DOCK WAREHOUSE LIFT
Ⓙ GAS TANK 500 gal & DIESEL/TANK 500 gal
Ⓚ ENGINE GENERATORS (3) 10,000 gal
Ⓛ FUEL TANKS (2) 12,000 gal
Ⓜ MISCELLANEOUS STORAGE SHEDS
Ⓝ SANITARY SEWER LIFT STATION
Ⓢ HAZARDOUS WASTE SHED
Ⓣ USED OIL
Ⓤ ES5 FUEL TANK 5000 Gallon
ENHANCED USED LEASE
FIRE SAFETY BUILDING



SITE PLAN

- MAP ZONE BUILDING BUILDING NUMBER
5G 1 MAIN HOSPITAL
5H 2 PARKING GARAGE
6E 3 C/LC - COMMUNITY LIVING CENTER
6F 4 FISHER HOUSE
9F 5 EMERGENCY WELL (PUMP HOUSE)
6E 6 VETERAN RESOURCE CENTER
7F 7 INSPECTOR GENERAL/ TRAILER
— 8 MCCR (WOODBINE -LEASE NOT ON THIS MAP)
4F 9 M/C STORAGE
8C 10 VBA/VS0 BLDG.
6F 11 TRANSPORTATION TRAILER
7F 12 CONTRACTING OFFICE
8N 13 WAREHOUSE
8P 14 SUBSTANCE/MENTAL HEALTH (PTSD CLINIC)
3J 15 CANCER CENTER
6F 16 MENTAL HEALTH OUTPATIENT (2500 SQFT CSI)
PROJECT MENTAL HEALTH/HOMELESS PROGRAM
5H 17 DECON (ATTUNNEL)
3J 18 PET/CT ADDITION
3J 19 HOSPICE
3J 20 MAINTENANCE BUILDING
5G 21 MRI
8P 22 DOMICILIARY