



ITEM:	
QTY:	1

THESE PLANS AND THE DESIGNS CONTAINED HEREIN ARE THE PROPERTY OF GREAT LAKES STAINLESS, INC., AND MAY NOT BE REPRODUCED OR USED BY ANYONE, EITHER ALL OR IN PART, WITHOUT FIRST SECURING OUR WRITTEN PERMISSION.

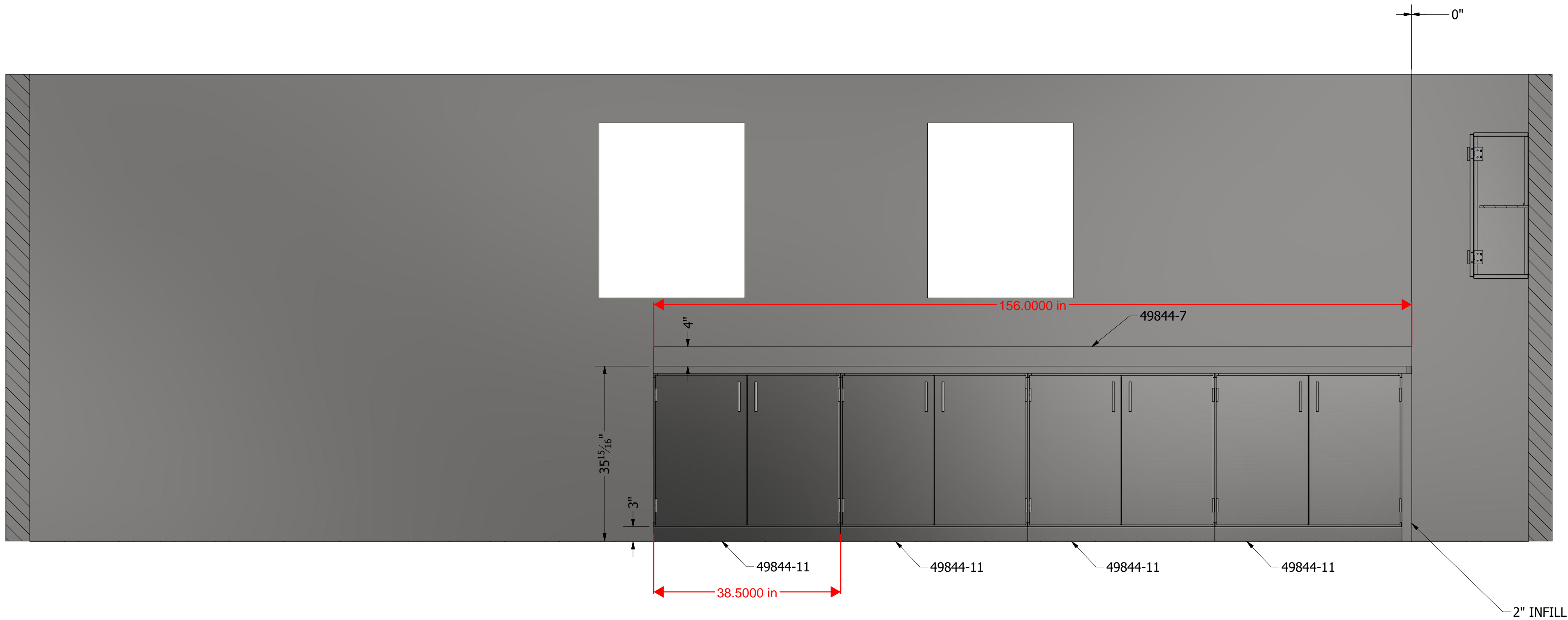
DRAWN RICK	 GREAT LAKES STAINLESS, INC. 1005 STATE ST. TRAVERSE CITY, MI 49686 PH: 231-942-7544 FAX: 231-942-5559 (202503 2009 CERTIFICATE NUMBER 2301)	 AWI QUALITY CERTIFICATION PROGRAM
PROJECT MANAGER:		
REVISIONS:	JOB NAME :PRESCOTT VA	JOB NUMBER: 49844
TOLERANCES UNLESS OTHERWISE STATED: .XXXX ±.0002 .XXX ±.005 .XX ±.010 FRACTIONAL ±1/8" ANGLES ±1/2°	CUSTOMER : DSI	ITEM#:
	SIZE D DWG NO	
	DATE: 2/5/2019	

SHEET

1

OF

5



SECTION A-A
SCALE 3/4" = 12"

49844-11
Custom Stainless Steel Lower Cabinet
38.5"Wx24"Dx34.5"T
- Solid Doors
- (1) Adjustable Shelf
- 3" Toe Kick
Note: 34.5" height is the toe kick +
cabinet body - with the 1.5" thick
counter top the
overall height will finish out to a typical
36" overall height

49844-7
Custom Stainless Steel Counter Top Going
Over Cabinets In Area Labeled "A"
- 156"Lx25"Dx1.5"Thick
- 16GA 304 #4 Brush Finish
- 4" Back Splash
- Will Come In (2) Pieces W/ Hairline Seam
In Middle
-Notched to fit 49844-8




THESE PLANS AND THE DESIGNS CONTAINED HEREIN ARE THE PROPERTY OF GREAT LAKES STAINLESS, INC., AND MAY NOT BE REPRODUCED OR USED BY ANYONE, EITHER ALL OR IN PART, WITHOUT FIRST SECURING OUR WRITTEN PERMISSION.			
DRAWN RICK	GREAT LAKES STAINLESS, INC. CROSS STREET CT. TRAVERS CITY MI 49880 PH: 231-942-7544 FAX: 231-942-5539 (202503 2009 CERTIFICATE NUMBER 2301)		AWI QUALITY CERTIFICATION PROGRAM
PROJECT MANAGER:	JOB NAME :PRESCOTT VA		JOB NUMBER: 49844
REVISIONS:	CUSTOMER : DSI		ITEM#:
TOLERANCES UNLESS OTHERWISE STATED: .XXXX ±.0002 .XXX ±.005 .XX ±.010 FRACTIONAL ±1/8" ANGLES ±1/2°	SIZE	DWG NO	
	D	49844 FLOOR PLAN	
	DATE:	2/5/2019	SHEET 2 OF 5

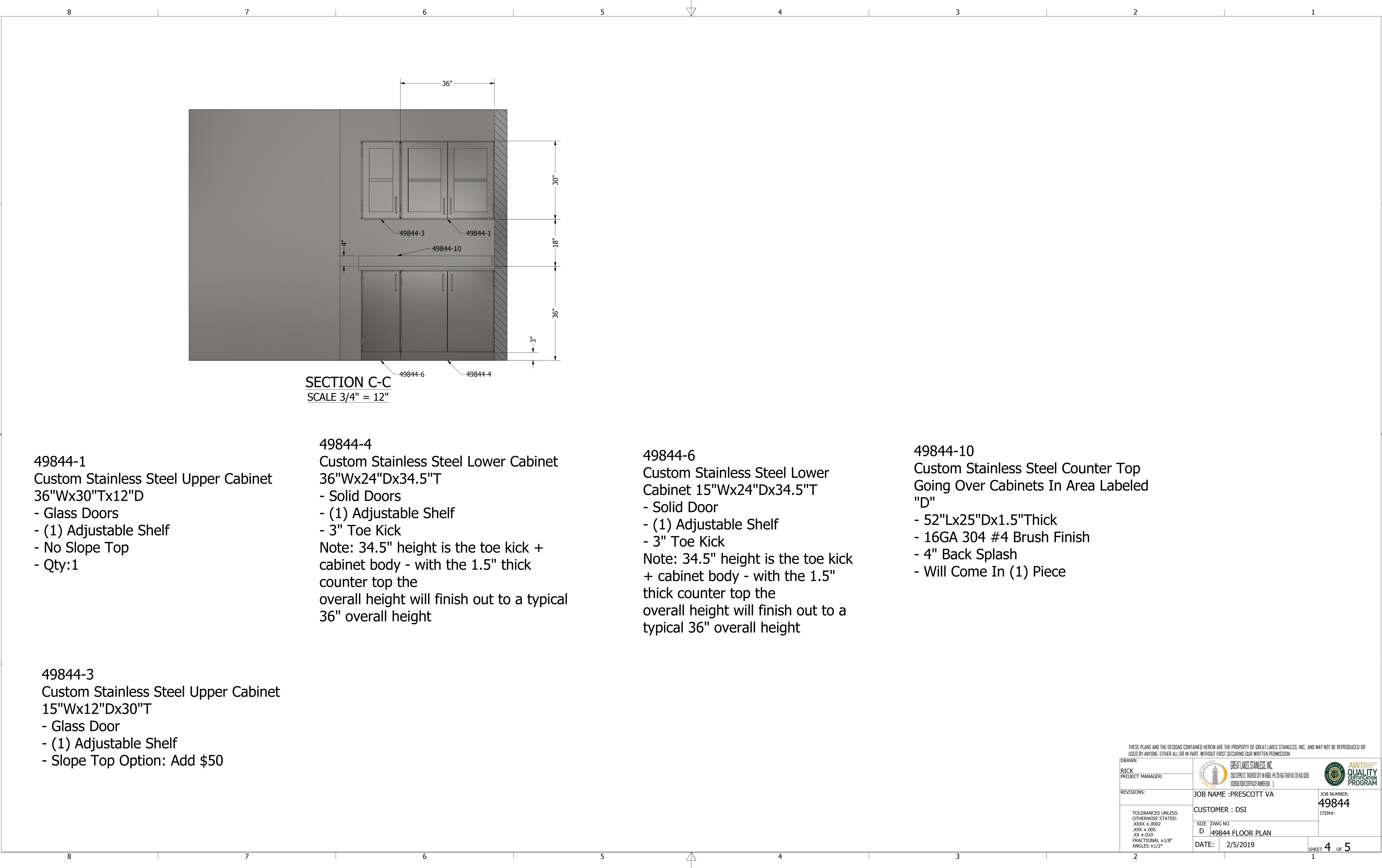


49844-1
Custom Stainless Steel Upper Cabinet
36"Wx30"Tx12"D
- Glass Doors
- (1) Adjustable Shelf
- No Slope Top
- Qty:6

49844-4
Custom Stainless Steel Lower Cabinet
36"Wx24"Dx34.5"T
- Solid Doors
- (1) Adjustable Shelf
- 3" Toe Kick
Note: 34.5" height is the toe kick + cabinet body - with the 1.5" thick counter top the overall height will finish out to a typical 36" overall height

49844-8
Custom Stainless Steel Counter Top Going Over Cabinets In Area Labeled "B"
- 220-9/16"Lx25"Dx1.5"Thick
- 16GA 304 #4 Brush Finish
- 4" Back Splash
- Will Come In (2) Pieces W/ Hairline Seam In Middle
-Notched to fit 49844-7

THESE PLANS AND THE DESIGNS CONTAINED HEREIN ARE THE PROPERTY OF GREAT LAKES STAINLESS, INC., AND MAY NOT BE REPRODUCED OR USED BY ANYONE, EITHER ALL OR IN PART, WITHOUT FIRST SECURING OUR WRITTEN PERMISSION.				
DRAWN RICK	 GREAT LAKES STAINLESS, INC. CROSS STREET CT. TRAVERS CITY, MI 49883-9491 (231) 942-7544 FAX (231) 942-5559 (800) 300-0000 (TOLL FREE)		 	
PROJECT MANAGER:				
REVISIONS:	JOB NAME :PRESCOTT VA		JOB NUMBER: 49844	
TOLERANCES UNLESS OTHERWISE STATED: .XXXX ±.0002 .XXX ±.005 .XX ±.010 FRACTIONAL ±1/8" ANGLES ±1/2°	CUSTOMER : DSI		ITEM#:	
	SIZE	DWG NO		
	D 49844 FLOOR PLAN			
	DATE:	2/5/2019	SHEET 3 OF 5	
2			1	



THESE PLANS AND THE DESIGNS CONTAINED HEREIN ARE THE PROPERTY OF GREAT LAKES STAINLESS, INC., AND MAY NOT BE REPRODUCED OR USED BY ANYONE, EITHER ALL OR IN PART, WITHOUT FIRST SECURING OUR WRITTEN PERMISSION.

DRAWN
RICK

PROJECT MANAGER:

REVISIONS:

TOLERANCES UNLESS OTHERWISE STATED:
:XXX ±.0002
:XX ±.005
:XX ±.010
FRACTIONAL ±1/8"
ANGLES ±1/2°

AWI

QUALITY

CERTIFICATION

PROGRAM

GREAT LAKES STAINLESS, INC.

1000 STEEL DR. TRAPER CITY, IA 49885-4910 231-242-7544 FAX 231-242-5539

(202503-2009 CERTIFICATE NUMBER 2301)

JOB NAME :PRESCOTT VA

CUSTOMER : DSI

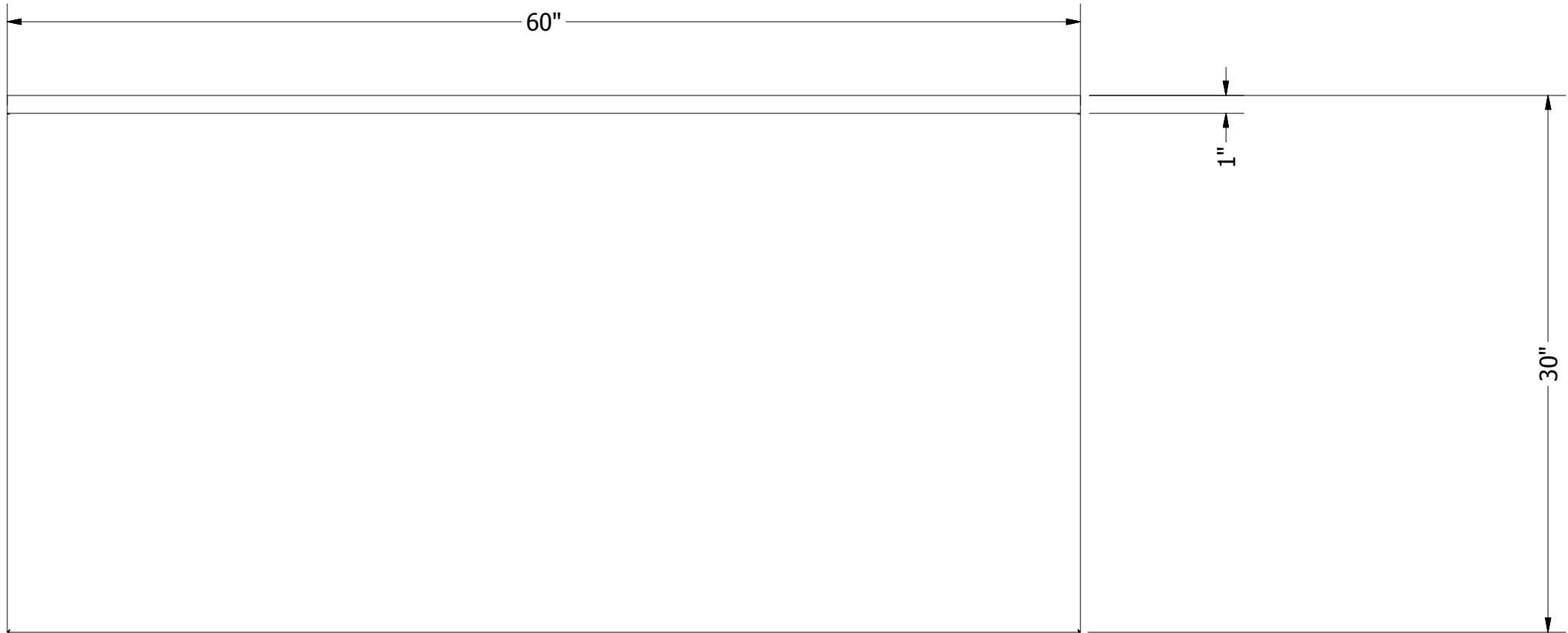
DATE: 2/5/2019

JOB NUMBER:
49844

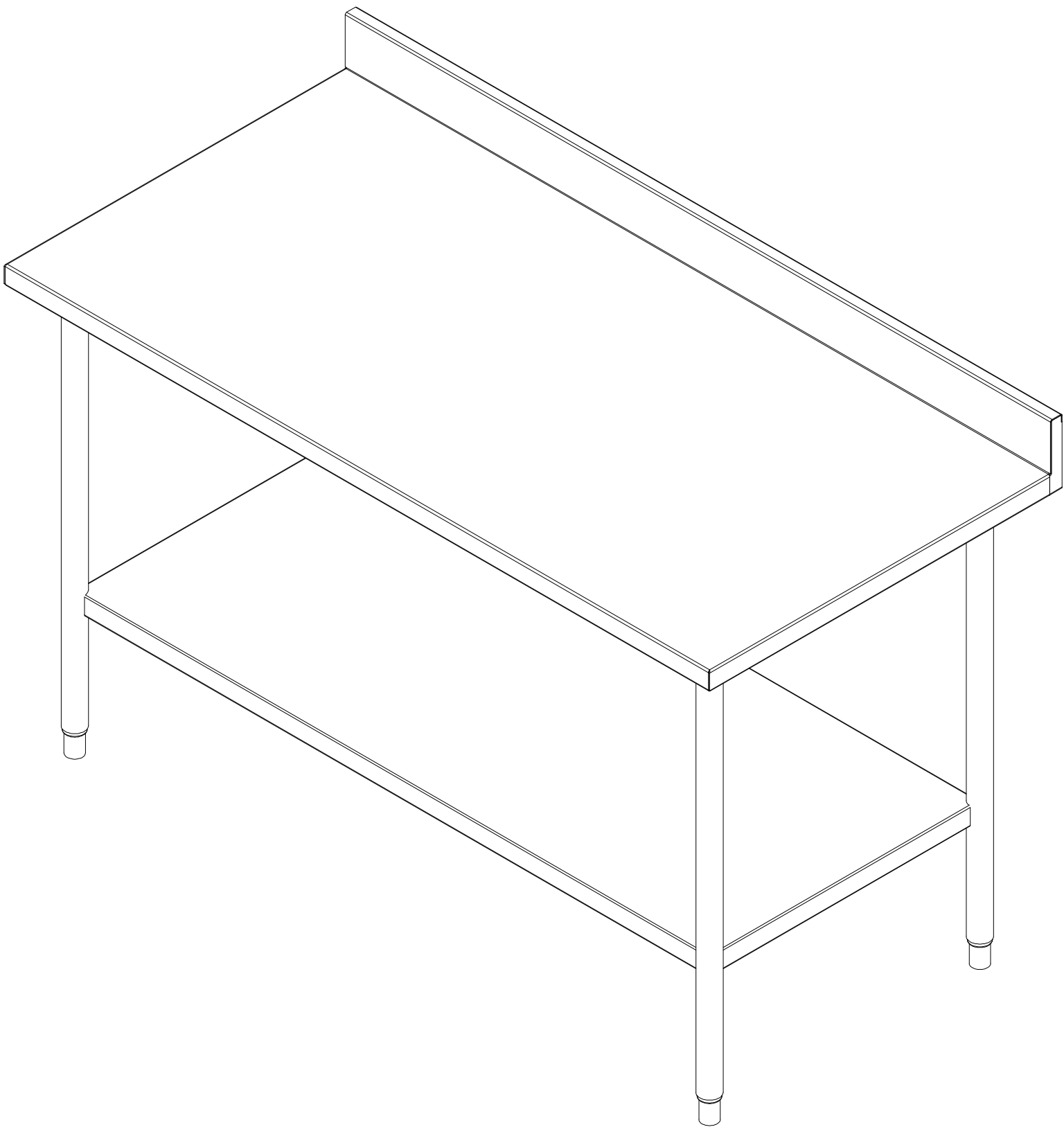
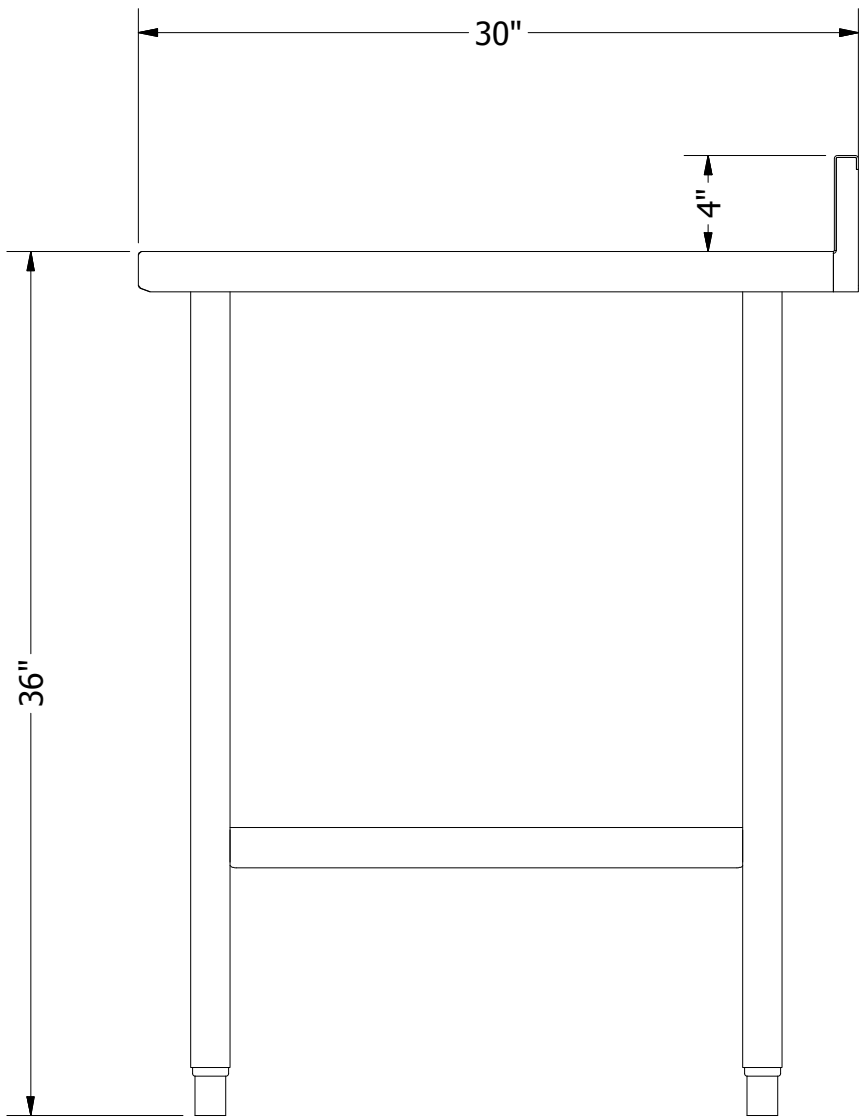
ITEM#:

SIZE DWG NO
D 49844 FLOOR PLAN

SHEET 4 OF 5



FRONT ELEVATION
SCALE 1 1/2" = 12"



- 49844-12
Custom Stainless Steel Work Table
- 60"Lx30"Dx1.5"Thick Top
 - 16GA 304 #4 Brush Finish
 - 4" Back Splash
 - 32" Tall
 - Undershelf
 - 4 Adjustable Bullet Feet

THESE PLANS AND THE DESIGNS CONTAINED HEREIN ARE THE PROPERTY OF GREAT LAKES STAINLESS, INC., AND MAY NOT BE REPRODUCED OR USED BY ANYONE, EITHER ALL OR IN PART, WITHOUT FIRST SECURING OUR WRITTEN PERMISSION.			
DRAWN RICK	GREAT LAKES STAINLESS, INC. CROSS STREET CT. TRAVERS CITY MI 49883 PH: 231-842-7544 FAX: 231-842-5539 (800)833-7009 CERTIFICATE NUMBER: 3081		AWI CERTIFICATION PROGRAM
PROJECT MANAGER:	JOB NAME :PRESCOTT VA		JOB NUMBER: 49844
REVISIONS:	CUSTOMER : DSI		ITEM#:
TOLERANCES UNLESS OTHERWISE STATED: .XXXX ±.0002 .XXX ±.005 .XX ±.010 FRACTIONAL ±1/8" ANGLES ±1/2°	SIZE	DWG NO	
	D	49844 FLOOR PLAN	
	DATE:	2/5/2019	SHEET 5 OF 5