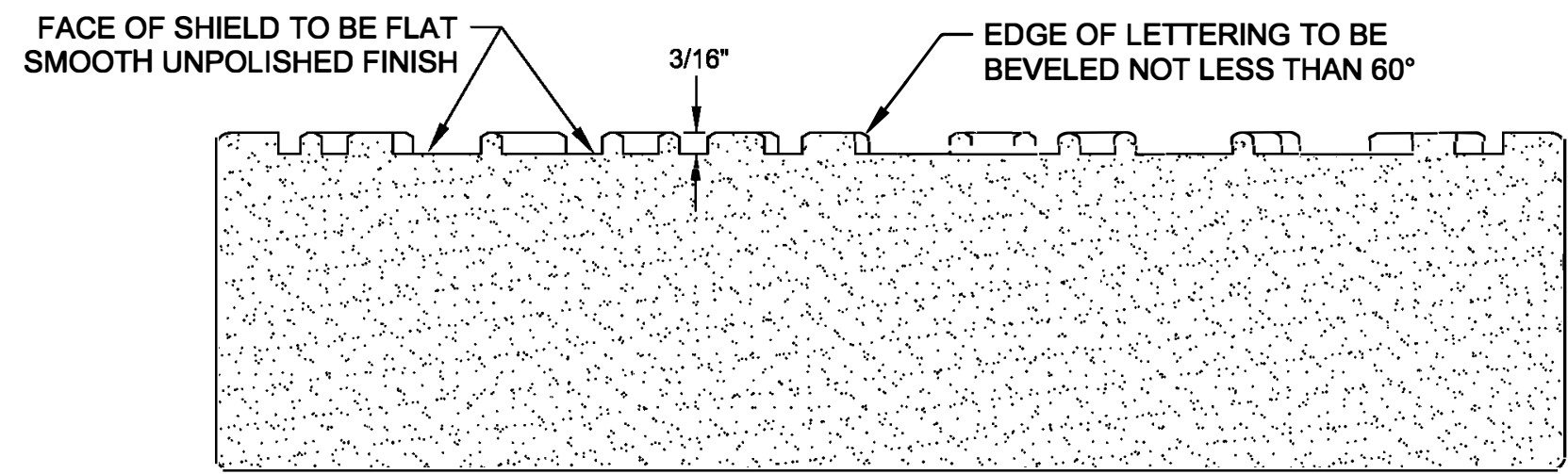
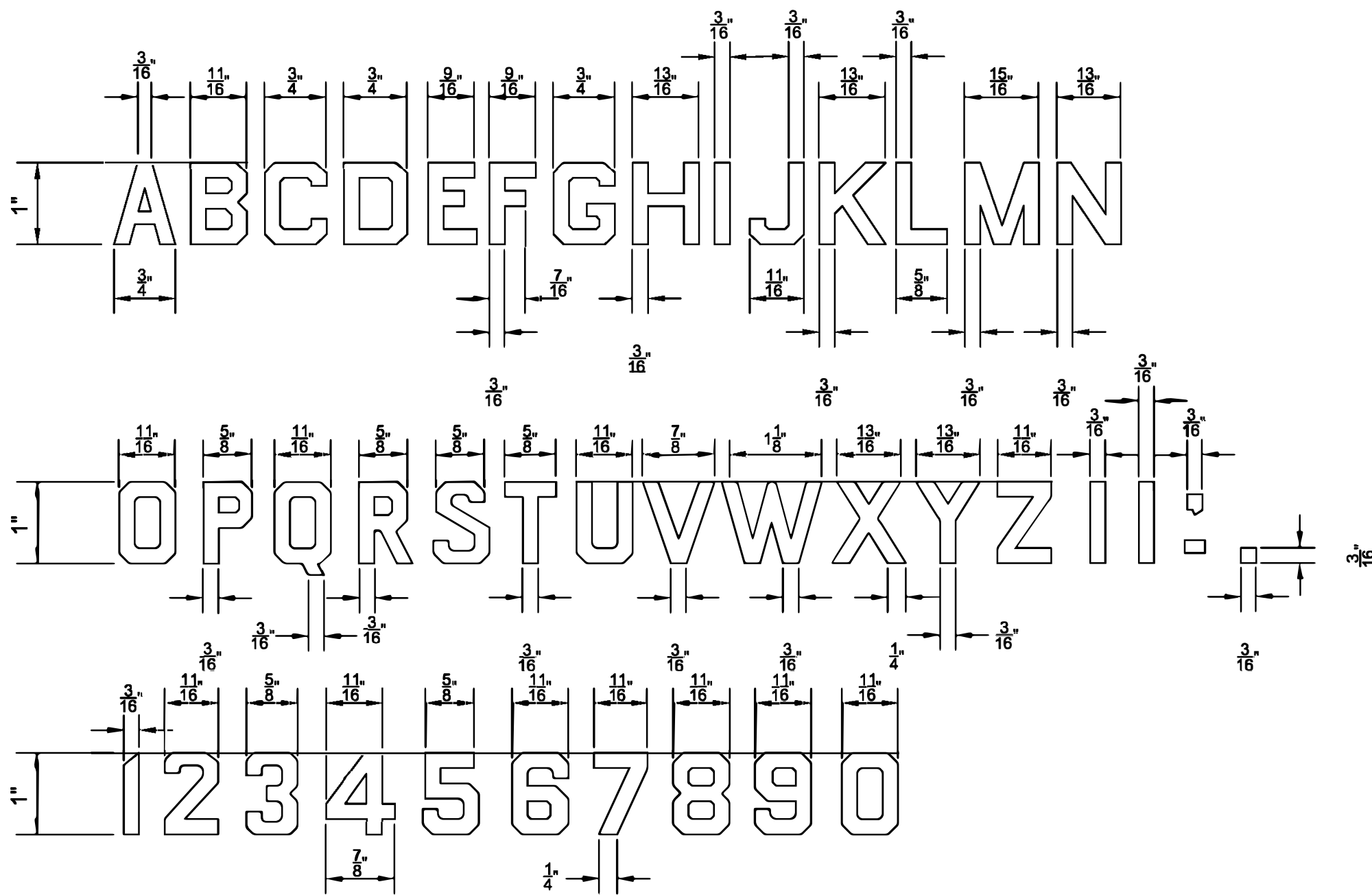


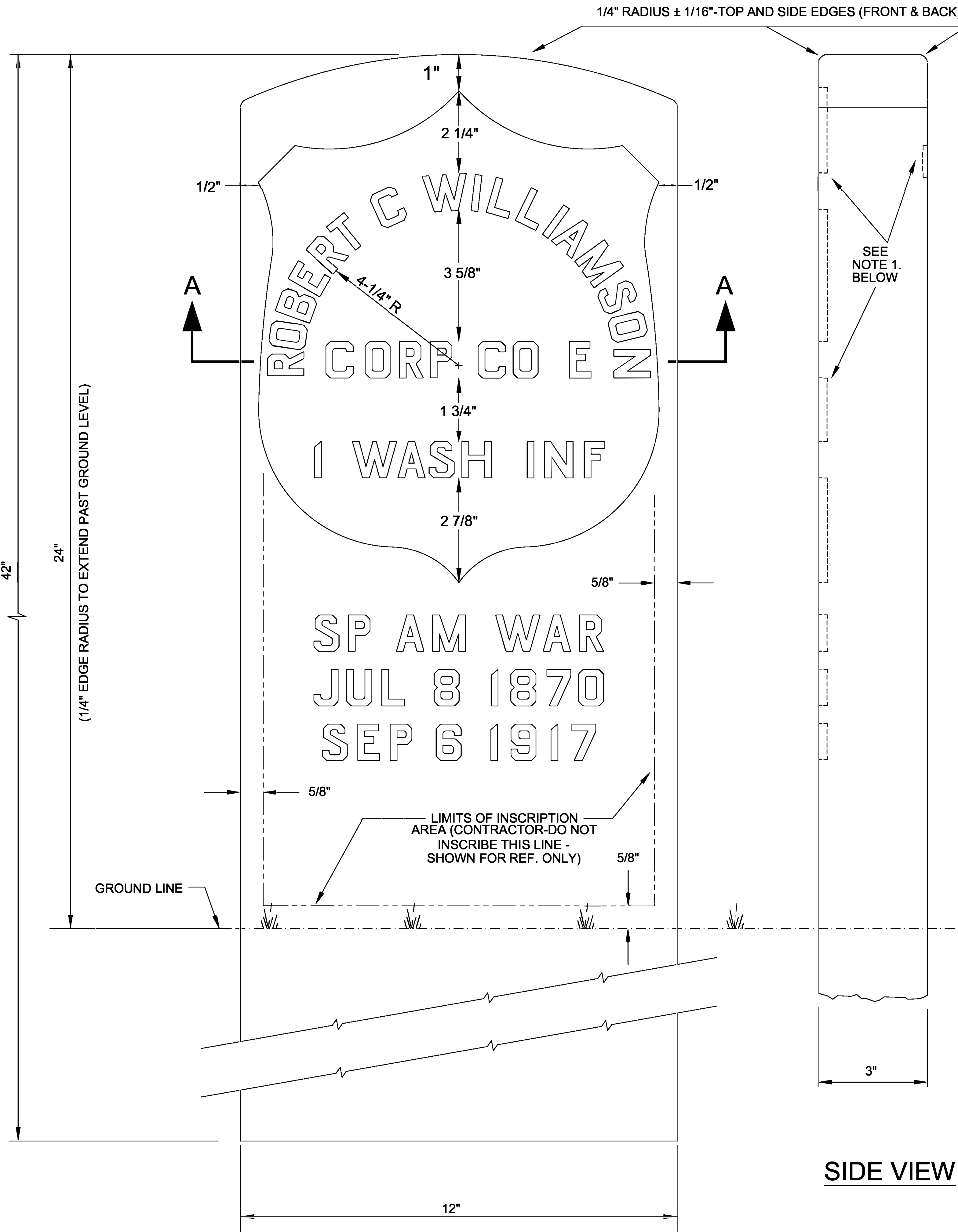
INSCRIPTION PLACEMENT & DETAIL
SCALE: 3/16"=1"



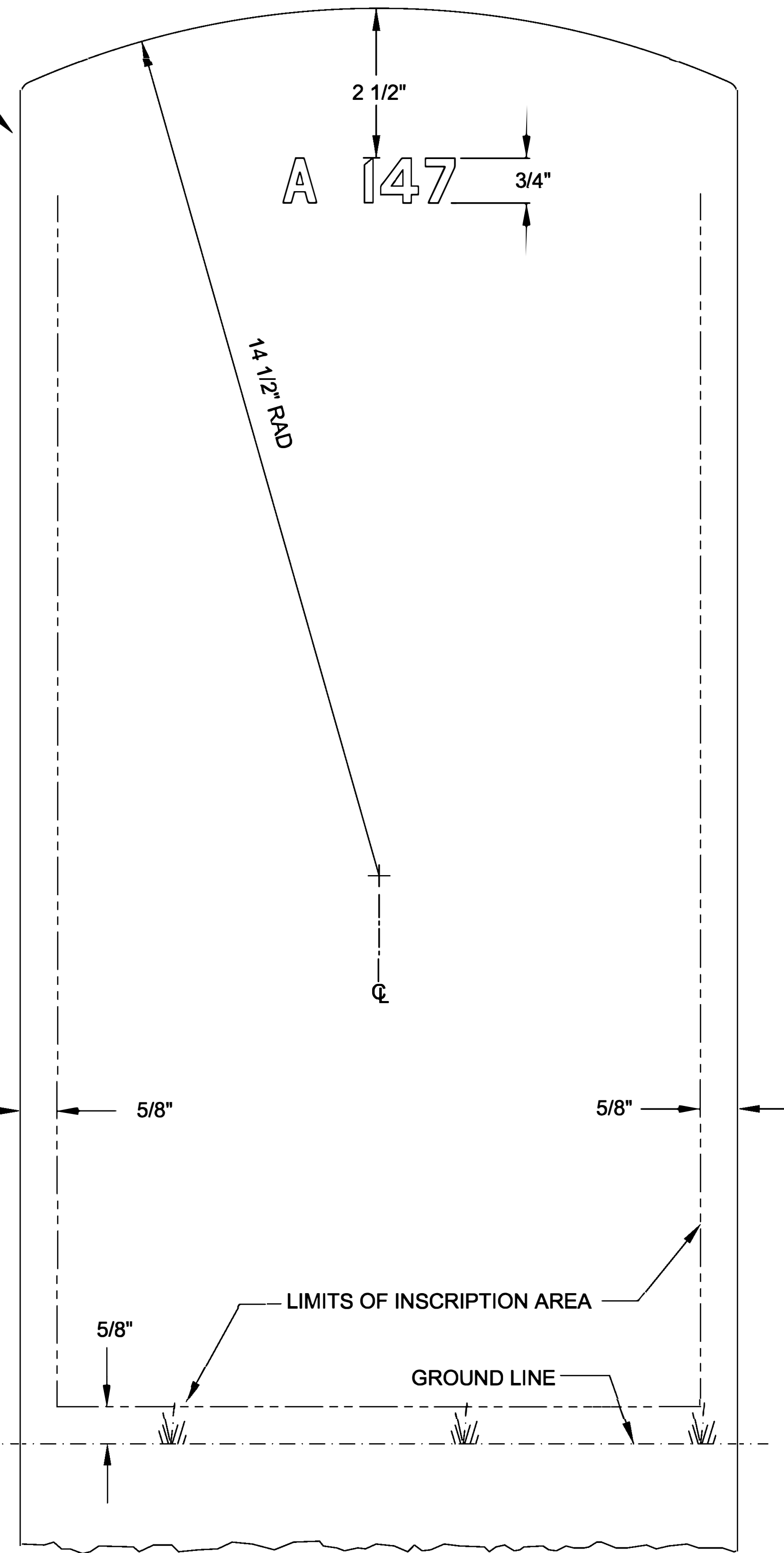
SECTION A-A
SCALE: 1/2"=1"



TYPICAL FRONT FACE OF STONE
SCALE: 1/2"=1"



SIDE VIEW



REAR FACE OF STONE SHOWING
CORRECT LOCATION OF
SECTION & GRAVE NUMBER

GENERAL NOTES:

1. INSCRIPTION ON BACK SIDE OF MARKER IS FOR LOCATION OF SECTION AND GRAVE NUMBER.
2. ALL DIMENSIONAL TOLERANCES FOR LENGTH, WIDTH, AND HEIGHT ARE $\pm 1/4$ " UNLESS OTHERWISE SPECIFIED.
3. REFER TO DRAWING A-LFN&OC-1/2/3, REV. B FOR APPROVED INSCRIPTION DEPTHS.

CONVERSION TABLE			
ENGLISH/ U.S. STANDARD	METRIC	ENGLISH/ U.S. STANDARD	METRIC
42"	106.68 cm	2"	5.08 cm
24"	60.96 cm	1 5/8"	4.13 cm
14 1/2"	36.83 cm	1"	2.54 cm
13"	33.02 cm	3/4"	1.90 cm
4"	10.16 cm	5/8"	1.59 cm
3"	7.62 cm	1/2"	1.27 cm
2 1/2"	6.35 cm	1/4"	.64 cm



NATIONAL
CEMETERY
ADMINISTRATION

Drawing Title
UPRIGHT, MARBLE, OLD STYLE,
RAISED LETTERS, CIVIL/SP-AM WAR
12" X 42" X 3"

Approved: Director, Memorial Programs Service

Signed

Project Title
GOVERNMENT HEADSTONES
AND MARKERS

Marker Type

XA

Checked

KEE/KS

Drawn

MLT
SYSTEMS

Date
JULY 9, 2013

Project No.

Drawing No.

A-XA

Sheet 1 of 1

