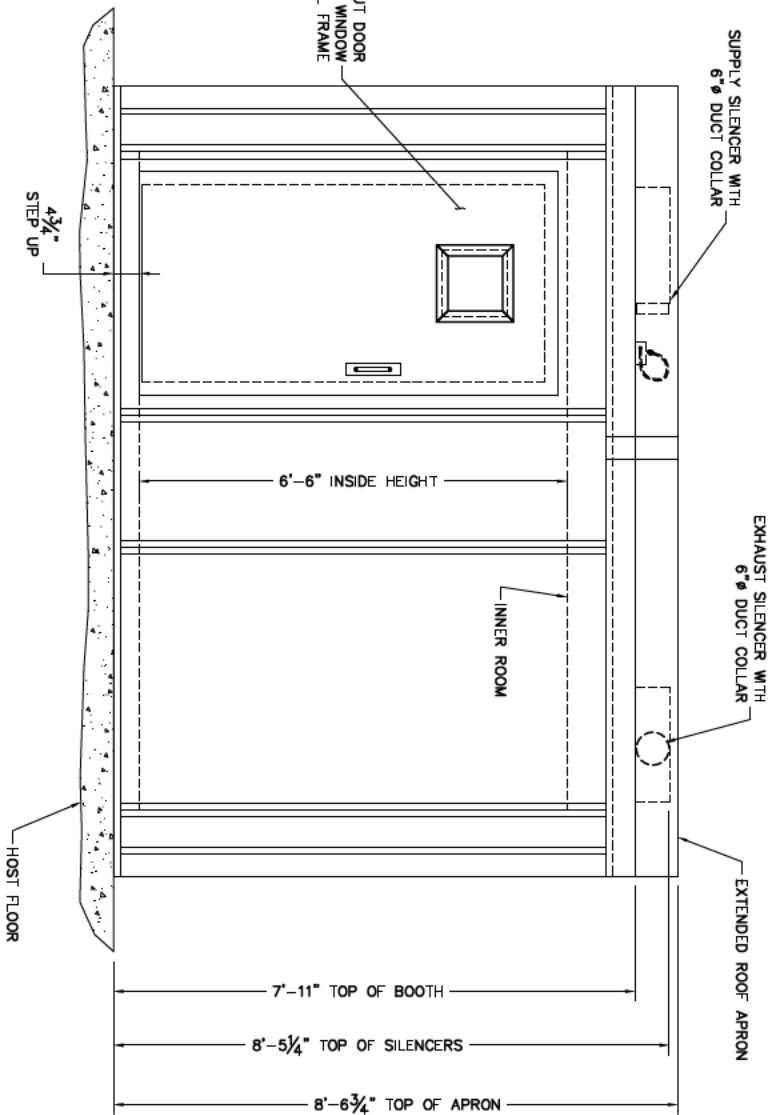
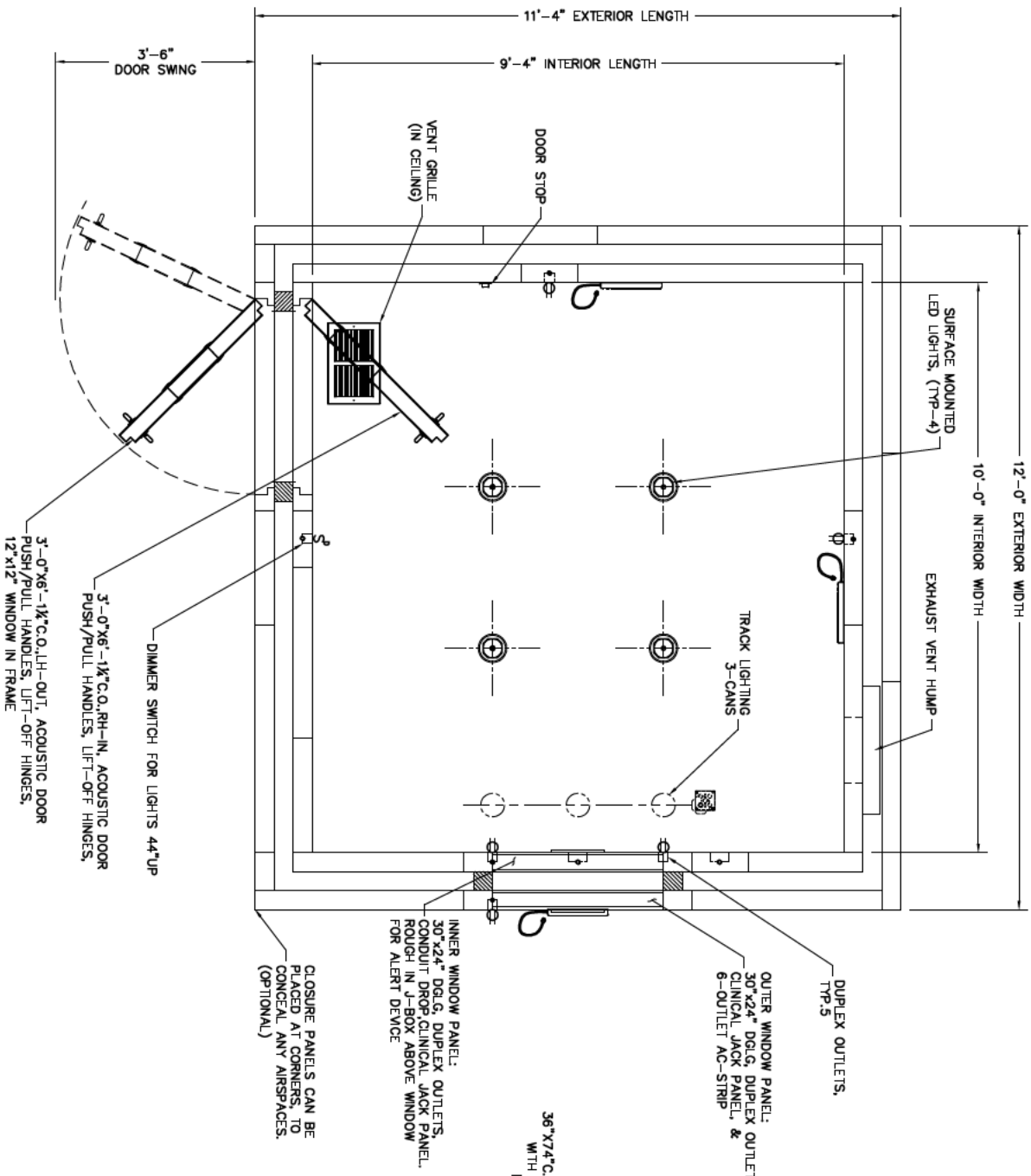


- NOTE:
- CHAMBERS HAVE BEEN DESIGN WITH A 4" AIRSPACE BETWEEN THE HOST WALLS AND CHAMBER WALLS.
 - CLOSURE PANELS WILL BE PLACED AT CORNERS OF BOOTH TO COVER ANY OPENINGS. (OPTIONAL)
 - ETS-LINDGREN DOES NOT RECOMMENDED COUPLING ANY OBJECT TO THE EXTERIOR OF THE CHAMBER.
 - MAXIMUM FLOW RATE: 200 cfm
 - RECOMMENDED FLOW RATE: 80-115 cfm AT .2" STATIC PRESSURE (IN. WATER)
 - OF CONDITIONED (55 DEGREE) AIR FOR AN AIR EXCHANGED EVERY 4-6 MINUTES

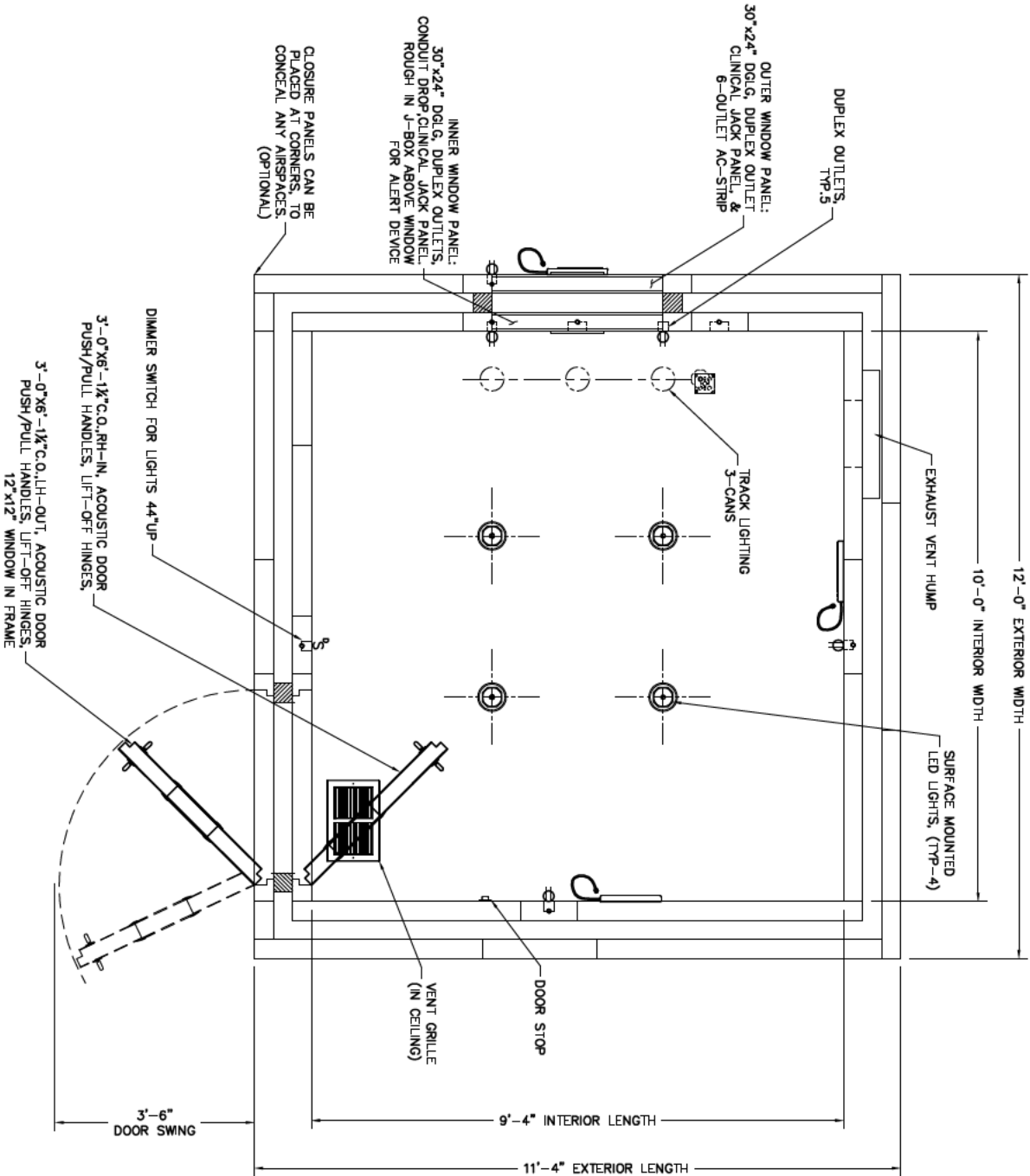


1 WALL PLAN LAYOUT

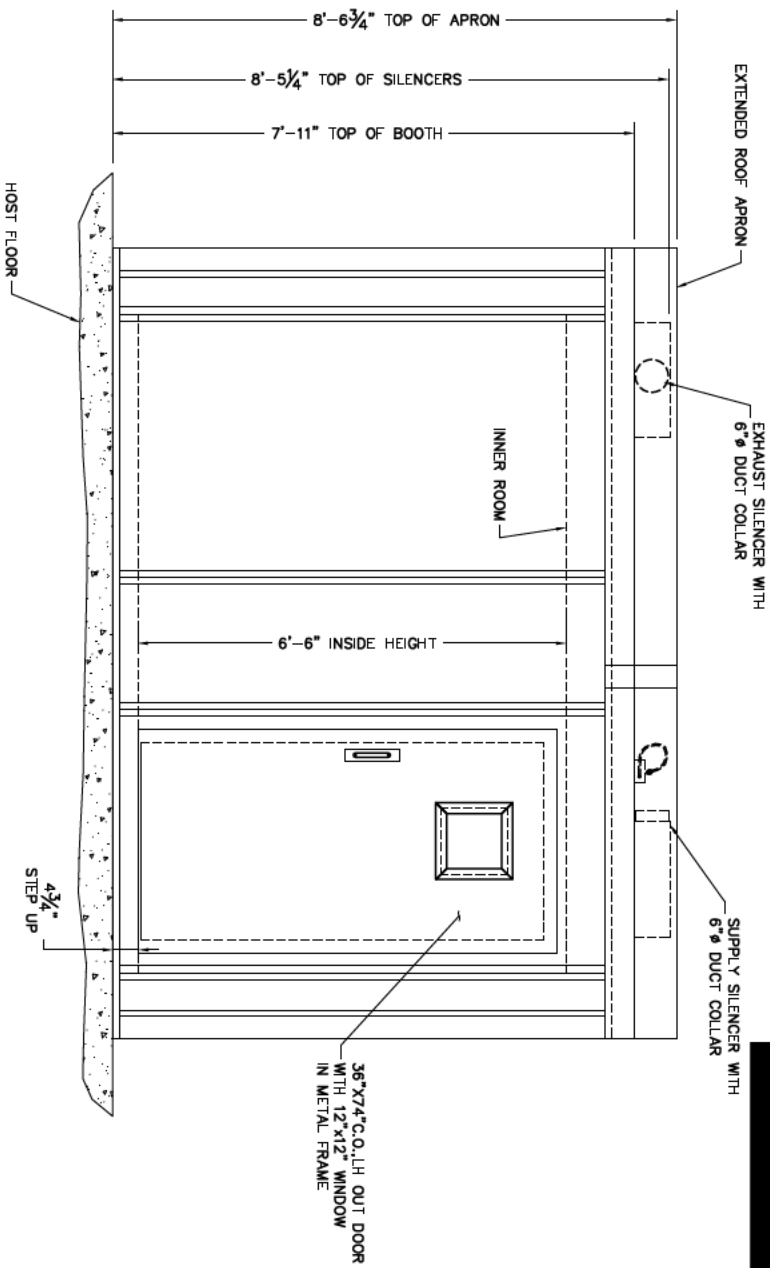
2 DOOR ELEVATION



- NOTE:
- CHAMBERS HAVE BEEN DESIGN WITH A 4" AIRSPACE BETWEEN THE HOST WALLS AND CHAMBER WALLS.
 - CLOSURE PANELS WILL BE PLACED AT CORNERS OF BOOTH TO COVER ANY OPENINGS. (OPTIONAL)
 - ETS-LINDGREN DOES NOT RECOMMENDED COUPLING ANY OBJECT TO THE EXTERIOR OF THE CHAMBER.
 - MAXIMUM FLOW RATE: 200 cfm
 - RECOMMENDED FLOW RATE: 80-115 cfm AT .2" STATIC PRESSURE (IN. WATER)
 - OF CONDITIONED (55 DEGREE) AIR FOR AN AIR EXCHANGED EVERY 4-6 MINUTES



3 WALL PLAN LAYOUT



4 DOOR ELEVATION

