

0 6 12 18 24 30 36 42 48 54 60 66 72 78 84 90 96 102 108 114 120 126 132 138 144 150 156 162 168 174 180 186 192 198 204 210 216 222 228 234 240 246 252 258 264 270 276 282 288 294 300 306 312 318 324 330 336 342 348 354 360 366 372 378 384 390 396 402 408 414 420 426 432 438 444 450 456 462 468 474 480 486 492 498 504 510 516 522 528 534 540 546 552 558 564 570 576 582 588 594 600 606 612 618 624 630 636 642 648 654 660 666 672 678 684 690 696 702 708 714 720 726 732 738 744 750 756 762 768 774 780 786 792 798 804 810 816 822 828 834 840 846 852 858 864 870 876 882 888 894 900 906 912 918 924 930 936 942 948 954 960 966 972 978 984 990 996 1000

three inches = one foot

one and one-half inches = one foot

one inch = one foot

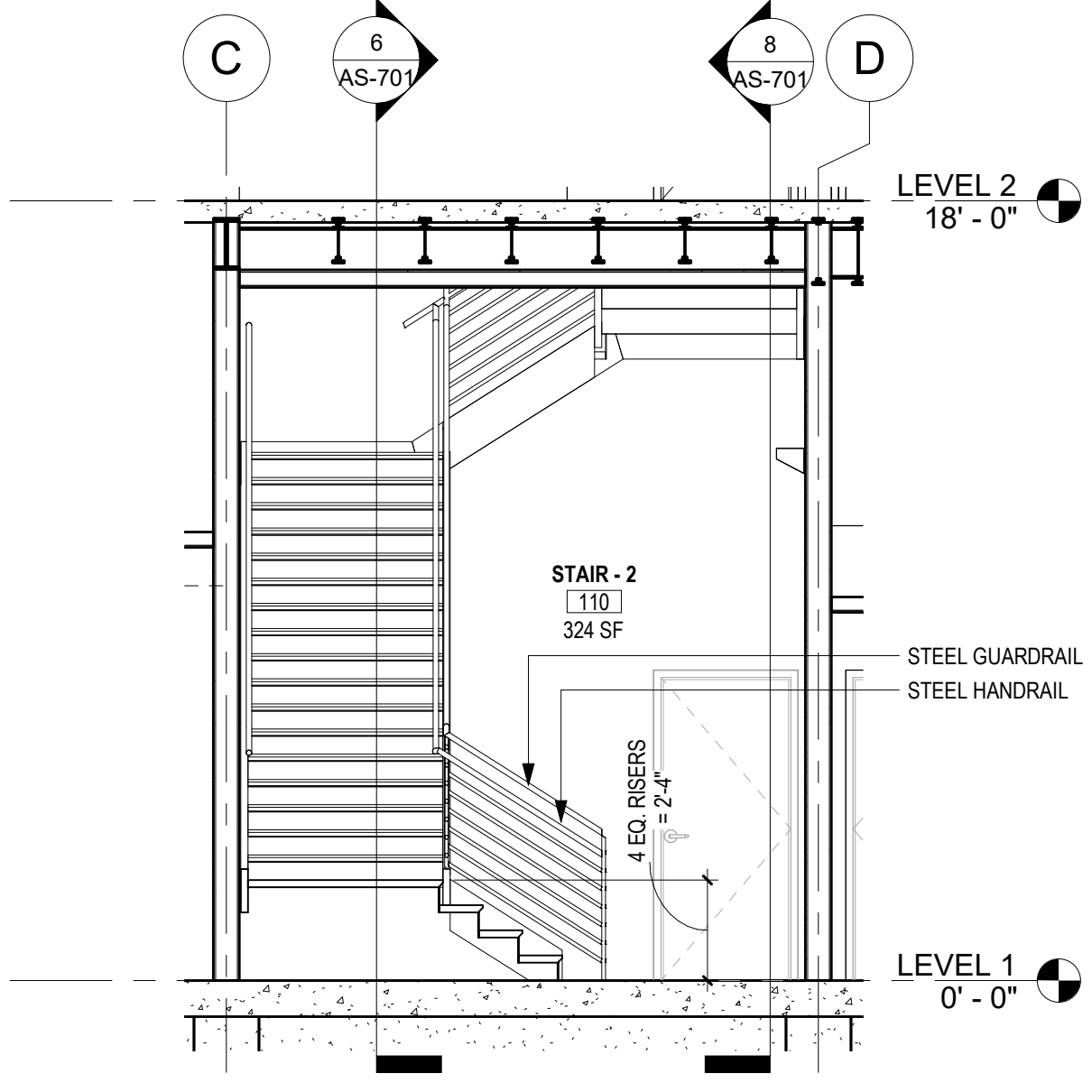
three-quarters inch = one foot

one-half inch = one foot

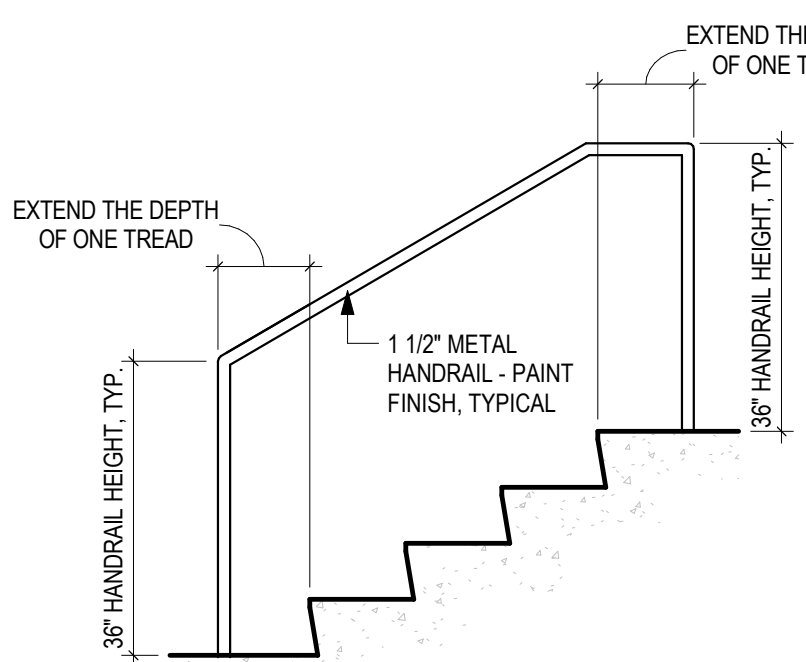
three-eighths inch = one foot

one-quarter inch = one foot

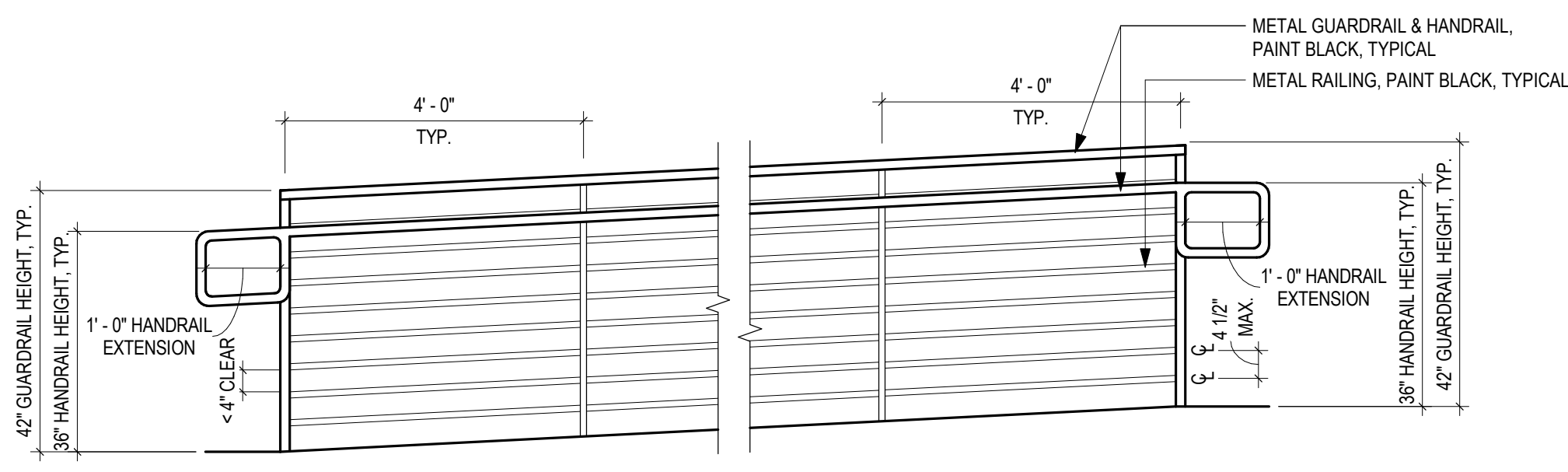
one-eighth inch = one foot



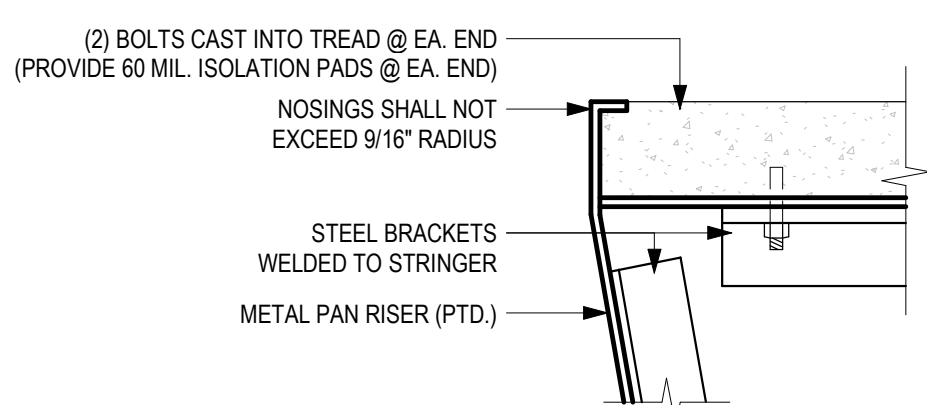
10 SECTION - STAIR 2-4  
1/4" = 1'-0"



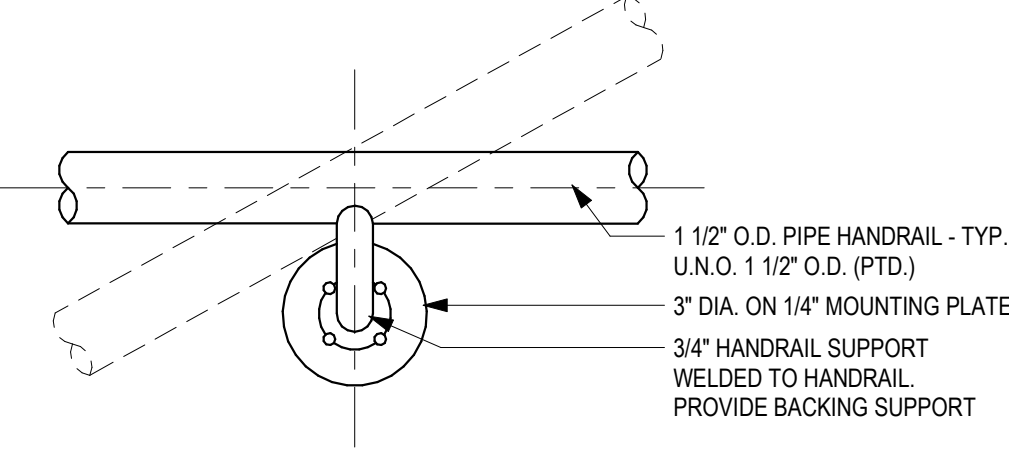
9 EXTERIOR HANDRAIL ELEVATION  
1/2" = 1'-0"



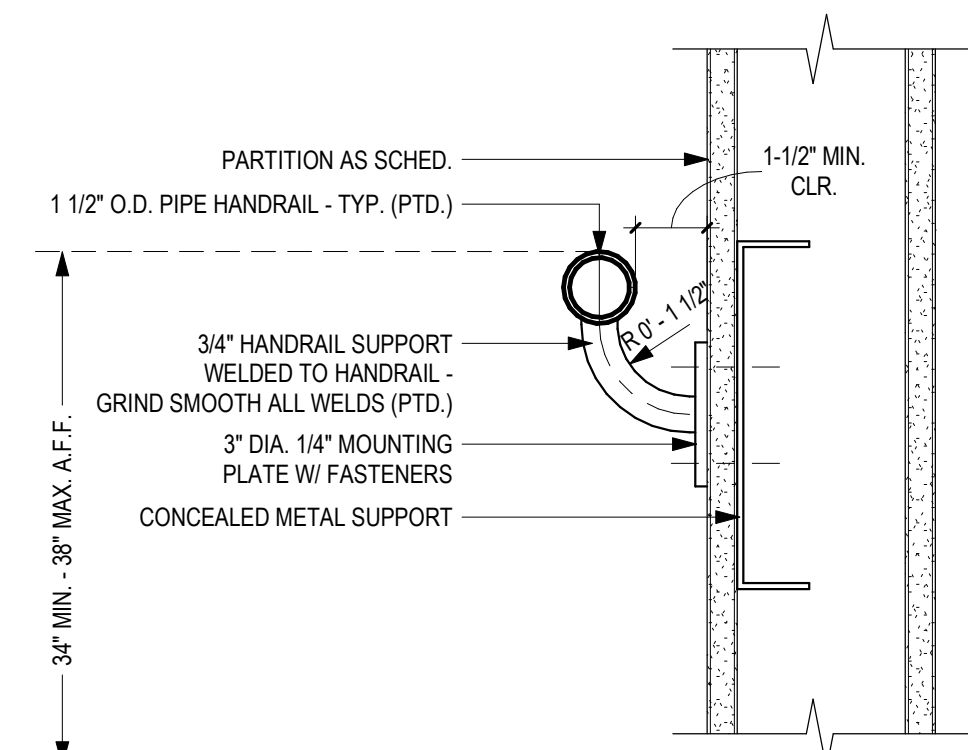
8 EXTERIOR RAILING ELEVATION  
1/2" = 1'-0"



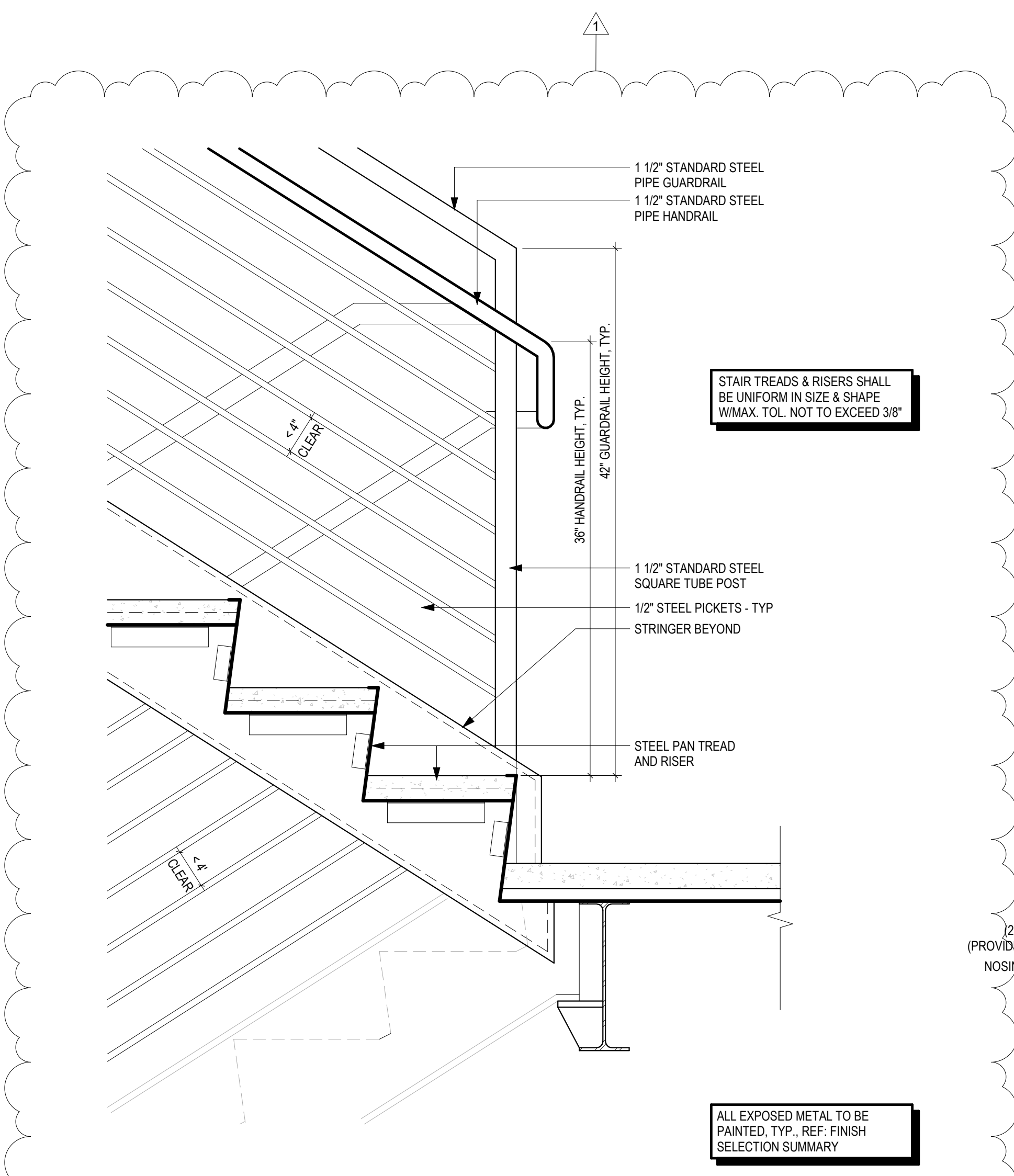
7 TYP. STAIR NOSING  
3" = 1'-0"



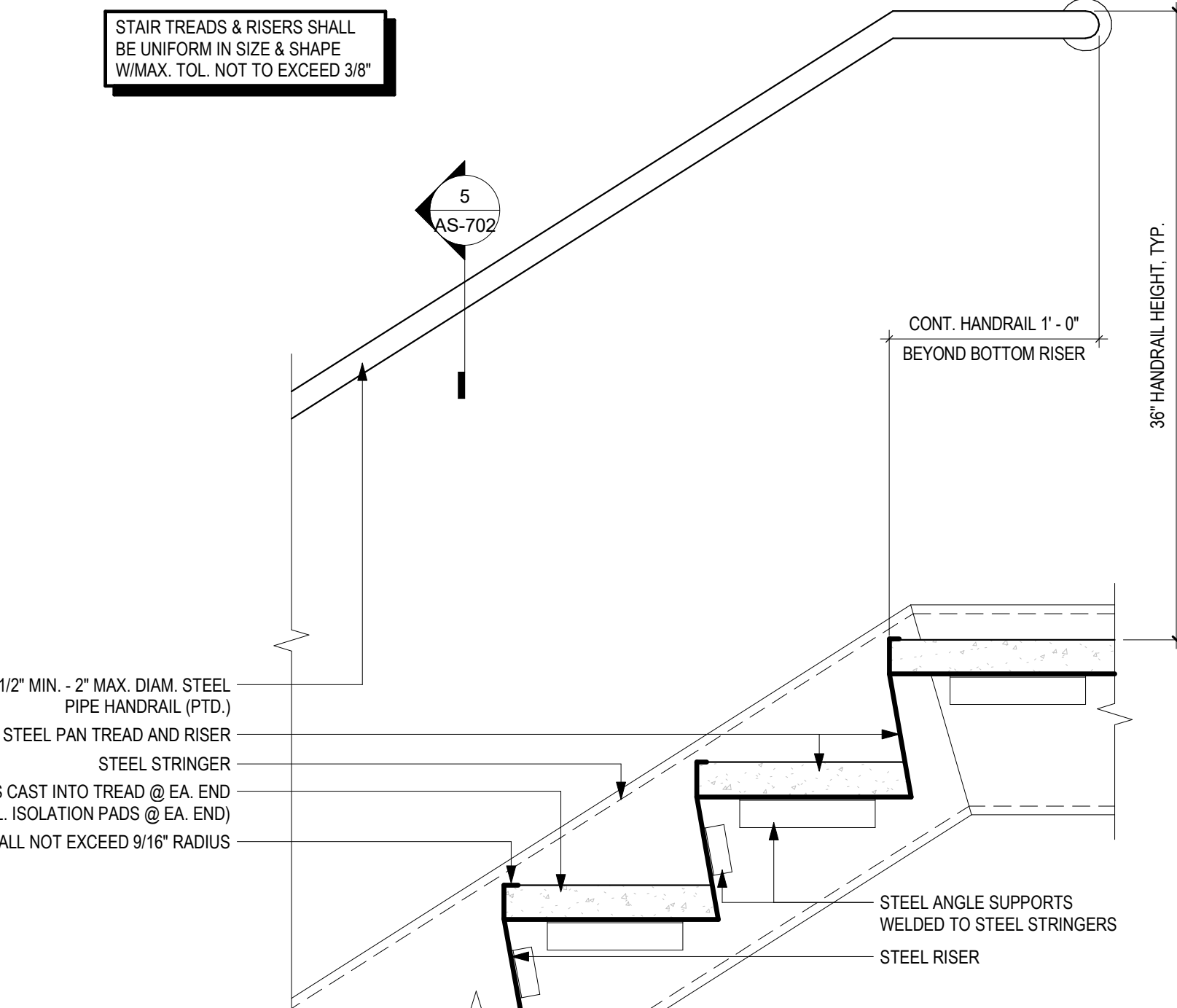
6 TYP. HANDRAIL SUPPORT  
3" = 1'-0"



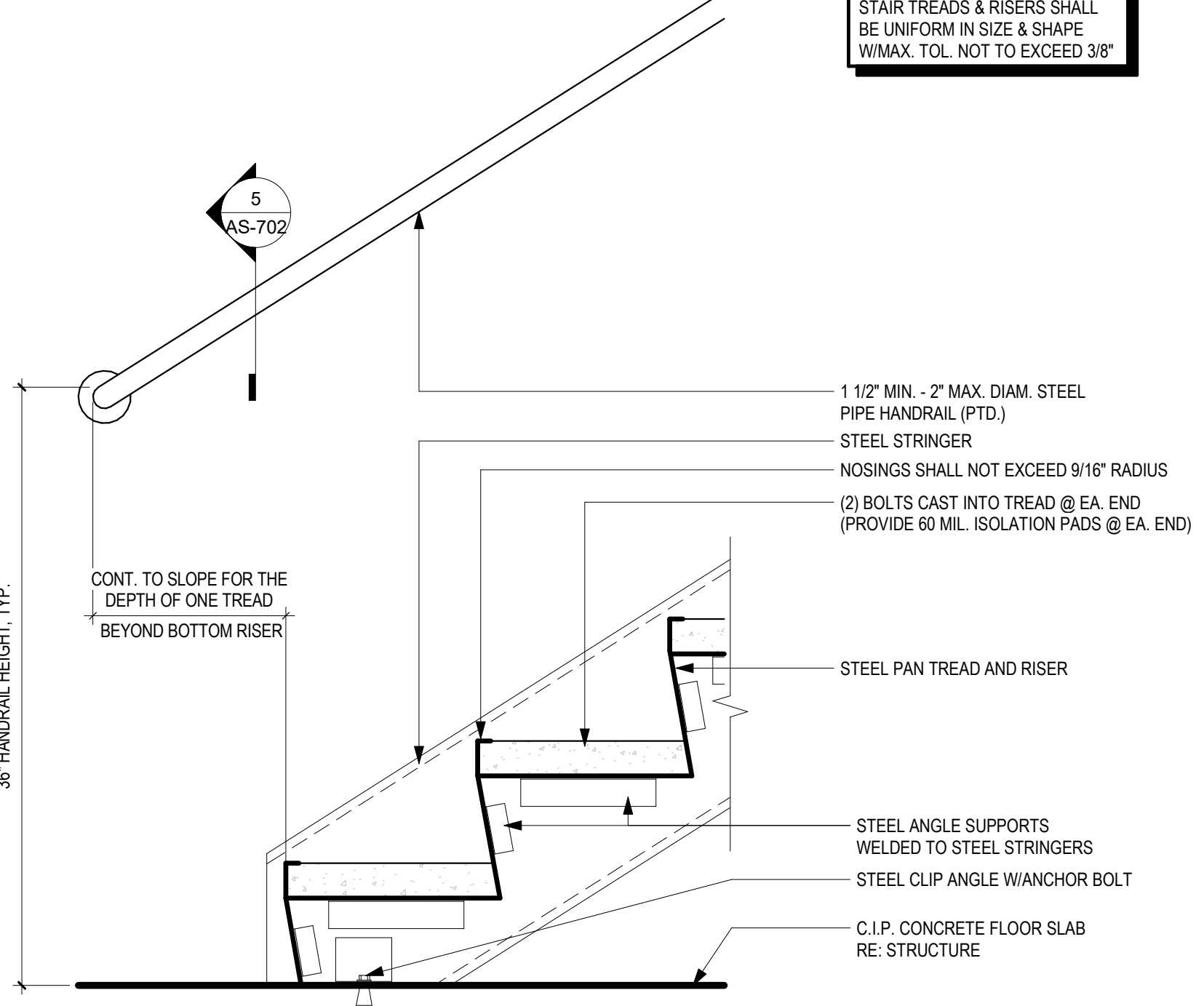
5 TYP. HANDRAIL SUPPORT SECTION  
3" = 1'-0"



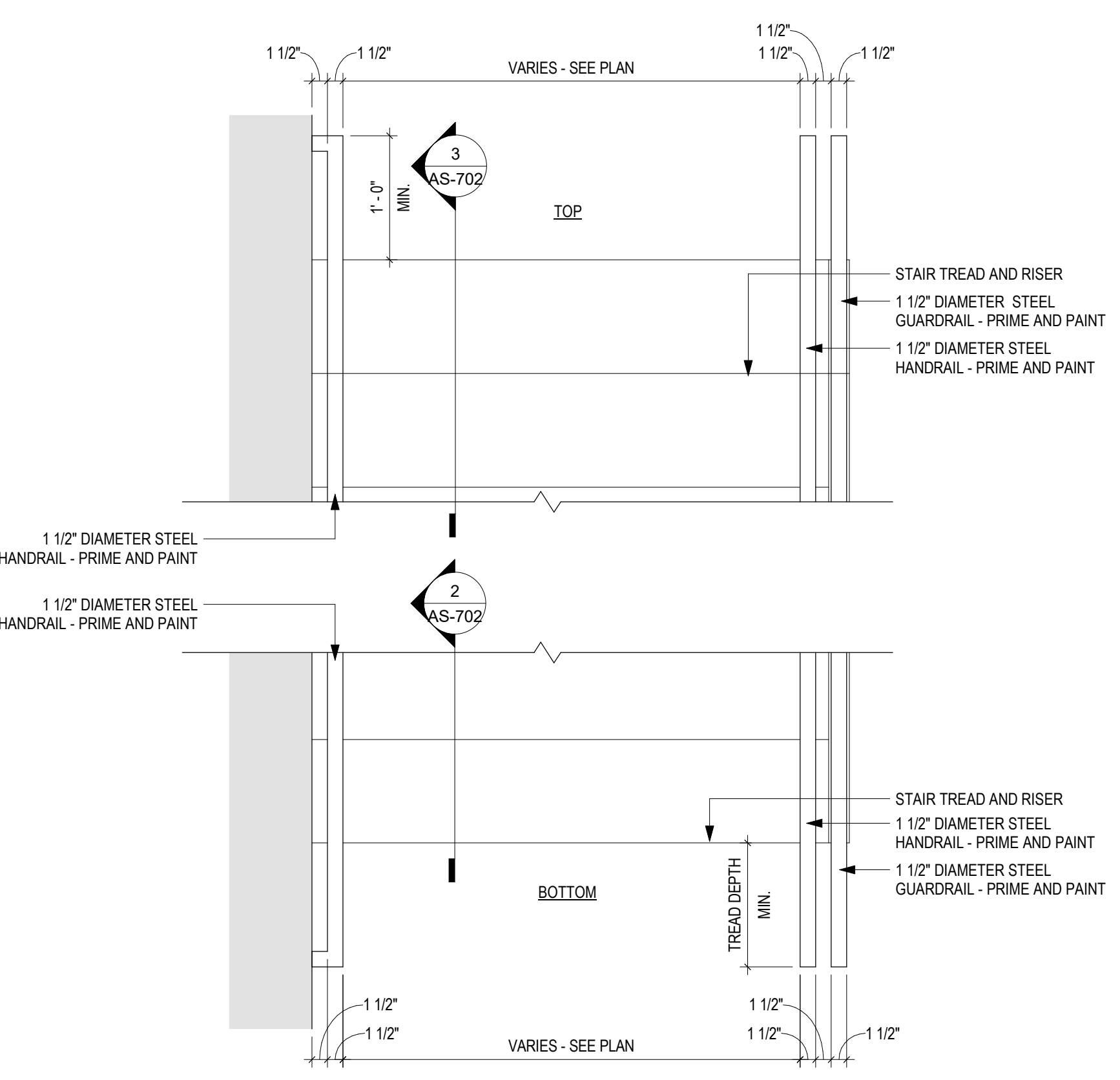
4 TYP. INTERMEDIATE LANDING (SECTION DETAIL)  
1 1/2" = 1'-0"



3 TYP. TOP STAIR RISER (SECTION DETAIL)  
1 1/2" = 1'-0"



2 TYP. BOTTOM STAIR RISER (SECTION DETAIL)  
1 1/2" = 1'-0"



1 TYPICAL HANDRAIL PLAN  
1" = 1'-0"

<div>1</div> <div>Revision #</div> <div>ASI #1</div> <div>Description</div> <div>9/11/2019</div> <div>Date</div>	<div>CONSULTANT INFORMATION</div> <div>STRUCTURAL / CIVIL ENGINEER</div> <div>H2B, INC.</div> <div>1225 N. LOOP WEST, SUITE 800</div> <div>HOUSTON, TX 77068</div> <div>(713) 864-2900</div> <div>FIRE PROTECTION ENGINEER</div> <div>POOLE FIRE PROTECTION, INC.</div> <div>19910 W. 161ST STREET</div> <div>OLATHE, KS 66062</div> <div>(913) 829-9650</div> <div>COMMISSIONING</div> <div>GLHN ARCHITECTS &amp; ENGINEERS, INC.</div> <div>2639 E. BROADWAY BLVD</div> <div>TUCSON, AZ 85716</div> <div>(520) 881-4546</div> <div>LANDSCAPE ARCHITECT</div> <div>ARC STUDIOS INC.</div> <div>3117 E. FLOWER STREET</div> <div>TUCSON, AZ 85716</div> <div>(520) 882-9655</div> <div>MECH. / ELEC. / PLUMB. / TECH. ENGINEER</div> <div>SPUR DESIGN</div> <div>11020 King Street, Suite 350</div> <div>Overland Park, KS 66210</div> <div>(405) 842-6100</div>	<div>ARCHITECT</div> <div><div>Spur</div><div>DESIGN</div></div> <div>311 SW 25th Street</div> <div>Oklahoma City, OK 73109</div> <div>spur-design.com</div> <div>11020 King Street, Suite 350</div> <div>Overland Park, KS 66210</div> <div>www-spur-design.com</div>	<div>Office of</div> <div>Construction</div> <div>and Facilities</div> <div>Management</div> <div>VA</div> <div>U.S. Department of Veteran Affairs</div>	<div>SHEET TITLE</div> <div>VERTICAL CIRCULATION</div> <div>APPROVED: PROJECT DIRECTOR</div>	<div>PROJECT PHASE</div> <div>BID DOCUMENTS</div> <div>FULLY SPRINKLERED</div>	<div>PROJECT TITLE</div> <div>CONSTRUCT REPLACEMENT WAREHOUSE</div> <div>PROJECT LOCATION</div> <div>500 AZ-89, PRESCOTT, AZ 86301</div> <div>DATE</div> <div>4/23/2019</div> <div>CHECKED BY</div> <div>RWG</div> <div>DRAWN BY</div> <div>ZDL</div>	<div>VA PROJECT NUMBER</div> <div>649-414</div> <div>BUILDING NUMBER</div> <div>165</div> <div>DRAWING NUMBER</div> <div>165-AS-702</div> <div>Dwg</div> <div>62 OF 145</div>
--	--	--	--	--	--	---	---