

REPAIR BUILDING 2, STRUCTURE & TUCKPOINT

IOWA CITY VA HEALTHCARE SYSTEM

VA Project #636A8-12-008
601 Hwy 6 West
Iowa City, Iowa 52246

DRAWING INDEX

- GENERAL**
- 2-I1 COVER SHEET
 - 2-I2 ABBREVIATION & SYMBOLS LEGEND

- ARCHITECTURAL**
- 2-A1 PARTIAL FIRST FLOOR PLAN & DETAILS
 - 2-A2 ROOF PLAN & DETAILS
 - 2-A3 EXTERIOR BUILDING ELEVATIONS & PHOTOS
 - 2-A4 PHOTOS

- STRUCTURAL**
- 2-S1 REPAIR PLAN, STRUCTURAL NOTES & DETAILS

PLAN APPROVED BY:

_____ DATE _____

CHIEF ENGINEER

_____ DATE _____

MEDICAL CENTER DIRECTOR

_____ DATE _____

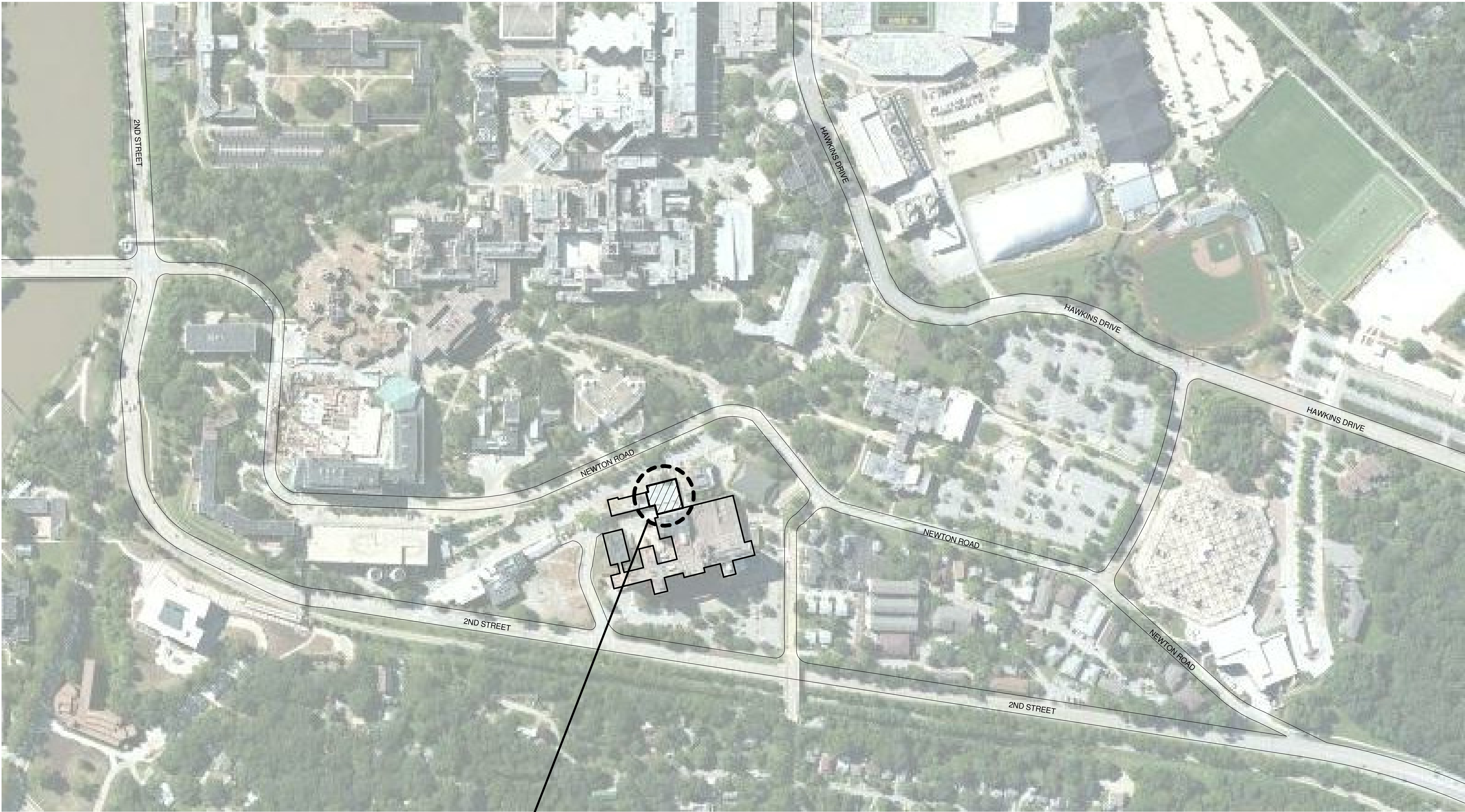
ASSOCIATE DIRECTOR

_____ DATE _____

CHIEF OF STAFF

_____ DATE _____

ASSOCIATE DIRECTOR FOR PATIENT CARE SERVICES



PROJECT LOCATION

PROJECT LOCATION
NO SCALE



		CONSULTANTS:		ARCHITECT/ENGINEERS:	<div>Project Title</div> <div>COVER SHEET</div> <div>Approved: RLR</div>	<div>Project Number</div> <div>Iowa City VA Healthcare System Repair Building 2, Structure & Tuckpoint</div>	<div>Project Number</div> <div>636A8-12-008</div>	Office of Construction and Facilities Management			
						<div>Building Number</div> <div>2</div>	<div>Drawing Number</div> <div>2-11</div>				
						<div>Location</div> <div>Iowa City, Iowa</div>	<div>Date</div> <div>10/01/2012</div>		<div>Checked</div> <div>DKP</div>	<div>Drawn</div> <div>REW</div>	<div>Dwg. 1 of 7</div>
Revisions:	Date										