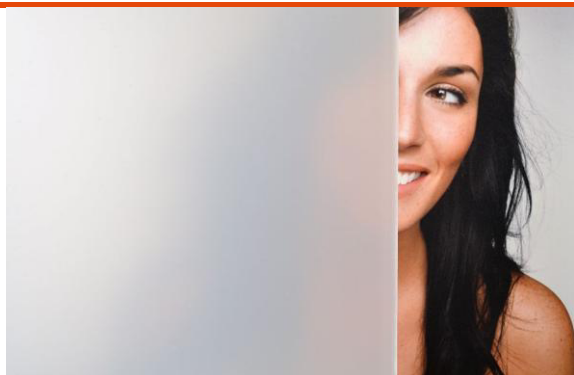


## SOLYX® Glass Finishes

### SXWF-WF White Frost



#### Product Description

SOLYX® SXWF-WF White Frost is a frosted polyester with a translucent effect. Ideal for obscuring direct visibility and allows excellent light transmission.

#### Specifications

Product Code	SXWF-WM
Product Family	Simple Frosted
Film Type	Polyester
Adhesive Type	Pressure-sensitive
Usage	Interior or Exterior
Available Width(s)	60" (1524mm)
Full Roll Length	100 linear feet (30.5m)
Thickness	2 mil
Shading Coefficient	0.82
Visible Light Reflection	22%
Visible Light Transmission	19%
UV Transmission	<1%
Solar Heat Reflection	18%
Solar Energy Absorbed	22%
Glare Reduction	28%
Infra-Red Transmission	36%
U Value	1.09
Emissivity	0.85

#### Product Construction

Face Film	Adhesive	Release Liner
2 mil polyester	Clear, Pressure-sensitive	Silicone

#### Product Details

SOLYX® SXWF-WF White FROST film is designed for application to interior glass, single or double pane and exterior facing glass. This film can also be installed on exterior applications. Made of durable Polyester with a matte, very slight textured, surface, perfect for privacy, decorative or architectural applications. The total nominal thickness is 2 mil (50 micron). Manufactured with a silicone liner, which protects the clear, pressure-sensitive adhesive, and applied using the same tools and techniques for window films.

#### Flammability Rating:

When applied to surfaces- glass or plastic sheet:  
 Horizontal Burn (Flame Spread) ASTM D-635 inch Less than 1.0  
 UL 94 Rating UL 94 UL Classification V-O  
 Class A 0 -25 Flame Spread Index 0 -450 Smoke Developed Index  
 SOLYX Films are suitable for installation onto fire rated glass and will not affect the rating of fire rated glass.

#### Installation and Warranty

##### Installation

Installation should be in accordance with manufacturer's installation instructions.

##### Warranty

This SOLYX® product will be free from defects in material and manufacture for a period of ten (10) years from the date of installation. See warranty information for specific details

#### Product Distribution and Contact Information

##### Distribution

SOLYX® Decorative Films are available through qualified Installing Dealers, Distributors or from Decorative Films, LLC.

Samples submitted upon request.

##### Contact Information

Decorative Films, LLC  
 1-888-657-5224  
[www.decorativefilm.com](http://www.decorativefilm.com)

MADE IN THE USA

