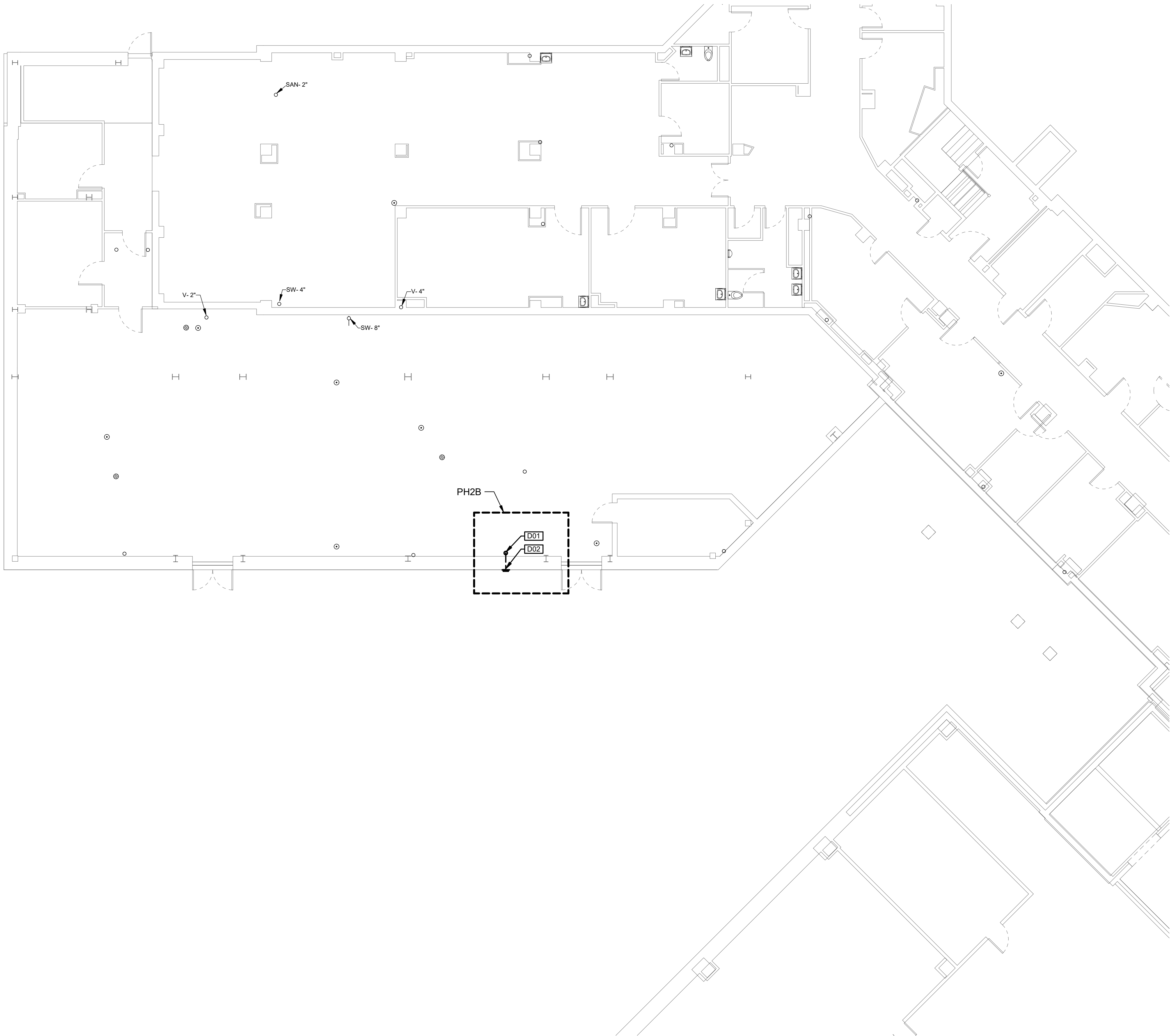
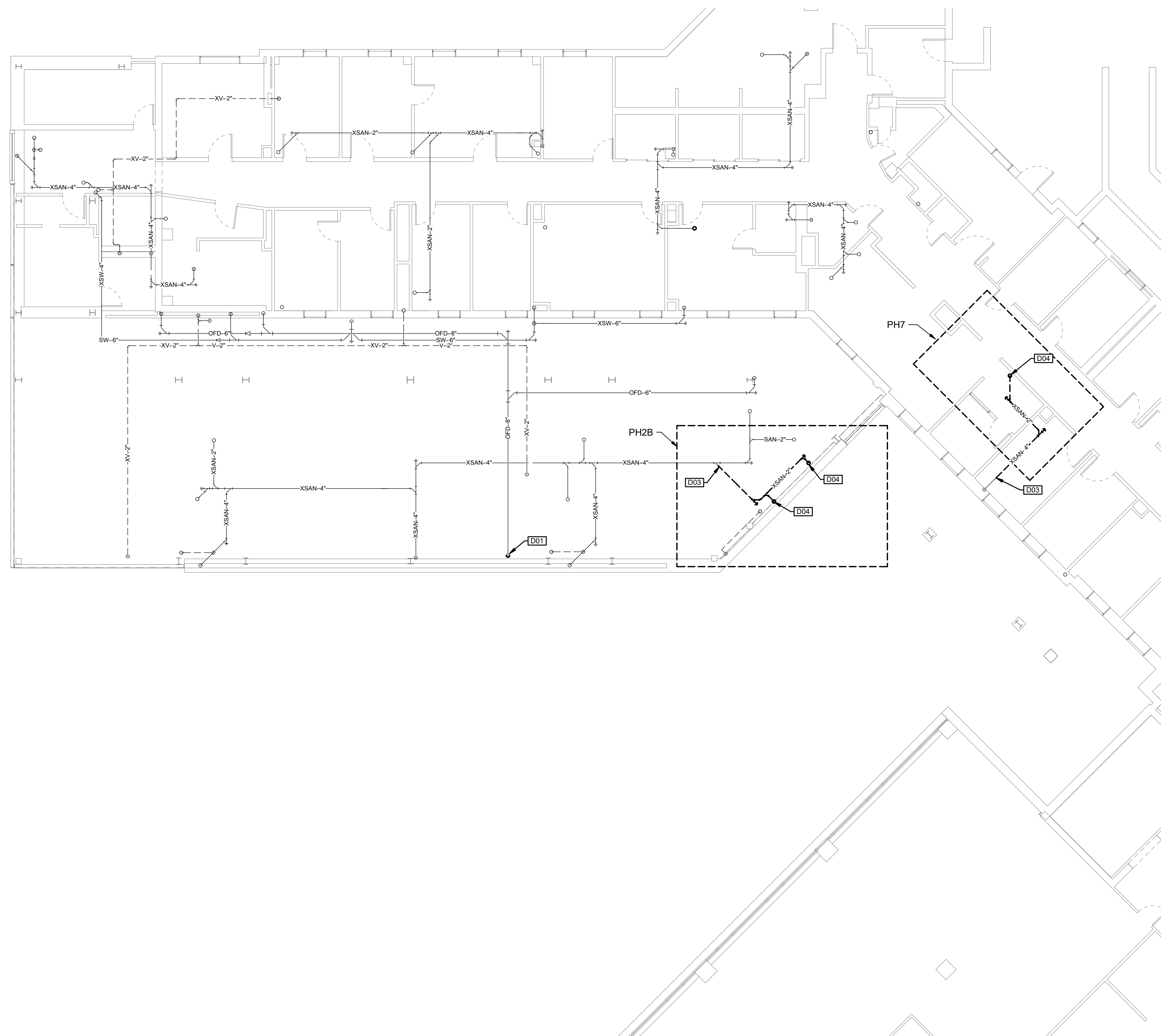


DEMO KEY NOTES	
CODE	DESCRIPTION
D01	DEMOLISH EXISTING 8" OD UP & PREPARE FOR RECONNECTION
D02	DEMOLISH EXISTING 8" OVERFLOW DRAIN OUTLET PATCH EXTERIOR WALL TO MATCH EXISTING
D03	DEMOLISH EXISTING 4" S BACK TO THIS POINT & PREPARE FOR RECONNECTION
D04	DEMOLISH EXISTING 2" W UP
D05	DEMOLISH EXISTING 2" V DN
D06	DEMOLISH EXISTING 2" V BACK TO THIS POINT & CAP
D07	DEMOLISH EXISTING SUPPLY PIPING & ASSOCIATED ACCESSORIES BACK TO THIS POINT & CAP
D08	DEMOLISH EXISTING N2, N02 & ASSOCIATED ACCESSORIES BACK TO THIS POINT & CAP
D09	DEMOLISH EXISTING SUPPLY, GAS PIPING & ASSOCIATED ACCESSORIES
D10	DEMOLISH EXISTING SUPPLY PIPING & ASSOCIATED ACCESSORIES DN
D11	DEMOLISH EXISTING 2-1/2" CW BACK TO THIS PIONT & PREPARE FOR RECONNECTION



DEMO KEY NOTES	
CODE	DESCRIPTION
D01	DEMOLISH EXISTING 8" OD UP & PREPARE FOR RECONNECTION
D02	DEMOLISH EXISTING 8" OVERFLOW DRAIN OUTLET PATCH EXTERIOR WALL TO MATCH EXISTING
D03	DEMOLISH EXISTING 4" S BACK TO THIS POINT & PREPARE FOR RECONNECTION
D04	DEMOLISH EXISTING 2" W UP
D05	DEMOLISH EXISTING 2" V DN
D06	DEMOLISH EXISTING 2" V BACK TO THIS POINT & CAP
D07	DEMOLISH EXISTING SUPPLY PIPING & ASSOCIATED ACCESSORIES BACK TO THIS POINT & CAP
D08	DEMOLISH EXISTING N2, N02 & ASSOCIATED ACCESSORIES BACK TO THIS POINT & CAP
D09	DEMOLISH EXISTING SUPPLY, GAS PIPING & ASSOCIATED ACCESSORIES
D10	DEMOLISH EXISTING SUPPLY PIPING & ASSOCIATED ACCESSORIES DN
D11	DEMOLISH EXISTING 2-1/2" CW BACK TO THIS POINT & PREPARE FOR RECONNECTION



1 FIRST FLOOR DRAINAGE DEMOLITION
SCALE: 1/8" = 1'-0"

SCALE:

[illegible]

CONSULTANT

STAMP

Office of
Construction
and Facilities
Management

VA | U.S. Department
of Veterans
Affairs

Phase	FINAL CONSTRUCTION DOCUMENTS
	SPRINKLERED

Project Number	650-337
Building Number	1
Drawing Number	P05.2

DEMO KEY NOTES	
CODE	DESCRIPTION
D01	DEMOLISH EXISTING 8" OD UP & PREPARE FOR RECONNECTION
D02	DEMOLISH EXISTING 8" OVERFLOW DRAIN OUTLET PATCH EXTERIOR WALL TO MATCH EXISTING
D03	DEMOLISH EXISTING 4" S BACK TO THIS POINT & PREPARE FOR RECONNECTION
D04	DEMOLISH EXISTING 2" W UP
D05	DEMOLISH EXISTING 2" V DN
D06	DEMOLISH EXISTING 2" V BACK TO THIS POINT & CAP
D07	DEMOLISH EXISTING SUPPLY PIPING & ASSOCIATED ACCESSORIES BACK TO THIS POINT & CAP
D08	DEMOLISH EXISTING N2, N02 & ASSOCIATED ACCESSORIES BACK TO THIS POINT & CAP
D09	DEMOLISH EXISTING SUPPLY, GAS PIPING & ASSOCIATED ACCESSORIES
D10	DEMOLISH EXISTING SUPPLY PIPING & ASSOCIATED ACCESSORIES DN
D11	DEMOLISH EXISTING 2-1/2" CW BACK TO THIS POINT & PREPARE FOR RECONNECTION

1 SECOND FLOOR DRAINAGE DEMOLITION

SCALE:

[illegible]

ARCHITECT/ENGINEER OF RECORD

Auburn, ME
207.784.5100

Portland, ME
207.775.0053

Portsmouth, NH
603.626.1242

Boston, MA
617.426.5050

© 2019 HA PROJECT NUMBER: 13586

STAMP

Office of
Construction
and Facilities
Management

U.S. Department
of Veterans
Affairs

	Drawing Title
--	---------------

Approved:

Phase

SPRINKLERED

	Project Title
--	---------------

Location	PROVIDENCE, RHODE ISLAND
----------	--------------------------

Issue Date
02-22-19

Checked
CG

Draw	MAN
------	-----

Project Number

	Drawing Number

P05.3

A

B

C

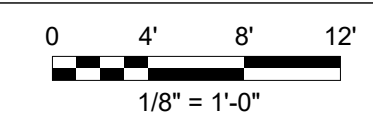
D

E

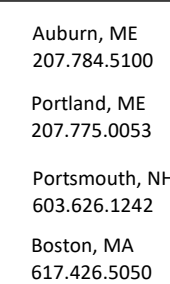
F



SCALE:


[illegible]

ARCHITECT/ENGINEER OF RECORD



© 2019 HA PROJECT NUMBER: 13586

CLIFTON W. GREIM

No.  8158

**REGISTERED
PROFESSIONAL ENGINEER
(MECHANICAL)**

Drawing Title

SECOND FLOOR SUPPLY
DEMOLITION

Approved:

Phase	FINAL CONSTRUCTION DOCUMENTS
-------	------------------------------

SPRINKLERED

Project Title	CONSTRUCT CLEAN CORE ADDITION TO SURGICAL SUITE
---------------	---

Location	PROVIDENCE, RHODE ISLAND
----------	--------------------------

Issue Date	02-22-19
------------	----------

Checked
CG

Drawn
MAM

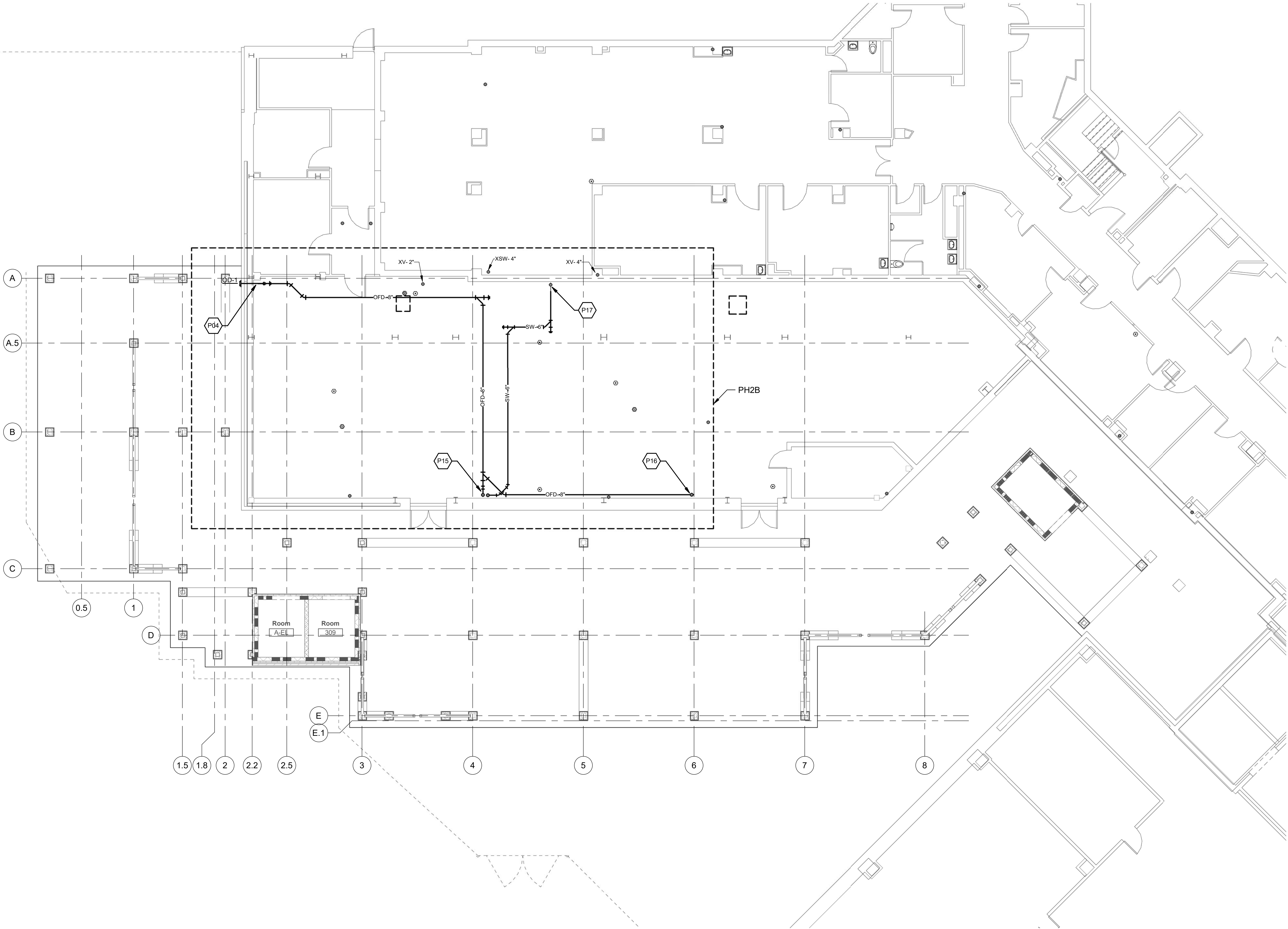
Project Number
650-337

Building Number
1

Drawing Number

P06.1

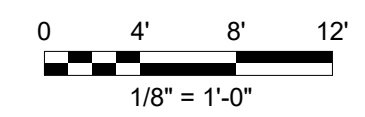
KEY NOTES	
CODE	DESCRIPTION
P01	2" W UP
P02	2" V UP
P03	4" S UP
P04	8" OD UP
P05	2" W & 1-1/2" V DN
P06	2" W IN WALL & 1-1/2" V DN
P07	4" S DN
P08	2" V DN
P09	2" V UP 3" VTR
P10	3" V UP 4" VTR
P11	2" W DN
P12	3" VTR
P13	4" VTR
P14	6" OD & 6" SD DN
P15	6" OD & 6" SD UP
P16	CONNECT 8" OD TO EXISTING 8" OD
P17	CONNECT 6" SD TO EXISTING
P18	3" SD UP TO 3" RD
P19	3" OD UP TO 3" RD
P20	3" W UP
P21	EXISTING ROOF DRAIN TO REMAIN
P22	PROVIDE MEDICAL GAS VALVE BOX & ALARM PANEL REFER TO SPECIFICATIONS FOR MANUFACTURERS & MODELS. COORDINATE EXACT LOCATION OF ALARM PANEL WITH ELECTRICAL CONTRACTOR
P23	1/2" A, OX, VA, WAGD, NO2 & N2 DN TO BOOM
P24	1/2" HW & CW DN
P25	1/2" HW & CW DN
P26	1/2" CO2 NO2, WAGD, A, OX, VA, N2 DN TO RETRACTABLE CEILING COLUMN
P27	PROVIDE ISOLATION VALVE, MAKE FINAL CONNECTIONS TO TWO EVAC UNITS REFER TO MANUFACTURERS INSTALLATION MANUAL
P28	3/4" TEMPERED WATER FROM MIXING VALVE DN. RUN PIPE IN WALL TO BACKFLOW PREVENTER LOCATION
P29	1" DCWR DN
P30	CONNECT TO EXISTING 1" CHWR RISER
P31	1" DCWR UP



1 GROUND FLOOR DRAINAGE

SCALE: 1/8" = 1'-0"

SCALE:



Revisions:

Date:

CONSULTANT

ARCHITECT/ENGINEER OF RECORD

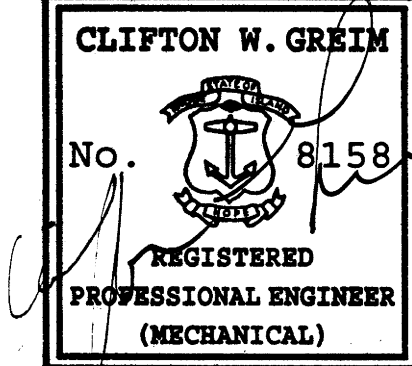


Auburn, ME
207.784.5100
Portland, ME
207.775.0053
Portsmouth, NH
603.636.1242
Boston, MA
617.426.5050

© 2019

HA PROJECT NUMBER: 13586

STAMP



Office of
Construction
and Facilities
Management



U.S. Department
of Veterans
Affairs

Drawing Title

GROUND FLOOR DRAINAGE

Approved:

Phase

FINAL CONSTRUCTION
DOCUMENTS

SPRINKLERED

Project Title

CONSTRUCT CLEAN CORE ADDITION TO
SURGICAL SUITE

Location

PROVIDENCE, RHODE ISLAND

Issue Date

02-22-19

Checked

CG

Drawn

MAM

Project Number

650-337

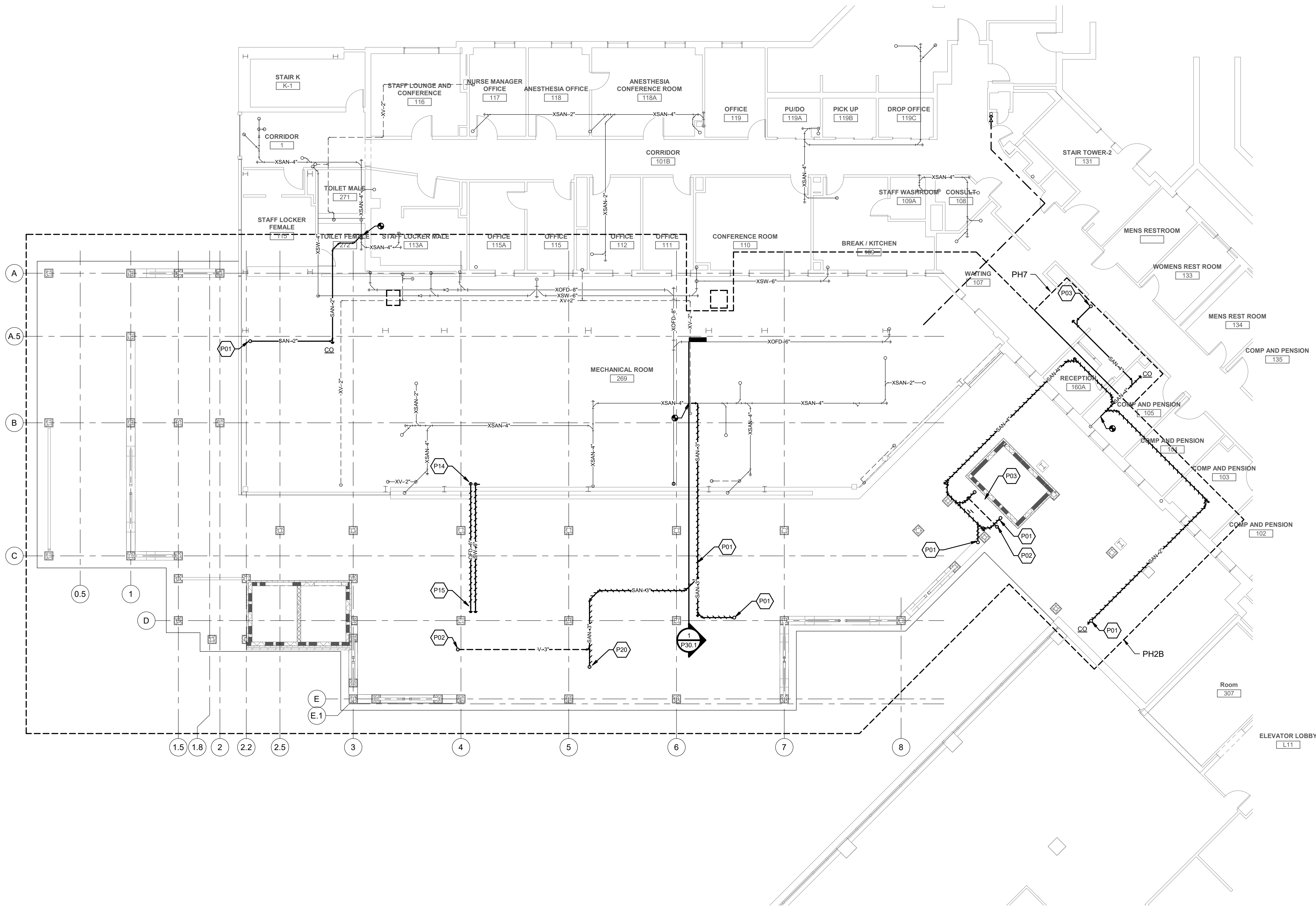
Building Number

1

Drawing Number

P10.1

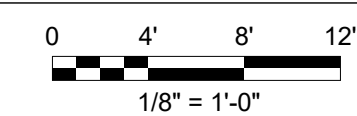
KEY NOTES	
CODE	DESCRIPTION
P01	2" W UP
P02	2" V UP
P03	4" S UP
P04	8" OD UP
P05	2" W & 1-1/2" V DN
P06	2" W IN WALL & 1-1/2" V DN
P07	4" S DN
P08	2" V DN
P09	2" V UP 3" VTR
P10	3" V UP 4" VTR
P11	2" W DN
P12	3" VTR
P13	4" VTR
P14	6" OD & 6" SD DN
P15	6" OD & 6" SD UP
P16	CONNECT 8" OD TO EXISTING 8" OD
P17	CONNECT 6" SD TO EXISTING
P18	3" SD UP TO 3" RD
P19	3" OD UP TO 3" RD
P20	3" W UP
P21	EXISTING ROOF DRAIN TO REMAIN
P22	PROVIDE MEDICAL GAS VALVE BOX & ALARM PANEL REFER TO SPECIFICATIONS FOR MANUFACTURERS & MODELS. COORDINATE EXACT LOCATION OF ALARM PANEL WITH ELECTRICAL CONTRACTOR
P23	1/2" A, OX, VA, WAGD, NO2 & N2 DN TO BOOM
P24	1/2" HW & CW DN
P25	1/2" HW & CW DN
P26	1/2" CO2, NO2, WAGD, A, OX, VA, N2 DN TO RETRACTABLE CEILING COLUMN
P27	PROVIDE ISOLATION VALVE. MAKE FINAL CONNECTIONS TO TWO EVAC UNITS REFER TO MANUFACTURERS INSTALLATION MANUAL
P28	3/4" TEMPERED WATER FROM MIXING VALVE DN. RUN PIPE IN WALL TO BACKFLOW PREVENTER LOCATION
P29	1" DCWR DN
P30	CONNECT TO EXISTING 1" CHWR RISER
P31	1" DCWR UP



1 FIRST FLOOR DRAINAGE

SCALE: 1/8" = 1'-0"

SCALE:



Revisions:

Date:

CONSULTANT

ARCHITECT/ENGINEER OF RECORD

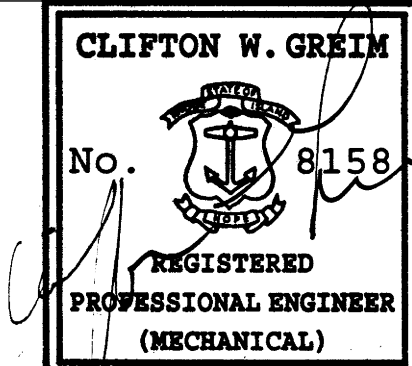


Auburn, ME
207.784.5100
Portland, ME
207.775.0053
Portsmouth, NH
603.636.1242
Boston, MA
617.426.5050

© 2019

HA PROJECT NUMBER: 13586

STAMP



Office of
Construction
and Facilities
Management



U.S. Department
of Veterans
Affairs

Drawing Title
FIRST FLOOR DRAINAGE

Approved:

Phase
FINAL CONSTRUCTION
DOCUMENTS

SPRINKLERED

Project Title
CONSTRUCT CLEAN CORE ADDITION TO
SURGICAL SUITE

Location
PROVIDENCE, RHODE ISLAND

Issue Date
02-22-19

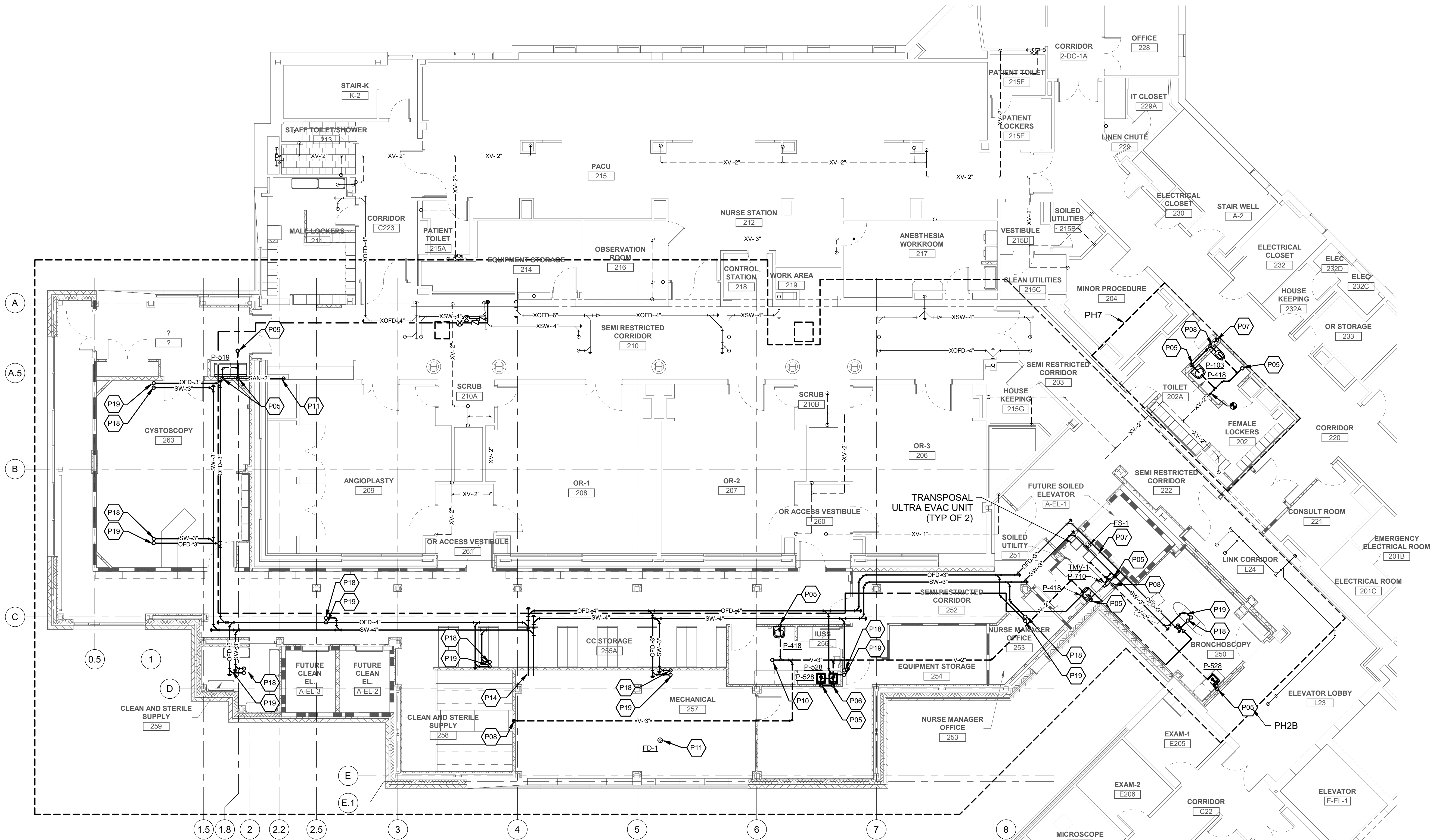
Checked
CG

Drawn
MAM

Project Number
650-337
Building Number
1

Drawing Number
P10.2

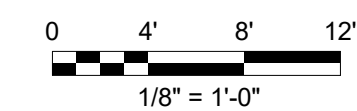
KEY NOTES	
CODE	DESCRIPTION
P01	2" W UP
P02	2" V UP
P03	4" S UP
P04	8" OD UP
P05	2" W & 1-1/2" V DN
P06	2" W IN WALL & 1-1/2" V DN
P07	4" S DN
P08	2" V DN
P09	2" V UP 3" VTR
P10	3" V UP 4" VTR
P11	2" W DN
P12	3" VTR
P13	4" VTR
P14	6" OD & 6" SD DN
P15	6" OD & 6" SD UP
P16	CONNECT 8" OD TO EXISTING 8" OD
P17	CONNECT 6" SD TO EXISTING
P18	3" SD UP TO 3" RD
P19	3" OD UP TO 3" RD
P20	3" W UP
P21	EXISTING ROOF DRAIN TO REMAIN
P22	PROVIDE MEDICAL GAS VALVE BOX & ALARM PANEL REFER TO SPECIFICATIONS FOR MANUFACTURERS & MODELS. COORDINATE EXACT LOCATION OF ALARM PANEL WITH ELECTRICAL CONTRACTOR
P23	1/2" A, OX, VA, WAGD, NO2 & N2 DN TO BOOM
P24	1/2" HW & CW DN
P25	1/2" HW & CW DN
P26	1/2" CO2, NO2, WAGD, A, OX, VA, N2 DN TO RETRACTABLE CEILING COLUMN
P27	PROVIDE ISOLATION VALVE, MAKE FINAL CONNECTIONS TO TWO EVAC UNITS REFER TO MANUFACTURERS INSTALLATION MANUAL
P28	3/4" TEMPERED WATER FROM MIXING VALVE DN. RUN PIPE IN WALL TO BACKFLOW PREVENTER LOCATION
P29	1" DCWR DN
P30	CONNECT TO EXISTING 1" CHWR RISER
P31	1" DCWR UP



1 SECOND FLOOR DRAINAGE

SCALE: 1/8" = 1'-0"

SCALE:

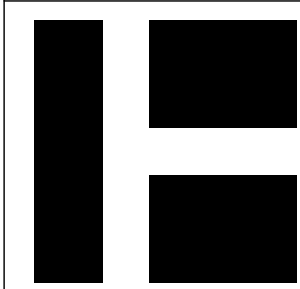


Revisions:

Date:

CONSULTANT

ARCHITECT/ENGINEER OF RECORD



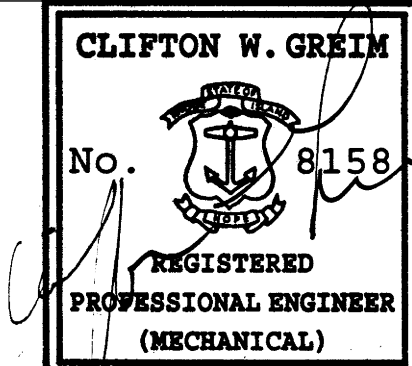
HARRIMAN

Auburn, ME
207.784.5100
Portland, ME
207.775.0053
Portsmouth, NH
603.636.1242
Boston, MA
617.426.5050

© 2019

HA PROJECT NUMBER: 13586

STAMP



Office of
Construction
and Facilities
Management



U.S. Department
of Veterans
Affairs

Drawing Title

SECOND FLOOR DRAINAGE

Approved:

Phase

FINAL CONSTRUCTION
DOCUMENTS

SPRINKLERED

Project Title

CONSTRUCT CLEAN CORE ADDITION TO
SURGICAL SUITE

Location

PROVIDENCE, RHODE ISLAND

Issue Date

02-22-19

Checked

CG

Drawn

MAM

Project Number

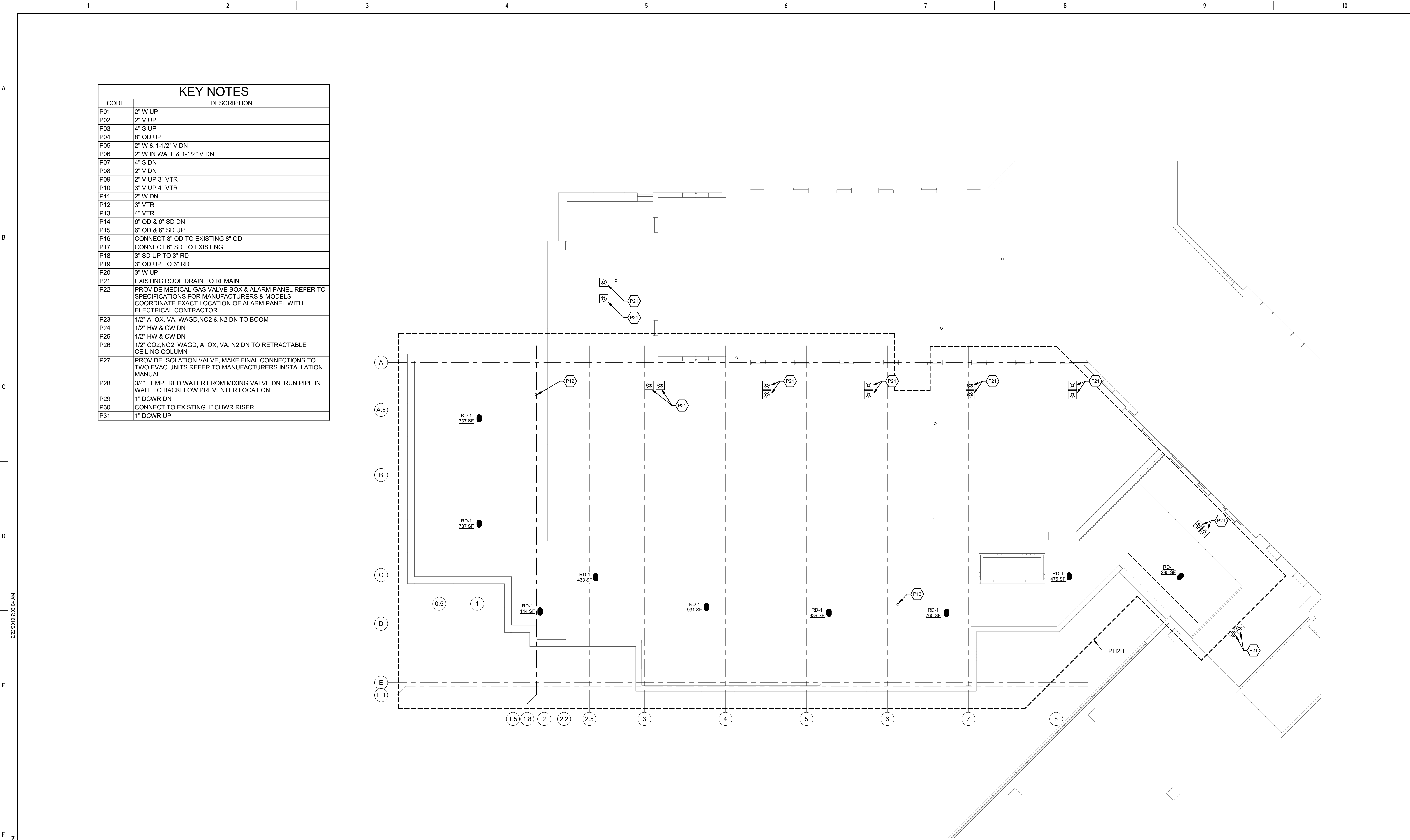
650-337

Building Number

1

Drawing Number

P10.3

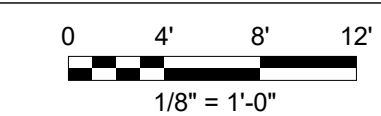


KEY NOTES	
CODE	DESCRIPTION
P01	2" W UP
P02	2" V UP
P03	4" S UP
P04	8" OD UP
P05	2" W & 1-1/2" V DN
P06	2" W IN WALL & 1-1/2" V DN
P07	4" S DN
P08	2" V DN
P09	2" V UP 3" VTR
P10	3" V UP 4" VTR
P11	2" W DN
P12	3" VTR
P13	4" VTR
P14	6" OD & 6" SD DN
P15	6" OD & 6" SD UP
P16	CONNECT 8" OD TO EXISTING 8" OD
P17	CONNECT 6" SD TO EXISTING
P18	3" SD UP TO 3" RD
P19	3" OD UP TO 3" RD
P20	3" W UP
P21	EXISTING ROOF DRAIN TO REMAIN
P22	PROVIDE MEDICAL GAS VALVE BOX & ALARM PANEL REFER TO SPECIFICATIONS FOR MANUFACTURERS & MODELS. COORDINATE EXACT LOCATION OF ALARM PANEL WITH ELECTRICAL CONTRACTOR
P23	1/2" A, OX, VA, WAGD, NO2 & N2 DN TO BOOM
P24	1/2" HW & CW DN
P25	1/2" HW & CW DN
P26	1/2" CO2 NO2, WAGD, A, OX, VA, N2 DN TO RETRACTABLE CEILING COLUMN
P27	PROVIDE ISOLATION VALVE, MAKE FINAL CONNECTIONS TO TWO EVAC UNITS REFER TO MANUFACTURERS INSTALLATION MANUAL
P28	3/4" TEMPERED WATER FROM MIXING VALVE DN. RUN PIPE IN WALL TO BACKFLOW PREVENTER LOCATION
P29	1" DCWR DN
P30	CONNECT TO EXISTING 1" CHWR RISER
P31	1" DCWR UP

1 ROOF PLAN

SCALE: 1/8" = 1'-0"

SCALE:



CONSULTANT

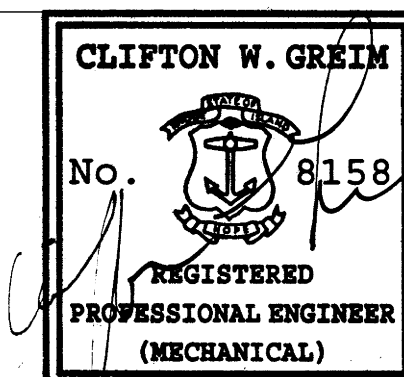
ARCHITECT/ENGINEER OF RECORD

Autumn, ME
207.784.5100
Portland, ME
207.775.0053
Portsmouth, NH
603.636.1242
Boston, MA
617.426.5050

© 2019

HA PROJECT NUMBER: 13586

STAMP



Office of
Construction
and Facilities
Management

U.S. Department
of Veterans
Affairs

Drawing Title

ROOF PLAN

Approved:

Phase

FINAL CONSTRUCTION
DOCUMENTS

SPRINKLERED

Project Title

CONSTRUCT CLEAN CORE ADDITION TO
SURGICAL SUITE

Location

PROVIDENCE, RHODE ISLAND

Issue Date

02-22-19

Checked

CG

Drawn

MAM

Project Number

650-337

Building Number

1

Drawing Number

P10.4

A

B

C

D

F

F

A

B

C

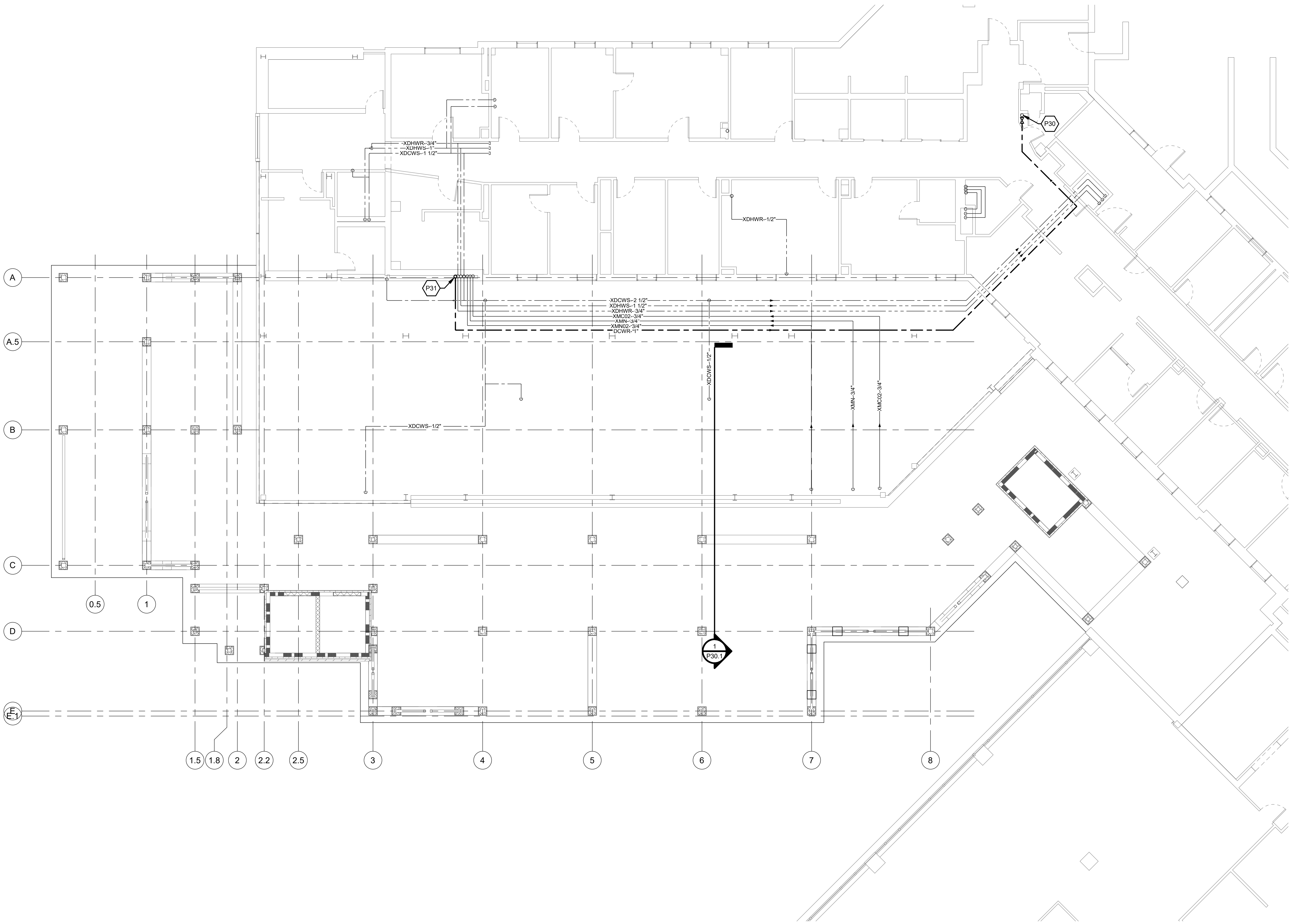
D

E

F

KEY NOTES

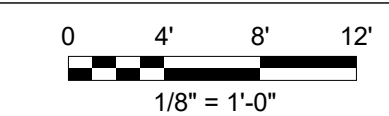
CODE	DESCRIPTION
P01	2" W UP
P02	2" V UP
P03	4" S UP
P04	8" OD UP
P05	2" W & 1-1/2" V DN
P06	2" W IN WALL & 1-1/2" V DN
P07	4" S DN
P08	2" V DN
P09	2" V UP 3" VTR
P10	3" V UP 4" VTR
P11	2" W DN
P12	3" VTR
P13	4" VTR
P14	6" OD & 6" SD DN
P15	6" OD & 6" SD UP
P16	CONNECT 8" OD TO EXISTING 8" OD
P17	CONNECT 6" SD TO EXISTING
P18	3" SD UP TO 3" RD
P19	3" OD UP TO 3" RD
P20	3" W UP
P21	EXISTING ROOF DRAIN TO REMAIN
P22	PROVIDE MEDICAL GAS VALVE BOX & ALARM PANEL REFER TO SPECIFICATIONS FOR MANUFACTURERS & MODELS. COORDINATE EXACT LOCATION OF ALARM PANEL WITH ELECTRICAL CONTRACTOR
P23	1/2" A, OX, VA, WAGD, NO2 & N2 DN TO BOOM
P24	1/2" HW & CW DN
P25	1/2" HW & CW DN
P26	1/2" CO2, NO2, WAGD, A, OX, VA, N2 DN TO RETRACTABLE CEILING COLUMN
P27	PROVIDE ISOLATION VALVE, MAKE FINAL CONNECTIONS TO TWO EVAC UNITS REFER TO MANUFACTURERS INSTALLATION MANUAL
P28	3/4" TEMPERED WATER FROM MIXING VALVE DN. RUN PIPE IN WALL TO BACKFLOW PREVENTER LOCATION
P29	1" DCWR DN
P30	CONNECT TO EXISTING 1" CHWR RISER
P31	1" DCWR UP



1 FIRST FLOOR SUPPLY

SCALE: 1/8" = 1'-0"

SCALE:



Revisions:

Date:

CONSULTANT

ARCHITECT/ENGINEER OF RECORD

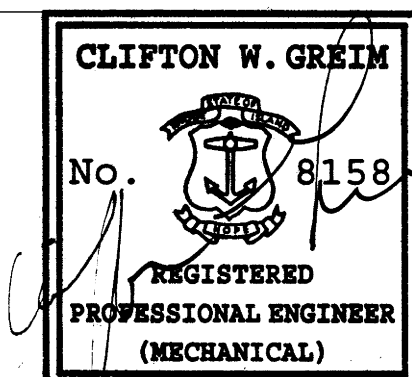


Auburn, ME
207.784.5100
Portland, ME
207.775.0053
Portsmouth, NH
603.636.1242
Boston, MA
617.426.5050

© 2019

HA PROJECT NUMBER: 13586

STAMP



Office of
Construction
and Facilities
Management



U.S. Department
of Veterans
Affairs

Drawing Title

FIRST FLOOR SUPPLY

Approved:

Phase

FINAL CONSTRUCTION
DOCUMENTS

SPRINKLERED

Project Title

CONSTRUCT CLEAN CORE ADDITION TO
SURGICAL SUITE

Location

PROVIDENCE, RHODE ISLAND

Issue Date

02-22-19

Checked

CG

Drawn

MAM

Project Number

650-337

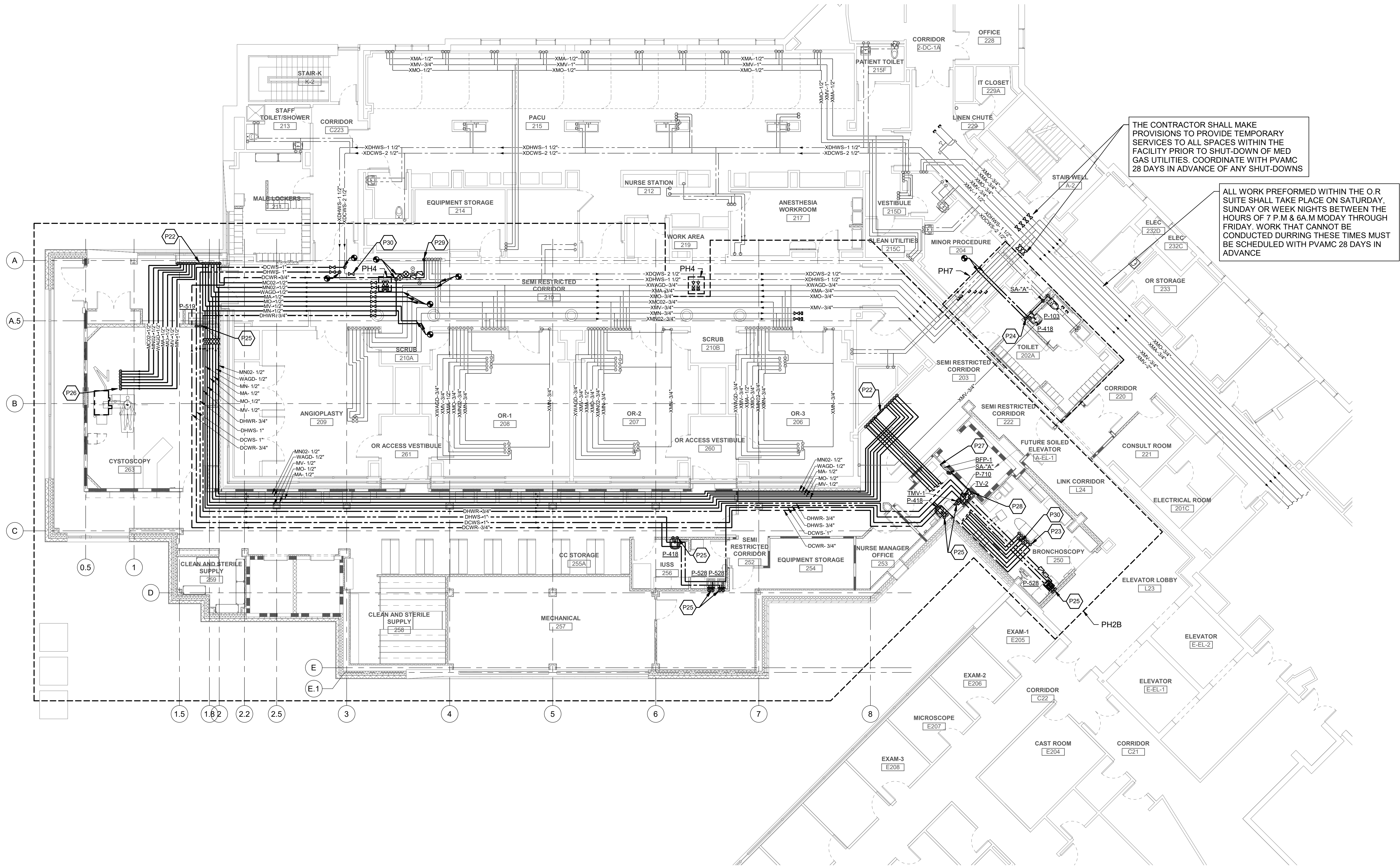
Building Number

1

Drawing Number

P20.1

KEY NOTES	
CODE	DESCRIPTION
P01	2" W UP
P02	2" V UP
P03	4" S UP
P04	8" OD UP
P05	2" W & 1-1/2" V DN
P06	2" W IN WALL & 1-1/2" V DN
P07	4" S DN
P08	2" V DN
P09	2" V UP 3" VTR
P10	3" V UP 4" VTR
P11	2" W DN
P12	3" VTR
P13	4" VTR
P14	6" OD & 6" SD DN
P15	6" OD & 6" SD UP
P16	CONNECT 8" OD TO EXISTING 8" OD
P17	CONNECT 6" SD TO EXISTING
P18	3" SD UP TO 3" RD
P19	3" OD UP TO 3" RD
P20	3" W UP
P21	EXISTING ROOF DRAIN TO REMAIN
P22	PROVIDE MEDICAL GAS VALVE BOX & ALARM PANEL REFER TO SPECIFICATIONS FOR MANUFACTURERS & MODELS. COORDINATE EXACT LOCATION OF ALARM PANEL WITH ELECTRICAL CONTRACTOR
P23	1/2" A, OX, VA, WAGD, NO2 & N2 DN TO BOOM
P24	1/2" HW & CW DN
P25	1/2" HW & CW DN
P26	1/2" CO2, NO2, WAGD, A, OX, VA, N2 DN TO RETRACTABLE CEILING COLUMN
P27	PROVIDE ISOLATION VALVE, MAKE FINAL CONNECTIONS TO TWO EVAC UNITS REFER TO MANUFACTURERS INSTALLATION MANUAL
P28	3/4" TEMPERED WATER FROM MIXING VALVE DN. RUN PIPE IN WALL TO BACKFLOW PREVENTER LOCATION
P29	1" DCWR DN
P30	CONNECT TO EXISTING 1" CHWR RISER
P31	1" DCWR UP



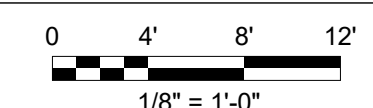
THE CONTRACTOR SHALL MAKE PROVISIONS TO PROVIDE TEMPORARY SERVICES TO ALL SPACES WITHIN THE FACILITY PRIOR TO SHUT-DOWN OF MED GAS UTILITIES. COORDINATE WITH PVAMC 28 DAYS IN ADVANCE OF ANY SHUT-DOWNS

ALL WORK PERFORMED WITHIN THE O.R SUITE SHALL TAKE PLACE ON SATURDAY, SUNDAY OR WEEK NIGHTS BETWEEN THE HOURS OF 7 P.M. & 6 A.M. MODAY THROUGH FRIDAY. WORK THAT CANNOT BE CONDUCTED DURING THESE TIMES MUST BE SCHEDULED WITH PVAMC 28 DAYS IN ADVANCE

1 SECOND FLOOR SUPPLY

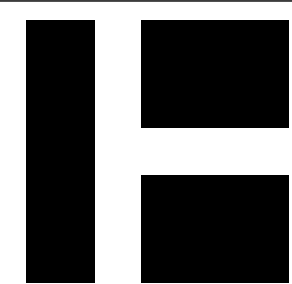
SCALE: 1/8" = 1'-0"

SCALE:



CONSULTANT

ARCHITECT/ENGINEER OF RECORD



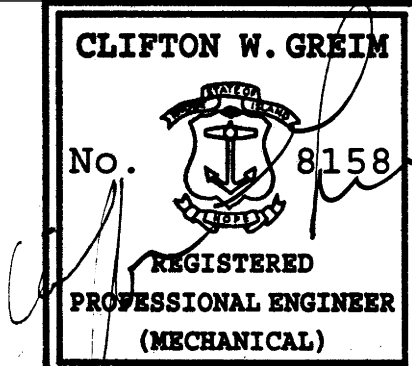
HARRIMAN

Auburn, ME
207.784.5100
Portland, ME
207.775.0053
Portland, ME
603.636.1242
Boston, MA
617.426.5050

© 2019

HA PROJECT NUMBER: 13586

STAMP



Office of
Construction
and Facilities
Management



U.S. Department
of Veterans
Affairs

Drawing Title

SECOND FLOOR SUPPLY

Approved:

Phase

FINAL CONSTRUCTION
DOCUMENTS

SPRINKLERED

Project Title

CONSTRUCT CLEAN CORE ADDITION TO
SURGICAL SUITE

Location

PROVIDENCE, RHODE ISLAND

Issue Date

02-22-19

Checked

CG

Drawn

MAM

Project Number

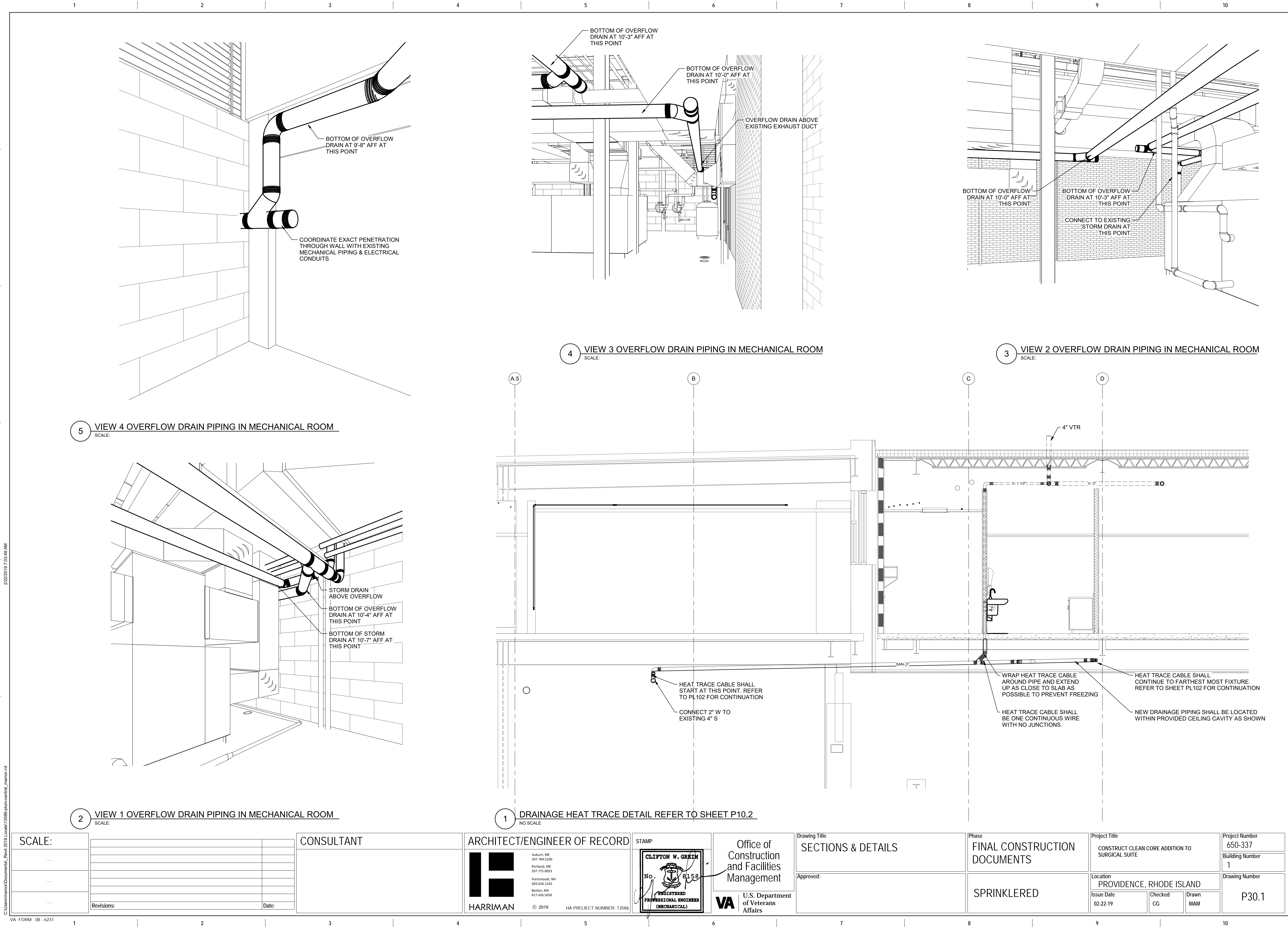
650-337

Building Number

1

Drawing Number

P20.2



SCALE:			CONSULTANT	ARCHITECT/ENGINEER OF RECORD	STAMP	Office of Construction and Facilities Management	Drawing Title SECTIONS & DETAILS	Phase FINAL CONSTRUCTION DOCUMENTS	Project Title CONSTRUCT CLEAN CORE ADDITION TO SURGICAL SUITE	Project Number 650-337					
—		Revisions:									Date:	Building Number 1			
—															
—															
—				HARRIMAN		© 2019		HA PROJECT NUMBER: 13586		U.S. Department of Veterans Affairs	Approved:	SPRINKLERED	Location PROVIDENCE, RHODE ISLAND		Drawing Number P30.1
								Issue Date 02-22-19					Checked CG	Drawn MAM	