

Project Name:

Unit Model #: **J40YDC00A4GAA2**

Quantity: **1** Tag #: **CU-1**

System: **J40YDC00A4GAA2**

Cooling Performance

Total gross capacity	468.8 MBH
Sensible gross capacity	.0 MBH
Total net capacity	468.8 MBH
Efficiency (at ARI)	EER
Ambient DB temp.	95.0 °F
Power input (w/o blower)	37.38 kW
Suction pressure	130 psig
Saturated suction temp.	45 °F

Refrigerant

Refrigerant type	R-410A
------------------	--------

Electrical Data

Power supply	460-3-60
Unit min circuit ampacity	82.6 Amps
Unit max over-current protection	90 Amps

Dimensions & Weight

Hgt	58 in.	Len	129 in.	Wth	89 in.
Weight with factory installed options	2315 lbs.				

Clearances

Right	30 in.	Front	36 in.	Rear	24 in.
Top	120 in.	Bottom	0 in.	Left	30 in.

Note: Please refer to the tech guide for listed maximum static pressures



40 Ton

- JCI units are Manufactured at an ISO 9001 Registered Facility and each Rooftop is Completely Computer-run Tested Prior to Shipment.

Unit Features

- Four Stage Cooling
- Unit Cabinet Constructed of Powder Painted Steel, Certified At 750 Hours Salt Spray Test (ASTM B-117 Standards)
- Full Perimeter Base rails with Built in Rigging Capabilities
- Dual Circuit 4 Stage Cooling with Scroll Compressor
- Solid Core Liquid Line Filter Driers
- Sweat Connection Fittings
- Single Point Power Connection
- Condenser Coil Guards Standard
- Short Circuit Current: 5kA RMS Symmetrical

Standard Unit Controller: Smart Equipment Control Board

- An Integrated Low-Ambient Control, Anti-short Cycle Protection, Lead-Lag, Fan on and Fan off Delays, Low Voltage Protection, On-board Diagnostic and Fault Code Display
- Safety Monitoring - Monitors the High and Low-Pressure Switches. The Unit Control Board will Alarm on Compressor Lockouts and Repeated Limit Switch Trips

BAS Controller

- Smart Equipment Controller

Warranty

- One (1) Year Limited Warranty on the Complete Unit
- One (1) Year Warranty - Compressors

Project Name:

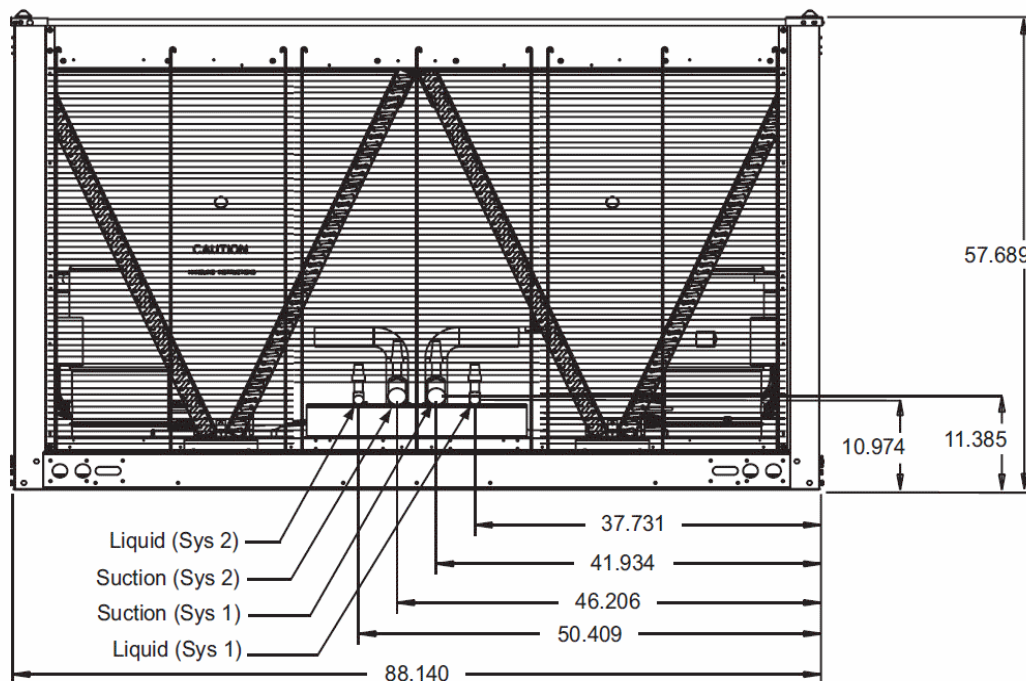
Unit Model #: **J40YDC00A4GAA2**

Quantity: 1 Tag #: **CU-1**

System: **J40YDC00A4GAA2**

Piping and Connection

40 & 50 Ton Piping Connections



Piping And Electrical Connection Sizes (30/40/50T) (Inches)

Connection Entry	Size
Suction Line Sys #1	1-5/8 OD
Liquid Line Sys #1	7/8 OD
Suction Line Sys #2	1-5/8 OD
Liquid Line Sys #2	7/8 OD
Power Wiring Knockout	SEE BELOW
Control Wiring	7/8 HOLE

Electrical Power Knockout Sizes (Inches)

Connection Entry	30-40-50T/230V	30-40-50T/460-575V
Power Wiring	2-1/2"	1-1/2"

Project Name:

Unit Model #: **J40YDC00A4GAA2**

Quantity: 1 Tag #: **CU-1**

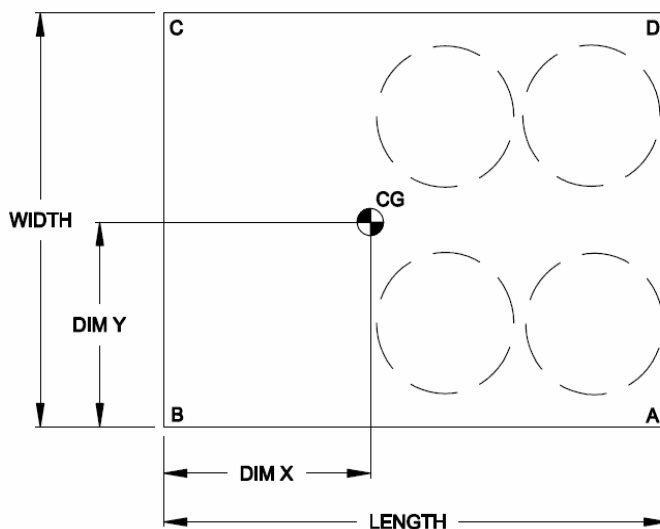
System: **J40YDC00A4GAA2**

Corner Weights & Center of Gravity

Weight And Dimension's

Corner Weights & Center Of Gravity (Inches)

Unit Model	Unit Weight (Lbs.)		Unit Dimensions (Inches)		A	B	C	D	Dim X	Dim Y	Weight A to B	Weight D to C
	Shipping	Operation	Length	Width								
J30YD	1875	1895	128.5	88.5	404	537	533	401	55.2	44.1	934	941
J40YD	2315	2347	128.5	88.5	486	675	671	483	53.8	44.1	1154	1161
J50YD	2345	2381	128.5	88.5	486	693	685	481	53.0	44.0	1166	1179



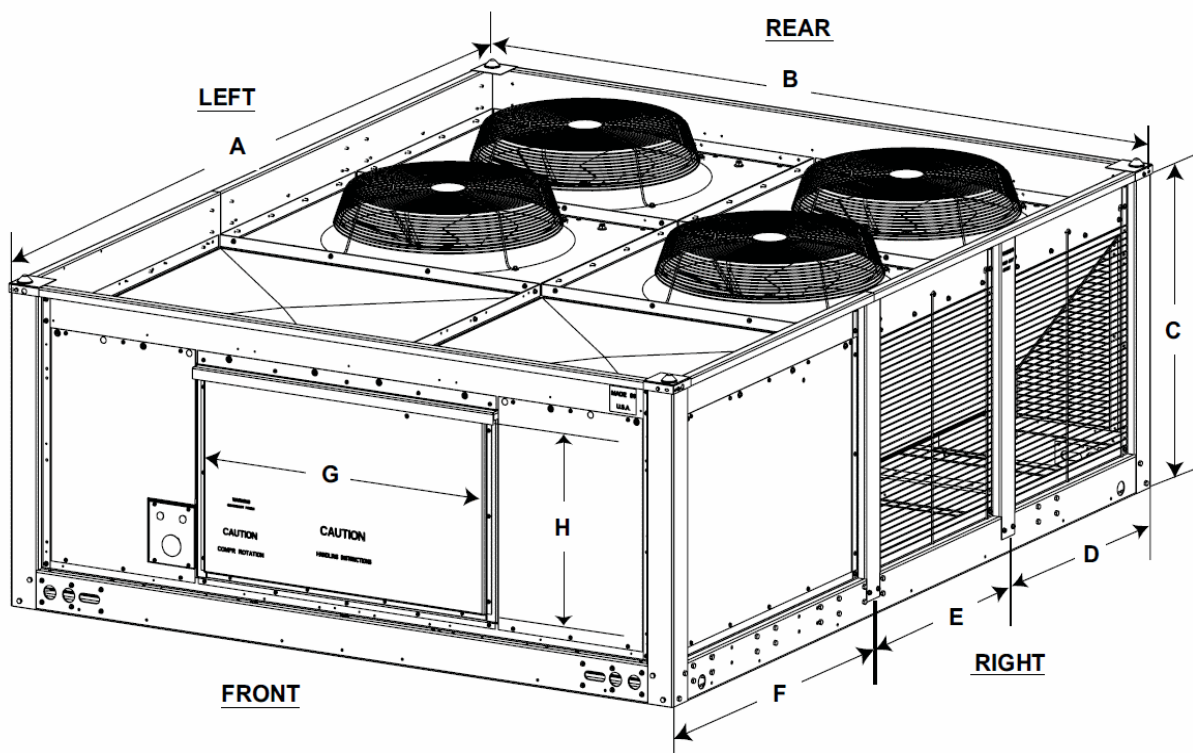
Project Name:

Unit Model #: **J40YDC00A4GAA2**

Quantity: 1 Tag #: **CU-1**

System: **J40YDC00A4GAA2**

Unit Dimensions



J**YD Unit Dimensions

Unit Dimensions (Inches)

Model	A	B	C	D	E	F	G	H
J30YD	128.5	88.5	37.5	41.8	40.0	46.1	37.1	23.6
J40YD	128.5	88.5	57.7	41.8	40.0	46.1	37.1	23.6
J50YD	128.5	88.5	57.7	41.8	40.0	46.1	37.1	23.6

Piping And Electrical Connections

Piping connections are made from the rear of the unit. Connections can be made directly to the suction and liquid line service valves.

Piping can be routed to the unit from the left or right side.

Electrical connections for power and control wiring is made from the front of all units, left of the electrical control box access. See piping sizes and electrical knockout details.

Unit Clearances

Location	Dimensions
Overhead (Top) ¹	120"
Front access panels	36"
Left Side	30"
Right Side	30"
Rear	24"
Bottom ²	0"

¹ Units must be installed outdoors. Overhanging structures or shrubs should not obstruct condenser air discharge.

² Adequate snow clearance must be provided if winter operation is expected.



Series 40 OD Split System

Johnson Controls Split-System R-410A Outdoor

Page: 7

Project Name:

Unit Model #: **J40YDC00A4GAA2**

Quantity: **1** Tag #: **CU-1**

System: **J40YDC00A4GAA2**

Sound Performance

Sound Performance

Outdoor Sound Power Levels (dB), 60 Hz

Model	Nominal Tonnage	dB(A) ¹	Octave Bands (Hz)							
			63	125	250	500	1000	2000	4000	8000
J30YD	30	92	90	93	91	89	87	83	79	74
J40YD	40	92	90	93	91	89	87	84	80	75
J50YD	50	93	91	94	92	90	87	84	80	75

¹ Rated in accordance with ARI 270 Standard.

System: J40YDC00A4GAA2