

1 BASEMENT LIFE SAFETY PLAN
1/8" = 1'-0"

LEGEND

- 1HR FIRE SEPARATION
- 1HR RATED CEILING ASSEMBLY SUPPORTED BY 1HR CONSTRUCTION
- EGRESS PATH
- F.E. FIRE EXTINGUISHER

BUILDING INFORMATION

IBC Building "Use" Groups	Business (B)
NFPA 101 Building Occupancies	Business
Building height	3 Stories
Number of stories below grade	0
Footprint (Approximately)	6,350 ft ²
Construction Type	II-B [IBC], II (000) [NFPA]
Site access	Regent Avenue
Suppression System	Fully sprinklered; NFPA-13 2016 compliant
Fire Alarm System	Addressable; NFPA-72 2016 compliant

HEIGHT AND AREA

IBC Section	Building Height	Building Area (ft ²)
Table 503	3 Stories (55 feet)	23,000
Section 504.2: Automatic Sprinkler Height Increase	1 Story (20 feet)	N/A
Section 506.2: Open Frontage Area Increase (76% Open)	N/A	11,730
Section 506.3: Automatic Sprinkler Area Increase	N/A	46,000
Maximum Permitted per IBC	4 Stories (75 feet)	80,730
Actual Height and Area	3 Stories A	6,350

REQUIRED FIRE RESISTANCE RATING

IBC Table 601:	Rating
Primary Structural Frame	0 hours
Exterior Bearing Walls	0 hours
Interior Bearing Walls	0 hours
Exterior Nonbearing Walls (IBC Table 602)	
FSD < 10 feet	1 hour
FSD > 30 feet	0 hours
Floor construction and secondary members	0 hours
Roof construction and secondary members	0 hours

NFPA 101 Table 8.3.4.2:	Rating	Fire Door
Exit Stairs	1 hour	1 hour
Shafts	1 hour	1 hour
Elevator Shaft	1 hour	1 hour
Other fire barriers	1 hour	¾ hour

ALLOWABLE TRAVEL DISTANCES

Occupancy	Maximum Dead-end Corridor (ft)	Maximum Common Path of Travel (ft)	Maximum Travel Distance (ft)
Business	50	100	300

EGRESS CAPACITY

Floor	Egress Capacity
Basement	Stair 1
	Door - 34"/0.2 = 170 persons
	Stair - 44"/0.3 = 146 persons
Level 1	Main Entrance
	Door - 41"/0.2 = 205 persons
	Stair - 34"/0.2 = 170 persons
Level 2	Stair 1
	Door - 34"/0.2 = 170 persons
	Stair - 44"/0.3 = 146 persons

Travel Distances

Travel Path	Travel Distance
Path 1	86' - 6"
Path 2	137' - 2"
Path 3	120' - 0"
Path 4	126' - 0"
Path 5	114' - 4"

Egress Capacity

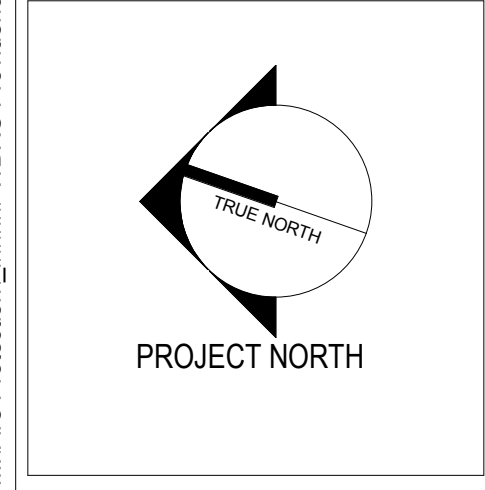
Floor	Egress Capacity
Basement	292 Persons
First	375 Persons
Second	146 Persons

OCCUPANT LOADING

Floor	Use	Area (ft ²)	Occupant Load Factor (ft ² /person)	Occupants
Basement	Business	4,238	100 gross	43
	Waiting / Lounge	481	15 net	33
	Classrooms	890	20 net	45*
	Occupational Therapy	473	100 gross	5
	Storage / Mechanical	268	500 gross	1
	Total			127
Level 1	Business	5,156	100 gross	52
	Waiting / Meeting Room	467	15 net	32
	Storage / Mechanical	240	500 gross	1
	Computer Lab	487	50 net	10
Total			95	
Level 2	Mechanical	1,250	500 gross	3
	Total			3

*Maximum occupancy sign of 49 people to be posted

4/18/2019 9:50:04 AM
M:\Fire Protection\WBRC\Providence Mental Health\AutoCAD\Concept\WBRC_VA_DD.rvt



Revisions:

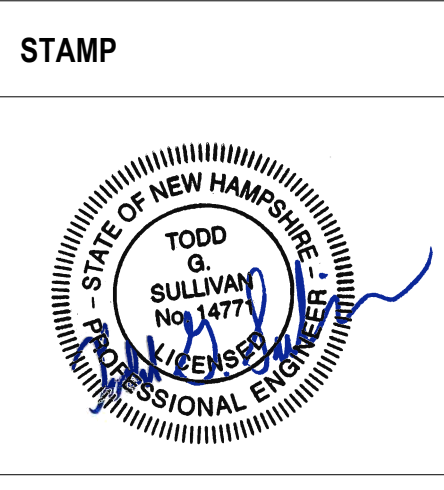
Date: _____

CONSULTANT
Fire Protection Engineering:
SFC Engineering
1 Industrial Drive
Windham, NH, 03087
603-647-8700

ARCHITECT/ENGINEER OF RECORD

WBRC
ARCHITECTS • ENGINEERS

WWW.WBRCAE.COM
BANGOR, MAINE 207-947-4511
PORTLAND, MAINE 207-838-4511
SARASOTA, FLORIDA 941-556-0757



Office of Construction and Facilities Management

VA U.S. Department of Veterans Affairs

Drawing Title
BASEMENT LIFE SAFETY PLAN AND ANALYSIS

Approved:
VA RI FACILITIES MANAGEMENT SERVICE

Phase
CONSTRUCTION DOCUMENTS

FULLY SPRINKLERED

Project Title
NEW MENTAL HEALTH BUILDING - PHASE 1

Project Number
650-332

Building Number
38

Location
830 CHALKSTONE AVE PROVIDENCE, RI 02908

Issue Date
10 APR 2019

Checked
TGS

Drawn
GVR

Drawing Number
LS-101

A

B

C

D

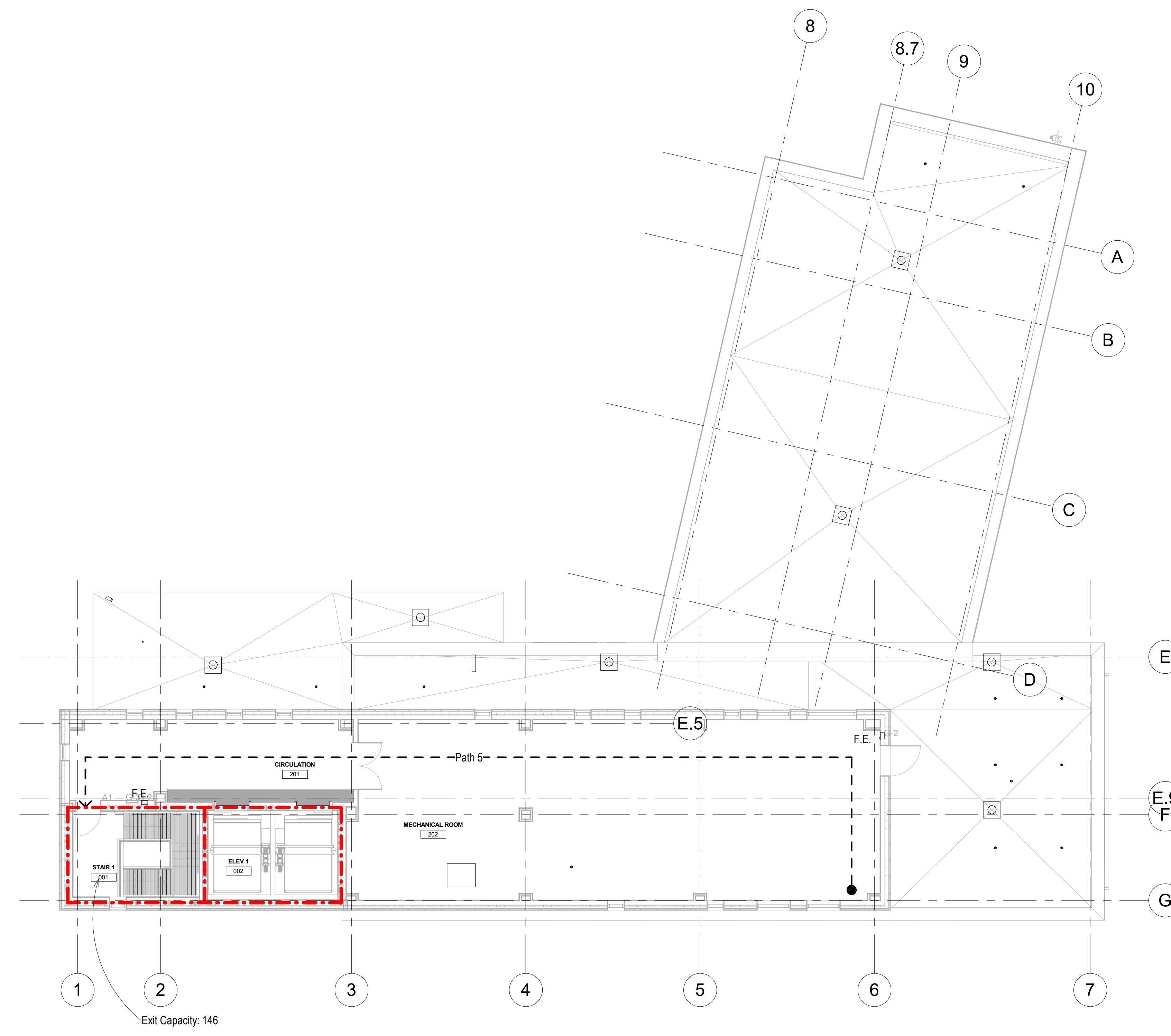
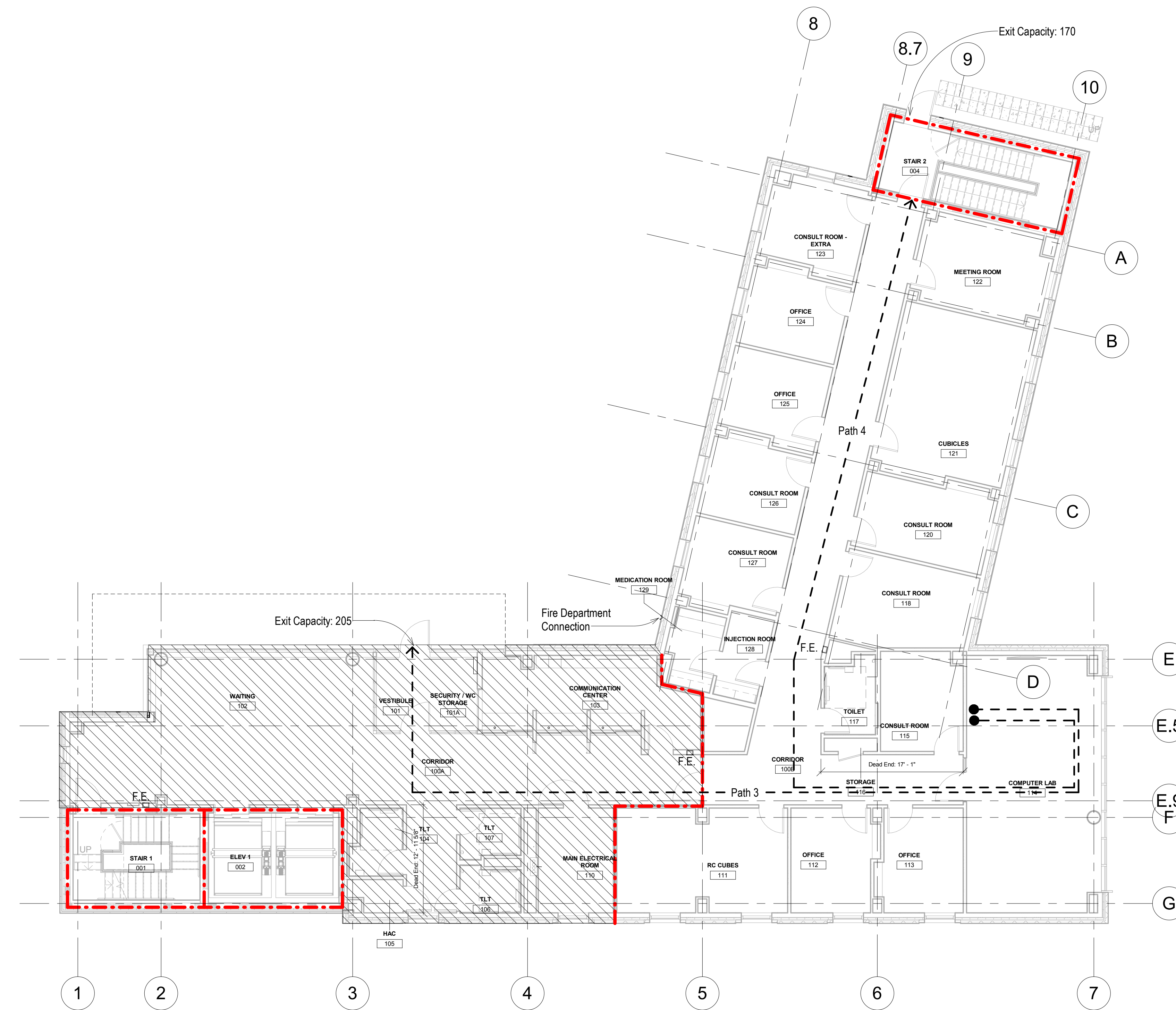
E

F

F

4/18/2019 9:50:07 AM

M:\Fire Protection\WBRC\Providence Mental Health\AutoCAD\Concept\WBRC_VA_DD.rvt

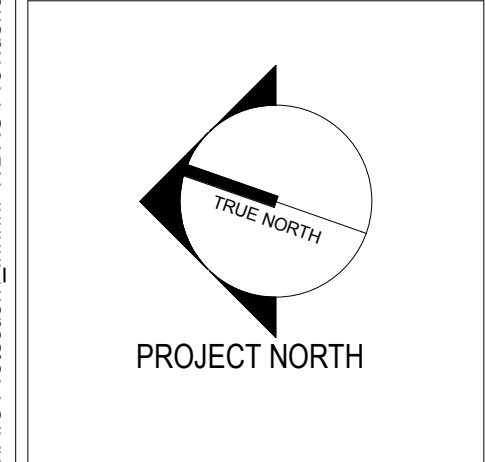


1 FIRST FLOOR LIFE SAFETY PLAN
1/8" = 1'-0"

2 SECOND FLOOR LIFE SAFETY PLAN
1/8" = 1'-0"

- LEGEND**
- 1HR FIRE SEPARATION
 - EGRESS PATH
 - 1HR SLAB SUPPORTED BY 1HR FIREPROOFED CONSTRUCTION
 - F.E. FIRE EXTINGUISHER

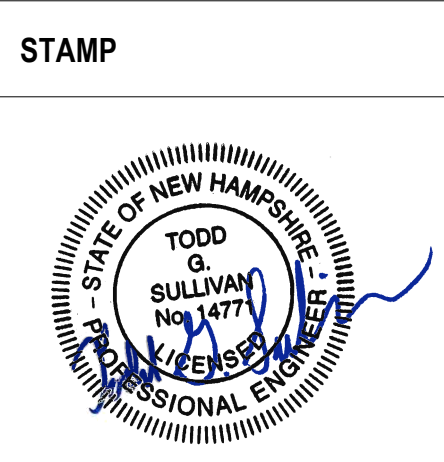
Travel Distances		Floor	Egress Capacity
Travel Path	Travel Distance	Basement	292 Persons
Path 1	86' - 6"	First	375 Persons
Path 2	137' - 2"	Second	146 Persons
Path 3	120' - 0"		
Path 4	126' - 0"		
Path 5	114' - 4"		



Revisions:	Date:

CONSULTANT
Fire Protection Engineering:
SFC Engineering
1 Industrial Drive
Windham, NH, 03087
603-647-8700

ARCHITECT/ENGINEER OF RECORD
WBRC
ARCHITECTS • ENGINEERS
WWW.WBRCAE.COM
BANGOR, MAINE 207-947-4511
PORTLAND, MAINE 207-638-4511
SARASOTA, FLORIDA 941-556-0757



Office of Construction and Facilities Management
VA U.S. Department of Veterans Affairs

Drawing Title
FIRST AND SECOND FLOOR LIFE SAFETY PLANS
Approved:
VA RI FACILITIES MANAGEMENT SERVICE

Phase
CONSTRUCTION DOCUMENTS
FULLY SPRINKLERED

Project Title
NEW MENTAL HEALTH BUILDING - PHASE 1
Location
830 CHALKSTONE AVE PROVIDENCE, RI 02908
Issue Date
10 APR 2019
Checked
TGS
Drawn
GVR

Project Number
650-332
Building Number
38
Drawing Number
LS-102