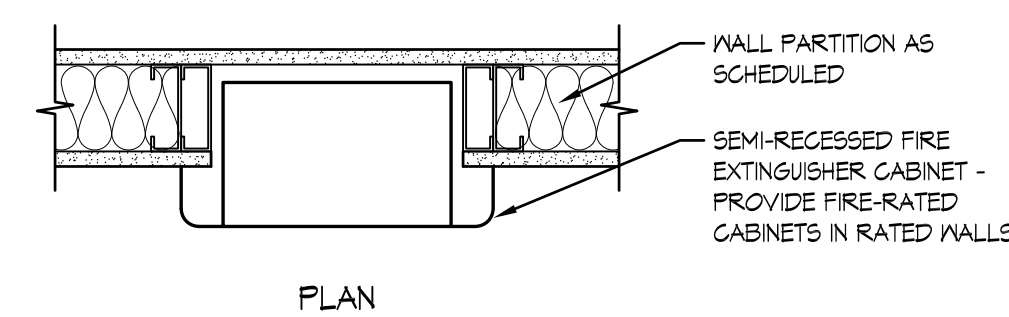


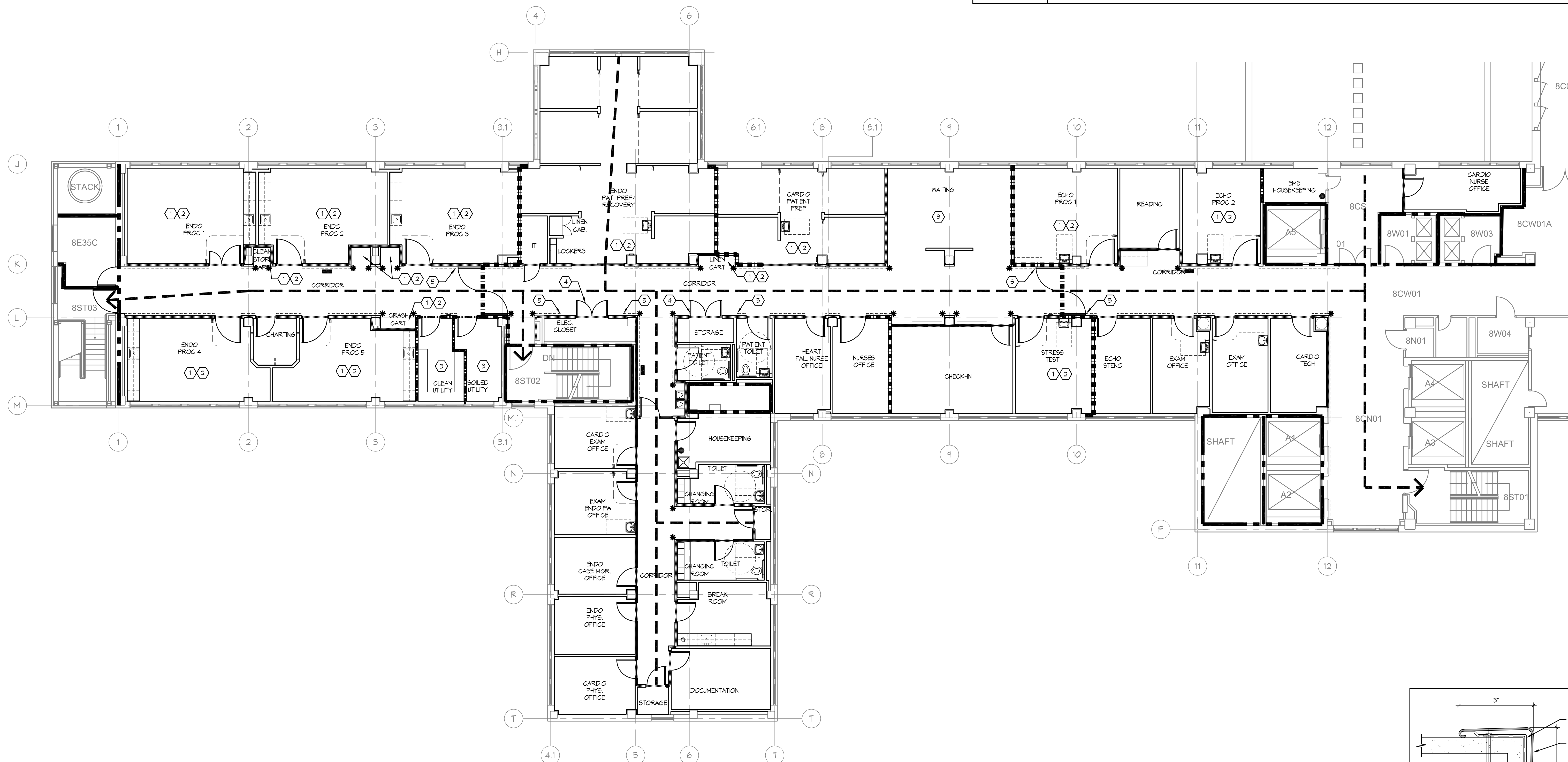
SECTION DETAIL

CHAIR RAIL CHR-1



SECTION

1 1/2" = 1'-0"



1/8" = 1'-0"

Seal



255 COUNTY ROAD 555 SOUTH, BARTOW, FLORIDA 33830
Telephone: (863) 665-6363 Fax: (863) 667-1773

Approved: Project Director



6" = 1'-0"

Location	IOWA CITY, IOWA
----------	-----------------

	Checked
--	---------

Drawn

	Drawing Number
--	----------------

1-A3

Office of
Construction
and Facilities
Management



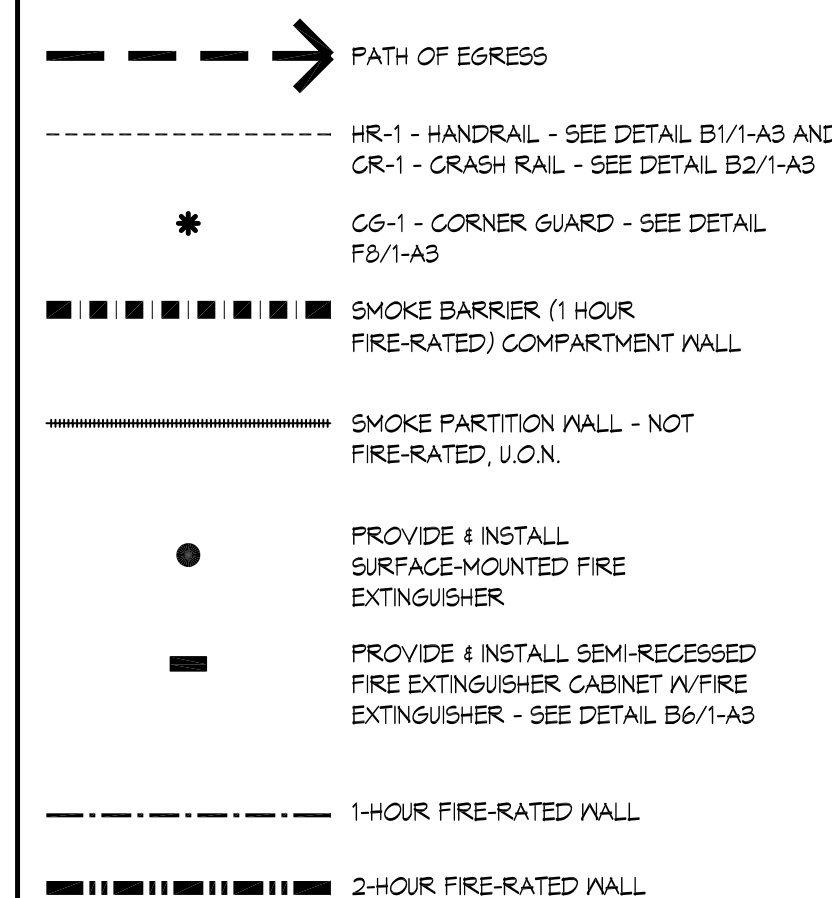
 SHEET NOTES

1. CRASH RAIL CR-1 - SEE DETAIL B2/1-A3
2. CRASH RAIL CR-2 - SEE DETAIL B3/1-A3
3. CHAIR RAIL CHR-1 - SEE DETAIL B4/1-A3
4. DOORS OPEN 180°
5. MAINTAIN 1" MIN. GAP BETWEEN EDGE OF HANDRAIL AND DOOR IN FULLY OPEN POSITION

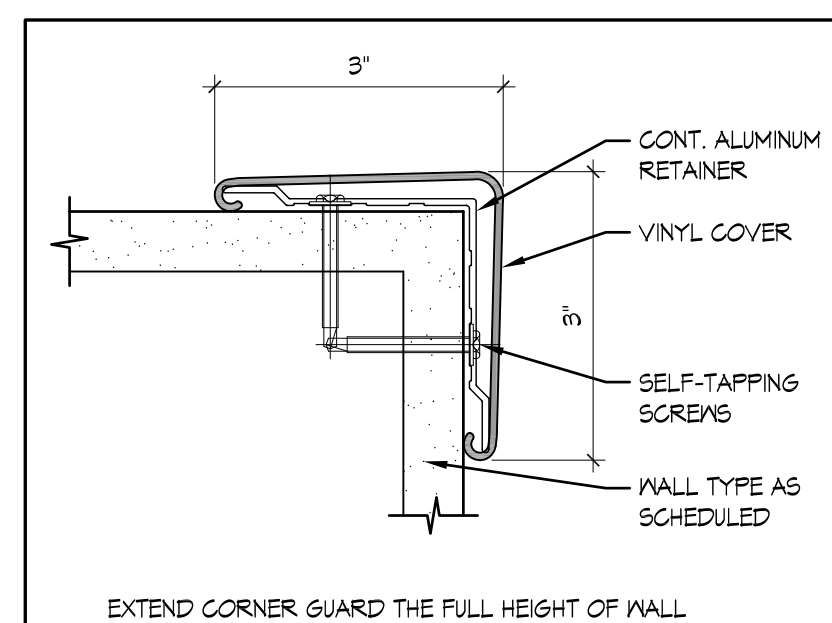
GENERAL NOTES

- A. PROVIDE FIREPROOFING AS REQUIRED TO MEET ALL CODE REQUIREMENTS FOR FIRE RATINGS AS DESCRIBED IN THE PROJECT DATA ON SHEET 1-502.
- B. PROVIDE CONTINUOUSLY WELDED JOINTS ADJACENT TO A DOOR IN A ROOM. THEY SHALL BE LOCATED SO AS NOT TO INTERFERE WITH AOA CLEAR SPACE REQUIREMENTS OR PARTITIONS.
- C. PROVIDE METAL BULKING IN WALL TO REQUIRE SURFACE MOUNTED AND/OR SEMI-RECESSED FIRE EXTINGUISHERS.
- D. MOUNT CHAIR RAIL, CORNER GUARDS AND CRASH RAILS REFER TO SHEET 1-502.
- E. EXISTING MEMBERS OF EGRESS SHALL BE CONTINUOUSLY PROTECTED AND MAINTAINED FROM EXISTING BUILDING TO THE POINT THEY MEET THE NEW CONSTRUCTION. CONSTRUCT TEMPORARY EGRESS PROTECTION AS REQUIRED.
- F. MAINTAIN EXISTING FIRE EXTINGUISHER LOCATIONS DURING CONSTRUCTION.
- G. MAINTAIN RATINGS ON SHAFTS DURING CONSTRUCTION.
- H. PATCH HOLES IN FLOOR DURING CONSTRUCTION TO MAINTAIN FLUSH SURFACE.
- I. ALL EXIT DOORS TO REMAIN UNLOCKED DURING CONSTRUCTION.
- J. REVIEW ALL DRAWINGS FOR POTENTIAL T.E.N. WORK IN OTHER AREAS. COORDINATE PHASING OF THIS AREA WITH V.A. PRIOR TO COMMENCEMENT.
- K. GROUND RAIL AND CHAIR RAIL SPECIFIED IN ROOMS SHALL INCLUDE WALLS WITHIN ROOMS.

LEGEND



KEYPLAN



EXTEND CORNER GUARD THE FULL HEIGHT OF WALL