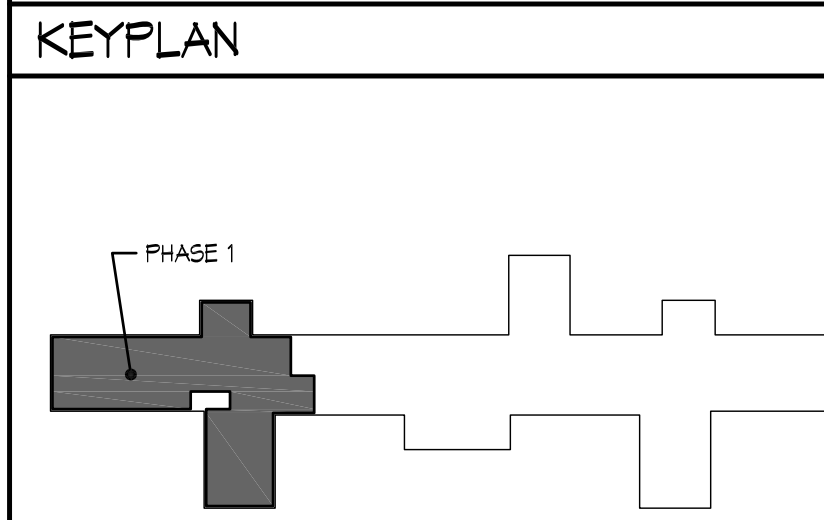
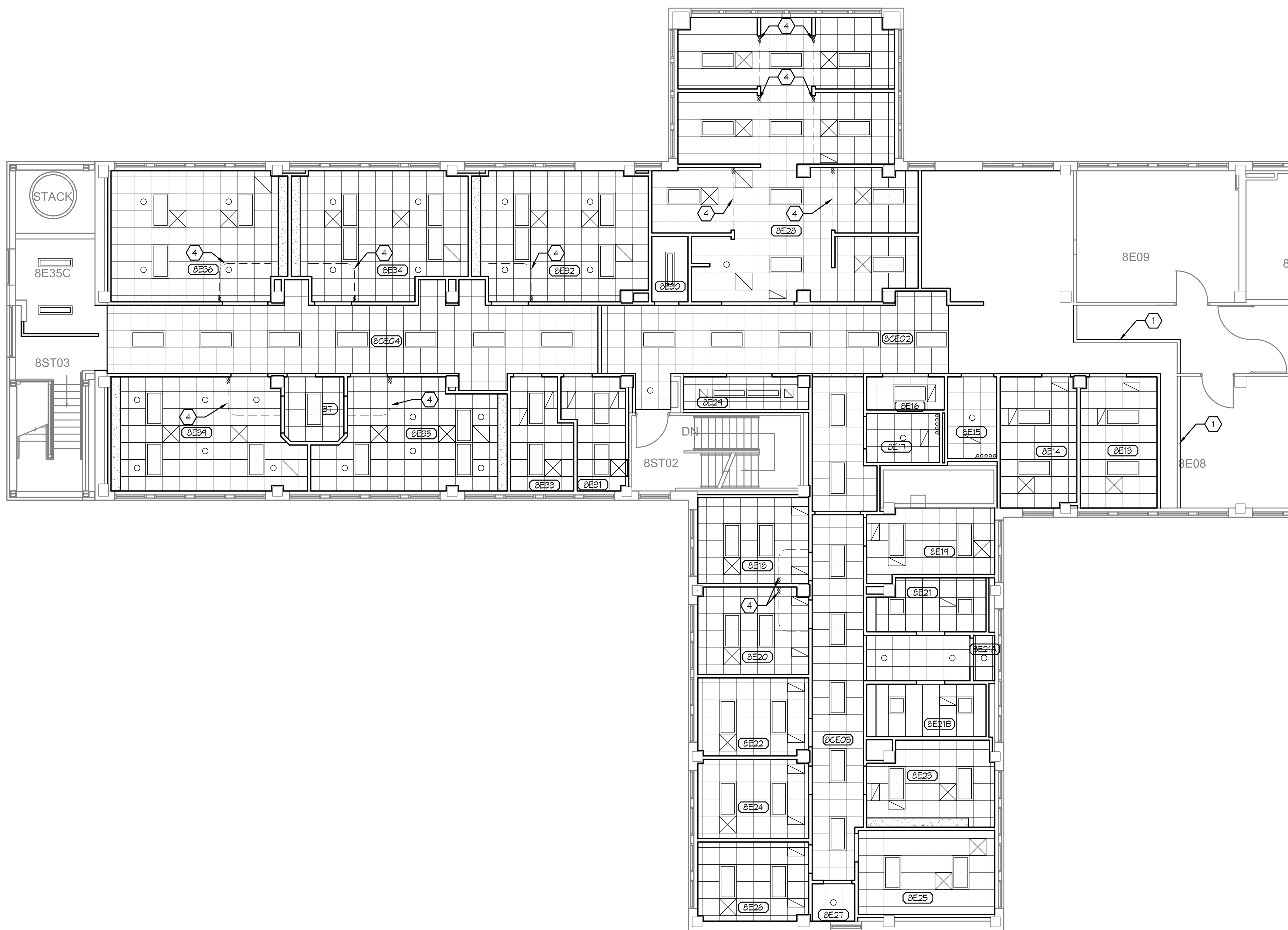


- SHEET NOTES**
- TEMPORARY WALL T1 - SEE 1-A1 FOR WALL TYPES. ALL TEMPORARY DOORS IN TEMPORARY WALLS SHALL BE C-48MIN. LABEL RATED
  - NOT USED
  - NOT USED
  - CUBICAL CURTAIN TRACK - SEE DETAIL F1/1-A6
- GENERAL NOTES**
- ALL SUSPENDED ACOUSTICAL CEILINGS TO BE 8'-0" A.F.F. U.O.N.
  - ALL GNB. CEILING AND GNB. SOFFITS TO BE 1'-10" A.F.F. U.O.N.
  - ALL GNB. SOFFITS ABOVE CASEWORK ARE 1'-2 1/2" DEEP, U.O.N.
  - ALL SPRINKLER HEADS SHALL BE CENTERED IN CEILING TILE.
  - REFER TO SHEETS 1-A8, 1-A9, 1-A10 FOR CEILING HEIGHTS.
  - COORDINATE LOCATION OF ELECTRICAL OUTLETS, SWITCHES, VOICE/DATA OUTLETS, THERMOSTATS & T.V. OUTLETS IN ALL PATIENT ISOLATION ROOMS WITH ARCHITECT IN FIELD.
  - PROVIDE MIN. 1" FILLER AT ALL BASE AND WALL CABINETS AT JUNCTURE WITH WALL.
  - PROVIDE BASE END PANELS AS NECESSARY.
  - ALL COUNTERTOPS USE 90-1 U.O.N.
  - ALL PLASTIC LAMINATE CASEWORK: USE PL-1, U.O.N.

- RCP LEGEND**
- 2X4 LIGHT FIXTURE
  - 2X2 LIGHT FIXTURE
  - 1X4 LIGHT FIXTURE
  - 1X4 LIGHT FIXTURE, SURFACE MOUNTED
  - RECESSED DOWNLIGHT
  - RETURN DUCT
  - SUPPLY DUCT
  - LINEAR DIFFUSERS
  - GYPSUM BOARD CEILING AND SOFFIT GNB. SEE TYPICAL CEILING HEIGHTS LISTED IN GENERAL NOTES
  - 2X2 SUSPENDED ACOUSTICAL CEILING SYSTEM. SEE TYPICAL CEILING HEIGHTS LISTED IN GENERAL NOTES



F1	SECTION DETAIL	F2	SOFFIT DETAIL	F4	PHASE 1 REFLECTED CEILING PLAN
1 1/2" = 1'-0"	CUBICAL CURTAIN TRACK	1/8" = 1'-0"		1/8" = 1'-0"	

Consultant

Seal

**FED/Matrix**  
A Joint Venture

255 COUNTY ROAD 555 SOUTH, BARTOW, FLORIDA 33830  
Telephone: (863) 665-6363 Fax: (863) 667-1773

Drawing Title  
EIGHT EAST PHASE 1 REFLECTED CEILING PLAN & DETAILS

Approved: Project Director

Project Title  
RENOVATE EIGHT EAST FOR ENDOSCOPY & CARDIOLOGY IC VAHCS

Location  
IOWA CITY, IOWA

Date  
07/27/2012

Checked  
JLF

Drawn  
MAP

Project Number  
636A8-12-005

Building Number  
1

Drawing Number  
1-A6

Dwg. 8 of 42

Office of Construction and Facilities Management

Department of Veterans Affairs