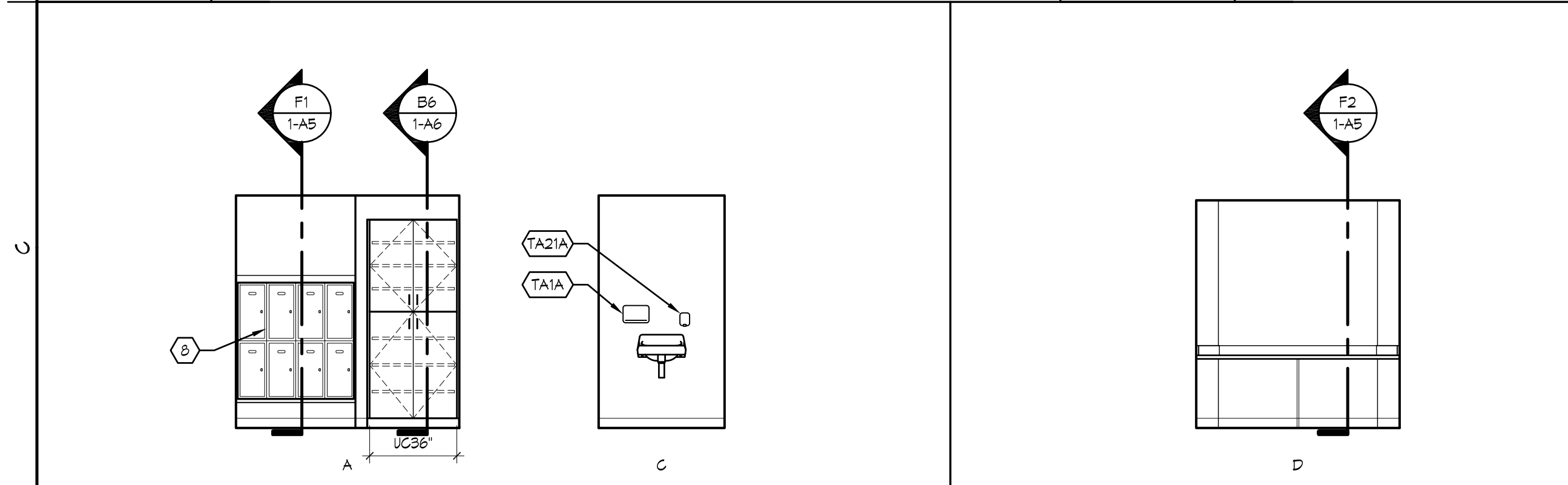
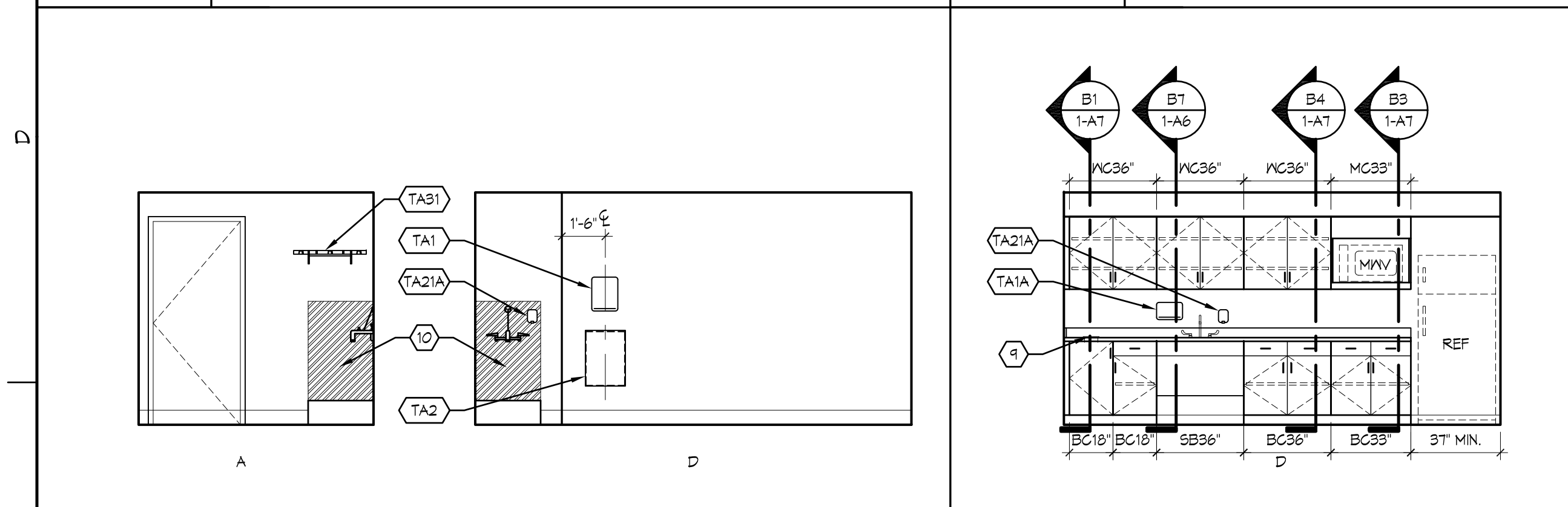


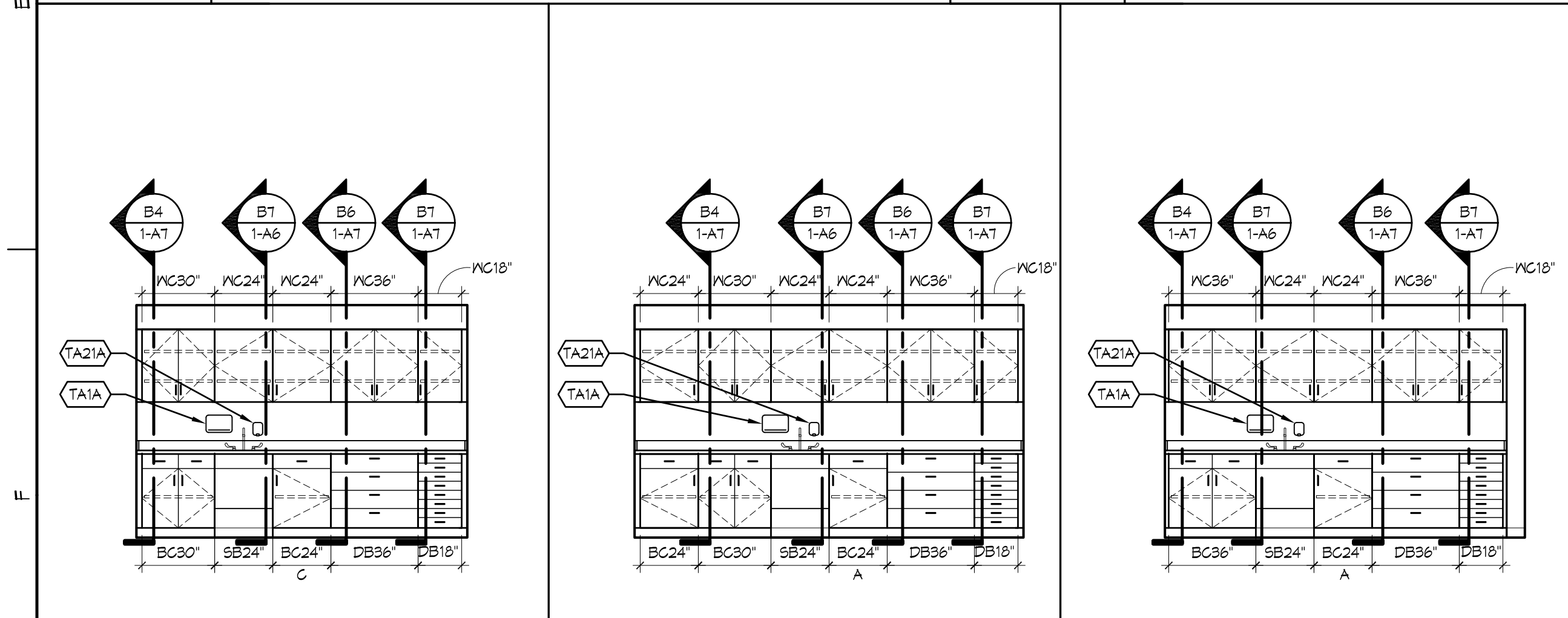
B1	CASEWORK SECTION	B3	CASEWORK SECTION	B4	CASEWORK SECTION	B6	CASEWORK SECTION	B7	CASEWORK SECTION
3/4" = 1'-0"		3/4" = 1'-0"		3/4" = 1'-0"		3/4" = 1'-0"		3/4" = 1'-0"	



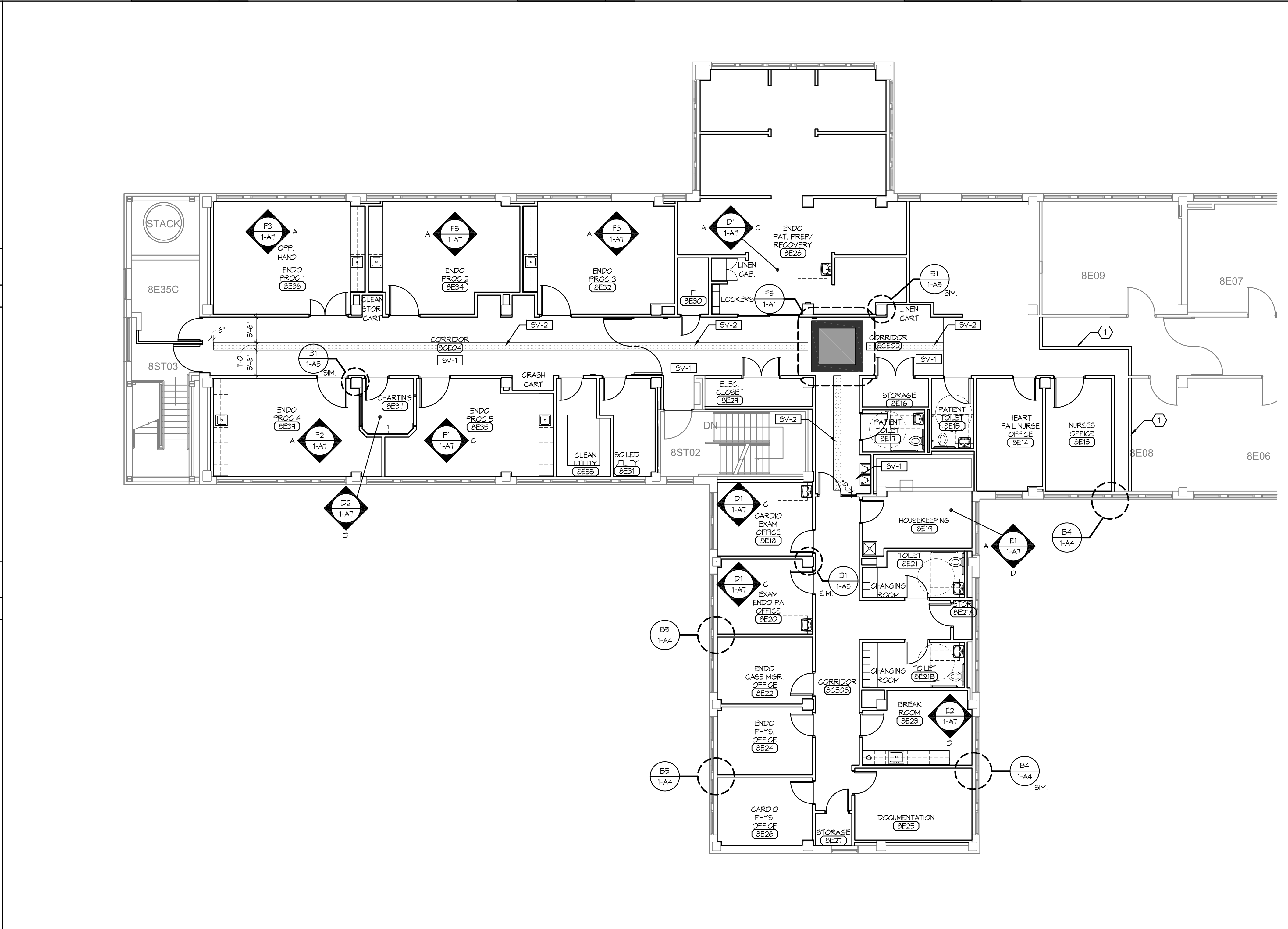
D1	INT. ELEVATION	D2	INT. ELEVATION
1/4" = 1'-0" ENDO PAT. PREP/ RECOVERY 8E28		1/4" = 1'-0" CHARTING 8E37	



E1	INT. ELEVATION	E2	INT. ELEVATION
1/4" = 1'-0" HOUSEKEEPING 8E19		1/4" = 1'-0" BREAK ROOM 8E23	



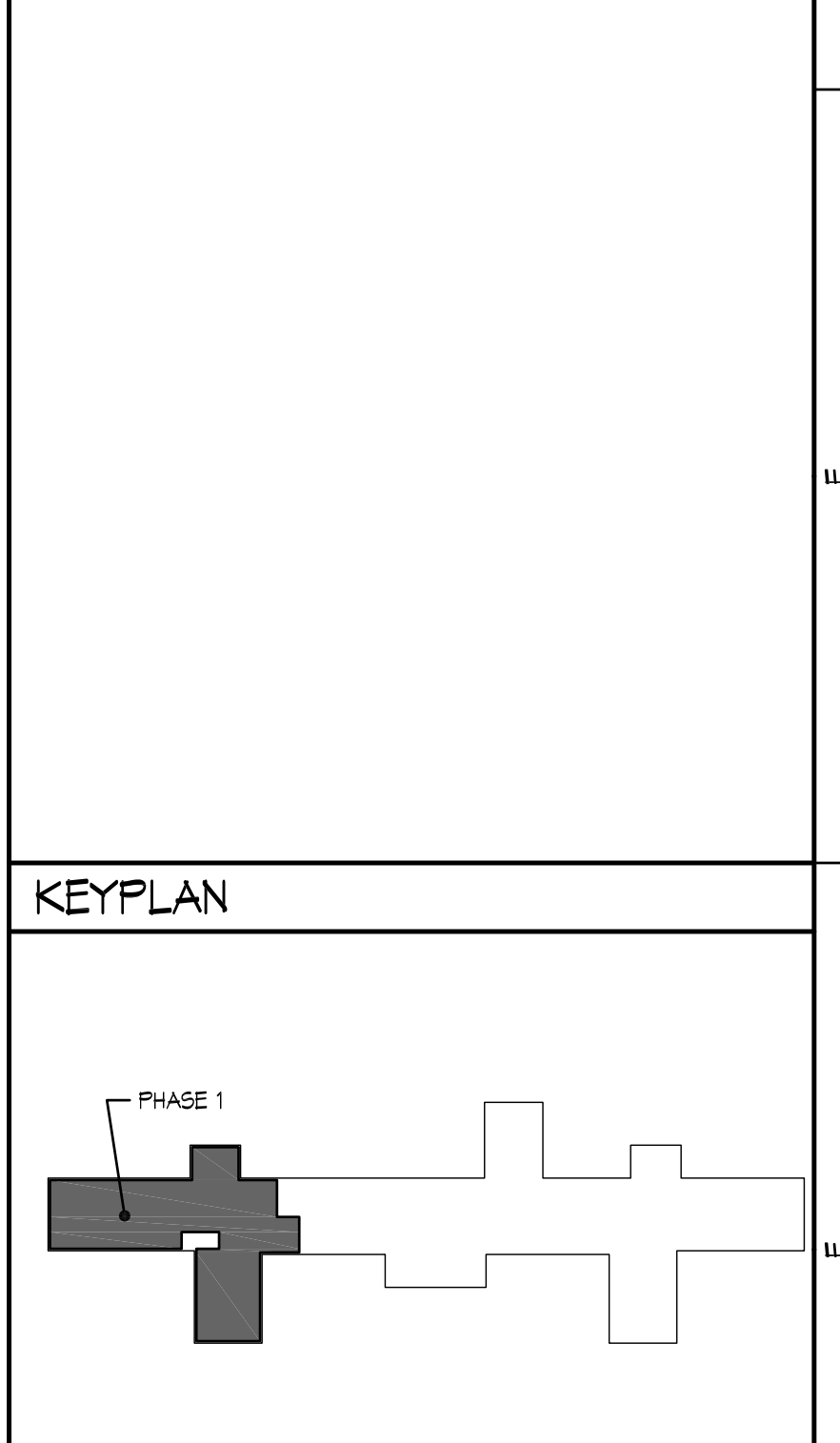
F1	INT. ELEVATION	F2	INT. ELEVATION	F3	INT. ELEVATION
1/4" = 1'-0" ENDO PROC 5 8E95		1/4" = 1'-0" ENDO PROC 4 8E94		1/4" = 1'-0" ENDO PROC 1-3 8E32, 8E34, 8E36	



F4	PHASE 1 FINISH PLAN
1/8" = 1'-0"	

- ### SHEET NOTES
- TEMPORARY WALL T1 - SEE 1-A1 FOR WALL TYPES. ALL TEMPORARY DOORS IN TEMPORARY WALLS SHALL BE C-48MIN. LABEL RATED
  - NOT USED
  - NOT USED
  - NOT USED
  - NOT USED
  - NOT USED
  - NOT USED
  - METAL LOCKERS
  - STAINLESS STEEL CIRCULAR WASTE CHUTE RINGS
  - 22 GA. STAINLESS STEEL SPLASHGUARD WITH HEMMED EDGES, BACK 4 SIDE WALLS - MOUNT PRIOR TO PLUMBING TRIM

- ### GENERAL NOTES
- REFER TO SHEETS 1-A6, 1-A8, 1-A10 FOR CEILING HEIGHTS.
  - REFER TO SHEET 1-A1 WALL TYPES & TOILET ROOM ACCESSORIES.
  - LEGEND FOR WALL TYPES AND TOILET ROOM ACCESSORIES.
  - ALL OUTSIDE CORNERS OF WALL TILE SHALL HAVE A BULLNOSE EDGE U.O.N.
  - WALL TILE ELEVATIONS ARE SHOWN FOR DESIGN INTENT ONLY. CONTRACTOR TO VERIFY ALL FIELD CONDITIONS. START TILE PATTERN AT THE CENTER OF THE WALL U.O.N.
  - SUBJECT TO COMPLIANCE WITH SPECIFICATIONS, CERAMIC AND PORCELAIN TILE TRIM PIECES INCLUDE BUT ARE NOT LIMITED TO THOSE LISTED IN THE FINISH MATERIAL SCHEDULE.
  - COORDINATE LOCATION OF ELECTRICAL OUTLETS, SWITCHES, VOICE/DATA OUTLETS, THERMOSTATS & T.V. OUTLETS IN ALL PATIENT & ISOLATION ROOMS WITH ARCHITECT IN FIELD.
  - PROVIDE MIN. 1" FILLER AT ALL BASE AND WALL CABINETS AT JUNCTURE WITH WALL.
  - PROVIDE BASE END PANELS AS NECESSARY.
  - ALL COUNTERTOPS: USE SS-1, U.O.N.
  - ALL PLASTIC LAMINATE CASEWORK: USE PL-1, U.O.N.
  - ALL FLOORING TO RUN UNDER CABINETS AND EQUIPMENT.



CONSTRUCTION DOCUMENTS

Project Number  
636A8-12-005

Building Number  
1

Drawing Number  
1-A7

Dwg. 9 of 42

Office of  
Construction  
and Facilities  
Management

Department of  
Veterans Affairs

NO. REVISIONS/SUBMISSIONS DATE

Consultant

Seal  
JAMES L. FALKNER  
3148  
IOWA  
REGISTERED ARCHITECT

FED/Matrix  
A Joint Venture  
255 COUNTY ROAD 555 SOUTH, BARTOW, FLORIDA 33830  
Telephone: (863) 665-6363 Fax: (863) 667-1773

Drawing Title  
EIGHT EAST PHASE 1 FINISH PLAN & DETAILS  
Approved: Project Director

Project Title  
RENOVATE EIGHT EAST FOR  
ENDOSCOPY & CARDIOLOGY  
IC VAHCS  
Location  
IOWA CITY, IOWA  
Date  
07/27/2012  
Checked  
JLF  
Drawn  
MAP