

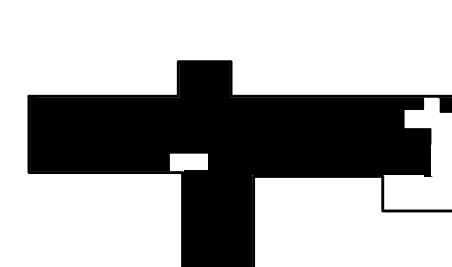
# GENERAL NOTES

1. PROVIDE INSULATED HWS AND HWR PIPING TO ALL TERMINAL BOXES WITH REHEAT COILS. CABINET UNIT HEATERS AND FAN COIL UNITS. MINIMUM SIZE SHALL BE 3/4" OR AS INDICATED ON THE DRAWINGS.
2. PROVIDE SHUT-OFF VALVES TO ALL SUPPLY BRANCH TAKE-OFFS FROM THE MAINS. PROVIDE COMBINATION BALANCE/SHUT-OFF VALVES TO ALL RETURN BRANCHES TO THE MAINS. LOCATE VALVES IN ACCESSIBLE LOCATIONS.
3. PROVIDE TEMPERATURE SENSORS TO ALL AIR TERMINAL BOXES AND ALL FAN COIL UNITS. PREFERRED LOCATIONS ARE SHOWN ON THE PLANS.
4. PROVIDE INSULATED CWS AND CWR PIPING TO ALL FAN COIL UNITS AND AIR HANDLER. MINIMUM SIZE SHALL BE 3/4" OR AS INDICATED ON DRAWINGS.
5. PROVIDE ACCESS TO ALL EQUIPMENT, VALVES, DAMPERS AND SERVICEABLE PARTS INCLUDING FILTERS.
6. CLEAN ALL HEATING HOT WATER, CHILLED WATER, STEAM AND CONDENSATE PIPING THAT IS EXISTING TO REMAIN IN THE RENOVATED AREA, PER PIPE CLEANING SPECIFICATIONS.
7. ALL CONSTRUCTION DEBRIS MUST BE REMOVED BETWEEN THE HOURS OF 4:00 PM AND 7:00 AM THE FOLLOWING MORNING. LOUD ACTIVITIES MUST NOT TAKE PLACE BETWEEN THE HOURS OF 9:00 PM AND 7:00 AM. USE VETERAN'S ADMINISTRATION PROVIDED DUMPSTER FOR DEBRIS DISPOSAL FOR ALL MATERIALS NOT DEEMED HAZARDOUS.
8. REFER TO ARCHITECTURAL DRAWINGS FOR PHASING INFORMATION AND OUT OF SEQUENCE WORK.
9. ALL PIPE LABELS SHALL INCLUDE FLOW ARROWS.

## CODED NOTES

1. PROVIDE ISOLATION VALVES.
2. PROVIDE NEW 1" CONDENSATE DRAIN PIPING FROM HUMIDIFIER TO NEAREST FLOOR DRAIN ON FLOOR BELOW. COORDINATE WORK IN 7TH FLOOR WITH FACILITIES MANAGER. REFER TO GENERAL NOTE #2, SHEET 1-H2.
3. PIPING WORK WITHIN DASHED AREA INCLUDING HEATING HOT WATER, CHILLED WATER AND CONDENSATE PIPING SHALL BE PERFORMED BEFORE ALL OTHER WORK ASSOCIATED WITH THIS PHASE OF CONSTRUCTION. THIS WORK SHALL BE PERFORMED DURING WEEKENDS ONLY. COORDINATE WITH FACILITY MANAGER.
4. ROUTE PIPING DOWN UNDER 34/10 RETURN AIR DUCT WITHIN MECHANICAL ROOM. REFER TO ENLARGED PLAN 'B' ON SHEET 1-H1.
5. PROVIDE HUMIDIFIER IN SUPPLY AIR DUCT ABOVE THE 8TH FLOOR CEILING. REFER TO DETAILS.
6. PROVIDE CONDENSATE PIPING INDIRECT TO MOP SINK.
7. EXTEND NEW HEATING HOT WATER PIPING DOWN TO 7TH FLOOR AND PROVIDE CONNECTION TO EXISTING 3" MAINS.
8. REPAIR EXISTING SHAFT WALL OF ANY DAMAGE NEAR PIPING PENETRATIONS. PROVIDE NECESSARY SAFETY PRECAUTIONS FOR INSTALLATION OF PIPING WITHIN THIS SHAFT. EXISTING PIPING RISERS MUST BE THOROUGHLY FLUSHED.

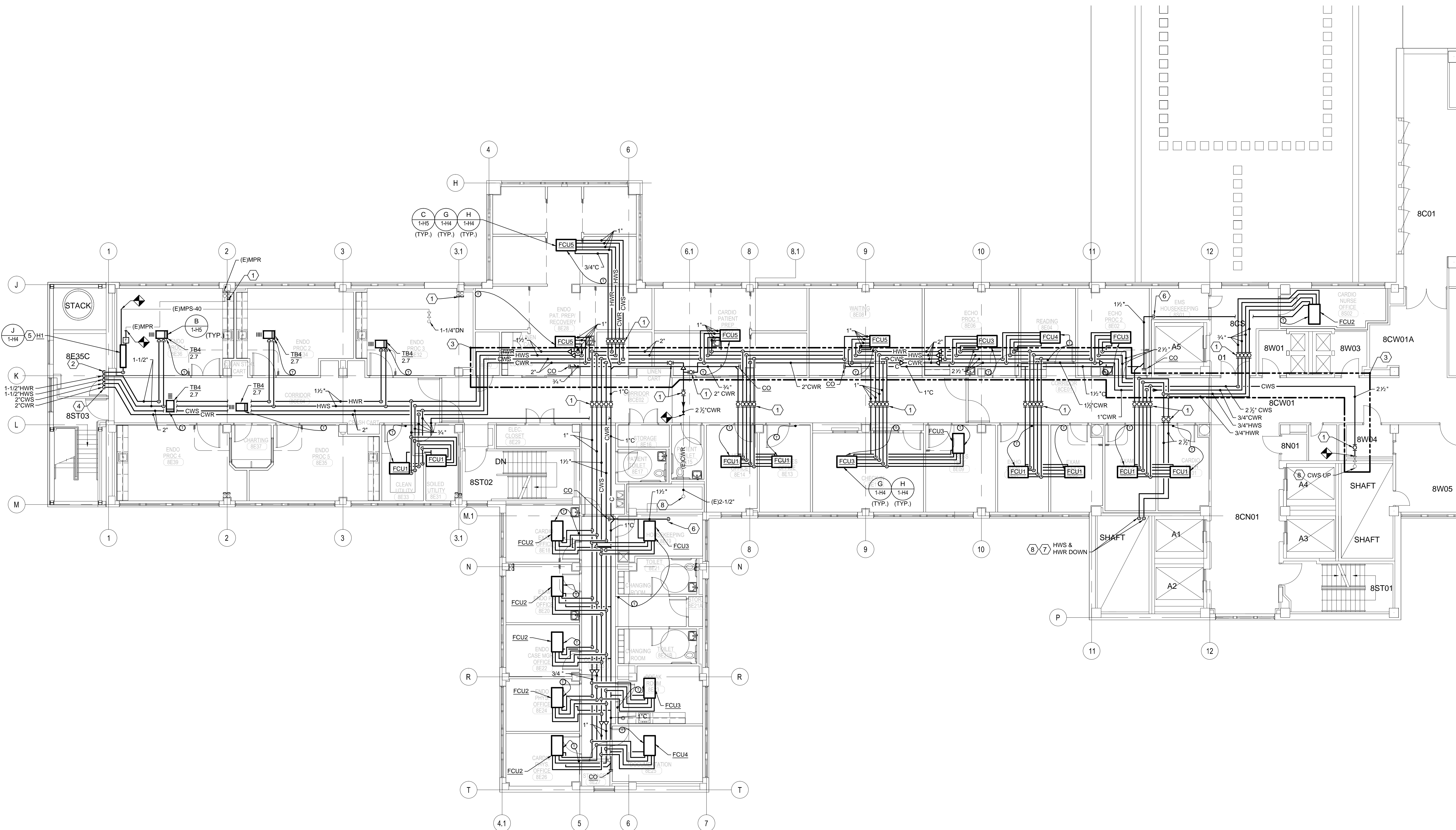
## KEYPLAN



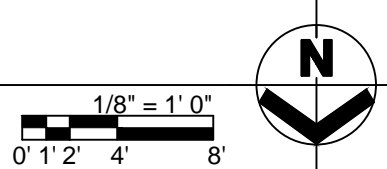
## CONSTRUCTION DOCUMENTS

**KORDA/NEMETH ENGINEERING, INC.**  
1650 WATERMARK DRIVE  
COLUMBUS, OHIO 43215  
DESIGNED BY  
Matt Nichols  
DRAWN BY  
Jesse Whithead  
CHECKED BY  
Mike Haemmerle  
JOB FILE 2011-0312

Office of  
Construction  
and Facilities  
Management



A EIGHT EAST



NO.	REVISIONS/SUBMISSIONS	DATE

Consultant

**KORDA**  
KORDA, NEMETH ENGINEERING  
1650 Watermark Drive, Suite 200 - Columbus, Ohio 43215-7010  
614-487-1650 • FAX 614-487-8981 • WEB www.korda.com

Seal

**FED/Matrix**  
A Joint Venture

255 COUNTY ROAD 555 SOUTH, BARTOW, FLORIDA 33830  
Telephone: (863) 665-6363 Fax: (863) 667-1773

Drawing Title  
EIGHT EAST  
HVAC PIPING  
NEW WORK PLAN

Approved: Project Director  
Project Director

Project Title  
RENOVATE EIGHT EAST FOR  
ENDOSCOPY & CARDIOLOGY  
IC VAHCS

Location  
IOWA CITY, IOWA

Date  
07/27/2012

Checked

Drawn

Project Number  
636A8-12-005

Building Number  
1

Drawing Number  
1-H2

30 of 42