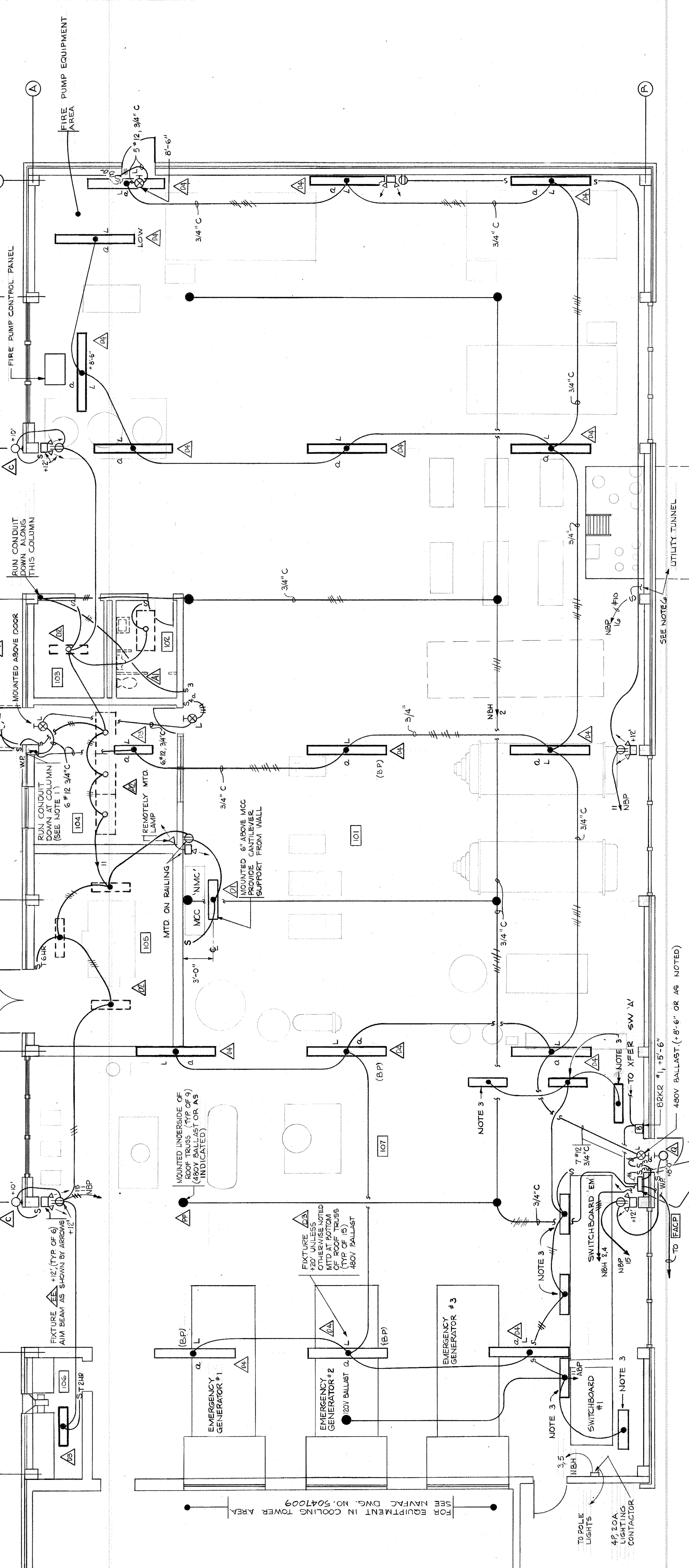
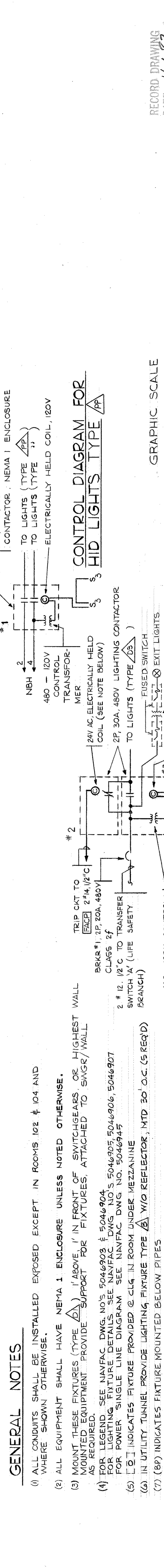


| NO. | DATE    | DESCRIPTION         | APPROVED |
|-----|---------|---------------------|----------|
| 1   | 7/27/77 | REVISED TO AS BUILT | RAT      |
| 2   |         |                     |          |
| 3   |         |                     |          |
| 4   |         |                     |          |
| 5   |         |                     |          |
| 6   |         |                     |          |
| 7   |         |                     |          |
| 8   |         |                     |          |
| 9   |         |                     |          |
| 10  |         |                     |          |



**LIGHTING - BOILER/GENERATOR BLDG.**  
SCALE = 1/4" = 1'-0"



**GENERAL NOTES**

- ALL CONDUITS SHALL BE INSTALLED EXPOSED EXCEPT IN ROOMS 102 & 104 AND WHERE SHOWN OTHERWISE.
- ALL EQUIPMENT SHALL HAVE NEMA 1 ENCLOSURE UNLESS NOTED OTHERWISE.
- MOUNT THESE FIXTURES (TYPE  $\Delta$ ) 1' ABOVE 1" IN FRONT OF SWITCHGEARS OR HIGHEST WALL AS REQUIRED. MOUNTED EQUIPMENT PROVIDE SUPPORT FOR FIXTURES, ATTACHED TO SWAGE/WALL.
- FOR LEGEND, SEE NAVFAC DWG. NO. 5046903 & 5046904. FOR LIGHTING FIXTURE DETAILS, SEE NAVFAC DWG. NO. 5046905, 5046906, 5046907 FOR POWER SINGLE LINE DIAGRAM. SEE NAVFAC DWG. NO. 5046945.
- $\Delta$  INDICATES FIXTURE PROVIDED @ CLG. IN ROOM UNDER MEZZANINE.
- IN UTILITY TUNNEL PROVIDE LIGHTING, FIXTURE TYPE  $\Delta$  W/O REFLECTOR, MTD 30' O.C. (S REQ'D).
- (BP) INDICATES FIXTURE MOUNTED BELOW PIPES.

**CONTROL DIAGRAM FOR CEILING FLUORESCENT LIGHTS TYPE  $\Delta$**   
RM. 101 & 107 ONLY

**CONTROL DIAGRAM FOR HID LIGHTS TYPE  $\Delta$**

**GRAPHIC SCALE**  
1/4" = 1'-0"  
0 1 2 3 4 5 6 7 8 9 10 11

**REVISIONS**

PREP'D BY DATE APPROVED  
RAT 7/27/77 MARTEN

RECORD DRAWING DATE 1/1/82

DEPARTMENT OF THE NAVY NAVAL FACILITIES ENGINEERING COMMAND  
SOUTHERN DIVISION  
CHARLESTON, S.C.

NAVAL REGIONAL MEDICAL CENTER ORLANDO, FLORIDA

**HOSPITAL REPLACEMENT**  
BOILER/GENERATOR BUILDING  
LIGHTING

OFFICER IN CHARGE DATE  
F 80091 DATE 2/2/77

CONSTR. CONTR. NO. N62467-75-C-0340  
SCALE 1/4" = 1'-0" NAVFAC DRAWING NO. 5047006

ED. COLLETT/NAVY/NAVY/NAVY