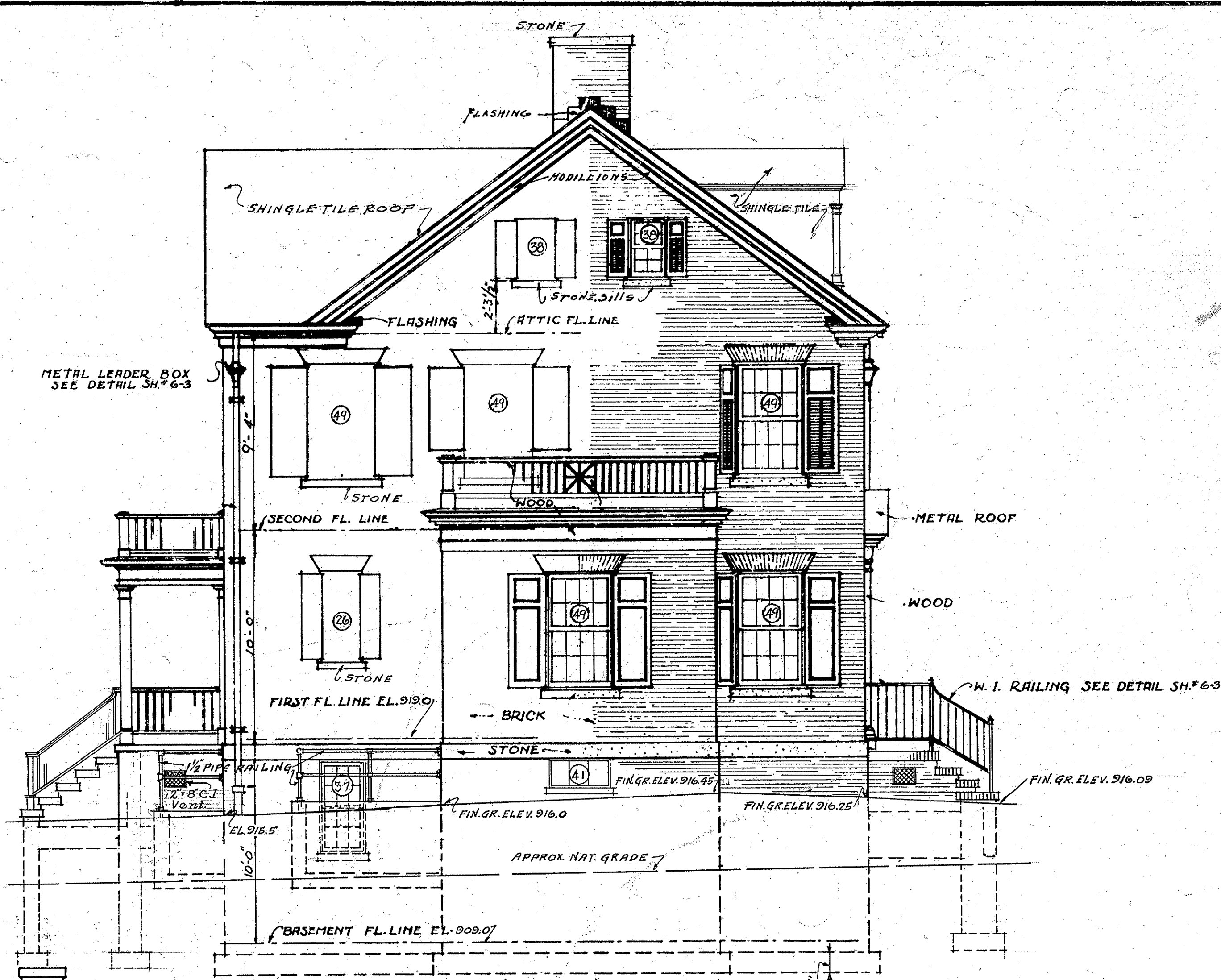


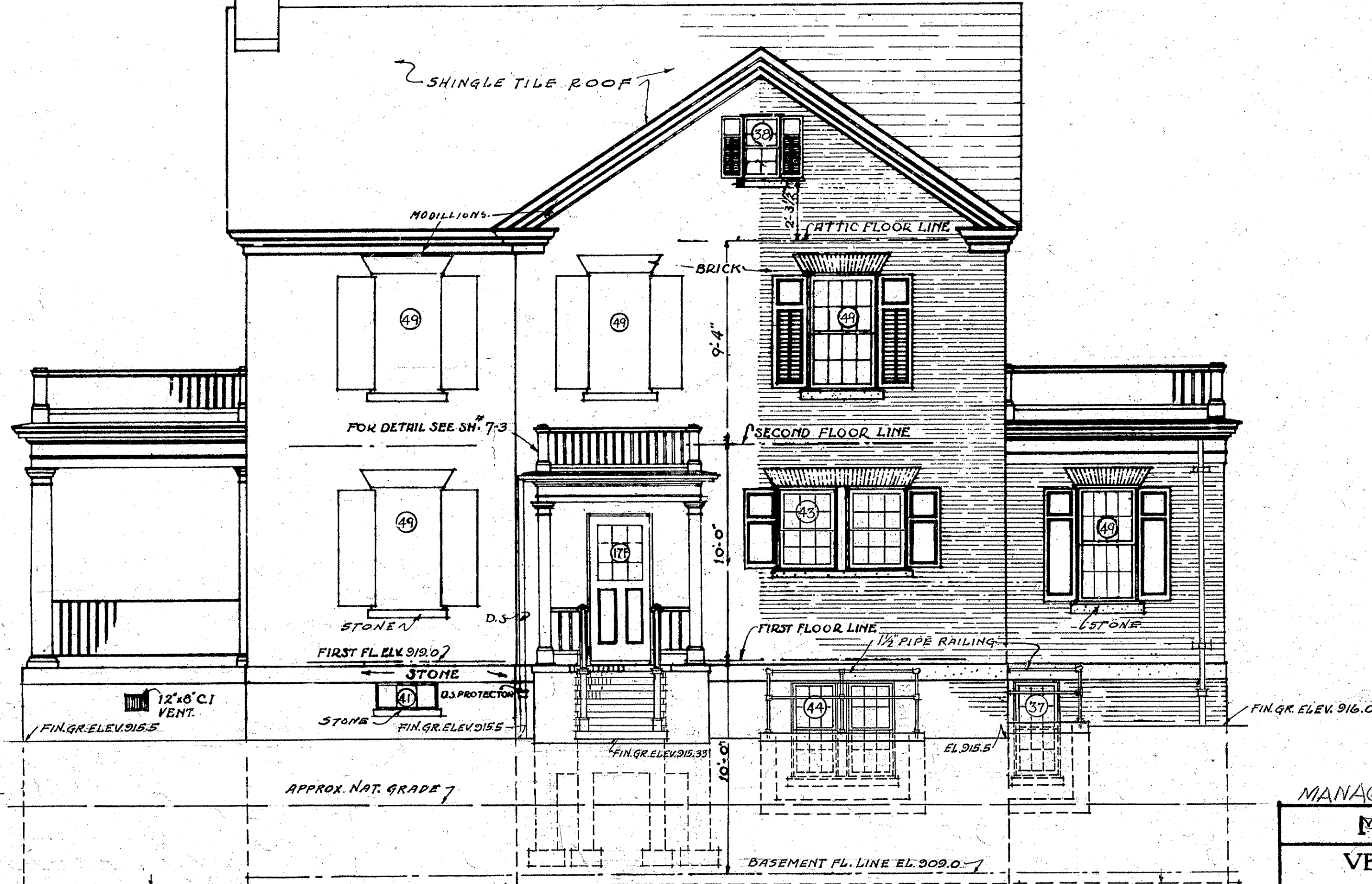
SIDE (WEST) ELEVATION
SCALE 1/4" = 1'-0"



FRONT (NORTH) ELEVATION
SCALE 1/4" = 1'-0"



SIDE (EAST) ELEVATION
SCALE 1/4" = 1'-0"



REAR (SOUTH) ELEVATION
SCALE 1/4" = 1'-0"

VETERANS ADMINISTRATION
WASHINGTON, D. C.

APPROVED *Frank D. Mines*
ADMINISTRATOR

George B. Zang
ASSISTANT ADMINISTRATOR

W. S. Salas
DIRECTOR OF CONSTRUCTION

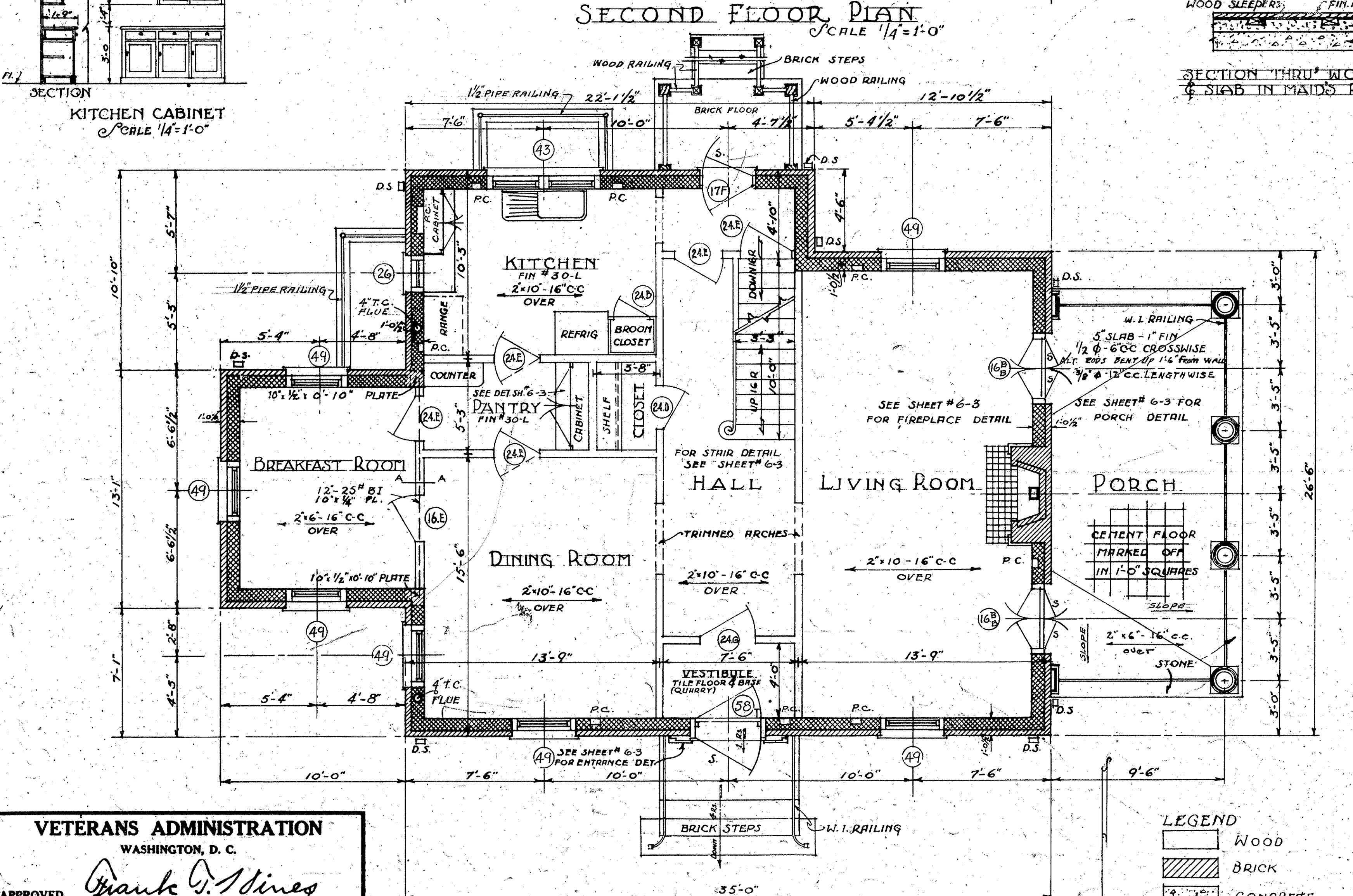
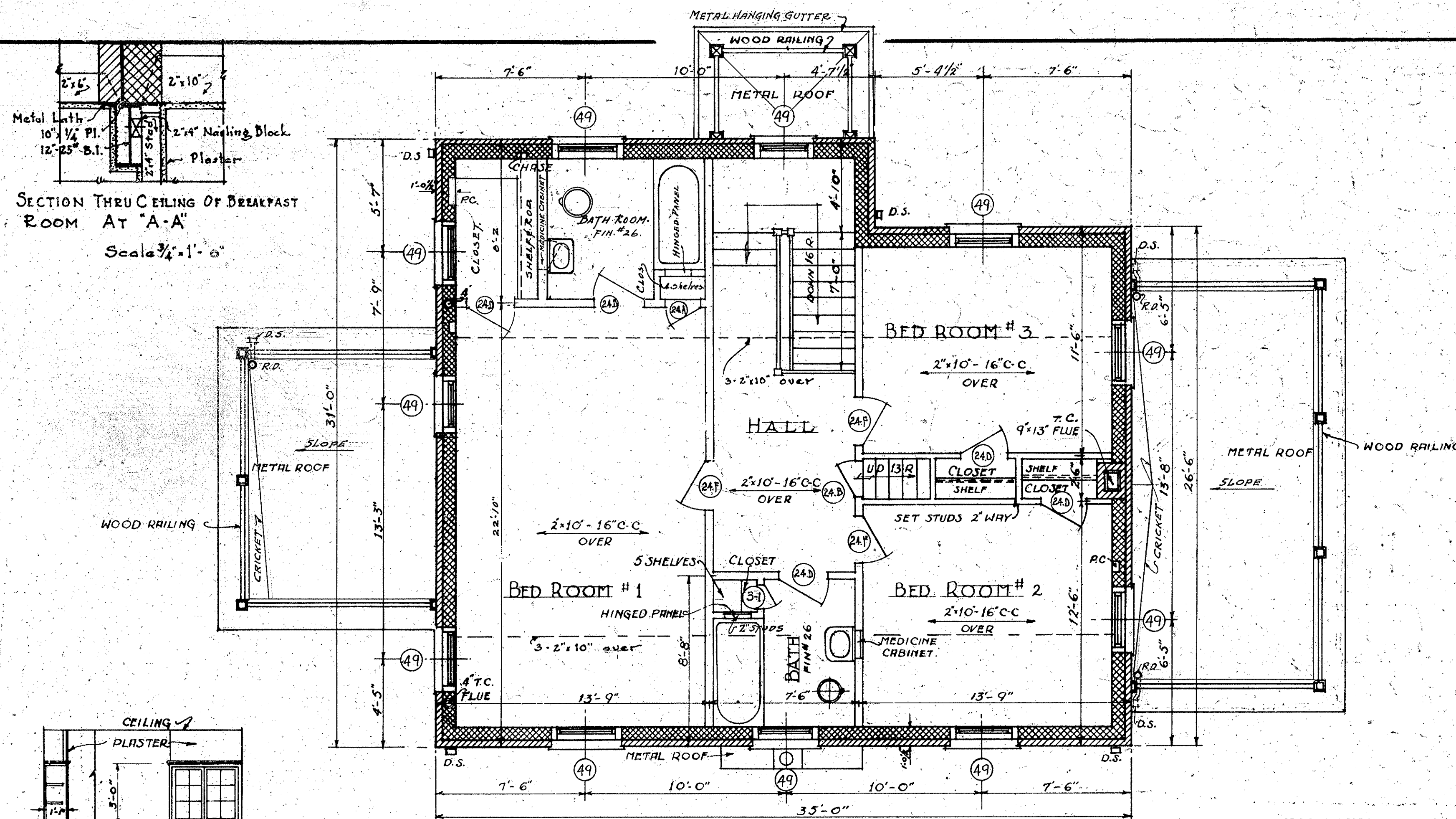
W. S. Salas
CHIEF, TECHNICAL DIVISION

MANAGERS' QTRS.
M-O-C RESIDENCE NO. 6
VETERANS ADMIN. HOSPITAL
DES MOINES, IOWA.

REVISIONS		6-2 SHEET 2 OF 6
DRAWN	HOLY	
TRACED	HOLY	
CHECKED	HOLY	
DATE April 22, 1932		
Sub-Division Chief		

RETURN TRACINGS TO PLAN FILES

FILE FOLDER NO. 3



VETERANS ADMINISTRATION
WASHINGTON, D. C.

APPROVED: *Frank G. Hines*
ADMINISTRATOR

George B. Gaines
ASSISTANT ADMINISTRATOR

W. H. Smith
DIRECTOR OF CONSTRUCTION

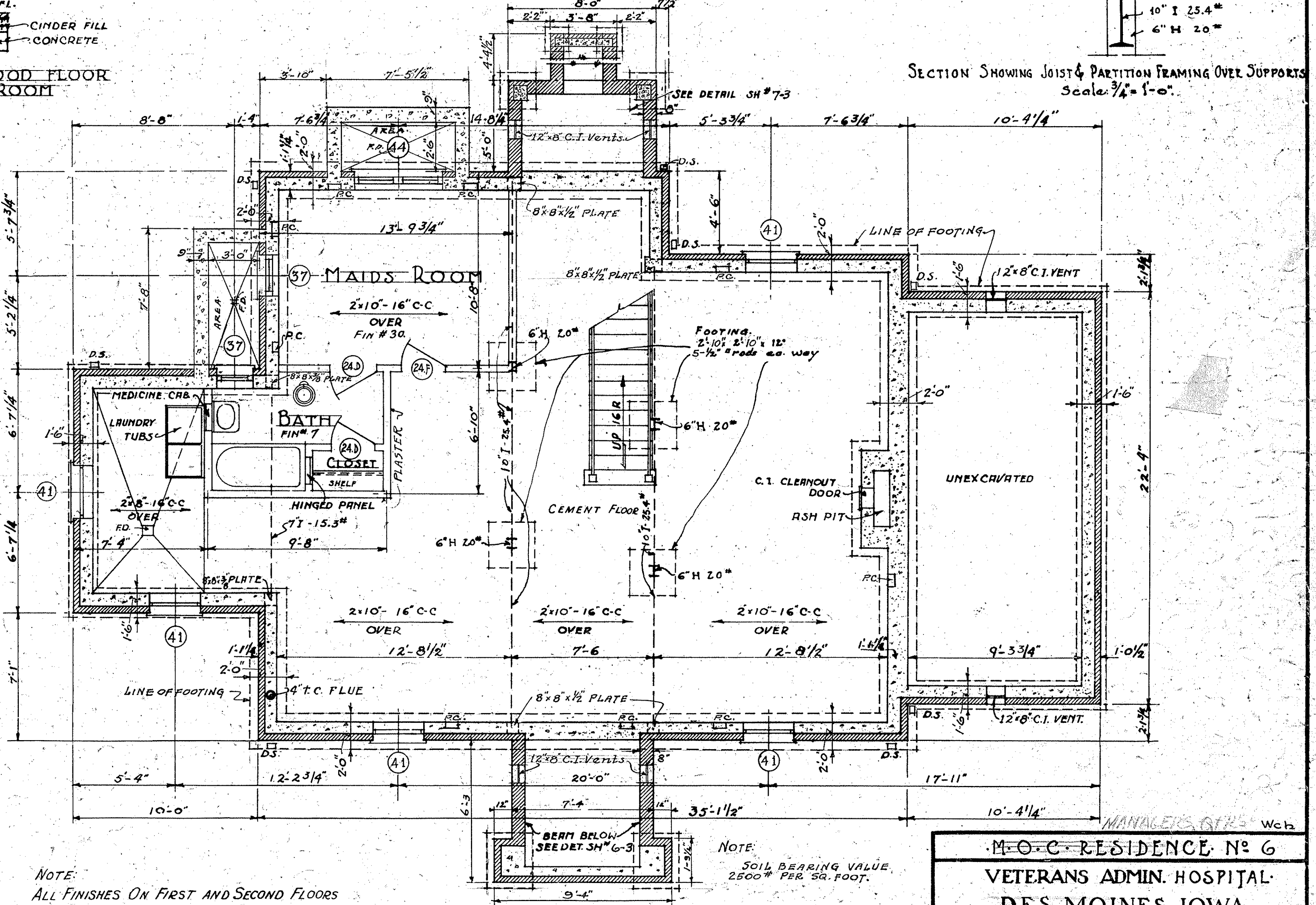
W. H. Smith
CHIEF, TECHNICAL DIVISION

LEGEND

- WOOD
- BRICK
- CONCRETE
- BUDG. TILE

D.S. = DOWN SPOUT
S. = SCREEN DOOR
P.F. = PIPE FURRING
F.D. = FLOOR DRAIN
P.C. = PIPE CHASE
R.D. = ROOF DRAIN

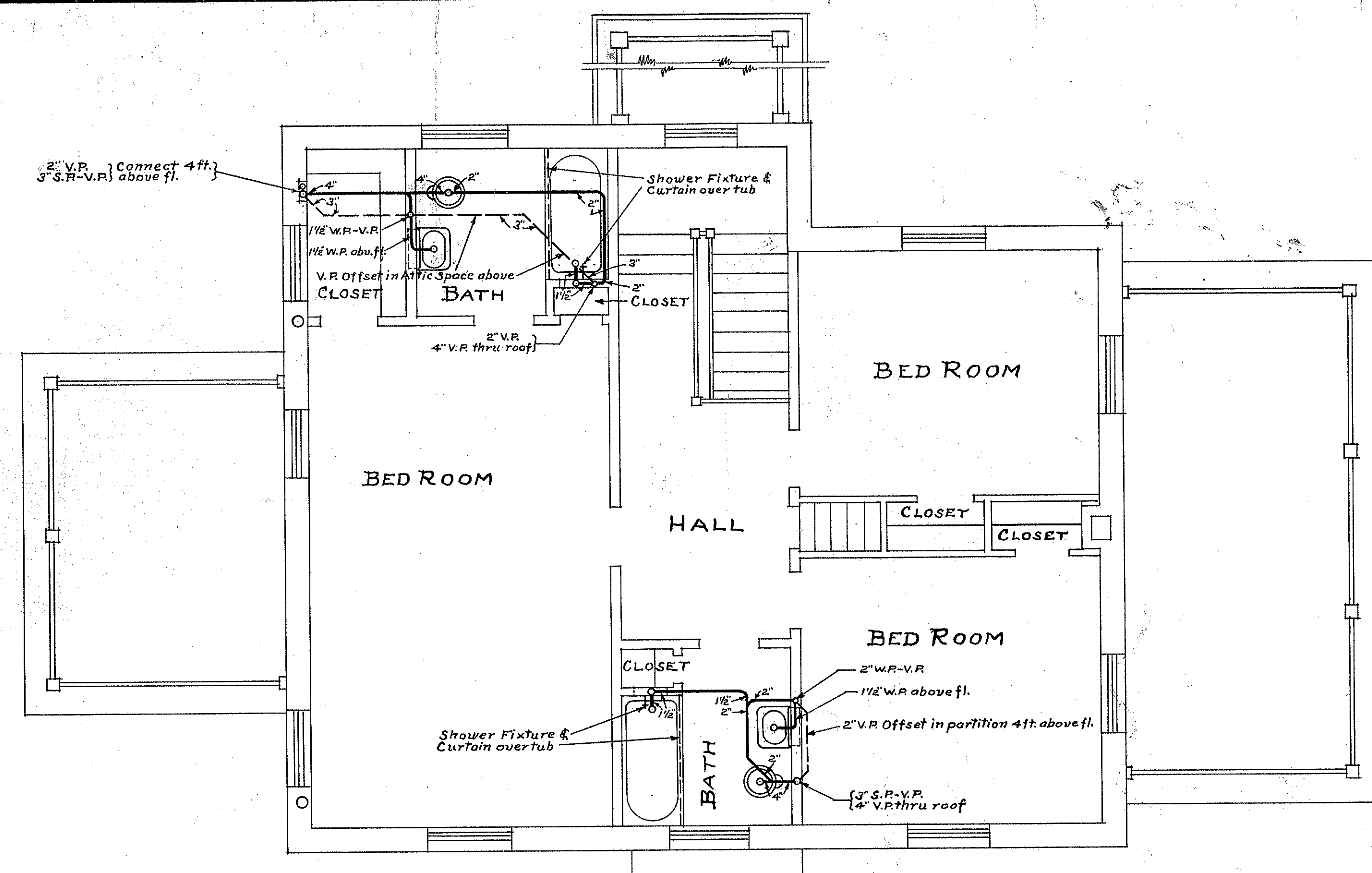
NOTE:
ALL FINISHES ON FIRST AND SECOND FLOORS TO BE NO. 30 UNLESS OTHERWISE NOTED.
ALL DOOR FRAMES TO BE OF WOOD.
PROVIDE BRICK UNDER ALL STEEL BEAMS.
SUPPORTED BY TILE WALLS 12" WIDE AND 8" DEPTH. SEE NOTES ON STRUCTURAL DRAWINGS.



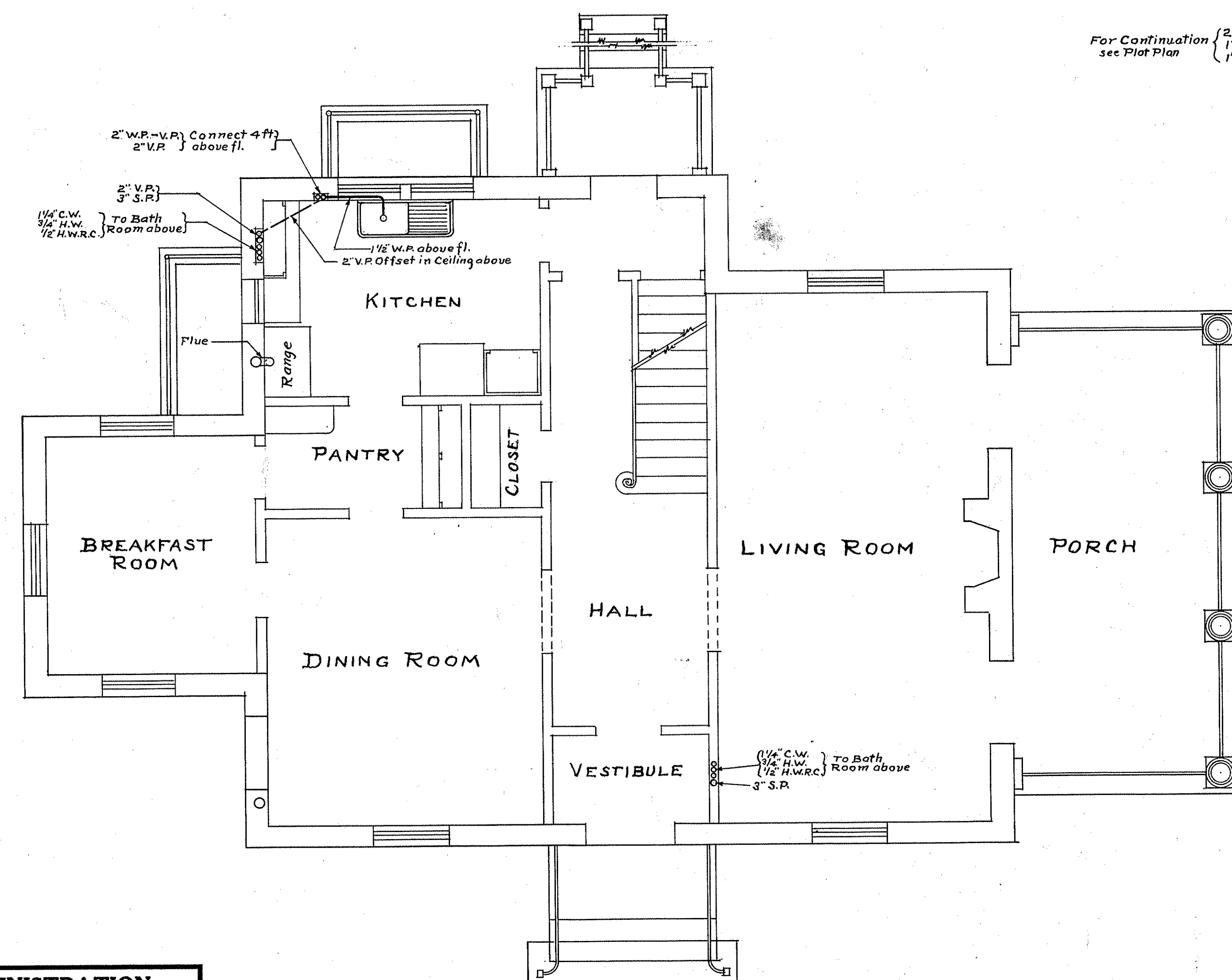
NOTE:
PROVIDE OPENING IN BASEMENT WALL FOR SERVICE PIPES. SEE M.E. DRAWINGS FOR SIZE AND LOCATION.

M.O.C. RESIDENCE NO. 6		
VETERANS ADMIN. HOSPITAL DES MOINES, IOWA.		
Drawn By: <i>Chapman</i>	REVISIONS	NUMBER
Traced By: <i>97M</i>		6-1
Sect. Chf. <i>97M</i>		SHEET 1 OF 6
Date April 22, 1932		
Sub-Division Chief <i>W. H. Smith</i>		

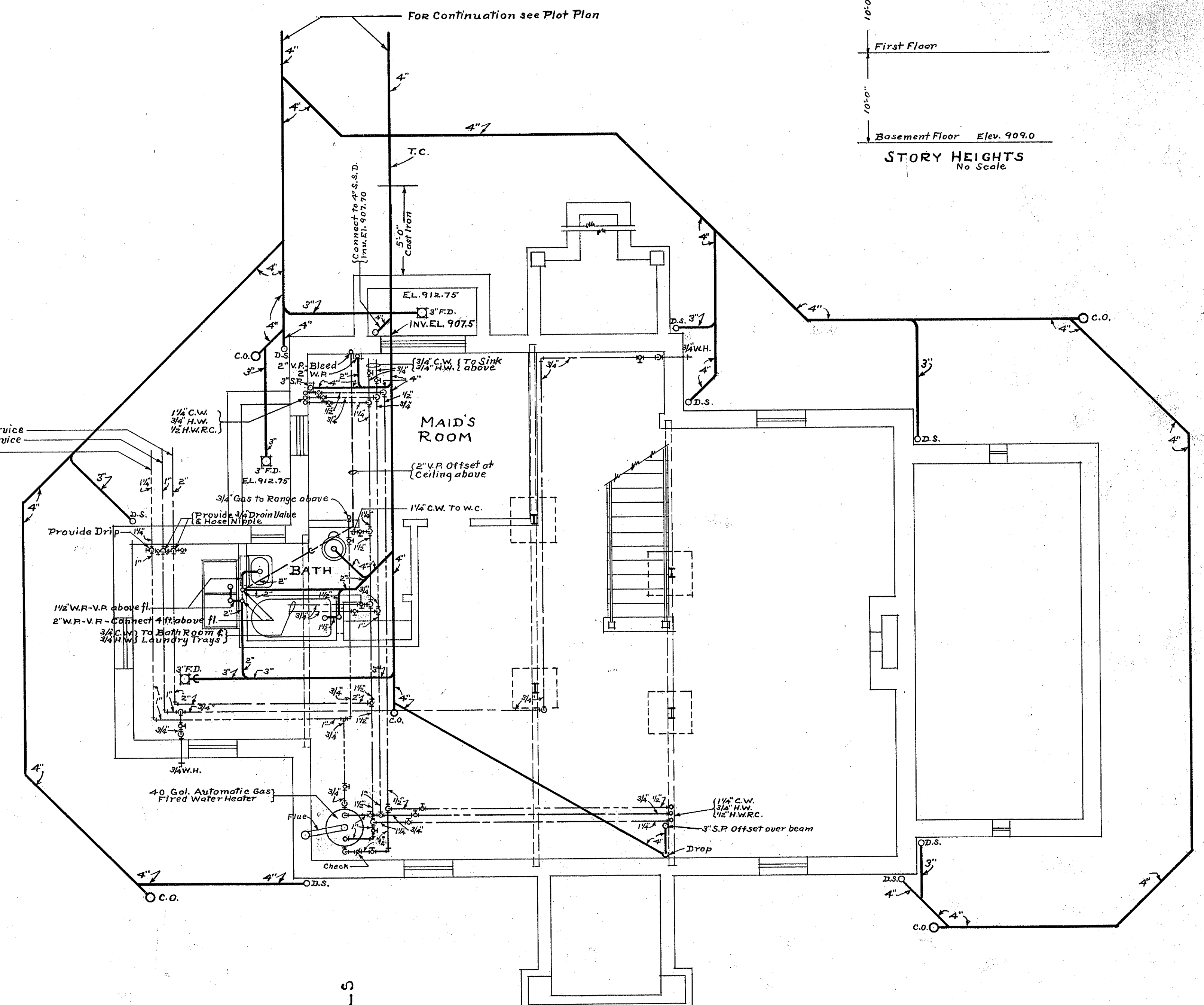
FILE FOLDER NO. 2



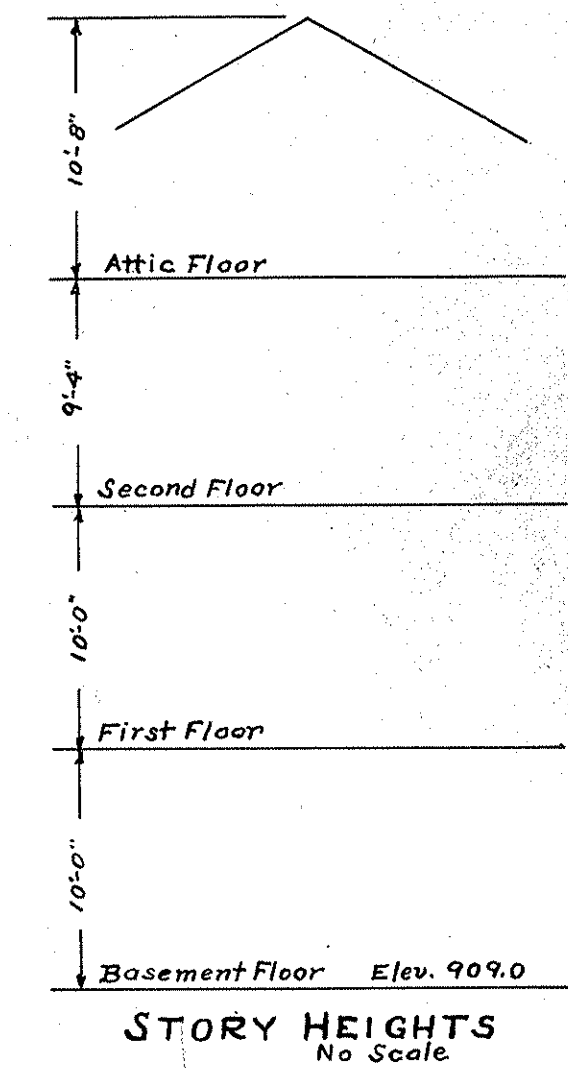
SECOND FLOOR PLAN
Scale 1/4" = 1'-0"



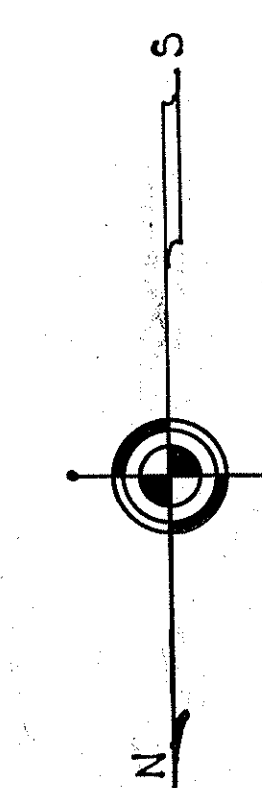
FIRST FLOOR PLAN
Scale 1/4" = 1'-0"



BASEMENT PLAN
FL. ELEV. 909.0 Scale 1/4" = 1'-0"



For Continuation see Plot Plan
2" Soft Water Service
1" Hard Water Service
1/4" Gas Service



VETERANS ADMINISTRATION
WASHINGTON, D. C.

APPROVED: *Frank D. Mines*
ADMINISTRATOR
George E. Jones
ASSISTANT ADMINISTRATOR
J. H. White
DIRECTOR OF CONSTRUCTION
W. J. Talbot
CHIEF, TECHNICAL DIVISION

MANAGER'S QTRS

PLUMBING

M.O.C. RESIDENCE NO. 6
VETERANS ADMINISTRATION HOSPITAL
DES MOINES, IOWA.

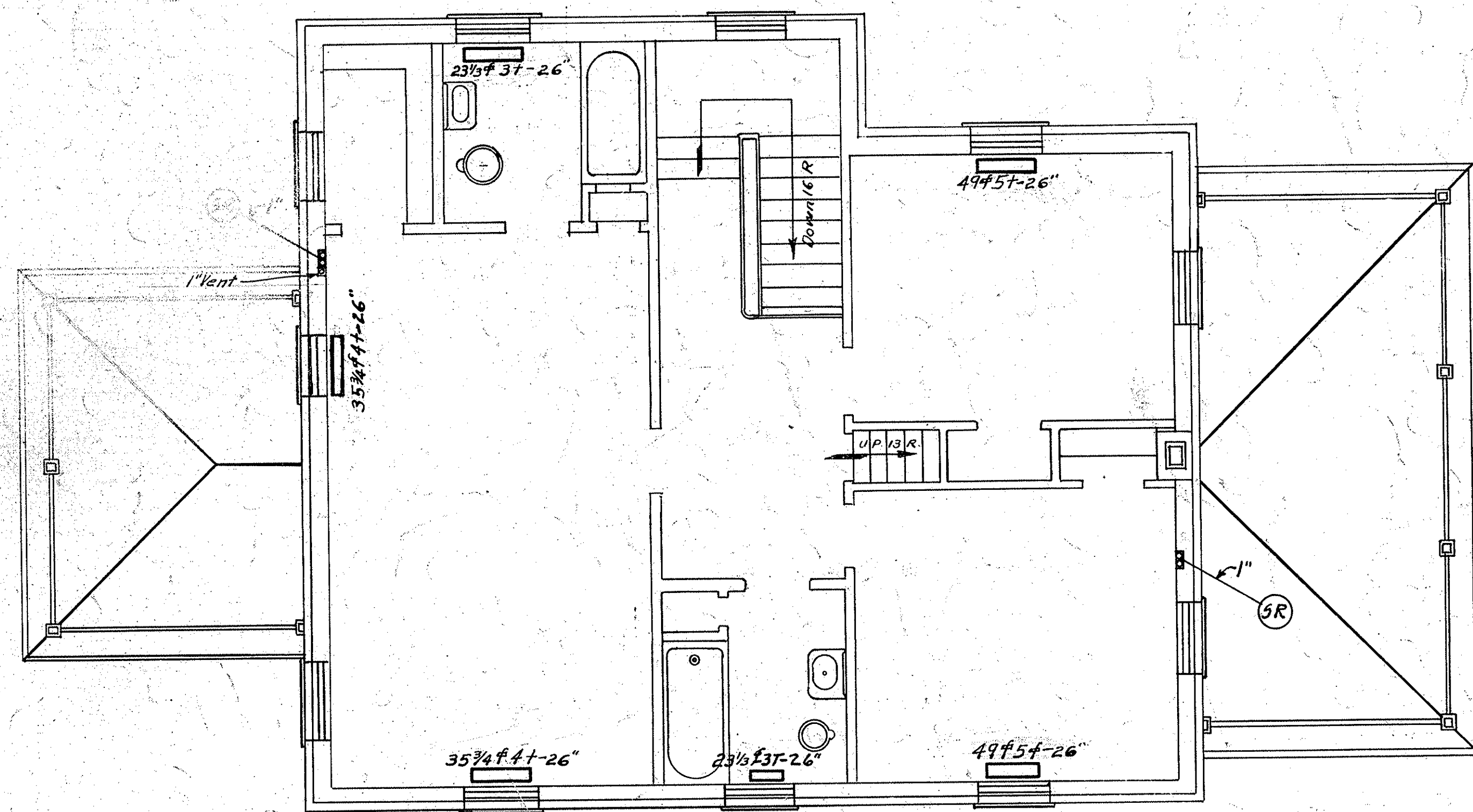
Drawn	REVISIONS	NUMBER
DUNKLE		
Traced		
Sect. Chf.		
Date April 22, 1932		
Sub-Division Chief		

6-4

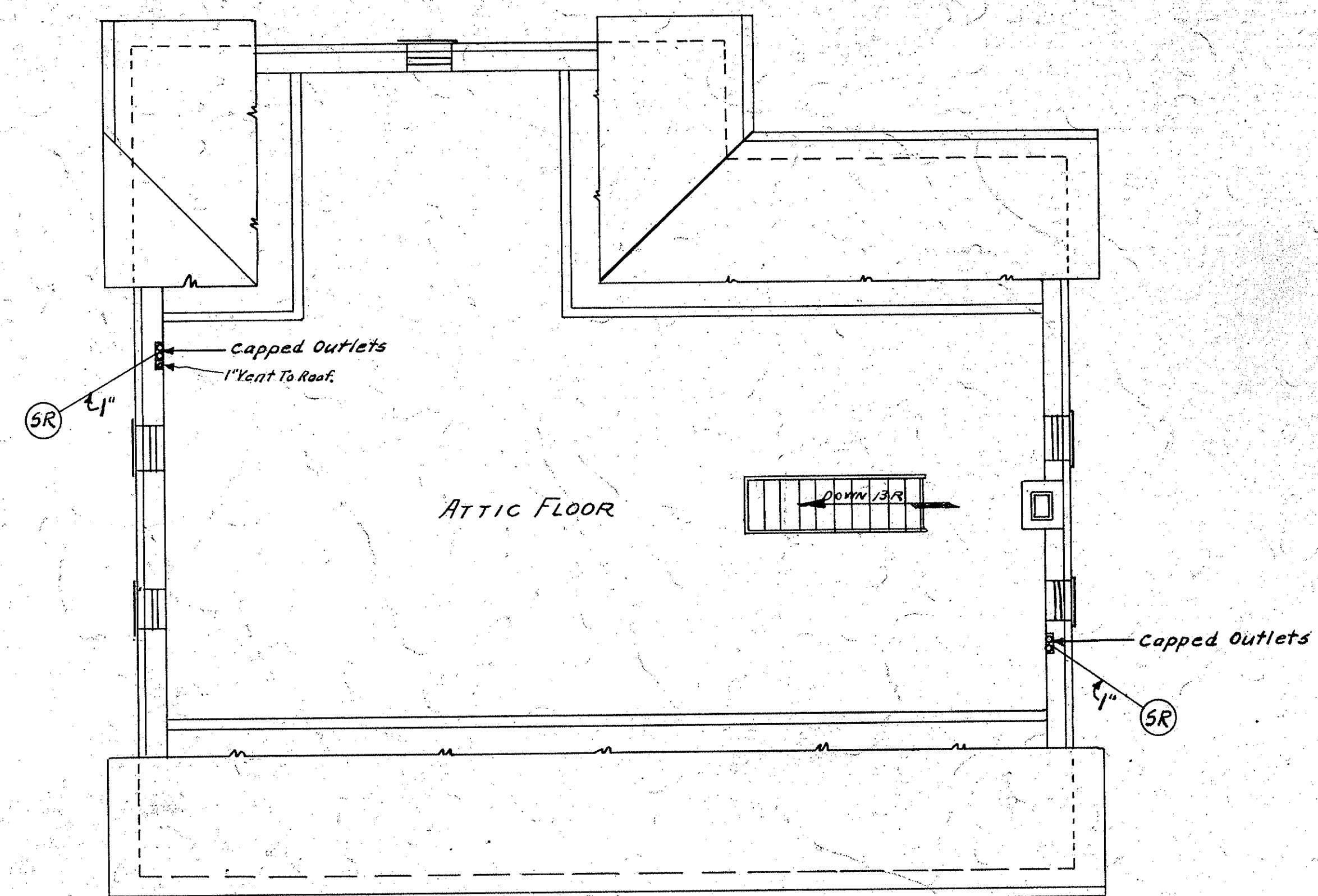
SHEET 4 OF 6

RETURN TRACINGS TO PLAN FILES

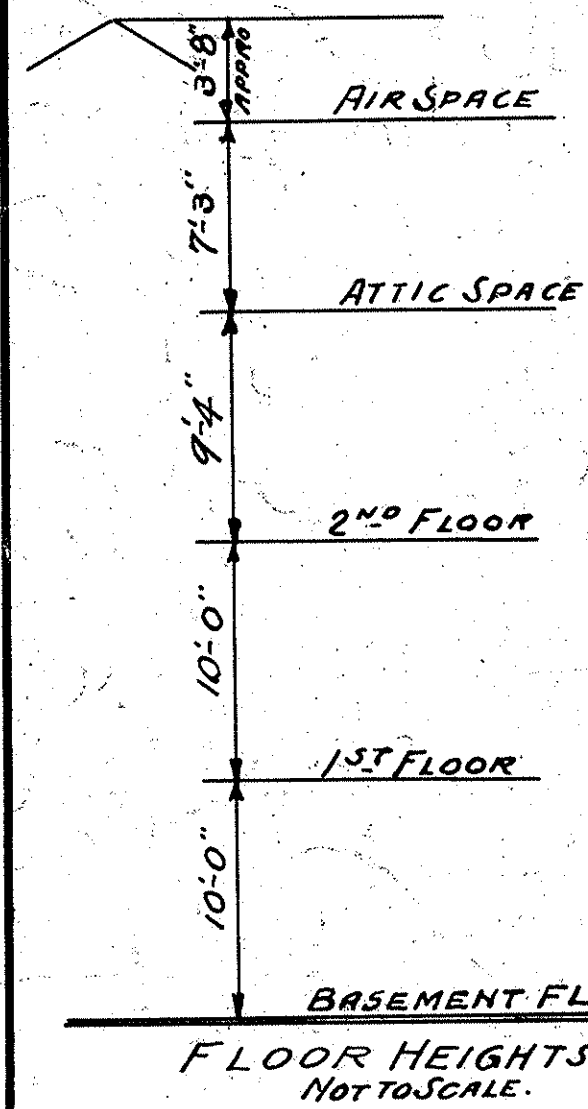
FILE FOLDER NO. 3



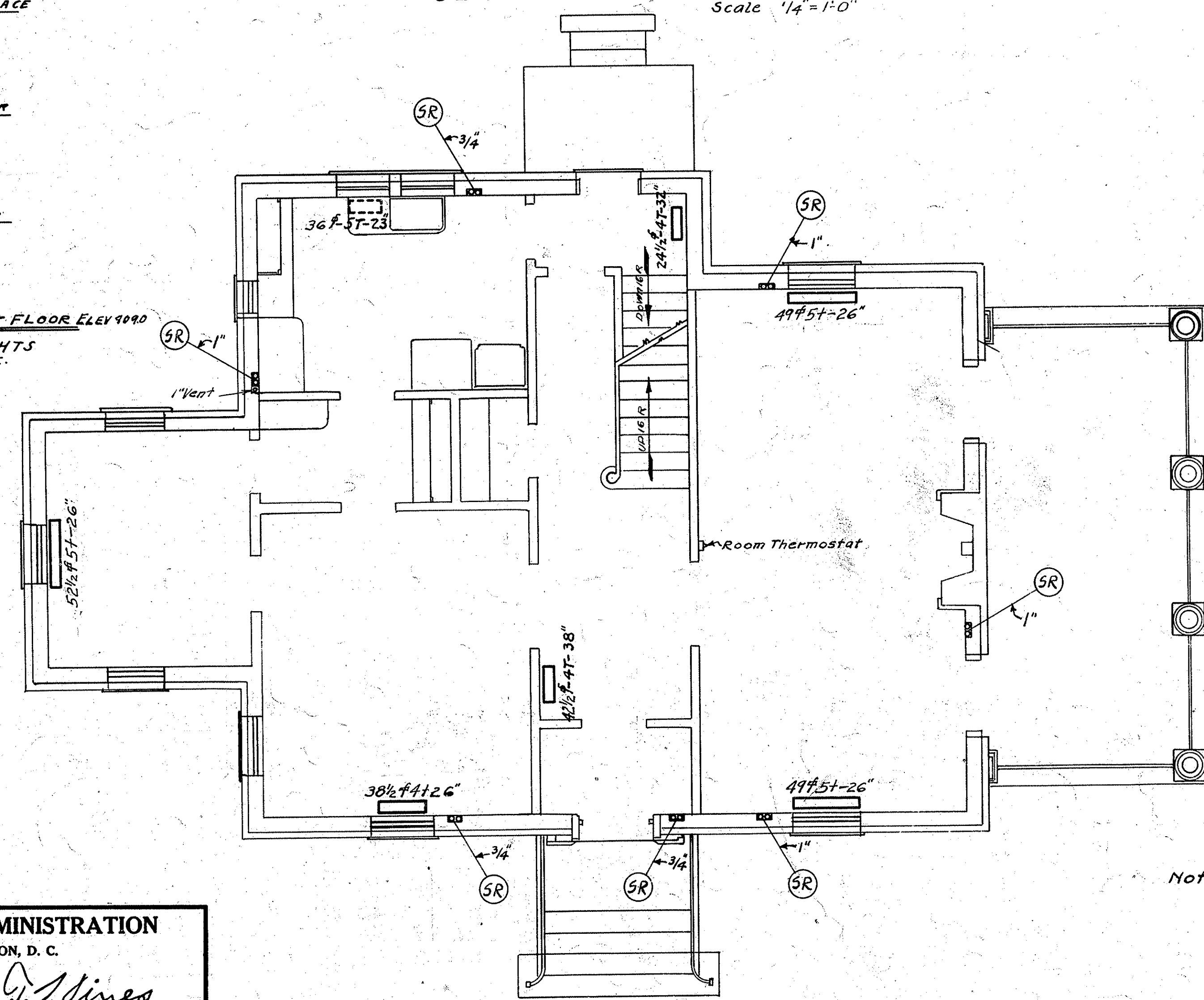
SECOND FLOOR PLAN
Scale 1/4" = 1'-0"



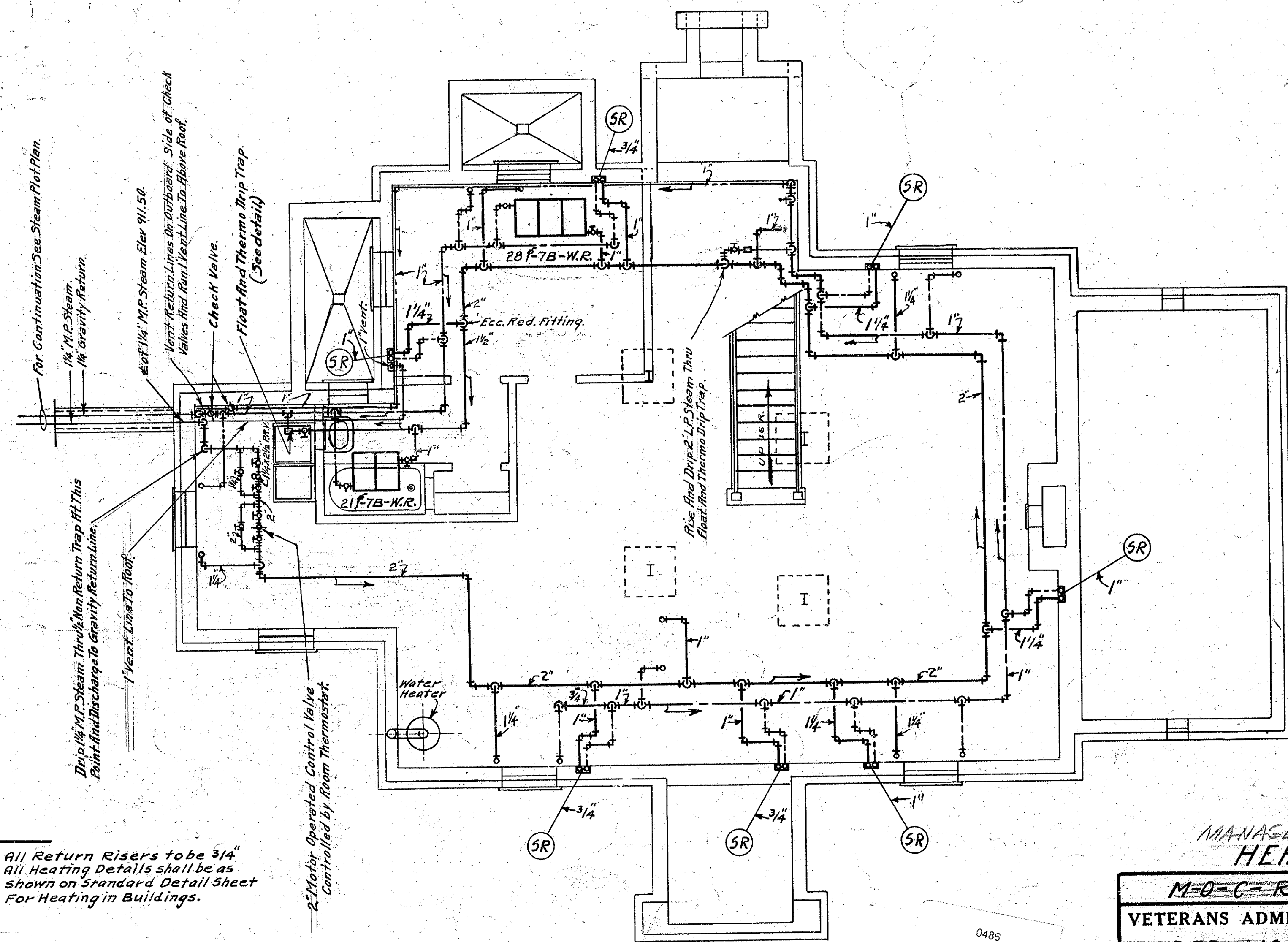
ATTIC FLOOR
Scale 1/4" = 1'-0"



FLOOR HEIGHTS
NOT TO SCALE.



FIRST FLOOR PLAN
Scale 1/4" = 1'-0"



BASEMENT FLOOR PLAN
Scale 1/4" = 1'-0"

Note:
All Return Risers to be 3/4"
All Heating Details shall be as
shown on Standard Detail Sheet
For Heating in Buildings.

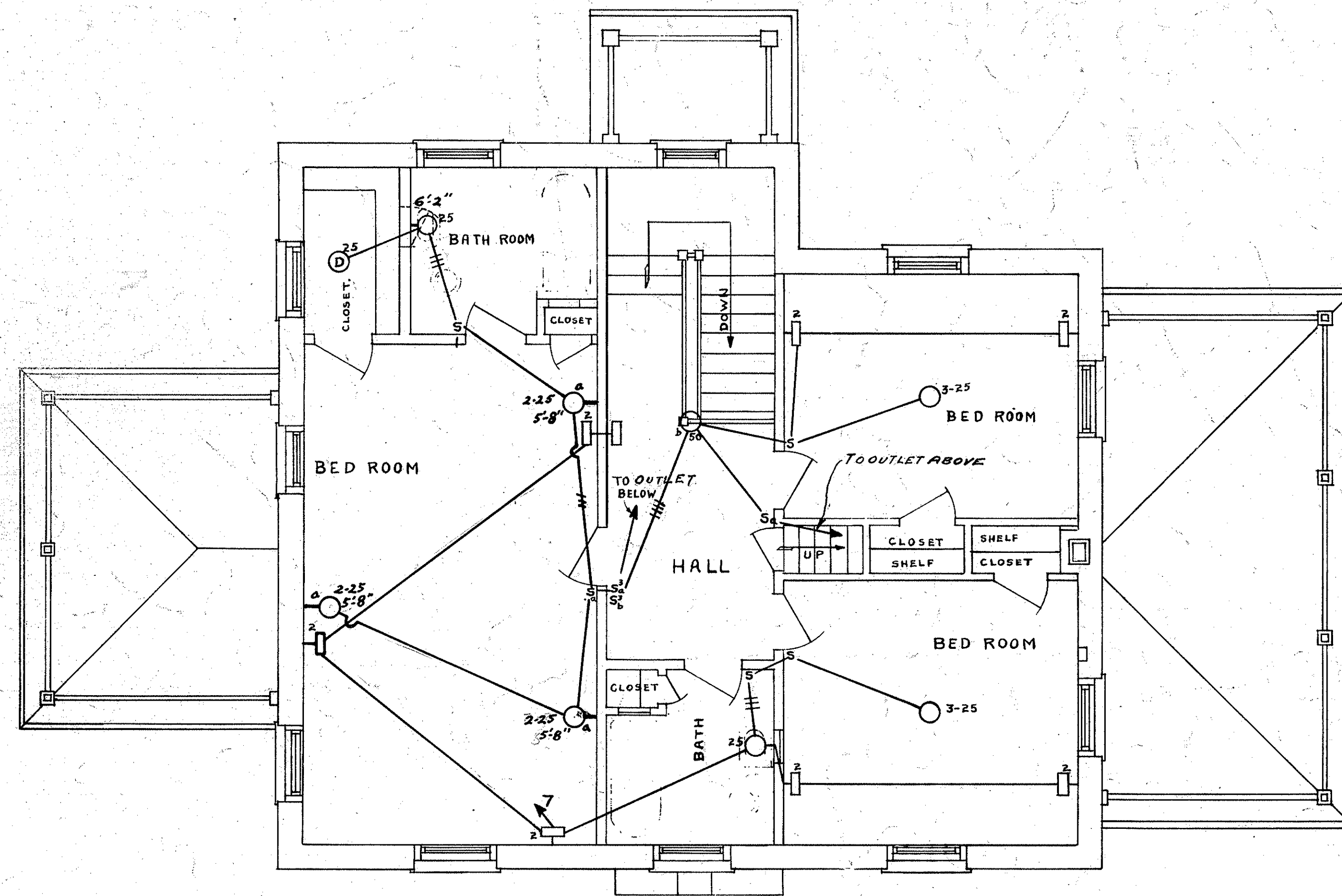
VETERANS ADMINISTRATION
WASHINGTON, D. C.
APPROVED: *Frank D. Hines*
ADMINISTRATOR
George E. Gains
ASSISTANT ADMINISTRATOR
J. H. Smith
DIRECTOR OF CONSTRUCTION
W. J. Davis
CHIEF, TECHNICAL DIVISION

MANAGERS' QTRS HEATING.		
M-0-C-RESIDENCE BLDG. #6		
VETERANS ADMINISTRATION HOSPITAL DES MOINES, IOWA.		
Drawn Copeland	REVISIONS	NUMBER
Traced		6-5
Sect. Chf. <i>4/7</i>		
Date APRIL 22-1932		SHEET 5 OF 6
Sub-Division Chief <i>W. J. Davis</i>		

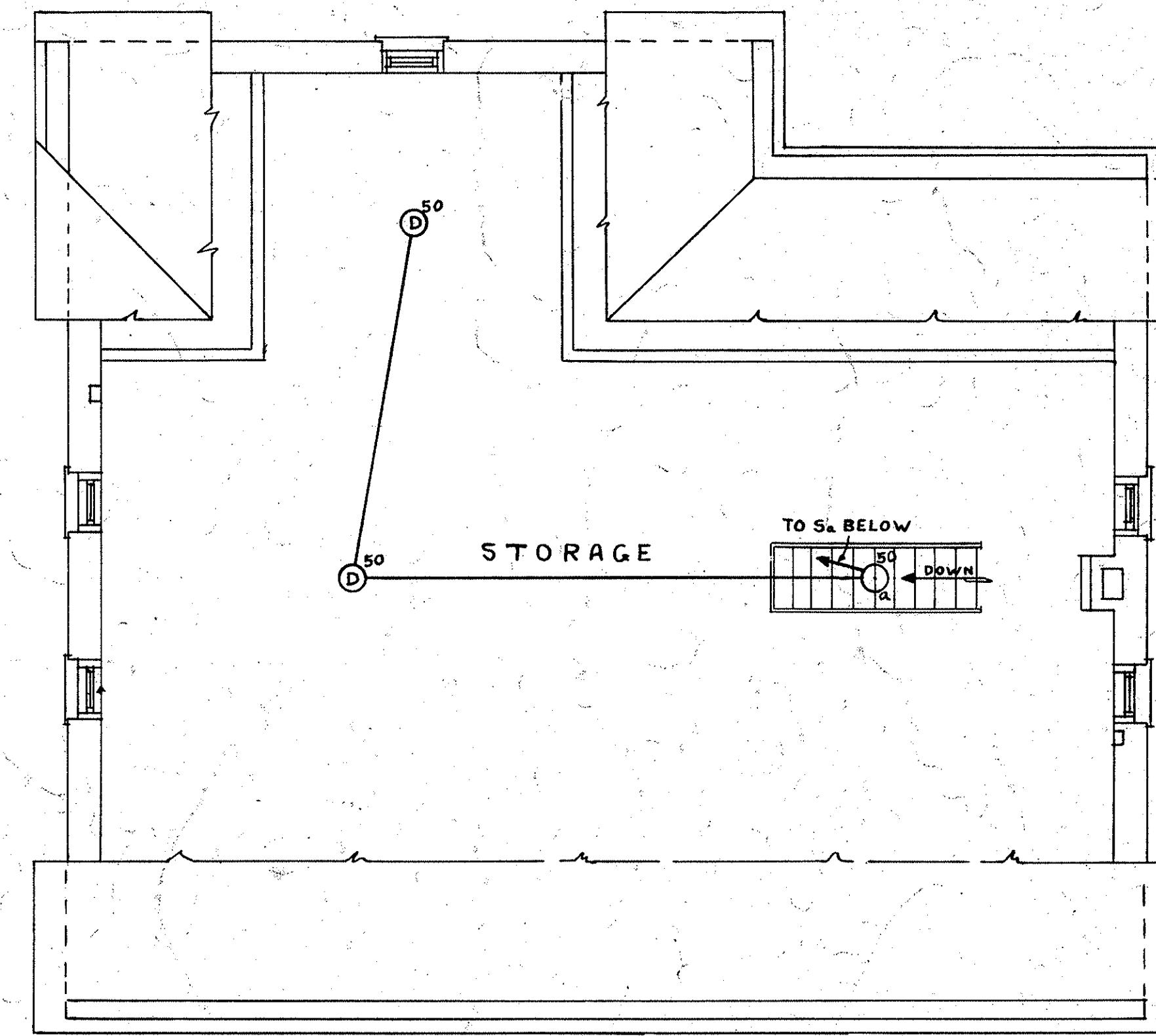
TOTAL DIRECT RADIATION - 508 1/2 f.

RETURN TRACINGS TO PLAN FILES

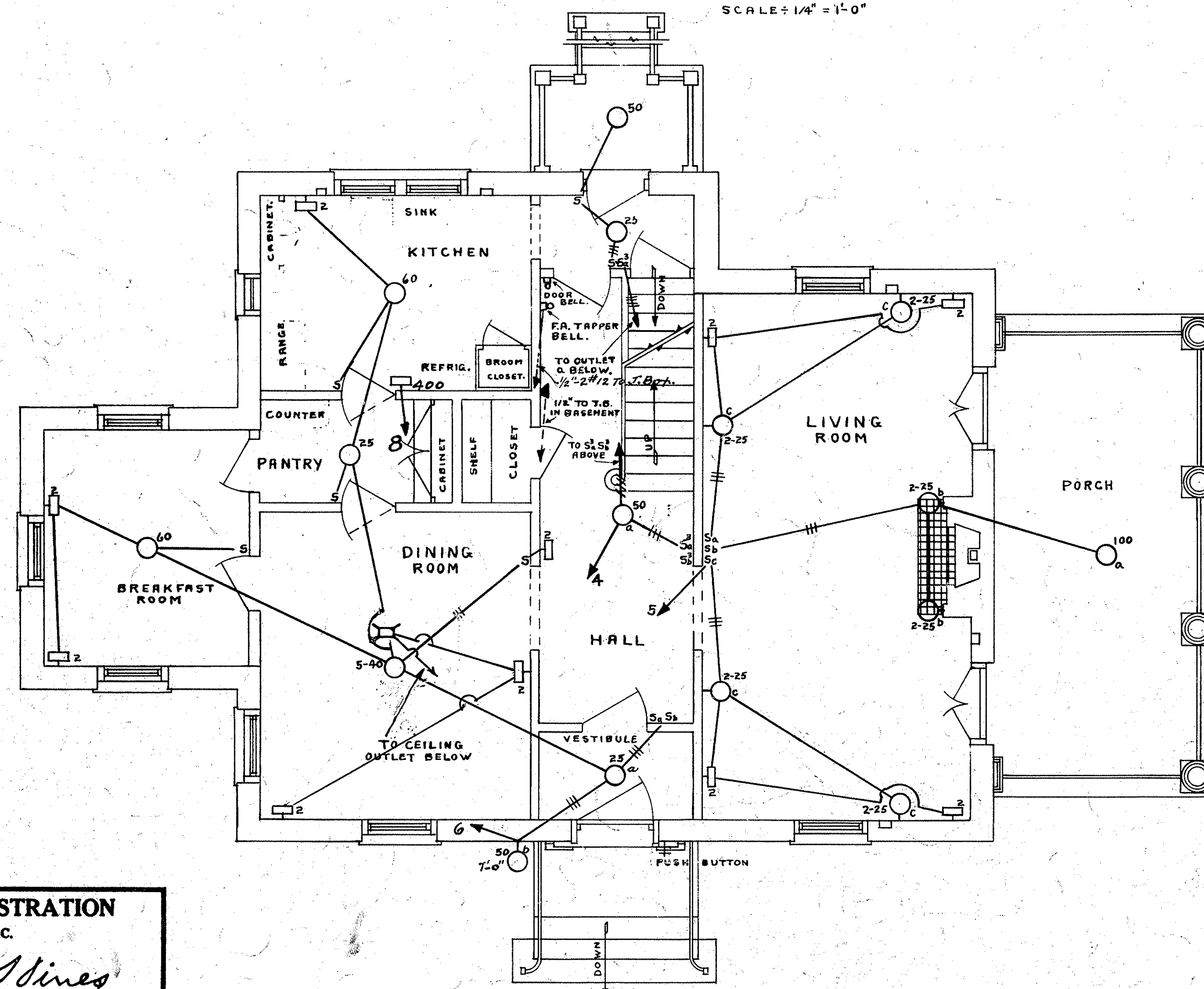
FILE FOLDER NO. 3



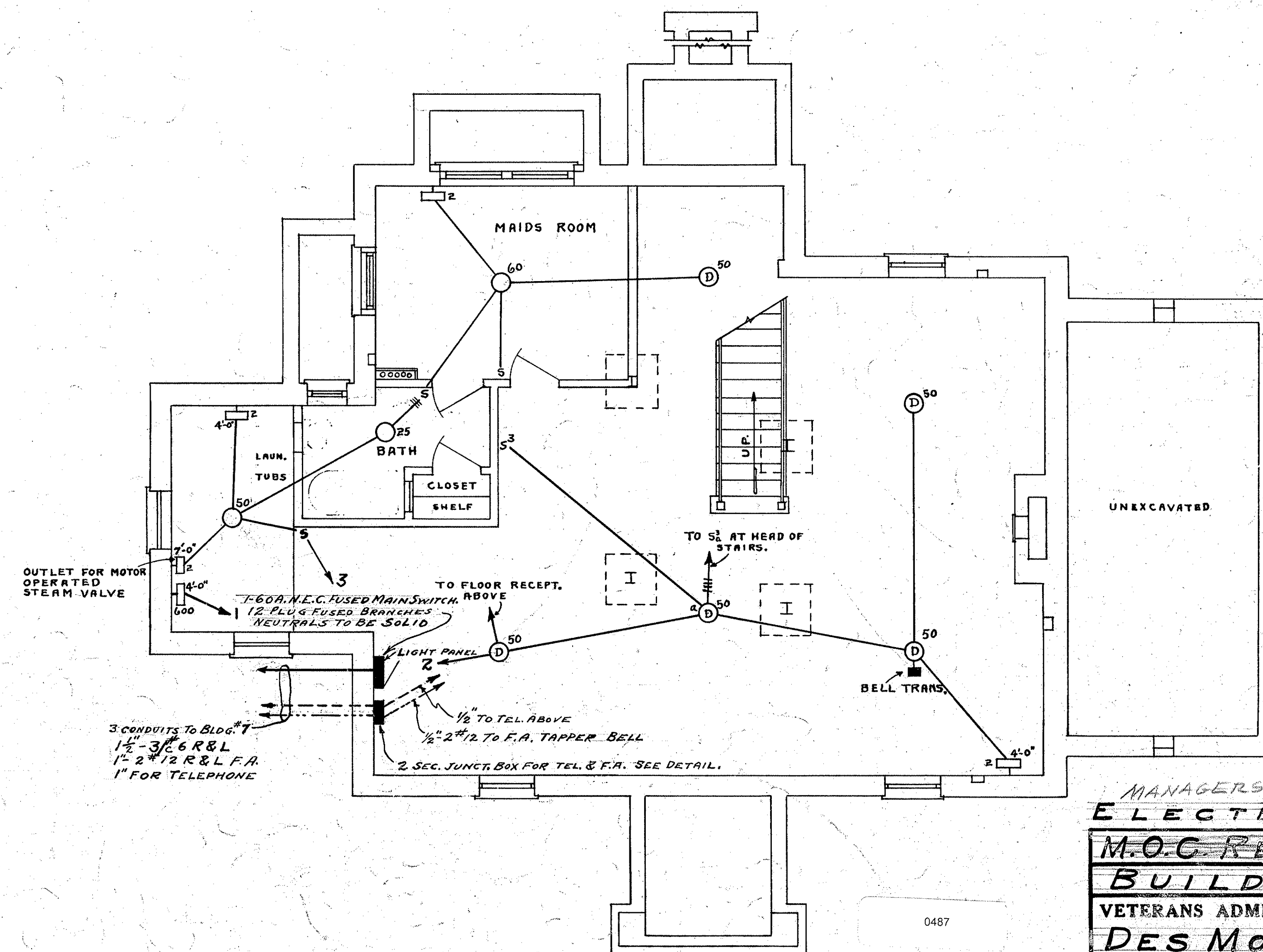
SECOND FLOOR PLAN
SCALE: 1/4" = 1'-0"



ATTIC PLAN
SCALE: 1/4" = 1'-0"



FIRST FLOOR PLAN
SCALE: 1/4" = 1'-0"



BASEMENT FLOOR PLAN
SCALE: 1/4" = 1'-0"

VETERANS ADMINISTRATION
WASHINGTON, D. C.

APPROVED: *Frank D. Hines*
ADMINISTRATOR

George B. Davis
ASSISTANT ADMINISTRATOR

J. H. Smith
DIRECTOR OF CONSTRUCTION

W. J. Talbot
CHIEF, TECHNICAL DIVISION

MANAGERS, QTRS.
ELECTRICAL WIGHI.

M.O.C. RESIDENCE
BUILDING No. 6
VETERANS ADMINISTRATION HOSPITAL
DES MOINES-IOWA

Drawn: <i>A.C.D.</i>	REVISIONS	NUMBER
Traced: <i>A.C.D.</i>		6-6
Sect. Chf. <i>F.W.</i>		6-6
Date: <i>Apr 22, 32</i>		
Sub-Division Chief		