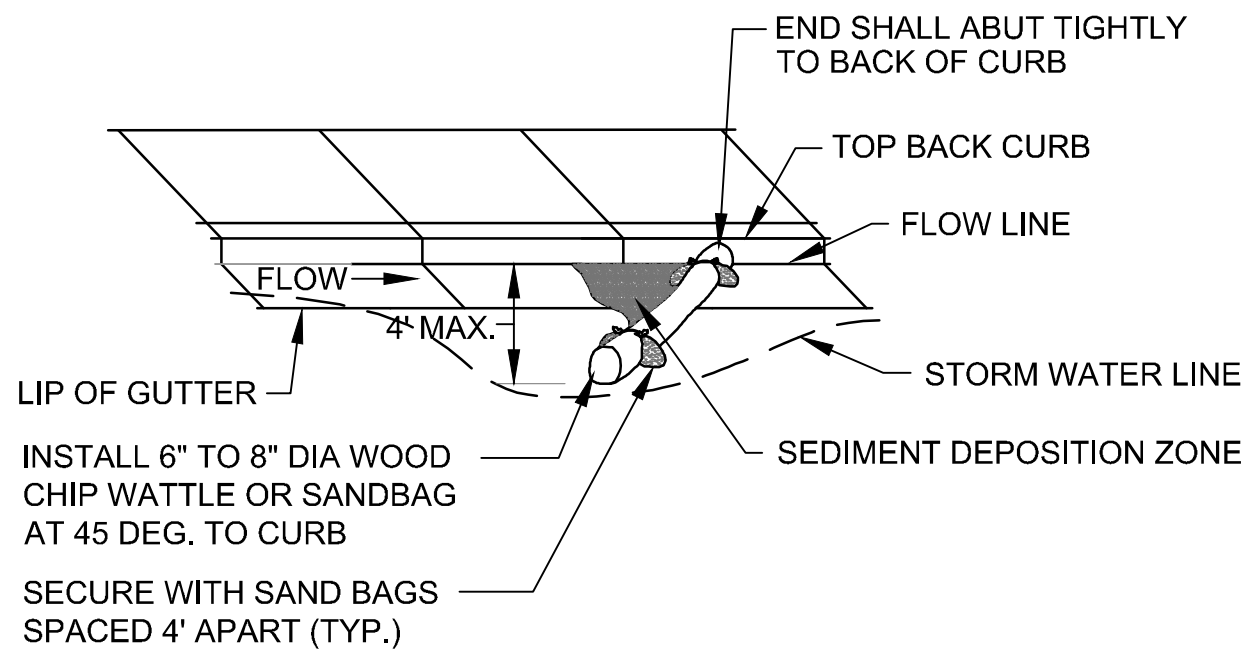


GENERAL NOTES:

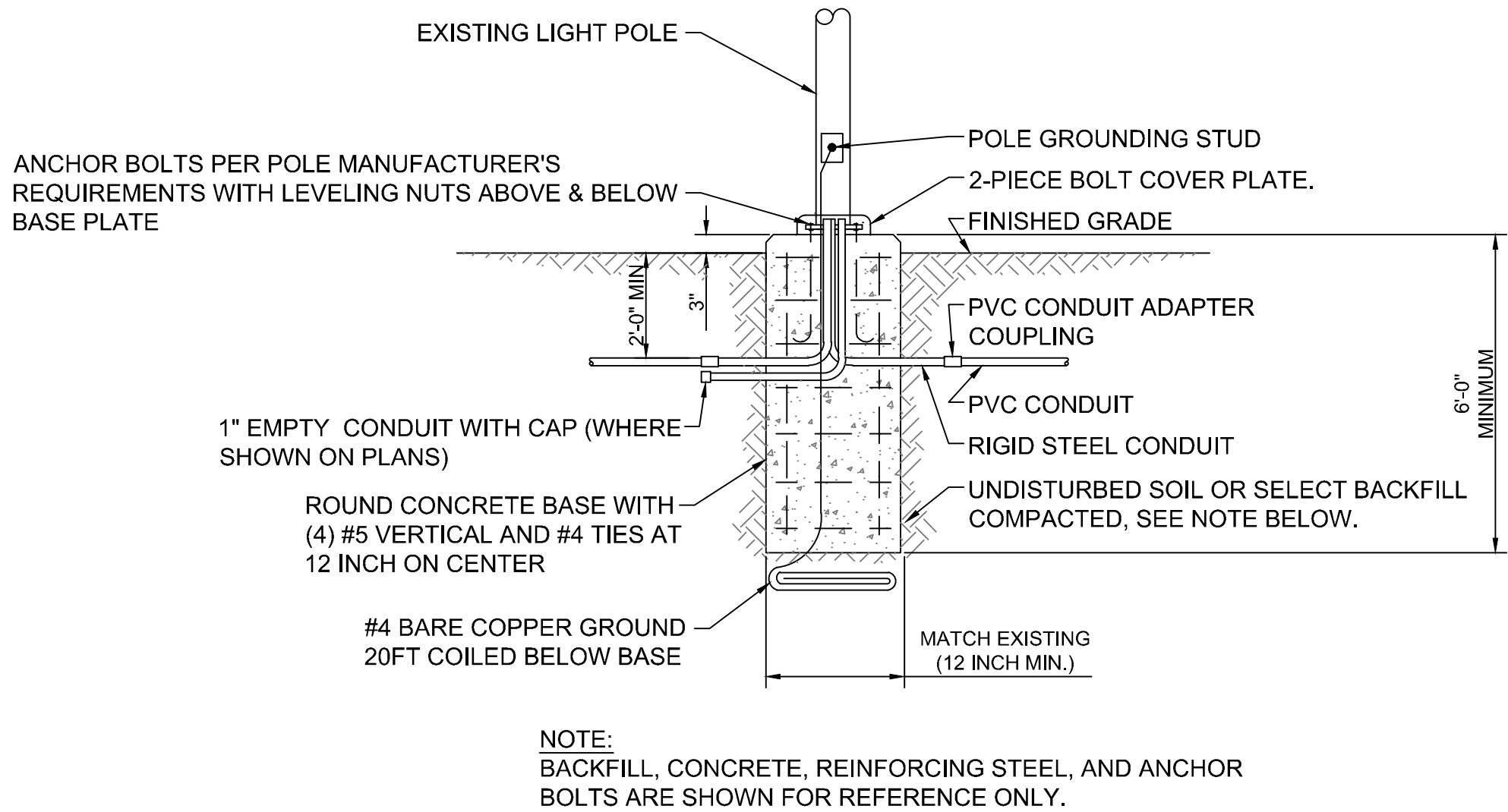
1. AT CUT OR FILL SLOPE INSTALLATIONS WATTLES SHALL BE INSTALLED ALONG THE CONTOUR AND PERPENDICULAR TO THE WATER FLOW.
2. AT DITCH INSTALLATIONS, POINT "A" MUST BE HIGHER THAN POINT "B" SO THAT WATER FLOWS OVER THE WATTLE AND NOT AROUND THE ENDS.
3. THE CONTRACTOR SHALL DIG A 3" TO 5" TRENCH, INSTALL THE WATTLE TIGHTLY IN THE TRENCH SO THAT DAYLIGHT CAN NOT BE SEEN UNDER THE WATTLE, AND THEN COMPACT THE SOIL EXCAVATED FROM THE TRENCH AGAINST THE WATTLE ON THE UPHILL SIDE, SEE DETAIL B.
4. THE STAKES SHALL BE 1"x2" OR 2"x2" WOOD STAKES. HOWEVER, OTHER TYPES OF STAKES SUCH AS REBAR MAY BE USED. THE STAKES SHALL BE PLACED 6" FROM THE ENDS OF THE WATTLES AND THE SPACING OF THE STAKES ALONG THE WATTLES SHALL BE 3' TO 4'.
5. WHERE INSTALLING RUNNING LENGTHS OF WATTLES, THE CONTRACTOR SHALL BUTT THE SECOND WATTLE TIGHTLY AGAINST THE FIRST AND SHALL NOT OVERLAP THE ENDS, SEE DETAIL C.

SEDIMENT CONTROL WATTLE  
N.T.S.

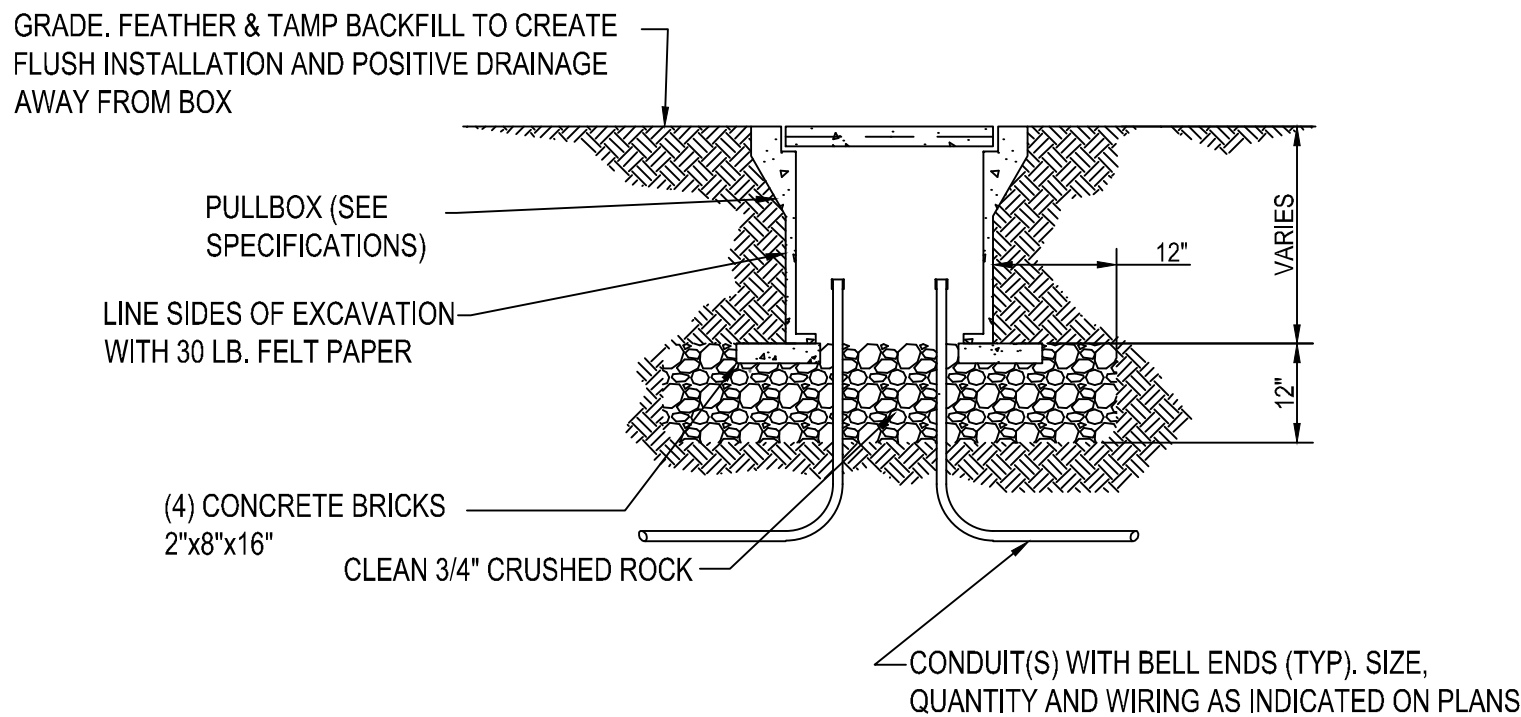


\* INSTALL ONE OR MORE GUTTER WATTLES OR SANDBAGS BETWEEN IMPACTED INLETS AND CONSTRUCTION DISTURBANCE. NUMBER OF WATTLES AND SPACING SHOULD BE DETERMINED BY THE SITE CONDITIONS.

GUTTER PROTECTION  
N.T.S.



POLE BASE DETAIL FOR TURF AREAS  
N.T.S.



UNDERGROUND CONCRETE PULLBOX  
N.T.S.



FOR CONSTRUCTION



517 7th street  
rapid city sd 57701  
p 605.342.9470  
f 605.342.2377  
www.4front.biz

Office of  
Construction  
and Facilities  
Management

Department of  
Veterans Affairs

HSVA  
RIVER STREET  
WATERSHED  
IMPROVEMENTS  
VETERANS  
ADMINISTRATION

HOT SPRINGS, SOUTH DAKOTA

REVISIONS:  
REVISIONS 11/26/12

Project Number: 568-13-202  
Date: 11/26/12

DETAILS

C9.04