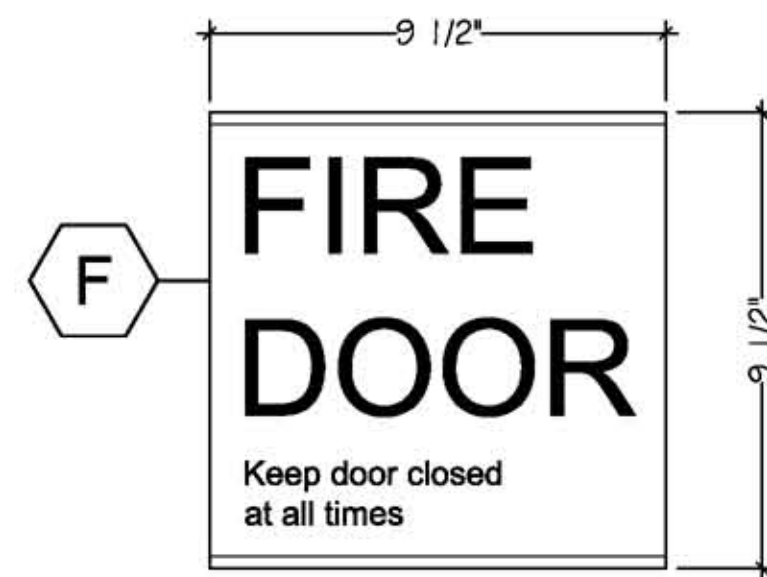
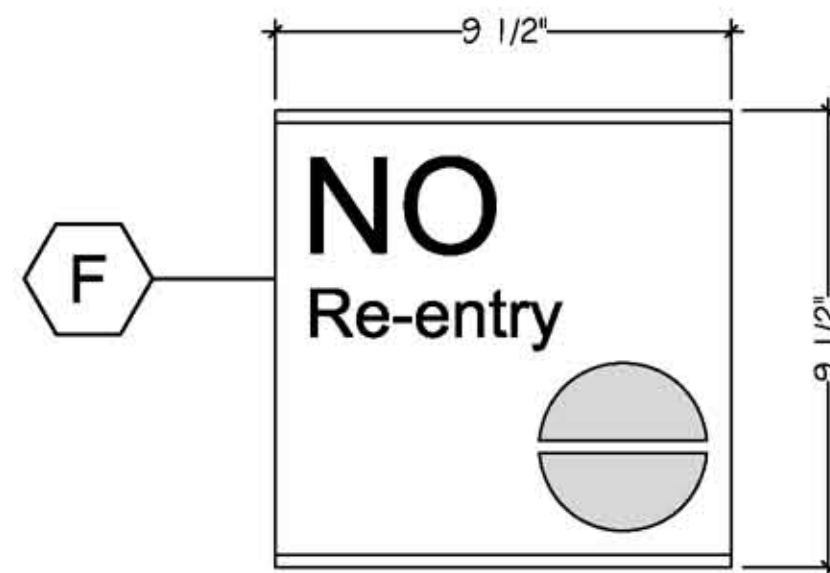


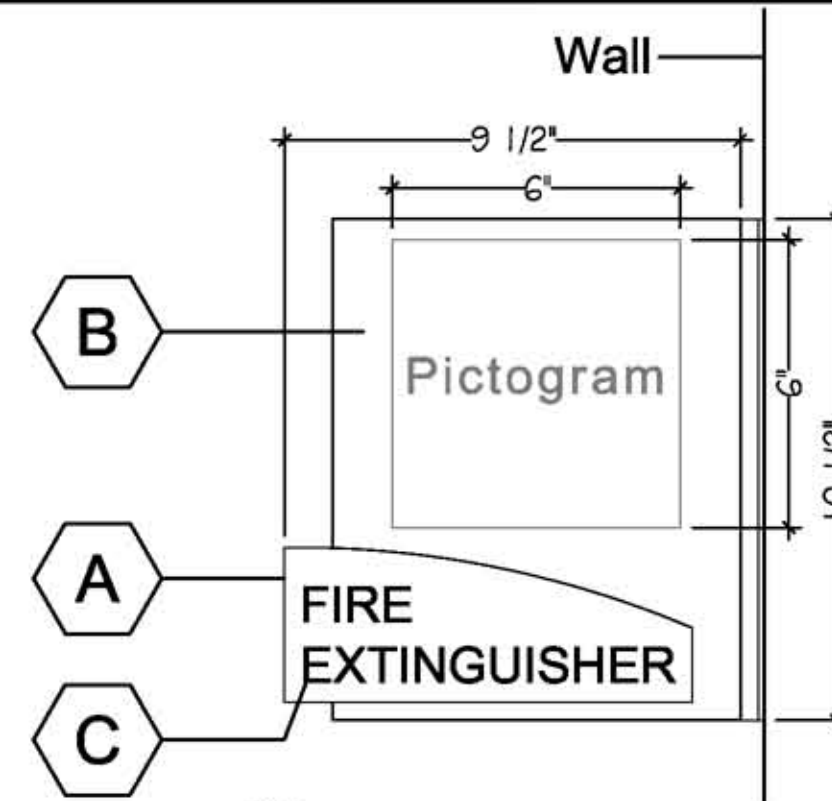
one and one half inches = one foot
one inch = one foot
three quarters inch = one foot
one quarter inch = one foot
one eighth inch = one foot



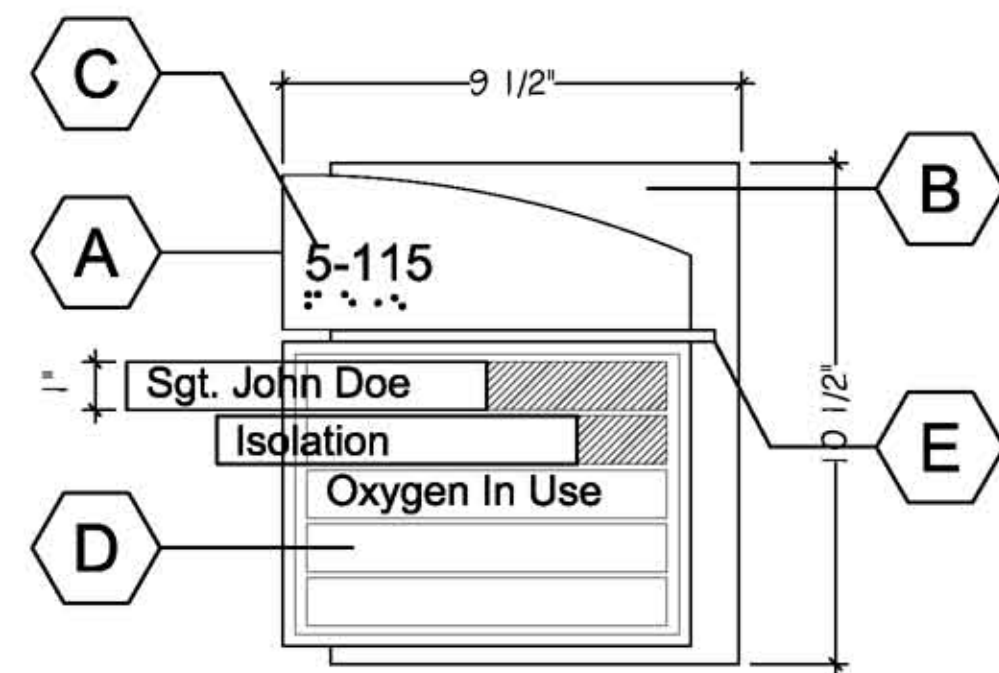
6 IN-01.05
3\"/>



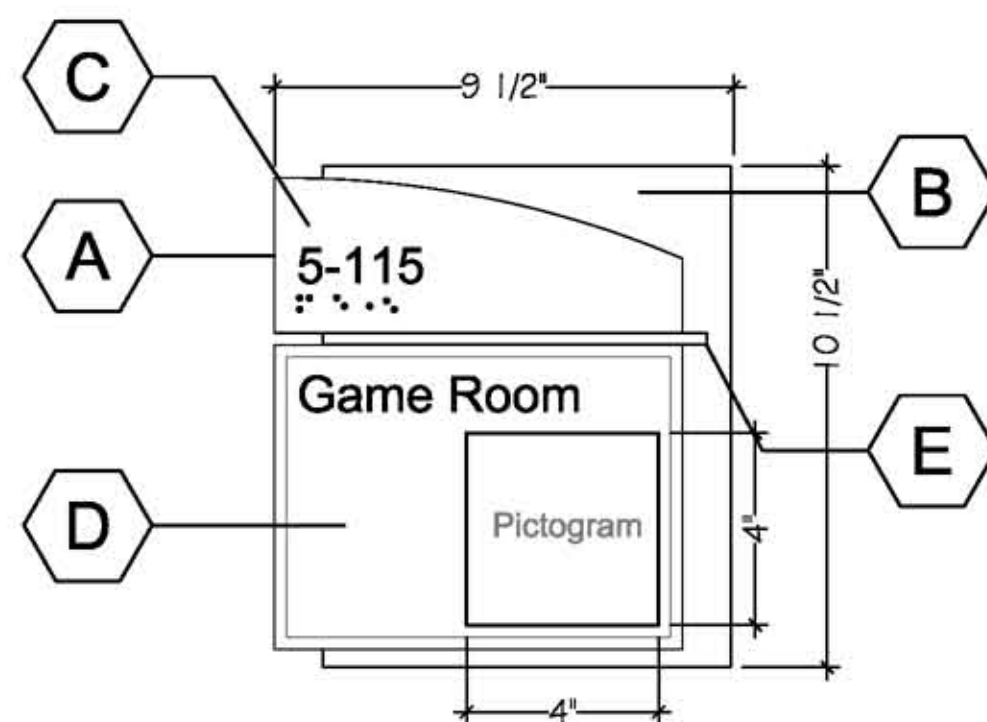
7 IN-01.30
3\"/>



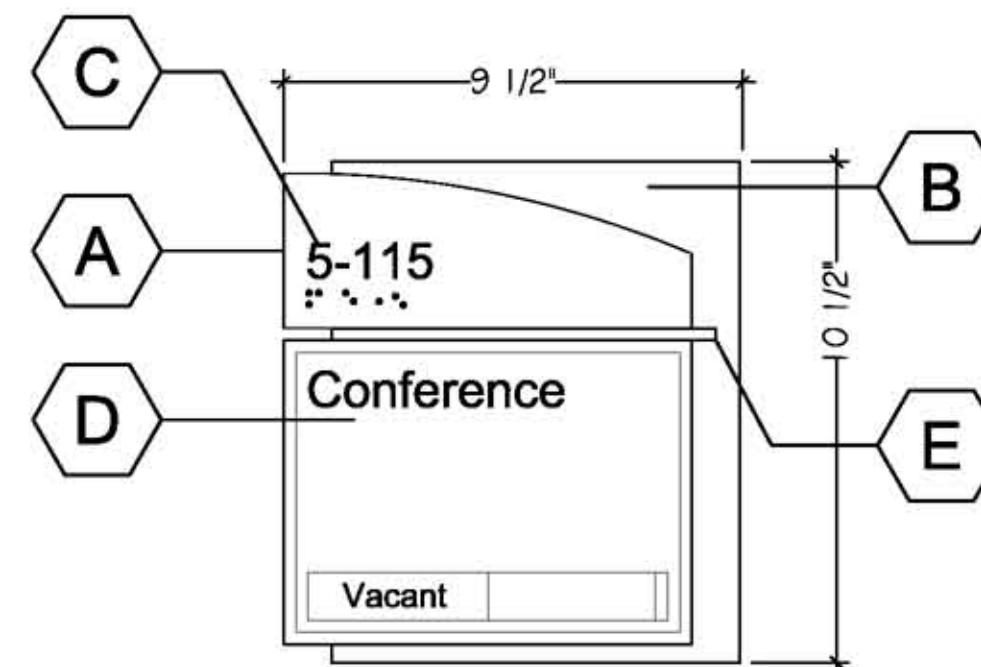
8 IN-01.
3\"/>



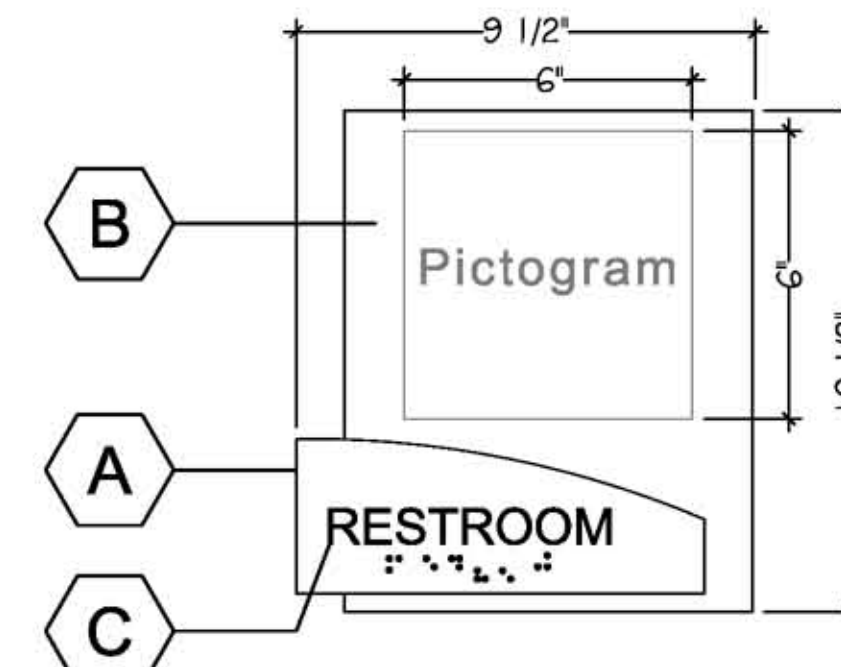
11 IN-05.01-2
3\"/>



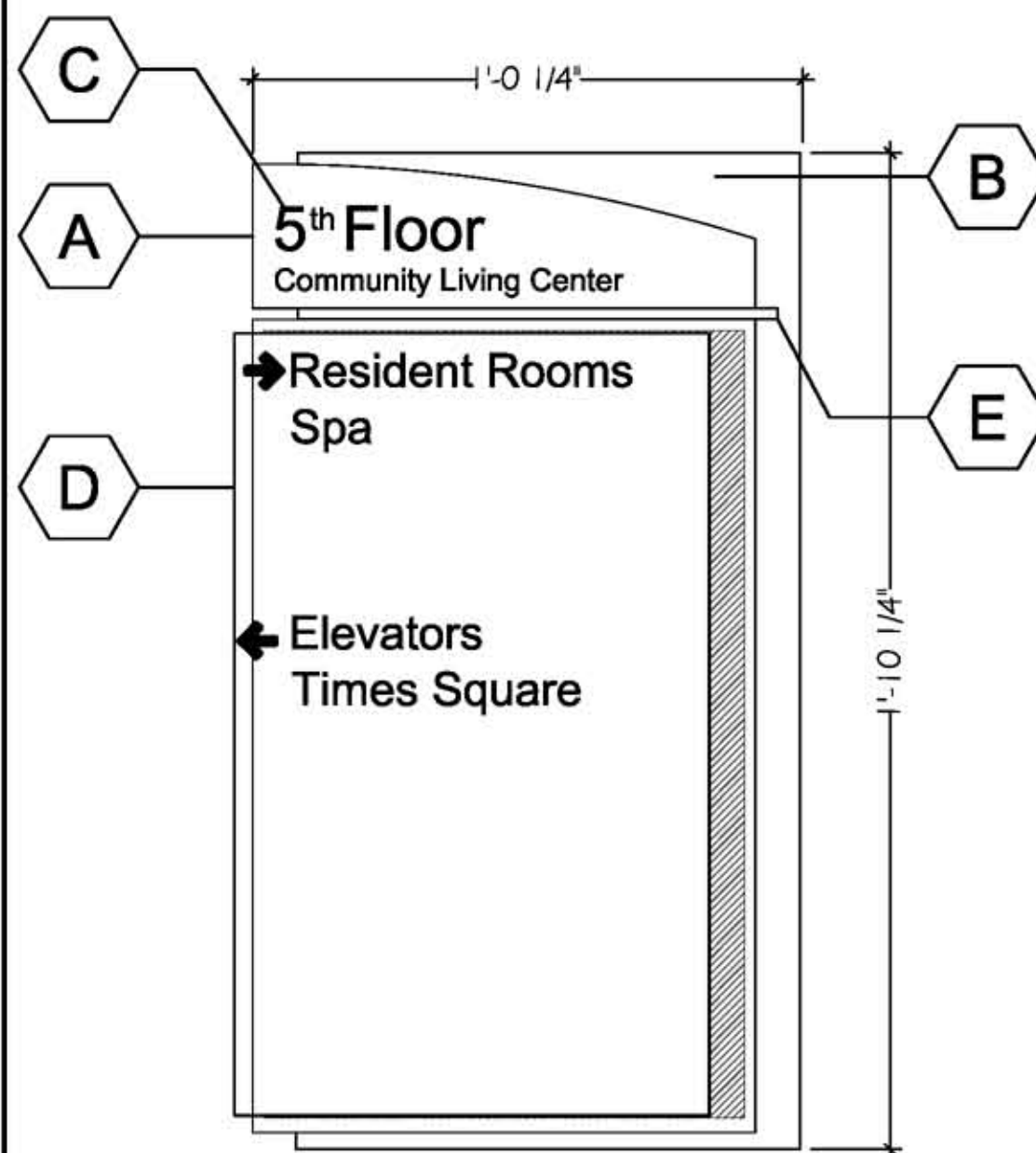
9 IN-04.01
3\"/>



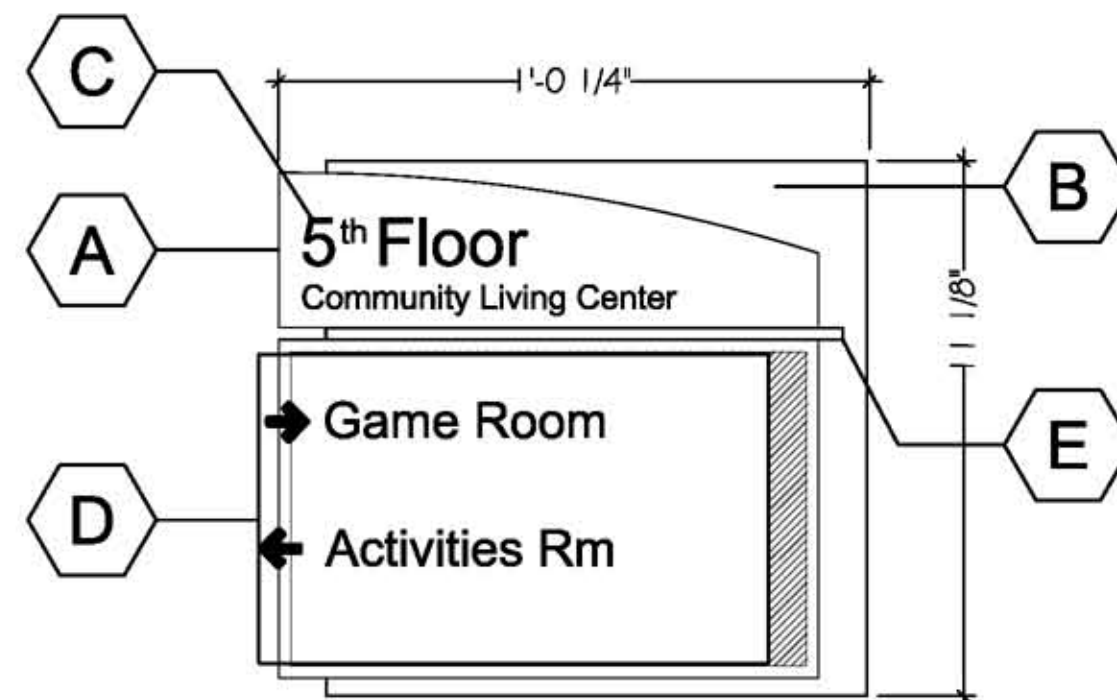
13 IN-07.01-3
3\"/>



14 IN-09.01-7
3\"/>



15 IN-14.01
3\"/>



16 IN-14.02
3\"/>

SIGNAGE LEGEND

IN-01.01.03	Interior	Emergency Exit Plan
IN-01.04		Elevator Call Button (Modified)
IN-01.10		Stair Identification
IN-01.12		Area of Refuge
IN-01.03		Fire Procedure
IN-01		Fire Extinguisher
IN-04.01	Interior	Primary Room Identification
IN-04.02		Secondary Room Identification
IN-05.01-2	Interior	Patient Room Identification
IN-07.01-3	Interior	Conference / Meeting Room
IN-09.01-7	Interior	Pictogram & Symbol Signs
IN-14.01	Interior	Wall Directional Sign - Large
IN-14.02		Wall Directional Sign - Small
IN-14		Wall Directional Flag Mount
IN-15.01-4	Interior	Ceiling Mounted Directional Sign

SIGN FINISH KEY

A	FACE MATERIAL: Natural Maple LW756
B	BACKER MATERIAL: Dark Pearwood LW103
C	RAISED COPY: Meta Bold MB101 Tranquility CO302
D	INSERT: Image 18 Tranquility CO302
E	METAL ACCENT: Natural
F	ACRYLIC CONSTRUCTION: Digitally printed to resemble project finishes.
G	FRAME: Finished Oak
H	GLASS: Clear Plexiglass
I	INTERIOR: Burgundy felt over tackable surface for pin mounting

Note: All finishes listed above are
Takeform Signs standard finishes.

CONSULTANTS:		ARCHITECT/ENGINEERS:		Drawing Title INTERIOR SIGNS		Project Title RELOCATE DEMENTIA UNIT		Project Number VA PN 613-107		Office of Construction and Facilities Management	
		C.C. HODGSON ARCHITECTURAL GROUP P.C.		Approved: Project Director		Location VAMC MARTINSBURG		Building Number 513		Department of Veterans Affairs	
Revisions:				Date 8/6/2013 REV. 11/16/2012		Checked Author		Drawing Number AE-907		Dwg. of --	