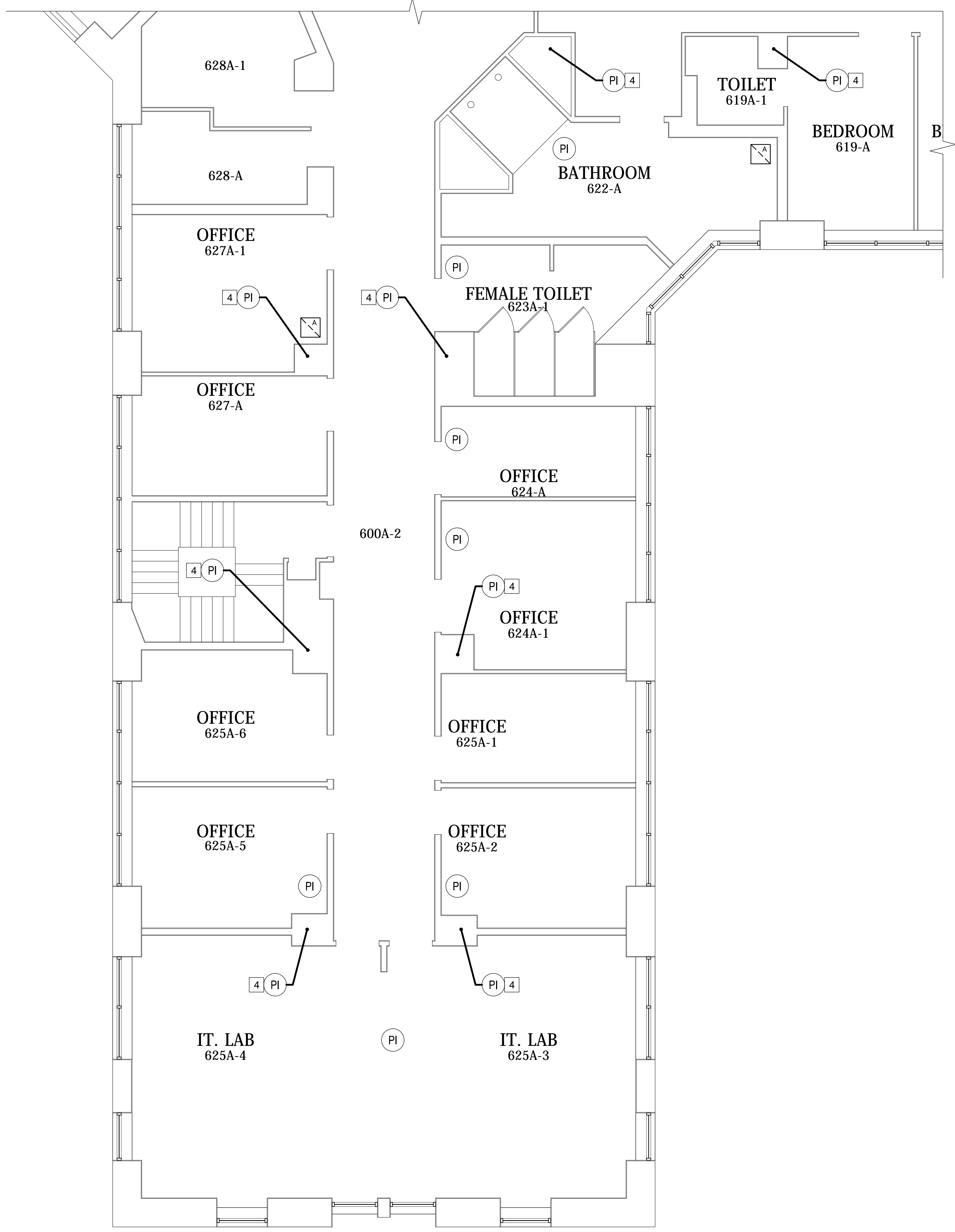


three inches = one foot  
one and one-half inch = one foot  
one inch = one foot  
three-quarters inch = one foot  
one-half inch = one foot  
three-eighths inch = one foot  
one-quarter inch = one foot  
one-eighth inch = one foot



Sixth Floor Plan - Hazardous Materials Removals  
1/4" = 1'-0"

ABATEMENT NOTES

- ASBESTOS-CONTAINING MATERIAL (ACM) AND LEAD-CONTAINING MATERIAL (LCM) LOCATIONS AND QUANTITIES ARE BASED ON SIENNA ENVIRONMENTAL TECHNOLOGIES REPORT DATED MARCH 9, 2012 AND TITLED "ASBESTOS, LEAD-BASED PAINT AND PCB INSPECTIONS OF VA WESTERN NEW YORK HEALTHCARE SYSTEM REMODEL WARD 7A-INFUSION" WITHIN THE AREA DEFINED IN THE PROJECT SCOPE AT THE TIME OF THE INVESTIGATION AS THE PROJECT AREA.
- IT IS NOTED THAT ADDITIONAL ACM, LCM AND/OR PCB LOCATIONS MAY BE PRESENT IN WALL, CEILING, AND FLOOR CAVITIES THAT WERE INACCESSIBLE DURING SAMPLING OR THAT WERE NOT SAMPLED AS PART OF THIS OR PREVIOUSLY CONDUCTED INVESTIGATIONS. IF ASBESTOS OR SUSPECT MATERIALS ARE DISCOVERED AND/OR DISTURBED, NOTIFY THE OWNER AND/OR OWNER'S REPRESENTATIVE IMMEDIATELY. IF BULK SAMPLING IS REQUIRED, THE ON-SITE PROJECT-MONITORING FIRM WILL BE RESPONSIBLE FOR THIS WORK ACTIVITY.
- COORDINATE ALL ASBESTOS REMOVAL WITH OTHER CONTRACTORS AND OWNER'S REPRESENTATIVE.
- THE OWNER SHALL PROCURE A NYSDOL CERTIFIED PROJECT MONITOR WHO WILL HAVE THE AUTHORITY TO HALT ABATEMENT WORK IF SUCH WORK IS NOT BEING CONDUCTED IN ACCORDANCE WITH THE CONTRACT DOCUMENTS OR REGULATIONS.
- ALL ASBESTOS ABATEMENT WORK MUST BE COMPLETED PRIOR TO ANY DEMOLITION, UNLESS REQUIRED TO ACCESS THE ASBESTOS, IF ASBESTOS OR SUSPECT ASBESTOS CONTAINING MATERIALS ARE UNCOVERED OR DISCOVERED DURING THE DEMOLITION OR ANY OTHER CONSTRUCTION ACTIVITY. ALL WORK SHALL CEASE AND THE OWNER AND/OR OWNERS REPRESENTATIVE SHALL BE NOTIFIED IMMEDIATELY.
- ASBESTOS ABATEMENT SHALL BE COMPLETED PRIOR TO LEAD REMOVAL. COORDINATE ALL UNIVERSAL WASTE REMOVAL WITH INDIVIDUAL TRADES.
- ABATEMENT CONTRACTOR SHALL DECONTAMINATE ALL WALL CAVITIES.
- CONTAINMENT AREAS AND WORK LOCATIONS TO BE SELECTED AND SIZED BY THE CONTRACTOR AND SHALL BE CONSISTENT WITH THE CONSTRUCTION PHASE SEQUENCES ESTABLISHED BY THE OWNER.
- CONTRACTOR SHALL RESTORE AND REPAIR, TO THE OWNER'S SATISFACTION, ANY DAMAGE CAUSED TO ANY AREA OF THE BUILDING OR BUILDING FINISHES AS A RESULT OF TEMPORARY PROTECTION REQUIRED FOR ACM ABATEMENT.
- ALL ABATEMENT SHALL BE COMPLETED IN ACCORDANCE WITH SPECIFICATION SECTIONS 028211 - ASBESTOS REMOVAL, 028333 - LEAD ABATEMENT, AND IN ACCORDANCE WITH ALL APPLICABLE LOCAL, STATE, AND FEDERAL RULES, REGULATIONS AND GUIDELINES, VARIANCES AND THE CONTRACT DOCUMENTS.
- THESE DOCUMENTS ARE A GRAPHIC REPRESENTATION OF AREAS TO BE ABATED. IT IS THE ABATEMENT CONTRACTOR'S RESPONSIBILITY TO FIELD VERIFY ALL EXISTING CONDITIONS AND QUANTITIES PRIOR TO SUBMITTING A BID. IF THERE ARE ANY DISCREPANCIES BETWEEN EXISTING CONDITIONS AND WHAT IS SHOWN ON THE CONTRACT DOCUMENTS, THE CONTRACTOR SHALL REPORT SAID DISCREPANCIES TO THE OWNER PRIOR TO SUBMITTING BID. ADDITIONAL ACMs, LCMs AND/OR PCBs MAY REMAIN IN THE BUILDING BEYOND THAT IDENTIFIED HEREIN. ABATEMENT IS SHOWN ONLY FOR ACMs, LCMs AND/OR PCBs THAT WILL BE DISTURBED AS PART OF THIS PROJECT.
- THE ABATEMENT CONTRACTOR SHALL DETERMINE THE SIZE AND LOCATION OF THE PERSONNEL AND WASTE DECONTAMINATION ENCLOSURES, ASBESTOS WASTE DUMPSTER LOCATION, AS WELL AS THE TRANSPORTATION ROUTE. THESE LOCATIONS SHALL BE REVIEWED AND APPROVED BY THE OWNER'S REPRESENTATIVE PRIOR TO COMMENCEMENT OF WORK. THE ABATEMENT CONTRACTOR SHALL PROVIDE SECURITY AS REQUIRED TO PROPERLY PROTECT THE ENCLOSURE ASSEMBLY FROM DAMAGE AND/OR VANDALISM.
- THE ABATEMENT CONTRACTOR IS RESPONSIBLE FOR ALL TOOLS, EQUIPMENT AND SUPPLIES. THE OWNER'S REPRESENTATIVE WILL NOT BE LIABLE FOR THEFT OR DAMAGE. THE LOCATION OF ANY SITE STORAGE OF MATERIAL, EQUIPMENT AND WASTE TRAILER/DUMPSTER SHALL BE COORDINATED WITH AND APPROVED BY THE OWNER'S REPRESENTATIVE.
- DUMPSTER LOCATION MUST BE APPROVED BY V.A.M.C. PRIOR TO BEING BROUGHT ON SITE.

LEGEND

- AC ASBESTOS-CONTAINING
- ACM ASBESTOS-CONTAINING MATERIAL
- LF LINEAR FEET
- SF SQUARE FEET
- PI REMOVE ASBESTOS-CONTAINING PIPE INSULATION AND DISPOSE OF AS ACM.

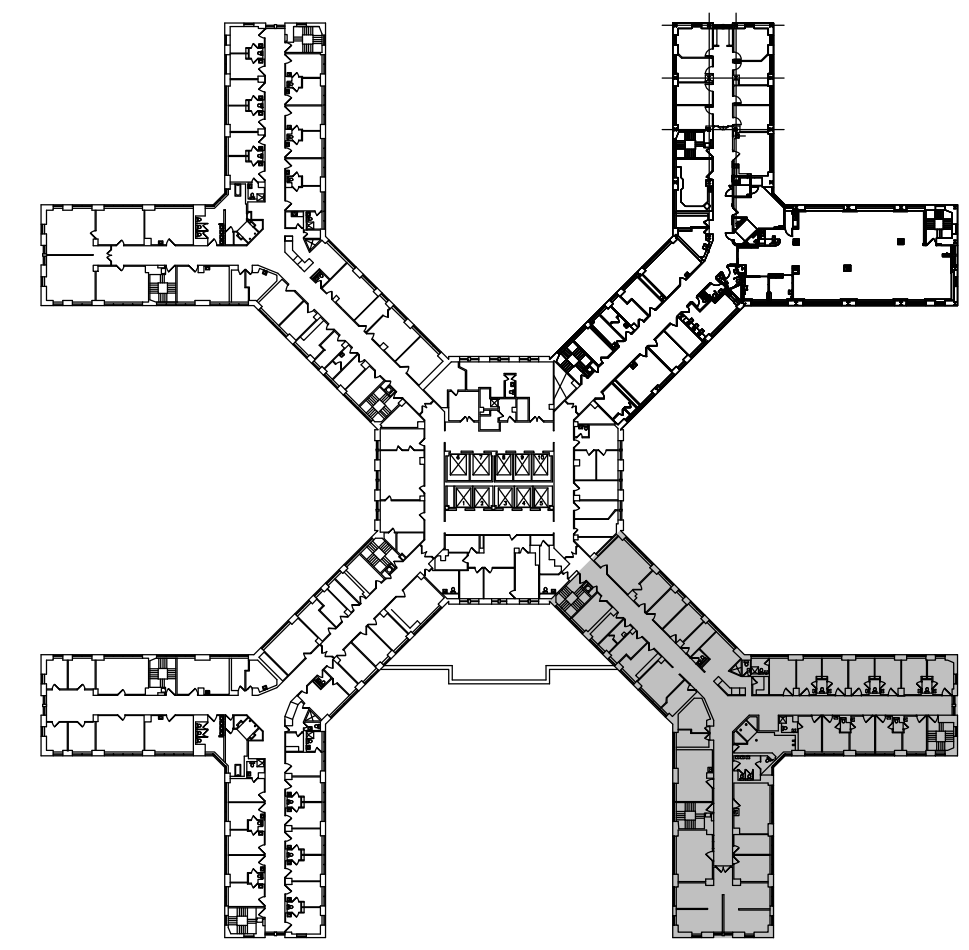
APPROXIMATE QUANTITIES

- PI 150 LF

SPECIFIC NOTES

- WORK SHALL BE COMPLETED IN CONJUNCTION WITH PHASE 1. SEE DWG. 11-102-A003
- WORK SHALL BE COMPLETED IN CONJUNCTION WITH PHASE 2. SEE DWG. 11-102-A003
- WORK SHALL BE COMPLETED IN CONJUNCTION WITH PHASE 3. SEE DWG. 11-102-A003
- REMOVE ASBESTOS PIPE WRAP WITHIN CHASE. COORDINATE WITH PLUMBING CONTRACTOR. WORK SHALL BE COMPLETED IN CONJUNCTION WITH CORRECT PHASE. SEE DWG. 11-102-A003.

100% SUBMISSION



Key Plan  
N.T.S.

 VA WESTERN NEW YORK HEALTHCARE SYSTEM 3495 BAILEY AVENUE BUFFALO, NEW YORK 14215		 FONTANESE FOLTS AUBRECHT ERNST ARCHITECTS P: (716) 862-2200 F: (716) 862-0072 6395 W. QUAKER STREET ORCHARD PARK, NY 14127 Architect		 Architect's Stamp		MECHANICAL/ELECTRICAL ENGINEERS: IBC Engineering, P.C. 2495 Main Street, Suite 318 Buffalo, NY 14214 (716) 836-2315 FAX: (716) 836-2315 COST CONSULTANTS: BAER AND ASSOCIATES 2495 Main Street Suite 470 Buffalo, NY 14214 (716) 831-0000 FAX: (716) 831-0001 Sub Consultants		ENVIRONMENTAL ENGINEERS: FISHER ASSOCIATES 325 Delaware Ave Suite 200 Buffalo, NY 14202 (716) 858-1234 FAX: (716) 858-1231		 Engineer's Stamp		CARDIOLOGY MANAGER DATE ENGINEERING MANAGER DATE INFECTION CONTROL DATE CARELINE MANAGER DATE SAFETY OFFICER DATE CHIEF OF STAFF DATE		Drawing Title SIXTH FLOOR PLAN HAZARDOUS MATERIALS REMOVALS Medical Center Director DATE Associate Medical Center Director DATE		Project Title REMODEL WARD 7A - INFUSION CENTER Building Number 1 Checked JJD Drawn MTS Location V.A.M.C. BUFFALO, NEW YORK		Date OCTOBER 22, 2012 Station No. 528 11-102-HA101			
---	--	---	--	-----------------------	--	--	--	---	--	----------------------	--	--	--	--	--	---	--	--	--	--	--



ABATEMENT NOTES

- ASBESTOS-CONTAINING MATERIAL (ACM) AND LEAD-CONTAINING MATERIAL (LCM) LOCATIONS AND QUANTITIES ARE BASED ON SIENNA ENVIRONMENTAL TECHNOLOGIES REPORT DATED MARCH 9, 2012 AND TITLED "ASBESTOS, LEAD-BASED PAINT AND PCB INSPECTIONS OF VA WESTERN NEW YORK HEALTHCARE SYSTEM REMODEL WARD 7A-INFUSION" WITHIN THE AREA DEFINED IN THE PROJECT SCOPE AT THE TIME OF THE INVESTIGATION AS THE PROJECT AREA.
- IT IS NOTED THAT ADDITIONAL ACM, LCM AND/OR PCB LOCATIONS MAY BE PRESENT IN WALL, CEILING, AND FLOOR CAVITIES THAT WERE INACCESSIBLE DURING SAMPLING OR THAT WERE NOT SAMPLED AS PART OF THIS OR PREVIOUSLY CONDUCTED INVESTIGATIONS. IF ASBESTOS OR SUSPECT MATERIALS ARE DISCOVERED AND/OR DISTURBED, NOTIFY THE OWNER AND/OR OWNER'S REPRESENTATIVE IMMEDIATELY. IF BULK SAMPLING IS REQUIRED, THE ON-SITE PROJECT-MONITORING FIRM WILL BE RESPONSIBLE FOR THIS WORK ACTIVITY.
- COORDINATE ALL ASBESTOS REMOVAL WITH OTHER CONTRACTORS AND OWNER'S REPRESENTATIVE.
- THE OWNER SHALL PROCURE A NYSDOL CERTIFIED PROJECT MONITOR WHO WILL HAVE THE AUTHORITY TO HALT ABATEMENT WORK IF SUCH WORK IS NOT BEING CONDUCTED IN ACCORDANCE WITH THE CONTRACT DOCUMENTS OR REGULATIONS.
- ALL ASBESTOS ABATEMENT WORK MUST BE COMPLETED PRIOR TO ANY DEMOLITION, UNLESS REQUIRED TO ACCESS THE ASBESTOS. IF ASBESTOS OR SUSPECT ASBESTOS CONTAINING MATERIALS ARE UNCOVERED OR DISCOVERED DURING THE DEMOLITION OR ANY OTHER CONSTRUCTION ACTIVITY, ALL WORK SHALL CEASE AND THE OWNER AND/OR OWNERS REPRESENTATIVE SHALL BE NOTIFIED IMMEDIATELY.
- ASBESTOS ABATEMENT SHALL BE COMPLETED PRIOR TO LEAD REMOVAL. COORDINATE ALL UNIVERSAL WASTE REMOVAL WITH INDIVIDUAL TRADES.
- ABATEMENT CONTRACTOR SHALL DECONTAMINATE ALL WALL CAVITIES.
- CONTAINMENT AREAS AND WORK LOCATIONS TO BE SELECTED AND SIZED BY THE CONTRACTOR AND SHALL BE CONSISTENT WITH THE CONSTRUCTION PHASE SEQUENCES ESTABLISHED BY THE OWNER.
- CONTRACTOR SHALL RESTORE AND REPAIR, TO THE OWNER'S SATISFACTION, ANY DAMAGE CAUSED TO ANY AREA OF THE BUILDING OR BUILDING FINISHES AS A RESULT OF TEMPORARY PROTECTION REQUIRED FOR ACM ABATEMENT.
- ALL ABATEMENT SHALL BE COMPLETED IN ACCORDANCE WITH SPECIFICATION SECTIONS 028211 - ASBESTOS REMOVAL, 028333 - LEAD ABATEMENT, AND IN ACCORDANCE WITH ALL APPLICABLE LOCAL, STATE, AND FEDERAL RULES, REGULATIONS AND GUIDELINES, VARIANCES AND THE CONTRACT DOCUMENTS.
- THESE DOCUMENTS ARE A GRAPHIC REPRESENTATION OF AREAS TO BE ABATED. IT IS THE ABATEMENT CONTRACTOR'S RESPONSIBILITY TO FIELD VERIFY ALL EXISTING CONDITIONS AND QUANTITIES PRIOR TO SUBMITTING A BID. IF THERE ARE ANY DISCREPANCIES BETWEEN EXISTING CONDITIONS AND WHAT IS SHOWN ON THE CONTRACT DOCUMENTS, THE CONTRACTOR SHALL REPORT SAID DISCREPANCIES TO THE OWNER PRIOR TO SUBMITTING BID. ADDITIONAL ACMs, LCMs AND/OR PCBs MAY REMAIN IN THE BUILDING BEYOND THAT IDENTIFIED HEREIN. ABATEMENT IS SHOWN ONLY FOR ACMs, LCMs AND/OR PCBs THAT WILL BE DISTURBED AS PART OF THIS PROJECT.
- THE ABATEMENT CONTRACTOR SHALL DETERMINE THE SIZE AND LOCATION OF THE PERSONNEL AND WASTE DECONTAMINATION ENCLOSURES, ASBESTOS WASTE DUMPSTER LOCATION, AS WELL AS THE TRANSPORTATION ROUTE. THESE LOCATIONS SHALL BE REVIEWED AND APPROVED BY THE OWNER'S REPRESENTATIVE PRIOR TO COMMENCEMENT OF WORK. THE ABATEMENT CONTRACTOR SHALL PROVIDE SECURITY AS REQUIRED TO PROPERLY PROTECT THE ENCLOSURE ASSEMBLY FROM DAMAGE AND/OR VANDALISM.
- THE ABATEMENT CONTRACTOR IS RESPONSIBLE FOR ALL TOOLS, EQUIPMENT AND SUPPLIES. THE OWNER'S REPRESENTATIVE WILL NOT BE LIABLE FOR THEFT OR DAMAGE. THE LOCATION OF ANY SITE STORAGE OF MATERIAL, EQUIPMENT AND WASTE TRAILER/DUMPSTER SHALL BE COORDINATED WITH AND APPROVED BY THE OWNER'S REPRESENTATIVE.
- DUMPSTER LOCATION MUST BE APPROVED BY V.A.M.C. PRIOR TO BEING BROUGHT ON SITE.

LEGEND

- AC ASBESTOS-CONTAINING  
ACM ASBESTOS-CONTAINING MATERIAL  
LF LINEAR FEET  
SF SQUARE FEET
- FT REMOVE ASBESTOS-CONTAINING FLOOR TILE AND DISPOSE OF AS ACM.  
FTM REMOVE ASBESTOS-CONTAINING FLOOR TILE MASTIC AND DISPOSE OF AS ACM.  
PI REMOVE ASBESTOS-CONTAINING PIPE INSULATION AND DISPOSE OF AS ACM.  
RBM REMOVE ASSUMED ASBESTOS-CONTAINING RADIATOR BOX MASTIC AND DISPOSE OF AS ACM.  
SI REMOVE ASBESTOS-CONTAINING SINK INSULATION AND DISPOSE OF AS ACM.

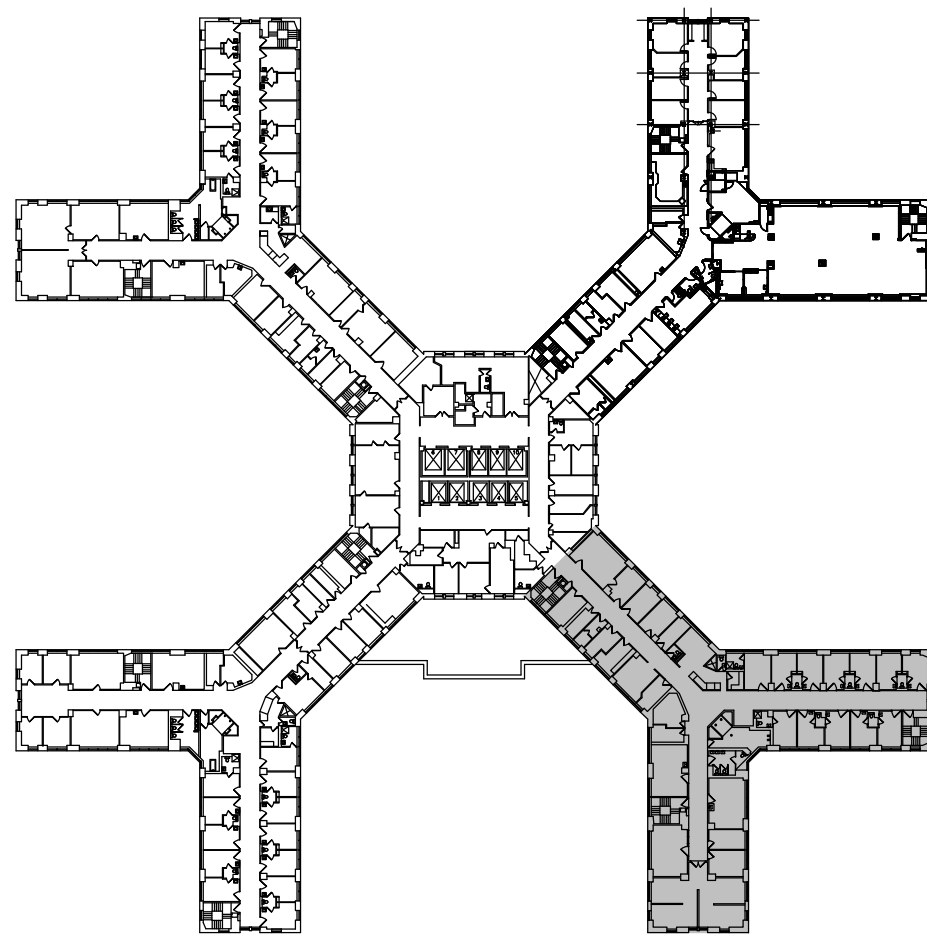
APPROXIMATE QUANTITIES

- FT 2,100 SF  
FTM 2,715 SF  
PI 300 LF  
RBM 96 SF  
SI 10 SF

SPECIFIC NOTES

- 1 WORK SHALL BE COMPLETED IN CONJUNCTION WITH PHASE 1. SEE DWG. 11-102-A003  
2 WORK SHALL BE COMPLETED IN CONJUNCTION WITH PHASE 2. SEE DWG. 11-102-A003  
3 WORK SHALL BE COMPLETED IN CONJUNCTION WITH PHASE 3. SEE DWG. 11-102-A003  
4 REMOVE ASBESTOS PIPE WRAP WITHIN CHASE. COORDINATE WITH PLUMBING CONTRACTOR. WORK SHALL BE COMPLETED IN CONJUNCTION WITH CORRECT PHASE. SEE DWG. 11-102-A003.

100% SUBMISSION



Key Plan  
N.T.S.

Seventh Floor Plan - Hazardous Materials Removals  
1/4" = 1'-0"

1.

<div><div></div><div>VA WESTERN NEW YORK HEALTHCARE SYSTEM 3495 BAILEY AVENUE BUFFALO, NEW YORK 14215</div></div>		<div><div>FONTANESE FOLTS AUBRECHT ERNST ARCHITECTS</div><div>P: (716) 862-2200 F: (716) 862-0072 6395 W. QUAKER STREET ORCHARD PARK, NY 14127 Architect</div></div>	<div><div>MECHANICAL/ELECTRICAL ENGINEERS: IBC Engineering, P.C. 2495 Main Street, Suite 318 Buffalo, NY 14214 (716) 836-2315 FAX: (716) 836-2315</div><div>COST CONSULTANTS: BAER AND ASSOCIATES 2495 Main Street Suite 470 Buffalo, NY 14214 (716) 831-0000 FAX: (716) 831-0001 Sub Consultants</div></div>	<div><div>ENVIRONMENTAL ENGINEERS: FISHER ASSOCIATES 325 Delaware Ave Suite 200 Buffalo, NY 14202 (716) 858-1234 FAX: (716) 858-1231</div><div>Engineer's Stamp</div></div>	<div><div>CARDIOLOGY MANAGER</div><div>DATE</div></div> <div><div>INFECTION CONTROL</div><div>DATE</div></div> <div><div>SAFETY OFFICER</div><div>DATE</div></div> <div><div>ENGINEERING MANAGER</div><div>DATE</div></div> <div><div>CARELINE MANAGER</div><div>DATE</div></div> <div><div>CHIEF OF STAFF</div><div>DATE</div></div>	<div>Drawing Title SEVENTH FLOOR PLAN HAZARDOUS MATERIALS REMOVALS</div> <div>Medical Center Director Associate Medical Center Director</div>	<div>Project Title REMODEL WARD 7A - INFUSION CENTER</div> <div>Building Number Checked Drawn Location V.A.M.C. BUFFALO, NEW YORK</div>	<div>Date OCTOBER 22, 2012</div> <div>Station No. 528</div> <div>11-102-HA102</div>	<div>Office of Facilities</div> <div>Department of Veterans Affairs</div>
---	--	--	---	---	---	---	---	---	---