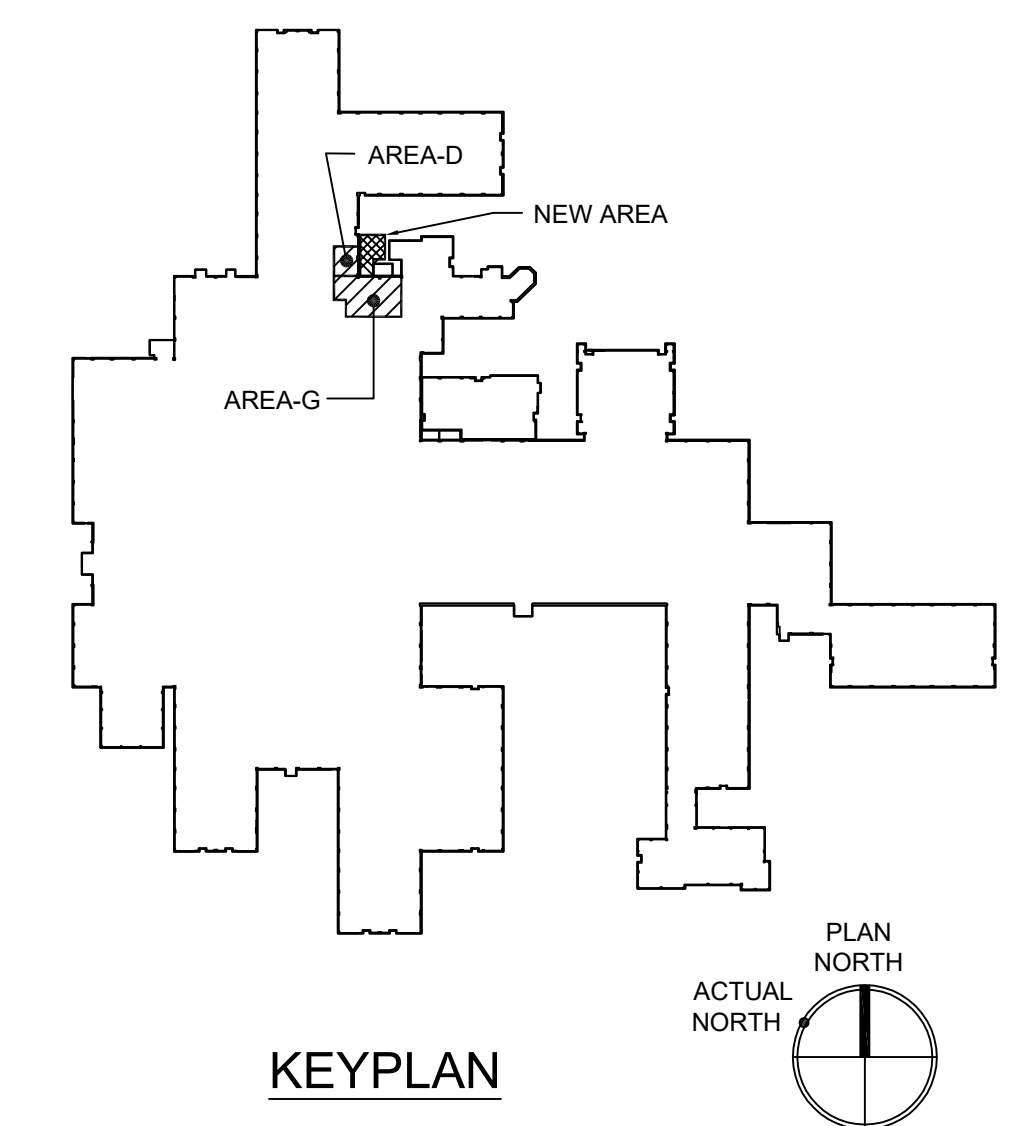




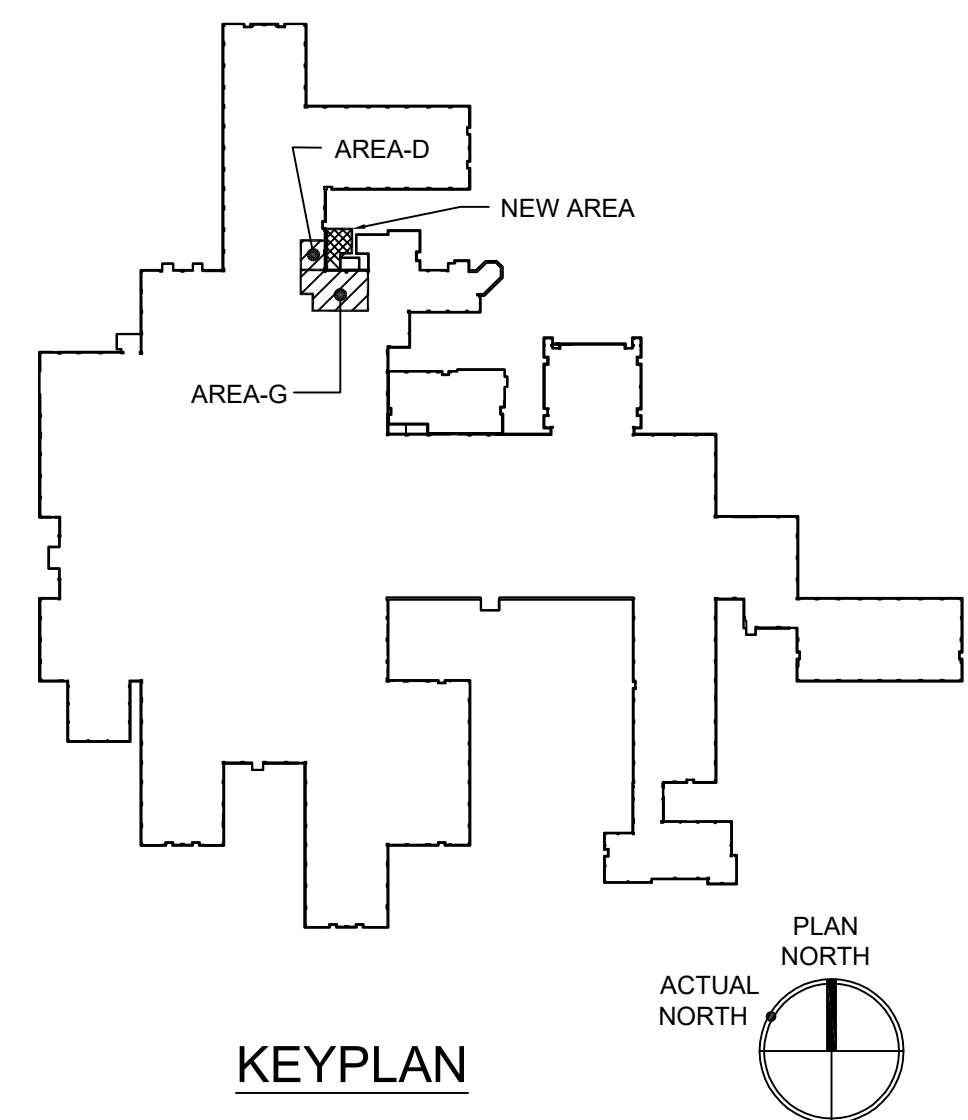
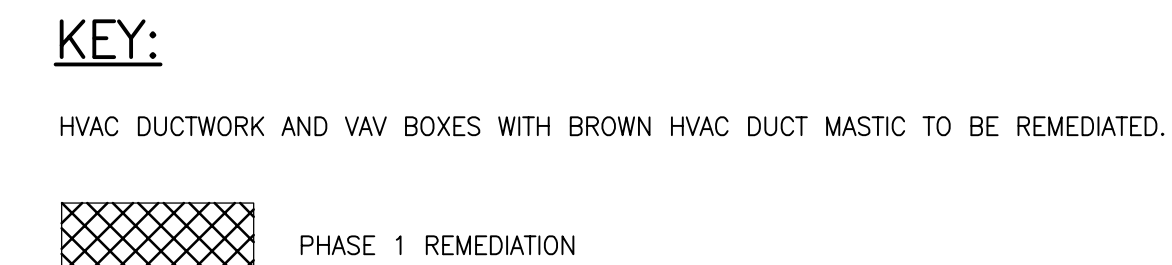
GENERAL SHEET NOTES:

KEY – ASBESTOS MATERIALS:



1 ASBESTOS ABATEMENT LOCATION PLAN – LEVEL 1
SCALE: 3/16" = 1'-0"

PRINTS OF THIS DRAWING SHALL NOT BE USED FOR ANY PURPOSE WHATSOEVER WITHOUT THE SEAL AND SIGNATURE OF THE PROFESSIONAL ENGINEER.			<div>CONSULTANT</div> <div><div><div>PF&A</div><div>PF&A DESIGN ARCHITECTURE, PLANNING, INTERIORS World Trade Center 101 West Main Street, Suite 7000 Norfolk, VA 23510 Phone: 757-471-0537 Fax: 757-471-4205 www.pfa-architect.com</div></div></div>			<div>ENGINEER OF RECORD</div> <div><div><div><div></div><div>Miller-Remick LLC M.E.P. & Structural Engineering A Service Disabled Veteran Owned Small Business</div><div>1010 KINGS HIGHWAY SOUTH CHERRY HILL, NEW JERSEY 08034 PHONE: (856)429-4000 FAX: (856)429-5002 MR PROJECT NO: 0500-0019</div></div><div><div>SEAL</div><div>ENGINEER</div></div></div></div>			<div>MILLER-REMICK LLC PROFESSIONAL ENGINEER</div>			<div>Office of Construction and Facilities Management</div> <div>VA U.S. Department of Veterans Affairs</div>			Drawing Title			Phase			Project Title			Project Number		
ASBESTOS ABATEMENT LOCATION PLAN LEVEL 1															BID DOCUMENTS			CONSTRUCT NEW EP LAB			652-CSI-203					
Approved: Project Director															FULLY SPRINKLERED			Location HUNTER HOLMES MCGUIRE VAMC RICHMOND, VA			Building Number 500					
																		Issue Date			Drawing Number					
																		2019-12-17			HA101					
																		Checked			TH					
																		Drawn			ARF					
NO. DESCRIPTION DATE																										



Drawing Number

HA101.i