

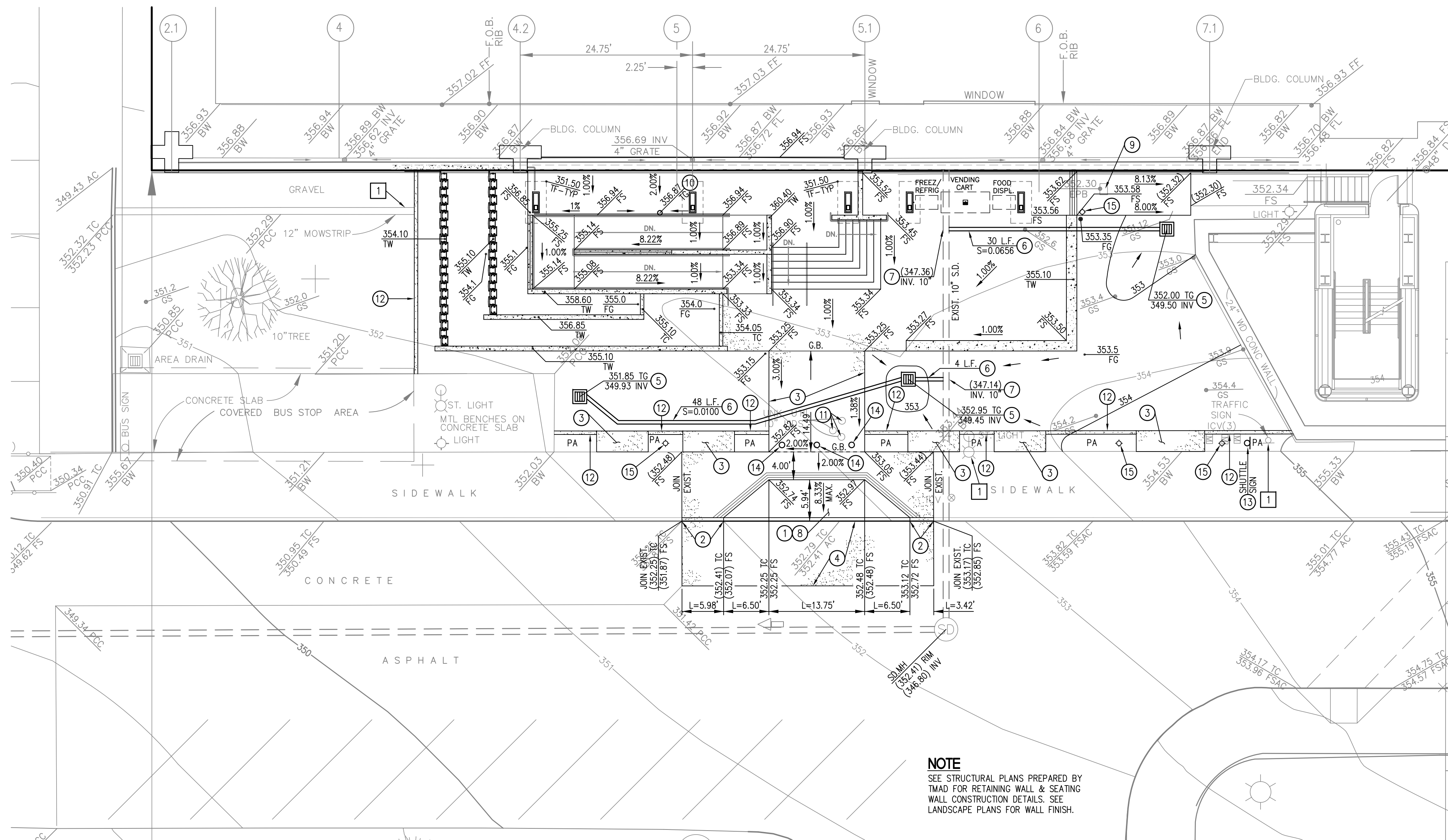
DEMOLITION PLAN

DEMOLITION NOTES

1. PROTECT IN PLACE.
2. SAWCUT EXISTING PCC/AC PAVEMENT.
3. REMOVE EXIST. PCC SIDEWALK.
4. REMOVE EXIST. AC PAVEMENT AND BASE.
5. REMOVE EXIST. PCC CURB ONLY.
6. REMOVE EXIST. 12" WIDE PCC MOW STRIP.
7. REMOVE EXIST. "BLUESTAR MEMORIAL". SEE LANDSCAPE PLANS FOR DISPOSITION.
8. REMOVE EXIST. CONCRETE LIGHT BOLLARD.
9. REMOVE EXIST. TREE, SIZE PER PLAN.
10. REMOVE EXIST. YUCCA PLANT.
11. REMOVE EXIST. PIPE HANDRAIL.
12. REMOVE EXIST. NEWSPAPER RACKS.
13. REMOVE EXISTING BENCH.
14. REMOVE EXISTING TRAFFIC SIGN, SAVE FOR RELOCATION.
15. RELOCATE EXISTING 14" PINE TREE. SEE LANDSCAPE PLANS FOR LOCATION.

LEGEND

- AC ASPHALT  
BW BACK OF WALK  
DIA DIAMETER  
E ELECTRICAL  
FF FINISHED FLOOR  
FG FINISHED GRADE  
FL FLOW LINE  
F.O.B. FACE OF BUILDING  
FS FINISHED SURFACE  
GS GROUND SHOT  
ICV IRRIGATION CONTROL VALVE  
INV INVERT  
MH MANHOLE  
PB PULL BOX  
PCC CONCRETE  
SD STORM DRAIN  
ST STREET  
TC TOP OF CURB  
UNK. UNKNOWN



GRADING PLAN

CONSTRUCTION NOTES



1. PROTECT IN PLACE.
2. CONSTRUCT PCC ACCESS RAMP.
3. CONSTRUCT PCC CURB ONLY, HT. VARIES, 5" MAX.
4. CONSTRUCT 5" THICK PCC SIDEWALK W/ #3 BARS @ 18" EACH WAY.
5. CONSTRUCT 8" THICK JOINTED PLAIN CONCRETE PAVING OVER 12" A.B.
6. INSTALL 12"x12" AREA DRAIN, JENSEN PRECAST 1212-HOT OR APPROVED EQUAL.
7. INSTALL 6" PVC SDR 35 DRAIN PIPE.
8. CONNECT TO EXIST. 10" STORM DRAIN.
9. INSTALL TRUNCATED DOME TACTILE WARNING STRIP.
10. ADJUST ELECTRICAL PULL BOX TO GRADE.
11. ADJUST EXISTING UTILITY COVERS TO GRADE.
12. CONSTRUCT PCC MOW CURB, SEE LANDSCAPE PLANS FOR DETAILS.
13. REINSTALL TRAFFIC SIGN.
14. INSTALL LIGHTED BOLLARD, SEE LANDSCAPE PLANS FOR DETAILS.
15. INSTALL LIGHTED BOLLARD, SEE LANDSCAPE PLANS FOR DETAILS.

LEGEND

- AC ASPHALT  
BW BACK OF WALK  
DIA DIAMETER  
E ELECTRICAL  
FF FINISHED FLOOR  
FG FINISHED GRADE  
FL FLOW LINE  
F.O.B. FACE OF BUILDING  
FS FINISHED SURFACE  
GS GROUND SHOT  
ICV IRRIGATION CONTROL VALVE  
INV INVERT  
L.F. LINEAR FEET  
MH MANHOLE  
PA PLANTER AREA  
PB PULL BOX  
PCC CONCRETE  
SD STORM DRAIN  
ST STREET  
TC TOP OF CURB  
TF TOP OF FOOTING  
TG TOP OF GRADE  
TW TOP OF WALL  
TYP TYPICAL  
UNK. UNKNOWN

100% CONSTRUCTION DOCUMENT SUBMITTAL

Renovate Dental to Ambulatory Care (Phase 2)

 <b>HALLADAY &amp; MIM MACK</b> Incorporated 9045 HAVEN AVENUE, SUITE 109 RANCHO CUCAMONGA, CA 91730 909-989-4245 PHONE 909-989-4303 FAX		<b>BUILDING NO. 1</b>  Department of Veterans Affairs 3350 LaJolla Village Dr. San Diego, California 92161		 <b>VA San Diego Healthcare System</b> Desert Pacific Healthcare Network	
USING SERVICE:		DATE: JUNE 15, 2012		CHECKED: JJB	
FACILITIES MGMT:		DRAWN: JME		SCALE: AS NOTED	
CHIEF OF STAFF:		DRAWING No. SD-2313		SHEET NO. 1 OF 1	
CHIEF OF OPERATIONS:		C-101		PROJ. No. 664-12-118	
DIRECTOR:					

*Dana S. Halladay* R.C.E. 34751  
DANA S. HALLADAY EXP. 9-30-13

REGISTERED PROFESSIONAL ENGINEER  
DANA S. HALLADAY  
No. 34751  
8-30-13  
CIVIL  
STATE OF CALIFORNIA