

three inches = one foot

one and one-half inches = one foot

one inch = one foot

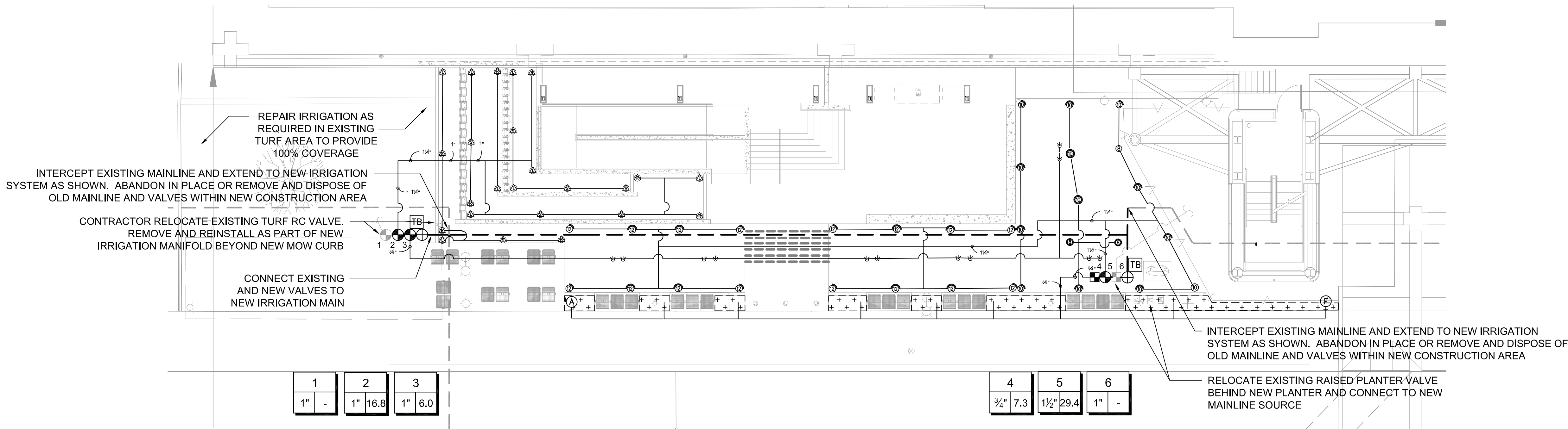
three-quarters inch = one foot

one-half inch = one foot

three-eighths inch = one foot

one-quarter inch = one foot

one-eighth inch = one foot



IRRIGATION NOTES:

1. THE IRRIGATION SYSTEM IS SHOWN DIAGRAMMATIC ALLY FOR CLARITY. LOCATE ALL PIPING, VALVES, BACKFLOW PREVENTERS, AND OTHER IRRIGATION EQUIPMENT WITHIN PLANTING AREAS UNLESS NOTED OR DIRECTED OTHERWISE. LOCATE ALL VALVES AND VALVE BOXES SIX INCHES FROM EDGE OF PAVING OR CURB.
2. THE CONTRACTOR SHALL REVIEW IRRIGATION SPECIFICATIONS BEFORE BEGINNING WORK.
3. CONTRACTOR SHALL REVIEW PLANTING INSTALLATION DETAILS PRIOR TO BEGINNING WORK.
4. EXISTING UTILITIES AND FIELD CONDITIONS, PRIOR TO EXCAVATION, LOCATE ALL CABLES, CONDUITS, AND UNDERGROUND UTILITIES. CONTRACTOR SHALL BE RESPONSIBLE FOR AN UNDERGROUND UTILITY SERVICE TO LOCATE AND MARK UTILITIES. CONTRACTOR WILL TAKE PROPER PRECAUTIONS NOT TO DAMAGE OR DISTURB SUCH UNDERGROUND IMPROVEMENTS. NOTIFY THE RESIDENT ENGINEER IMMEDIATELY IF A CONFLICT EXISTS BETWEEN SUCH OBSTACLES AND THE PROPOSED WORK. PROCEED IN SAME MANNER IF ROCK LAYERS OR ANY OTHER CONDITIONS ENCOUNTERED UNDERGROUND MAKE CHANGES ADVISABLE.
5. ALL PIPING AND WIRING UNDER ROADWAYS AND PAVING AND THROUGH WALLS SHALL BE SLEEVED.
6. USE TWO WRAPS OF THREE-QUARTER INCH (3/4") TEFLON TAPE FOR ALL THREADED CONNECTIONS.
7. AUTOMATIC IRRIGATION CONTROLLER IS TO BE SUPPLIED AND INSTALLED BY THE CONTRACTOR. THE CONTRACTOR SHALL BE RESPONSIBLE FOR CONNECTION OF FIELD WIRES TO APPROPRIATE TERMINAL STRIPS.
8. ADJUST ALL SPRINKLERS TO AVOID OVERSPRAY ONTO WALLS, WALKS, STREETS, UTILITY BOXES, BUILDINGS AND OTHER IMPROVEMENTS.
9. ALL SPRINKLER HEADS SHALL BE SET PERPENDICULAR TO THE FINISH GRADE OF THE AREA TO BE IRRIGATED UNLESS OTHERWISE DESIGNED ON THE PLANS.
10. CONTRACTOR SHALL INSTALL IN-LINE ANTI-DRAIN VALVES AS WARRANTED BY SITE CONDITIONS TO ALLEVIATE LOW HEAD DRAINAGE.
11. THE CONTRACTOR SHALL NOT WILLFULLY INSTALL THE SPRINKLER SYSTEM AS SHOWN ON THE DRAWINGS WHEN IT IS OBVIOUS IN THE FIELD THAT OBSTRUCTIONS, GRADE DIFFERENCES OR DIFFERENCES IN THE AREA DIMENSIONS, SUCH OBSTRUCTIONS OR DIFFERENCES SHALL BE BROUGHT TO THE ATTENTION OF THE RESIDENT ENGINEER. IN THE EVENT THIS NOTIFICATION IS NOT PERFORMED, THE CONTRACTOR SHALL BE RESPONSIBLE FOR ANY REVISIONS NECESSARY.
12. THE CONTRACTOR SHALL KEEP AN UP-TO-DATE COMPLETE "AS-BUILT" RECORD SET OF PRINTS WHICH SHALL BE UPDATED DAILY AND SHOW EVERY CHANGE FROM THE ORIGINAL DESIGN.
13. INSTALL IRRIGATION HEADS IN TURF AREAS 6" FROM WALKS AND HARDSCAPE AREAS.
14. ALL CONTROL VALVES SHALL BE MANIFOLDED AND GROUPED IN ONE AREA SHOWN ON PLAN. VALVES SHALL BE SET AT RIGHT ANGLES TO EDGES. INSTALL VALVES BOXES 6" FROM EDGES OF HARDSCAPE AREAS.
15. CONTRACTOR SHALL REMOVE AND DISCARD DAILY, ALL PIPING DISTURBED DURING TRENCHING OPERATION.
16. CONTRACTOR SHALL REVIEW IRRIGATION SPECIFICATIONS PRIOR TO BEGINNING WORK. REFER TO TECHNICAL SPECIFICATIONS AND CONSTRUCTION DETAILS FOR INSTALLATION PROCEDURES.
17. PROVIDE CONCRETE THRUST BLOCKS ON ALL MAINLINES, PER DETAIL AND SPECIFICATIONS. THE RESIDENT ENGINEER SHALL BE NOTIFIED 48 HOURS (2 WORKING DAYS) PRIOR TO THE START OF CONSTRUCTION. ALL WORK PERFORMED WITHOUT BENEFIT OF INSPECTION SHALL BE SUBJECT TO REJECTION AND REMOVAL.
18. CONTROLLERS, FLOW SENSOR, MATER VALVE SHALL BE TESTED AND WRITTEN CERTIFICATION PROVIDED BY MANUFACTURE'S REPRESENTATIVE.
19. IN ALL AREAS UNAFFECTED BY NEW GRADING, EXISTING IRRIGATION HEADS AND LINES ARE TO BE PROTECTED IN PLACE. CONTRACTOR TO REPLACE, RELOCATE AND/OR ADJUST IRRIGATION EQUIPMENT FOR ALL EXISTING IRRIGATION SYSTEMS THAT ARE DISTURBED DURING CONSTRUCTION IN ORDER TO PROVIDE HEAD TO HEAD COVERAGE WITH NO OVERSPRAY ON HARDSCAPE OR WALLS.
20. INSTALL NEW VALVES TO REPLACE VALVES DISTURBED DURING CONSTRUCTION (TYPE PER LEGEND, SIZE TO ACCOMMODATE HEADS PER MANUFACTURER'S SPECIFICATIONS). CONTRACTOR SHALL ENSURE THAT SYSTEM IS FULLY OPERATIONAL AND PROVIDES FULL COVERAGE.
21. LOCATION OF EXISTING MAINLINE TO BE PROTECTED IN PLACE UNLESS OTHERWISE NOTED ON THESE PLANS. CONTRACTOR SHALL FIELD VERIFY LOCATION PRIOR TO INSTALLATION. CONNECTIONS TO NEW MAINLINE TO EXISTING MAINLINE, SIZE TO MATCH EXISTING MAINLINE UNLESS NOTED.
22. WERE VERTICAL OBSTRUCTIONS IN THE LANDSCAPE AREA (SUCH AS LIGHT POLES) INTERFERE WITH THE SPRAY PATTERN, CONTRACTOR SHALL MAKE NECESSARY ADJUSTMENTS IN THE FILED. THIS MAY REQUIRE THE ADDITION OF QUARTER CIRCLE TO EACH SIDE OF THE OBSTRUCTION.

IRRIGATION LEGEND

SYMBOL	MANUFACTURER/MODEL/DESCRIPTION	PSI	DETAIL
	Rain Bird 1806-SAM-PRS 15 Strip Series 6" popup with check valve, pressure regulator.	30	5/L1-1.0
	Rain Bird 1806-SAM-PRS 8 Series MPR 6" popup with check valve, pressure regulator.	30	5/L1-1.0
	Rain Bird 1806-SAM-PRS 10 Series MPR 6" popup with check valve, pressure regulator.	30	5/L1-1.0
	Rain Bird 1806-SAM-PRS 12 Series MPR 6" popup with check valve, pressure regulator.	30	5/L1-1.0
	Rain Bird 1806-SAM-PRS ADJ 6" popup with check valve, pressure regulator.	30	5/L1-1.0
	Rain Bird RWS-B-C-SOCK Root Watering System with 4" diameter x 36" long with locking grate, check valve, semi-IDP mesh tube with sand sock and Rain Bird 1402 0.5gpm and 1404 1.0gpm.	30	2/L1-1.0
SYMBOL	MANUFACTURER/MODEL/DESCRIPTION	PSI	DETAIL
	TBOSS-1, 2, 4 or 6" Photo voltaic operated automatic irrigation controller. One unit per irrigation manifold.	-	
	Rain Bird FESB-HAN Electric Remote Control Scrubber Valve		1/L1-1.0
	Spears 2122 Line size ball valve		10/L1-1.0
	Rain Bird XCZ-075-PRF Drip Control Kit, 3/4" Low Flow valve, 3/4" pressure regulating RBY filter and 30psi pressure regulator.		7/L1-1.0
	Rain Bird MDGFCAP Dripline Flush Valve cap in compression fitting coupler.		9/L1-1.0
	Rain Bird AR Valve Kit 1" Air Relief Valve kit with 6" drip valve box.		8/L1-1.0
	Area to Receive Drip Emitters Saco POCOT Saco Single Outlet Drip Emitter, 1/2" FIPT, self-cleaning, dark brown=0.5gph, gray=1.0gph, dark green=2.0gph.		3/L1-1.0
	Irrigation Lateral Line: Blu-Line and PVC Class 200		6/L1-1.0
	Irrigation Mainline: PVC Schedule 40		6/L1-1.0
	Pipe Sleeve: PVC Schedule 40 Typical pipe sleeves for irrigation pipes. Pipe sleeve size shall allow for irrigation piping and their related couplings to easily slide through sleeving material. Extend sleeves 18 inches beyond edges of paving or construction.		6/L1-1.0
Valve Callout			
	Valve Number		
	Valve Flow		
	Valve Size		

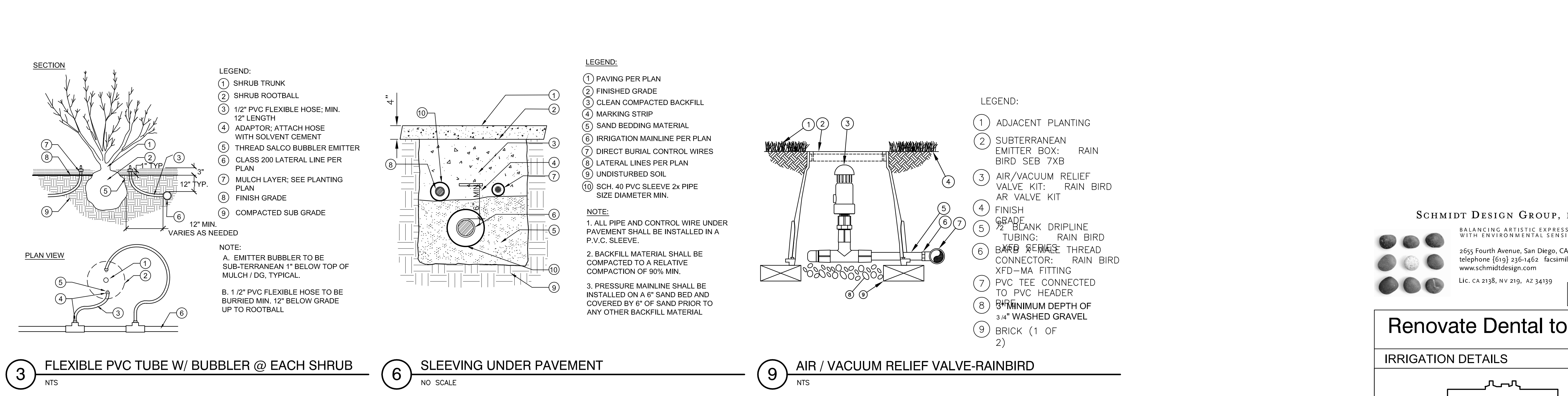
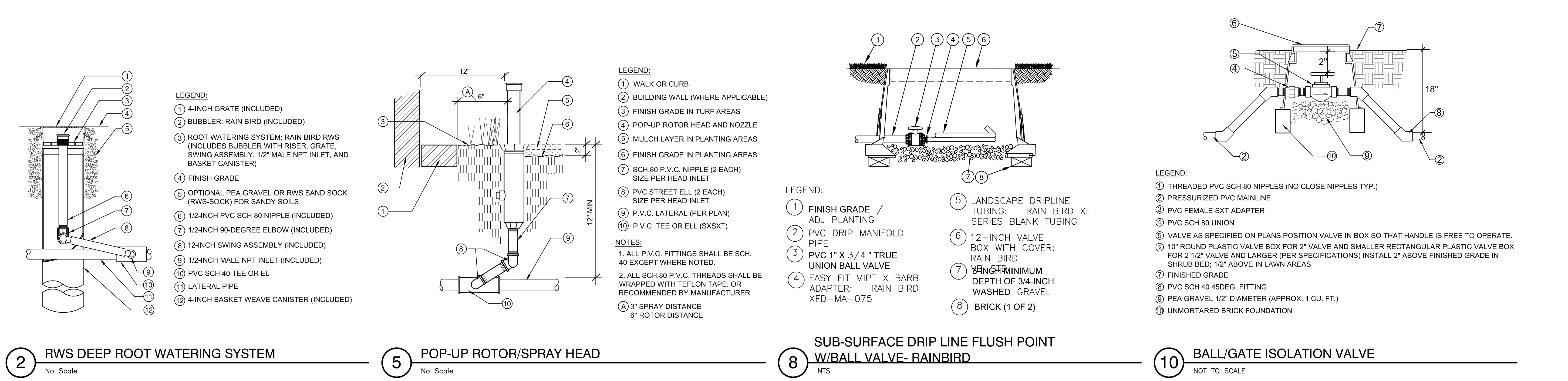
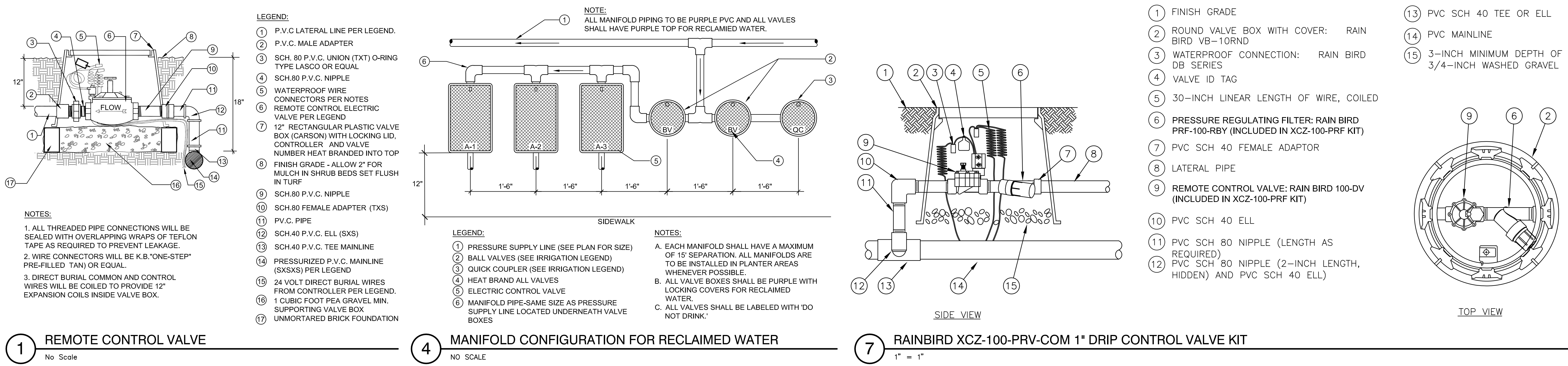
SCHMIDT DESIGN GROUP, INC.
BALANCING ARTISTIC EXPRESSION IN DESIGN
WITH ENVIRONMENTAL SENSITIVITY
2655 Fourth Avenue, San Diego, CA 92103
telephone (619) 236-1462 facsimile (619) 236-8792
www.schmidt-design.com
Lic. CA 2138, NV 219, AZ 34139

SDG PROJ NO: 11402
PLT DATE: 02/28/11
DRAWN BY: AS
CHECKED BY: JJ

Renovate Dental to Ambulatory Care (PHASE 2)

IRRIGATION PLAN	BUILDING NO. 1
	<p>Department of Veterans Affairs 3350 LaJolla Village Dr. San Diego, California 92161</p> <p>VA San Diego Healthcare System <i>Desert Pacific Healthcare Network</i></p>
USING SERVICE:	DATE: JUNE 15, 2012
FACILITIES MGMT:	CHECKED: J.J.
CHIEF OF STAFF:	DRAWN: A.S.
CHIEF OF OPERATIONS:	SCALE: AS NOTED
DIRECTOR:	DRAWING No. SD-2313
	LI-1.0
	SHEET NO. OF
	PROJ. No. 664-12-118

100% CONSTRUCTION DOCUMENTS SUBMITTAL



SCHMIDT DESIGN GROUP, INC.
BALANCING ARTISTIC EXPRESSION IN DESIGN
WITH ENVIRONMENTAL SENSITIVITY
2655 Fourth Avenue, San Diego, CA 92103
telephone (619) 236-1462 facsimile (619) 236-8792
www.schmidtsg.com
Lic. CA 2138, NV 219, AZ 34139

SEC. PROJ. NO. 11-402
PLT. DATE 10/28/11
DRAWN BY: AS
CHECKED BY: JJ

architecture and construction services

gkkworks

Project #40086

1775 Hancock Street, Suite 150, San Diego, CA 92110
619 398 0215 • 619 814 1249 fax

Renovate Dental to Ambulatory Care (PHASE 2)

IRRIGATION DETAILS

BUILDING NO. 1

Department of Veterans Affairs
3350 LaJolla Village Dr.
San Diego, California 92161

VA San Diego Healthcare System
Desert Pacific Healthcare Network

USING SERVICE:	DATE: JUNE 15, 2012
FACILITIES MGMT:	CHECKED: J.J.
CHIEF OF STAFF:	DRAWN: A.S.
CHIEF OF OPERATIONS:	SCALE: AS NOTED
DIRECTOR:	DRAWING No. SD-2313
	LI-1.1
	SHEET NO. OF
	PROJ. No. 664-12-118

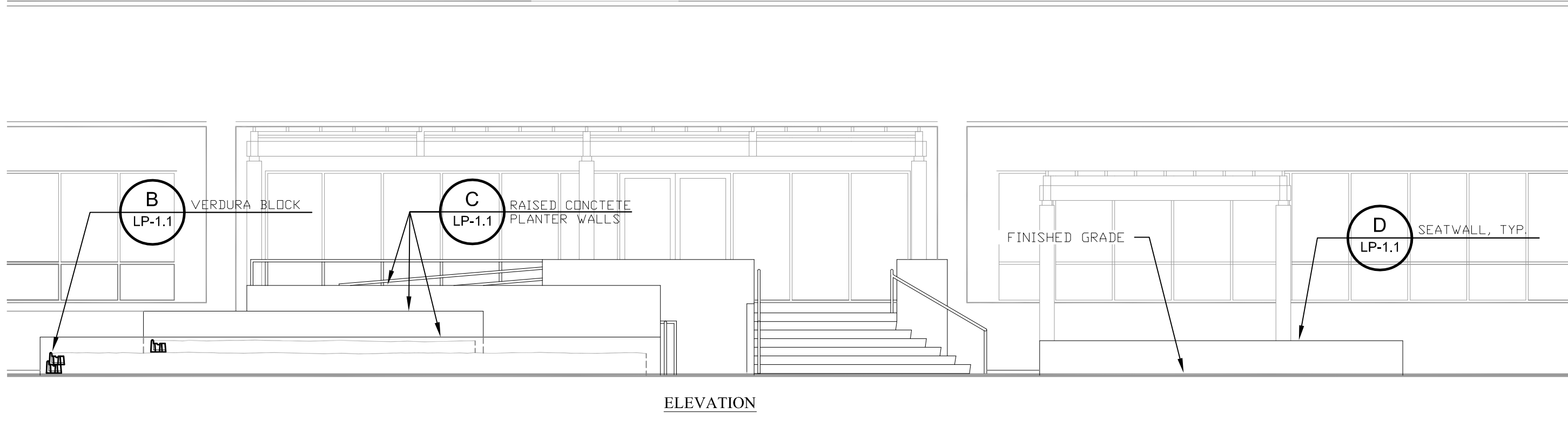
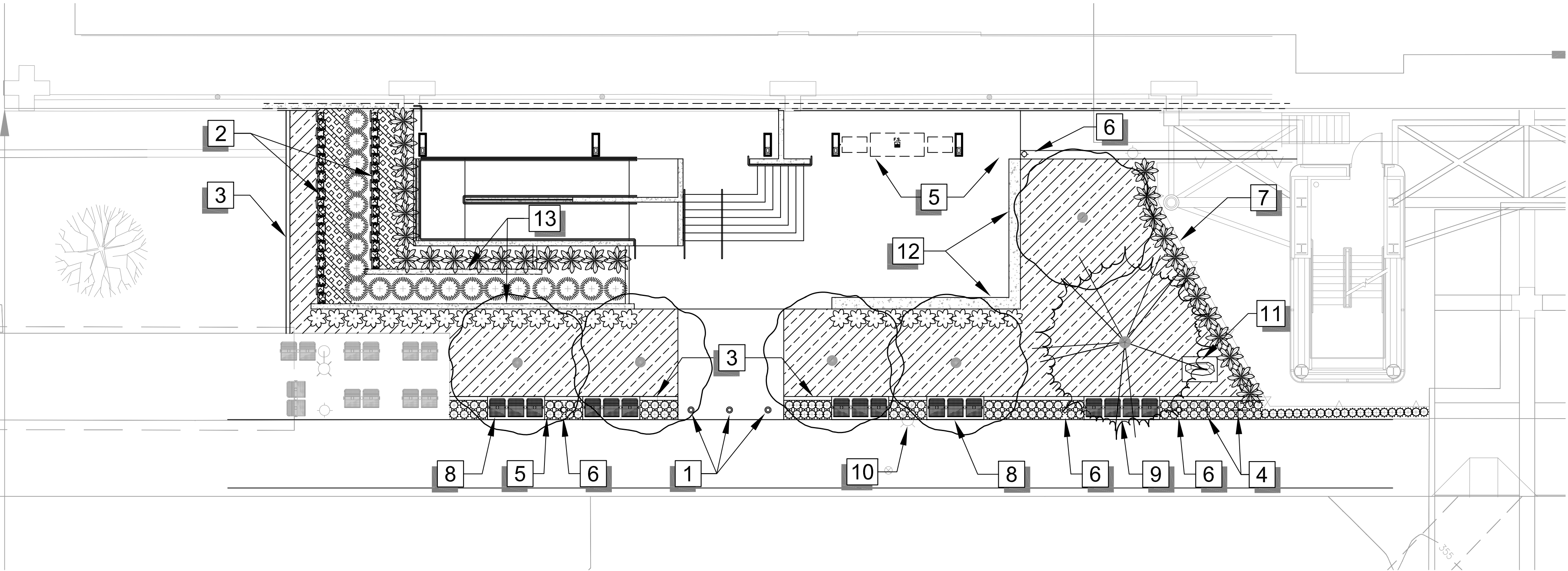
three inches = one foot
one and one-half inches = one foot
one inch = one foot
three-quarters inch = one foot
one-half inch = one foot
three-eighths inch = one foot
one-quarter inch = one foot
one-eighth inch = one foot

100% CONSTRUCTION DOCUMENTS SUBMITTAL

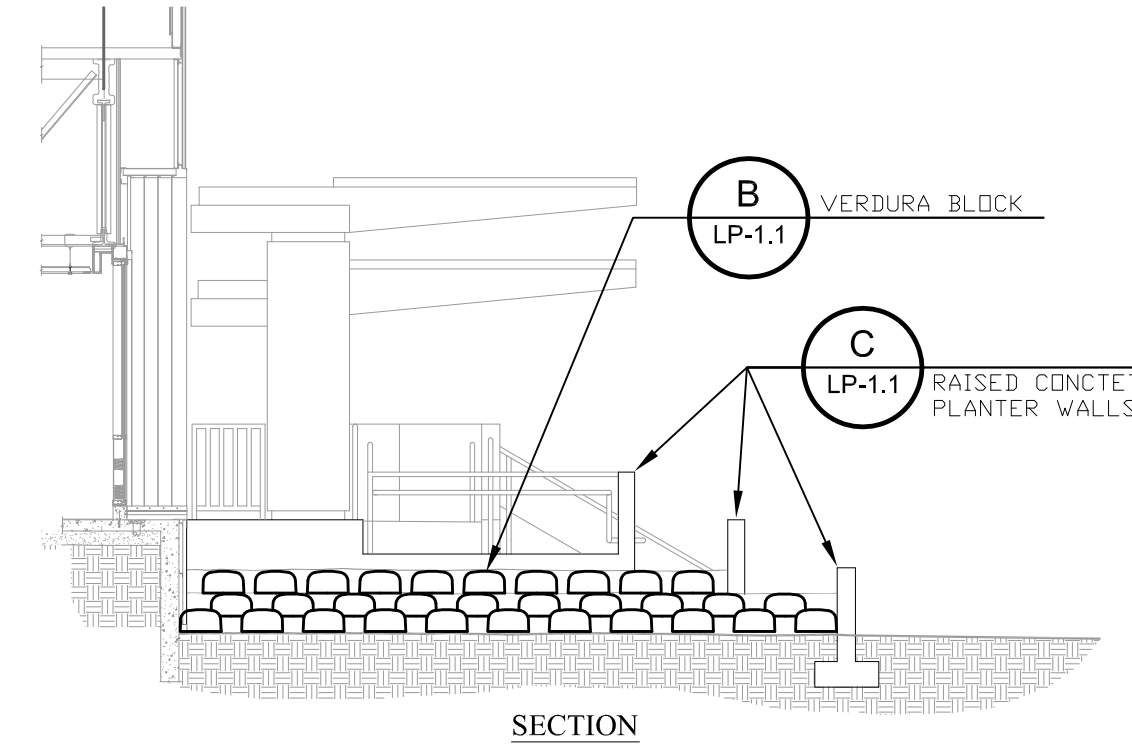
three inches = one foot
one and one-half inches = one foot
one inch = one foot
three-quarters inch = one foot
one-half inch = one foot
three-eighths inch = one foot
one-quarter inch = one foot
one-eighth inch = one foot

PLANTING NOTES:

1. CONTRACTOR SHALL REVIEW PLANTING SPECIFICATIONS BEFORE BEGINNING WORK.
2. CONTRACTOR SHALL REVIEW PLANTING INSTALLATION DETAILS PRIOR TO BEGINNING WORK.
3. CONTRACTOR SHALL VISIT SITE AND BECOME FAMILIAR WITH CONDITIONS UNDER WHICH WORK SHALL BE DONE PRIOR TO BIDDING.
4. ALL WORK WILL BE IN ACCORDANCE WITH THE REQUIREMENTS OF THE CITY OF SAN DIEGO AND THE TECHNICAL SPECIFICATIONS FOR THE PROJECT.
5. CONTRACTOR SHALL NOTIFY RESIDENT ENGINEER OF ANY DISCREPANCIES IN THE EXISTING CONDITIONS OR WITHIN THE PLANS PRIOR TO BEGINNING WORK.
6. FINISHED GRADES SHALL BE SMOOTHED TO ELIMINATE PUDDLING OR STANDING WATER. CONTRACTOR SHALL MAINTAIN A MINIMUM 2% DRAINAGE AWAY FROM BUILDINGS AND PAVING INTO DRAINAGE STRUCTURES OR TO STREET (SEE ENGINEER'S GRADING AND DRAINAGE PLAN). CONTRACTOR SHALL NOTIFY RESIDENT ENGINEER IMMEDIATELY OF ANY CONFLICTS IN MAINTAINING DRAINAGE.
7. RESIDENT ENGINEER SHALL APPROVE ALL FINISH GRADING PRIOR TO PLACEMENT OF ANY PLANT MATERIAL.
8. WHEN SHRUB AND GROUND COVER MASS QUANTITIES ARE SHOWN ON PLANS UNDERPLANT ALL TREES WITH THE ADJACENT SHRUB AND/OR GROUND COVER AS INDICATED BY THE PLANS. PLANTS SHALL BE INSTALLED WITH TRIANGULAR SPACING. PLANT GROUND COVERS TO WITHIN 12" OF TREE OR SHRUB STEMS.
9. THE CONTRACTOR SHALL BE HELD RESPONSIBLE FOR ANY REPAIRS MADE NECESSARY THROUGH THE ACTIONS OR NEGLIGENCE OF HIS CREW.
10. THE FOLLOWING SOIL AMENDMENTS ARE PER RECOMMENDATION FROM WALLACE LABORATORIES, LCC. (DATED 10/25/10) AND ARE PROVIDED FOR REFERENCE FOR BID PURPOSES ONLY. ACTUAL AMENDMENTS SHALL BE PER SOIL TESTS TAKEN AFTER ROUGH GRADING. TESTS SHALL INCLUDE TESTS FOR SOIL FERTILITY, AGRICULTURAL SUITABILITY, ORGANIC CONTENT, N, P, K, PH, EC, SOIL TEXTURE, AND RECOMMENDATIONS FOR AMENDMENTS, LEACHING, AND MAINTENANCE FERTILIZATION. CONTRACTOR SHALL FURNISH THE LANDSCAPE ARCHITECT WITH A COPY OF TEST RESULTS AND RECEIVE WRITTEN APPROVAL FOR AMENDMENTS/SOIL PREPARATION PRIOR TO INSTALLATION. GENERAL SOIL PREPARATION ON A SQUARE FOOT BASIS: BROADCAST THE FOLLOWING MATERIALS UNIFORMLY. THE RATES ARE PER 1,000 SF. INCORPORATE THEM HOMOGENEOUSLY 6 INCHES DEEP; REMOVE ROCK OVER 1-INCH IN DIAMETER FROM THE TOP 6-INCHES.
 - 4 LBS. TRIPLE SUPERPHOSPHATE (0-45-0)
 - 40 LBS. AGRICULTURAL GYPSUM FOR SITE ONE; 80 LBS. AGRICULTURAL GYPSUM FOR SITES TWO AND THREE. SEE EXHIBIT A, SHEET LP-1.1.
 - 10 LBS. POTASSIUM SULFATE (0-0-50)
 - ORGANIC SOIL AMENDMENT: 3 CUBIC YARDS, SUFFICIENT FOR 3% TO 4% SOIL ORGANIC MATTER ON A DRY WEIGHT BASIS.ORGANIC SOIL AMENDMENT PER WALLACE LABORATORIES, LCC:
 - A. HUMUS MATERIAL SHALL HAVE AN ACID-SOLUBLE ASH CONTENT OF NO LESS THAN 6% AND NO MORE THAN 20%. ORGANIC MATTER SHALL BE A LEAST 50% ON A DRY WEIGHT BASIS.
 - B. THE PH OF THE MATERIAL SHALL BE BETWEEN 6 AND 7.5.
 - C. THE SALT CONTENT SHALL BE LESS THAN 10 MILLIMO/CM @ 25° C. ON A SATURATED PASTE EXTRACT.
 - D. BORON CONTENT OF THE SATURATED EXTRACT SHALL BE LESS THAN 1.0 PART PER MILLION.
 - E. SILICON CONTENT (ACID-INSOLUBLE ASH) SHALL BE LESS THAN 50%.
 - F. CALCIUM CARBONATE SHALL NOT BE PRESENT IF TO BE APPLIED ON ALKALINE SOILS.
 - G. TYPES OF ACCEPTABLE PRODUCTS ARE COMPOSTS, MANURES, MUSHROOM COMPOSTS, STRAW, ALFALFA, PEAT MOSSES ETC. LOW IN SALTS, LOW IN HEAVY METALS, FREE FROM WEED SEEDS, FREE OF PATHOGENS AND OTHER DELETERIOUS MATERIALS.
 - H. COMPOSTED WOOD PRODUCTS ARE CONDITIONALLY ACCEPTABLE (STABLE HUMUS MUST BE PRESENT). WOOD BASED PRODUCTS ARE NOT ACCEPTABLE WHICH ARE BASED ON REDWOOD OR CEDAR.
 - I. SLUDGE-BASED MATERIALS ARE NOT ACCEPTABLE.
 - J. CARBON:NITROGEN RATION IS LESS THAN 25:1.
 - K. THE COMPOST SHALL BE AEROBIC WITHOUT MALODOROUS PRESENCE OF DECOMPOSITION PRODUCTS.
 - L. THE MAXIMUM PARTICLE SIZE SHALL BE 0.5 INCH, 80% OR MORE SHALL PASS A #4 SCREEN FOR SOIL AMENDING.
 - M. LEACH PER RECOMMENDATION (WALLACE LABORATORIES, LCC)
11. PLANT MATERIAL SHALL BE GROWN UNDER CLIMATIC CONDITIONS SIMILAR TO THOSE OF THE PROJECT SITE.
12. PLANT SYMBOLS TAKE PRECEDENCE OVER PLANT QUANTITIES SPECIFIED. WHERE SHRUB SYMBOLS ARE MASSED, CONTRACTOR SHALL MAINTAIN A CONSISTENT ON-CENTER, TRIANGULAR SPACING OR AS SPECIFIED IN LEGEND. CONTRACTOR SHALL VERIFY PLANT TOTALS FOR BID PURPOSES.
13. PRIOR TO PLANTING, IRRIGATION SYSTEM SHALL BE FULLY OPERATIONAL AND ALL PLANTING AREAS SHALL BE THOROUGHLY WATERED, PRIOR TO BEGINNING THE PLANTING OPERATION. IRRIGATE ALL PLANTING AREAS NORMALLY FOR TWO WEEKS TO GERMINATE WEEDS. APPLY CONTACT HERBICIDE TO WEEDS ONLY PER MANUFACTURER, MONSANTO "ROUND-UP" OR EQUAL. REPEAT PROCESS IF WEEDS PERSIST.
14. PLANT MATERIAL MAY BE REJECTED AT ANY TIME BY RESIDENT ENGINEER OR LANDSCAPE ARCHITECT DUE TO CONDITION, FORM OR DAMAGE BEFORE OR AFTER PLANTING.
15. ALL TREES WITHIN 10' OR LESS OF HARDSCAPE SHALL BE INSTALLED WITH A ROOT BARRIER. PER SORS D L-6, THE ROOT BARRIER SHALL BE INSTALLED PARALLEL TO HARDSCAPE SURFACE FOR A DISTANCE OF 6" FROM THE CENTER LINE OF THE TREE TRUNK IN BOTH DIRECTIONS, OR AS INDICATED ON PLAN. ROOT BARRIER TO BE MANUFACTURED BY "DEEPROOT" OR "BARRIER" OR EQUIVALENT, AND BE 24" DEEP.
16. PLANTING TABLETS SHALL BE GRO-POWER OR EQUAL PLANTING TABLETS AND SHALL MEET THE REQUIREMENTS PER THE SPECIFICATIONS.
17. ALL PLANTING BEDS SHALL HAVE 2" (TWO INCH) THICK MULCH LAYER. "MULCH" SHALL BE BARK MULCH FROM ONE OF THE FOLLOWING SOURCES: SHREDED FIR OR SHREDED CEDAR. RATES AS SPECIFIED ON PLANS. FREE OF STICKS, STONES, CLAY OR OTHER FOREIGN MATERIAL, OR "EARTHWISE-ECOMULCH" AVAILABLE FROM AJ ECOLOGY INDUSTRIES, INC. PHONE: 619-744-0942.
18. MAINTENANCE PERIOD:
 - SLOPES AND SHRUB BEDS: 120 DAYS
 - TURF: 120 DAYSTHE FOLLOWING FERTILIZATION NOTES ARE PER RECOMMENDATIONS FROM WALLACE LABORATORIES, LCC. (DATED 10/25/10) AND ARE PROVIDED FOR REFERENCE FOR BID PURPOSES ONLY. ACTUAL FERTILIZATION DURING MAINTENANCE PERIOD SHALL BE PER SOIL TESTS TAKEN AT THE TIME OF CONSTRUCTION, FOR SITE MAINTENANCE, APPLY AMMONIUM SULFATE (21-0-0) AT 5LBS. PER 1,000 SQUARE FEET ABOUT 3 TO 4 TIMES A YEAR. MONITOR THE SITE WITH PERIODIC SOIL AND LEAF TISSUE TESTING. APPLY OTHER NUTRIENTS AS NEEDED. APPLY GYPSUM IF REQUIRED. CORRECT IRON DEFICIENCY IF IT DEVELOPS WITH BECKER UNDERWOOD SPRINT 138 Fz OR OTHER FERRIC CHLORIDE IRON.
19. CONTRACTOR IS RESPONSIBLE FOR MAINTAINING ALL AREAS IN A WEED AND DEBRIS-FREE CONDITION THROUGHOUT THE ESTABLISHMENT PERIOD.
20. COORDINATE PLACEMENT OF TREES WITH SITE LIGHTING. CANOPY OF TREE AT ULTIMATE SIZE SHALL NOT BE PLACED SO AS TO CONFLICT WITH LIGHTING THROW ALONG PARK WALKWAYS.
21. ALL PLANTING SHALL BE GUARANTEED THROUGH THE ESTABLISHMENT PERIOD (SEE PLANTING SPECIFICATIONS). ESTABLISHMENT PERIOD SHALL BE 120 DAYS FOR TURF. TREES AND SHRUBS SHALL BE GUARANTEED FOR A PERIOD OF ONE YEAR, BEGINNING FROM THE DATE OF THE FINAL ACCEPTANCE OF THE ESTABLISHMENT PERIOD.
22. AT COMPLETION OF THE ESTABLISHMENT PERIOD, APPLY COMMERCIAL FERTILIZER (15-15-15) AT 2LBS/1000SF TO TURF AREAS ONLY AND WATER IMMEDIATELY WITH A THOROUGH IRRIGATION CYCLE.
23. PROVIDE EROSION CONTROL FABRIC BLANKET ON ALL SLOPES THAT ARE 3:1 OR STEEPER. HYDROSEED ALL SLOPES AT INSTALLATION. PLANT SPECIES SELECTION BY LANDSCAPE ARCHITECT. IF A MATERIAL IS NOT LISTED, THE CONTRACTOR SHALL CREDIT THE OWNER THE BALANCE OF THE AMOUNT. THE CONTRACTOR SHALL BID THE FOLLOWING MATERIAL IN ADDITION TO PLANTS SHOWN ON THE PLANS:
 - 30-5 GAL SHRUBS
 - 30-1 GAL SHRUBS
24. PROVIDE EROSION CONTROL HYDROSEED MIX ON ALL SLOPES PRIOR TO PLANTING.
25. CONTRACTOR SHALL PROVIDE ADDITIONAL PLANT MATERIAL AS SPECIFIED BY LANDSCAPE ARCHITECT AT TIME OF INSTALLATION. PLANT SPECIES SELECTION BY LANDSCAPE ARCHITECT. IF A MATERIAL IS NOT LISTED, THE CONTRACTOR SHALL CREDIT THE OWNER THE BALANCE OF THE AMOUNT. THE CONTRACTOR SHALL BID THE FOLLOWING MATERIAL IN ADDITION TO PLANTS SHOWN ON THE PLANS:
 - 10-24" BOX TREES
 - 30-5 GAL SHRUBS
 - 30-1 GAL SHRUBS
26. NEW MULTIPURPOSE ATHLETIC FIELD MUST HAVE 15" OF TOPSOIL, WHICH MEETS THE HORTICULTURAL REQUIREMENTS PER THE "GREENBOOK" FOR CLASS "A" TOPSOIL. SEE EXHIBIT A SHEET LP-1.1.
27. ALL TURF AREAS OUTSIDE OF THE MULTI-PURPOSE ATHLETIC FIELD SHALL BE FREE OF ALL 1/2" DIAMETER OR LARGER ROCK TO A DEPTH OF 12" OR TURF AREAS MUST BE PLANTED OVER 15" OF TOPSOIL, WHICH MEETS THE HORTICULTURAL REQUIREMENTS PER THE "GREENBOOK" FOR CLASS "A" TOPSOIL.



1 PLANTER ELEVATION AND SECTION
NO SCALE



SECTION

PLANT LEGEND

SYMBOL	BOTANICAL NAME / COMMON NAME	REMARKS	DETAILS
	RELOCATED TREE		2 / LP-1.1
	Relocated Araucaria heterophylla / Norfolk Island Pine		
	NEW TREES		2 / LP-1.1
	Magnolia grandiflora 'Russet' / Southern Magnolia	36" BOX	
	SHRUBS		1 / LP-1.1
	Phormium tenax / New Zealand Flax	5 GAL	
	ORNAMENTAL GRASSES		
	Muhlenbergia rigida 'Nashville' TM / Purple Muhly	5 GAL	
	ACCENT SHRUBS		
	Aloe x 'Blue Elf' / Aloe	1 GAL	
	GROUND COVER TYPE 1		3 / LP-1.1
	Baccharis pilularis 'Pigeon Point' / Coyote Brush	FLATS AT 18" O.C.	
	GROUND COVER TYPE 2		3 / LP-1.1
	Cotoneaster dammeri 'Lowfast' / Bearberry Cotoneaster	1 GAL AT 36" O.C.	

CONSTRUCTION LEGEND

SYMBOL	DESCRIPTION	DETAILS
	1 NEW DECORATIVE CONCRETE SECURITY BOLLARDS MODEL# 112-MOD WITH CUSTOM REBAR CAGE FOOTING BY: US CONCRETE OR APPROVED EQUAL.	A / LP-1.1
	2 LOW VISUAL IMPACT VERDURA GARDEN BLOCK	B / LP-1.1
	3 6"x6" CONCRETE MOW CURB	-
	4 RELOCATED TRAFFIC SIGN POSTS	SEE CIVIL PLANS
	5 LIGHT BOLLARD TO BE RELOCATED	SEE ELECTRICAL PLANS
	6 NEW LOCATION FOR RELOCATED LIGHT BOLLARD	SEE ELECTRICAL PLANS
	7 EXISTING WALL - PROTECT IN PLACE	-
	8 TIMBERFORM W-2884-6 BENCH ON CONCRETE PAD	E / LP-1.1
	9 TIMBERFORM W-2884-8 BENCH ON CONCRETE PAD	E / LP-1.1
	10 EXISTING LIGHT STANDARD - PROTECT IN PLACE	-
	11 RELOCATED BLUE STAR MEMORIAL WITH NEW CONCRETE BASE	-
	12 SEAT WALL - SEE STRUCTURAL PLANS FOR ADDITIONAL DETAILS	D / LP-1.1
	13 POURED IN PLACE RAISED CONCRETE PLANTER WALLS SEE STRUCTURAL PLANS FOR ADDITIONAL DETAILS	C / LP-1.1

SPACE TYPE

PATIENT / HIGH RISK	PATIENT / MODERATE RISK	NON-PATIENT GENERAL AREAS
Operating Suites	General Nursing Units	Lobbies
Cardiac Cath Units	Day Rooms	Public Corridors
Angiography Rooms	Primary Care Clinics	Elevators
TB Bedrooms/Exam Rooms	Food Preparation	Canteen/Retail Store
Intensive Care Units	General Radiology Rooms	Administrative Offices
Urgent Care Units	OT/PT Clinics	Receiving / Warehouse
SPD Storage / Sterilization	Pharmacy	Engineering Shops
Other Special Units Dialysis, Cancer, HIV, Transplant Etc...		

BARRIER / CONTROL TYPE

PATIENT / HIGH RISK	PATIENT / MODERATE RISK	NON-PATIENT GENERAL AREAS
Solid Wall Type: <ul style="list-style-type: none">• Fire Rated Gyp Outside• 6MI Poly Inside• Gaskets Top / Bottom• DoorFrame/Beest HW• Gasketed Door• Negative Pressure• Capped Supply Air	Solid Wall Type: <ul style="list-style-type: none">• Fire Rated Gyp In/Out• 6MI Poly Inside• Gaskets Top / Bottom• DoorFrame/Beest HW• Gasketed Door• Negative Pressure• Capped Supply Air	Solid Wall Type: <ul style="list-style-type: none">• Fire Rated Gyp In/Out• 6MI Poly Inside• Gaskets Top / Bottom• DoorFrame/Beest HW• Gasketed Door• Negative Pressure• Capped Supply Air

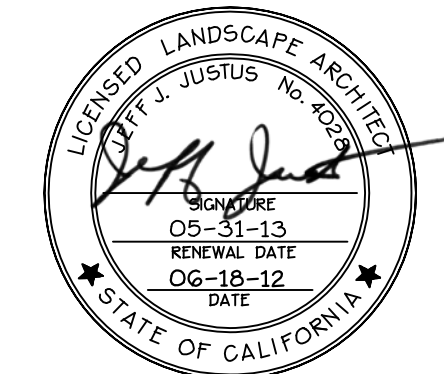
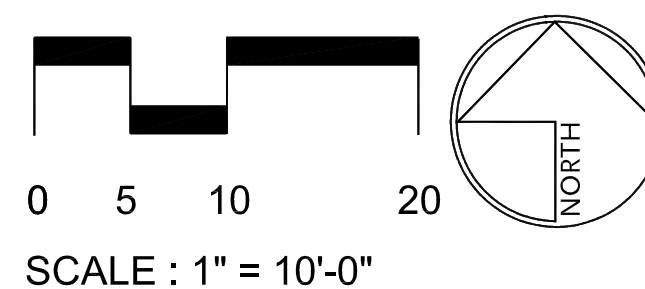
SCHMIDT DESIGN GROUP, INC.
BALANCING ARTISTIC EXPRESSION IN DESIGN WITH ENVIRONMENTAL SENSITIVITY
2655 Fourth Avenue, San Diego, CA 92103
telephone (619) 236-1462 facsimile (619) 236-8792
www.schmidt-design.com
Lic. CA 2138, NV 219, AZ 34139

SDG PROJ NO: 114802
PLANTING PLAN
DRAWN BY: AS
CHECKED BY: JJ

architecture and construction services
gkkworks
Project #40086
1775 Hancock Street, Suite 150, San Diego, CA 92110
619 398 0215 • 619 814 1249 fax

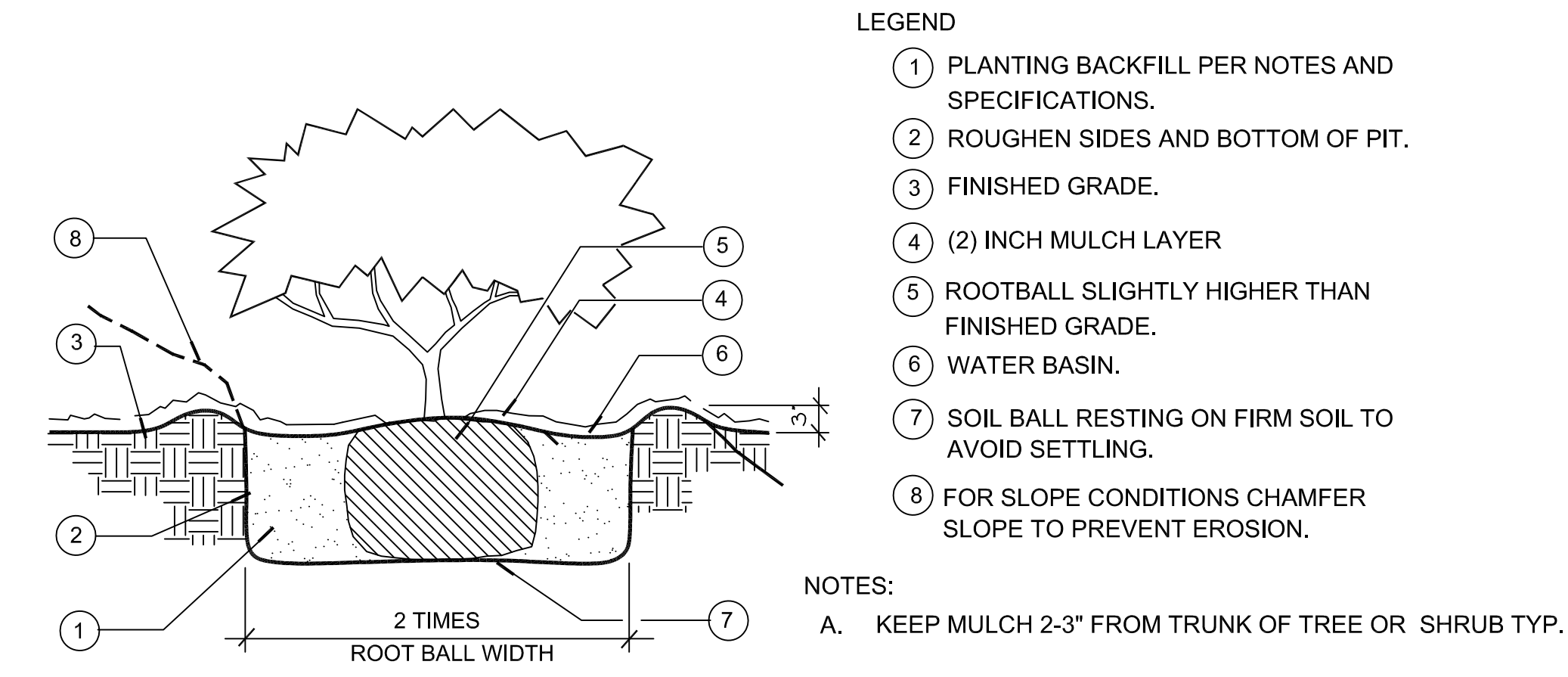
Renovate Dental to Ambulatory Care (PHASE 2)

PLANTING PLAN		BUILDING NO. 1	
		Department of Veterans Affairs 3350 LaJolla Village Dr. San Diego, California 92161	
		 VA San Diego Healthcare System Desert Pacific Healthcare Network	
USING SERVICE:		DATE:	JUNE 15, 2012
FACILITIES MGMT:		CHECKED:	J.J.
CHIEF OF STAFF:		DRAWN:	A.S.
CHIEF OF OPERATIONS:		SCALE:	AS NOTED
DIRECTOR:		DRAWING No.	SD-2313
		LP-1.0	
		SHEET NO.	OF
		PROJ. No.	664-12-118



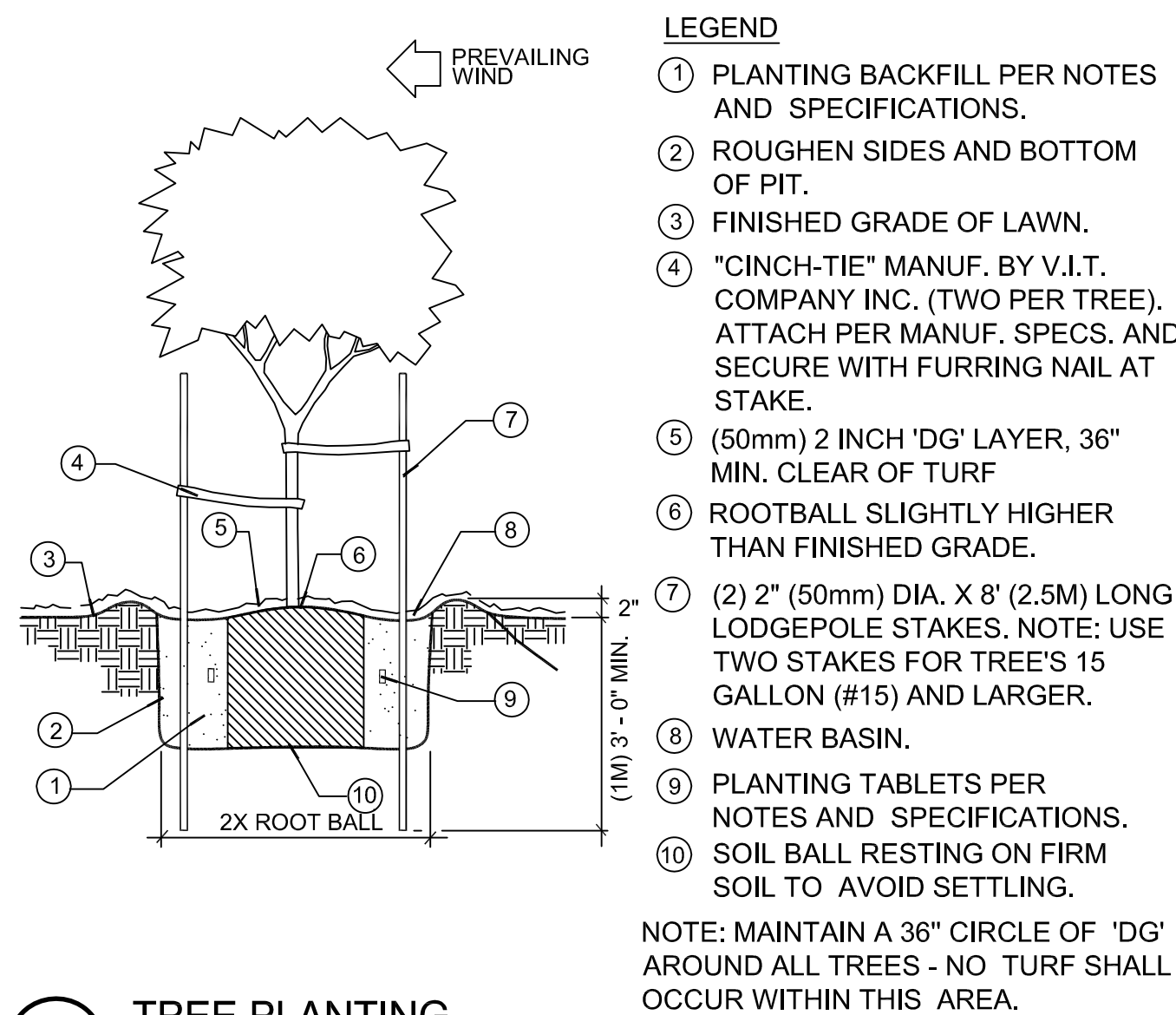
100% CONSTRUCTION DOCUMENTS SUBMITTAL

three inches = one foot
one and one-half inches = one foot
one inch = one foot
three-quarters inch = one foot
one-half inch = one foot
three-eighths inch = one foot
one-quarter inch = one foot
one-eighth inch = one foot



1 SHRUB PLANTING

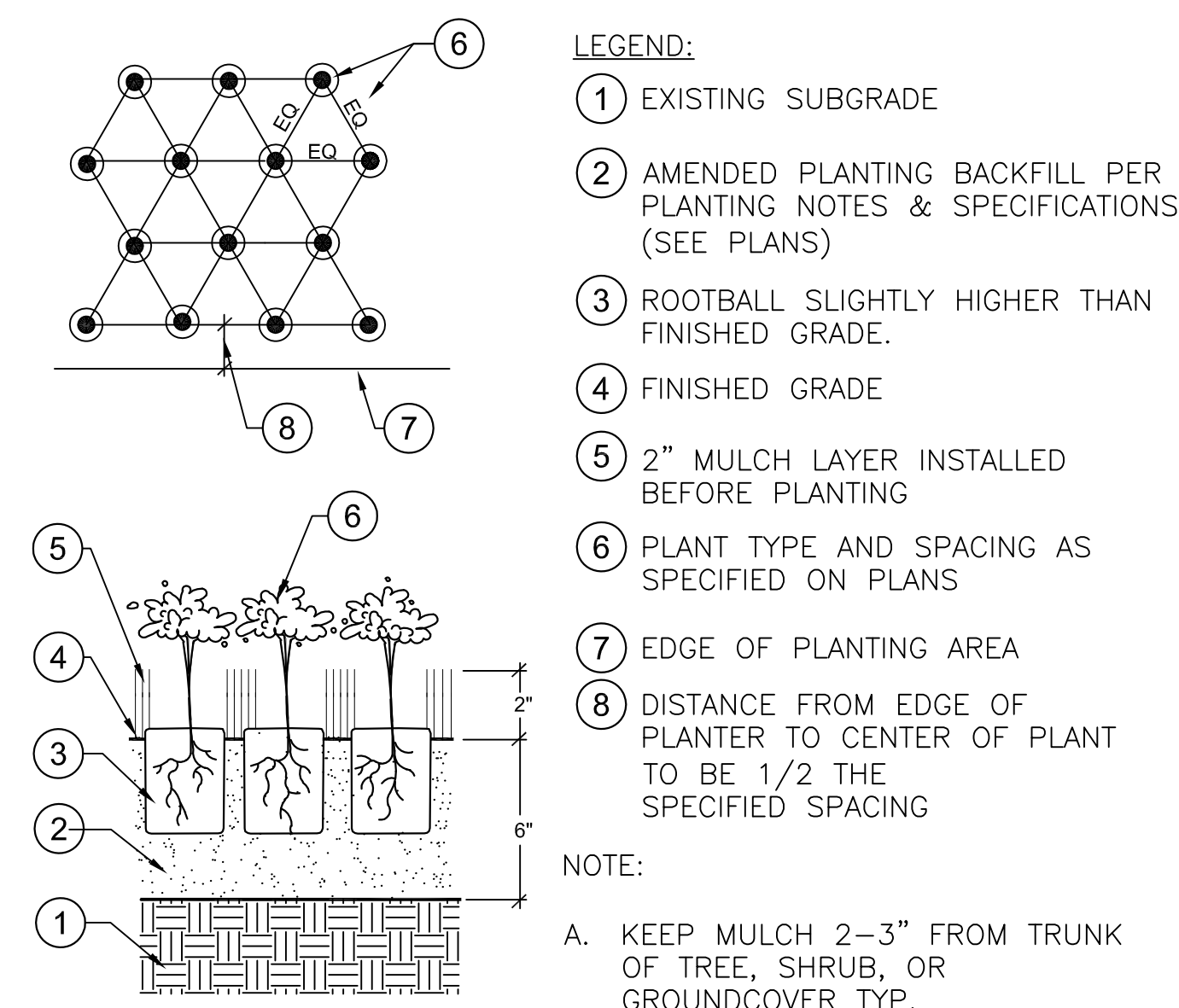
NTS



2 TREE PLANTING

NO SCALE

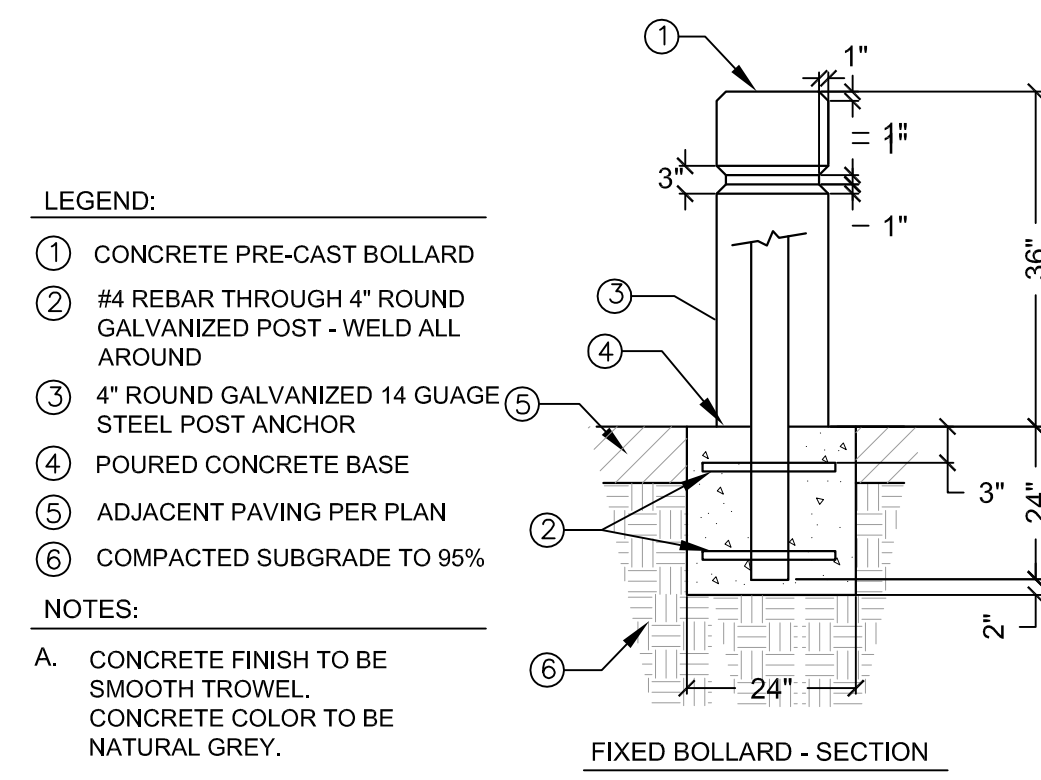
329343-84



3 GROUNDCOVER PLANTING

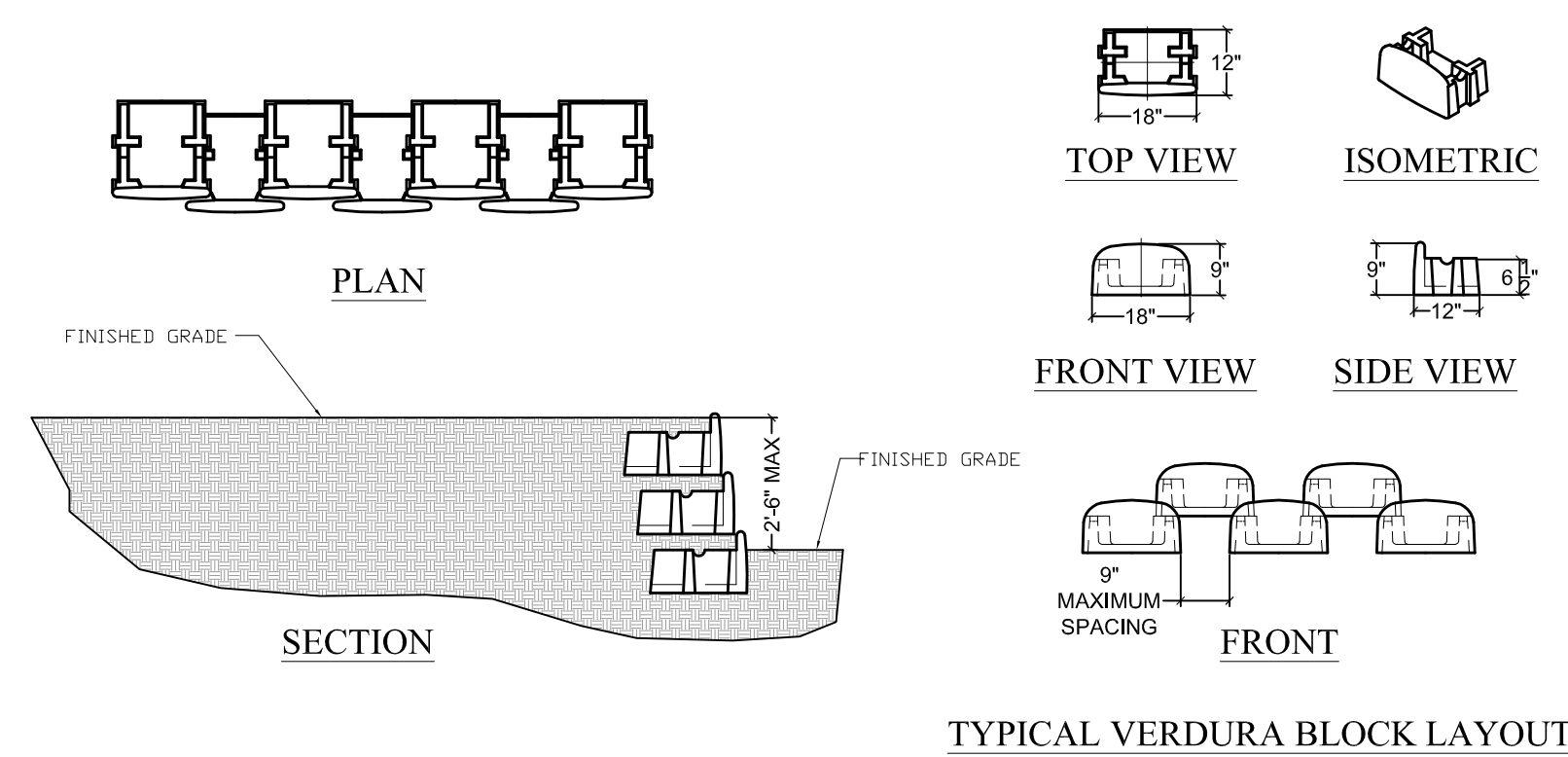
NOT TO SCALE

329333.83-81



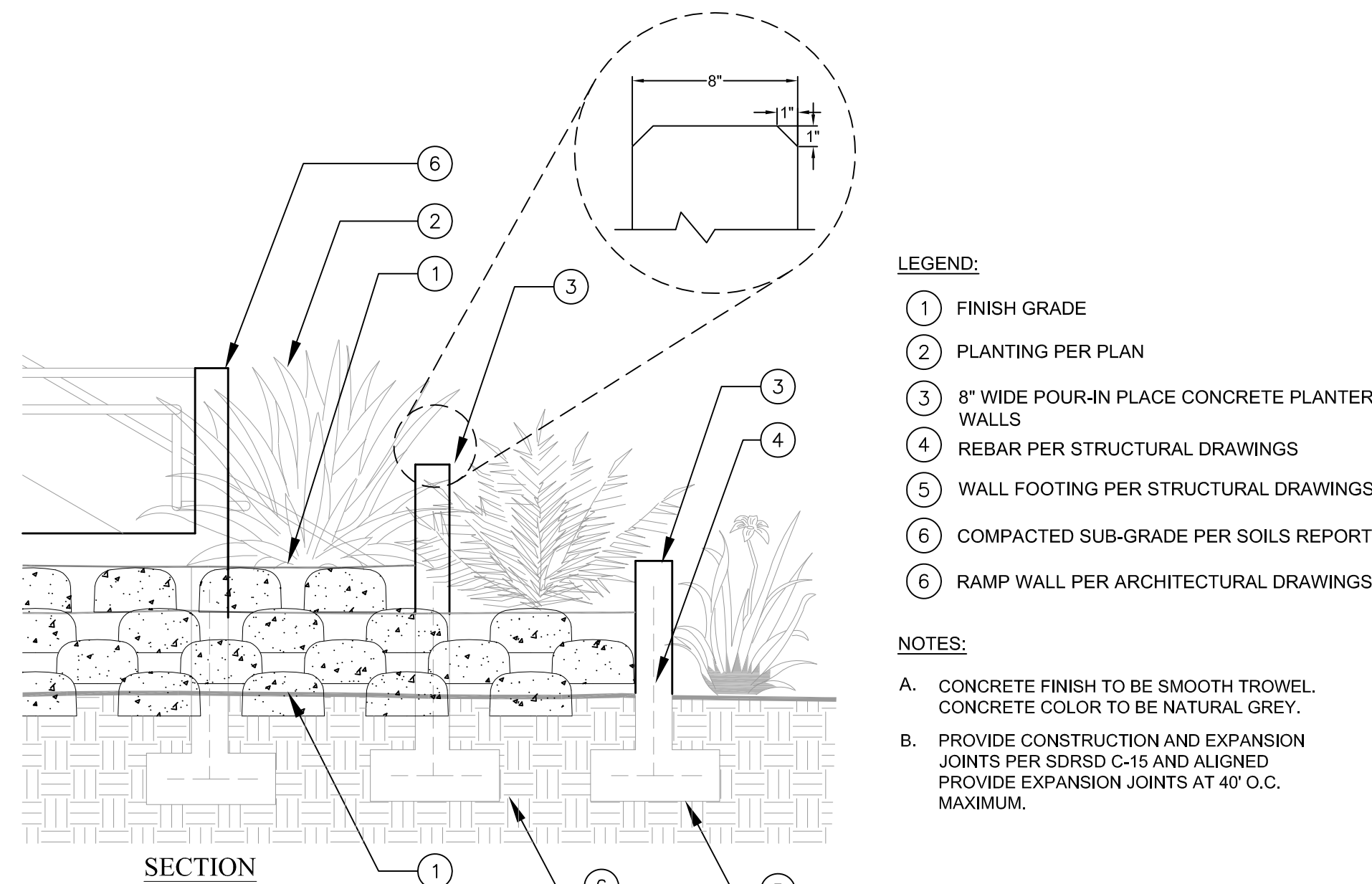
A TYPICAL FIXED BOLLARD

NO SCALE



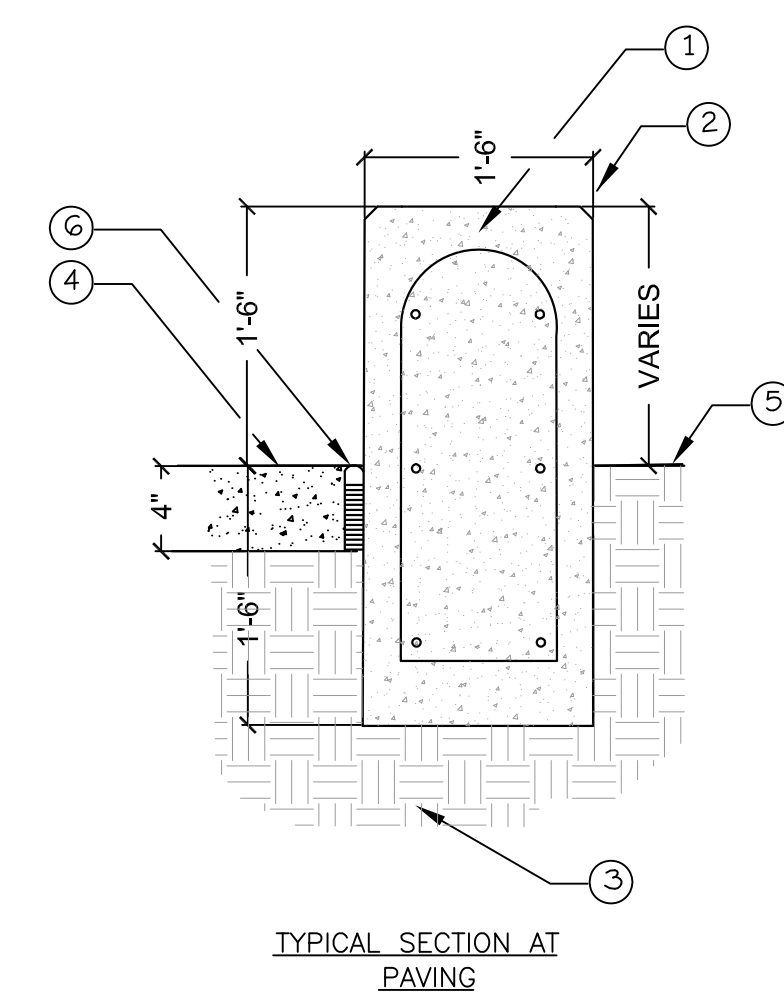
B LOW VISUAL IMPACT GARDEN WALL

NO SCALE



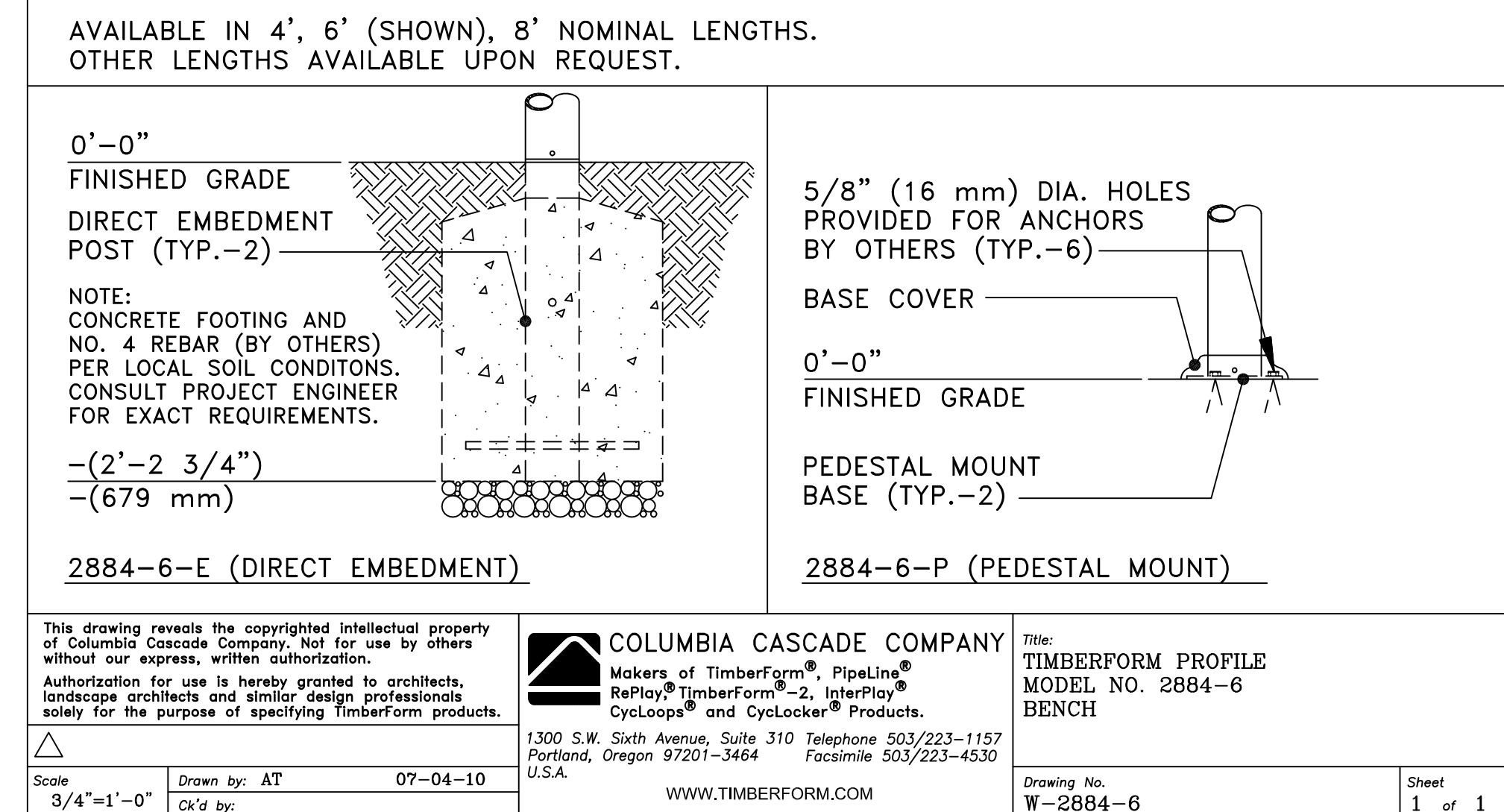
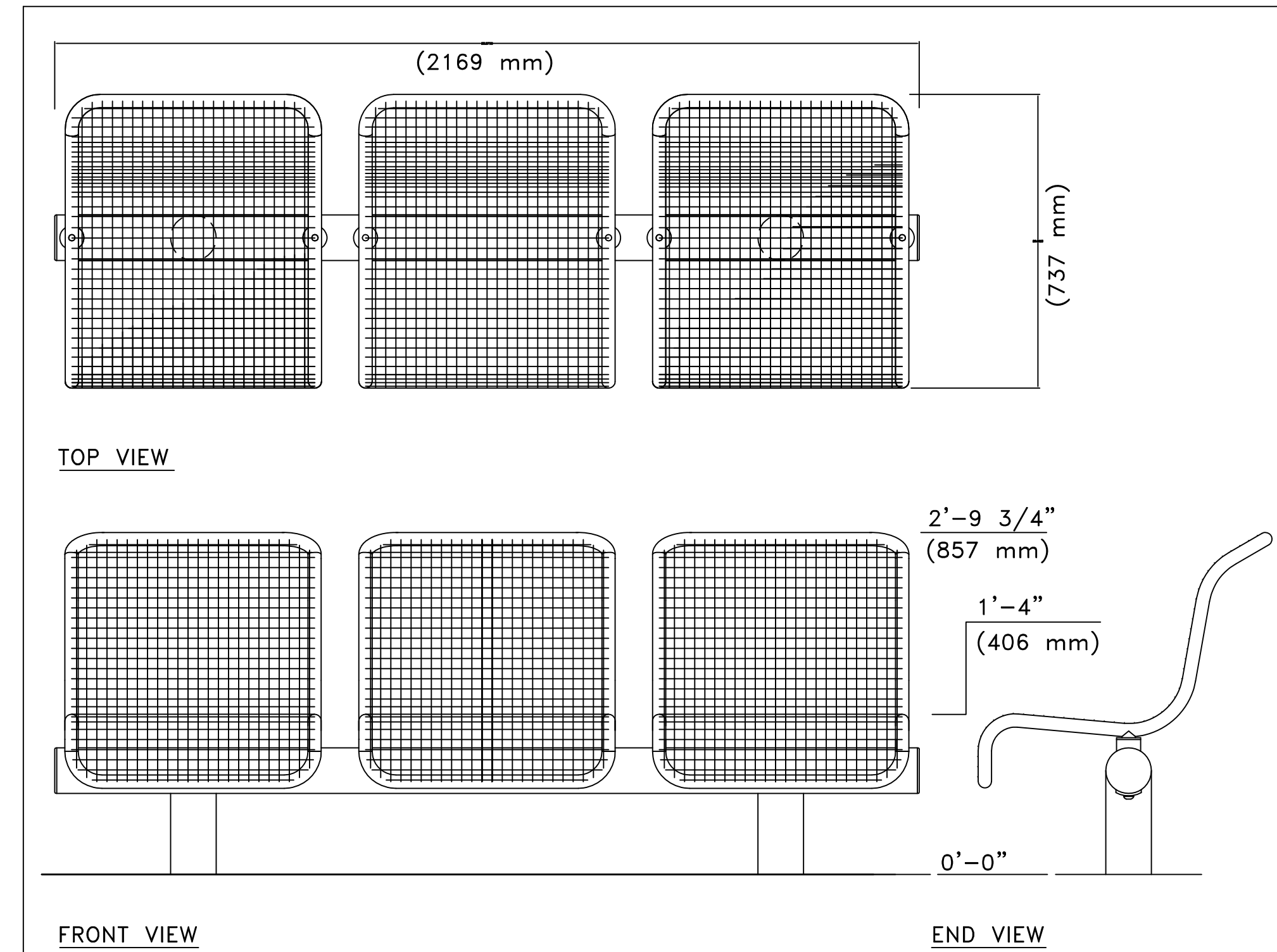
C RAISED PLANTER WALLS

NO SCALE



D POURED IN PLACE CONCRETE SEATWALL

NO SCALE



E TIMBERFORM BENCH

NO SCALE

SPACE TYPE

PATIENT / HIGH RISK	PATIENT / MODERATE RISK	NON - PATIENT GENERAL AREAS
Operating Suites	General Nursing Units	Lobbies
Cardiac Cath Units	Day Rooms	Public Corridors
Angiography Rooms	Primary Care Clinics	Elevators
TB Bedrooms/Exam Rooms	Food Preparation	Canteen/Retail Store
Intensive Care Units	General Radiology Rooms	Administrative Offices
Urgent Care Units	OT/PT Clinics	Receiving / Warehouse
SPD Storage / Sterilization	Pharmacy	Engineering Shops
Other Special Units Dialysis, Cancer, HIV, Transplant Etc...		

BARRIER / CONTROL TYPE

PATIENT / HIGH RISK	PATIENT / MODERATE RISK	NON - PATIENT GENERAL AREAS
Solid Wall Type: • Fire Rated Gyp Outside • 6MM Poly Inside • Gaskets Top / Bottom • DoorFrame/Bezel HW • Gasketed Door • Negative Pressure • Capped Supply Air	Solid Wall Type: • Fire Rated Gyp In/Out • 6MM Poly Inside • Gaskets Top / Bottom • DoorFrame/Bezel HW • Gasketed Door • Negative Pressure • Capped Supply Air	Solid Wall Type: • Fire Rated Gyp In/Out • 6MM Poly Inside • Gaskets Top / Bottom • DoorFrame/Bezel HW • Gasketed Door • Negative Pressure • Capped Supply Air

SCHMIDT DESIGN GROUP, INC.

BALANCING ARTISTIC EXPRESSION IN DESIGN WITH ENVIRONMENTAL SENSITIVITY

2655 Fourth Avenue, San Diego, CA 92103
telephone (619) 236-1462 facsimile (619) 236-8792
www.schmidt-design.com

Lic. CA 2138, NV 219, AZ 34139

SDG PROJ NO: 114802
PLT DATE: 02/28/11
DRAWN BY: AS
CHECKED BY: JJ

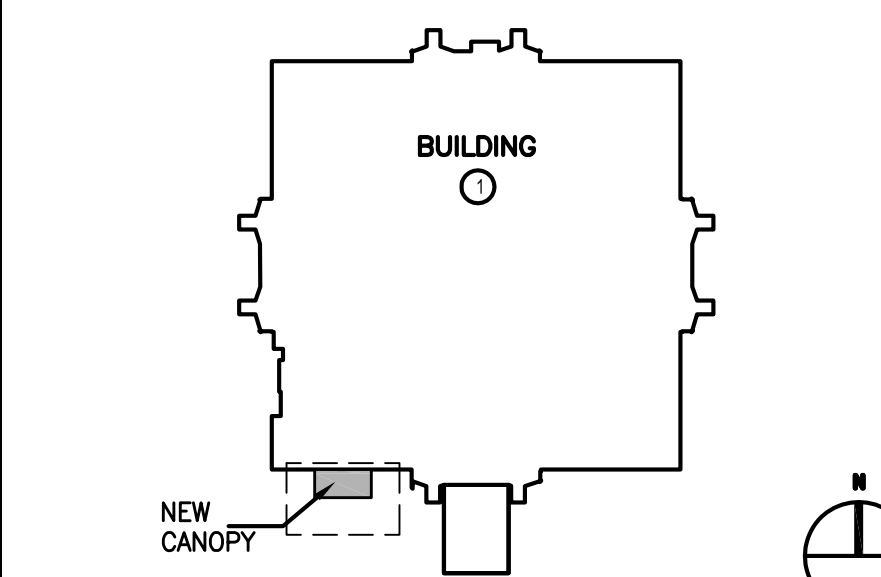
architecture and construction services

gkkworks

Project #40086

1775 Hancock Street, Suite 150, San Diego, CA 92110
619 398 0215 • 619 814 1249 fax

Renovate Dental to Ambulatory Care (PHASE 2)

PLANTING PLAN	BUILDING NO. 1
	<p>Department of Veterans Affairs 3350 LaJolla Village Dr. San Diego, California 92161</p> <p>VA San Diego Healthcare System Desert Pacific Healthcare Network</p>
KEY PLAN	<p>USING SERVICE:</p> <p>FACILITIES MGMT:</p> <p>CHIEF OF STAFF:</p> <p>CHIEF OF OPERATIONS:</p> <p>DIRECTOR:</p> <p>DATE: JUNE 15, 2012</p> <p>CHECKED: J.J.</p> <p>DRAWN: A.S.</p> <p>SCALE: AS NOTED</p> <p>DRAWING No. SD-2313</p> <p>LP-1.1</p> <p>SHEET NO. OF</p> <p>PROJ. No. 664-12-118</p>

