

GENERAL NOTES:

- A: ALL ELECTRICAL EQUIPMENT INDICATED BY A LIGHT SHADED LINE IS EXISTING UNLESS NOTED OTHERWISE.

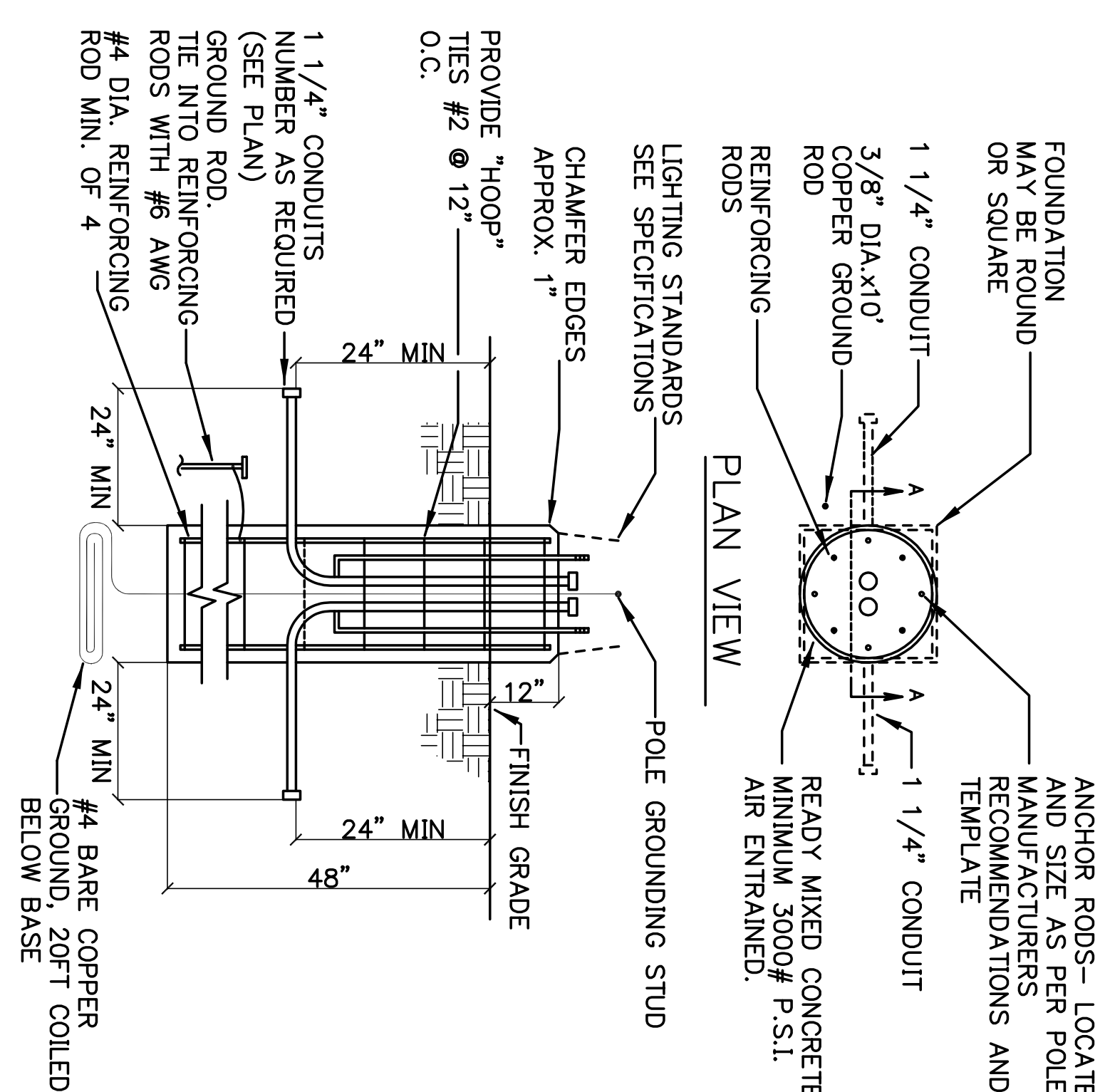
SPECIFIC NOTES:

- A. ALL ELECTRICAL EQUIPMENT IS EXISTING. B. A LIGHT STRADED LINE IS EXISTING UNLESS NOTED OTHERWISE.
- ## SPECIFIC NOTES: (CONT)
- 1 CONCRETE ENCASE THE NEW DUCTBANK.
 - 2 REFER TO MEDIUM VOLTAGE ONE-LINE DIAGRAM ON SHEET 5-E701 /1 FOR NEW FEEDER SIZES).
 - 3 REFER TO ONE-LINE DIAGRAM ON SHEET 5-702 FOR FEEDER SIZES).
 - 4 DISCONNECT EXISTING LIGHT FIXTURE, CLEAN, REWAP AND RELOCATE LIGHT FIXTURE(S) TO NEW LOCATION(S) AS INDICATED. REFER TO DETAIL 5-E501 /3 FOR LIGHTING POLE FOUNDATION.
 - 5 INTERCEPT EXISTING SITE LIGHTING CIRCUITING AND EXTEND TO NEW LOCATIONS OF FIXTURES.
 - 6 PROVIDE NEW SITE LIGHTING CIRCUITING TO MATCH EXISTING.
 - 7 DISCONNECT AND REMOVE EXISTING CABLES AND ABANDON EXISTING DUCTBANK.
 - 8 DISCONNECT, REMOVE AND RELOCATE EXISTING DISCONNECT SWITCHES FOR POWER AND CONTROL CIRCUITS TO NEW LOCATION. REFER TO MECHANICAL PLANS.
 - 9 DISCONNECT AND REMOVE EXISTING SWITCHES NO LONGER REQUIRED FOR NEW WORK.

SPECIFIC NOTES: (CONT)

- 5 INTERCEPT EXISTING SITE LIGHTING CIRCUITING AND EXTEND TO NEW LOCATIONS OF FIXTURES.
- 6 PROVIDE NEW SITE LIGHTING CIRCUITING TO MATCH EXISTING.
- 7 DISCONNECT AND REMOVE EXISTING CABLES AND ABANDON EXISTING DUCTBANK.
- 8 THIS WORK TO BE EXCLUDED AS BID ALTERNATE #4. REFER TO SPECIFICATION SECTION 01.00.00, GENERAL REQUIREMENTS FOR DESCRIPTION OF THIS BID ITEM.
- 9 EXISTING PARALLELING SWITCHGEAR MSG-1 LOCATED IN THIS BUILDING.
- 10 REFER TO DETAIL 13 ON SHEET 5-E501 FOR TRANSFORMER P-AD DETAIL.
- 11 FOR CONTINUATION OF CIRCUITING, REFER TO ONE-LINE DIAGRAM ON SHEET 5-EED2S AND PARTIAL PLAN 5-E-402/2. FEEDS EXTEND TO PANELBOARDS P3G-C01, P3G-C02, P3G-C03 AND CONTROL WIRING PULLBOX.
- 12 FOR CONTINUATION OF CIRCUITING, REFER TO ONE-LINE DIAGRAM ON SHEET 5-EV02.

SECTION A-A



3 TYPICAL LIGHTING POLE FOUNDATION DETAIL

NO SCALE

**100%-FINAL-NOT FOR CONSTRUCTION
FULLY SPRINKLERED**

[illegible]