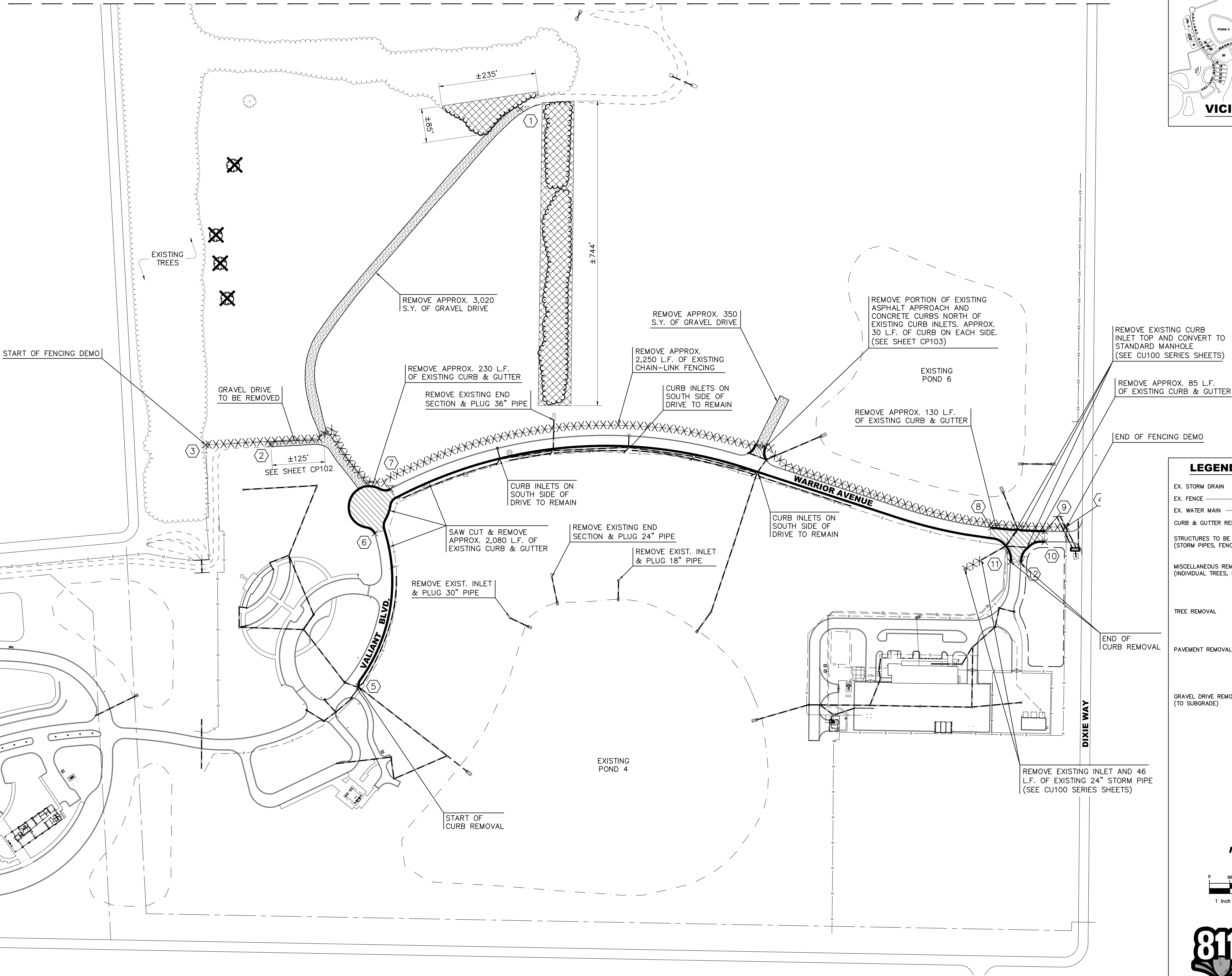
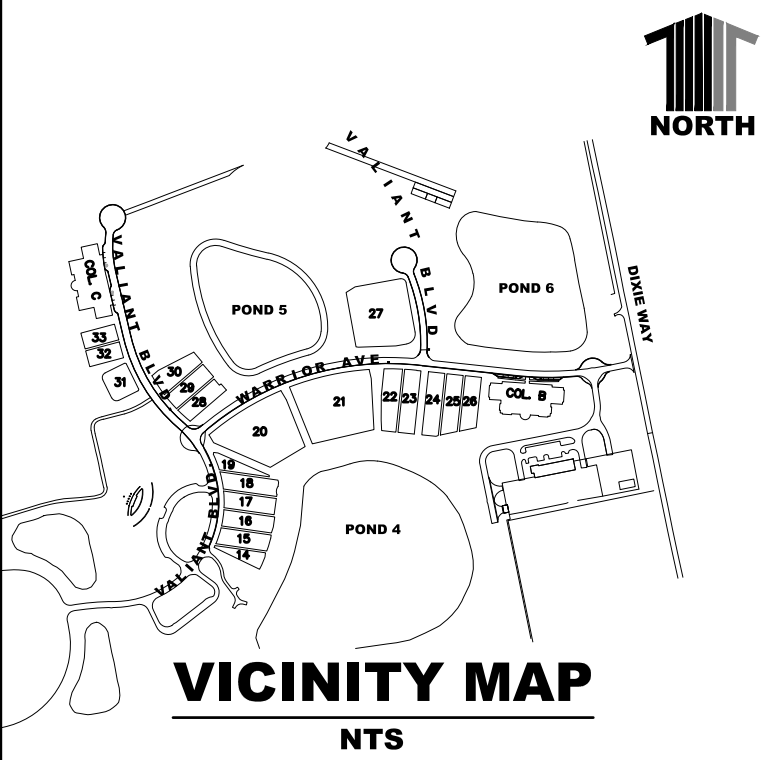


REMOVAL COORDINATES			
Point #	Northing	Easting	Description
1	1609483.83	699250.16	GRAVEL
2	1608555.50	698824.15	GRAVEL
3	1608521.38	698669.83	FENCE
4	1608761.69	700766.44	FENCE
5	1608021.47	699157.67	CURB
6	1608395.64	699118.48	CURB
7	1608509.66	699133.11	CURB
8	1608722.05	700587.05	CURB
9	1608740.60	700716.80	CURB
10	1608715.53	700721.93	CURB
11	1608650.28	700650.76	CURB
12	1608653.93	700676.01	CURB
13	1610961.41	698973.91	FENCE
14	1610974.66	699016.91	FENCE

SEE SHEET CD102 FOR LOCATION OF POINTS 13-14

- NOTE:
1. REFER TO SHT LI201 FOR IRRIGATION DEMO.
 2. REFER TO SHT LS101 FOR SIGNAGE REMOVAL.
 3. ALL GRAVEL TO BE REMOVED TO SUBGRADE.

MATCHLINE SEE SHEET CD102



LEGEND

- EX. STORM DRAIN
- EX. FENCE
- EX. WATER MAIN
- CURB & GUTTER REMOVAL
- STRUCTURES TO BE REMOVED (STORM PIPES, FENCING, ETC.)
- MISCELLANEOUS REMOVAL (INDIVIDUAL TREES, LIGHT POLES, ETC.)
- TREE REMOVAL
- PAVEMENT REMOVAL
- GRAVEL DRIVE REMOVAL (TO SUBGRADE)



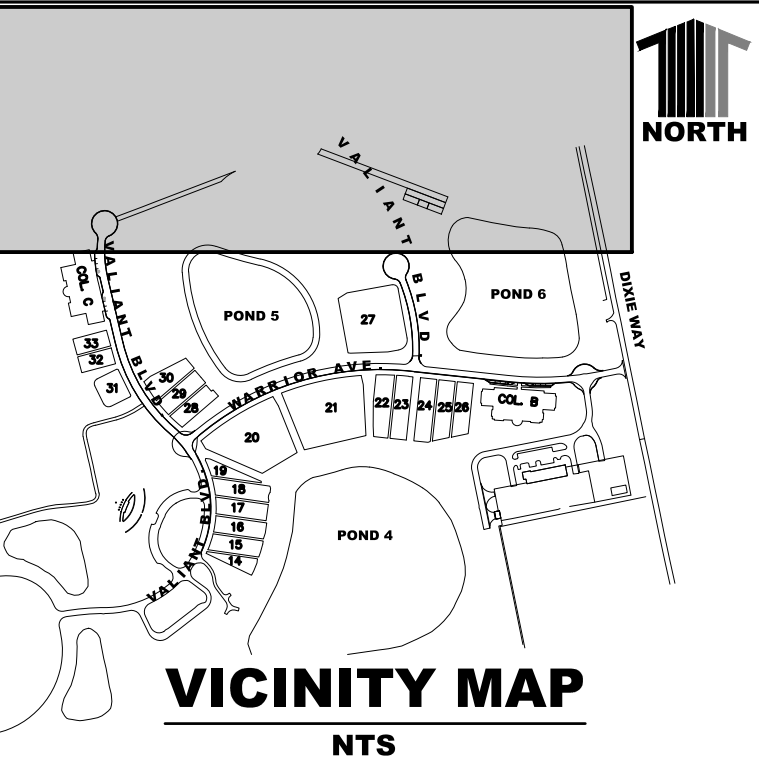
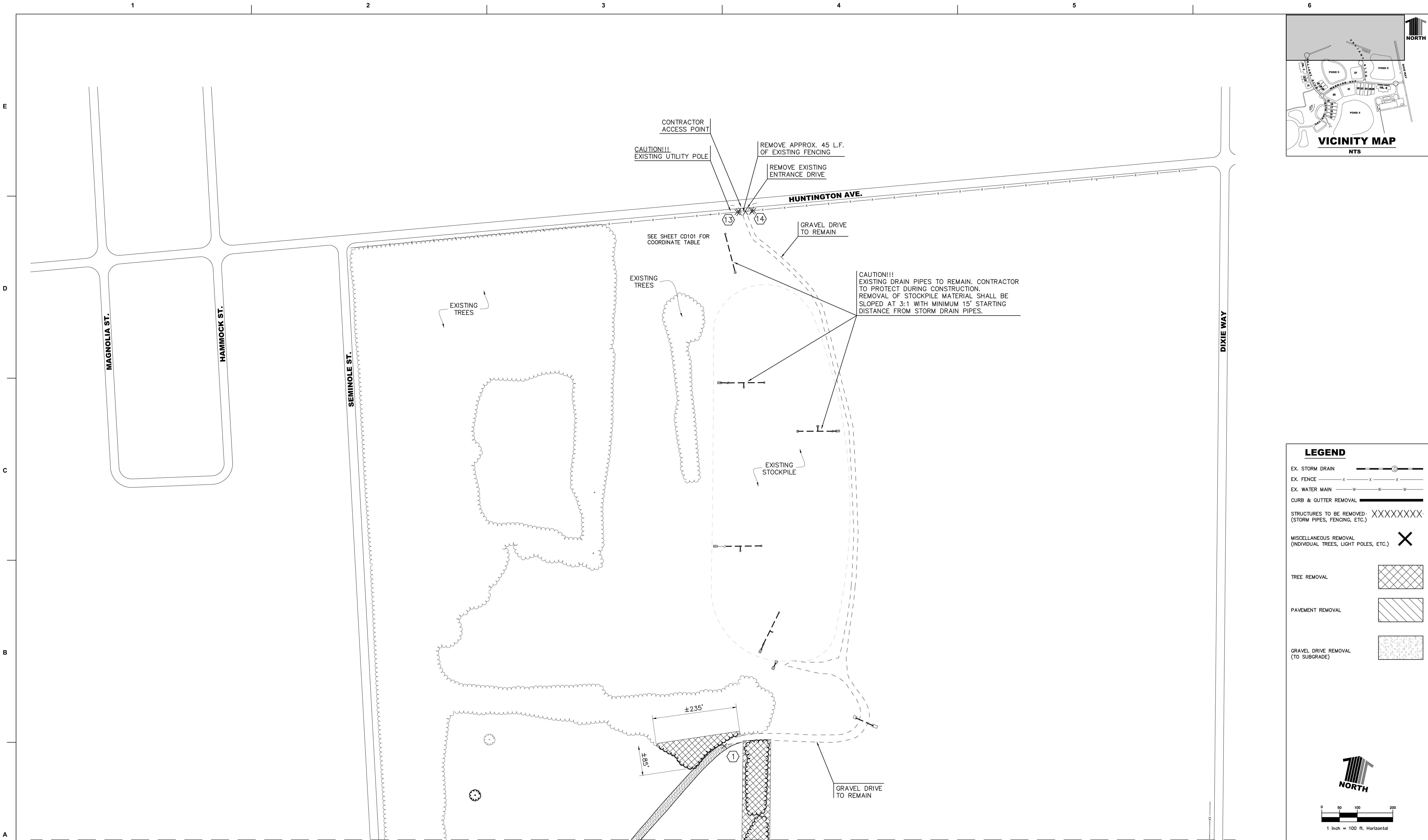
0 50 100 200
1 inch = 100 ft. Horizontal



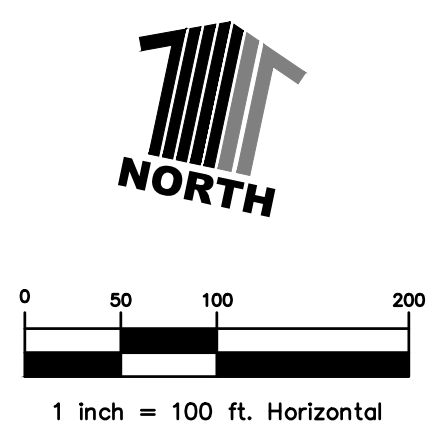
1-800-432-4770
Florida Utility Notification

BID DOCUMENTS

		DESIGN CONSULTANTS:		ARCHITECT / ENGINEER OF RECORD:		SEAL:		Office of Construction and Facilities Management		CAPE CANAVERAL NATIONAL CEMETERY PHASE TWO DEVELOPMENT		LOCATION MIMS, FLORIDA		BUILDING NUMBER	
		Cemetery Expertise: MKEC Engineering Ken Kallenbach (316) 684-9600		Irrigation: Aqua Engineering Bob Beccard (970) 372-6104		Surveying & Hydraulics: Fabre Engineering & Surveying Frank Fabre (850) 433-6438		MEP: Spur Design Ben Noe (913) 369-7264		DATE 10-25-2019		DRAWN JWC		CHECKED KK	
		Landscape Architect: Foster Conant Matt Allen (407) 648-2225		Commissioning: CTS, LLC Kris Linster (904) 588-3057		Cost Estimating: MOCA Cost Engineering Todd Waddle (850) 389-8131		Geotechnical Engineering: Terracon Consultants Jay Casper (720) 545-5807		APPROVED		DRAWING TITLE DEMOLITION PLAN		PROJECT NUMBER 934CM2003	
MARK DESCRIPTION		DATE												DRAWING NUMBER CD101 15 OF 145	




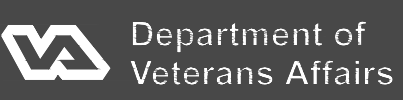
LEGEND	
EX. STORM DRAIN	
EX. FENCE	
EX. WATER MAIN	
CURB & GUTTER REMOVAL	
STRUCTURES TO BE REMOVED (STORM PIPES, FENCING, ETC.)	XXXXXXXXXX
MISCELLANEOUS REMOVAL (INDIVIDUAL TREES, LIGHT POLES, ETC.)	X
TREE REMOVAL	
PAVEMENT REMOVAL	
GRAVEL DRIVE REMOVAL (TO SUBGRADE)	





CALL BEFORE YOU DIG
811
OR
1-800-432-4770
Florida Utility Notification

BID DOCUMENTS

			DESIGN CONSULTANTS:				ARCHITECT / ENGINEER OF RECORD:				SEAL:				Office of Construction and Facilities Management		CAPE CANAVERAL NATIONAL CEMETERY PHASE TWO DEVELOPMENT		LOCATION MIMS, FLORIDA		BUILDING NUMBER					
			Cemetery Expertise: MKEC Engineering Ken Kallenbach (316) 684-9600		Irrigation: Aqua Engineering Bob Beccard (970) 372-6104		Surveying & Hydraulics: Fabre Engineering & Surveying Frank Fabre (850) 433-6438		MEP: Spur Design Ben Noe (913) 369-7264		 Calibre Engineering, Inc. 9090 South Ridgeline Boulevard, Suite 105 Highlands Ranch, CO 80129 (303) 730-0434 www.calibre-engineering.com Construction Management Civil Engineering Surveying						APPROVED		DATE 10-25-2019		DRAWN JWC		CHECKED KK		PROJECT NUMBER 934CM2003	
			Landscape Architect: Foster Conant Matt Allen (407) 648-2225		Commissioning: CTS, LLC Kris Linster (904) 588-3057		Cost Estimating: MOCA Cost Engineering Todd Waddle (850) 389-8131		Geotechnical Engineering: Terracon Consultants Jay Casper (720) 545-5807																	
MARK DESCRIPTION																			DRAWING TITLE DEMOLITION PLAN		DRAWING NUMBER CD102 16 OF 145					