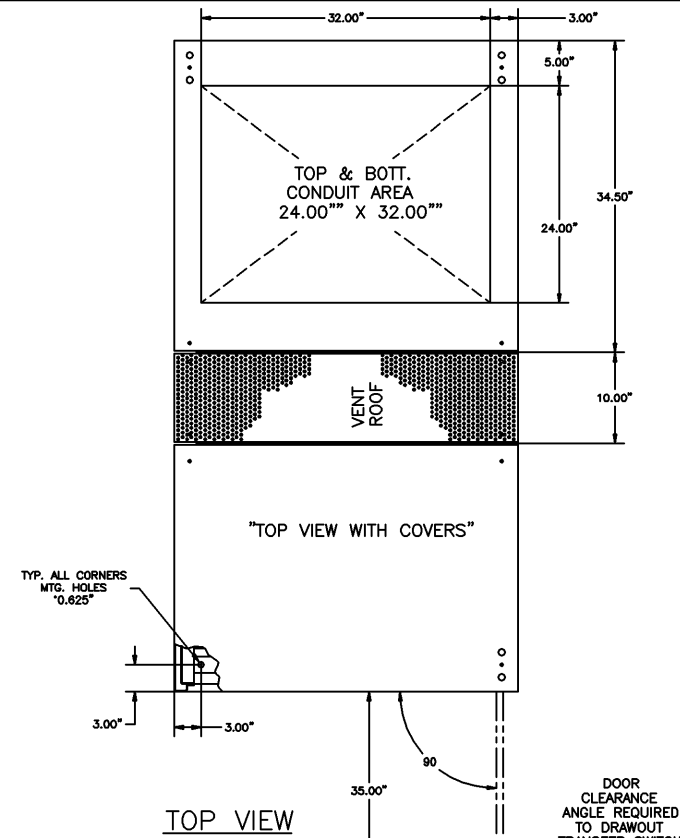



OUTLINE & MOUNTING FOR **ASCO**® 7000 SERIES AUTOMATIC TRANSFER SWITCH & BYPASS-ISOLATION SWITCHES TYPES 7ATB, 7ACTB & 7ADTB RATED 2600-3000 AMPERES



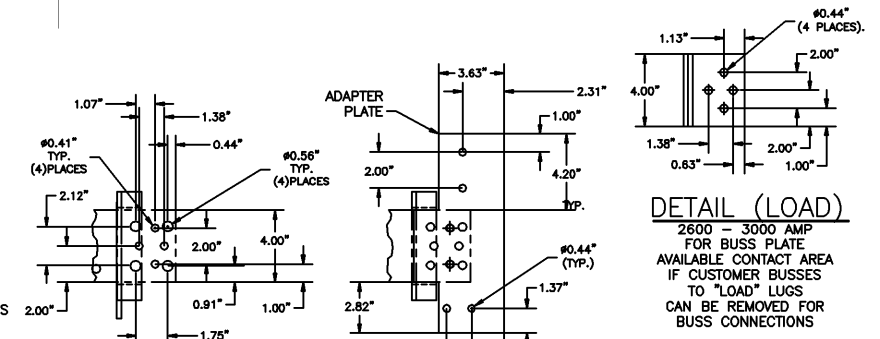
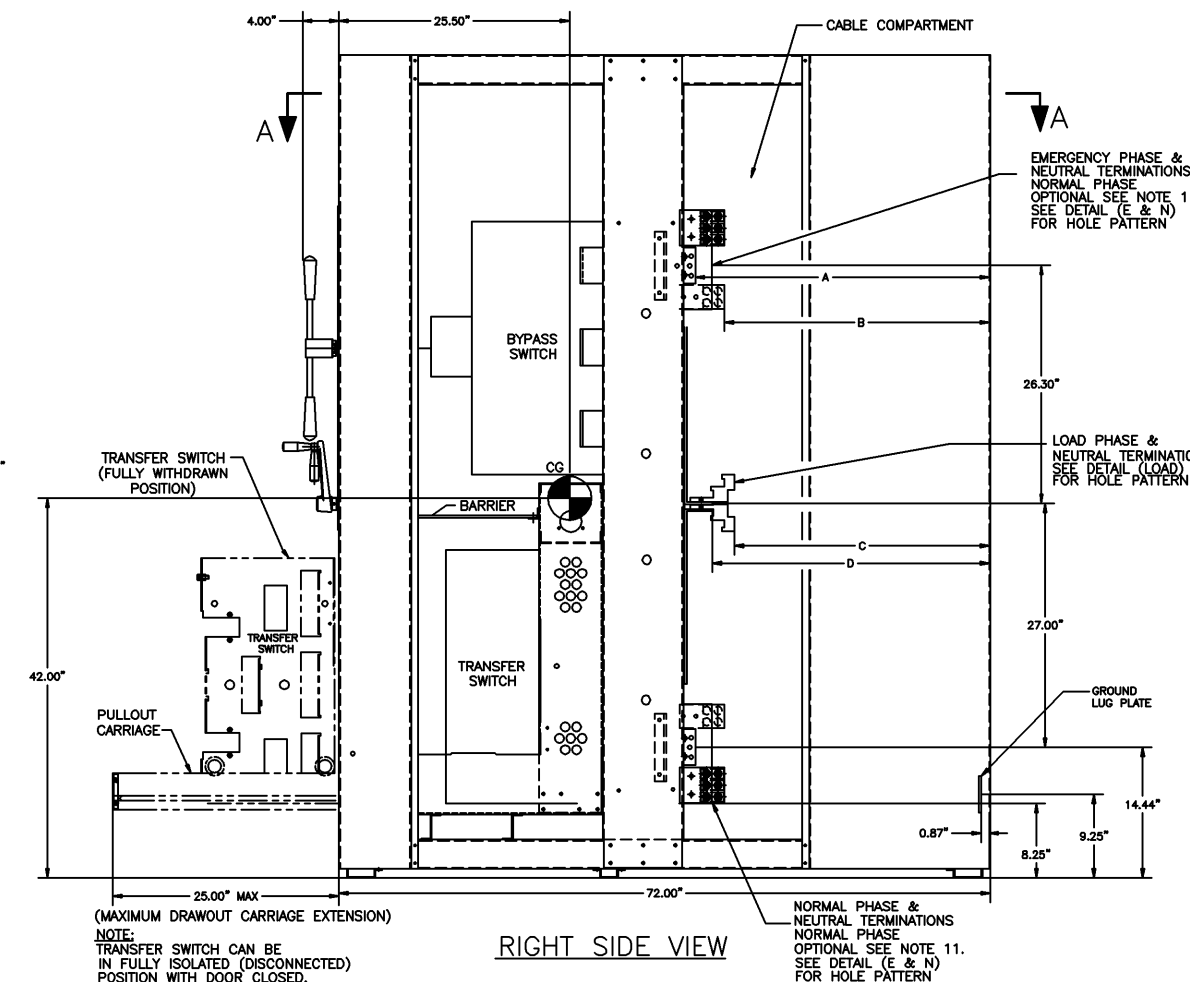
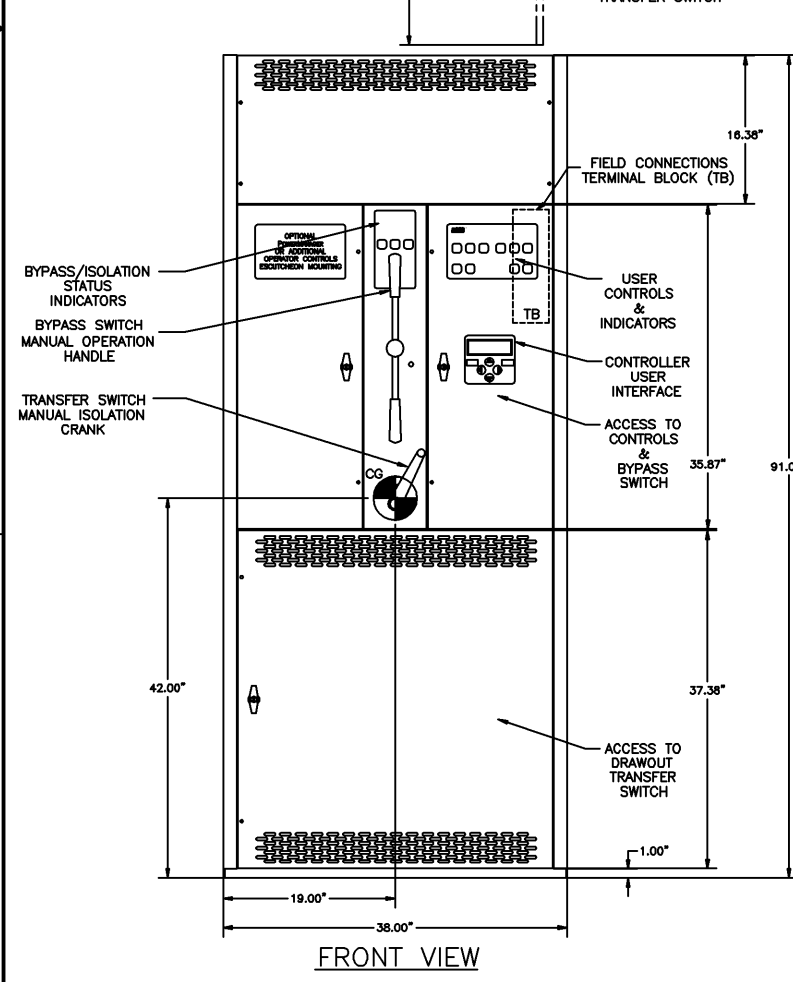
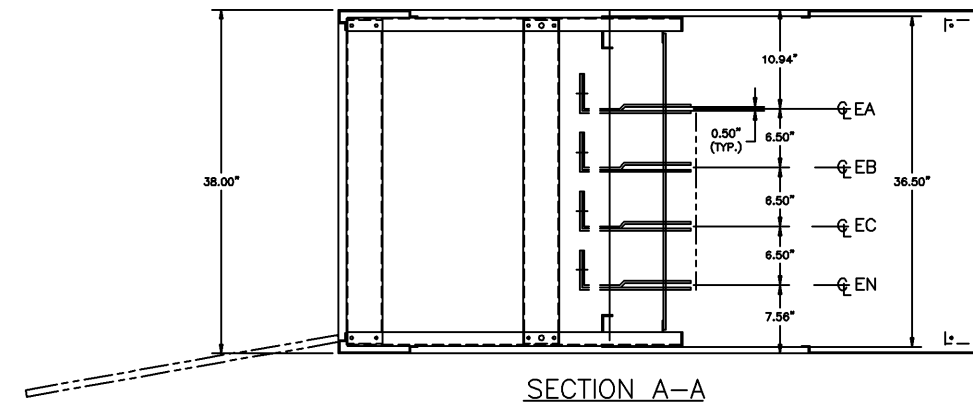
BUS/LUG DISTANCE TO INSIDE OF BACK PANEL		
	DIM.	2600/3000 /
EMER & NORM BUS TO INSIDE OF BACK PANEL	"A"	32.80"
EMER & NORM LUG TO INSIDE OF BACK PANEL	"B"	29.50"
LOAD LUG TO INSIDE OF BACK PANEL	"C"	28.25"
LOAD BUS TO INSIDE OF BACK PANEL	"D"	30.75"

## GENERAL NOTES



1. TYPE 1 ENCLOSURE, FREE STANDING, FLOOR MOUNTED, CODE GAUGE STEEL.
  2. NEC STANDARD GAUGE PAN TYPE DOORS WITH LOCKABLE HANDLES AND REMOVABLE COVERS.
  3. FINISH: ANSI 61 GRAY, POLYESTER POWDER.
  4. CONSTRUCTION IS IN ACCORDANCE WITH APPLICABLE REQUIREMENTS OF UL 1008.
  5. PADLOCKING PROVISIONS ARE INCLUDED:  
ISOLATION CRANK: THE TRANSFER SWITCH ISOLATION CRANK MAY BE PADLOCKED WITH THE TRANSFER SWITCH IN THE FULLY ISOLATED (DISCONNECTED POSITION).
  6. UNIT CAN BE ADAPTED FOR CONNECTION OF BUS DUCT FLANGES. (CONSULT FACTORY)
  7. RECOMMENDED CLEARANCES:  
FRONT: 48.00" INCHES  
REAR: 36.00" INCHES
  8. A 20% RATED GROUND BUS IS PROVIDED AT THE BOTTOM REAR OF THE CABLE COMPARTMENT.
  9. A FULL RATED NEUTRAL CONNECTION FOR EACH SOURCE AND THE LOAD IS OPTIONAL. WHEN PROVIDED IT IS IN ONE OF THE FOLLOWING FORMATS AS SPECIFIED BY THE CATALOG NO. NEUTRAL TYPE;  
  
A: SOLID NEUTRAL BUS  
  
B: SWITCHED NEUTRAL POLE  
  
C: OVERLAPPING NEUTRAL POLE (NOT AVAILABLE ON 7ADTB UNITS)
10.  CENTER OF GRAVITY

CABLING NOTES

1. ALL SIZES SUPPLIED STANDARD WITH MECHANICAL (SCREW TYPE) LUGS ON THE NORMAL, EMERGENCY & LOAD SUITABLE FOR CONNECTION OF TEN (10) 1/0-750 MCM CU/AL CABLES.  
  
SUITABLE WIRE BENDING SPACE IS PROVIDED FOR UP TO TEN (10) 600 MCM CABLES PER TERMINAL PER NFPA 70.
2. OPTIONAL COPPER CRIMP LUGS MAY BE SUPPLIED. UP TO EIGHT (8) TWO HOLE, LONG BARREL CU CRIMP LUGS RATED FOR UP TO 600 MCM. (REFER TO CRIMP LUG INSTALLATION DATA PROVIDED WITH UNIT FOR FULL INSTALLATION DETAILS).  
  
SUITABLE WIRE BENDING SPACE IS PROVIDED FOR UP TO EIGHT (8) 600 MCM CABLES PER TERMINAL PER NFPA 70.
3. GROUND LUGS ARE PROVIDED STANDARD AS FOLLOWS;  
(36) 1/0-750 MCM CU/AL CABLES.
4. CONSULT FACTORY FOR OTHER TERMINATION REQUIREMENTS.



G	233665	WK	BK	09/09/11
	SEE EGN			
F	223713	BWM	SDH	7/15/09
	UPDATE NOTES			
E	220448	TR	WK	10/24/08
	SEE EGN			
D	213365	TR	WK	5/11/07
	SEE EGN			
C	204234	AJM	WK	04/28/05
	SEE EGN			
B	201947	KH	WK	10/04/04
	SEE EGN			
A	201243	TR	WK	07/30/04
	SEE EGN			
-	150212	WK	WK	10/29/01
	ISSUE			

PROJECT NAME:				REV. TO SHEET	ECN NO.	BY	APP.	DATE
OUTLINE & MOUNTING						 THIRD ANGLE PROJECTION		
7000 SERIES TRANSFER SWITCH AND BYPASS/ISOLATION								
BY DATE		MANUFACTURING TOLERANCES TO BE IN ACCORDANCE WITH ASQC PROCEDURE MP-1-003. FOR PLASTIC PARTS SEE MP-1-005			COMPUTER GENERATED DRAWING			
DRAWN BY	DJB	10/29/01	ASSEM. REF. NO.			SCALE 1:1 SIZE DS		
CHECKED	MM	10/29/01	PROPERTY OF ASQC POWER TECHNOLOGIES. USE PERMITTED FOR OUR WORK ONLY. ALL RIGHTS OF DESIGN OR INVENTION ARE RESERVED.			727400		
PROJECT	WK	10/29/01				DRAWING G		
FINAL APPROVAL			 ASQC POWER TECHNOLOGIES, L.P. FLORHAM PARK, NEW JERSEY 07632 U.S.A.			ECN 233665 SHEET 1 OF 1		