

INSULATION SCHEDULE ( c )											
TYPE	EQUIPMENT OR SYSTEM SERVED	INSULATION CLASS (a)			JACKETING CLASS (b)			THICKNESS (IN)			
		INTERIOR CONCEALED	INTERIOR EXPOSED	EXTERIOR	INTERIOR GENERAL	EQUIPMENT ROOMS	EXTERIOR	NOMINAL PIPE SIZE (IN)			
								.5 - 1.5	2 - 4	5 - 6	8 & UP
A	CW	FG	--	--	1	--	--	0.5	0.5	0.5	0.5
		--	FG	--	--	1 & 4	--	0.5	0.5	0.5	0.5
B	HW	FG	--	--	1	--	--	1	1	1.5	1.5
		--	FG	--	--	1 & 4	--	1	1	1.5	1.5

(a) FG -- FIBROUS GLASS

FE -- FLEXIBLE ELASTOMERIC

UR - - URETHANE

CS - - CALCIUM SILICATE

CF - - CERAMIC FIBER

(c) INSULATION TYPE, JACKETING & THICKNESS FOR EQUIPMENT SHALL MATCH THE CORRESPONDING PIPING SYSTEM'S PARAMETERS LISTED FOR: EQUIPMENT ROOMS, NOMINAL PIPE SIZE 8" AND LARGER

(b) 0 - - NONE

1 - - ALL SERVICE

2 - - ALUMINUM FOIL

3 - - CANVAS

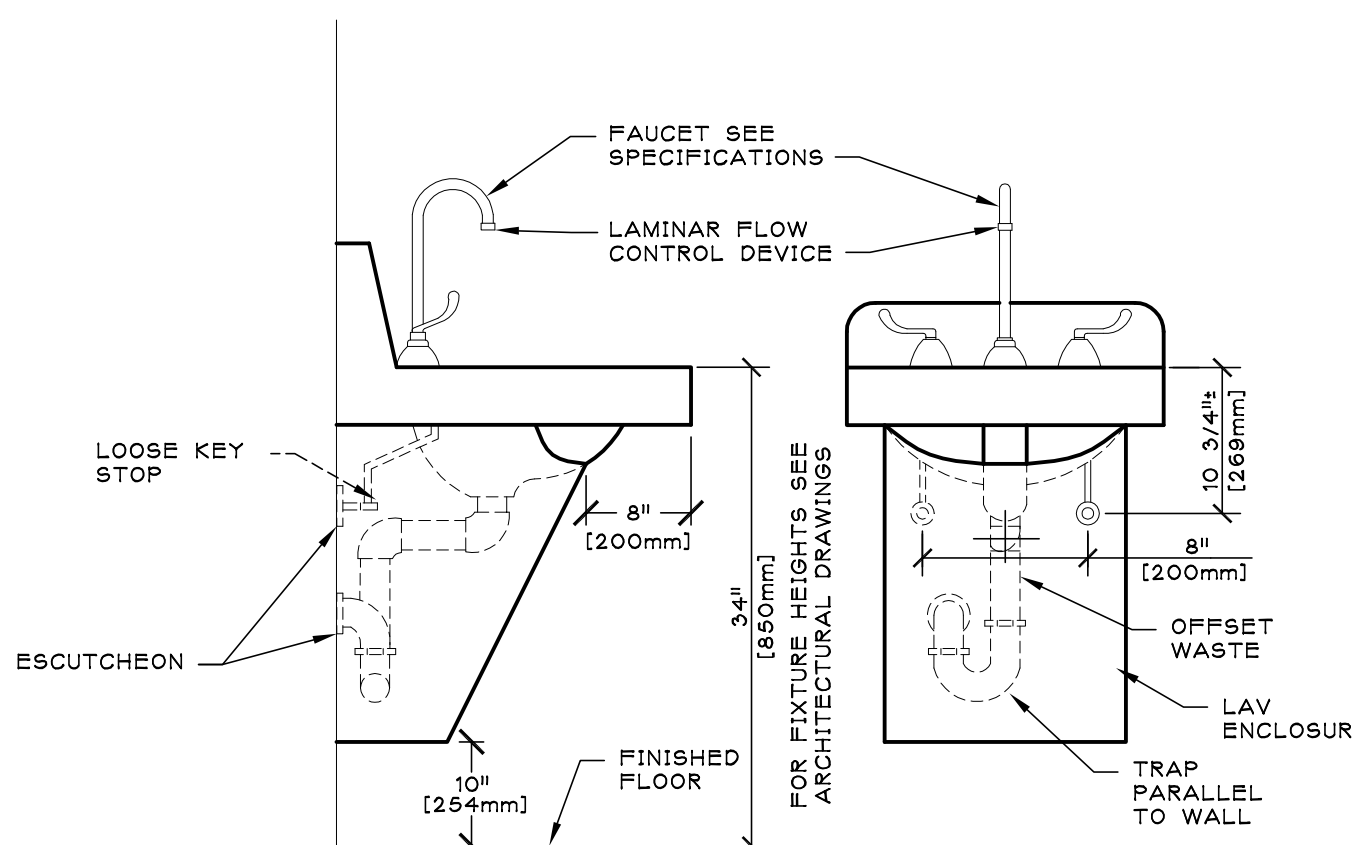
4 -- POLYVINYL CHLOIRDE (WHERE SUBJECT TO ABUSE OR SPECIFICALLY INDICATED)

5 - - STAINLESS STEEL

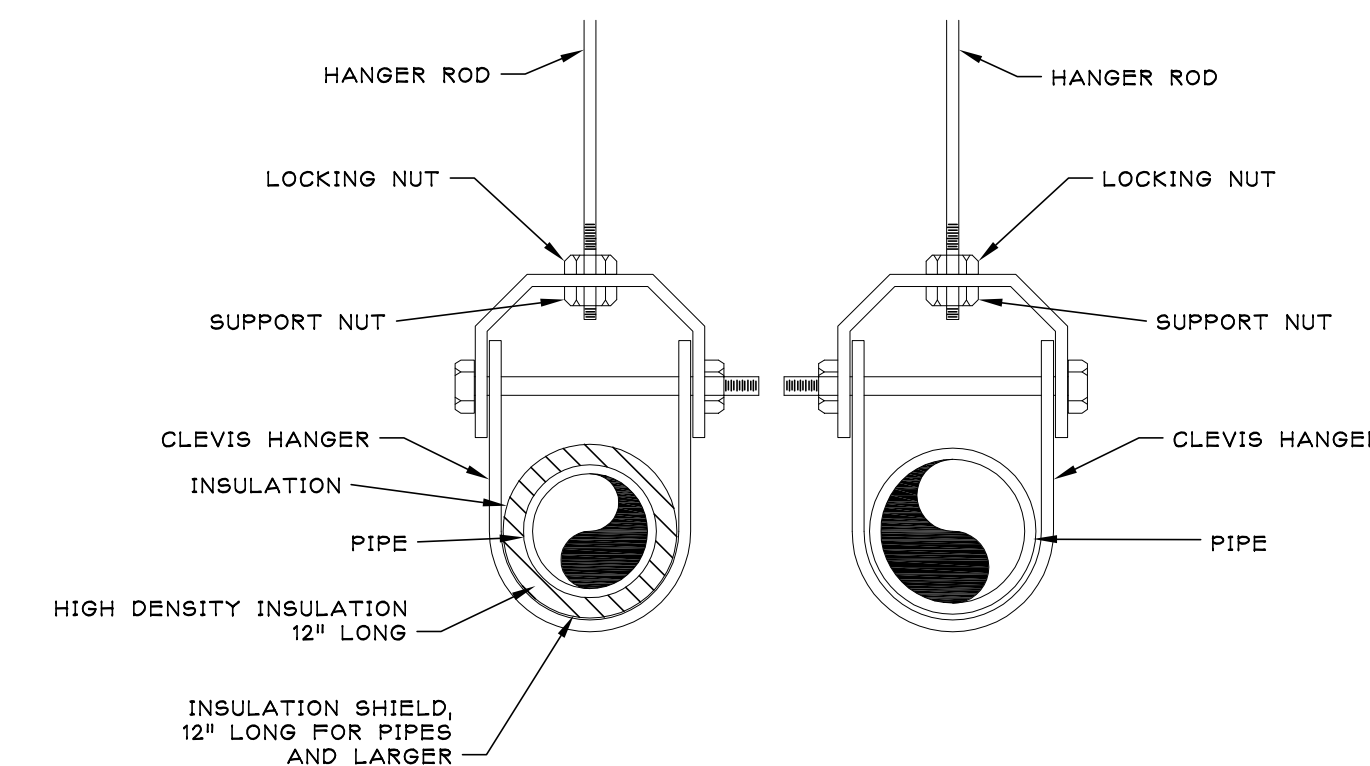
## 6 - - ALUMINUM

7 - - EPDM

FIXTURE #					SERVICE CONNECTION	MANUFACTURER AND EQUIPMENT	MODEL NO.	REMARKS
SINKS	S/W	V	CW	HW				
P-414	1½"	1½"	½"	¾"	AMERICAN STANDARD: LUCERENE TRIM: AMERICAN STANDARD HERITAGE DRAIN: AMERICAN STANDARD	SINK: Q355-012 TRIM: 7402.172H OR APPROVED EQUAL	PROVIDE FIXTURE CARRIER, GRID DRAIN 1.5 GPM LAMINAR FLOW CONTROL DEVICE OFFSET DRAIN AND SHROUD ENCLOSURE	
P-528	1½"	1½"	½"	¾"	TRIM: AMERICAN STANDARD HERITAGE DRAIN: AMERICAN STANDARD	TRIM: 7402.172H OR APPROVED EQUAL	INTEGRAL COUNTERTOP SINK PROVIDE 1.5 GPM LAMINAR FLOW CONTROL DEVICE	
NOTES:								
A. COORDINATE INSTALLATION OF PLUMBING FIXTURES WITH THE GENERAL CONSTRUCTION DIVISION.					D. ALL EXPOSED PIPING SHALL BE CHROME PLATED.			
B. THE EXACT LOCATION AND MOUNTING HEIGHTS OF ALL PLUMBING FIXTURES SHALL BE AS PER THE ARCHITECTURAL DRAWINGS.					E. ALL QUICK OPENING VALVES INCLUDING FLUSH VALVES SHALL HAVE SHOCK ARRESTERS PROVIDED WITH ACCESS PANEL WHERE INSTALLED IN CONCEALED SPACES.			
C. ALL SINKS AND LAVATORIES THAT ARE HANDICAPPED ACCESSIBLE SHALL BE PROVIDED WITH THERMAL AND IMPACT INSULATION/SHIELDING KITS ON SUPPLIES, TRAPS, TAILPIECES AND WASTE OUTLETS.								



# TYPICAL SINK DETAIL



# PLUMBING PIPE HANGER INSTALLATION DETAIL

HANGER ROD SCHEDULE		HANGER ROD SPACING	
PIPE SIZE	ROD SIZE	PIPE SIZE	MAX. ALLOWABLE SPACING
UP TO 2"	3/8" DIA.	1"	7'
2-1/2" THRU 3"	1/2" DIA.	1-1/4"	8'
4" AND 5"	5/8"	1-1/2"	9'
6" THRU 8"	3/4"	2"	10'
12"	7/8"	2-1/2"	11'
		3" THRU 8"	12'
		10" & 12"	15'

[illegible]