

three inches = one foot

one and one half inches = one foot

one inch = one foot

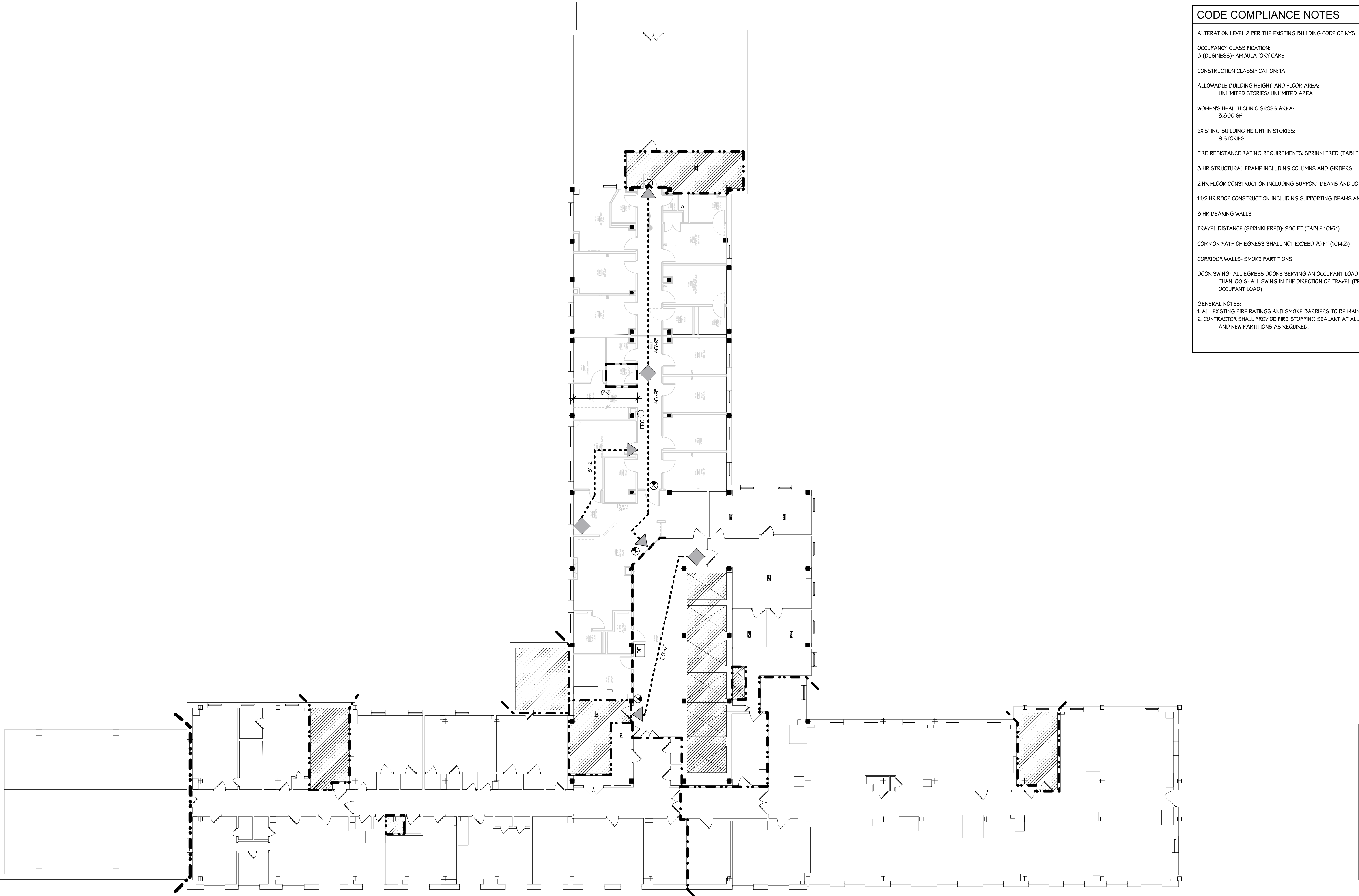
three quarters inch = one foot

one half inch = one foot

three eighths inch = one foot

one quarter inch = one foot

one eighth inch = one foot



CODE COMPLIANCE NOTES

ALTERATION LEVEL 2 PER THE EXISTING BUILDING CODE OF NY'S

OCCUPANCY CLASSIFICATION:
B (BUSINESS)- AMBULATORY CARE

CONSTRUCTION CLASSIFICATION: 1A

ALLOWABLE BUILDING HEIGHT AND FLOOR AREA:
UNLIMITED STORIES/ UNLIMITED AREA

WOMEN'S HEALTH CLINIC GROSS AREA:
3,800 SF

EXISTING BUILDING HEIGHT IN STORIES:
9 STORIES

FIRE RESISTANCE RATING REQUIREMENTS: SPRINKLERED (TABLE 601)

3 HR STRUCTURAL FRAME INCLUDING COLUMNS AND GIRDERS

2 HR FLOOR CONSTRUCTION INCLUDING SUPPORT BEAMS AND JOISTS

1 1/2 HR ROOF CONSTRUCTION INCLUDING SUPPORTING BEAMS AND JOISTS

3 HR BEARING WALLS

TRAVEL DISTANCE (SPRINKLERED): 200 FT (TABLE 1016.1)

COMMON PATH OF EGRESS SHALL NOT EXCEED 75 FT (1014.3)

CORRIDOR WALLS- SMOKE PARTITIONS

DOOR SWING- ALL EGRESS DOORS SERVING AN OCCUPANT LOAD GREATER THAN 50 SHALL SWING IN THE DIRECTION OF TRAVEL (PROJECT OCCUPANT LOAD)

GENERAL NOTES:
1. ALL EXISTING FIRE RATINGS AND SMOKE BARRIERS TO BE MAINTAINED.
2. CONTRACTOR SHALL PROVIDE FIRE STOPPING SEALANT AT ALL EXISTING AND NEW PARTITIONS AS REQUIRED.

FIRE RATING LEGEND

1 HR FIRE RATED PARTITION

2 HR FIRE RATED PARTITION

1 HR SMOKE PARTITION

SMOKE BARRIER

EXISTING STAIR/ SHAFT

SYMBOLS

FE

FIRE EXTINGUISHER AND CABINET

EFE

EXISTING FIRE EXTINGUISHER

EXIT SIGN

DIRECTIONAL EXIT SIGN

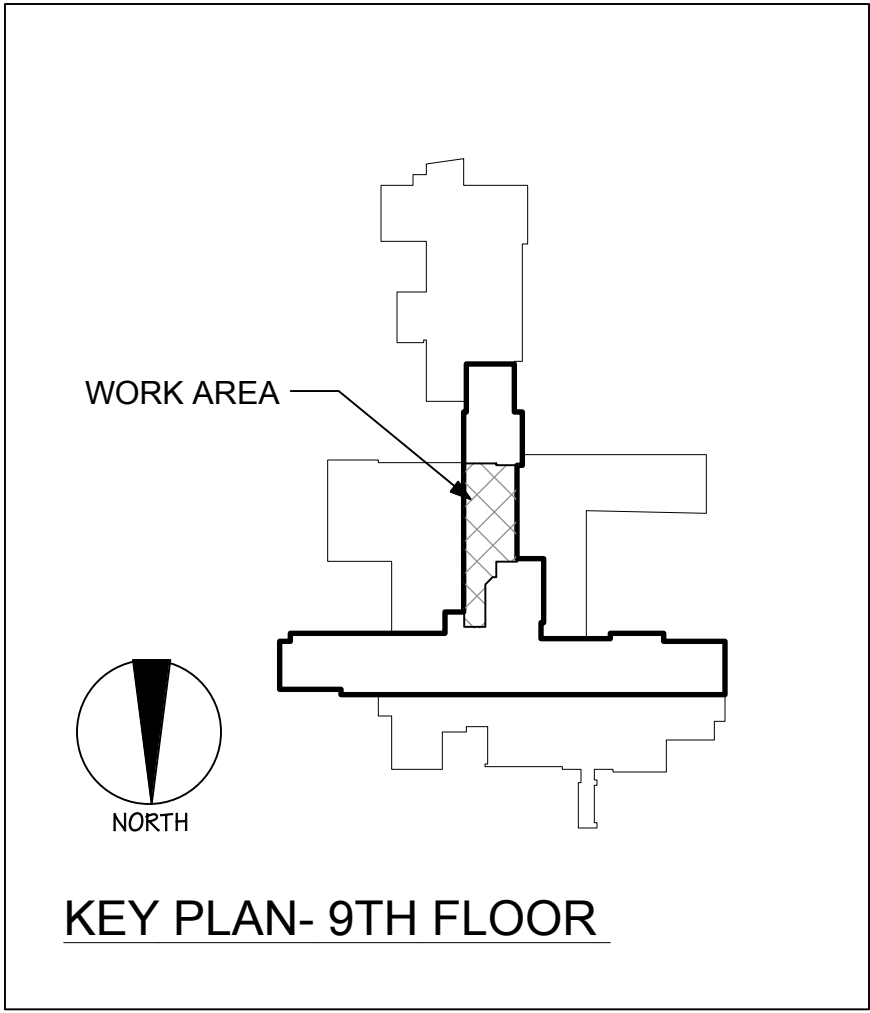
DRINKING FOUNTAIN

EXIT ACCESS TRAVEL DISTANCE

1

CODE COMPLIANCE PLAN

Scale: 3/32" = 1'-0"



Revisions:

Date

CONSULTANTS:

ARCHITECT/ENGINEERS:

dwor

ARCHITECTURAL

SYRACUSE
313 East Willow Street
Suite 107
Syracuse, NY 13203
ph: 315.473.1800

ROCHESTER
1344 University Avenue
Suite 140
Rochester, NY 14607
ph: 585.461.4771

IPD: Engineering

INTEGRATED PROJECT DELIVERY
ONE WEBSTER'S LANDING
SYRACUSE, NEW YORK 13202
315.423.0185

Drawing Title
CODE COMPLIANCE PLAN

Approved: Project Director

Project Title
RENOVATE FOR WOMEN'S CLINIC

Location
800 IRVING AVENUE, SYRACUSE NY 13210

Date
12.18.2012

Checked
KAD

Drawn
LMB

Project Number
VA# 528A7-13-701
DA# 12-001
Building Number
1

Drawing Number
GI-101

Dwg. 2 of 41

VA HEALTHCARE NETWORK

UPSTATE NEW YORK