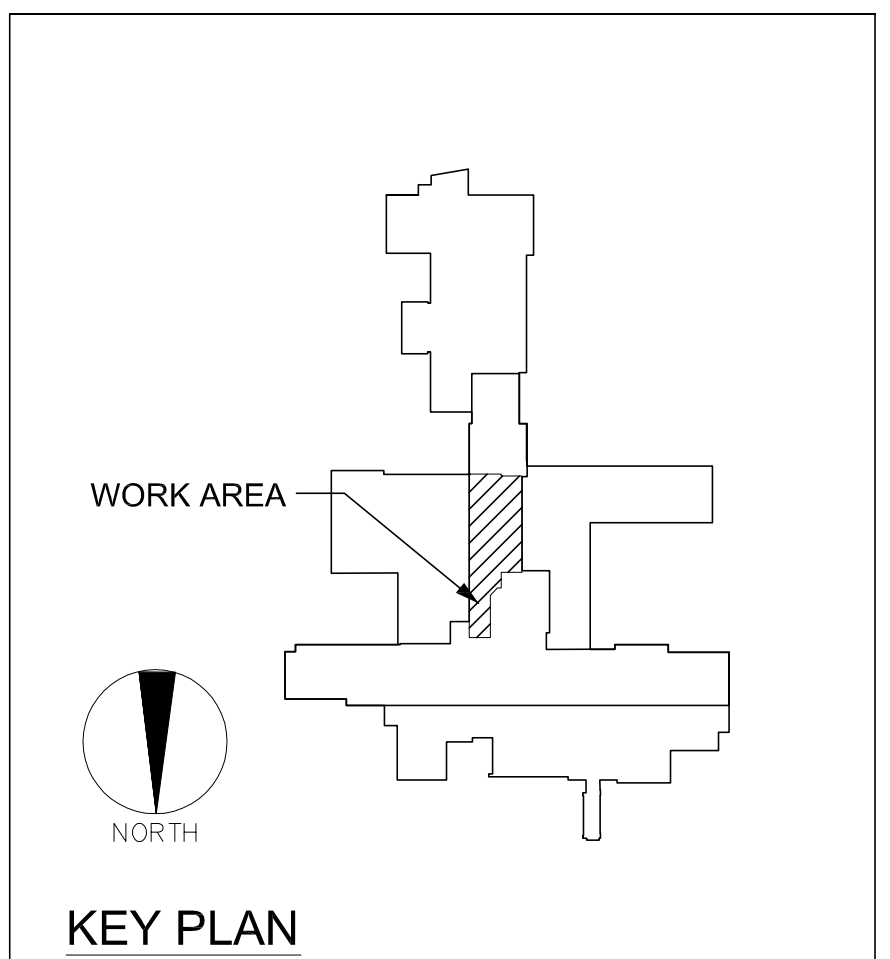
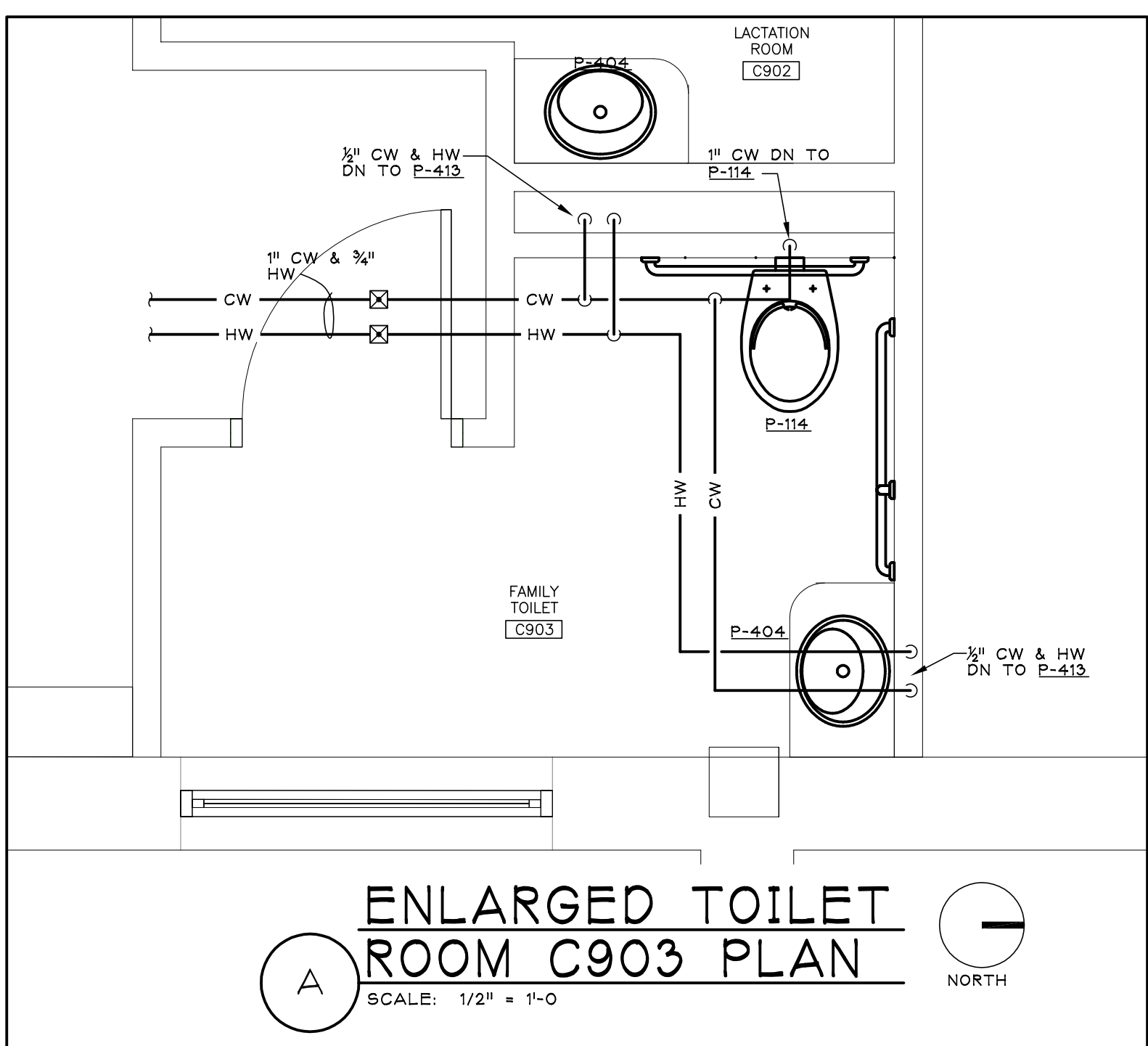
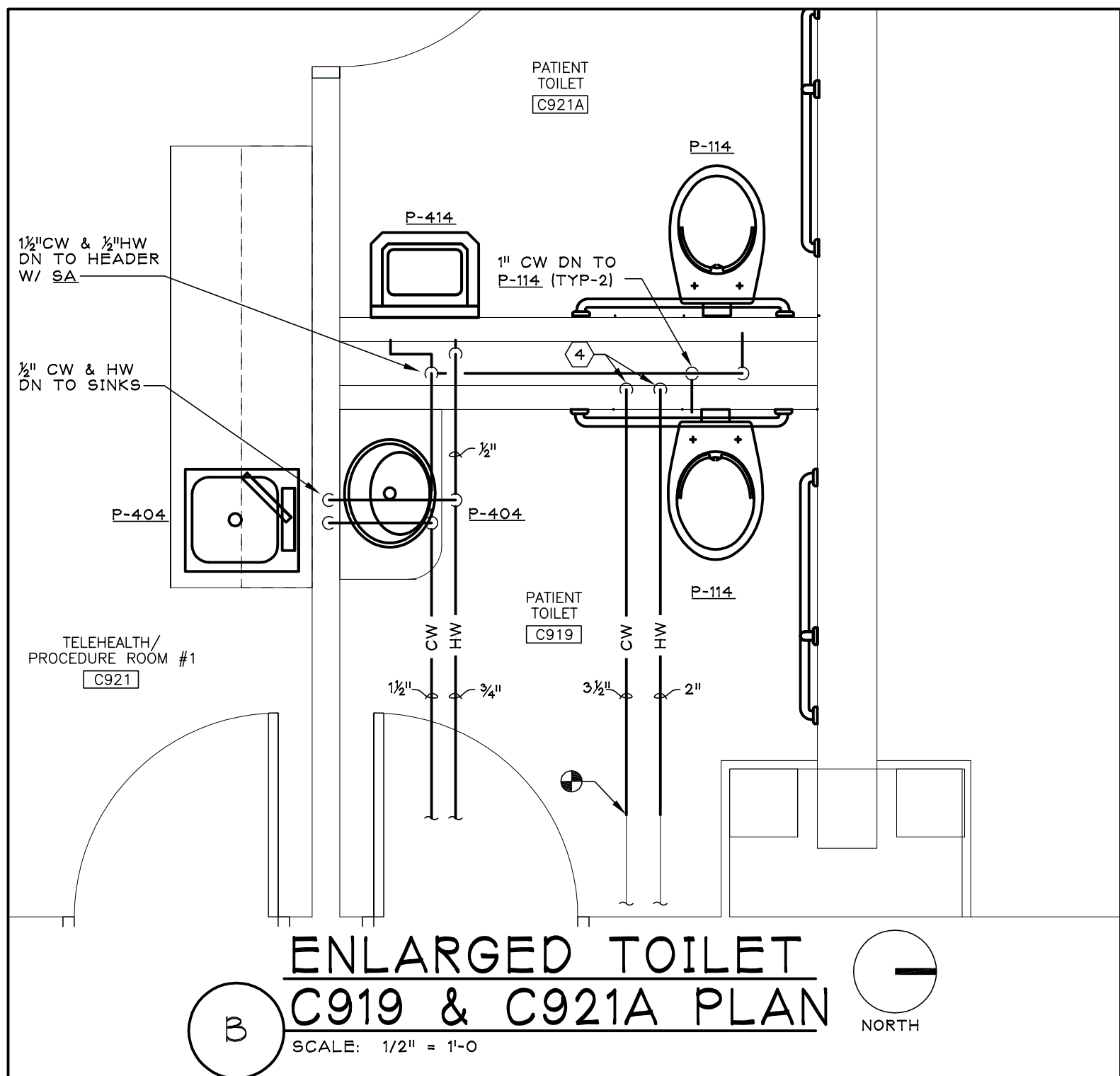
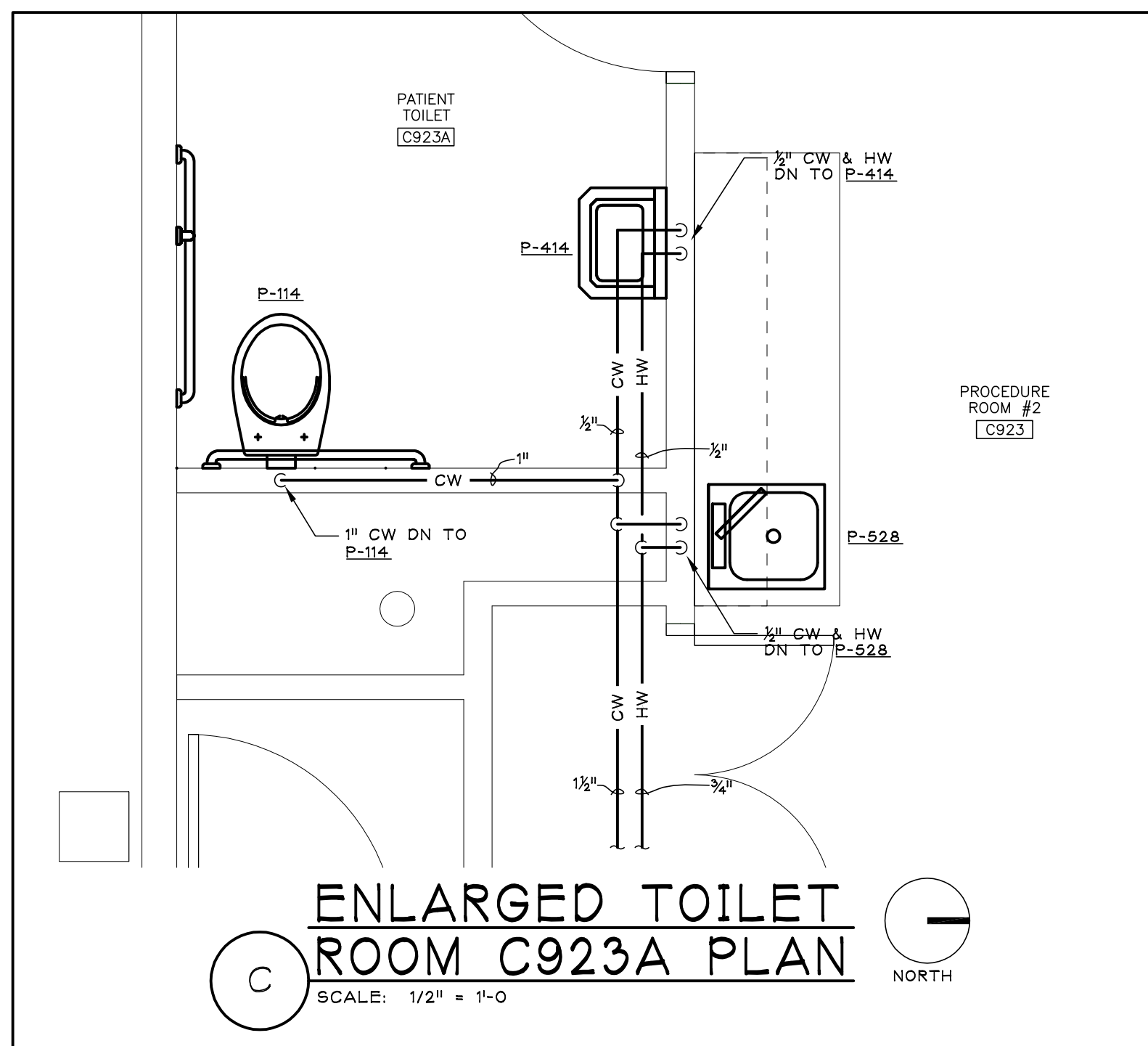


9TH FLOOR PARTIAL PLAN - PLUMBING FLOOR PLAN

[illegible]

## CONSULTANTS:



ARCHITECT/ENGINEERS:

**dwyer**  
ARCHITECTURAL

<b>SYRACUSE</b>	<b>ROCHESTER</b>
313 East Willow Street	1344 University Avenue
Suite 107	Suite 140
Syracuse, NY 13203	Rochester, NY 14607
ph: 315.299.7188	ph: 585.461.4771

**IPD: Engineering**  
INTEGRATED PROJECT DELIVERY

ONE WEBSTER'S LANDING  
SYRACUSE, NEW YORK 13202  
315.423.0185

Drawing Title

## 9th FLOOR PLUMBING FLOOR PLAN

Approved: Project Director

Project Title
---------------

RENOVATE FOR WOMEN'S CLINIC

Location	800 IRVING AVENUE, SYRACUSE NY 13210
----------	--------------------------------------

Date

Checked

As Noted

Project Number

VA# 528A7-13-701  
IDD# 14 7020

IPD# 11-7230

Drawing Number

P-101

Dwg. 24 of 41

