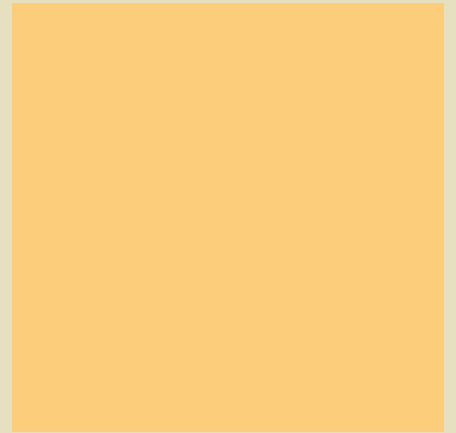
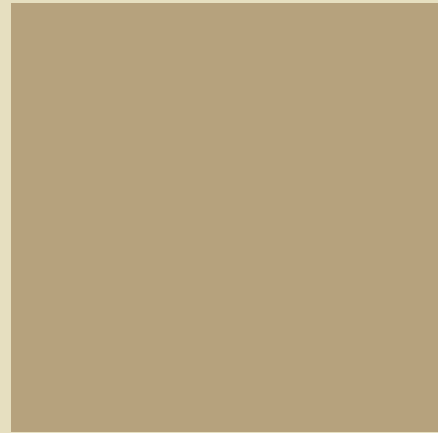
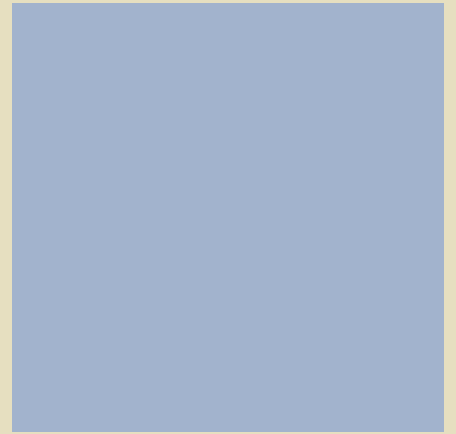
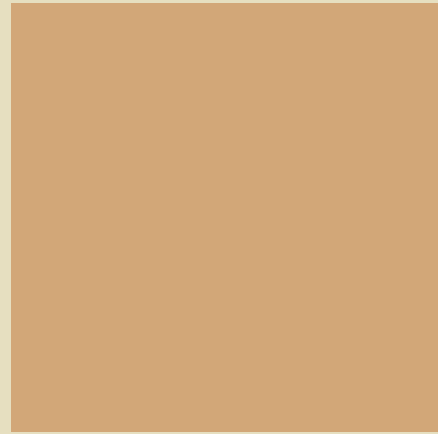


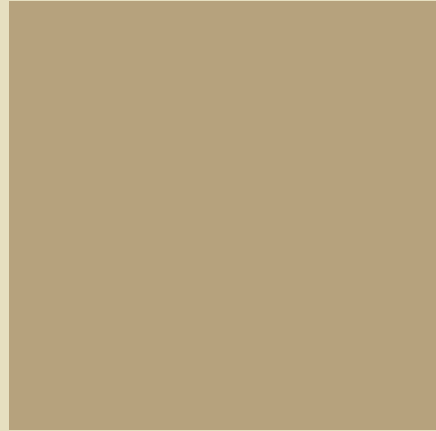
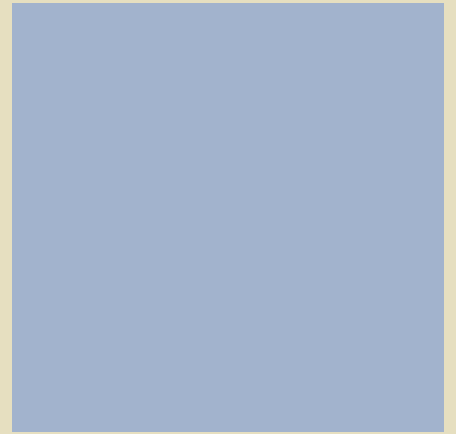


# VISN I INTERIOR DESIGN PROGRAM



COLOR for the Healing Environment

+ Healing design  
incorporates nature  
and the five senses:  
  
Smell, Taste, Touch,  
Hearing, and  
of course,  
Sight.

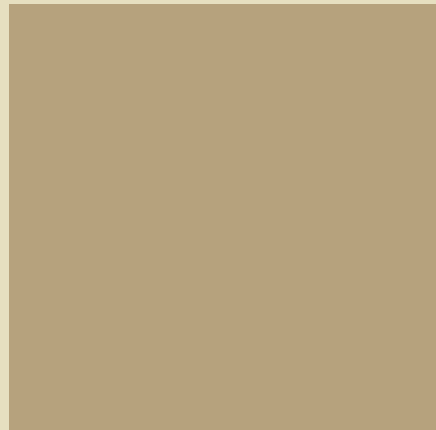
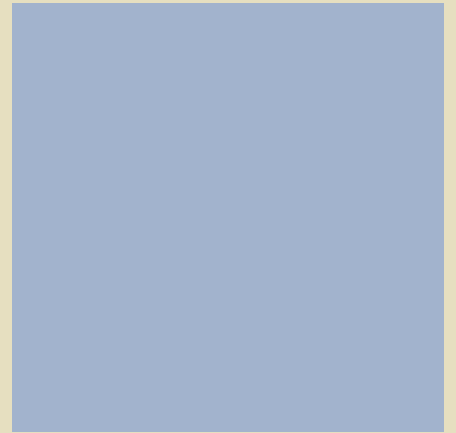


Healing Design and  
the Five Senses



# The VISN 1 COLOR PALETTE

Green Mountain  
Honey Bee  
Boston Blue  
Nutmeg  
Costal Path

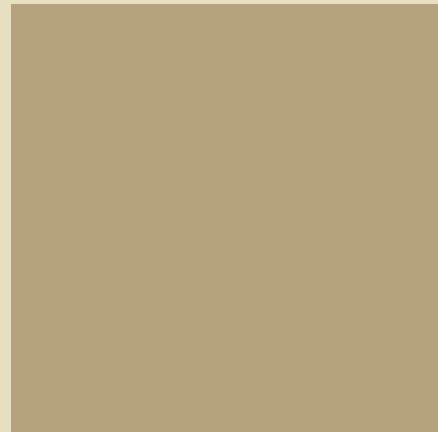
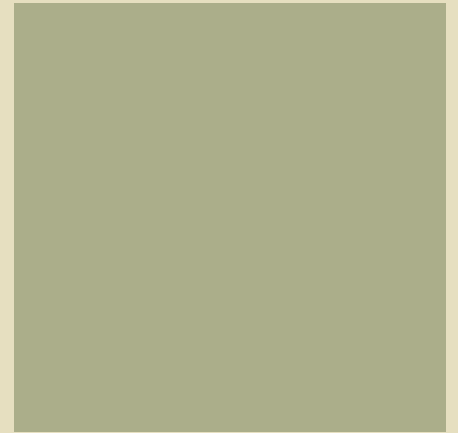




## PSYCHOLOGY OF COLOR

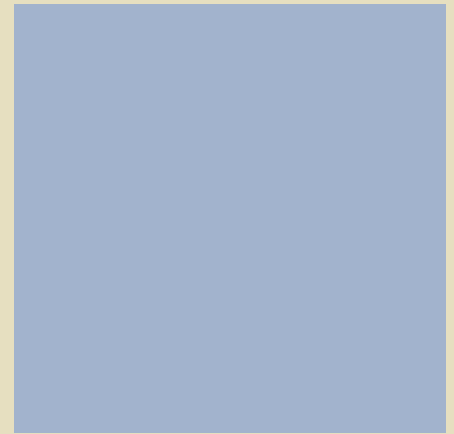
Color has a psychological impact on people.

- In healthcare, colors are selected to:
  - Create healing environments using calming colors from nature.
  - Create familiarity and comfort by using a regional palette.
- The VISN 1 Palette was created to simulate nature with soothing and timeless colors.



VISN I COLOR PALETTE

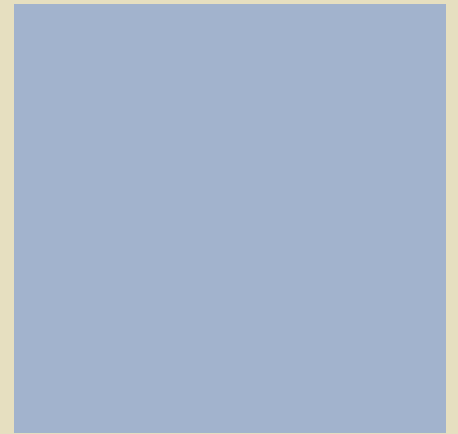
GREEN MOUNTAIN



VISN | Color Palette

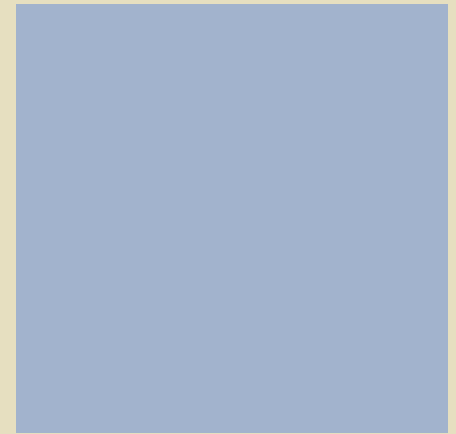
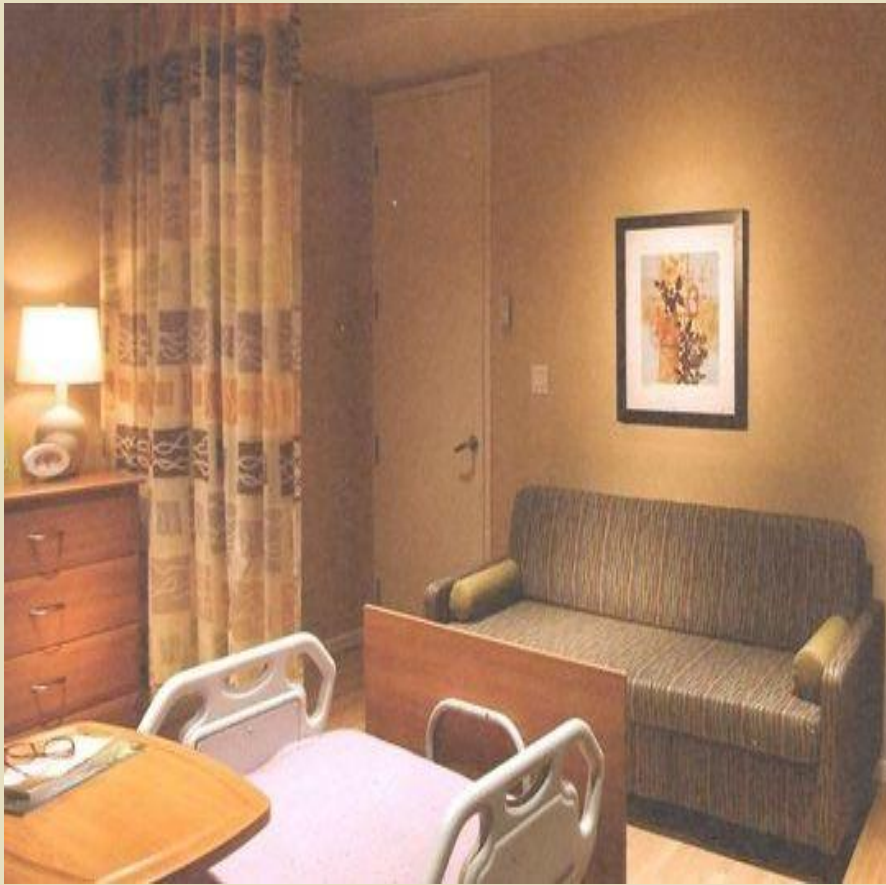
BOSTON BLUE





VISN I COLOR PALETTE

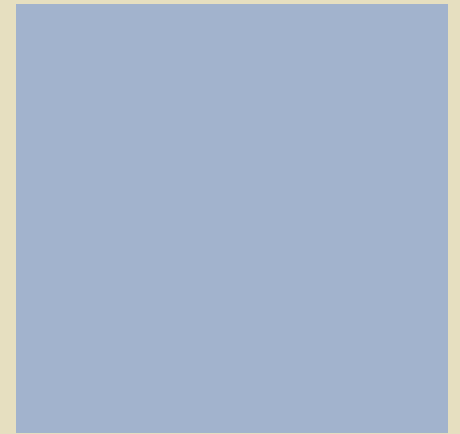
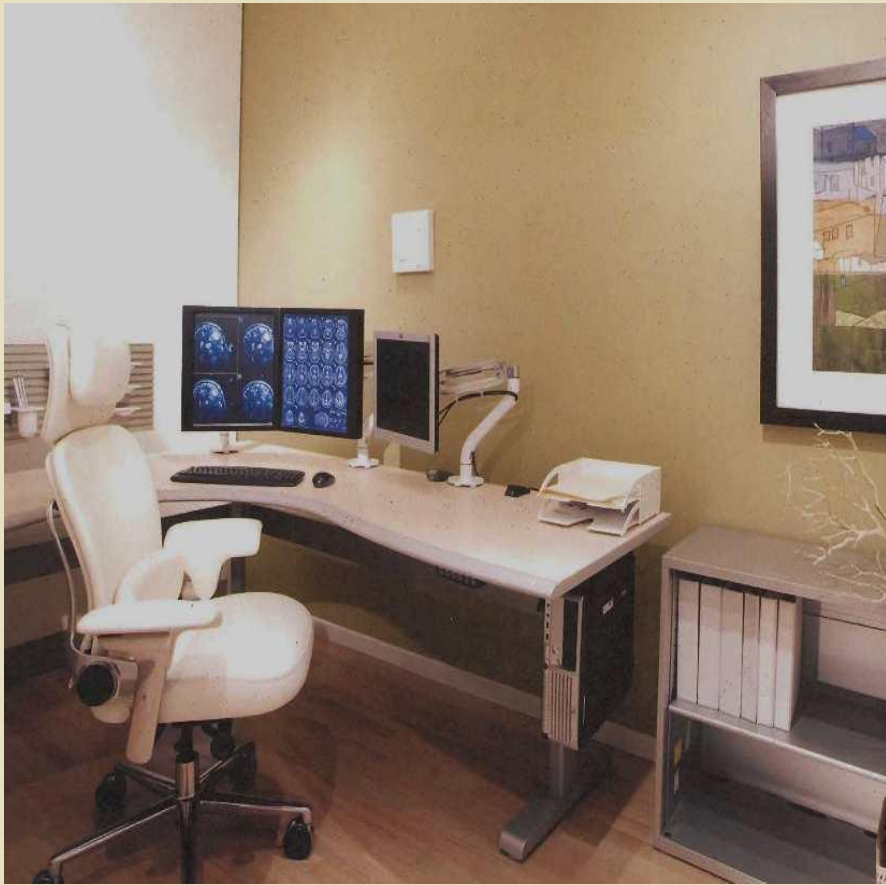
HONEYBEE



VISN | COLOR PALETTE

NUTMEG





VISN | COLOR PALETTE

COASTAL PATH



VISN I  
COLOR  
PALETTE



NEUTRALS  
+  
SANDSTONE  
COASTAL PATH  
WHITE BIRCH



## PAINT SPECIFICATIONS

In the healing  
environment

- PURCHASING POWER  
AND COST SAVINGS
  - Utilize basic not custom colors – less expensive
  - Eliminates large paint inventory of multiple colors
  - Eliminates need of disposal of many left over paints



# PAINT SPECIFICATIONS

Specifically for  
Healthcare

## ■ Benjamin Moore:

- Ultra Spec 500 - zero VOC qualifies as LEED paint, low odor
- Eco Spec Silver – low odor zero VOC contains pure silver as antimicrobial
- Super Spec Green – low VOC, minimal odor, highly durable low sheen finish

## ■ Sherwin Williams:

- Promar 200 Zero VOC Latex - (Patient and Common Rooms)
- Harmony- odor eliminating with antimicrobial properties
- Pro Industrial Water based Epoxy – low VOC, water based, stain resistant, durable
- Pro Industrial Zero VOC Waterborne Epoxy – resistant to corrosion, chemical, abrasion, moisture

“Variety of form  
and the brilliancy of  
**COLOR**  
in the objects  
presented to patients  
are an actual means of recovery.”

Florence Nightingale 1860





# PAINT SPECIFICATIONS

## ■ Benjamin Moore:

- Ultra Spec 500 - zero VOC qualifies as LEED paint, low odor
- Eco Spec Silver – low odor zero VOC contains pure silver as antimicrobial
- Super Spec Green – low VOC, minimal odor, highly durable low sheen finish

## ■ Sherwin Williams:

- Promar 200 Zero VOC Latex - (Patient and Common Rooms)
- Harmony- odor eliminating with antimicrobial properties
- Pro Industrial Water based Epoxy – low VOC, water based, stain resistant, durable
- Pro Industrial Zero VOC Waterborne Epoxy – resistant to corrosion, chemical, abrasion, moisture





# Specific Paint Color Information:

Green Mountain: Sherwin Williams 7727 'Koi Pond'

Boston Blue: Sherwin Williams 7616 'Breezy'

Honey Bee: Sherwin Williams 7682 'Bee's Wax'

Nutmeg: Benjamin Moore AF-360 'Farm Fresh'

Sandstone: Benjamin Moore HC-81 'Manchester Tan'

White Birch: Benjamin Moore OC-131 'White Down'

Coastal Path: Benjamin Moore AF-380 'Coastal Path'