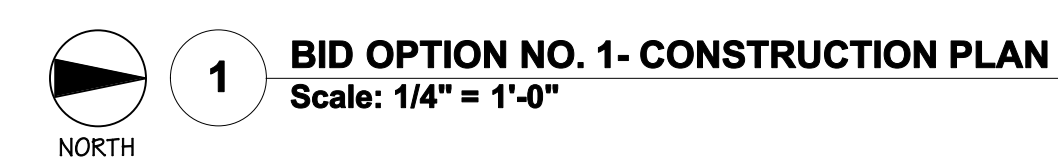


1. INDICATES AREA OF ASBESTOS TILE REMOVAL. COORDINATE WITH HA-100 FOR MORE INFORMATION.

2. REFER TO AD-101 FOR BASE BID DEMOLITION PLAN AND NOTES.

F - FLOOR DEMOLITION

F.1	REMOVE TERRAZZO WALL. BASE COMPLETE. FLASH PATCH AND PREPARE SLAB FOR NEW FINISH IN MANNER REQUIRED BY NEW FINISH MANUFACTURER.
F.2	REMOVE ASBESTOS TILE AND COORD. W/ DRAWING HA-100 FOR ASBESTOS MATERIAL REMOVAL DRAWINGS AND NOTES. PROVIDE FLOWABLE FLOOR FILL (GYPCRETE OR EQUAL) AT ABATED FLOOR AREAS.



Scale: As Noted

[illegible]