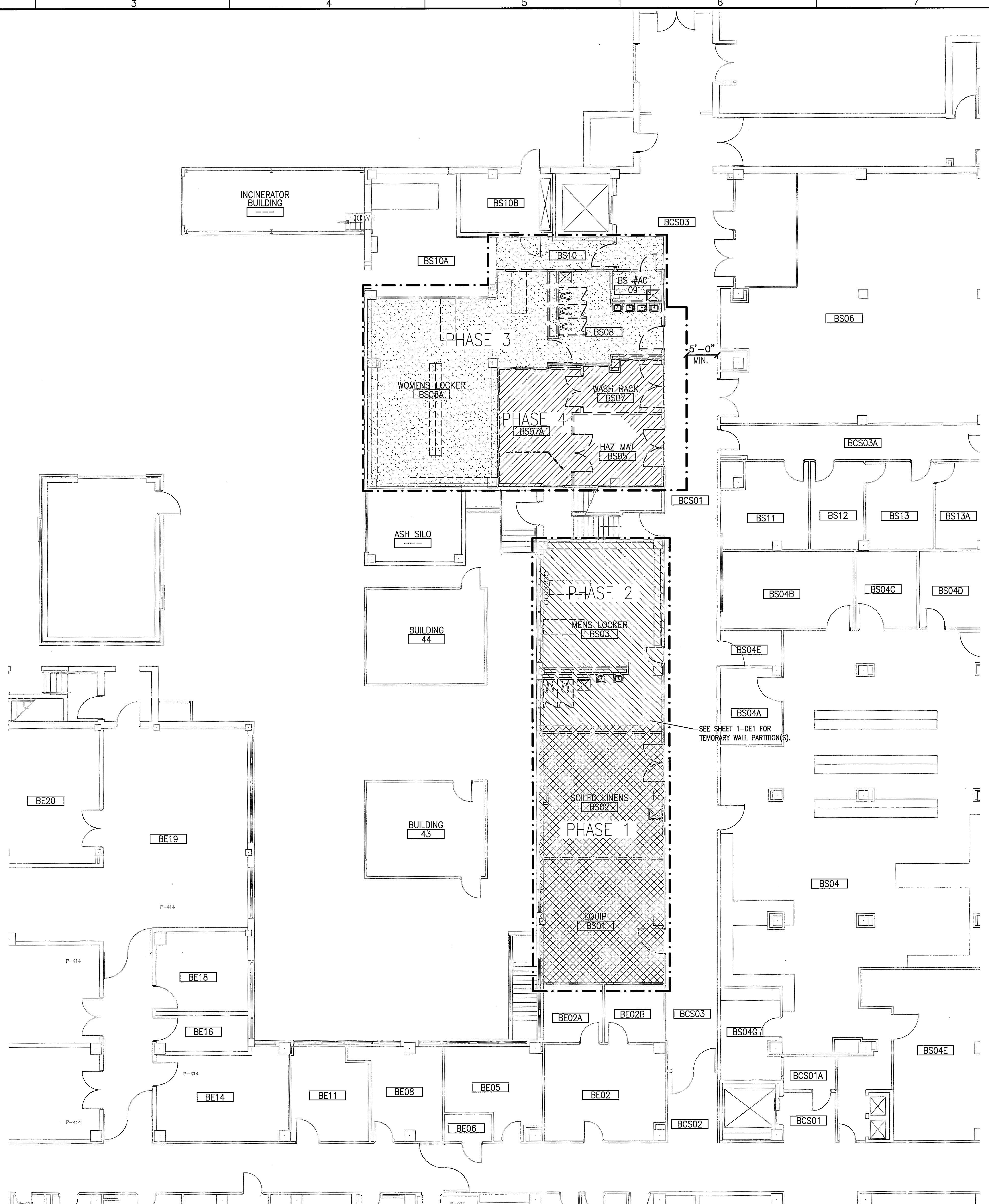


three inches = one foot
one and one half inches = one foot
one inch = one foot
three quarters inch = one foot
one half inch = one foot
three eighths inch = one foot
one quarter inch = one foot
one eighth inch = one foot

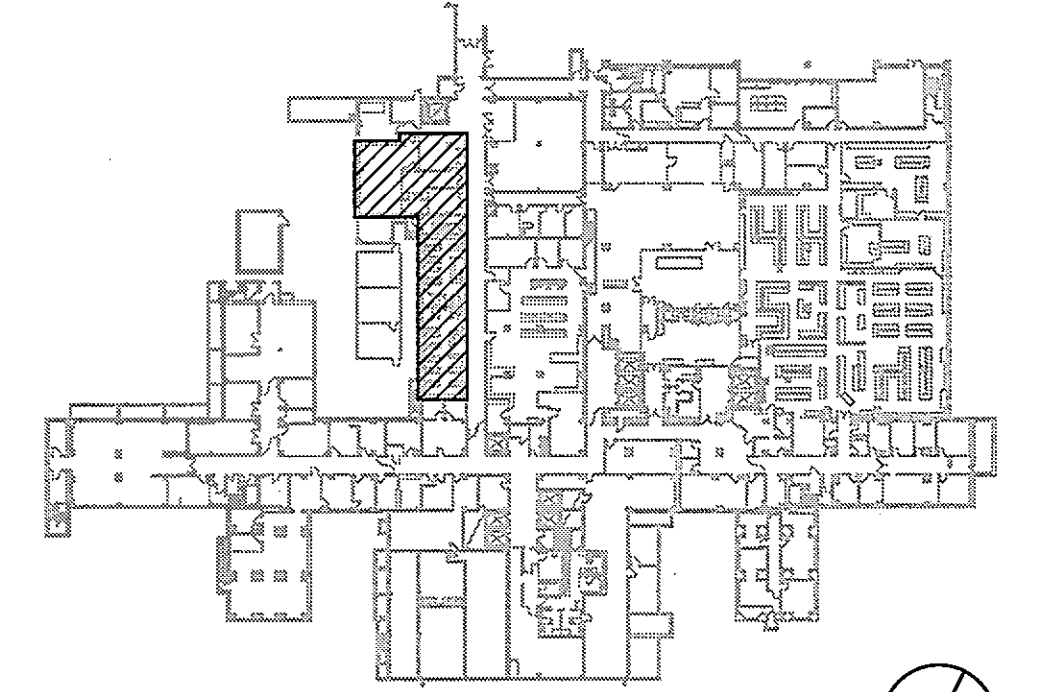


- PHASING LEGEND**
- PHASE 1**
- RELOCATE SOILED LINEN BS02 AND EQUIPMENT STORAGE BS01 TO TEMPORARY LOCATION DETERMINED BY VA AND LOCATE NEW MEN'S LOCKER ROOMS TO FORMER LOCATION OF SOILED LINEN AND EQUIPMENT.
- PHASE 2**
- RENOVATE FORMER MEN'S LOCKER SPACE BS03 INTO NEW WOMEN'S LOCKER ROOM.
- PHASE 3**
- RENOVATE FORMER WOMEN'S LOCKER ROOMS BS08 INTO EQUIPMENT AND SOILED LINEN ROOMS.
- PHASE 4**
- RENOVATE PUMP ROOM BS07A, WASH RACK BS07 AND HAZARDOUS MATERIALS STORAGE BS05 ROOMS.
 - SEE 1-A25 FOR FINISH INFO

- GENERAL NOTES**
- A. KEEP EGRESS TO EXITS CLEAR AT ALL TIMES DURING CONSTRUCTION
 - B. CONTRACTOR TO MAINTAIN INTERIM LIFE SAFETY CODE STANDARDS DURING CONSTRUCTION PER TJC (ILSM) PROGRAM
 - C. CONTRACTOR TO MAINTAIN HOSPITAL VA INFECTION CONTROL STANDARDS AT ALL TIMES DURING CONSTRUCTION
 - D. VA TO PROVIDE TEMPORARY RELOCATION OF STAFF LOCKERS FOR MEN AND WOMEN AS REQUIRED
 - E. COORDINATE DEMO AND TEMPORARY PARTITIONS WITH 1-DE1 DUST CONTROL PLAN

LEGEND

--- CONTRACT LINE



KEY PLAN
NOT TO SCALE
FULLY SPRINKLERED BUILDING
BID DOCUMENTS

Revisions	Date	CONSULTANTS: KZFD:SIGN 700 BROADWAY STREET CINCINNATI, OH 45202-6010 PHONE: 513.621.6211 FAX: 513.621.6530		ARCHITECT/ENGINEERS: PARADIGM ENGINEERS AND CONSTRUCTORS PO BOX 436223 Louisville, Kentucky 40253 - PH: 502.339.8511 - www.paradigmusa.com	Drawing Title: BASEMENT PHASING PLAN	Project Title: SURGICAL SUPPORT AND LOCKERS	Project Number: 636A8-11-011	Building Number: 1	Drawing Number: 1-A2	Office of Construction and Facilities Management Department of Veterans Affairs