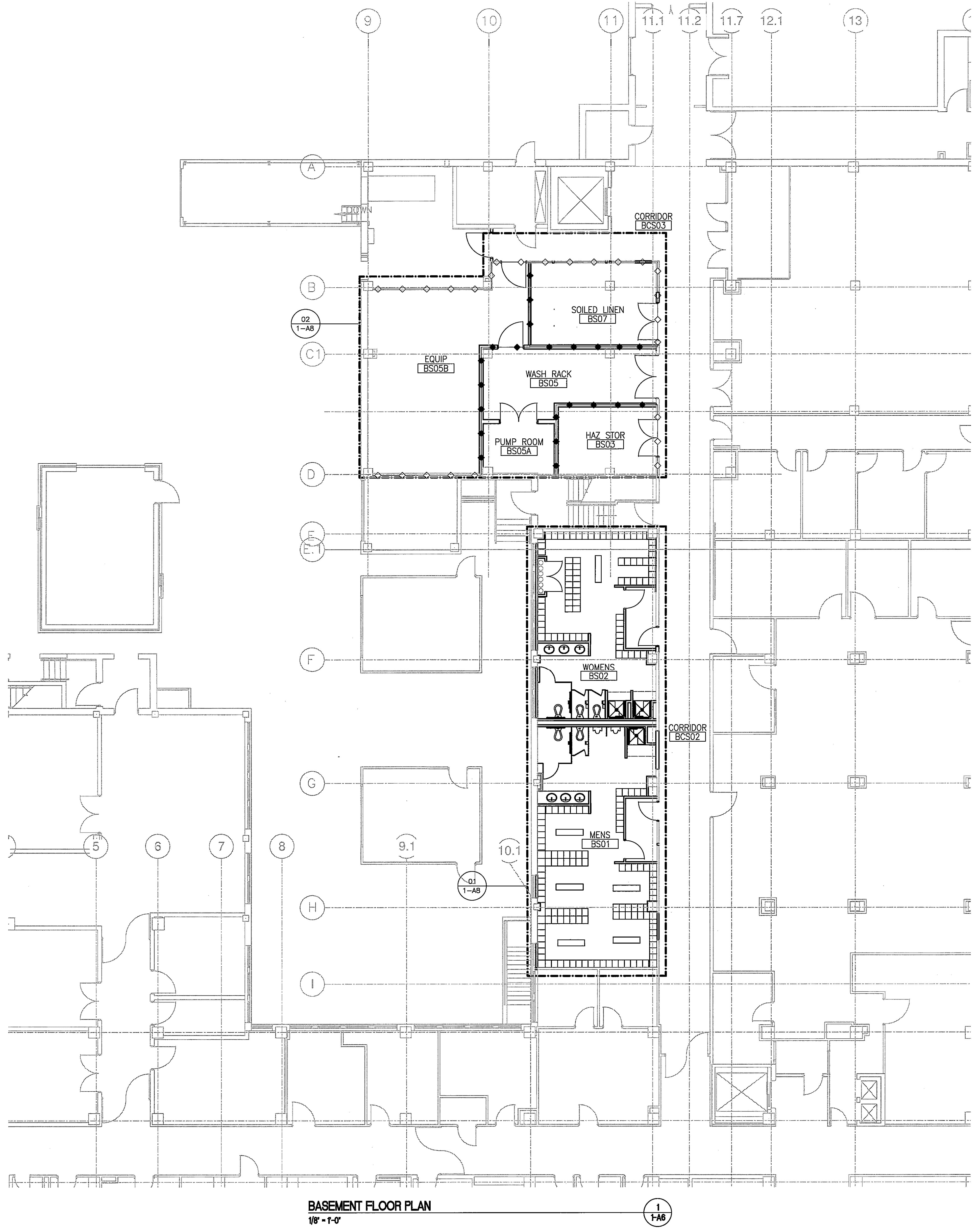


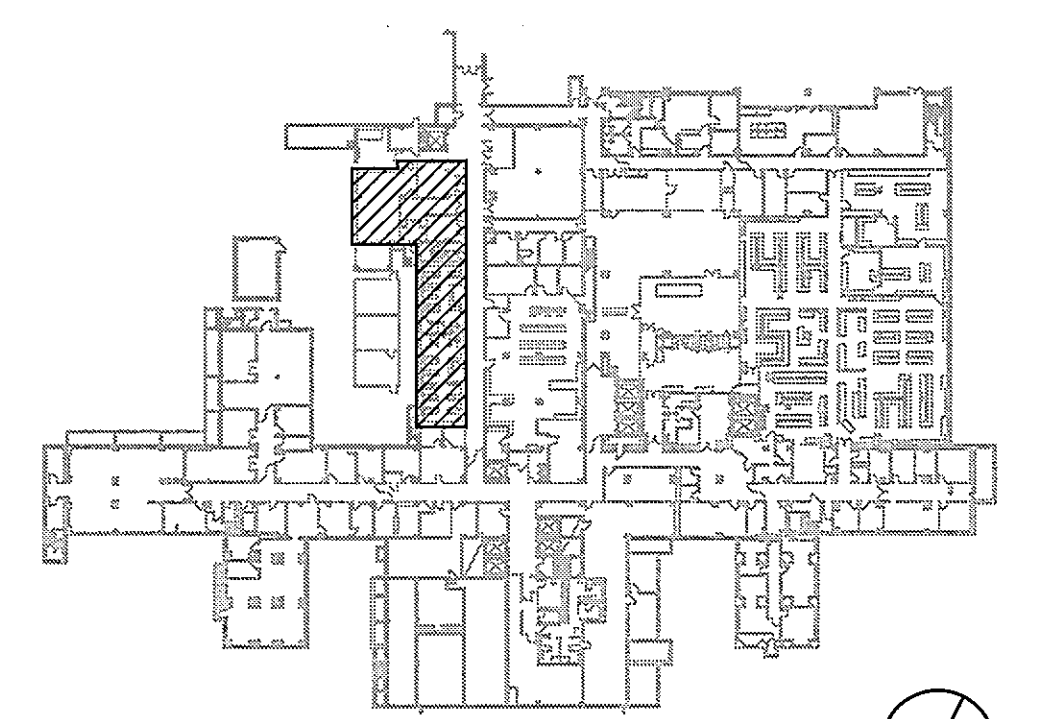
three inches = one foot  
one and one half inches = one foot  
one inch = one foot  
three quarters inch = one foot  
one half inch = one foot  
one eighth inch = one foot  
one quarter inch = one foot  
one eighth inch = one foot



BASEMENT FLOOR PLAN  
1/8" = 1'-0"

- GENERAL NOTES**
- A. CONTRACTOR TO MAINTAIN INTERIM LIFE SAFETY CODE STANDARDS DURING CONSTRUCTION PER TJC (ILSM) PROGRAM
  - B. MAINTAIN INTEGRITY OF EXISTING SMOKE BARRIERS AS REQUIRED TO MEET RATING
  - C. EXISTING STAIR CONSTRUCTION TO BE MAINTAINED AS EXISTING 2 HOUR CONSTRUCTION

- LEGEND**
- CONTRACT LINE
  - FIRE RESISTIVE RATED LINE, 1 HOUR
  - FIRE RESISTIVE RATED LINE, 1 HOUR (EXISTING WALL)



KEY PLAN  
NOT TO SCALE  
FULLY SPRINKLERED BUILDING  
BID DOCUMENTS

Revisions	Date	CONSULTANTS:  <b>KZF DESIGN</b> 700 BROADWAY STREET CINCINNATI, OH 45202-6010 PHONE: 513.621.6211 FAX: 513.621.6530		ARCHITECT/ENGINEERS:  <b>PARADIGM</b> ENGINEERS AND CONSTRUCTORS PO BOX 436223 Louisville, Kentucky 40253 - PH: 502.339.8511 - www.paradigmusa.com	Drawing Title: <b>BASEMENT FLOOR PLAN</b>	Approved Project Director	Project Title: <b>SURGICAL SUPPORT AND LOCKERS</b>	Location: <b>IOWA CITY VAMC</b> 601 HIGHWAY 6 WEST, IOWA CITY, IOWA 52246-2208	Date: 07-13-12	Checked: SULLIVAN	Drawn: SAID/BRUNNER	Project Number: 636A8-11-011	Office of Construction and Facilities Management  Department of Veterans Affairs
												Building Number: 1	